

Stream Deck RossTalk Plugin

The RossTalk plugin for the Corsair Stream Deck allows you to assign RossTalk commands to buttons on the Stream Deck using the Stream Deck software.

Note: The RossTalk plugin is only supported on Windows® 10 at this time.

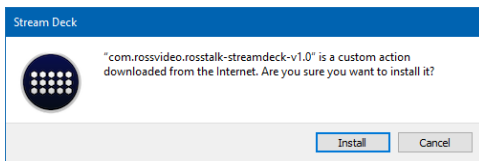
Refer to the documentation that came with your Stream Deck for information on setting up your Stream Deck.

To Install the Plugin

The RossTalk plugin is installed into Stream Deck on the same PC that is connected to the Stream Deck hardware.

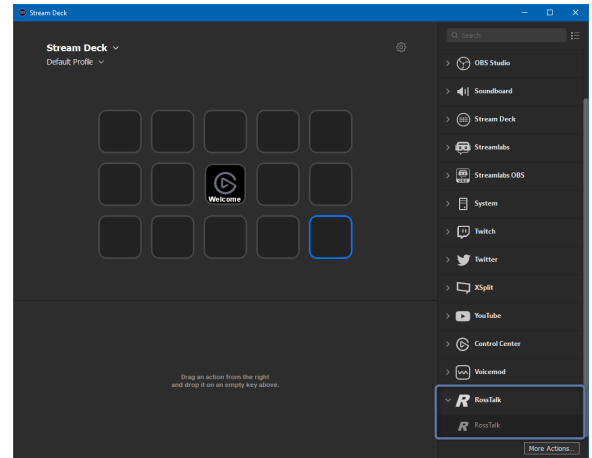
Note: Ensure that you have the latest Stream Deck software installed on your PC.

1. Locate the RossTalk plugin (com.rossvideo.rosstalk-streamdeck-v1.0.streamDeckPlugin) on your Ross® Video Product Resources USB or download it from the website.
2. Create a folder on your PC for the plugin. For example, C:\Ross\StreamDeck\. The Stream Deck software leaves the 3rd party plugins where they are and does not copy them to the Plugins folder of the application.
3. Double-click on the com.rossvideo.rosstalk-streamdeck-v1.0.streamDeckPlugin file. You are prompted to install the plugin, click **Install**.



4. On the Stream Deck application, the RossTalk plugin has been added to the plugin list at the bottom.

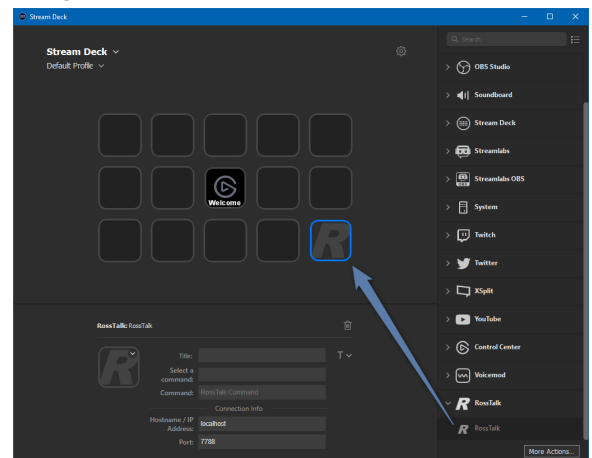
Tip: To uninstall the RossTalk plugin, click **More Actions**, scroll down to the RossTalk plugin and click **Uninstall**.



To Program a Button

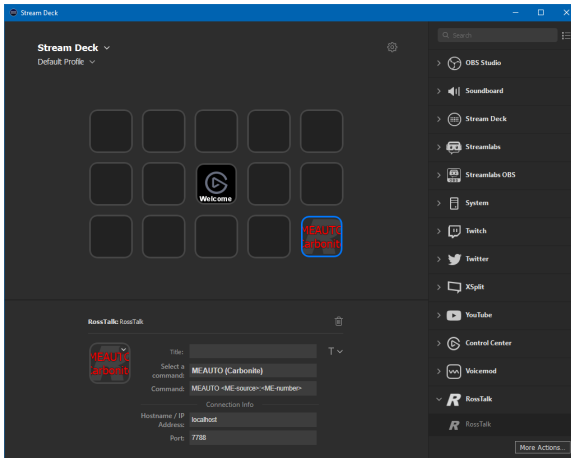
Add a RossTalk command to each button on the Stream Deck.

1. Drag RossTalk to the button you want to assign a RossTalk command to.



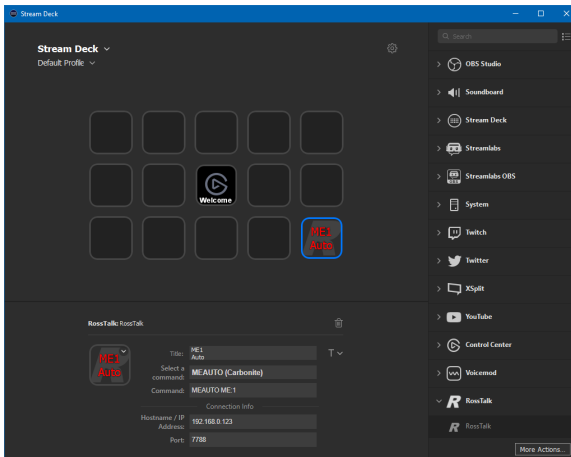
2. Click the **Select a command** list and select the RossTalk command you want to send to a device. The commands are organized by product. The **Command** field is filled with the default syntax of the command.

6. Leave the **Port** field as 7788.



3. In the **Command** field, replace the <_> with the specific parameter values for the command you want to send.

In the example shown we are adding the MEAUTO command for Carbonite. We replace the <ME-source> with ME and <ME-number> with 1 to have the switcher perform an auto transition on ME 1.



4. In the **Title** field, enter the text that you want to appear on the button. Click the **T** next to the field to customize the font, color, and placement of the text.

5. In the **Hostname/IP Address** field, enter the IP address of the device you want to send the RossTalk command to. With a switcher this is the IP address of the frame.

