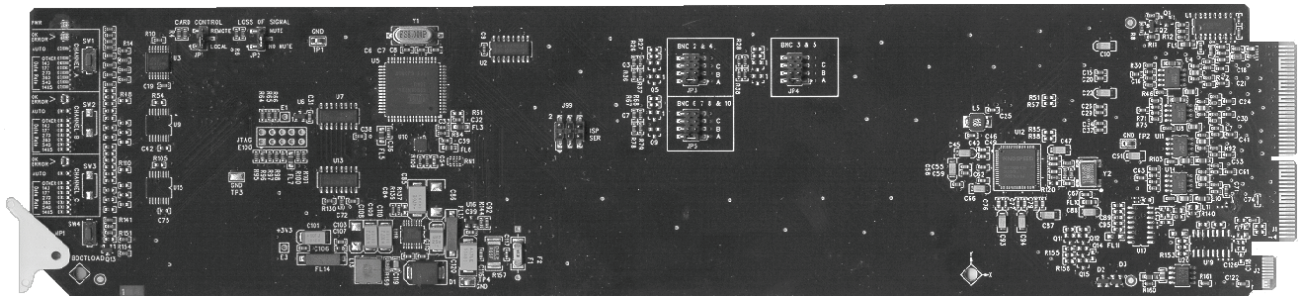


SRA-8201

Serial MD-SDI Reclocking Amplifier User Manual



Live Production Technology™

Ross Part Number: 8201DR-004

Issue: 04



SRA-8201 • Serial MD-SDI Reclocking Amplifier User Manual

- Ross Part Number: **8201DR-004**
- Document Issue: **04**
- Printed in Canada.

The information contained in this User Manual is subject to change without notice or obligation.

Copyright



© 2007 Ross Video Limited. All rights reserved.

Contents of this publication may not be reproduced in any form without the written permission of Ross Video Limited. Reproduction or reverse engineering of copyrighted software is prohibited.

Notice

The material in this manual is furnished for informational use only. It is subject to change without notice and should not be construed as a commitment by Ross Video Limited. Ross Video Limited assumes no responsibility or liability for errors or inaccuracies that may appear in this manual.

Trademarks

-  is a registered trademark of Ross Video Limited.
-  is a registered trademark of Ross Video Limited.
- Ross, ROSS, ROSS®, and MLE are registered trademarks of Ross Video Limited.
- All other product names and any registered and unregistered trademarks mentioned in this manual are used for identification purposes only and remain the exclusive property of their respective owners.

Important Regulatory and Safety Notices

Before using this product and any associated equipment, refer to the “Important Safety Instructions” listed below so as to avoid personnel injury and to prevent product damage.

Products may require specific equipment, and /or installation procedures be carried out to satisfy certain regulatory compliance requirements. Notices have been included in this publication to call attention to these Specific requirements.

Symbol Meanings



This symbol on the equipment refers you to important operating and maintenance (servicing) instructions within the Product Manual Documentation. Failure to heed this information may present a major risk of damage or injury to persons or equipment.



Warning

The symbol with the word “**Warning**” within the equipment manual indicates a potentially hazardous situation, which if not avoided, could result in death or serious injury.



Caution

The symbol with the word “**Caution**” within the equipment manual indicates a potentially hazardous situation, which if not avoided, may result in minor or moderate injury. It may also be used to alert against unsafe practices.



Notice

The symbol with the word “**Notice**” within the equipment manual indicates a situation, which if not avoided, may result in major or minor equipment damage or a situation which could place the equipment in a non-compliant operating state.



ESD

Susceptibility

This symbol is used to alert the user that an electrical or electronic device or assembly is susceptible to damage from an ESD event.

Important Safety Instructions



Caution

This product is intended to be a component product of the openGear 8000 series frame. Refer to the openGear 8000 series frame User Manual for important safety instructions regarding the proper installation and safe operation of the frame as well as it’s component products.



Warning

Certain parts of this equipment namely the power supply area still present a safety hazard, with the power switch in the OFF position. To avoid electrical shock, disconnect all A/C power cords from the chassis' rear appliance connectors before servicing this area.



Warning

Service barriers within this product are intended to protect the operator and service personnel from hazardous voltages. For continued safety, replace all barriers after any servicing.

This product contains safety critical parts, which if incorrectly replaced may present a risk of fire or electrical shock. Components contained within the product’s power supplies and power supply area, are not intended to be customer serviced and should be returned to the factory for repair.

To reduce the risk of fire, replacement fuses must be the same type and rating. Only use attachments/accessories specified by the manufacturer.

EMC Notices

US FCC Part 15

This equipment has been tested and found to comply with the limits for a class A Digital device, pursuant to part 15 of the FCC Rules. These limits are designed to provide reasonable protection against harmful interference when the equipment is operated in a commercial environment. This equipment generates, uses, and can radiate radio frequency energy and, if not installed and used in accordance with the instruction manual, may cause harmful interference to radio communications. Operation of this equipment in a residential area is likely to cause harmful interference in which case users will be required to correct the interference at their own expense.



Notice

Changes or modifications to this equipment not expressly approved by Ross Video Ltd. could void the user's authority to operate this equipment.

CANADA

This Class "A" digital apparatus complies with Canadian ICES-003.

Cet appareil numérique de classe "A" est conforme à la norme NMB-003 du Canada.

EUROPE

This equipment is in compliance with the essential requirements and other relevant provisions of **CE Directive 93/68/EEC**.

INTERNATIONAL

This equipment has been tested to **CISPR 22:1997** along with amendments **A1:2000** and **A2:2002** and found to comply with the limits for a Class A Digital device.



Notice

This is a Class A product. In domestic environments this product may cause radio interference in which case the user may have to take adequate measures.

Maintenance/User Serviceable Parts

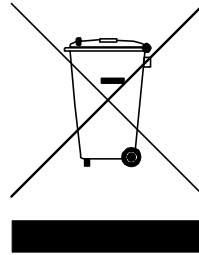
Routine maintenance to this openGear product is not required. This product contains no user serviceable parts. If the module does not appear to be working properly, please contact Technical Support using the numbers listed under the "Contact Us" section on the last page of this manual. All RossGear products are covered by a generous 5-year warranty and will be repaired without charge for materials or labor within this period. See the "Warranty and Repair Policy" section in this manual for details.

Environmental Information

The equipment that you purchased required the extraction and use of natural resources for its production. It may contain hazardous substances that could impact health and the environment.

To avoid the potential release of those substances into the environment and to diminish the need for the extraction of natural resources, Ross Video encourages you to use the appropriate take-back systems. These systems will reuse or recycle most of the materials from your end-of-life equipment in an environmentally friendly and health conscious manner.

The crossed-out wheeled bin symbol invites you to use these systems.



If you need more information on the collection, reuse, and recycling systems, please contact your local or regional waste administration.

You can also contact Ross Video for more information on the environmental performances of our products.

openGear Contents

Introduction	1-1
In This Chapter	1-1
A Word of Thanks	1-1
Overview	1-1
Functional Block Diagram	1-2
Features	1-2
Documentation Terms	1-2
Installation and Setup	2-1
In This Chapter	2-1
Static Discharge	2-1
Unpacking	2-1
Jumper Locations	2-2
JP1 — Card Control	2-2
JP2 — Loss of Signal	2-2
JP3, JP4, JP 5 — Output Channel Configuration	2-3
Rear Module Installation (Optional)	2-3
Board Installation	2-4
BNC Labels	2-4
Cable Connections	2-5
LEDs and Buttons	2-5
Rate Selection Switch and LED Functions	2-7
Factory Default Values	2-7
Remote Control	3-1
In This Chapter	3-1
DashBoard Control System Software	3-1
SNMP Monitoring and Control	3-4
Specifications	4-1
Technical Specifications	4-1
Service Information	5-1
In This Chapter	5-1
Troubleshooting Checklist	5-1
Power LED Conditions	5-2
Bootload Button	5-2
Warranty and Repair Policy	5-2

Ordering Information

6-1

SRA-8201 and Related Products 6-1

Introduction

In This Chapter

This chapter contains the following sections:

- A Word of Thanks
- Overview
- Functional Block Diagram
- Features
- Documentation Terms

A Word of Thanks

Congratulations on choosing the openGear **SRA-8201 Serial MD-SDI Reclocking Amplifier**. The SRA-8201 is part of a full line of Digital Products within the openGear Terminal Equipment family of products, backed by Ross Video's experience in engineering and design expertise since 1974.

You will be pleased at how easily your new SRA-8201 fits into your overall working environment. Equally pleasing is the product quality, reliability and functionality. Thank you for joining the group of worldwide satisfied Ross Video customers!

Should you have a question pertaining to the installation or operation of your SRA-8201, please contact us at the numbers listed on the back cover of this manual. Our technical support staff is always available for consultation, training, or service.

Overview

The SRA-8201 is a single channel Multi-Definition SDI distribution amplifier, capable of equalizing and reclocking all common serial digital signals. Support for both standard-definition and high-definition signals makes the SRA-8201 a universal SDI distribution amplifier.

The SRA-8201 equalizes the incoming SDI signal, compensating for up to 300m of cable at 270Mb/s and over 120m of cable at 1.485Gb/s. The signal is then reclocked with automatic rate detection for all popular data rates. LED indicators at the front of the card identify the presence of incoming video and the identified signal data rate for each channel independently.

Ten amplifiers can be housed in an 8300 series frame.

Functional Block Diagram

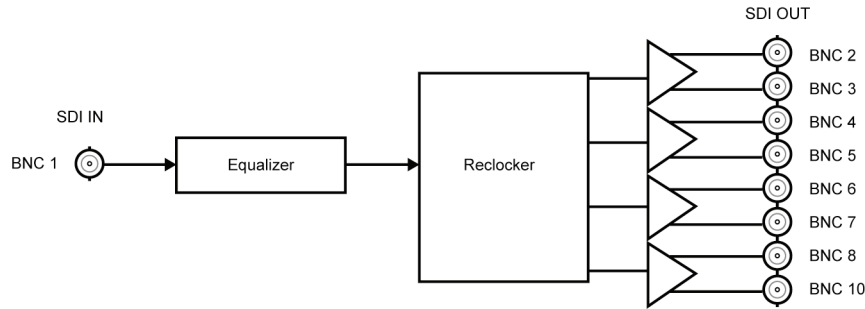


Figure 1. Simplified Block Diagram of SRA-8201 Functions

Features

The following features make the SRA-8201 the best solution for general SDI equalizing, reclocking, and distribution:

- One channel with 8 outputs
- Equalizes and reclocks all popular SDI signals from 143 Mb/s to 1.485 Gb/s
- Equalizes up to 300m of Belden 1694A cable at 270 Mb/s, or over 120m of cable at 1.485 Gb/s
- Automatic detection of incoming data rate
- LED indicators for signal presence and data rate
- Excellent input and output return loss exceeds SMPTE specifications
- Fits 8300 series frames
- 5 year transferable warranty

Documentation Terms

The following terms are used throughout this guide:

- “**Frame**” refers to the 8300 series frame that houses the **SRA-8201** card, both cooling and non-cooling versions, as well as any openGear frames.
- All references to 8300 series frames also include versions with the cooling fan option. Refer to your respective User Manuals for details.
- “**Operator**” and “**User**” both refer to the person who uses the **SRA-8201**.
- “**Board**”, and “**Card**” both refer to the **SRA-8201** unit itself, including all components and switches.
- “**System**” and “**Video system**” both refer to the mix of interconnected production and terminal equipment in which the **SRA-8201** operates.

Installation and Setup

In This Chapter

This chapter contains the following sections:

- Static Discharge
- Unpacking
- Jumper Locations
- JP1 - Card Control
- JP2 - Loss of Signal
- JP3, JP4, JP5 - Output Channel Configuration
- Rear Module Installation (Optional)
- Board Installation
- BNC Labels
- Cable Connections
- LEDs and Buttons
- Rate Selection Switch and LED Functions
- Factory Default Values

Static Discharge

Whenever handling the SRA-8201 and other related equipment, please observe all static discharge precautions as described in the following note:



Static discharge can cause serious damage to sensitive semiconductor devices. Avoid handling circuit boards in high static environments such as carpeted areas, and when wearing synthetic fiber clothing. Always exercise proper grounding precautions when working on circuit boards and related equipment.

Unpacking

Unpack each SRA-8201 you received from the shipping container, and check the contents against the packing list to ensure that all items are included. If any items are missing or damaged, contact your openGear sales representative or Ross Video directly.

Jumper Locations

The following sections describe the jumpers on the SRA-8201.

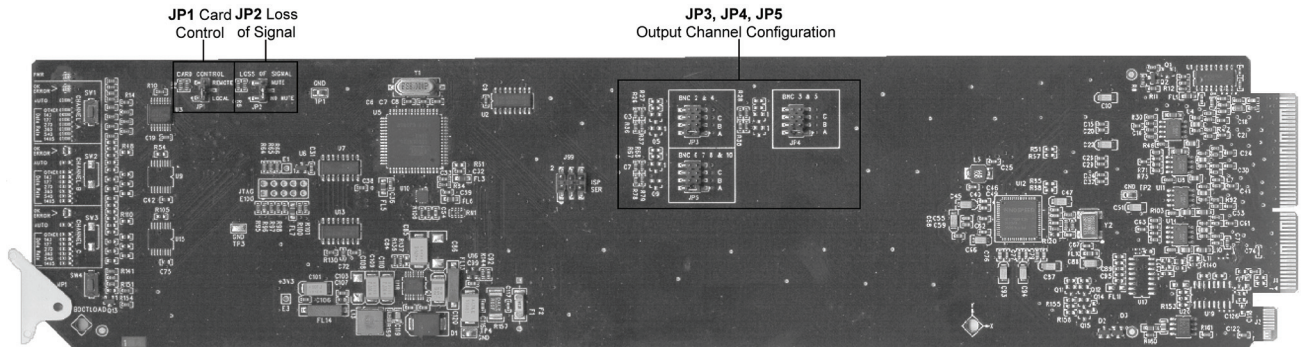


Figure 2. Jumper Locations

JP1 — Card Control

Note

JP1 controls access to card jumpers only. The card edge buttons can configure their parameters regardless of the setting.

JP1 selects whether the Output Mute and Output Channel Configuration jumper settings are respected or ignored when using the external remote control system. Using Figure 2, the card labeling, and the following descriptions, select one of the following options on **JP1**:

- **REMOTE** — the local jumper settings are ignored and the card is configured remotely.
- **LOCAL** — the local jumper settings are respected and the card is controlled locally. The card controls and status can be read remotely but not changed (default setting).

JP2 — Loss of Signal

Using Figure 2, the card labeling, and the following descriptions, select one of the following options on **JP2** to enable or disable the **Loss of Signal** option:

- **MUTE** — a channels outputs will be muted if the input signal degrades to the point that the input EQ can no longer guarantee error-free performance. When the red ERROR LED is on, the outputs will be muted.

If you have input channels set to any rate other than **Auto** mode, we recommend this jumper position. The output of the card would then mute if an incorrect data rate is applied to the input, or if the input signal became too weak for the input equalizer to compensate for.

- **NO MUTE** — a channels outputs will work to the limits of the input stage (default setting).

JP3, JP4, JP 5 — Output Channel Configuration

The SRA-8201 can be configured as a single-channel, eight output distribution amplifier. The following figure displays jumper configurations.

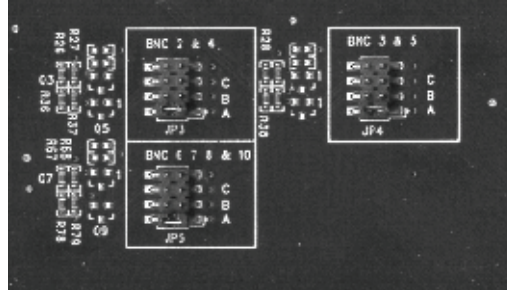


Figure 3. Channel Output Jumpers

Setting Output Channel Configuration Jumpers

For **JP3**, **JP4**, and **JP5**, set all jumpers to the **A** position, as show in Figure 3.

Note

Positions **B** and **C** are not used on the SRA-8201 and should not be selected. The top empty position for each jumper is for factory use only.

Rear Module Installation (Optional)

The SRA-8201 requires a 10-BNC rear module, and is also compatible with the 100-BNC rear module on the DFR-8310-BNC frame. If you are installing the DSS-8224 in an openGear DFR-8310-BNC frame, or the 10-BNC rear module is already present, skip this section. If you are installing the SRA-8201 in a DFR-8310-C-BNC or DFR-8310-BNC frame, skip this section.

Use the following procedure to install the RM-8300-B in a DFR-8310 digital distribution frame:

1. Refer to the 8300 series frame User Manual, to ensure that the frame is properly installed according to instructions.
2. On the rear of the 8300 series frame, locate the card frame slot.
3. As shown in Figure 4, seat the bottom of the RM-8300-B in the seating slot at the base of the frames back plane.

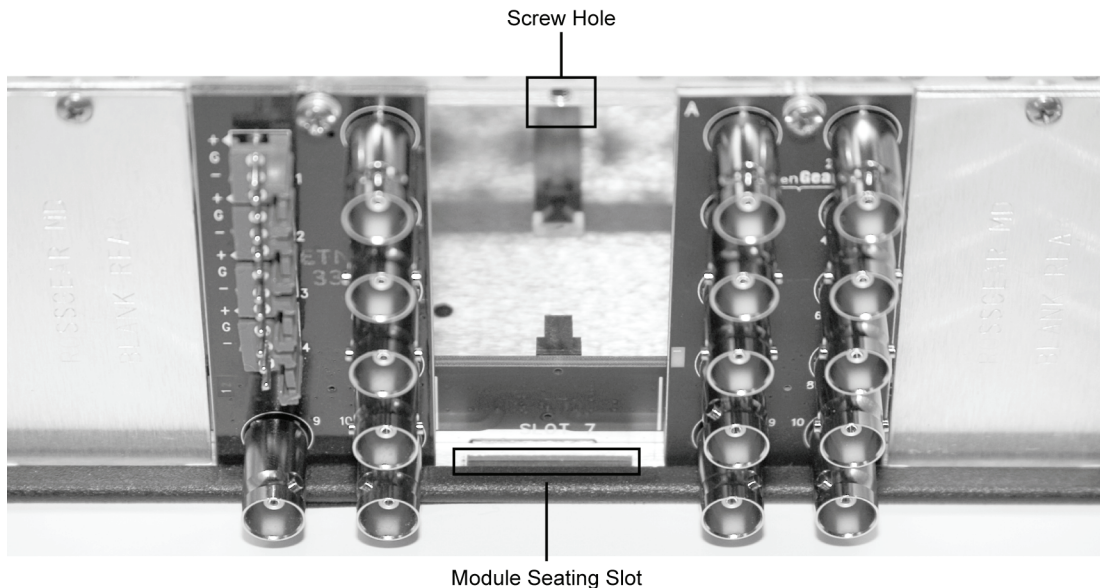


Figure 4. Rear Module Installation

4. Align the top hole of the RM-8300-B with the screw hole on the top edge of the 8300 series back plane.
5. Using a Phillips driver and the supplied screw, fasten the RM-8300-B panel to the DFR-8310 back plane. Do not over tighten.

This completes the procedure for installing the RM-8300-B in an 8300 series frame.

Board Installation

Use the following procedure to install the SRA-8201 in an 8300 series frame :

1. Refer to the User Manual of your 8300 series frame to ensure that the frame is properly installed according to instructions.

Note

Heat and power distribution requirements within a frame may dictate specific slot placement of cards. Cards with many heat-producing components should be arranged to avoid areas of excess heat build-up, particularly in frames using convectional cooling.

2. After selecting the desired frame installation slot, hold the SRA-8201 card by the edges and carefully align the card edges with the slots in the frame. Then fully insert the card into the frame until the rear connection plugs are properly seated on the midplane and rear modules.

This completes the procedure for installing the SRA-8201 in an 8300 series frame.

BNC Labels

Affix the supplied BNC label, as per the included instructions, to the BNC area on the rear of the rack frame.

Cable Connections

This section provides instructions for connecting cables to the installed BNC rear modules on your 8300 series frame backplane. Connect the input and output cables according to the following diagram. The inputs are internally terminated in 75 ohms. It is not necessary to terminate unused outputs.

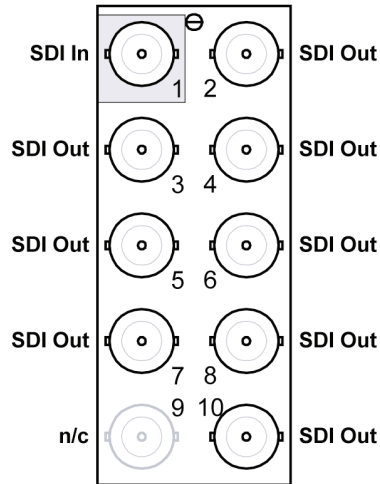


Figure 5. BNC Designations for the SRA-8201 Rear Module

LEDs and Buttons

The SRA-8201 is a single channel distribution amplifier, and will only have components installed into the **CHANNEL A** section of the card. Channels **B** and **C** are not applicable to the SRA-8201.

The following sections describe the SRA-8201 LEDs and buttons:

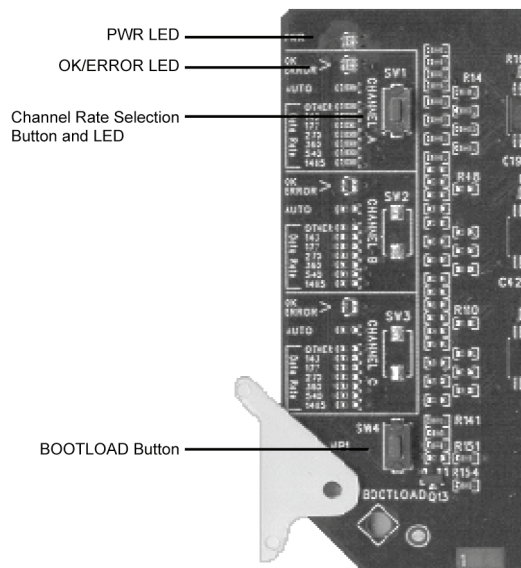


Figure 6. LED and Rate Selection Switch Locations

PWR (Power) LED

The top front edge of the card has a Power LED which indicates card status. The Power LED displays green when the card is operational. If the card is not operational or the LED is not displaying green, refer to the chapter, “**Service Information**”, of this manual.

OK/Error LED

Channel A has an OK/ERROR LED. The LED displays the following conditions:

- **Green** — channel is reclocking a valid signal.
- **Red** — invalid signal or rate setting, channel cannot reclock.

Channel Rate Selection Buttons and LEDs

Channel A has a rate selector button and rate LEDs to set the input signal rate that the channel will process. Pressing the button will illuminate a corresponding LED. Repeated presses will cycle through the selections.

For most applications, setting the Channel Rate to **AUTO** (default setting) will allow the SRA-8201 to automatically detect the incoming data rate. In **AUTO** mode, the Data Rate LEDs will display the data rate detected from the incoming SDI signal.

For applications where only one specific data rate will be used, and the fastest possible lock times are desired, the SRA-8201 can be locked to a specific data rate. Press the Channel Rate Selection Button until the **AUTO LED** is off, and the specific data rate LED is illuminated. Only SDI signals matching the selected data rate will be reclocked and passed through the SRA-8201.

Bootload Button

This button can be used to reset a channel to factory settings. Refer to the section below for details.

This button is used for factory service in the unlikely event of a complete card failure. The Bootload process is further described in the chapter, “**Service Information**”, of this manual.

Rate Selection Switch and LED Functions

The following table provides information on the Rate Selection Switch and LED functions.

Table 1. SRA-8201 Rate Selection Switch and LED Functions

Data Rate LED Displays								Description
AUTO	OTHER	143	177	270	360	540	1485	
☼		☼ Cycling through LEDs						Channel searching incoming signal for a valid data rate (default setting).
☼		☼						Auto mode, channel detects and reclocks 143Mb/s.
☼				☼				Auto mode, channel detects and reclocks 270Mb/s.
☼					☼			Auto mode, channel detects and reclocks 360Mb/s.
☼						☼		Auto mode, channel detects and reclocks 540Mb/s.
☼							☼	Auto mode, channel detects and reclocks 1.485Gb/s.
		☼						Channel set to reclock 143Mb/s.
			☼					Channel set to reclock 177Mb/s.
				☼				Channel set to reclock 270Mb/s.
					☼			Channel set to reclock 360Mb/s.
						☼		Channel set to reclock 540Mb/s.
							☼	Channel set to reclock 1.485Gb/s.
	☼							Channel equalizes (not reclock) any SDI signal from 143Mb/s to 1.485Gb/s.

☼ = Illuminated LED

Factory Default Values

Any input channel can be set back to factory settings, where the data rate is set to **AUTO** and the alarm is enabled on loss of input.

Use the following procedure to reset a channel to factory default values:

1. Press and hold the **Bootload** button on the card.
2. Press the rate selection button for the selected channel.

The **Signal Status LED** flashes green and red for approximately 2 seconds to confirm the reset values.

Remote Control

In This Chapter

This section provides a detailed explanation on using remote control functions with your SRA-8201. The following topics are discussed:

- DashBoard Control System Software
- SNMP Monitoring and Control

DashBoard Control System Software

The DashBoard Control System enables you to monitor and control openGear frames and controller cards from a computer. DashBoard communicates with other cards in the DFR-8310 frame through the MFC-8310-N Network controller card. This card is required in order to use DashBoard to configure the SRA-8201.

The DashBoard software and manual can be downloaded from the Ross Video website.

Using the Menus

You must first install the DashBoard Control System software on your computer. Refer to the *DashBoard User Manual* for software installation procedures and using the DashBoard interface.

The Menu System

The following table and sections describe the menus, items, and parameters available from the DashBoard Control System software for the SRA-8201 Reclocking Amplifier.

Note

In the **Setup** menu, if you have input channels set to any rate other than **Auto Mode**, the **Mute** option is recommended. The output of the card would then mute if an incorrect data rate is applied to the input, or if the input signal became too weak for the input equalizer to compensate.

Note

In the **Setup** menu, when **Auto** is selected as an input rate, the data rate of 177 MHz is not detected..

Table 2. SRA-8201 DashBoard Menus

Menu	Item	Parameters	Description
Product (Read-only)	Product	SRA-8201	
	Supplier	Ross Video Ltd.	
	Board Rev	##	
	Serial Number	#####-###	
	Software Rev	###a	
Hardware (Read-only)	Voltage (mV)	#	Supple Voltage
	Current (mA)	#	Current consumption of card
	Rear Module	#	
	CPU Headroom	#	Processing power available
	RAM Available (bytes)	#	On-board processing memory available
	EE Bank	#	Storage count
Signal (Read-only)	Signal Status	Green Indicator – OK	All channels are passing a valid signal
		Red Indicator – Input Unlocked	The channel cannot reclock due to an invalid signal or rate setting
	Input Status	Locked – 143 MHz	Input is OK with the specified bit rate
		Locked – 177 MHz	Input is OK with the specified bit rate
		Locked – 270 MHz	Input is OK with the specified bit rate
		Locked – 360 MHz	Input is OK with the specified bit rate
		Locked – 540 MHz	Input is OK with the specified bit rate
		Locked – 1485 MHz	Input is OK with the specified bit rate
		Bypass	Signal present, channel configured to “Bypass” and is not reclocked
		No signal	No signal present
No signal – muted	No signal present, output is muted		

Menu	Item	Parameters	Description
		Unlocked	Input present, PLL is unlocked
		Unlocked – muted	Input present, PLL is unlocked, output is muted
Setup	Input Rate**	Auto*	The SRA-8201 card automatically detects the incoming data rate for the specified channel
		Bypass	The SRA-8201 card does not reclock the input rate for the specified channel
		143 MHz	
		177 MHz	
		270 MHz	
		360 MHz	
		540 MHz	
		1485 MHz	
	Loss of Input	Alarm*	The Input Status field displays the status for the input
		Ignore	The Input Status field ignores the status for the input
	Low Signal**	Pass*	The channel outputs work to the limits of the input stage
		Mute	The channel outputs are muted if the input signal degrades to the point that the input EQ can no longer guarantee error-free performance
	Edit Permission – JP1 Set to Remote	Unlocked*	All configurable menu options are editable
		Locked	All configurable menu options, except this one, are locked and are read-only
	Edit Permission – JP1 set to Local	Local Only*	All configurable menu options are locked and are read-only
	Factory Defaults	Reset	

* = Default Setting

** = See Note above Table 2

SNMP Monitoring and Control

The MFC-8310-N Network Controller card in the 8300 series frame provides optional support for remote monitoring and control of your frame and SRA-8201 using Simple Network Management Protocol (SNMP), which is compatible with many third-party monitoring and control tools.

Refer to your SRA-8201 Management Information Base (MIB) file for a breakdown of SNMP controls on this card.

Refer to your 8300 series frame user manual for additional information on SNMP Monitoring and Control.

Specifications

Technical Specifications

Table 3. SRA-8201 — Technical Specifications

Category	Parameter	Specification
Serial Digital Video Inputs	Number of Inputs	1
	Data Rates and SMPTE Standards Accommodated	143Mb/s, NTSC Composite, SMPTE 259M-A 177Mb/s, PAL Composite, SMPTE 259M-B 270Mb/s, 525/625 Component, SMPTE 259M-C 360Mb/s, 525/625 Component (wide screen), SMPTE 259M-D 540Mb/s, 525/625 Component (wide screen), SMPTE 344M 1.485 or 1.4835 Gb/s Component, SMPTE 292M
	Impedance	75Ω terminating
	Equalization	Over 120m of Belden 1694A cable @ 1.485Gb/s or up to 300m @ 270Mb/s
	Return Loss	>15dB to 1.485GHz
Serial Digital Video Outputs	Number of Outputs	8
	Impedance	75Ω
	Return Loss	>15dB to 1.485GHz
	Signal Level	800mV ±10%
	DC Offset	0 Volts ±50 mV
	Rise & Fall Time (20-80%)	700ps. Typical (270Mb/s) 120ps. Typical (1.485Gb/s)
	Overshoot	<8%
Other	Total Power Consumption	2.9W
	Warranty	5 year transferable

Specifications are subject to change without notice

Service Information

In This Chapter

This chapter contains the following sections:

- Troubleshooting Checklist
- Power LED Conditions
- Bootload Button
- Warranty and Repair Policy

Troubleshooting Checklist

Routine maintenance to this openGear product is not required. In the event of problems with your SRA-8201, the following basic troubleshooting checklist may help identify the source of the problem. If the module still does not appear to be working properly after checking all possible causes, please contact your openGear products distributor, or the Technical Support department at the numbers listed under the “Contact Us” section at the end of this manual.

1. **Visual Review** — Performing a quick visual check may reveal many problems, such as connectors not properly seated or loose cables. Check the module, the frame, and any associated peripheral equipment for signs of trouble.
2. **Power Check** — Check the power indicator LED on the distribution frame front panel for the presence of power. If the power LED is not illuminated, verify that the power cable is connected to a power source and that power is available at the power main. Confirm that the power supplies are fully seated in their slots. If the power LED is still not illuminated, replace the power supply with one that is verified to work.
3. **Input Signal Status** — Verify that source equipment is operating correctly and that a valid signal is being supplied.
4. **Output Signal Path** — Verify that destination equipment is operating correctly and receiving a valid signal.
5. **Unit Exchange** — Exchanging a suspect unit with a unit that is known to be working correctly is an efficient method for localizing problems to individual units.

Power LED Conditions

The top front edge of the module has a Power LED which indicates card status. The Power LED displays the following conditions:

- **Off** — no power to the card.
- **Amber** — the card is running internal diagnostics while powering up.
- **Green** — normal operation.
- **Flashing Green** — **Bootload** is button pressed, and the card is receiving a new software load from the frame.
- **Green/Flashing Amber** — signal or configuration problem, check signal status and settings.
- **Red** — solid or flashing means the card is not operational. Reseat card in frame, check the rear I/O module type and connections, or call openGear Technical Support.

Bootload Button

In the unlikely event of a complete card failure, you may be instructed by a Ross Technical Support specialist to perform a complete software reload on the SRA-8201. To perform this task, perform the following steps:

1. Eject the card
2. Press and hold the **Bootload** button, while re-inserting the card into the frame.
3. Release the button.

The **PWR LED** will flash GREEN while the card is waiting for a new software load.

If a new software load is not sent to the card within 60 seconds, the card will attempt to restart with it's last operational software load.

Software loads can be sent to the SRA-8201 using the MFC-8310-N Frame Controller with Networking, or via connection to the openBUS on the rear of the frame.

Warranty and Repair Policy

The openGear SRA-8201 is warranted to be free of any defect with respect to performance, quality, reliability, and workmanship for a period of FIVE (5) years from the date of shipment from our factory. In the event that your RossGear SRA-8201 proves to be defective in any way during this warranty period, Ross Video Limited reserves the right to repair or replace this piece of equipment with a unit of equal or superior performance characteristics.

Should you find that this openGear SRA-8201 has failed after your warranty period has expired, we will repair your defective product should suitable replacement components be available. You, the owner, will bear any labor and/or part costs incurred in the repair or refurbishment of said equipment beyond the FIVE (5) year warranty period.

In no event shall Ross Video Limited be liable for direct, indirect, special, incidental, or consequential damages (including loss of profits) incurred by the use of this product. Implied warranties are expressly limited to the duration of this warranty.

This openGear SRA-8201 User Manual provides all pertinent information for the safe installation and operation of your RossGear Product. Ross Video policy dictates that all repairs to the openGear SRA-8201 are to be conducted only by an authorized Ross Video Limited factory representative. Therefore, any unauthorized attempt to repair this product, by anyone other than an authorized Ross Video Limited factory representative, will automatically void the warranty. Please contact Ross Video Technical Support for more information.

In Case of Problems

Should any problem arise with your openGear SRA-8201, please contact the Ross Video Technical Support Department. (Contact information is supplied at the end of this publication.)

A Return Material Authorization number (RMA) will be issued to you, as well as specific shipping instructions, should you wish our factory to repair your openGear SRA-8201. If required, a temporary replacement module will be made available at a nominal charge. Any shipping costs incurred will be the responsibility of you, the customer. All products shipped to you from Ross Video Limited will be shipped collect.

The Ross Video Technical Support Department will continue to provide advice on any product manufactured by Ross Video Limited, beyond the warranty period without charge, for the life of the equipment.

Ordering Information

SRA-8201 and Related Products

Your **SRA-8201 Serial MD-SDI Reclocking Amplifier** is a part of the openGear family of products. Ross Video offers a full line of openGear terminal equipment including distribution, conversion, monitoring, synchronizers, encoders, decoders, keyers, switchers, as well as analog audio and video products.

Standard Equipment

- **SRA-8201** Serial MD-SDI Reclocking Amplifier
- **8201DR-004** Serial MD-SDI Reclocking Amplifier User Manual

Optional Equipment

- **8201DR-004** Serial MD-SDI Reclocking Amplifier User Manual (additional User Manual)
- **RM-8300-B** Gear MD Rear Module, SRA-8201 (10 BNC connector)
- **DFR-8310** Digital Products Frame and Power Supply (2RU, holds 10 cards)
- **DFR-8310-C** Digital Products Frame and Power Supply with Cooling Fans (2RU, holds 10 cards)
- **DFR-8310-BNC** Digital Products Frame and Power Supply with fixed 100-BNC Rear Module. (2RU, holds 10 cards)
- **DFR-8310-C-BNC** Digital Products Frame and Power Supply with fixed 100-BNC Rear Module and Cooling Fans. (2RU, holds 10 cards)
- **DFR-8310-N** Digital Products Frame and Power Supply with cooling fans, and MFC-8310-N card. (2RU, holds 10 cards)
- **DFR-8310-N-BNC** Digital Products Frame and Power Supply with cooling fans, 100-BNC Rear Module, and MFC-8310-N card. (2RU, holds 10 cards)
- **MFC-8310-N** Network Controller Card (additional)

Notes:

Notes:

Contact Us

Contact our friendly and professional support representatives for the following:

- Name and address of your local dealer
- Product information and pricing
- Technical support
- Upcoming trade show information

PHONE	General Business Office and Technical Support	613 • 652 • 4886
	After-hours Emergency	613 • 349 • 0006
	Fax	613 • 652 • 4425
E-MAIL	General Information	solutions@rossvideo.com
	Technical Support	techsupport@rossvideo.com
POSTAL SERVICE	Ross Video Limited	8 John Street, Iroquois, Ontario, Canada K0E 1K0
	Ross Video Incorporated	P.O. Box 880, Ogdensburg, New York, USA 13669-0880

Visit Us

Please visit us at our website for:

- Company information
- Related products and full product lines
- On-line catalog
- Trade show information
- News
- Testimonials

www.rossvideo.com
