

TouchDrive 3.1.0

- Release Date: June, 2024.



Important: Please review the **End User Software License Agreement** before installing or using this software.



Important: If your TouchDrive is connected to an Ultrix Acuity frame you must switch it to Carbonite mode, perform the upgrade, and then switch it back to Acuity® mode.

Qseven® and SGET are trademarks or registered trademarks of Standardization Group for Embedded Technologies e.V. (SGET).

AMD, Ryzen™, and combinations thereof are trademarks of Advanced Micro Devices, Inc.

Feature Enhancements

A number of features have been added, or updated, to this version of software. This section provides a brief introduction to these features, and how to use them.

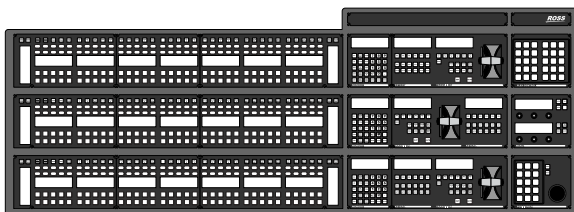
v3.1.0 Features

TouchDrive x3 and x4 Panels

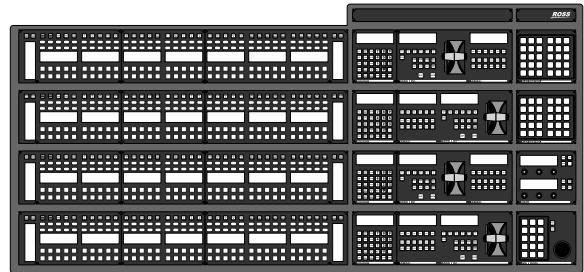
Support has been added for the new 35 crosspoint TDx3 and TDx4 panels with the Dual Delegation rows. These new panels come with a number of new and updated areas to better enhance operation.

Note: The TDx3 and TDx4 panels are currently only supported by Ultrix Acuity 14.0a, or higher. Support by the Carbonite family of switchers is scheduled for version 9.1.0.

TDx3 Panel



TDx4 Panel



Dual Delegation Row

Each Dual Delegation (DD) panel row has four buses of video source buttons (2×Keyer, Background, and Preset). The Dual Delegation row has two independent buses with integrated mnemonic displays in the button. When the button is assigned to a source, memory, or custom control the name of the assignment is shown in the button.

Bugs Addressed

The following bugs were addressed in this version of software:

HWRev02 (Qseven®)

- No bugs were addressed in this version of software.

HWRev03 / 4882AR Series (AMD Ryzen™)

- CR-4637 — TD3/TD4 Flex Control initialization errors on bootup.

Known Issues and Limitations

Keep these notes in mind when upgrading your system to this version of software. Contact Ross Video Technical Support if you have any questions about performing a software upgrade.

Operational Notes

The following issues have been identified when working with the control panel:

- **DashBoard Auto Detect** — The TouchDrive control panel, hardware revision 03, will not be auto detected by DashBoard.

- **DashBoard Downgrade** — When you upgrade to version 2.1.1 the version of DashBoard on the control panel will be changed to 9.5.3. You must manually upgrade DashBoard after upgrading the panel software.

Software Upgrade

Before starting the upgrade, ensure that you have the following upgrade files, depending on the revision of your hardware:

- **Panel Upgrade (HW Rev 01-02)(Qseven®)** — touchdrive-HWRev02-V3.0.440.tgz
- **Panel Upgrade (HW Rev 03 / 4882AR Series)(AMD Ryzen™)** — touchdrive-HWRev03-V3.0.1.447.tgz
- **DashBoard Upgrade** — DB9.8.0_linux.gtk.x86_64.tar.gz

Note: If your TouchDrive is connected to an Ultrix Acuity frame you must switch it to Carbonite mode, perform the upgrade, and then switch it back to Acuity® mode.

Hardware/Software Compatibility

Before starting the upgrade, ensure that you have the correct files for your revision of hardware.

Table 1: Hardware Revisions and Minimum Software Compatibility

Item	Hardware Revision		
	01-02 (Qseven®)	03 (AMD Ryzen™)	4882AR (AMD Ryzen™)
TD Recovery (OS)	HWRev02-V3.1.0.535 or higher	HWRev03-V3.1.0.535 or higher	
TouchDrive Software	HWRev02-V3.1.0.535 or higher	HWRev03-V3.1.0.535 or higher	
Ultrix Acuity Software	14.0a or higher		
Ultra Software	9.0.0 or higher		

Item	Hardware Revision		
	01-02 (Qseven®)	03 (AMD Ryzen™)	4882AR (AMD Ryzen™)
Ultrix Carbonite Software	9.0.0 or higher		
Ultra 60 Software	9.0.0 or higher		
Carbonite Black Software	--		
Carbonite Software	--		
Graphite Software	--		
Graphite CPC Software	--		

Note: The TD OS Recovery Kit is available for download from the Ross Video website.

Note: The TD3 and TD4 panels require TD software and OS version 3.0.0, or higher.

Note: The TDx3 and TDx4 panels require TD software and OS version 3.1.0, or higher.

To Upgrade the Panel (Carbonite Mode Only)

Upgrade the software on the TouchDrive control panel when it is in Carbonite mode.



Important: Before starting the upgrade, check the revision of TouchDrive hardware you have. The revision of the hardware is shown on a label affixed to the bottom of the control panel. The part number (PN:) contains the series as the first four numbers and revision as the last two numbers in the sequence. So 4880AR-212-03 indicates the 4880AR series and revision 03 hardware.

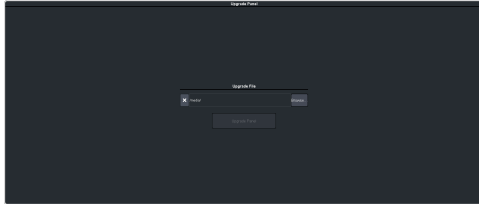


Important: Do NOT turn the control panel power off during the upgrade. Doing so may corrupt the software or damage the control panel components.

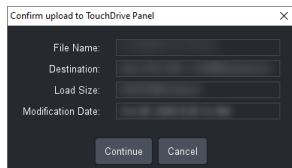
Tip: The control panel can be upgraded from a remote DashBoard computer or from the panel itself. If you are

upgrading from the panel, you must put the upgrade file onto a USB and insert that USB into a USB port on the control panel.

1. Download the software for your revision of hardware:
 - **HW Rev 01-02 (Qseven®)** — touchdrive-HWRev02-V3.0.440.tgz
 - **HW Rev 03 / 4882AR Series (AMD Ryzen™)** — touchdrive-HWRev03-V3.0.1.447.tgz
2. From the tree view for the control panel, double-click **Configuration > Upgrade Panel**.



3. Click **Browse...** and navigate to the control panel upgrade file.
4. Select the panel upgrade file and click **Open**.
5. Click **Upgrade Panel**.
6. Click **Yes**.
7. Click **Continue** to upload the upgrade file to the control panel and start the upgrade.



8. Wait for the Dashboard pages to come back up. This may take a few minutes.

To Upgrade Dashboard on the Control Panel (Carbonite Mode Only)

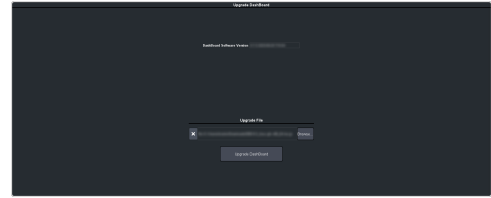
Upgrade the Dashboard control system software on the TouchDrive control panel when it is in Carbonite mode.



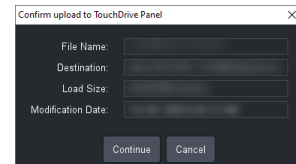
Important: Do NOT turn the control panel power off during the upgrade. Doing so may corrupt the software or damage the control panel components.

Tip: The control panel can be upgraded from a remote Dashboard computer or from the panel itself. If you are upgrading from the panel, you must put the upgrade file onto a USB and insert that USB into a USB port on the control panel.

1. Download the DB9.8.0_linux.gtk.x86_64.tar.gz (the Linux® version) Dashboard software.
2. From the tree view for the control panel, double-click **Configuration > Upgrade Dashboard**.



3. Click **Browse...** and navigate to the Dashboard upgrade file.
4. Select the Dashboard upgrade file and click **Open**.
5. Click **Upgrade Dashboard**.
6. Click **Yes**.
7. Click **Continue** to upload the upgrade file to the control panel and start the upgrade.



8. Wait for the Dashboard pages to come back up. This may take a few minutes.

TouchDrive Panel Boot Mode

The TouchDrive control panel can control either an Acuity® or Carbonite based switcher by booting in either Acuity® or Carbonite mode.

If you want to connect the TouchDrive panel to an Acuity® or Carbonite switcher, you must switch the panel to boot in that mode. If the panel is in Carbonite mode and you want to connect to an Acuity® frame, you must boot up the panel, navigate to the menu and switch it to Acuity® mode.

Note: To switch between Acuity® and Carbonite modes, you must be running Acuity® v12.1a, or higher, and TouchDrive 2.1, or higher.

Note: Once you have booted the panel in the proper mode, refer to the documentation for your switcher for connecting a control panel to your frame.

To Switch TouchDrive to Acuity®



Important: The Acuity® frame must be running software version **12.1a**, or higher, to connect to the TouchDrive control panel.

1. Power on the control panel and wait for DashBoard to load on the touchscreen display.
2. From the tree view for the control panel, double-click **Configuration > Switch to Acuity mode**
3. Click **Switch & Reboot**.

Note: This function is only available on the DashBoard menus running on the control panel. It is not available on remote DashBoard connections.

The control panel will reboot into Acuity® mode.

To Switch TouchDrive to Carbonite



Important: The Carbonite frame must be running the minimum software, or higher, to connect to the TouchDrive control panel that is configured as Dual Boot. Refer to [TouchDrive OS Recovery Upgrade](#) for compatibility information.

1. Power on the control panel and wait for Acuity® menu to load on the touchscreen display.
2. Press the **Home** button three (3) times to put the panel into setup mode.
3. Press **HOME > More > System Shutdown > More > Switch to Carbonite**.

The control panel will reboot into Carbonite mode.