

VERSION 11.2.0

12/15/2023

Product Release Notes

Streamline Pro

ROSS

STREAMLINE PRO RELEASE NOTES

Welcome to the Streamline Pro v11.2.0 Release Notes. Please read this document to find important information on areas of Streamline Pro that may not be covered in the Getting Started Guide or the User Help system.

CONTENTS

STREAMLINE PRO RELEASE NOTES	1
VERSION HISTORY	2
VERSION 11.2.0 – DECEMBER 2023.....	2
WHAT'S NEW.....	2
BUGS ADDRESSED.....	3
CERTIFICATIONS.....	4
VERSION 11.1.0 – SEPTEMBER 2023.....	5
WHAT'S NEW.....	5
BUGS ADDRESSED.....	5
CERTIFICATIONS.....	6
VERSION 11.0.0 – JUNE 2023.....	7
WHAT'S NEW.....	7
CERTIFICATIONS.....	8
KNOWN ISSUES	10
GETTING HELP	11

VERSION HISTORY

VERSION 11.2.0 – DECEMBER 2023

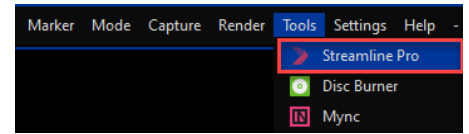
WHAT'S NEW

- SUPPORTS EDIUS X WORKGROUP FOR NEWS WORKFLOWS**
 The Streamline Pro (NLE) Plugin now supports EDIUS news workflows. In the EDIUS interface, simply navigate to **Tools > Streamline Pro Plugin** to open it.

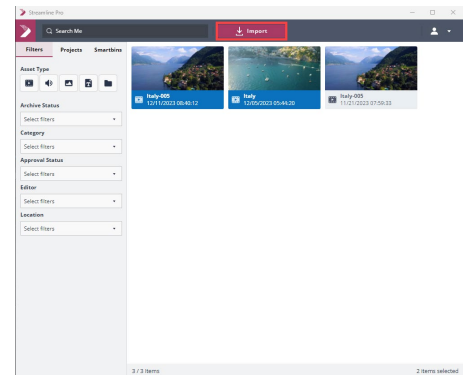
- Import Multiple Assets** — You can import one or multiple assets from the Streamline Pro Plugin.

- Export Wizard** — Export placeholders with ease using the Streamline Pro (NLE) Plugin's **Export** wizard.

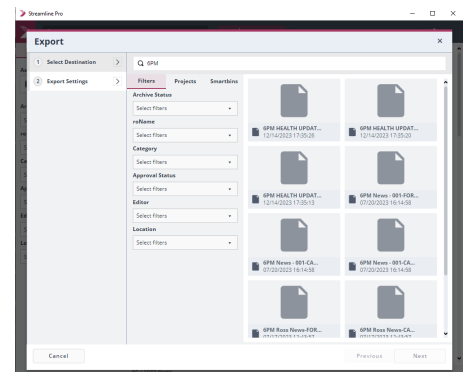
- Admin Features** — Administrators can use a Windows Batch File to facilitate installation processes and use new Logging capabilities to diagnose issues.



EDIUS User Interface (UI) Tools Menu
 Navigate to **Tools > Streamline Pro**.



Streamline Pro (NLE) Plugin
 Displays selected assets ready for import.

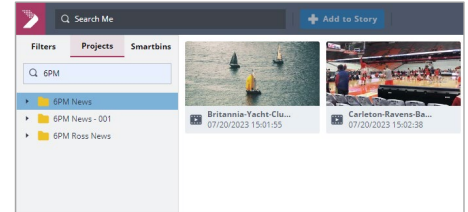


Export Wizard
 In EDIUS, go to **File > Export > Print to File**. Use the **Streamline Pro Exporter Preset** and the Export wizard opens in the plugin.

• **USER INTERFACE ENHANCEMENTS TO STREAMLINE PRO PLUGIN (MOS & NLE*)**

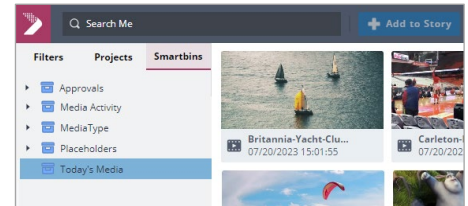
***NOTE:** The Streamline Pro plugin is available in two versions: one for MOS newsrooms, such as Ross Inception, and another for Non-Linear Editors, such as EDIUS. Features may vary based on restrictions in development with third-party applications.

- **Access to Projects** — Users can now search for assets based on their project in the **Projects** tab of the Streamline Pro (NLE) Plugin.



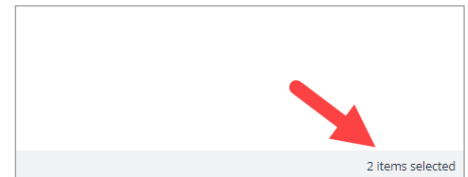
Projects Tab

- **Access to Smartbins** — Users can now search for assets using smartbins in the **Smartbins** tab of the Streamline Pro (NLE) Plugin.



Smartbins Tab

- **New Selection Counter** — A selection counter displays the number of items selected in the bottom right corner of the Streamline Pro Plugin.



Selection Counter

BUGS ADDRESSED

- Fixed an issue where assets remained selected even when the view was changed. (SP-68)
- Fixed an issue where placeholders couldn't be created from ENPS stories that exceeded 5000 characters. (SP-199)
- Fixed an issue where padding did not appear between assets in the Asset view area of the Streamline Pro (NLE) plugin. (SP-245)

CERTIFICATIONS

UPGRADE NOTE

Streamline Pro and Streamline Xchange cannot be installed on mixed OS environments (for example, Streamline Pro on Linux and Streamline Xchange on Windows or the reverse).

- **OPERATING SYSTEMS**
Windows Server 2019 (Server)
Windows Server 2022 (Server)
Windows 10 (Client)
- **BROWSERS**
For Windows - Chrome 96.0 (Client)
For macOS – Chrome 96.0 and Safari 15.0 (Client)
- **EDITORS**
Adobe Premiere 2022 (v22.3.1 — Build 2) (Windows)
- **SUPPORTED ROSS PRODUCT VERSIONS**
Streamline Xchange v10.1.0
Streamline Xchange Adobe Panel v10.1.0
Workflow Suite v8.2.1
Inception v16.0.0
Overdrive v21.3
- **SUPPORTED THIRD PARTY PRODUCTS**
AP ENPS v9.4
EDIUS X Workgroup v10.34

VERSION 11.1.0 – SEPTEMBER 2023

WHAT'S NEW

- SUPPORT FOR PLACEHOLDER WATCH FOLDER WORKFLOW

Video editors can now register a file to a placeholder using a watch folder. (PRM-1737)

- OPTION TO TURN OFF TARGET INFORMATION IN MOS OBJECT

Comissioners can use a new VM argument that, when set to `true`, allows you to disable the target information to support third party integrations that require the **objID** field. (PRM-1852)

#To set the Asset ID

```
-Dstreamline.mosobj.remove_target_info=true
```

- ENFORCE DEFAULT TARGET AS PLAYOUT LOCATION

Producers can transfer files to a playout device automatically once a rundown is monitored. Includes support for the new option to turn off target information. (PRM-1688)

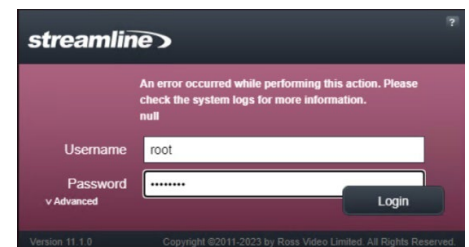
- NEW 'AssetID' OPTION IN FILE STORAGE NAMING RULES

There is a new file storage naming rule that renames the file using the asset ID instead of the name. For example, a **parachuting.mxf** file with the asset ID of **4351**, would be renamed **4351.mxf** when it's sent to storage. (PRM-1837)

BUGS ADDRESSED

- Fixed a usability issue affecting large monitors, where the scroll bar malfunctioned when the search criteria matched 50 or more assets. (PRM-1767)

- Fixed a login issue, where administrators attempting to log in to Streamline Pro without configuring the settings to use Streamline Xchange triggered an error. (PRM-1788)



Error Message

- Fixed a placeholder error, where placeholders with the same name in a rundown fails on the second time. (PRM-1836)

CERTIFICATIONS

UPGRADE NOTE

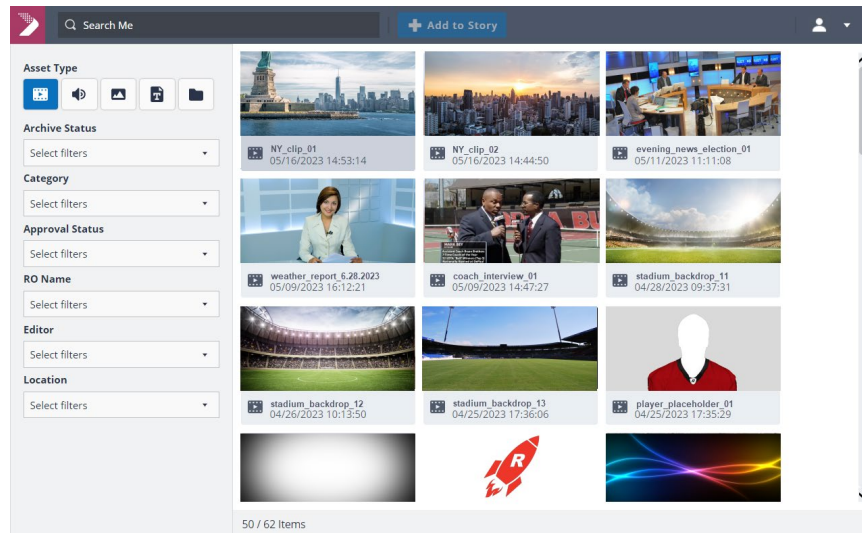
Streamline Pro and Streamline Xchange cannot be installed on mixed OS environments (for example, Streamline Pro on Linux and Streamline Xchange on Windows or the reverse).

- **OPERATING SYSTEMS**
Windows Server 2019 (Server)
Windows Server 2022 (Server)
Windows 10 (Client)
- **BROWSERS**
For Windows - Chrome 96.0 (Client)
For macOS – Chrome 96.0 and Safari 15.0 (Client)
- **EDITORS**
Adobe Premiere 2022 (v22.3.1 — Build 2) (Windows)
- **SUPPORTED ROSS PRODUCT VERSIONS**
Streamline Xchange v10.0.6
Streamline Xchange Adobe Panel v10.0.6
Workflow Suite v8.2.1
Inception v15.7.1
Overdrive v21.3
- **SUPPORTED THIRD PARTY PRODUCTS**
AP ENPS v9.3, v9.4

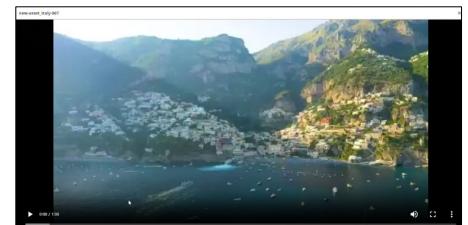
VERSION 11.0.0 – JUNE 2023

WHAT'S NEW

- STREAMLINE PRO**
 Streamline Pro is a Media Asset Management (MAM) platform that leverages our existing Streamline Xchange MAM and Streamline Classic system to provide an end-to-end news workflow for video playout.
- STREAMLINE PRO MOS PLUGIN**
 Streamline Pro MOS plugin provides a simple interface for your video content creation and playout workflows.

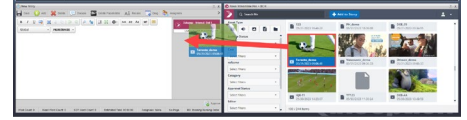


- SUPPORT FOR MOS PRODUCTION WORKFLOWS**
 Integrates with Ross Inception and AP ENPS newsrooms for video content delivery.
- MEDIA PLAYER FOR ASSET PREVIEWS**
 Media player displays previews of the selected video asset.



Media Player
 Displays a preview of the selected video clip.

- **ADD ASSET TO STORIES VIA DRAG AND DROP**
Intuitive drag and drop of assets into Inception Newsroom stories.

**Inception News UI**

Displays a user adding assets from Streamline Pro into an Inception newsroom story.

- **SEARCH TOOL AND FILTER**
Search by unique ID, category, or any of your custom fields. Filtering allows you to ensure that only assets that meet your preferred search criteria will appear in the results.
- **ROSS INTEGRATION**
Streamline Pro offers compatibility with the following Ross Video products including Media I/O, Workflow Suite, and Streamline Xchange. See the [CERTIFICATIONS](#) section below for more details on supported Ross Video products and other vendors.

CERTIFICATIONS

- **OPERATING SYSTEMS**
Windows Server 2019 (Server)
Windows Server 2022 (Server)
Windows 10 (Client)
- **BROWSERS**
For Windows - Chrome 96.0 (Client)
For macOS – Chrome 96.0 and Safari 15.0 (Client)
- **EDITORS**
Adobe Premiere 2022 (v22.3.1 — Build 2) (Windows)
- **SUPPORTED ROSS PRODUCT VERSIONS**
Streamline Xchange v10.0.5
Workflow Suite v8.1.0
Inception v15.7.1
Overdrive v21.3
Streamline Xchange Adobe Panel v10.0.5
- **SUPPORTED THIRD PARTY PRODUCTS**
ENPS v9.3

REQUIREMENTS

- **SSL CERTIFICATE REQUIREMENTS**

Due to browser security constraints Streamline Pro web client requires that you have a secure SSL setup. Administrators can find instructions to configure SSL certificates in the Streamline Pro Installation Guide.

IMPORTANT:

If you do not have the proper SSL certificates installed your web browser may display a certificate authority error message and prevent you from connecting to your web client URL. If you bypass the error, you may experience issues with the search results — including a lack of results appearing, or issues with the displayed Images and Thumbnails.

KNOWN ISSUES

Please refer to the list below for any known issues that were identified at the time of the Streamline Pro release. This list is updated with each release, and resolved issues are removed.

- **OVERDRIVE**
Thumbnails for fulfilled placeholders in OverDrive may occasionally require a refresh to appear. (PRM-2014)

GETTING HELP

- Streamline Pro's Online Help system opens in your default web browser.
- Our 24-hour hotline service provides access to technical expertise around the clock. After-sales service and technical support is provided directly by Ross Video personnel.
- During business hours (Eastern Standard Time), technical support personnel are available by telephone.
- After hours and on weekends, emergency technical support is available. A telephone-answering device will provide the names and phone numbers of technical support and field service personnel who are on call. These people are available to react to any problem and to do whatever is necessary to ensure customer satisfaction. For serious issue which need urgent attention and tracking, please ensure you are given a ticket number and refer to this in future communications.
 - **Technical Support: (+1) 613-652-4886**
 - **After Hours Emergency: (+1) 613-349-0006**