

Ultra 60 9.0.0

- Release Date: June, 2024.



Important: Please review the **End User Software License Agreement** before installing or using this software.

Note: As of version 8.2.0, the upgrade for the Application Software and OS have been combined into a single Upgrade file and procedure. This has resulted in a larger upgrade file and longer upgrade time.

Note: As of version 9.0.0, the location of the Media-Store samples and captures directories have changed. Please check all memories and custom controls that might use these locations.

Feature Enhancements

A number of features have been added, or updated, to this version of software. This section provides a brief introduction to these features, and how to use them.

v9.0.0 Features

Ross Platform Manager Licensing

RPM licenses are issued by the Ross Activation Server under a Customer Product Key. The Product Key is then added to a Ross Platform Manager that multiple switchers can access to request software licenses. Each switcher must request and release licenses from/to the Ross Platform Manager.

RPM licenses can easily be requested or released from a switcher to a pool of licenses on the Ross Platform Manager. This allows you to move licenses between different studios depending on production needs by releasing licenses from one switcher and requesting them by another.

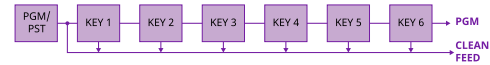
Note: A network connection to the Ross Platform Manager is required to request or release RPM licenses.

Note: Ross Keys licenses are not impacted by RPM licenses. All licenses are cumulative and can be combined on the same switcher.

Tip: A new switcher set register has been added to store RPM license requests.

Advanced Clean Feed

The clean feed has been updated to allow you to select which individual keys are included in the clean feed output. For example, this allows you to include just keys 1, 3 and 6 in the clean feed output.



Clip Player

The clip player offers a single playout channel for compressed MPEG-4 AVC (ITU-T H.264) that can be assigned as a source on any bus in the switcher. Basic transport controls can be performed manually from the **Clip Player** page, using custom controls, or through AMP commands.

TSL 5 Input Expanded

The switcher now supports using the Index and Control bits in the TSL 5 protocol messages to trigger tallies and GPI outputs.

- **Index** — the base address from 0 to 65534.
- **Control** — the control data using bits 0-5. The bit-pairs for tally color are not supported. Only a single bit can be assigned.

Mnemonic Line Break

A line break can now be added to a source name by entering a vertical bar, or pipe, symbol (|) where you want the break. For example, entering CAM|1 would be **CAM** and then **1** on a separate line.

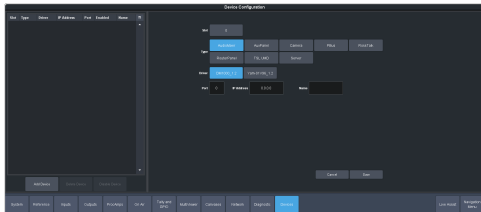
Bus Copy

You can now copy the contents of one bus to another using Dashboard.



Device Naming

You can now apply a name to each device you set up to control from the switcher. These names appear on menus to help identify a particular device.



User Storage

You can now use the internal hard drive of the switcher to store media items, clips, switcher sets, and upgrades. You can use any FTP application to access this storage and move files to and from the switcher.

Note: Some files must be located in specific folders to be accessible by the switcher.

Rosstalk Disable

You can now disable Rosstalk connections to the switcher. The switcher refuses connections on port 7788.



Access Configuration Menu

Configuration items that control how the switcher is accessed remotely, or through user profiles, have been moved to a separate menu.



New Devices Supported

No new device support or commands were added to this version of software.

New Devices

No new devices were added or updated for this version of software.

New/Updated Commands

No new commands were added or updated for this version of software.

Bugs Addressed

The following bugs were addressed in this version of software:

- Fixed crashing issues when front door is removed.
- You can now cue Tria clips in CCs if it is in a folder.
- Fixed knob inversion issue with TD1C.
- Fixed a bug where the panel stops communicating with the frame.
- Switching UMD protocol does not require a reboot.
- Fixed reserved knobs on some TD panels.
- ViewControl NDI® List is now scrollable.
- Allow CC to turn off ME follow.
- Audio fader channels 25-29 now recall correctly.
- Reduced boot times.
- Fixed mask size changes between DVE memory recalls with effects dissolve.
- Fixed key-only MediaWipe transitions.
- Menu buttons and knob display no longer go dark when selecting **Home** after **Save** or **Load**.
- Various other bug fixes and improvements.

Known Issues and Limitations

Keep these notes in mind when upgrading your system to this version of software. Contact Ross Video Technical Support if you have any questions about performing a software upgrade.

External Devices

The following issues have been identified when working with external devices:

- **Disable Device** — The device disable feature in DashBoard is not available for audio mixer and some robotic cameras at this time.

Operational Notes

The following issues have been identified when working with the switcher:

- **Corrupt USB** — If you remove the USB drive while the switcher is writing to it, the USB could become corrupted and will need to be re-formatted.
- **External Re-Entry Video Errors** — A video timing error can occur when a video output of the switcher is routed back into the switcher using an input BNC. If video timing errors do occur, assigning a frame synchronizer to the input BNC will remove the timing errors.
- **Stills with same Name** — You cannot have two or more Media-Store files with the same name but different file extensions in the same folder. The switcher treats capital and lowercase letters as the same.
- **Transitions with Show Alpha** — If the show alpha feature is on, only cut transition are possible on the ME. The switcher will perform a cut at the end of the transition duration instead of the selected transition type.
- **720p in BT.2020 SDR** — The combination of 720p and the BT.2020 color gamut in SDR is not documented in the applicable standards and may not be supported by other downstream devices.
- **Sets Not Backwards Compatible** — If you save a set in one version, you may not be able to load the set in an older version of switcher software.
- **Decimal Accuracy** — DashBoard and the 3-knob menu show numerical values slightly differently. DashBoard shows values accurate

to 2 decimal places and the 3-knob menu shows values rounded to 1 decimal place.

- **Jumbo Frames Not Supported** — Ethernet frames with more than 1,500 bytes of payload (Jumbo Frames) are not supported at this time. If your device has an option to send jumbo frames, it must be turned off to properly communicate with the switcher.
- **MediaWipe and DVE Wipe** — If you switch back and forth between a DVE transition and a MediaWipe DVE transition, the DVE transition may only perform a cut at the end of the transition duration. Select a different DVE transition pattern and then switch back to the pattern you want to fix the issue.
- **Disable UDP TSL Device** — If you disable communications to a TSL device that is using the UDP transport protocol, the switcher will continue to send data to it.
- **Fail to Recover From Momentary Loss of Power** — If the switcher experiences a momentary loss of power (<5 seconds) it may not be able to power back up on its own. Turn the power switch off, wait 10 seconds, and then turn it on again to force the switcher to restart properly.
- **Network Port LEDs** — The Link/Activity indicator on the network port does not light up at this time.
- **Mixed Power Supplies** — If you mix power supplies from different manufacturers they will not load-share. Both power supplies will report as Good and provide full redundancy for each other, but only one will provide 100% of the power to the system at any one time. If the power supply that is providing 100% of the power fails or must be removed, the remaining power supply will take over without interruption.
- **SoftPanel Restart** — Navigating to the **Diagnostic** menus may cause any SoftPanel connected to the same frame to restart.
- **ABU Support for 24Hz** — The ABU-12G 5.0.0 and ABU 4.5.1 software does not support 24Hz video formats at this time.

Ultra 60

- **Slow First Switcher Mode Change** — When the switcher first boots up in version 8.1 there is a selection for **Cached Switcher Mode**. This **Cached Switcher Mode** has not yet been properly cached. You must load a separate **Switcher Mode** before you will be able to select a **Cached Switcher Mode** and properly load it into cache. The switcher mode caching will operate normally after the first new mode is loaded.

Software Upgrade

The switcher software and OS are upgraded from DashBoard either by dragging and dropping the software onto the Upgrade page, or by saving the upgrade file to the USB drive inserted in the frame.

Depending on the version of software you are upgrading from, your menus may be arranged or appear differently.

Note: Contact Ross Video Technical Support for information on performing an OS Recovery upgrade.

Software Compatibility

Before installing any software, review the following version compatibility information.

Note: Compatibility, unless otherwise indicated, shows the combination of software versions that were tested together. Other combinations may not have all the features introduced with the most recent version of software.

Table 1: Version Compatibility

Software	Version	To Verify
Ultra 60	9.0.0	The current version is shown on the Status page in DashBoard for the Ultra 60 node.
RAVE Loader	5.0.0.19188	The current version of the application that is used to upgrade the 1RU Audio Breakout Unit.
1RU Audio Breakout Unit	4.5.1.326	The current version of the 1RU Audio Breakout Unit is shown on the menu display of the unit.

Software	Version	To Verify
1RU Audio Breakout Unit-12G	5.1.2.446	The current version of the 1RU Audio Breakout Unit is shown on the menu display of the unit.
DashBoard	9.10.0	Refer to the documentation what came with DashBoard for information on getting the current version number.
Carbonite Black Panel	1.5.530	A software mismatch message is shown on the control panel if you need to upgrade the software on the control panel.
TouchDrive Panel	3.1.0	The current version is shown on the Status page in DashBoard for the TouchDrive node.



Important: Depending on the components that need to be upgraded, not all of the upgrade procedures need to be completed.

To Upgrade the Switcher Software

Use DashBoard to upload the upgrade file to the switcher.

Note: Save your switcher setup information to a set on a separate USB drive before upgrading. This switcher set can be used as a backup in case there is a critical error during the upgrade.

Tip: Switcher sets are not backwards compatible. Keep an archive copy of your sets in case you want to downgrade to the previous software version.



Important: Do NOT turn the switcher power off during the upgrade. Doing so may corrupt the switcher software or damage the switcher components.



Important: Only ONE USB should be installed in the frame at any one time. USB drives are numbered according to the order they are discovered by the operating system and not the USB port they are installed in.

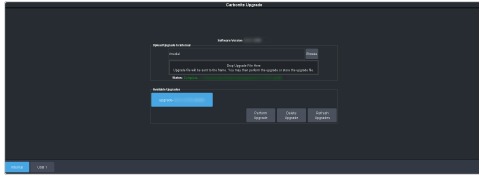
Tip: For best performance it is recommended that the USB drive be formatted using the exFAT file system.

Tip: The switcher copies the system logs to the internal drive before the upgrade. This information can be useful for Technical Support if there is an issue with the upgrade.

ROSS

Ultra60

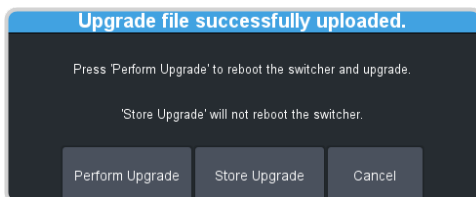
1. Click **Navigation Menu > Configuration > System > Upgrade.**



2. Locate the software upgrade file (upgrade-withOS-x.x.x.xxx.ultra60) for the switcher.

Tip: You can store the upgrade file locally on the switcher without upgrading. Before uploading the file you must select either **USB X** or **Internal** as the location that the file is uploaded to.

3. Drag and drop the upgrade file into the **Drag and Drop Upgrade** area on DashBoard. The file is uploaded and you are asked what you would like to do with the file.



- **Perform Upgrade** — perform the upgrade with the file that was just uploaded.
- **Store Upgrade** — store the file locally in the upgrade folder.
- **Cancel** — cancel the process and delete the upgrade file from the switcher.

Tip: You can also upgrade from the USB or Internal storage. Click **USB X** or **Internal** and all upgrade files located on the storage device are listed. Click the file you want to use and click **Perform Upgrade**. Refer to [for information on transferring upgrade files to the internal storage.](#)

Tip: You can also upgrade by clicking **Browse**, locating the upgrade file, and then clicking **Upload File**.

Tip: You can delete an upgrade file by selecting the file and clicking **Delete Upgrade**.

4. Click **OK** to confirm the upgrade.

5. Wait for the DashBoard pages to come back up. This may take a few minutes.

Tip: The glow color on the front panel of the frame will change during the upgrade and a message on the display will show the progress of upgrading the FPGAs (if required).

Upgrade Issues

If there is a problem during the upgrade procedure, an error message is shown on the display of the control panel.

Table 2: Upgrade Error Messages

Error Message	Description
USB not inserted	The USB drive was removed or unmounted during the upgrade. Re-insert the same USB drive back into the frame.
USB < 1G free	The USB drive requires at least 1GB of free space for temporary files during the upgrade. Copy the upgrade file to a larger USB drive and start the upgrade again.
USB failure	There has been a critical failure with the USB drive. A forced upgrade must be performed and switcher setting will have to be restored from the saved setup. Contact Ross Technical Support for support with this error.
USB file failure	There has been a critical failure with the files on the USB drive. A forced upgrade must be performed and switcher setting will have to be restored from the saved setup. Contact Ross Technical Support for support with this error.

To Upgrade the Carbonite Black Panel

After the frame has been upgraded and reconnected to the panel, a message may be displayed indicating that a software mismatch. You only need to upgrade the panel or CarboNET if the mismatch message is displayed.

Note: It is important to upgrade all devices connected to a frame to the same version. This includes in a MultiPanel configuration.

1. In DashBoard, double-click on the **CarbonitePanel** node for the Carbonite

Ultra⁶⁰

Black panel or CarboNET that you want to upgrade.

2. Click **Upload > Browse**.
3. Locate the CarbonitePanel-v#_#_###.bin upgrade file and click **Open**.

*Tip: If you have multiple devices to upgrade, click **Next** and select all the devices that you want to upgrade.*

4. Click **Finish**.
DashBoard uploads the upgrade file to the device and performs the upgrade.
5. Click **Reboot > OK**.

ROSS