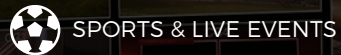
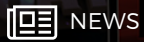


# GRAPHITE

ALL-IN-ONE PRODUCTION SYSTEM



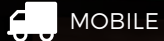
SPORTS & LIVE EVENTS



NEWS



VIRTUAL STUDIO



MOBILE



ESPORTS



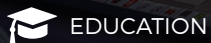
GOVERNMENT



CORPORATE



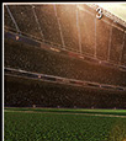
HOUSE OF WORSHIP



EDUCATION



IP & SDP WORKFLOWS



Graphite provides a full video and audio mixing, graphics and clip playback solution within a single 4RU frame. Dedicated AV mixing engine hardware ensure rock-solid reliability during your productions.

## Features/Benefits

- Switch with confidence with an on-board Carbonite, the mid-sized production switcher powerhouse.
- Create true 3D objects and animations, with near limitless layering on a single channel of XPression Graphite.
- Record and playout video clips with the integrated dual-channel XPression Clips server.
- Handle demanding live audio with the 48-channel RAVE audio mixer.

# **HiGH** **IMPACT** **EFFICIENCY**

REAL SWITCHER. REAL GRAPHICS. REAL AUDIO.

ROCK-SOLID RELIABILITY WITH DEDICATED PCIE HARDWARE



## **GRAPHITE V2.2**

### **AUDIO EQUALIZER (EQ)**

Equalize the sound of your microphones and overcome the technical/environmental issues that create inconsistent audio. EQ is also a great creative tool for setting the audio mood of your show.

### **SDI-EMBEDDED CHANNEL PAIR SELECTION**

Select any of the 8 channel pairs embedded on SDI inputs and assign them to a fader. Access and control over embedded-audio is great for facilities with distributed audio.

### **AUDIO INPUT & OUTPUT CONFIGURATION**

Link faders to different video inputs for Audio-Follow-Video (AFV) tracking and assign any fader or custom mix to the embedded channels on SDI outputs.

HIGHLIGHTS

