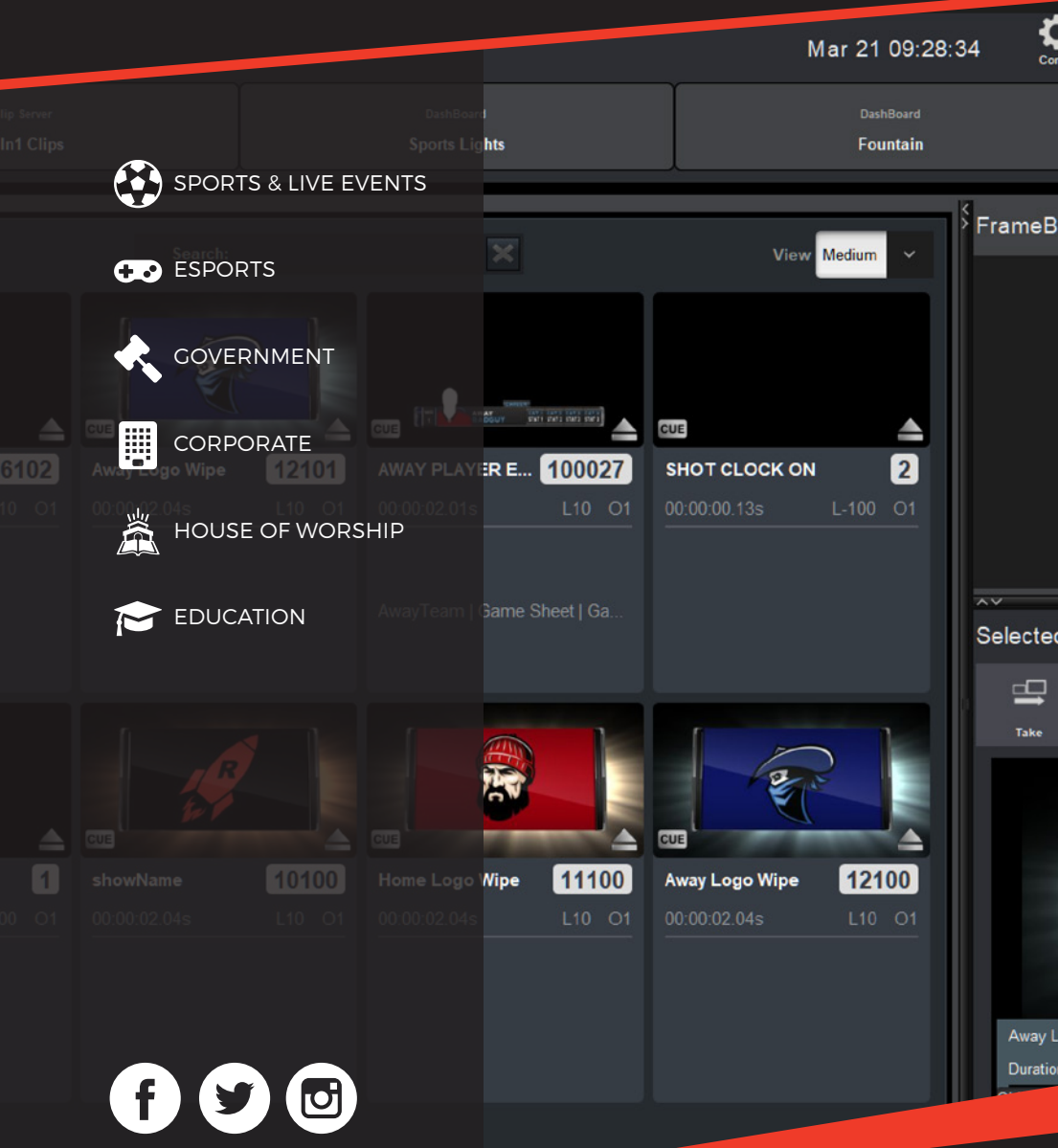




EVENT CONTROL SYSTEM



PowerPlay is an Event Control system that allows users to centralize device control to a single server and simplify playout and scheduling of production and environmental devices for any live event.

Features/Benefits

- Schedule and control un-manned events that occur before, during, and after your production.
- Fully automate the playback of your events using a time-of-day schedule.
- Control everything by tapping into Ross's massive device control library.
- Utilize PowerPlay for any type of live event – sports, corporate, faith-based, broadcast, and more.



HiGH **IMPACT** **EFFICIENCY**

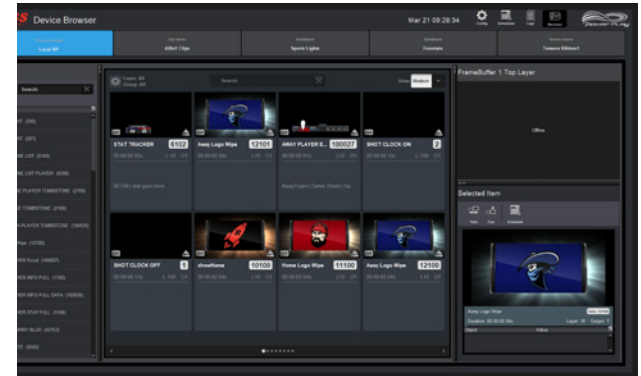
ALL-IN-ONE EVENT SCHEDULING AND CONTROL

FULLY AUTOMATED, UN-MANNED EVENT PLAYBACK

HIGHLIGHTS

DEVICE MANAGER

With PowerPlay's Device Manager, you can easily define, manage, and configure all your controlled devices.



SCHEDULER

The Scheduler feature triggers events at specific times, and can designate them as one-time or recurring events.

ROSS INTEGRATION

PowerPlay can be used to trigger and schedule events from other Ross products including XPression, Abekas Playout Servers, and custom DashBoard panels.

