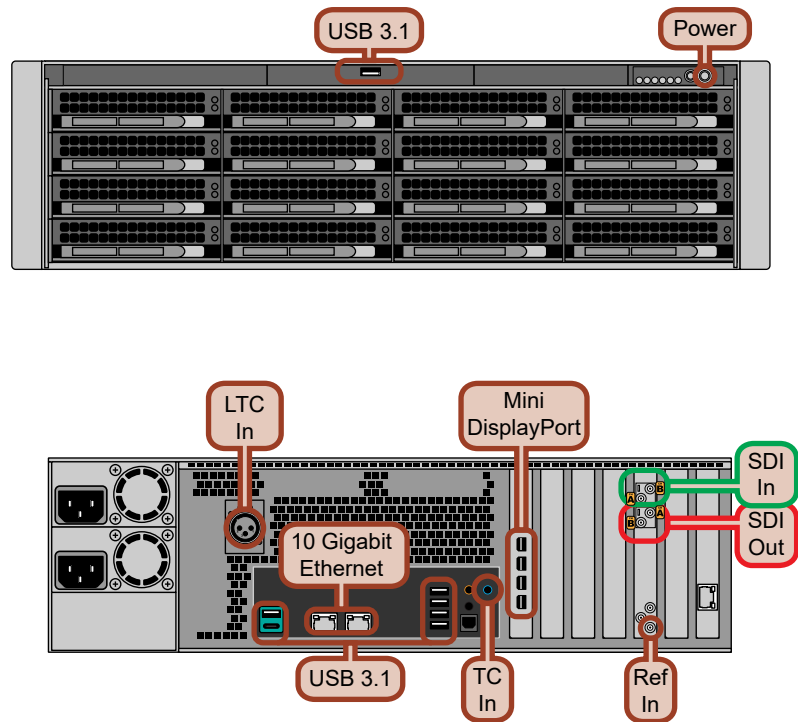




**Caution:** Before you set up and operate your server, see the "Important Safety Instructions" in your User manual.

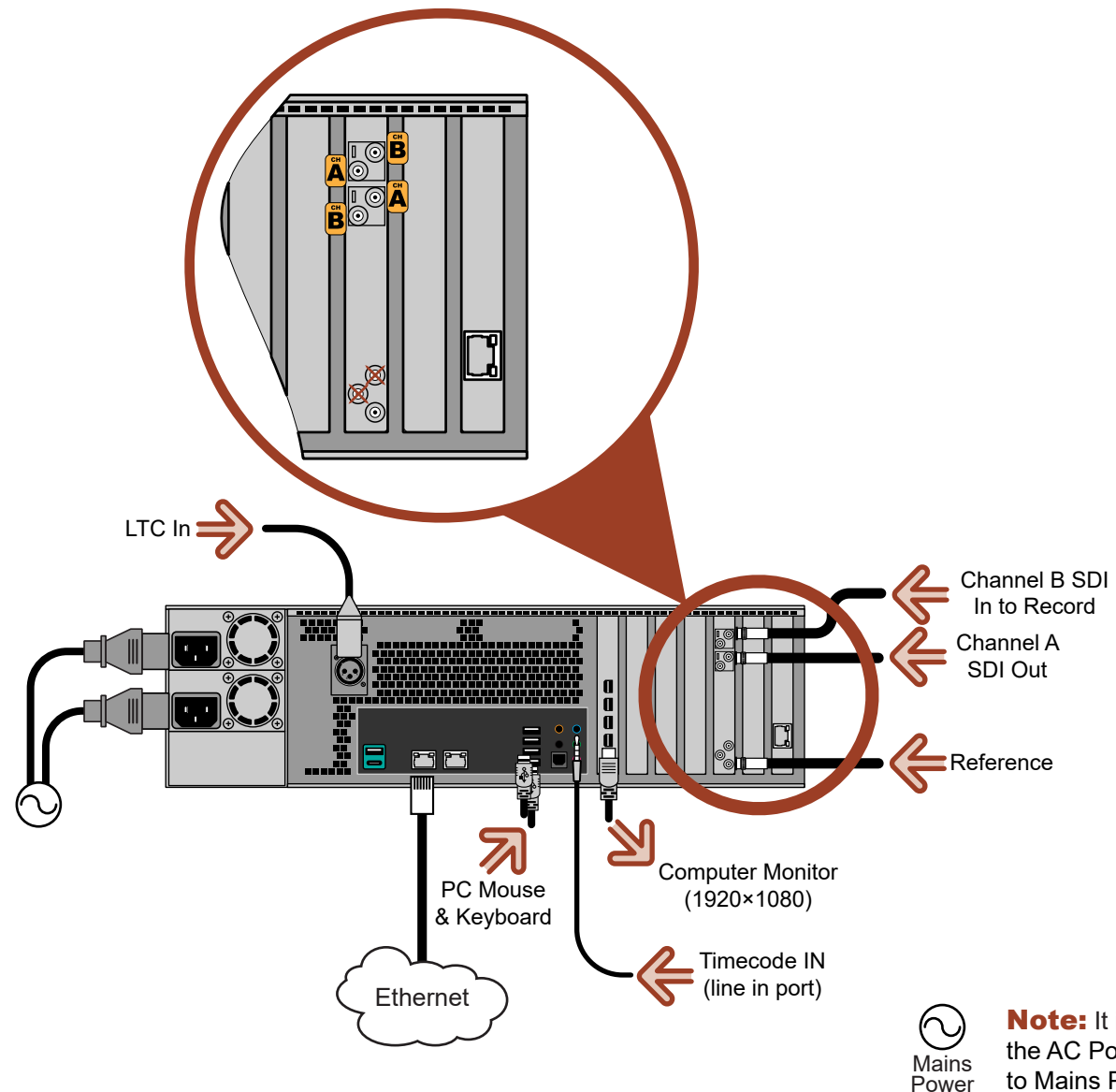
## Ports and Connectors



### Notes:

- If you are recording from, or outputting to, an external device you must have all devices connected to the same reference signal to ensure proper audio/video synchronization.
- Remote control is supported over ethernet only.
- The TC In (LINE IN) audio port is used for TC Chase.
- HD-BNC to standard BNC adapter cables are provided.

## Power, Video, Audio and Control Cabling



**Note:** It is recommended that you always connect the AC Power Adapter to the device before connecting to Mains Power.

## Specifications

SDI Video Formats	
1080p 50/59.94Hz	
UHDTV1 50/59.94Hz	

Default Passwords	
Windows Administrator	Abekas multiflex

Input Voltages	
100 to 240V~	
3 to 1.5A	
60 to 50Hz	

Operating Environment	
Temperature:	20 - 35°C (68 - 95°F)
Humidity:	20 - 80%

Video/Audio Input Specifications	
Video Inputs	SMPTE ST-2036-1, UTI-R BT.2020 10-bit @ 20Gb/s
Embedded Audio	16 Tracks, 48kHz @ 24-bit
Reference Input	Tri-Level HD or Bi-level SD; Terminating

Video/Audio Output Specifications	
Video Outputs	SMPTE ST-2036-1, UTI-R BT.2020 10-bit @ 20Gb/s
Embedded Audio	16 Tracks, 48kHz @ 24-bit

