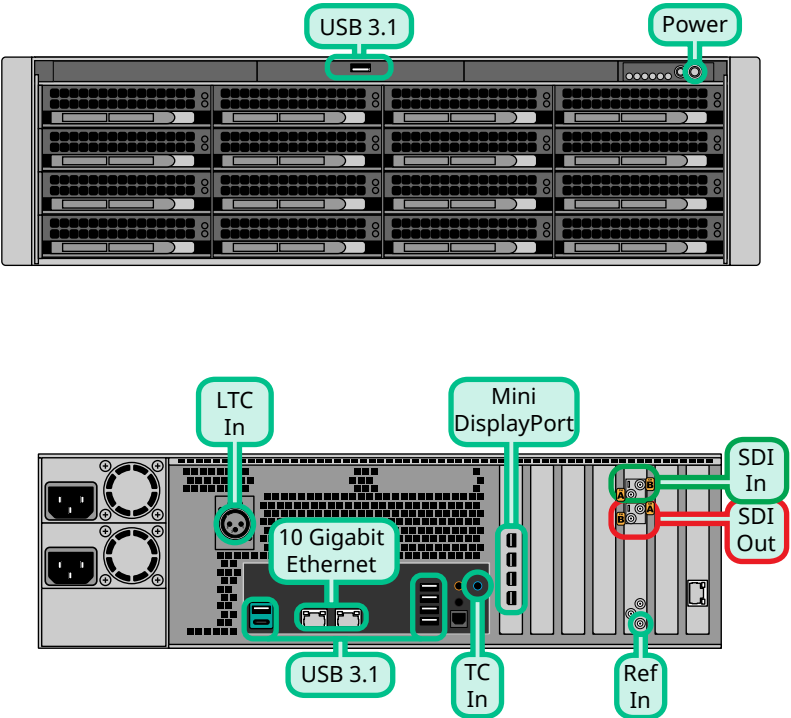




Caution: Before you set up and operate your server, see the “Important Safety Instructions” in your User manual.

Installation and Cabling

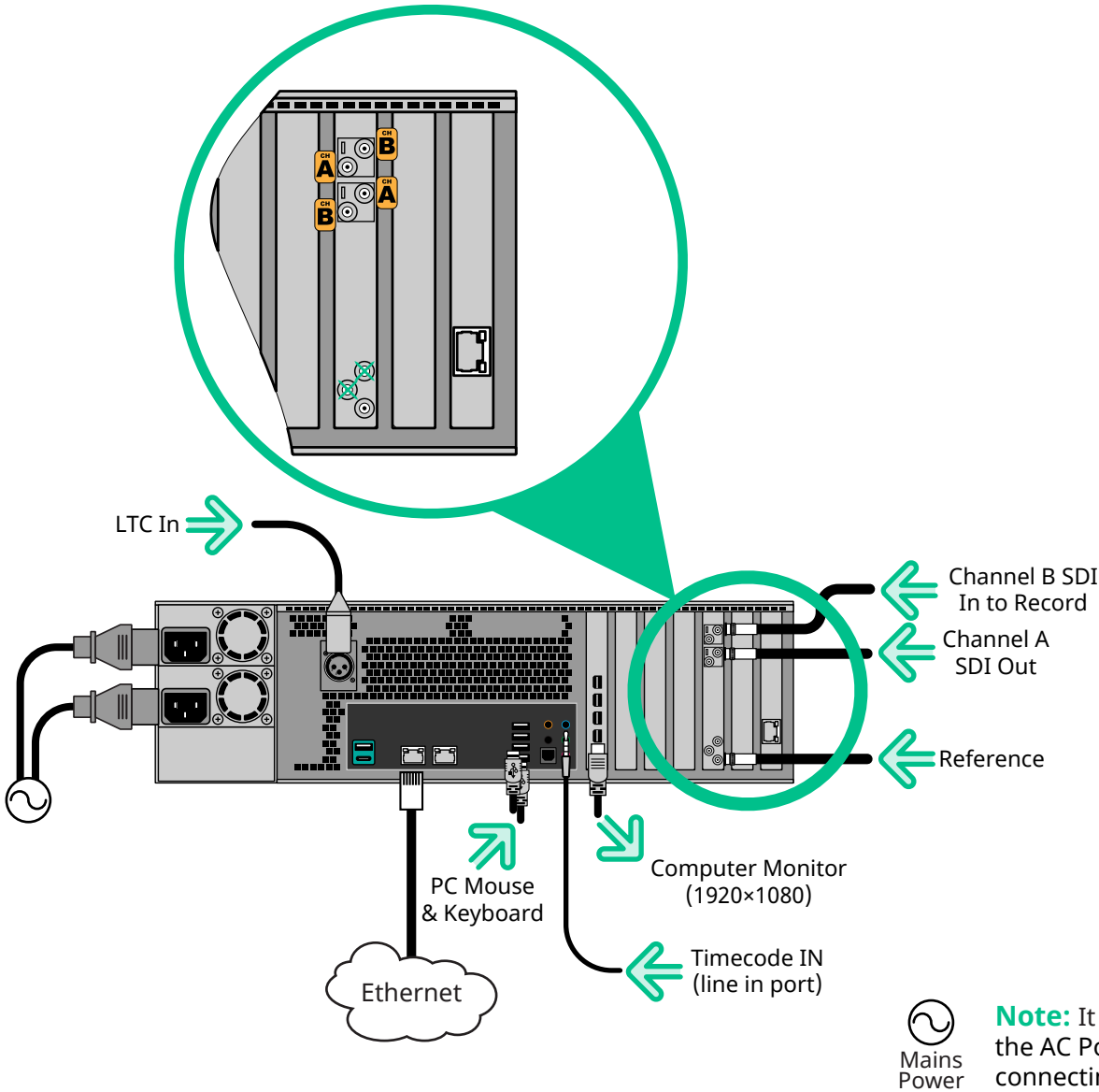
Ports and Connectors



Notes:

- If you are recording from, or playing into, an external device you must have all devices connected to the same reference signal to ensure proper audio/video synchronization.
- Remote control is supported over ethernet only.
- The TC In (LINE IN) audio port is used for TC Chase.
- HD-BNC to standard BNC adapter cables are provided.

Power, Video, Audio and Control Cabling



Note: It is recommended that you always connect the AC Power Adapter to the device before connecting to Mains Power.

Specifications

SDI Video Formats
1080p 50/59.94Hz
UHDTV1 50/59.94Hz

Default Passwords	
Windows	Abekas
Administrator	multiflex

Input Voltages
100 to 240V~
3 to 1.5A
60 to 50Hz

Operating Environment
Temperature: 20 - 35°C (68 - 95°F)
Humidity: 20 - 80%

Video/Audio Input Specifications	
Video Inputs	SMPTE ST-2036-1, UTI-R BT.2020 10-bit @ 20Gb/s
Embedded Audio	16 Tracks, 48kHz @ 24-bit
Reference Input	Tri-Level HD or Bi-level SD; Terminating

Video/Audio Output Specifications	
Video Outputs	SMPTE ST-2036-1, UTI-R BT.2020 10-bit @ 20Gb/s
Embedded Audio	16 Tracks, 48kHz @ 24-bit

