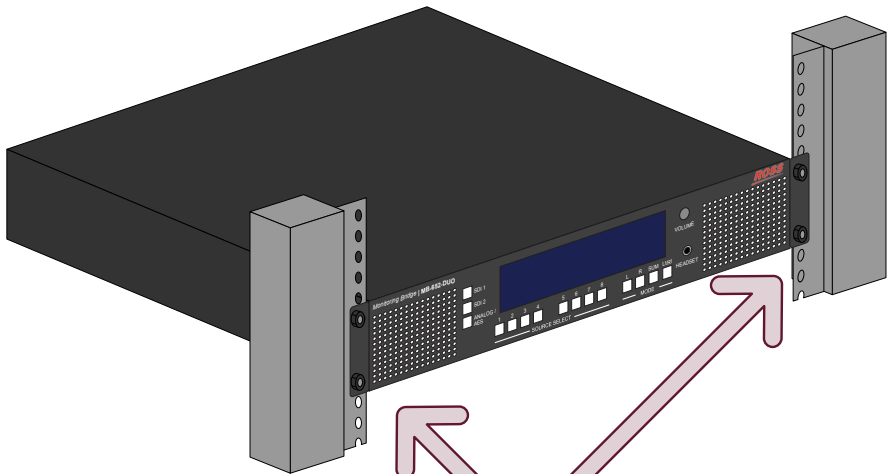


MB-652-DUO Installation and Cabling



Before you set up and operate your MB-652-DUO, refer to the "Important Regulatory and Safety Notices" document that was included with your MB-652-DUO. It is also recommended to refer to the MB-652-DUO User Manual which is available for download from our website.

Rack Mounting

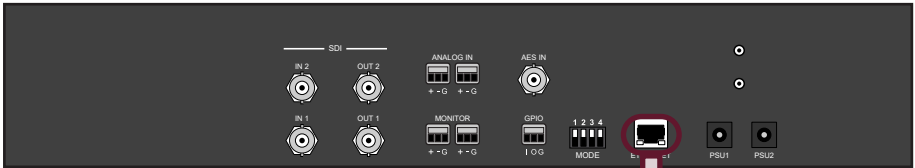


4 x Rack Screws

Keep the following in mind when installing your MB-652-DUO:

- Install the MB-652-DUO for maximum stability and adequate ventilation
- Ensure the MB-652-DUO is installed in free air space where the ambient temperature is monitored and controlled to not exceed 40°C (104°F) at the frame front door airflow intake
- Ensure that adequate space exists in front and behind the MB-652-DUO and on both sides of the frame for airflow exhaust
- The location of the MB-652-DUO should be accessible, dry, and dust-free

Ethernet Cabling



Ethernet

Note: Contact your IT Department before connecting to your facility network to ensure that there are no conflicts.

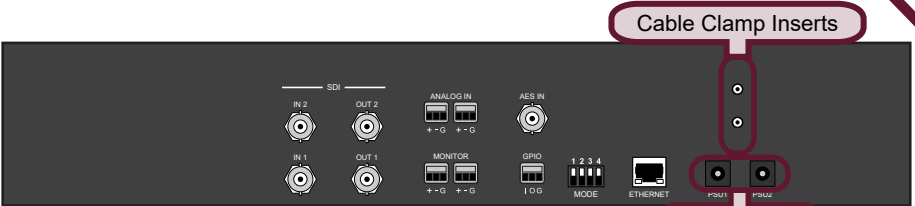
Note: Configure the DIP Switches as required to establish initial communications between the MB-652-DUO and DashBoard. The figure below shows all DIP Switches in the default UP position.



SW1 and SW2 - Setting the IP Address

SW1 Position	SW2 Position	Description
UP	UP	The IP configuration is set DashBoard. DHCP Mode is assumed until the user changes the settings in DashBoard. (default)
UP	DOWN	The MB-651 network settings are automatically assigned (DHCP Mode).
DOWN	UP	The MB-651 IP Address is set to 192.168.2.1 and the Subnet Mask is set to 255.255.255.0.
DOWN	DOWN	The MB-651 IP Address is set to 10.1.2.1 and the Subnet Mask is set to 255.255.255.0.

Power Cabling



Power

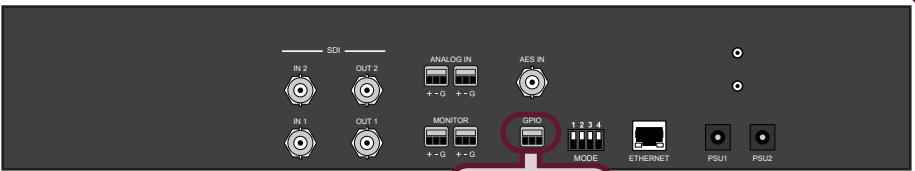
Note: The MB-652-DUO powers on automatically when the power supply is plugged in.

Video and Audio Cabling



Note: For a -20dBFS input, there will be a +4dBu output.

GPIO Cabling



GPIO Port

Note: Shorting the I pin to the G pin will mute the front speakers, and the audio level on the rear monitor ports will be controlled by the front volume knob.

Specifications

SDI Inputs and Outputs	
Number of Inputs	2
Number of Outputs	2
Connector Type	75ohm BNC
Signal Level	800mV nominal
Cable Equalization	SD: 200m @ 270Mbps HD: 120m @ 1.5Gbps 3G: 80m @ 3Gbps

AES Input	
Number of Inputs	1
Connector Type	BNC
Impedance	75ohm
Level	1Vp-p typical
Sampling Rate	32kHz to 96kHz

Analog Inputs	
Number of Inputs	2
Connector Type	3-pin terminal blocks
Max. Input Level	+24dBu, +4 typical
Frequency Response	+/-0.1dB 20Hz to 20kHz
THD	0.005% 20Hz to 20kHz

Analog Audio Monitor Output	
Number of Outputs	2
Connector Type	3-pin terminal blocks
Reference Level	-20dBFS = +4dBu
Frequency Response	+/-0.5dB 20Hz-20kHz
Distortion	<0.01%THD+N (20Hz-20kHz)

Physical Specifications	
Clearance	Side: 2.00" (50mm) Rear: 3.00" (75mm)
Height	3.5" (8.89cm)
Width	19.00" (48.26cm)
Depth	8.5" (21.59cm)
Temperature	maximum: 40°C

Power	
Consumption	90-240VAC 50/60Hz 90W

MB-652-DUO Configuration

Using DashBoard

The DashBoard client software enables you to monitor and configure the MB-652-DUO from a computer connected to your facility network. There are three interfaces in DashBoard that display as nodes in the Tree View: Network Connect, the MB-652-DUO interface, and the MB-652-DUO interface.

To launch DashBoard

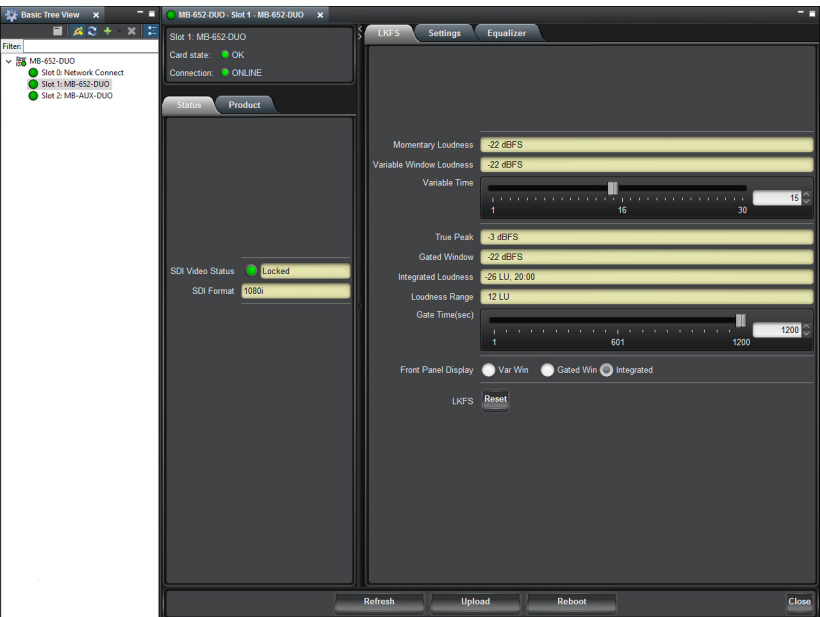
1. Ensure the MB-652-DUO is connected to the same network as your DashBoard client computer.
2. Double-click the DashBoard icon on your computer desktop.
3. Power on the MB-652-DUO.
4. Wait approximately 30 seconds while the MB-652-DUO establishes network communications.
5. Verify the MB-652-DUO displays in the Tree View of DashBoard.

If the MB-652-DUO fails to display in DashBoard

1. Verify the ethernet cables are properly connected.
2. Check the link/activity LEDs found on the chassis Ethernet port.
3. Ensure the network settings are the factory default values.

To access the MB-652-DUO interfaces

1. From the Tree View, expand the node for the MB-652.
2. Select the Slot 0 node to display the Network Connect interface in the right-half of the DashBoard window.
3. Select the Slot 1 node to display the audio interface in the right-half of the DashBoard window.
4. Select the Slot 2 node to display the AUX inputs interface in the right-half of the DashBoard window.



Network Configuration

Once communication is established with the MB-652-DUO, the network settings can be adjusted using the following procedure. Note that the steps are optional, you may perform as many, or as few, as needed.

To change the MB-652-DUO network settings

1. From the Tree View, expand the node for the MB-652-DUO.
2. Select the **Network Connect** node.
3. Use the **Addressing Mode** options to change between Static and DHCP addressing.
4. Use the **IP Address** field to specify the address of the MB-652-DUO.
5. Use the **Subnet Mask** field to specify the subnet mask for your LAN.
6. Use the **Default Gateway** field to specify the IP Address for connection outside the subnet.
7. Click **Apply** to save and apply the new settings.

Setting the Master Password

Right-clicking an MB-652-DUO node in the Tree View of DashBoard provides the option to Lock/Unlock Access. Locking an MB-652-DUO requires the user to enter a Master Password before gaining access to the MB-652-DUO. Refer to the *MB-652-DUO User Manual* for details on setting the **SW3** DIP Switch.

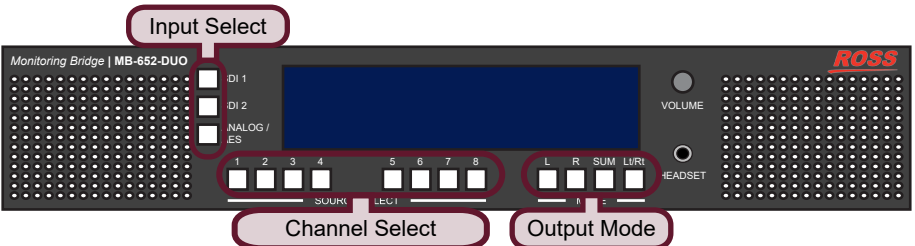
To set a new Master Password for the MB-652-DUO

1. From the Tree View, right-click the MB-652-DUO node.
2. Select **Lock/Unlock Access**.
3. Select the box for the MB-652-DUO you wish to set a new password for.
4. Type the current password in the **Old Password** field.
5. Type the new password in the **New Password** field.
6. Click **OK** to apply the new password.

Audio Setup via Panel

Using the Control Panel

Selecting the audio channels you want to monitor is provided by the push-buttons located below the audio meters, allowing you to select which stereo pair to route to the speakers.



Use the four Mode push-buttons to specify the output mode as follows:

- **L** — routes the left channel of the selected source to the speakers
- **R** — routes the right channel of the selected source to the speakers
- **SUM** — allows any of the channels to be summed together to monitor more than one source at a time
- **Lt/Rt** — provides an Lt/Rt downmix of your 5.1 surround audio

Audio Setup via DashBoard

You can also use the interface in DashBoard to specify the audio channel to monitor.

To setup the audio monitoring via DashBoard

1. From the Tree View, expand the node for the MB-652-DUO.
2. Select the node for your MB-652-DUO.
3. Use the **Input Source** field to specify the audio channel to route to the speakers.
4. Use the **Volume** field to set the volume level of the speakers.



Having a problem? Call our free, 24-hour technical support hotline to speak with a live product specialist located right here in our facility.

Tel: (+1) 613 • 652 • 4886

Email: techsupport@rossvideo.com

ROSS