



OGX-FR Series User Guide

Thank You for Choosing Ross

You've made a great choice. We expect you will be very happy with your purchase of Ross Technology.

Our mission is to:

1. Provide a Superior Customer Experience
 - offer the best product quality and support
2. Make Cool Practical Technology
 - develop great products that customers love

Ross has become well known for the Ross Video Code of Ethics. It guides our interactions and empowers our employees. I hope you enjoy reading it below.

If anything at all with your Ross experience does not live up to your expectations be sure to reach out to us at solutions@rossvideo.com.



David Ross
CEO, Ross Video
dross@rossvideo.com

Ross Video Code of Ethics

Any company is the sum total of the people that make things happen. At Ross, our employees are a special group. Our employees truly care about doing a great job and delivering a high quality customer experience every day. This code of ethics hangs on the wall of all Ross Video locations to guide our behavior:

1. We will always act in our customers' best interest.
2. We will do our best to understand our customers' requirements.
3. We will not ship crap.
4. We will be great to work with.
5. We will do something extra for our customers, as an apology, when something big goes wrong and it's our fault.
6. We will keep our promises.
7. We will treat the competition with respect.
8. We will cooperate with and help other friendly companies.
9. We will go above and beyond in times of crisis. *If there's no one to authorize the required action in times of company or customer crisis - do what you know in your heart is right. (You may rent helicopters if necessary.)*

OGX-FR Series · User Guide

- Ross Part Number: **8322DR-204-03**
- Release Date: May 28, 2024.

The information contained in this Guide is subject to change without notice or obligation.

Copyright

©2024 Ross Video Limited, Ross®, and any related marks are trademarks or registered trademarks of Ross Video Limited. All other trademarks are the property of their respective companies. PATENTS ISSUED and PENDING. All rights reserved. No part of this publication may be reproduced, stored in a retrieval system, or transmitted in any form or by any means, mechanical, photocopying, recording or otherwise, without the prior written permission of Ross Video. While every precaution has been taken in the preparation of this document, Ross Video assumes no responsibility for errors or omissions. Neither is any liability assumed for damages resulting from the use of the information contained herein.

Patents

Patent numbers US 7,034,886; US 7,508,455; US 7,602,446; US 7,802,802 B2; US 7,834,886; US 7,914,332; US 8,307,284; US 8,407,374 B2; US 8,499,019 B2; US 8,519,949 B2; US 8,743,292 B2; GB 2,419,119 B; GB 2,447,380 B; and other patents pending.

Notice

The material in this manual is furnished for informational use only. It is subject to change without notice and should not be construed as commitment by Ross Video Limited. Ross Video Limited assumes no responsibility or liability for errors or inaccuracies that may appear in this manual.

Safety Notices

Refer to the “**Important Regulatory and Safety Notices**” document that accompanied your product.

Statement of Compliance

This product has been determined to be compliant with the applicable standards, regulations, and directives for the countries where the product is marketed.

Compliance documentation, such as certification or Declaration of Compliance for the product is available upon request by contacting techsupport@rossvideo.com. Please include the product; model number identifiers and serial number and country that compliance information is needed in request.

EMC Notices

US FCC Part 15

This equipment has been tested and found to comply with the limits for a class A Digital device, pursuant to part 15 of the FCC Rules.

These limits are designed to provide reasonable protection against harmful interference when the equipment is operated in a Commercial environment. This equipment generates, uses, and can radiate radio frequency energy and, if not installed and used in accordance with the instruction manual, may cause harmful interference to radio communications. Operation of this equipment in a residential area is likely to cause harmful interference in which case the user will be required to correct the interference at his own expense.



Notice — *Changes or modifications to this equipment not expressly approved by Ross Video Ltd. could void the user's authority to operate this equipment.*

Canada

This Class "A" digital apparatus complies with Canadian ICES-003 and part 15 of the FCC Rules.

Cet appareil numerique de la classe "A" est conforme a la norme NMB-003 du Canada.

European Union

This equipment is in compliance with the essential requirements and other relevant provisions established under regulation (EC) No 765/2008 and Decision No 768/2008/EC referred to as the "New Legislative Framework".



Warning — *This equipment is compliant with Class A of CISPR 32. In a residential environment this equipment may cause radio interference.*

Australia/New Zealand

This equipment is in compliance with the provisions established under the Radiocommunications Act 1992 and Radiocommunications Labeling (Electromagnetic Compatibility) Notice 2008.

Korea

This equipment is in compliance with the provisions established under the Radio Waves Act.

Class A equipment (Broadcasting and communications service for business use)

This device is a business-use (Class A) EMC-compliant device. The seller and user are advised to be aware of this fact. This device is intended for use in areas outside home.

Type of Equipment	User's Guide
A급 기기 (업무용 방송통신기자재)	이 기기는 업무용(A급) 전자파적합기기로서 판매자 또는 사용자는 이 점을 주의하시기 바라며, 가정외의 지역에서 사용하는 것을 목적으로 합니다.
Class A Equipment (Industrial Broadcasting & Communication Equipment)	This equipment is Industrial (Class A) electromagnetic wave suitability equipment and seller or user should take notice of it, and this equipment is to be used in the places except for home.

International

This equipment has been tested under the requirements of CISPR 22:2008 or CISPR 32:2015 and found to comply with the limits for a Class A Digital device.



Notice — *This is a Class A product. In domestic environments, this product may cause radio interference, in which case the user may have to take adequate measures.*

Maintenance/User Serviceable Parts

Routine maintenance to this openGear product is not required. This product contains no user serviceable parts. If the module does not appear to be working properly, please contact Technical Support using the numbers listed under the "**Contact Us**" section of this manual. All openGear products are covered by a generous 5-year warranty and will be repaired without charge for materials or labor within this period. See the "**Warranty and Repair Policy**" section in this manual for details.

Environmental Information

The equipment may contain hazardous substances that could impact health and the environment.

To avoid the potential release of those substances into the environment and to diminish the need for the extraction of natural resources, Ross Video encourages you to use the appropriate take-back systems. These systems will reuse or recycle most of the materials from your end-of-life equipment in an environmentally friendly and health conscious manner.

The crossed-out wheeled bin symbol invites you to use these systems.



If you need more information on the collection, reuse, and recycling systems, please contact your local or regional waste administration. You can also contact Ross Video for more information on the environmental performances of our products.

Company Address



Ross Video Limited

8 John Street
Iroquois, Ontario
Canada, K0E 1K0

Ross Video Incorporated

P.O. Box 880
Ogdensburg, New York
USA 13669-0880

General Business Office: (+1) 613 • 652 • 4886

Fax: (+1) 613 • 652 • 4425

Technical Support: (+1) 613 • 652 • 4886

After Hours Emergency: (+1) 613 • 349 • 0006

E-mail (Technical Support): techsupport@rossvideo.com

E-mail (General Information): solutions@rossvideo.com

Website: <http://www.rossvideo.com>

Contents

Introduction	9
Related Publications	9
Documentation Conventions	9
Interface Elements	9
User Entered Text	9
Referenced Guides	10
Menu Sequences	10
Important Instructions	10
Contacting Technical Support	10
Before You Begin	11
Features	11
Workflow	11
Hardware Overview	13
Front Panel Overview	13
OGX-FR Interior	14
Rear Panel Overview	15
openGear Rear Modules	15
Supports DFR-8321 and OG3-FR Rear Modules	15
Identifying an OGX-FR Rear Module	16
Rear Module Types	16
Physical Installation	17
Before You Begin	17
Static Discharge	17
Ventilation and Cooling	17
Ventilation	17
Cooling Fan Module	18
Airflow Requirements	18
Installation Requirements	18
Installing the Rear Support Bars and Brackets	18
Installing the FSB-OGX	18
Connecting to a Power Supply	20
Power Supply Connectors (PSU1, PSU2)	20
Power Cable Connection	20
Ethernet Cabling	23
Cabling the Ethernet Port on the OGX-FR Frame	23
Required Pinouts	23
Connecting to a Network	23
Reference Cabling	25
GFC-8322 Overview	25
Connecting a Video Reference Source	25
Connecting to a Reference Source	25
Looping the Reference Signals	26
Troubleshooting	26

Using DashBoard	27
Overview	27
Launching DashBoard	27
Using the Automatic Detection Feature	27
Manually Adding OGX-FR Frames to DashBoard	27
Re-naming the OGX-FR Frame in the Tree View	28
Removing an OGX-FR Frame from the Tree View in DashBoard	29
Auto-Discovery	30
Using DashBoard to Access openGear Cards in the OGX-FR Frame	30
Maintenance	33
Installing a Frame Power Supply	33
Fan Filter Maintenance	33
Cleaning the Frame Air Filter	33
Replacing the Frame Air Filter	34
Replacing the Cooling Fan Module	35
Replacing the OGX-FR Door	35
Technical Specifications	37
Dimensions	37
PS-OGX	37
Card Slots	37
Frame Controller and Fans	38
GFC-8322	38
Reference Inputs	38
Environment	38
Service Information	39
Warranty and Repair Policy	39
Glossary	41

Introduction

This guide covers the installation and use of the OGX-FR openGear High Density Modular Frame. The following chapters are included:

- “**Introduction**” summarizes the guide and provides important terms, and conventions.
- “**Before You Begin**” provides general information to keep in mind before installing and configuring your OGX-FR.
- “**Hardware Overview**” provides a basic introduction to the OGX-FR hardware features.
- “**Physical Installation**” provides instructions for the physical installation of the OGX-FR.
- “**Ethernet Cabling**” provides an overview of connecting input and output devices to the OGX-FR.
- “**Reference Cabling**” provides an overview of the reference distribution and how to connect a reference source to the OGX-FR.
- “**Using DashBoard**” outlines the Diagnostic Panel features and displaying the OGX-FR in DashBoard.
- “**Maintenance**” provides instructions for cleaning the fan filter and replacing a failed Cooling Fan Module.
- “**Technical Specifications**” provides the specifications for the OGX-FR.
- “**Service Information**” provides information on the warranty and repair policy for your OGX-FR.
- “**Glossary**” provides a list of terms used throughout this guide.

Related Publications

It is recommended to consult the following Ross documentation before installing and configuring your OGX-FR:

- ***DashBoard User Manual***, Ross Part Number: 8351DR-004
- ***MFC-OG3-N User Manual***, Ross Part Number: 8322DR-004
- ***OGX-FR Series Quick Start Guide***, Ross Part Number: 8322DR-202

Documentation Conventions

Special text formats are used in this guide to identify parts of the user interface, text that a user must enter, or a sequence of menus and sub-menus that must be followed to reach a particular command.

Interface Elements

Bold text is used to identify a user interface element such as a dialog box, menu item, or button. For example:

In the **Network** tab, click **Apply**.

User Entered Text

Courier text is used to identify text that a user must enter. For example:

In the **Language** box, enter `English`.

Referenced Guides

Text set in bold and italic represent the titles of referenced guides, manuals, or documents. For example:

For more information, refer to the ***DashBoard User Manual***.

Menu Sequences

Menu arrows are used in procedures to identify a sequence of menu items that you must follow. For example, if a step reads "**File** > **Save As**," you would click the **File** menu and then click **Save As**.

Important Instructions

Star icons are used to identify important instructions or features. For example:

- ★ Contact your IT department before connecting to your facility network to ensure that there are no conflicts. They will provide you with an appropriate value for the IP Address, Subnet Mask, and Gateway for your device.

Contacting Technical Support

At Ross Video, we take pride in the quality of our products, but if problems occur, help is as close as the nearest telephone.

Our 24-hour Hot Line service ensures you have access to technical expertise around the clock. After-sales service and technical support is provided directly by Ross Video personnel. During business hours (Eastern Time), technical support personnel are available by telephone. After hours and on weekends, a direct emergency technical support phone line is available. If the technical support person who is on call does not answer this line immediately, a voice message can be left and the call will be returned shortly. This team of highly trained staff is available to react to any problem and to do whatever is necessary to ensure customer satisfaction.

- **Technical Support:** (+1) 613-652-4886
- **After Hours Emergency:** (+1) 613-349-0006
- **E-mail:** techsupport@rossvideo.com
- **Website:** <http://www.rossvideo.com>

Before You Begin

If you have questions pertaining to the operation of OGX-FR, please contact us at the numbers listed in “**Contacting Technical Support**”. Our technical staff is always available for consultation, training, or service.

The OGX-FR frame offers the flexibility of independent rear modules for connectivity to a wide array of interfaces such as BNC, twisted-pair audio, and fiber. Each frame offers a full rear module that accommodates one card each, or a high density split rear module that accommodates two cards each. Using the split rear module allows for up to 20 independent openGear solutions to be installed.

- ★ Cards and rear modules designed for the DFR-8321 frames are also supported by the OGX-FR frames. However, some cards and rear modules may be designed specifically for the OGX-FR frames only. Refer to the openGear card documentation for details on the frames you can use.

Features

The OGX-FR frame includes the following features:

- Two independent looping reference inputs feed all card slots
- Can house any mix of analog, digital, video and audio cards in the same frame
- Available with individual card specific modules for connector flexibility
- Optional redundant power supply is hot-swappable for 24/7 operation
- Power switch is accessible from front of the rack frame
- Power supplies are replaceable from the front of the frame without requiring rear-frame access
- Separate power cords to each supply for power feed redundancy
- PowerLock cord retainer mechanism guards against accidental power loss
- Durable powder-coat paint finish
- Removable hinged front door for easy card insertion and removal, and flexibility in servicing the cooling fans
- Aluminum and steel construction to reduce weight and increase strength
- 2RU frame houses up to 20 cards
- Robust 500W power supply with two integral cooling fans per power supply
- Comes standard with the Cooling Fan Module for increased ventilation and enhanced reliability
- Supports Gigabit ethernet connectivity to each openGear card in the frame (requires the MFC-OG3-N Network Controller Card)
- Provides a system alarm LED on the frame front door
- Provides an LCD Diagnostic Panel on frame front that reports the frame name, and IP address; provides the ability to scroll through these reported error conditions
- Removable door with durable powder-coat paint finish
- 5-year transferable warranty

Workflow

The OGX-FR frame comes standard with Ethernet connectivity for basic configuration and monitoring of openGear® cards through the DashBoard control system. An optional advanced networking card, the MFC-OG3-N, adds an on-board Gigabit Ethernet switch, with GigE access to each of the 20 processing card slots.

★ Gigabit Ethernet is only available with the MFC-OG3-N installed in the OGX-FR frame.

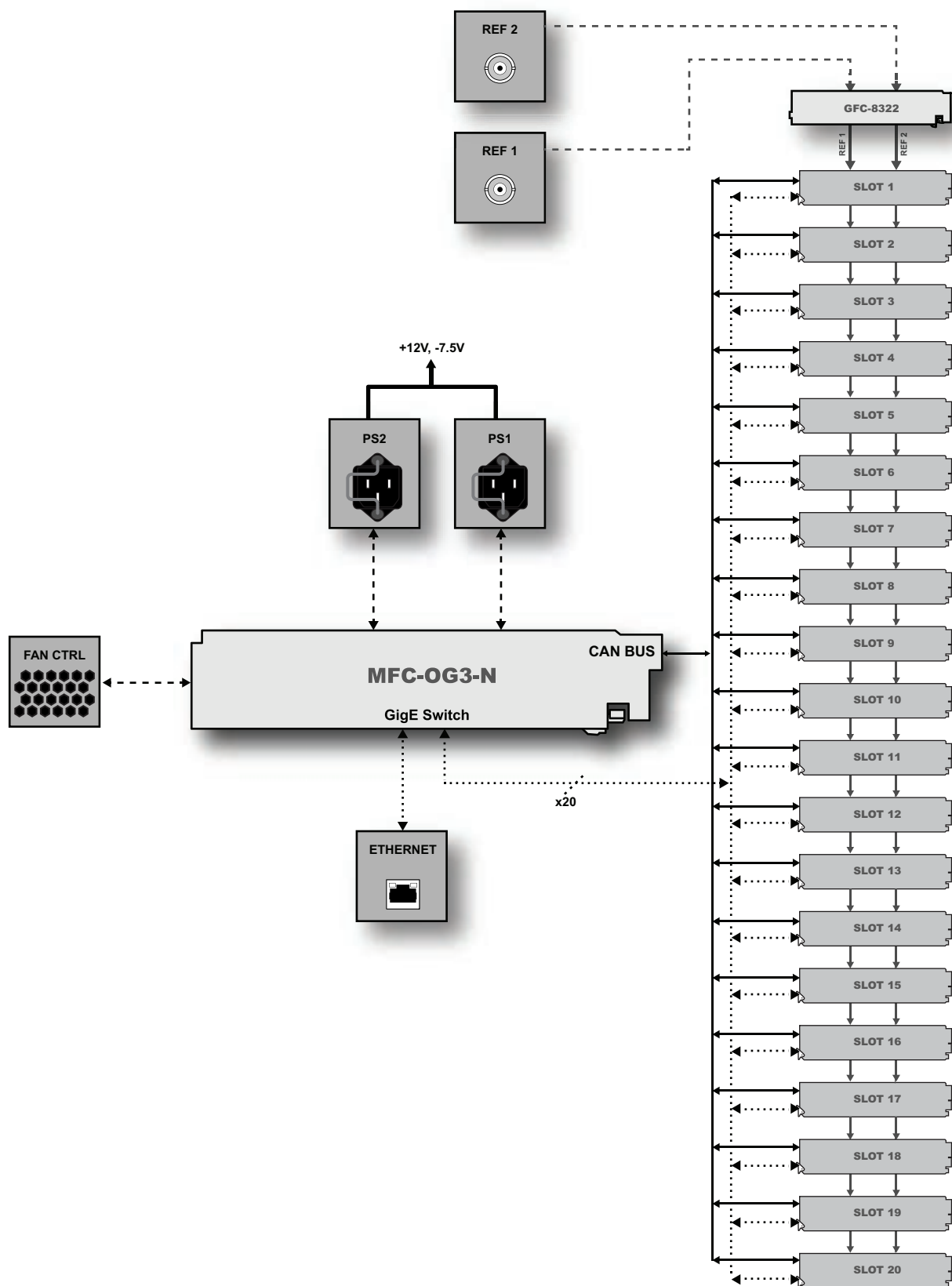


Figure 1 Workflow of the OGX-FR

Hardware Overview

Your OGX-FR frame is a 2RU modular frame, designed to accommodate openGear cards. A complete list of available openGear cards is available on our website.

Front Panel Overview

This section briefly summarizes the features of the OGX-FR front panel.

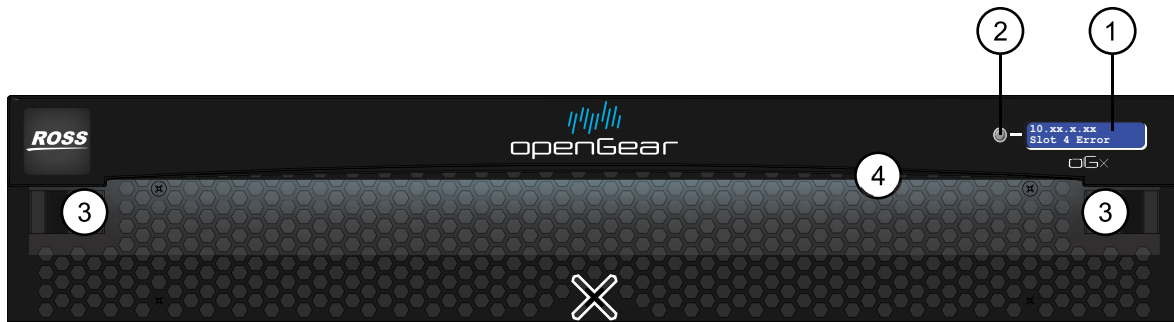


Figure 2 OGX-FR — Front Panel

1. Diagnostic Panel

The Diagnostic Panel is located on the frame front panel and enables you to quickly monitor the frame. Information is presented in two separate lines of text:

- › The top line in the display cycles through the name assigned to the frame in DashBoard and the current IP address of the frame (or 0.0.0.0 if none available). The IP address is configured on the MFC-OG3-N Network Controller Card. Refer to the user guide for your card to learn more about setting the IP address and frame name in DashBoard.
- › The second line reports errors or alarm conditions from any source. This includes fan failure alarms, power supply warnings, or errors reported by the cards installed in the frame. The Diagnostic Panel organizes the messages starting with the most recent at the top of the list. Refer to the user guide for your openGear card to learn more about the types of error conditions that your card reports.

2. Toggle Button

The **Toggle** button is located directly to the left of the Diagnostic Panel and enables you to mute the audio alarm, or quickly scroll through the error messages reported on the second line of the Diagnostic Panel.

- › Pressing the **Toggle** button once mutes the audio alarm.
 - › Pressing the **Toggle** button multiple times scrolls through the messages.
- ★ If you are scrolling through the list and a new error condition is reported, the list is automatically updated and returns you to the beginning of the list.

3. Door Tabs

These tabs enable you to open the frame door and gain access to the interior of the frame. An alarm is raised when the frame door is opened longer than 5 minutes.

4. Frame Glow

This feature is a user-programmable frame glow that can be configured to glow a preset color, or customized colors to indicate different alarms. This is also useful when trying to locate the frame within a rack room. Refer to the **MFC-OG3-N and MFC-8322-S User Guide** for details on configuring this feature.

OGX-FR Interior

This section briefly summarizes the features of the interior of the OGX-FR chassis.

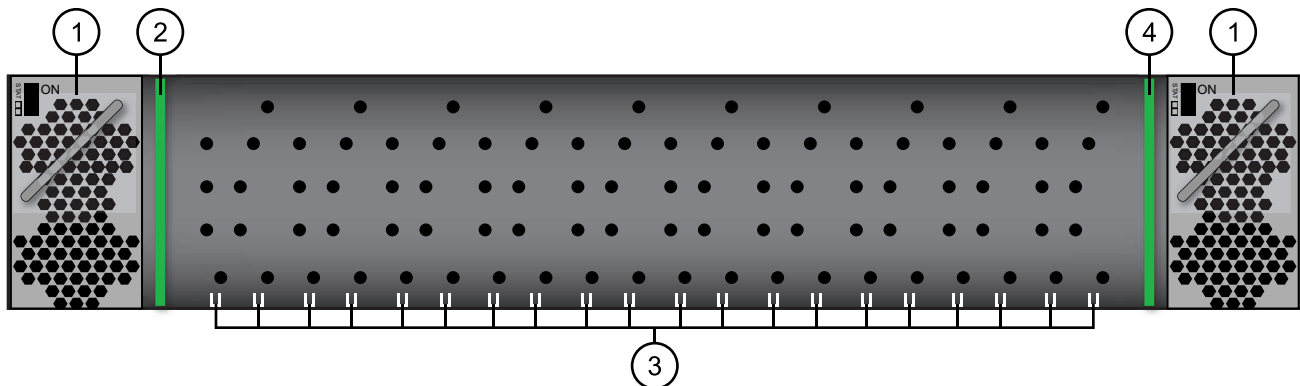


Figure 3 OGX-FR — Interior Features with Door Removed

1. Power Supplies

The OGX-FR frame can accommodate two front-loaded power supplies. However, each frame comes standard with one power supply (the power supply on the left in **Figure 3**). Although a single power supply can fully power a loaded frame, the addition of a second (optional) power supply gives the frame full power redundancy. Each power supply is fed by a separate power cord, which is held in position to guard against accidental power loss.

2. GFC-8322

The GFC-8322 comes pre-installed in the designated slot immediately to the right of PS1, and is secured with a metal retaining latch. Its primary function is to distribute the reference signals to openGear cards installed in the frame. Refer to “**GFC-8322 Overview**” for more information.

3. Card Slots

There are a total of 20 card slots in the OGX-FR chassis and are used to install openGear cards into the chassis. Depending on the card model and rear module you are using, multiple slots may be required. Refer to the user guide for your openGear card for installation details for your card.

4. Controller Card

There are two models of Controller Card: MFC-8322-S and the MFC-OG3-N. The Controller Card comes pre-installed in the OGX-FR frame. You must have the MFC-OG3-N installed in the OGX-FR frame to take advantage of the Gigabit ethernet connectivity available for openGear cards in the frame. Refer to the **MFC-OG3-N User Guide** for more information.

5. Mounted Fans (not shown)

The OGX-FR frames were designed with front-door mounted fans to provide forced air cooling for all cards, and additional cooling for the power supplies. An intelligent fan controller adjusts fan speed with changes in frame power loading. Particular attention has been paid to frame acoustics in order to keep fan noise to a minimum.

Rear Panel Overview

This section briefly summarizes the features of the OGX-FR rear panel.

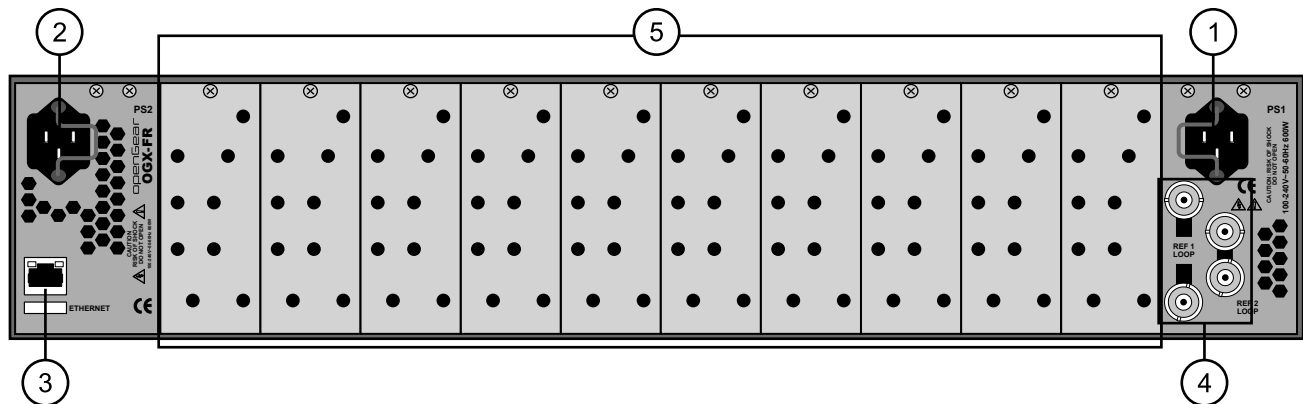


Figure 4 OGX-FR — Rear Panel

1. PS1 Power Supply Connector

This connector is the AC Connector for the main power supply. Refer to “**Connecting to a Power Supply**” for more information.

2. PS2 Power Supply Connector

This connector is the AC Connector for the redundant power supply.

3. ETHERNET Communication Port

The Ethernet port is an RJ45 connector is used to connect the optional Network Controller card to an external Ethernet network. This Network Controller card is required to bridge the external Ethernet network to the local communication bus for monitoring and control of cards installed in the frame. Only cards with the Communication bus interface will be able to be monitored and controlled this way.

★ The Ethernet port does not provide Power-over-Ethernet (PoE).

4. REF Connectors

Two sets of looping BNC inputs are provided to accept two independent reference signals supporting the following reference signal types: Analog black, Tri-level sync, and AES/DARS reference.

5. Rear Modules for openGear Cards

The OGX-FR frame supports module-dependent rear modules. Rear modules can be ordered with cards, and are easy and quick to install. Blank plates must be installed if the slots are not populated with openGear cards and rear modules.

openGear Rear Modules

If your OGX-FR frame was ordered with cards requiring full rear modules or split rear modules, the appropriate modules are installed at the factory or included with the cards.

Supports DFR-8321 and OG3-FR Rear Modules

The OGX-FR frame supports all existing rear modules designed for the DFR-8321 and OG3-FR frames. However, rear modules designed for use in the OGX-FR frame are not compatible with other openGear frames.

Identifying an OGX-FR Rear Module

There are two ways to identify an OGX-FR frame rear module:

- the notched top of the rear module, and
- a small notch on the bottom left corner of the rear module that fits into a second seating slot on the midplane of the OGX-FR frames. Note that this small notch is not present on other frame rear module types.



Caution — *Attempting to install an OGX-FR frame rear module into an OG3-FR, DFR-8321, DFR-8320, or DFR-8310 frame can damage the rear module.*

Rear Module Types

This section provides an overview of the rear module types for your OGX-FR frame.

Full Rear Modules

The full rear modules features a single card connector and can include a combination of BNC, WECO™, fiber optic, serial, and ethernet connectors. Each module occupies two slots in the frame and accommodates one card. Ensure the openGear card is installed in the correct slot in the OGX-FR frame. Up to 10 cards can be installed in a frame when using these modules.

Split Rear Modules

Much like the modules for the OG3-FR frames, split modules for the OGX-FR frame features two card connectors and can have a combination of BNC, WECO™, fiber optic, serial, and ethernet connectors. Each card connector is routed to a column of five BNCs. A split rear module occupies two slots in the OGX-FR frame but provides connectors for two openGear cards, allowing you to install up to 20 cards in the frame.

Blank Rear Modules

Blank Rear Modules (R2-BLANK) are used when the slot does not have an openGear card installed. This helps to ensure proper frame cooling and ventilation.

Physical Installation

If you have questions pertaining to the installation of OGX-FR, please contact us at the numbers listed in “**Contacting Technical Support**”. Our technical staff is always available for consultation, training, or service.

For More Information on...

- the technical specifications for the OGX-FR, refer to “**Technical Specifications**”.
- installing an openGear card and its rear module in the OGX-FR frame, refer to the user guide for your openGear card.

Before You Begin

The OGX-FR mounts in the rack frame by means of four rack screws fastened through the front mounting ears. This should normally be sufficient to carry the load, including the weight of accompanying cables. However, in certain applications such as mobile truck installations, it may be desirable to also support the rear of the frame. The optional Rear Support Bars and Brackets are specifically engineered to compensate for extra load stress.

For More Information on...

- installing the brackets, refer to “**Installing the Rear Support Bars and Brackets**”.
- the frame dimensions, refer to “**Dimensions**”.

Static Discharge

Throughout this chapter, please heed the following cautionary note:



ESD Susceptibility — *Static discharge can cause serious damage to sensitive semiconductor devices. Avoid handling circuit boards in high static environments such as carpeted areas and when synthetic fiber clothing is worn. Always exercise proper grounding precautions when working on circuit boards and related equipment.*

Ventilation and Cooling

Your OGX-FR frame was specially engineered to minimize internal heat buildup and thus improve card reliability.

For More Information on...

- the power dissipation of individual openGear cards, refer to the user guide for your card.
- replacing the cooling fan module, refer to “**Fan Filter Maintenance**”.

Ventilation

For applications using less than 40W in a non-ventilated OGX-FR, but where the individual card power consumption is greater than 8W, the cards should be evenly distributed in the frame. This will prevent the creation of concentrated heat, or unbalanced heat-rise areas, in the frame.



Notice — *For reliable performance, it is recommended that the OGX-FR frame door not be opened for longer than 5 minutes on frames loaded with more than 40W. For some extra high power cards, the door should not be open for more than 1 minute.*

Cooling Fan Module

The OGX-FR frames come standard with a Cooling Fan Module installed in the frame door. The frame and PS-OGX can supply up to a maximum of 500W of card power, with 15W per card. Under these ventilated conditions, there is no requirement for extra vertical spacing between the frames. The OGX-FR frames can be stacked one on top of the other, a feature that is highly desirable in densely crowded rack frame environments.



Caution — *The two sides of the OGX-FR frame have perforations that are needed to ventilate the power supplies and must not be blocked.*

Airflow Requirements

Under some conditions, the ambient air temperature inside rack-mount cabinets can be greater than the ambient temperature within a room. For safe long term reliability, ensure the ambient air temperatures at the OGX-FR frame front intake area are within the product's specified operating temperature range. Adequate ventilation within a rack frame must also be maintained. Ensure to adhere to the following clearance recommendations:

- Minimum 2" (5.08cm) clearance both right and left-hand side of the chassis sides with unrestricted vertical airflow.
- Minimum 5" (12.7cm) clearance at the chassis rear with unrestricted vertical airflow.

Installation Requirements

Keep the following in mind when installing your OGX-FR frame:

- Install the frame for maximum stability during operation and in such a way as to allow adequate ventilation.
- The frame cannot be sealed in a closed container and must be installed in free air space where the ambient temperature is monitored and controlled to not exceed 40°C (104°F) at the frame front door airflow intake.
- Ensure that adequate space exists in front and behind the frame and on both sides of the frame for airflow exhaust.
- The location of the frame should be accessible, dry, and dust-free.

Installing the Rear Support Bars and Brackets

Under normal conditions, mounting the OGX-FR frame to the front of the rack with four rack screws should be sufficient to carry the load, including the weight of accompanying cables.

To help reduce mechanical stress due to cable weight, the FSB-OGX rear support brackets are available for the OGX-FR frame. The FSB-OGX are specifically engineered to compensate for extra load stress associated with certain applications, such as mobile truck installations, to also support the rear of the OGX-FR frame.

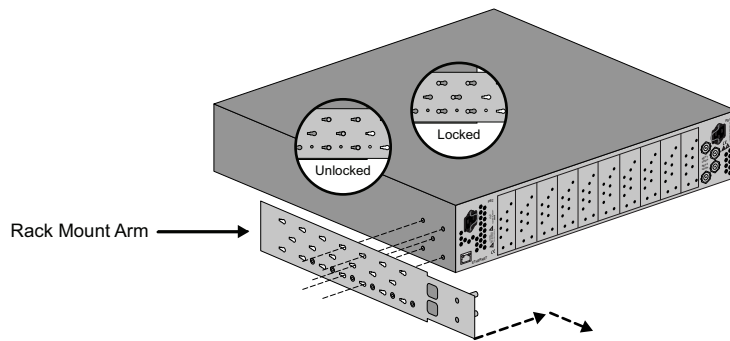
Installing the FSB-OGX

This section describes how to attach the FSB-OGX rear support bars to a OGX-FR frame.

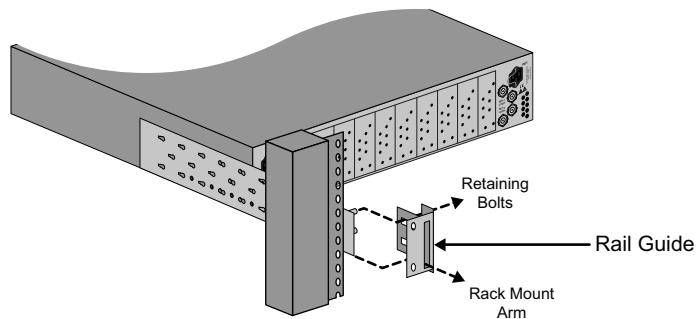
- ★ The FSB-OGX cannot be installed on the DFR-8321 or DFR-8310 frames.

To install the FSB-OGX

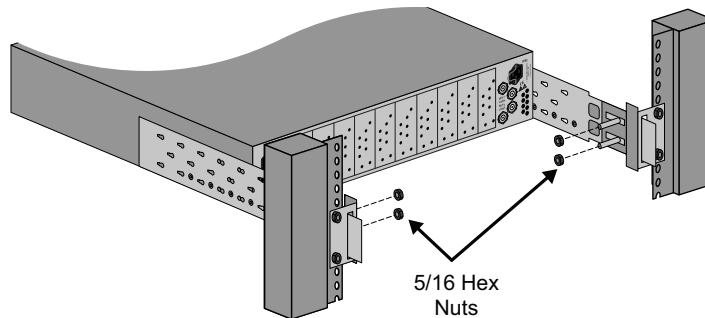
1. Attach the Rack Mount Arms of the FSB-OGX to the OGX-FR frame.



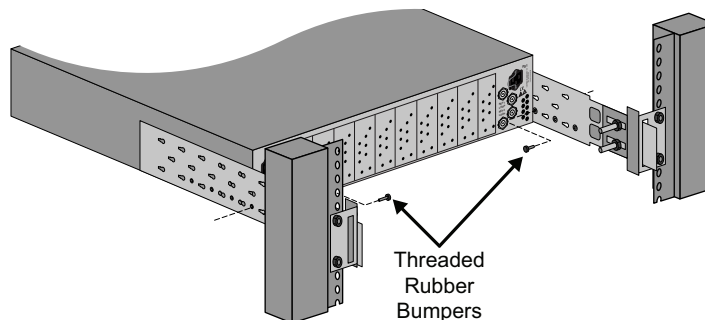
2. Install the Rail Guides for each Rack Mount Arm.



3. Secure the Rail Guides and Rack Mount Arms to the rack.



4. Use the provided Threaded Rubber Bumpers to lock the Rack Mount Arms in place.



Connecting to a Power Supply

The OGX-FR comes standard with one power supply, with a second optional power supply (PS-OGX) available for redundancy. For redundancy, and in applications where the equipment is used in a critical signal path, we recommend that two power supplies be used in the OGX-FR. One A/C power cable has been provided with each power supply ordered.

For further redundancy, each power cord should be connected to a separate power source for protection against failure of the A/C power circuit. In the event of one power supply failure, the frame load is seamlessly transferred to the other redundant power supply. Although the power supply is “hot-swappable” turning the power supply off before inserting or removing it from the frame will increase the life span of the connectors.

Power Supply Connectors (PSU1, PSU2)

There are two power supply connectors located on the back of the OGX-FR:

- **PSU1** — This connector is designated as the AC Connector for the first power supply.
- **PSU2** — This connector is designated as the AC Connector for the second power supply.

Where the connectors are located is dependent on the frame you are using.

For More Information on...

- power supply locations in your OGX-FR, refer to “**Rear Panel Overview**”.
- installing the PS-OGX, refer to “**Installing a Frame Power Supply**”.

Power Cable Connection

This section includes information for connecting the power cables for the OGX-FR frame.



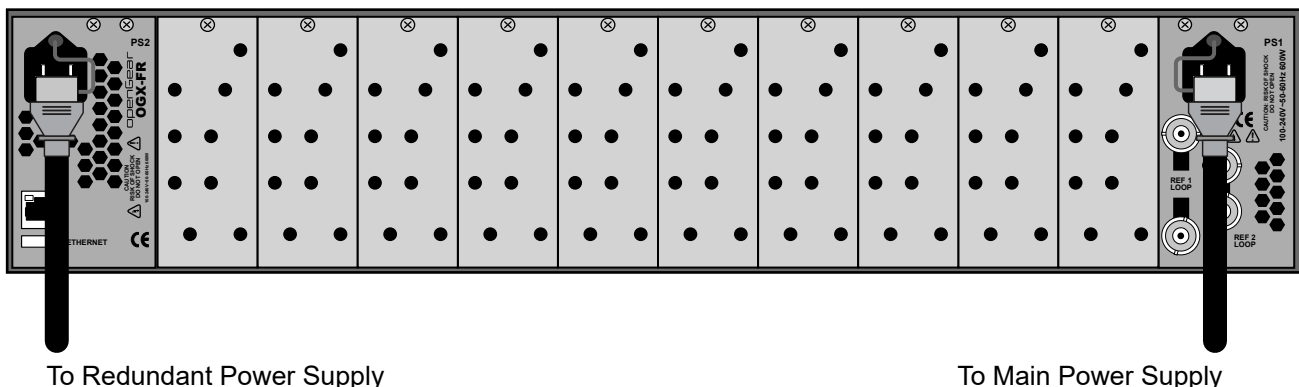
Warning Hazardous Voltages — *The safe operation of this product requires that a protective earth connection be provided. This protective earth is provided by the grounding conductor in the equipment's supply cord. To reduce the risk of electrical shock to operator and service personnel, this ground conductor must be connected to an earthed ground.*



Warning — *In some countries, it may be necessary to supply the correct mains supply cord. Use only an approved IEC 320 C-13 type A/C line cord rated for a minimum 10A at 250V and certified for the country of use.*

To connect the power cables for an OGX-FR

1. Connect the cable's female IEC connector to the frame socket marked **PS 1**.
2. If the **Redundant Power Supply** option is installed, plug the second IEC connector into **PS 2**.



★ Each AC connector includes a PowerLock, which is designed to retain the power cable connector.

3. Clip the PowerLock over the shoulder of the inserted AC cable end.
4. Connect the supplied power cable's three-prong male connector to an AC outlet.

Ethernet Cabling

The exact steps for connecting to your facility via an ethernet network depends on the network requirements of your facility. Contact your IT Department before connecting to your facility network to ensure that there are no conflicts.

★ DashBoard uses the open SLP protocol to locate openGear frames on the network.

For More Information on...

- configuring the Network Controller card, refer to its user guide.
- the specifications for the OGX-FR, refer to “**Technical Specifications**”.

Cabling the Ethernet Port on the OGX-FR Frame

The Ethernet port is a standard 10/100/1000 RJ45 Ethernet connector and is used to exchange information with an external monitoring, or control, system over an ethernet network. You must have the MFC-OG3-N installed in the OGX-FR to take advantage of the Gigabit ethernet connectivity available for cards in the OGX-FR frame.

Required Pinouts

The Ethernet port has its RJ45 connector wired as a Network Interface Card (NIC). **Table 1** provides the wiring information based on the type of Network Controller card installed in the OGX-FR frame.

Table 1 Ethernet Port Pinouts

Pin Number	MFC-8322-S (10/100 Ethernet)	MFC-OG3-N (10/100/1000 Ethernet)
	Signal	Signal
1	Tx+	TD1+
2	Tx-	TD1-
3	Rx+	TD2+
4	*	TD3+
5	*	TD3-
6	Rx-	TD2-
7	*	TD4+
8	*	TD4-

* Shorted, 75ohm to Ground

Connecting to a Network

Use up to 328ft (100m) of CAT6 cable or better for Gigabit Ethernet network or use up to 328ft (100m) of CAT5 cable or better for 10/100Mbit Ethernet networks.

To connect the Ethernet port to a network

- ★ Connect the **ETHERNET** (RJ-45) port to the same network as your DashBoard client computer or to a network that has a route to the network your DashBoard client computer is on.
1. Connect one free end of a straight through CAT5/5e/6 cable to a free port of the network hub.
 2. Connect the other end of the same cable to the Ethernet port on the OGX-FR rear panel.

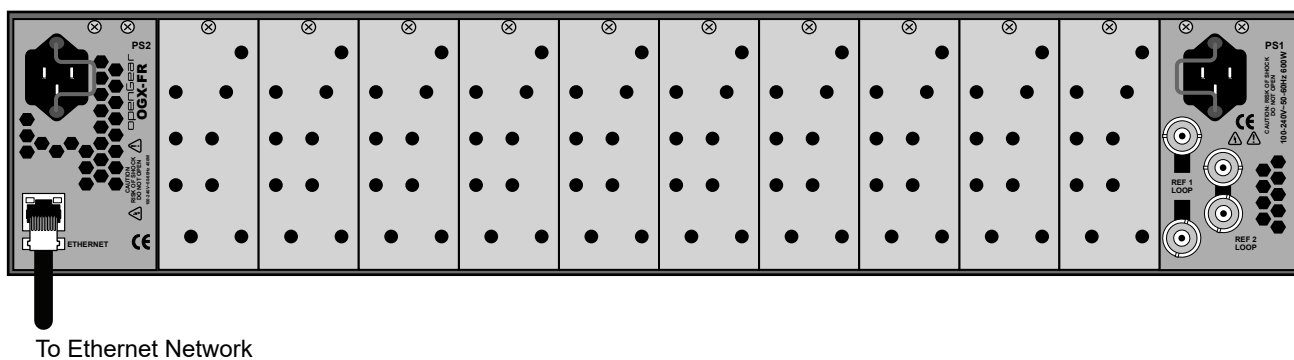


Figure 5 OGX-FR Frame — Ethernet Cabling

Reference Cabling

The OGX-FR frame includes two independent looping reference BNCs (**REF 1**, **REF 2**) with connection to each card slot. Each REF BNC accepts a single composite or tri-level sync signal to feed timing information to the openGear cards installed in the frame.

GFC-8322 Overview

The GFC-8322 receives the analog reference signals driven to the **REF 1** and **REF 2** BNCs located on the rear panel of OGX-FR frame. The GFC-8322 then distributes both reference signals to each of the 20 slots in the frame.

Frame settings such as the frame IP address, frame name, and the frame serial number are stored on the GFC-8322 via its Serial EEPROM.

Connecting a Video Reference Source

This feature distributes one or two reference signals to all cards in the OGX-FR frame. Cards which need an external reference use this master reference signal in place of taking the signal from one of the card BNCs. This provides for ease of installation and reduction in reference cabling requirements.

Connecting to a Reference Source

If only one reference type is required for the OGX-FR frame, connect it to the **REF 1** BNC. Two reference types enables you to use reference sources with a different signal formats, each via a separate REF BNC.

For More Information on...

- on specifying the analog reference source for your openGear card, refer to its user guide.

To connect a reference source to the OGX-FR

1. Connect one end of a Belden cable to the **REF 1** BNC on the OGX-FR rear panel.
2. Connect the other end of the same Belden cable to the applicable output port on the external reference source device.

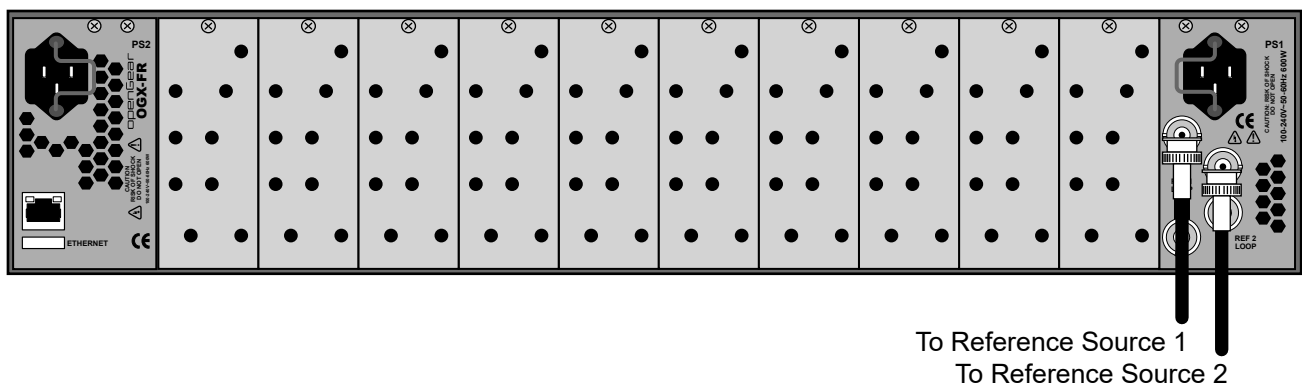


Figure 6 OGX-FR — Reference Input Cabling

3. If the reference is not being looped to another device, ensure that the **REF 1 LOOP** BNC is terminated with a 75ohm terminator.
4. Repeat steps 1-3 for **REF 2** if a second reference source is required.

Looping the Reference Signals

Use this procedure if you have multiple frames that will switch simultaneously.

To loop a reference signal

1. Connect the **REF 1** LOOP BNC on the rear panel of the first frame to the **REF 1** IN BNC on the rear panel of the next frame using a 75ohm coaxial cable.
2. Continue looping the REF connectors across the frames that you want reference to this signal.
3. Ensure that the last frame in the video referencing loop has a 75ohm termination connected to its REF 2 IN BNC.

Troubleshooting

During normal operation, the GFC-8322 must never be removed from the OGX-FR frame. To ensure this, the metal retaining latch located on the front of the GFC-8322 must be engaged (pushed down) to prevent accidental removal of the GFC-8322 from its slot.

Verify that the GFC-8322 is properly seated in its slot and the retaining latch is engaged when troubleshooting any of the following conditions:

- reference signals are unavailable to the cards installed in the OGX-FR frame
- loss of network connection or the network settings for the OGX-FR frame were reset to the default values

Using DashBoard

This chapter provides instructions for launching DashBoard, displaying the OGX-FR in the Tree View of DashBoard, and accessing the interfaces for the openGear cards installed in your frame.

Overview

Each OGX-FR frame reports the openGear cards installed in its chassis as sub-nodes in DashBoard. Each openGear card can be configured and monitored independently via its options in DashBoard.

Before you can access your openGear cards, you must first ensure the OGX-FR displays in DashBoard. There are two methods for adding an OGX-FR frame to the Tree View in DashBoard:

- using the auto-connect feature or
- manually adding a frame by specifying the IP address of the frame.

Both methods are described in the following sections.

Launching DashBoard

DashBoard connects to the OGX-FR frame using a TCP/IP LAN connection.

★ DashBoard must run on a computer that has a physical wired ethernet connection. Wireless connections do not allow device discovery.

For More Information on...

- downloading and installing the DashBoard client software, refer to the ***DashBoard User Manual***.

To launch DashBoard

1. Ensure that DashBoard is installed on a PC connected to the same network as your OGX-FR frame.
2. Ensure that you are running the latest DashBoard software.
3. Launch DashBoard by double-clicking its icon on your computer desktop.

Using the Automatic Detection Feature


When DashBoard is launched, and the Automatic Discovery feature of DashBoard is enabled, the OGX-FR frame is automatically discovered and is available in the Tree View.

By default, DashBoard auto-detects any OGX-FR frame on the same IP subnet. How often DashBoard queries the network for new OGX-FR frames (the default is every 10 seconds) depends on how the Automatic Detection feature is configured in the Preferences menu of the DashBoard client.

Manually Adding OGX-FR Frames to DashBoard

You must add OGX-FR frames to the Tree View manually when the frame is on a different subnet from your computer running the DashBoard client.

To manually add an OGX-FR frame to a DashBoard Tree View

1. Click  from the Tree View toolbar.
The **Select Equipment or Service Type to Add** dialog opens.
2. Expand the **openGear / DashBoard Connect** node.

3. Select **TCP/IP DashBoard Connect or openGear Device**.
4. Click **Next >**.

The **New TCP openGear Frame Connection** dialog opens.

5. In the **IP Address** box, type the IP address of the OGX-FR frame.

To request that DashBoard detect the frame properties automatically

1. Click **Detect Frame Information**.
2. Verify that DashBoard retrieves the correct port, name, unique identifier, and other connection information from the specified IP address.
3. Verify that the **Automatically Track Updates to Frame Information** box is selected so that any changes are automatically updated in DashBoard.

To specify frame properties manually

1. Type the name of the OGX-FR frame, as you want it to appear in DashBoard.
2. From the **Protocol** options select **OGP** (openGear Protocol).
3. Use the **Port** field to specify the port used for communication.
4. Select the **Remember connection settings for this frame** box to retain the settings.
5. Click **Finish** to display the OGX-FR frame in the Tree View.

★ OGX-FR frames added to the Tree View are also displayed in the Advanced Tree View.

6. Repeat the procedure for each OGX-FR frame that you wish to add to the Tree View.

Re-naming the OGX-FR Frame in the Tree View

Once your OGX-FR frame displays in DashBoard, you may wish to provide a unique display name for the frame for easier identification in the Tree View. There are two methods for re-naming an OGX-FR frame in DashBoard depending on how you added the frame to the Tree View in DashBoard. The first method is for frames manually added to the Tree View. The second method describes how to re-name an auto-detected frame using the DashBoard menu options available on the Network Controller Card. Both methods are described below.

To re-name a manually added OGX-FR frame

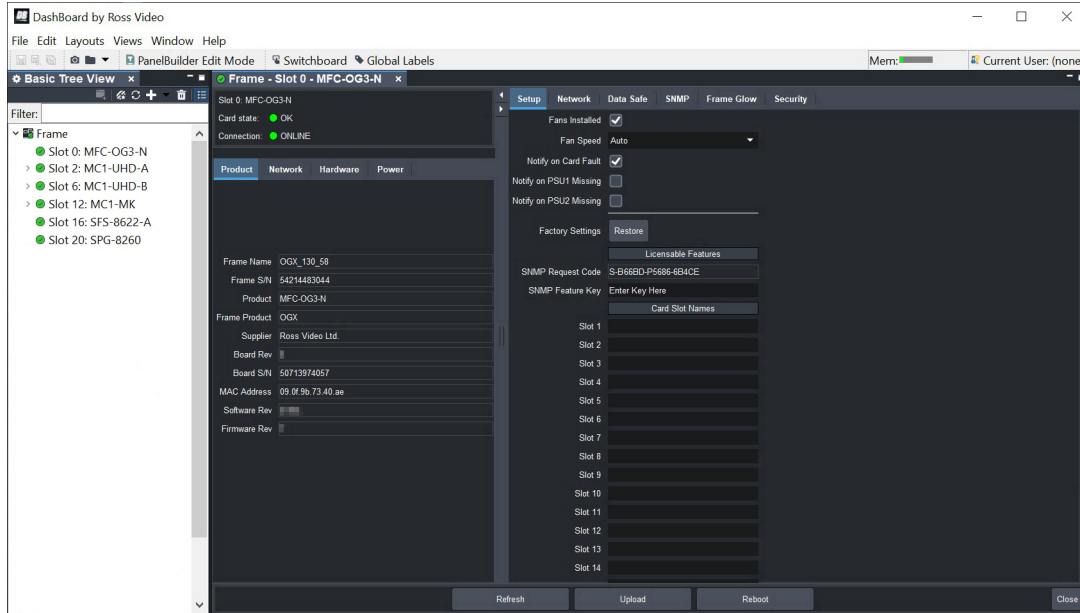
1. Right-click the OGX-FR frame you wish to rename.
2. Select **Rename Frame**.
3. Enter the new name for the OGX-FR frame in the text field provided.

To re-name an auto-detected OGX-FR frame

1. Right-click the OGX-FR frame you wish to rename.
2. Select **Open**.

The interface for the Network Controller Card displays in the DashBoard window.

In the following example, the interface for an MFC-OG3-N displays.




3. Select the **Network** tab.
4. Enter a new name for the OGX-FR frame in the **Frame Name** field.
5. Press **Enter**.
6. Click **Apply**.

Removing an OGX-FR Frame from the Tree View in DashBoard



This section outlines how to remove an OGX-FR frame from a Tree View in DashBoard. Once a frame is removed, DashBoard no longer reports the status in the Tree View and you are no longer able to monitor or control the affected devices.

★ If the OGX-FR frame you are removing is in a Custom Folder, you must first delete the frame from the Custom Folder before it can be removed from the Tree View.


To remove an OGX-FR frame from the Tree View

1. Right-click the OGX-FR frame you wish to remove.
2. Select  to remove the OGX-FR frame from the Tree View.

To disconnect an OGX-FR frame from the Tree View

1. Toggle  to off.
2. Right-click the OGX-FR frame status indicator.
3. Select .

Auto-Discovery

Selecting  for an auto-detected OGX-FR frame will temporarily remove the frame but the frame will re-appear in the Tree View again due to the auto-discovery feature of DashBoard. You must first disable the auto-discovery feature before you can remove a frame in this instance. Refer to the **DashBoard User Manual** for details on configuring the auto-discovery feature.

★ You can still disconnect from an auto-discovered frame by toggling the Automatic Discovery option off.

Using DashBoard to Access openGear Cards in the OGX-FR Frame

The OGX-FR frame displays in DashBoard as a main node in the Tree View with a series of sub-nodes. Each sub-node represents an openGear card installed in that frame.

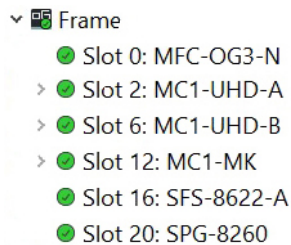
For More Information on...

- available menus and parameters for your openGear card, refer to the user guide for your card.

To access an openGear card in DashBoard

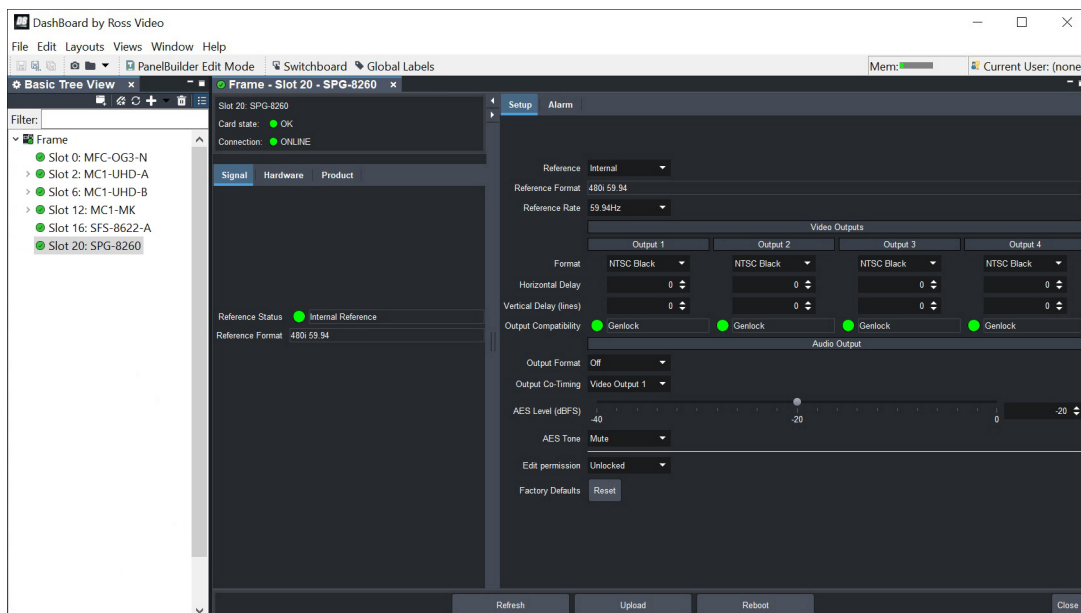
1. Locate the OGX-FR frame in DashBoard.
2. Expand the OGX-FR frame node.

A list of sub-nodes displays in the Tree View.

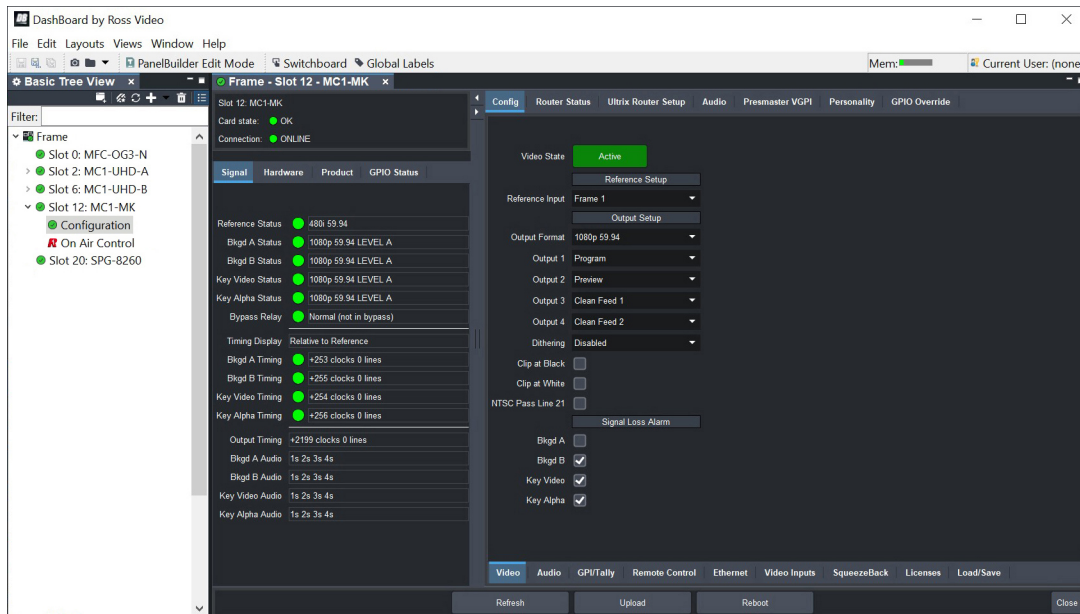


3. Double-click an openGear card node to display its interface in DashBoard.

In the example below, the SPG-8260 was selected.



4. If your openGear card has multiple interfaces:
 - a. Expand the openGear card node.
 - b. Double-click a sub-node to display that interface in the DashBoard window.
- In the example below, the Configuration interface for an MC1-MK is displayed.



Maintenance

This chapter summarizes maintenance tasks such as installing a new frame power supply, cleaning the frame air filter, and replacing the Cooling Fan Module.

Installing a Frame Power Supply

The PS-OGX is a power factor corrected supply, capable of working with all world AC standards (100-240V). Each supply has an indicator LED on its front panel, and an error detection circuit that monitors the power supply operation.

★ The PS-OGX power supply installs on the right or left side of the OGX-FR chassis.

To install the power supply

1. Carefully unpack the power supply from its box, and retain all packing material for future use, if required.
2. Align the power supply into an unused power slot on the side of the frame.
3. Push the power supply in firmly to ensure a tight connection at the rear of the frame.

Fan Filter Maintenance

Routine maintenance of the fan filter installed in the OGX-FR is highly recommended to ensure proper airflow through the chassis.

Cleaning the Frame Air Filter

The OGX-FR has a single air filter that is used to prevent dust and airborne particulates from contaminating the frame. This filter should be cleaned at least once a year; but may need to be cleaned more frequently in some environments.

To remove the air filter from the frame door

1. Locate the four 3/16" screws (#850-091R) on the frame door faceplate. (**Figure 7**)



Figure 7 OGX-FR — Screw Locations on Front Panel

2. Using a Phillips screwdriver, remove the four screws that secure the faceplate. Set the screws aside.
3. Ensure that the side door tabs are disengaged from the door.
4. Remove the faceplate by gently pulling it towards you while avoiding the Diagnostic Panel, the **Toggle** button, and the **STATUS** LED.

5. Gently remove the air filter off the metal protective screen that separates the filter from the fans.

To clean the air filter

1. Brush any loose dust off of the filter.
2. Place the filter under warm running water to remove any remaining dust. On one side of the filter is a foam filter material. When rinsing, water should flow out of this side.
3. Remove the filter from the water and thoroughly pat dry with a towel to remove any moisture.

To replace the clean, dry filter into the frame door

1. Place the clean air filter across the metal protective screen, orienting it in the same position you found it in during step 1 of the procedure **"To remove the air filter from the frame door"**.
2. Install the faceplate by gently fitting it back onto the frame door, ensuring the faceplate does not interfere with the Diagnostic Panel, the **Toggle** button, and the **STATUS** LED.
3. Verify that the side door tabs are seated properly in the cutouts on the frame door bracket.
4. Using a Phillips screwdriver, secure the faceplate using the four screws removed during step 2 of the procedure **"To remove the air filter from the frame door"**.

Replacing the Frame Air Filter

Order the Air Filter Replacement Kit (AFK-OGX) from your openGear sales representative before replacing the frame air filter in your OGX-FR frame.

To remove the old air filter from the frame door

1. Using a Phillips screwdriver, remove the four 3/16" screws (#850-091R) screws that secure the faceplate. Set the screws aside. (**Figure 8**)



Figure 8 OGX-FR — Screw Locations on Front Panel

2. Ensure that the side door tabs are disengaged from the door.
3. Remove the faceplate by gently pulling it towards you while avoiding the Diagnostic Panel, the **Toggle** button, and the **STATUS** LED.
4. Gently remove the air filter off the metal protective screen that separates the filter from the fans.

To install the new filter into the frame door

1. Place the new air filter across the metal protective screen, orienting it in the same position you found it in during step 1 of the procedure **"To remove the old air filter from the frame door"**.
2. Install the faceplate by gently fitting it back onto the frame door, ensuring the faceplate does not interfere with the Diagnostic Panel, the **Toggle** button, and the **STATUS** LED on the frame door.

3. Verify that the side door tabs are seated properly in the cutouts on the frame door bracket.
4. Using a Phillips screwdriver, secure the faceplate using the four screws removed during step 1 of the procedure **"To remove the old air filter from the frame door"**.

Replacing the Cooling Fan Module

The Cooling Fan Module is installed in the OGX-FR door. To replace a failed Cooling Fan Module, you need to replace the entire frame door.

- ★ Contact your openGear sales representative to order a Cooling Fan Module Replacement Kit (CFM-OGX).

Replacing the OGX-FR Door

The CFM-OGX includes the fan board and filter pre-installed in a new OGX-FR frame door. You will need to remove the old door from your OGX-FR frame and replace it with the new door.

To remove the old door from the OGX-FR frame

1. Gently pull the side door tabs towards the center of the door, releasing the door from the frame.
- ★ The door extender arms retain the door to the chassis.
2. Using both hands, pull the door towards you.
3. Tilt the door upward until the extender arms match the cutout for the retaining bolts.
4. Gently push the door extender arms in and over the retaining bolts and unhook from the frame.
5. Remove the door and place it on a clean, flat, static-free surface.

To install the new door in the frame

1. Using both hands, with the door tilted up, slide the new door into the frame while pushing the extender arms in and over the retaining bolts.
2. Pull and release the door tabs to ensure the:
 - frame door is securely locked to the OGX-FR frame, and
 - the tabs latch into the frame.

Technical Specifications

This chapter provides technical information for OGX-FR.

★ Specifications are subject to change without notice.

Dimensions

Table 2 Technical Specifications — Chassis Dimensions

Item	Specifications
Number of RU	2
Height	3.5" (8.89cm)
Width	19" (48.26cm)
Depth	17.7" (45cm)
Weight (two PS-OGX installed)	20lb (9.07kg)

PS-OGX

Table 3 Technical Specifications — Power

Item	Specifications
Input	6.3A (650W)
Output 1	12V 41.6A, 500W maximum
Output 2	-7.5V 5A, 37.5W maximum
Total	Sum of both outputs not to exceed 500W

Card Slots

Table 4 Technical Specifications — Card Slots

Item	Specifications
Number of Slots	20
Total Power Available	450W
Maximum Card Power	
High-density (Split) Rear Module ^a	15W per card
Standard Rear Module ^b	30W per card ^c
Double-wide Rear Module ^d	60W per assembly ^{e,f}

a. Accommodates two openGear cards and requires two slots in the frame chassis.

b. Accommodates one openGear card and requires two slots in the frame chassis.

c. Or 45W if the openGear card has integrated cooling.

d. Accommodates one or two openGear cards and requires four slots in the frame chassis.

e. Or 75W for a single card with integrated cooling.

f. Or 90W for a multi-slot assembly with integrated cooling and receiving power from two or more midplane connectors.

Frame Controller and Fans

Table 5 Technical Specifications — Frame Controller and Fans

Item	Specifications
Max. Power: +12V Rail	4A, 48W
Max. Power: -7.5V Rail	0.2A (1.5W)
Total	50W maximum

GFC-8322

Table 6 Technical Specifications — GFC-8322

Item	Specifications
Max. Power: +12V Rail	0.2A (2.4W)
Max. Power: -7.5V Rail	0.2A (1.5W)
Total	3.9W maximum

Reference Inputs

Table 7 Technical Specifications — Reference Inputs

Item	Specifications
Number of Inputs	2 looping
Level	1Vpp nominal
Signal	Analog video sync (black burst or tri-level), or AES/EBU DARS
Impedance	75ohm terminating
Return Loss	>30dB to 30MHz
Maximum DC on REF Input	±1V

Environment

Table 8 Technical Specifications — Environment

Item	Specifications
Maximum Ambient Temperature	0°C to 40°C (32°F to 104°F)
Humidity, non-condensing	<95%

Service Information

Routine maintenance to this openGear product is not required. In the event of problems with your card, the following basic troubleshooting checklist may help identify the source of the problem. If the frame still does not appear to be working properly after checking all possible causes, please contact your openGear products distributor, or the Technical Support department at the numbers listed under the “**Contacting Technical Support**”.

1. **Visual Review** — Performing a quick visual check may reveal many problems, such as connectors not properly seated or loose cables. Check the card, the frame, and any associated peripheral equipment for signs of trouble.
2. **Power Check** — Inspect the power indicator LED on the distribution frame front panel for the presence of power. If the power LED is not illuminated, verify that the power cable is connected to a power source and that power is available at the power main. Confirm that the power supplies are fully seated in their slots. If the power LED is still not illuminated, replace the power supply with one that is verified to work.
3. **Input Signal Status** — Verify that source equipment is operating correctly and that a valid signal is being supplied.
4. **Output Signal Path** — Verify that destination equipment is operating correctly and receiving a valid signal.
5. **Unit Exchange** — Exchanging a suspect unit with a unit that is known to be working correctly is an efficient method for localizing problems to individual units.

Warranty and Repair Policy

The OGX-FR frame is warranted to be free of any defect with respect to performance, quality, reliability, and workmanship for a period of FIVE (5) years from the date of shipment from our factory. In the event that your OGX-FR frame proves to be defective in any way during this warranty period, Ross Video Limited reserves the right to repair or replace this piece of equipment with a unit of equal or superior performance characteristics.

Should you find that this OGX-FR frame has failed after your warranty period has expired, we will repair your defective product should suitable replacement components be available. You, the owner, will bear any labor and/or part costs incurred in the repair or refurbishment of said equipment beyond the FIVE (5) year warranty period.

In no event shall Ross Video Limited be liable for direct, indirect, special, incidental, or consequential damages (including loss of profits) incurred by the use of this product. Implied warranties are expressly limited to the duration of this warranty.

This User Manual provides all pertinent information for the safe installation and operation of your OGX-FR frame. Ross Video policy dictates that all repairs to the OGX-FR frame are to be conducted only by an authorized Ross Video Limited factory representative. Therefore, any unauthorized attempt to repair this product, by anyone other than an authorized Ross Video Limited factory representative, will automatically void the warranty. Please contact Ross Video Technical Support for more information.

In Case of Problems

Should any problem arise with your OGX-FR frame, please contact the Ross Video Technical Support Department. (Contact information is supplied at the end of this publication.)

A Return Material Authorization number (RMA) will be issued to you, as well as specific shipping instructions, should you wish our factory to repair your OGX-FR frame. If required, a temporary replacement frame will be made available at a nominal charge. Any shipping costs incurred will be

the responsibility of you, the customer. All products shipped to you from Ross Video Limited will be shipped collect.

The Ross Video Technical Support Department will continue to provide advice on any product manufactured by Ross Video Limited, beyond the warranty period without charge, for the life of the equipment.

Glossary

The following terms are used throughout this guide:

Active image — the portion of the video picture area (production aperture) that is being utilized for output content. Active image excludes letterbox bars and pillarbox bars.

Card — openGear terminal devices within openGear frames, including all components and switches.

CBR — constant bit rate.

CDN — content distribution network.

DashBoard — the DashBoard Control System.

DF — Differentiated Services.

DTVCC captions — CEA-708 captions.

Frame — the OGX-FR frame that houses the OGX-FR.

HLS — HTTP Live streaming.

HTTP — Direct Hypertext Transfer Protocol.

MIB — management information base.

Network Controller Card — the MFC-OG3-N and any available options unless otherwise noted.

NTSC captions — the CEA-608-D: Line 21 Data Services captions.

openGear frame — refers to the OGX-FR frames unless otherwise noted.

PAL — PAL-B and PAL-G unless otherwise stated.

PCR — program clock reference.

PID — packet identifier.

Production aperture — the image lattice that represents the maximum possible image extent in a given standard (e.g. the full size of all active pixels and active lines). For example, the 1080i production aperture would be 1920x1080.

RTMP — Real Time Messaging Protocol.

Stream — a transport stream present at the port.

System — the mix of interconnected production and terminal equipment in your environment.

TCP — Transmission Control Protocol.

TOS — Type of Service.

TPG — Test Packet Generator.

TTL — Time To Live.

UDP — User Datagram Protocol.

User — the person who uses the OGX-FR.

