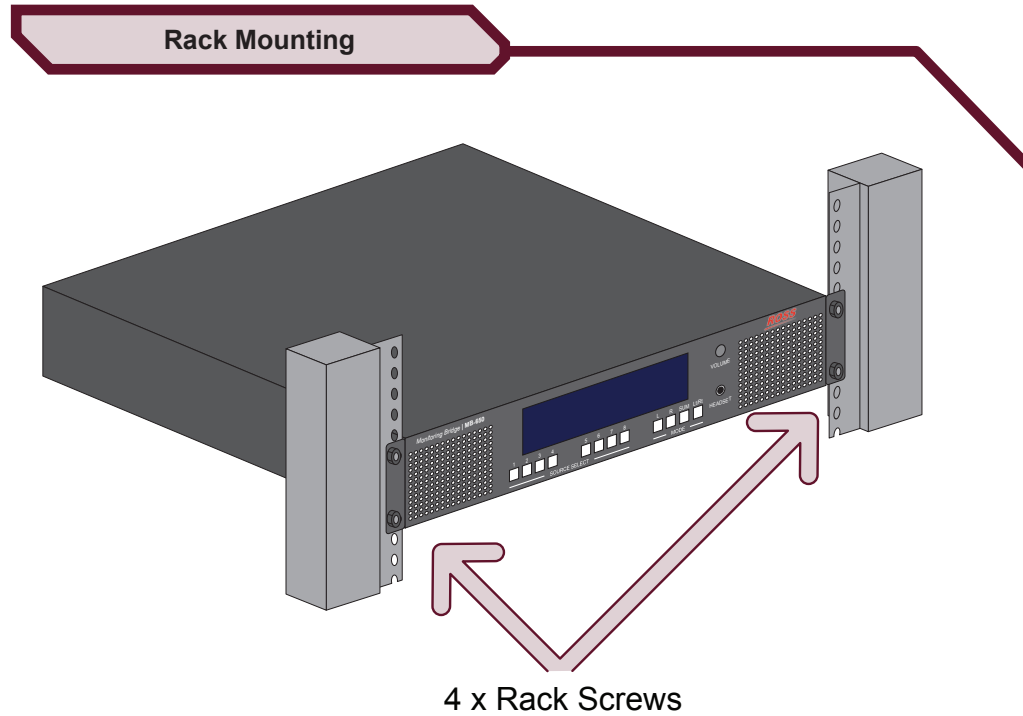


# MB-650 Installation and Cabling



Before you set up and operate your MB-650, see the "Important Safety Instructions" section in the *MB-650 User Manual*.

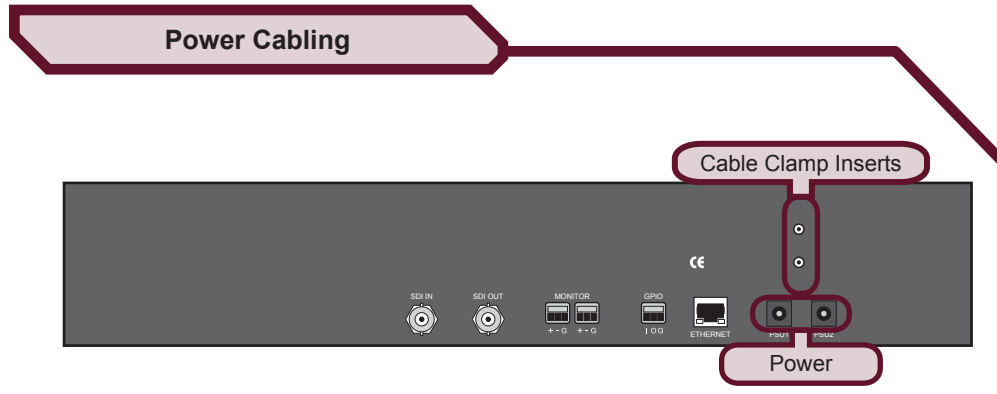
The *MB-650 User Manual* is available on the Gear Documentation disc that accompanied your unit.



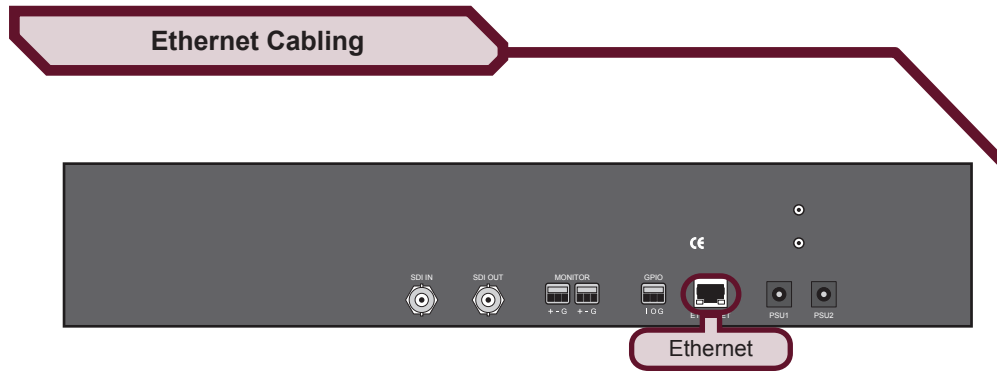
Keep the following in mind when installing your MB-650:

- Install the MB-650 for maximum stability and adequate ventilation
- Ensure the MB-650 is installed in free air space where the ambient temperature is monitored and controlled to not exceed 40°C (104°F) at the frame front door airflow intake
- Ensure that adequate space exists in front and behind the MB-650 and on both sides of the frame for airflow exhaust
- The location of the MB-650 should be accessible, dry, and dust-free

Physical Specifications	
Clearance	Side: 2.00" (50mm)
	Rear: 3.00" (75mm)
Height	3.5" (8.89cm)
Width	19.00" (48.26cm)
Depth	8.5" (21.59cm)
Temperature	maximum: 40°C



**Note:** The MB-650 powers on automatically when the power supply is plugged in.



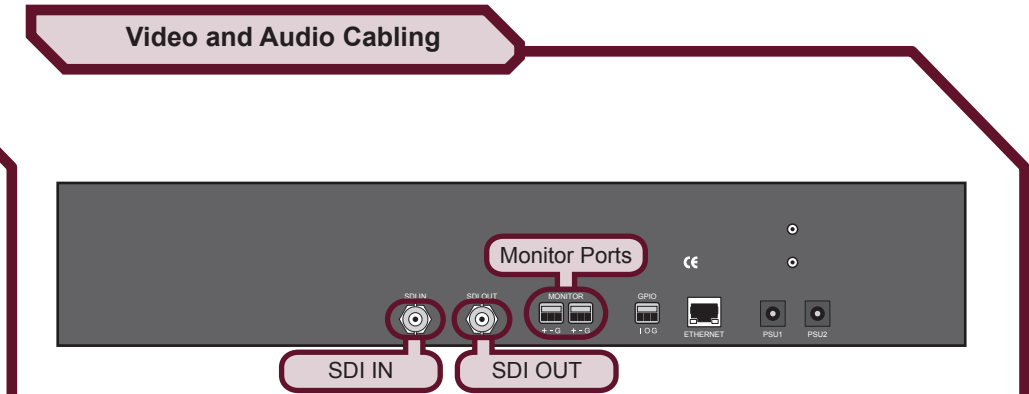
**Note:** Contact your IT Department before connecting to your facility network to ensure that there are no conflicts.

## Specifications

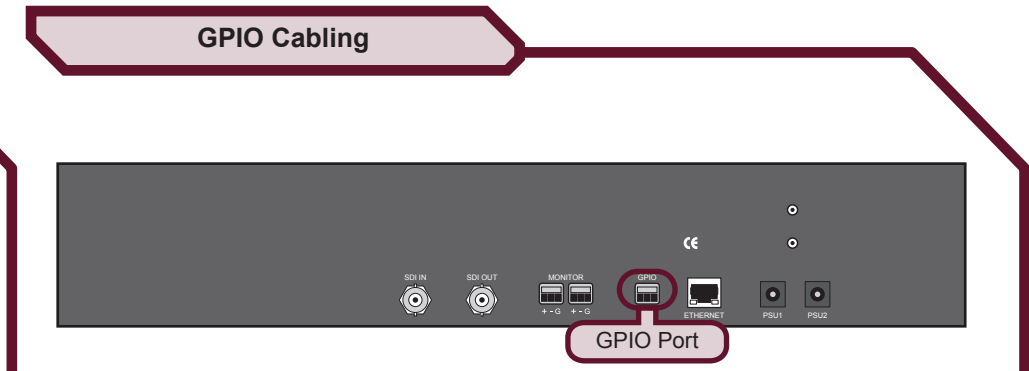
SDI Input and Output	
Number of Inputs	1
Number of Outputs	1
Connector Type	75ohm BNC
Signal Level	800mV nominal
Return Loss	-10dB to 3G

Analog Audio Monitor Output	
Number of Outputs	2
Connector Type	3-pin terminal blocks
Reference Level	-20dBFS = +4dBu
Frequency Response	+/-0.5dB 20Hz-20kHz
Distortion	<0.01%THD+N (20Hz-20kHz)

Power	
Consumption	90-240VAC 50/60Hz 20W



**Note:** For a -20dBFS input, there will be a +4dBu output.



**Note:** Shorting the I pin to the G pin will mute the front speakers, and the audio level on the rear monitor ports will be controlled by the front volume knob.

# MB-650 Configuration

## Using Dashboard

The Dashboard client software enables you to monitor and configure the MB-650 from a computer connected to your facility network. The MB-650 provides two interfaces in Dashboard that display as nodes in the Tree View under the MB-650: Network Connect, and the MB-650 interface.

### To launch Dashboard

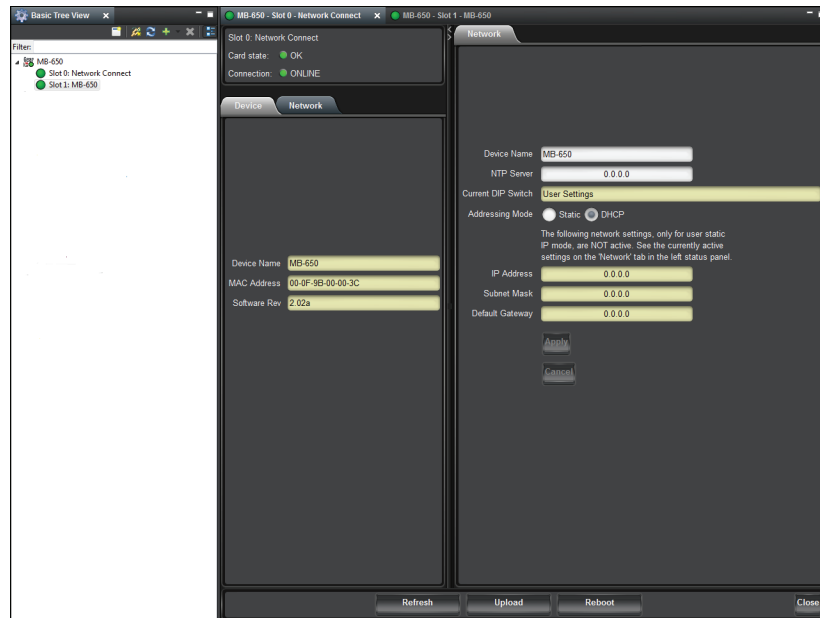
1. Ensure the MB-650 is connected to the same network as your Dashboard client computer.
2. Double-click the Dashboard icon on your computer desktop.
3. Power on the MB-650.
4. Wait approximately 30 seconds while the MB-650 establishes network communications.
5. Verify that the MB-650 displays in the Tree View of Dashboard.

### If the MB-650 fails to display in Dashboard

1. Verify the ethernet cables are properly connected.
2. Check the link/activity LEDs on the MB-650 Ethernet port.
3. Ensure the MB-650 network settings for the factory default values.

### To access the MB-650 interfaces

1. From the Tree View, expand the node for the MB-650.
2. Select the Slot 0 node to display the Network Connect interface in the right-half of the Dashboard window.
3. Select the Slot 1 node to display the audio interface in the right-half of the Dashboard window.



## Network Configuration

Once communication is established with the MB-650, the network settings can be adjusted using the following procedure. Note that the steps are optional, you may perform as many, or as few, as needed.

### To change the MB-650 network settings

1. From the Tree View, expand the node for the MB-650.
2. Select the **Network Connect** node.
3. Use the **Addressing Mode** options to change between Static and DHCP addressing.
4. Use the **IP Address** field to specify the address of the MB-650.
5. Use the **Subnet Mask** field to specify the subnet mask for your LAN.
6. Use the **Default Gateway** field to specify the IP Address for connection outside the subnet.
7. Click **Apply** to save and apply the new settings.

## Setting the Master Password

Right-clicking an MB-650 mode in the Tree View of Dashboard provides the option to Lock/Unlock Access. Locking an MB-650 requires the user to enter a Master Password before gaining access to the MB-650.

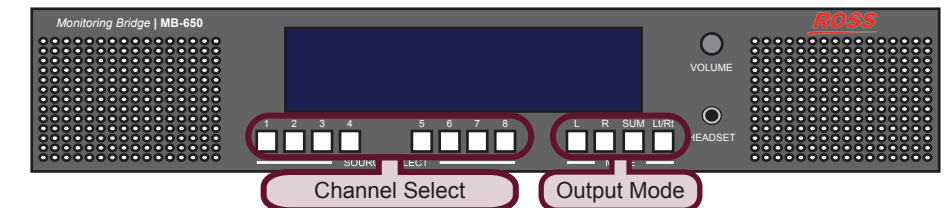
### To set a new Master Password for the MB-650

1. From the Tree View, right-click the MB-650 node.
2. Select **Lock/Unlock Access**.
3. Select the box for the MB-650 you wish to set a new password for.
4. Type the current password in the **Old Password** field.
5. Type the new password in the **New Password** field.
6. Click **OK** to apply the new password.

## Audio Setup via Panel

### Using the Control Panel

Selecting the audio channels you want to monitor is provided by the push-buttons located below the audio meters, allowing you to select which stereo pair to route to the speakers.



Use the four Mode push-buttons to specify the output mode as follows:

- **L** — routes the left channel of the selected source to the speakers
- **R** — routes the right channel of the selected source to the speakers
- **SUM** — allows any of the channels to be summed together to monitor more than one source at a time
- **Lt/Rt** — provides an Lt/Rt downmix of your 5.1 surround audio

## Audio Setup via Dashboard

You can also use the MB-650 interface in Dashboard to specify the audio channel to monitor.

### To setup the audio monitoring via Dashboard

1. From the Tree View, expand the node for the MB-650.
2. Select the MB-650 node.
3. Use the **Input Source** field to specify the audio channel to route to the speakers.
4. Use the **Volume** field to set the volume level of the speakers.



Having a problem? Call our free, 24-hour technical support hotline to speak with a live product specialist located right here in our facility.

Tel: (+1) 613 • 652 • 4886

Email: techsupport@rossvideo.com

**ROSS**