

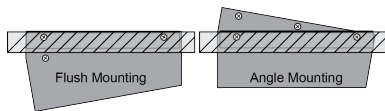
## SideBox Installation and Setup

### Installation

SideBox can be installed onto a desk, into the desk using the supplied Desk Mounting Brackets, or onto a standard VESA mount.

### Desk Mounting

SideBox can be mounted into a desk in either a flat or sloped position. How you want SideBox to be positioned determines where the **Desk Mount Brackets** are installed.

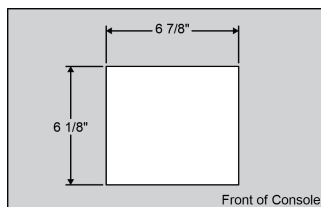


**Figure 1: In-Desk Mounting Options**

If you are sitting SideBox onto a desk you do not need to install the **Desk Mounting Brackets**.

### Desk Cutout

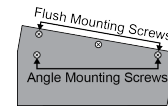
The desk cutout size for SideBox is the same if you are mounting SideBox in the flat or sloped position.



**Figure 2: Desk Cutout Size**

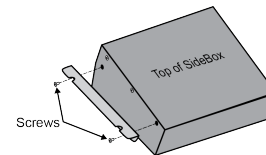
### To Install the In-Desk Mounting Brackets

1. Select the mounting option you want to use for how SideBox is installed.
2. Remove the mounting screws from the side of SideBox for the mounting option you have chosen.



**Figure 3: Mounting Screws**

3. Install the **Desk Mounting Bracket** onto the side of SideBox using the screws you just removed.

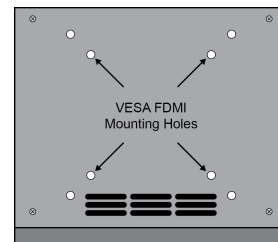


**Figure 4: Mounting Bracket**

4. Repeat this procedure for the other side of SideBox.

### VESA Mounting

The SideBox can be mounted onto a VESA FDMI MIS-D 75 or 50, C Mounting Arm.



**Figure 5: VESA Mounting Holes**

### Cabling

Each SideBox has connectors for primary (PS1), and secondary (PS2) power supply, and two RJ-45 communications ports (PREV and NEXT).



**Figure 6: SideBox Cable Connections**

**Note:** A maximum of 14 SideBoxes can be daisy-chained together off of a single External Link Port on Vision. A maximum of 8 SideBoxes can be daisy-chained together on Carbonite.

## To Cable SideBox

**Caution:** Always connect the 12V DC Power Supply to the SideBox before connecting the AC mains power. Connecting the power supply to the AC mains power before connecting to the SideBox could damage the SideBox.

1. Connect and secure one end of the **Control Cable** to the **External Link** port 2, 3, or 4 on Vision, or the **NEXT** port on Carbonite or another external module already connected to the control panel.
2. Connect and secure the other end of the **Control Cable** to the **PREV** port on the SideBox.
3. Connect and secure one 12V DC Power Supply to the PS1 connector on the back of the SideBox.

## SideBox Setup

### Setting Up SideBox with Vision

To set up communications between the Vision control panel and SideBox, you must do the following:

- Set the **External Link** port (**L2, L3, L4**) that you connected to SideBox to **External Module (Ext Module)**.
- Assign the SideBox to a panel row.

Refer to your *Vision Engineering Manual* for information on assigning the SideBox to an external link port, and assigning the SideBox to a panel row.

### LCD Contrast

If the module installed in the SideBox has an LCD display, such as mnemonics, the contrast of this display must be adjusted manually using a Phillips screwdriver.

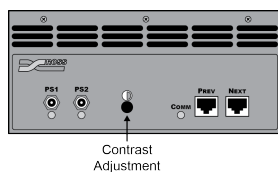


Figure 7: Contrast Adjustment

## Replacing a Module

**Important:** Contact Ross Video Technical Support before attempting to replace a module with a different type of module in a SideBox.

### To Remove a Module

1. Disconnect all power and communications cables connected to SideBox.
2. Remove the 14 screws from the front, back, and sides of the SideBox.

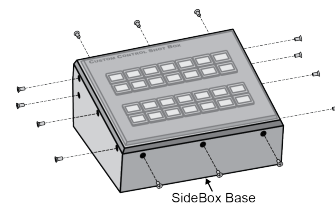


Figure 8: Removing Screws

3. Slowly lift the **SideBox Top** out of the **SideBox Base** until you can access the internal cables.
4. Disconnect both of the **Module Control Link Cables** and the **Power Cable** from the module.

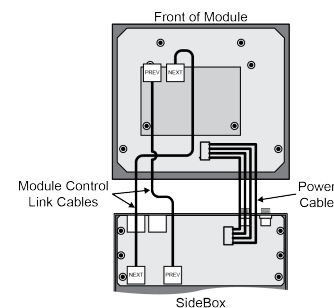


Figure 9: Disconnecting Internal Cables

5. Remove the 4 retaining nuts that secure the module onto the **Module Mounting Plate**.

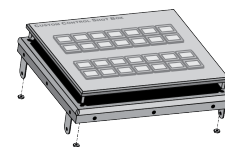


Figure 10: Removing Module