
Ross Video Limited



Crosspoint Module Installation Guide



Live Production Technology

Crosspoint Module Installation Guide

- Ross Part Number: **4800DR-345-02**
- Release Date: July, 2010. Printed in Canada

The information contained in this document is subject to change without notice or obligation.

Copyright

© **2010 Ross Video Limited**. All rights reserved.

Contents of this publication may not be reproduced in any form without the written permission of Ross Video Limited. Reproduction or reverse engineering of copyrighted software is prohibited.


Patents

This product is protected by the following US Patents: 4,205,346; 5,115,314; 5,280,346; 5,561,404; 7,034,886; 7,508,455. This product is protected by the following Canadian Patents: 2039277; 1237518; 1127289. Other patents pending.

Notice

The material in this document is furnished for informational use only. It is subject to change without notice and should not be construed as commitment by Ross Video Limited. Ross Video Limited assumes no responsibility or liability for errors or inaccuracies that may appear in this document.

Trademarks

-  is a registered trademark of Ross Video Limited.
- Ross, ROSS, ROSS®, MLE, Vision, Octane, Squeeze & Tease, Squeeze & Tease WARP, OverDrive, RossGear, openGear, DashBoard Control System, and SoftMetal are registered and unregistered trademarks of Ross Video Limited.
- Windows is a registered trademark of Microsoft Corporation in the United States and other countries.
- All other product names and any registered and unregistered trademarks mentioned in this document are used for identification purposes only and remain the exclusive property of their respective owners.

Important Regulatory and Safety Notices to Service Personnel

Before using this product and any associated equipment, refer to the "**Important Safety Instructions**" listed in the front of your *Engineering Manual* to avoid personnel injury and to prevent product damage.

Product may require specific equipment, and/or installation procedures to be carried out to satisfy certain regulatory compliance requirements. Notices have been included in this publication to call attention to these specific requirements.

General Handling Guidelines

- Careful handling, using proper ESD precautions, must be observed.
- Power down the system before PCB removal.



ESD Susceptibility: *Avoid handling the switcher circuit boards in high static environments such as carpeted areas, and when synthetic fiber clothing is worn. Touch the frame to dissipate static charge before removing boards from the frame, and exercise proper grounding precautions when working on circuit boards.*

Environmental Information

The equipment that you purchased required the extraction and use of natural resources for its production. It may contain hazardous substances that could impact health and the environment.

To avoid the potential release of those substances into the environment and to diminish the need for the extraction of natural resources, Ross Video encourages you to use the appropriate take-back systems. These systems will reuse or recycle most of the materials from your end-of-life equipment in an environmentally friendly and health conscious manner.

The crossed-out wheeled bin symbol invites you to use these systems.



If you need more information on the collection, reuse, and recycling systems, please contact your local or regional waste administration.

You can also contact Ross Video for more information on the environmental performances of our products.

Package Contents

The contents of a Crosspoint Module kit is listed below. If any items are missing, or damaged, contact Ross Video Technical Support.

Qty	Part#	Item
1	V-110M	Crosspoint Module
1	727-024R	Module Control Link Cable (Black, CAT5e, 2' long)
1	727-025R	Module Control Link Cable (Black, CAT5e, 1' long)
1	4800CR-375	Module Power Cable Adapter
5	650-005R	Retaining Nuts

Removing a Module

To remove an existing module, you must first disconnect the communications and power cables from the existing module, and then remove the module. If you are removing a blank module plate, there are no communications or power cables to disconnect.



Warning Hazardous Voltages: *Hazardous voltages are present in the control panel as long as any of the power supplies are connected to the AC power.*

1. Power down the control panel. The frame can remain on during this procedure. Refer to your Vision switcher documentation for information on shutting down the control panel.
2. Unplug the Primary and Redundant (if installed) power from the control panel.
3. Lift up on the control panel lid to gain access to the control panel tub.
4. Identify the module, or blank module plate, that you want to remove.
5. Disconnect the Module Power Cable from the existing module you want to remove. This 4-conductor ribbon cable delivers power to all the modules in the row. When removing it, ensure that you do not accidentally unplug it from any neighboring modules.

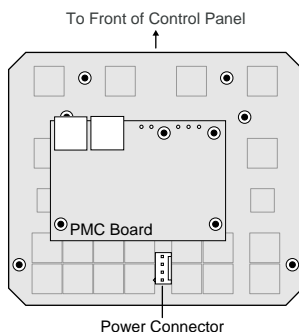


Figure 1: Power Connector

6. Disconnect both of the Module Control Link Cables from the existing module you want to remove. These CAT5e cables deliver all the command signals to and from the module, as well as the other modules in the same row.
7. Remove the four (4) Retaining Nuts located at each corner of the existing module, or blank module plate, and keep them in a safe place. A ¼ inch hex driver or wrench is required.
8. Remove the existing module, or blank module plate, from the control panel.

Installing a Crosspoint Module

To install the Crosspoint module, you must remove the plate from the Crosspoint module, install the plate into the module slot in the control panel, and then install the Crosspoint module onto the plate.

1. Remove the five (5) Retaining Screws securing the plate to the Crosspoint module and remove the plate.

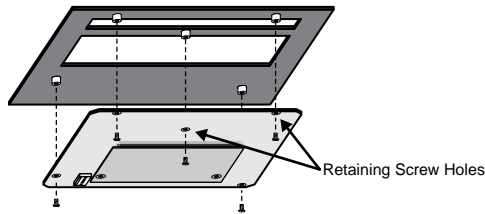


Figure 2: Crosspoint Module and Plate

2. Slide the Crosspoint plate into the open module slot that you want to install the module into.
3. Install the four (4) Retaining Nuts located at each corner of the Crosspoint plate to a maximum torque of 5 in-lbs (6 cm-kg). A ¼ inch hex driver or wrench is required.

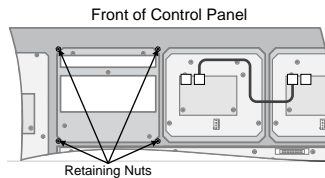


Figure 3: Crosspoint Module Plate Retaining Nuts

4. Align the Crosspoint module so the Retaining Screw Holes on the Crosspoint module line up with the mounts on the Crosspoint plate.
5. Using the screws obtained from removing the Crosspoint plate from the Crosspoint module, secure the Crosspoint module to the Crosspoint plate.

Next, you must install the Module Control Link cables and the Module Power cable to the Crosspoint module.

Cabling a Crosspoint Module

If you are installing the Crosspoint module into a slot on the right-hand side of the control panel, the Module Power Cable must be twisted to properly connect to the Power Connector on the Crosspoint module. In this case, you may want to replace the Module Power Cable with the longer cable provided (4800CR-361).

1. Connect and secure the existing Module Control Link Cable to the PREV port on the first module (1). This CAT5e cable with an RJ-45 connector on either end is already installed in the control panel.

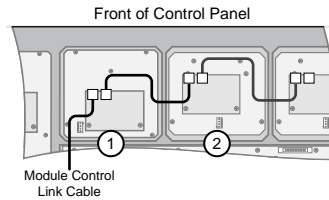


Figure 4: Module Control Link Cable

2. Connect and secure the free end of the Module Control Link Cable connected to the PREV port of the second module (2), to the NEXT port on the first module (1).
3. Connect the black and white end of the Module Power Cable Adapter to the Module Power Cable.

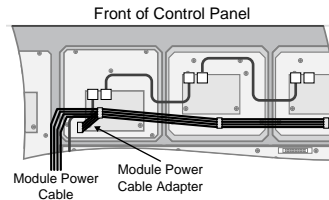


Figure 5: Module Power Cable Adapter

4. Connect the orange end of the Module Power Cable Adapter to the Crosspoint module.
5. Ensure that the Module Power Cable is properly connected to the remaining modules.

Upgrading a PMC

The Panel Module Controllers (PMCs) may need to be upgraded if you perform a software upgrade or replace a module. If PMCs need to be upgraded, the message PMCs need to be upgraded; please go to Panel Modules menu is displayed on the **Main Menu**.

- 1. Press **HOME > More > Setup > More > Panel Modules** .

A warning is displayed, asking you if you want to enter the menu. Press **Yes** to display the **Panel Modules Menu**.



Figure 6: Panel Modules Menu - Panel Row & Crosspoint

- 2. Press **Upgrade PMCs**.

The switcher starts upgrading the PMC on the control panel.

Mapping a Single Module

If you are mapping a single modules to a panel row, you can use select the link and node that you installed the module on and assign it to a panel row.

1. Press **HOME > More > Setup > More > Panel Modules** .

A warning is displayed, asking you if you want to enter the menu. Press **Yes** to display the **Panel Modules Menu**.

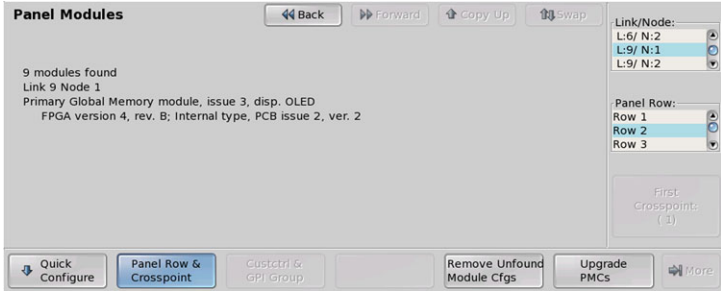


Figure 7: Panel Modules Menu - Panel Row & Crosspoint

2. Use the **Link/Node** knob to select the link and node that the module you want to assign to a row is installed on. You can also press a button on the module to go to the link and node.
3. Press **Panel Row & Crosspoint**.
4. Use the **Panel Row** knob to select the panel row that you want to assign the module to. You can select either an internal row (Row 1 to Row 8), or an external row (Row 1 to Row 16).
5. Use the **First Crosspoint** knob to select the number of the first crosspoint button on the module you are setting up. Each crosspoint module has 8 buttons, so the first button on module 1 is 1, the first button on module 2 is 9. If the module does not have crosspoint buttons, this knob is gray.
6. Set up a Custom Control module as follows:
 - a) Use the **Link/Node** knob to select the link and node that the module you want to assign to a row is installed on. You can also press a button on the module to jump to the link and node.
 - b) Press **Custctrl & GPI Group**.
 - c) Use the **First Custctrl** knob to select the number of the first custom control button on the module you are setting up. Each custom control module has 8 buttons, so the first button on module 1 is 1, the first button on module 2 is 9. If the module does not have custom control buttons, this knob is gray.

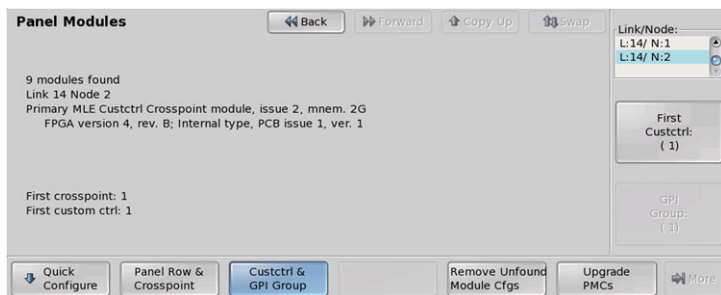


Figure 8: Panel Modules Menu - Custctrl & GPI Group

Notes:

Contact Us

Contact our friendly and professional support representatives for the following:

- Name and address of your local dealer
- Product information and pricing
- Technical support
- Upcoming trade show information

PHONE	General Business Office and Technical Support	613 • 652 • 4886
	After Hours Emergency	613 • 349 • 0006
	Fax	613 • 652 • 4425
E-MAIL	General Information	solutions@rossvideo.com
	Technical Support	techsupport@rossvideo.com
POSTAL SERVICE	Ross Video Limited	8 John Street, Iroquois, Ontario, Canada K0E 1K0
	Ross Video Incorporated	P.O. Box 880, Ogdensburg, New York, USA 13669-0880

Visit Us

Please visit us at our website for:

- Company information
- Related products and full product lines
- On-line catalog
- News
- Testimonials

www.rossvideo.com