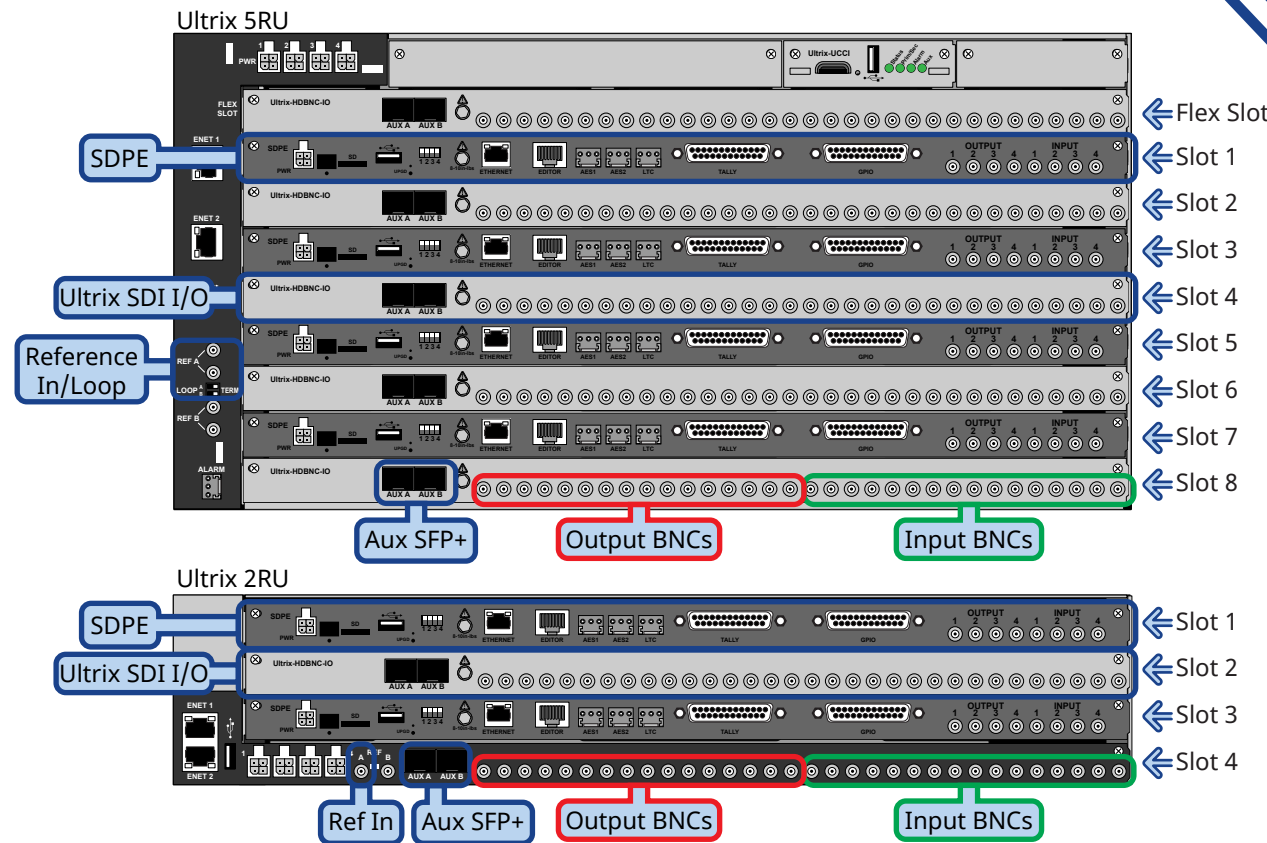


Ultrix 5RU Frame

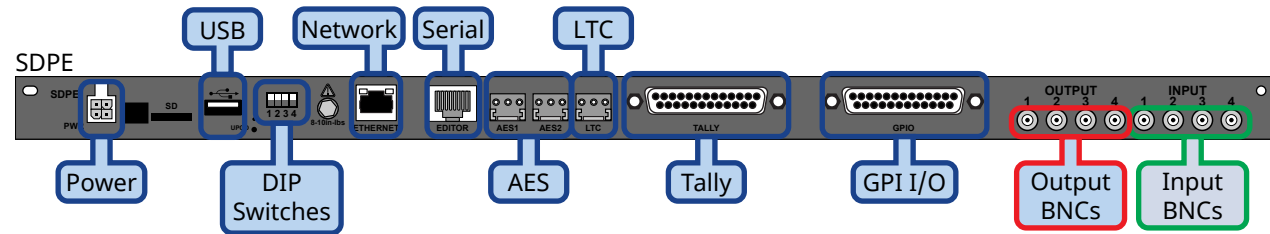
NOTICE Adequate ventilation within a rack frame must be maintained. Ensure side to side ventilation is not compromised. Refer to the Ultrix Installation Guide for more information.

Notes:

- The Ultrix 5RU and 2RU frames support multiple Carbonite switcher platforms at once.
- The switcher uses the Reference input to Ultrix for timing.
- All power supplies must be connected to operate the switcher.
- The input and output BNCs on the SDPE blade are mapped to physical inputs and outputs 19-22 on the switcher.
- Physical sources and destinations on the router must be mapped internally to inputs and outputs on the switcher.
- The Ultrix SDI I/O blade is used to provide sources and destinations that the switcher can access.
- The REF B connection is not supported at this time.
- A 1GbE ethernet connection is required for Ultrix.
- An Ultricool may be required, depending on your installation.
- The Ultra 5RU frame can support up to 4 SDPE blades and the 2RU can support up to 2 SDPE blades.



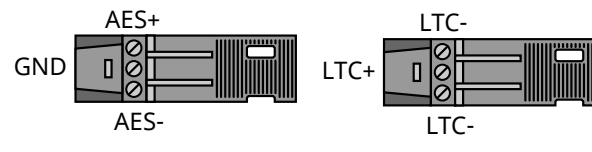
SDPE (Software Defined Production Engine)



CAUTION! Electrical shock hazard. The Power connector (PWR) must always be disconnected when the SDPE blade is not installed in the frame.

Notes:

- The switcher is made up of a single SDPE blade. Each SDPE blade provides an independent Carbonite switcher.
- The number of SDPE blades a system can have depends on the size of the Ultrix frame and the other blades that are installed.
- Each SDPE blade is independent of the others. If you upgrade one to a different version of software, that upgrade is not pushed to the other SDPE blades.
- There should be a 1-slot gap between SDPE blades in either the 5RU or 2RU router to ensure proper cooling. An I/O blade can be installed in that gap, but two SDPE blades should not be installed next to each other.
- The GPI and Tally ports on each SDPE blade are independent of each other.

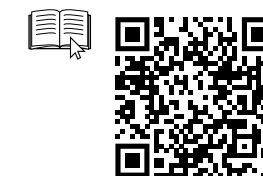
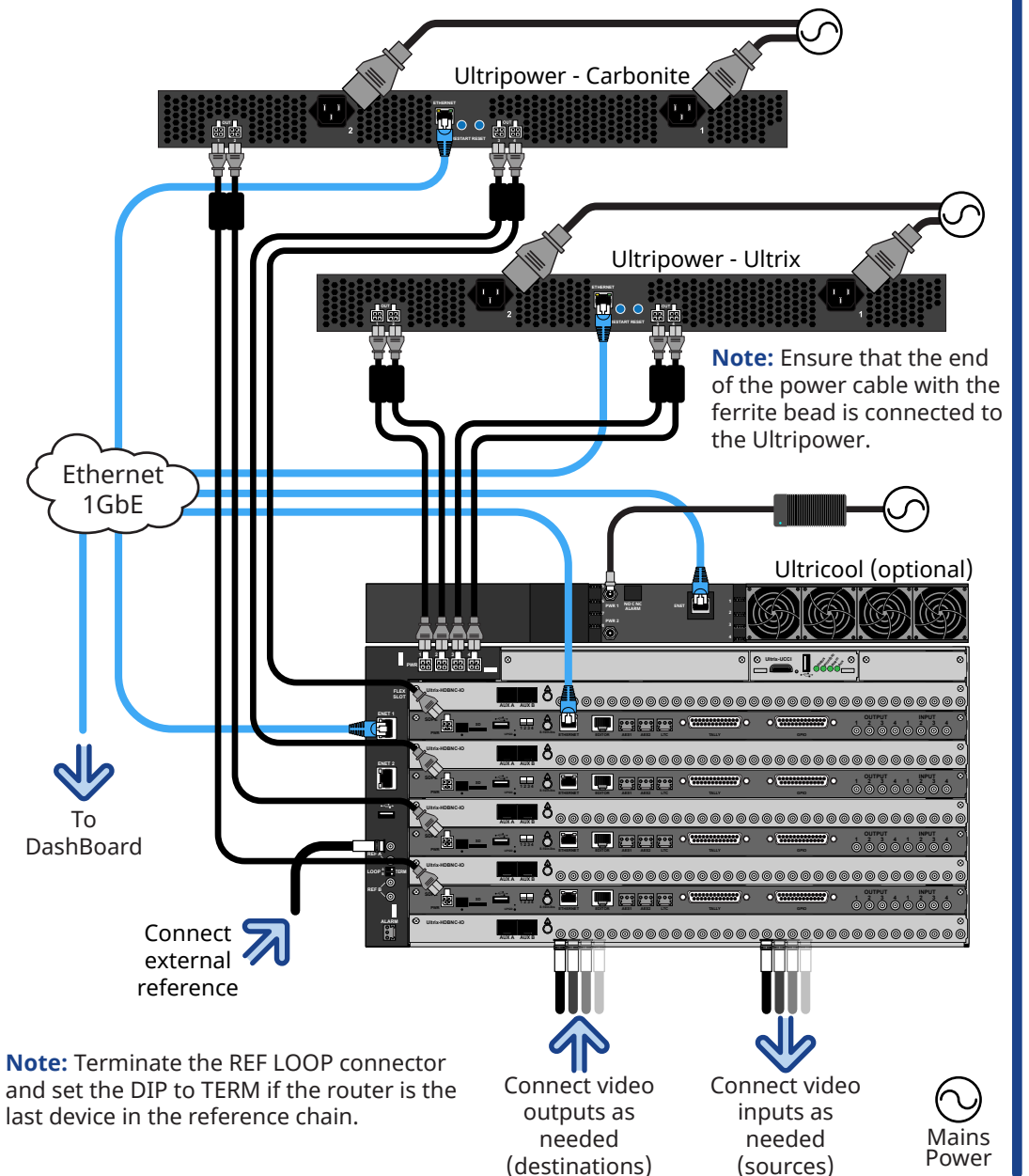


Tally (female DB25)		GPI I/O (female DB25)	
Pin	Tally	Pin	Signal
1	Tally 1	1	GPI I/O 1
2	Tally 2	2	GPI I/O 2
3	Tally 3	3	GPI I/O 3
4	Tally 4	4	GPI I/O 4
5	Tally 5	5	GPI I/O 5
6	Tally 6	6	GPI I/O 6
7	Tally 7	7	GPI I/O 7
8	Tally 8	8	GPI I/O 8
9	Tally 9	9	GPI I/O 9
10	Tally 10	10	GPI I/O 10
11	Tally 11	11	GPI I/O 11
12	Tally 12	12	GPI I/O 12
13	Tally 13	13	GPI I/O 13
14	Tally 14	14	GPI I/O 14
15	Tally 15	15	GPI I/O 15
16	Tally 16	16	GPI I/O 16
17	Tally 17	17	GPI I/O 17
18	Tally 18	18	GPI I/O 18
19	Tally 19	19	GPI I/O 19
20	Tally 20	20	GPI I/O 20
21	Tally 21	21	GPI I/O 21
22	Tally 22	22	GPI I/O 22
23	Tally 23	23	GPI I/O 23
24	Tally 24	24	GPI I/O 24
25	Common	25	Ground

Power and Cabling

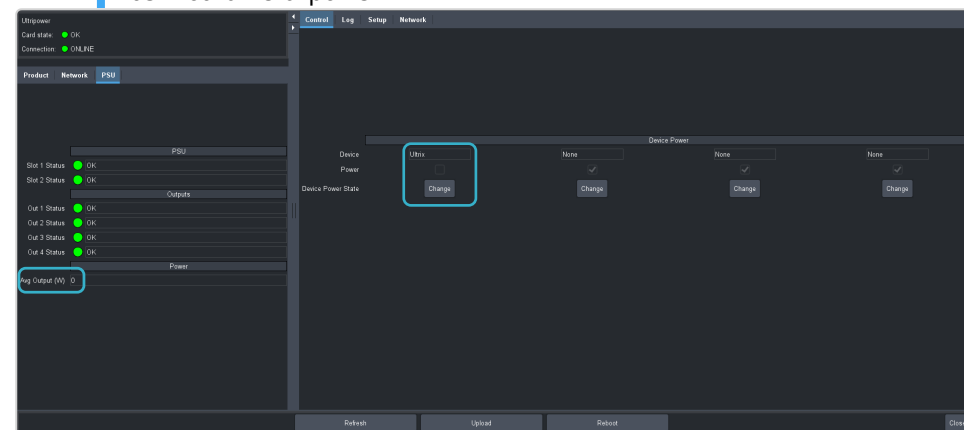
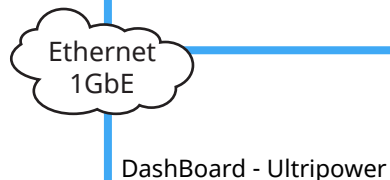
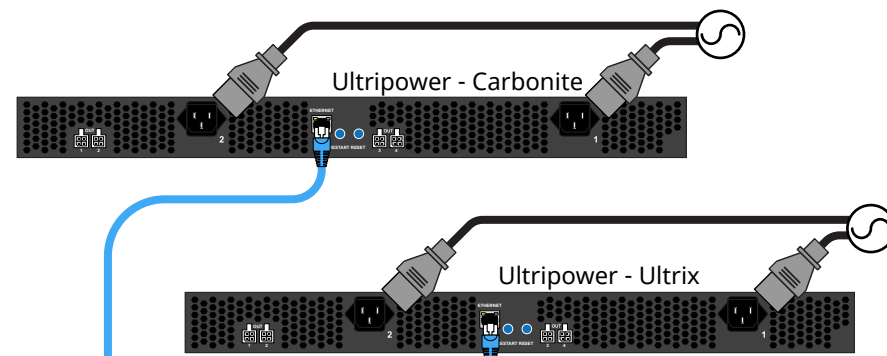
Read the instruction manual for your Ultripower and Ultrix FR5 or Ultrix FR2 before starting work or operating equipment.

NOTICE The Ultrix frame and SDPE blades do not have power switches. Ensure that the Ultripower is not connected to mains power before connecting the power cables from the Ultripower to the other components. If the Ultripower is energized as you connect the power cables to the Ultrix and SDPE, the system could start to power up before it has enough power to operate and could damage the equipment.



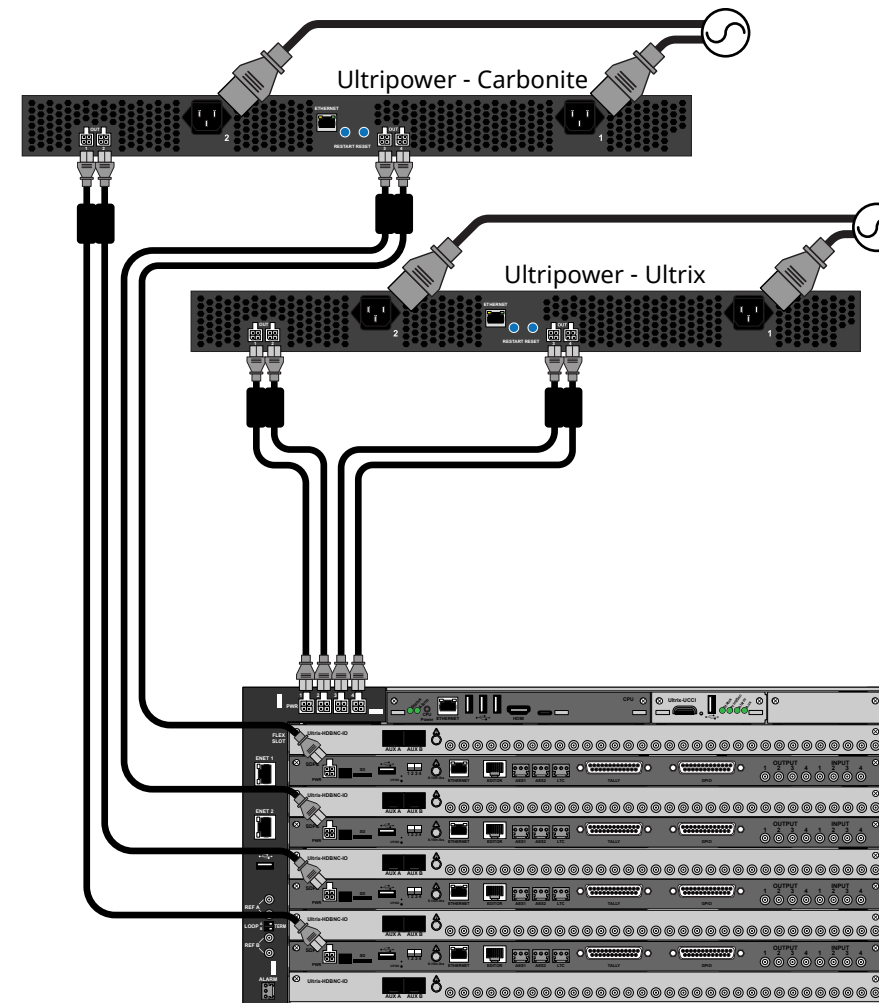
1 Ultripower Connection

1. Connect an Ultripower unit to mains power.
Important: Do *NOT* connect them to the SDPE blades.
2. Connect to one of the Ultripower units from Dashboard.
3. Click **Change** in the **Device Power State** to turn the power off.
4. Wait for the **Avg Output (W)** to go to 0.
5. On the **Setup** tab, name the first power supply *Ultrix* and assign all the power supplies to that label.
6. Repeat for the other Ultripower and name it *Carbonite* for each blade.



2 Ultrix Carbonite Power Connection

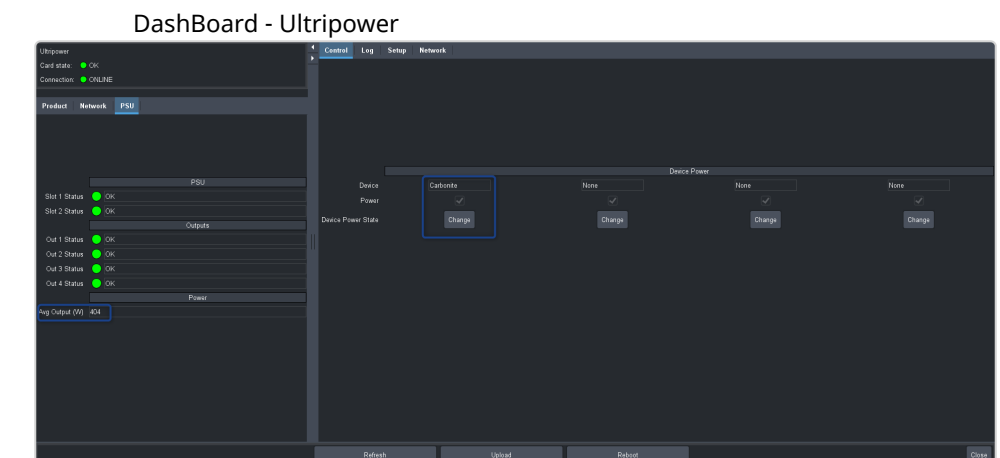
1. Connect the *Ultripower - Carbonite* to the SDPE blades.
2. Connect the *Ultripower - Ultrix* to the Ultrix.



3 Ultrix Carbonite Power Up

1. Connect to the *Ultripower - Carbonite* in Dashboard.
2. Click **Change** in the **Device Power State** to turn the power on.
3. Wait for the **Avg Output (W)** to rise and stabilize. It should only take a few seconds.
4. Connect to the *Ultripower - Ultrix* in Dashboard.
5. Click **Change** in the **Device Power State** to turn the power on.
6. Wait for the **Avg Output (W)** to rise and stabilize. It should only take a few seconds.
7. The Ultrix Carbonite should be booting up safely now.

Note: To power down the Ultrix Carbonite, power down the *Ultripower - Ultrix* first and then the *Ultripower - Carbonite*.



? Having a problem? Call our free, 24-hour technical support hotline to speak with a live product specialist located right here in our facility.

Tel (North America): 1-844-652-0645
Tel (International): +800 1005 0100
Email: techsupport@rossvideo.com

