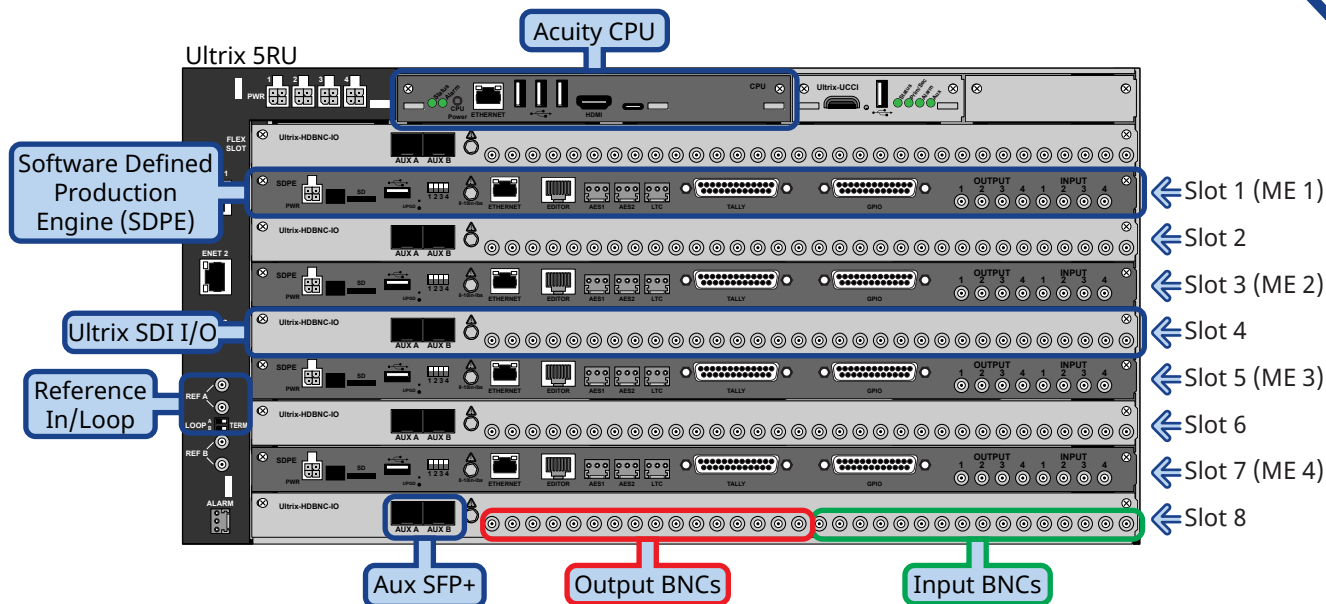


Ultrix 5RU Frame

NOTICE Adequate ventilation within a rack frame must be maintained. Ensure side to side ventilation is not compromised. Refer to the Ultrix Installation Guide for more information.

Notes:

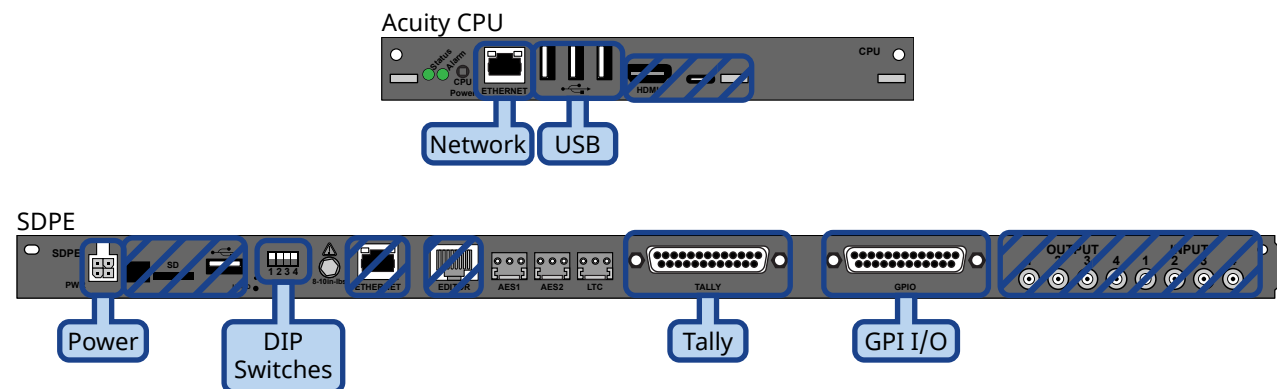
- The Ultrix 5RU frame supports the Acuity switcher platform with up to 4 MEs.
- The switcher uses the Reference input to Ultrix for timing.
- All 4 power supplies must be connected to operate the switcher.
- The Input and Output HD-BNCs on the SDPE blade are not used at this time.
- Physical sources and destinations on the router must be mapped internally to inputs and outputs on the switcher.
- The Ultrix SDI I/O blade is used to provide the sources and destinations that the switcher can access.
- The REF B connection is not supported at this time.
- A 1GbE ethernet connection is required for Ultrix.
- An Ultricool may be required, depending on your installation.



Acuity Switcher

Notes:

- The switcher is made up of a single Acuity CPU board, and a number of SDPE blades. Each SDPE blade provides a single HD/UHD ME.
- The number of SDPE blades a system can have depends on the size of the Ultrix frame and the other blades that are installed.
- Only the Ethernet port on the Acuity CPU card can be used to connect to the Acuity software.
- The Ethernet, USB, SD, and Input/Output HD-BNCs on the SDPE blade are not used at this time.
- The GPI and Tally ports on each SDPE blade are independent of each other. As you add more SDPE blades, each ME has an independent set of GPIs and Tallies.



CAUTION! Electrical shock hazard. The Power connector (PWR) must always be disconnected when the SDPE blade is not installed in the frame.

Not Used at this time.



Tally
(female DB25)

Pin	Tally	Pin	Tally
1	Tally 1	14	Tally 14
2	Tally 2	15	Tally 15
3	Tally 3	16	Tally 16
4	Tally 4	17	Tally 17
5	Tally 5	18	Tally 18
6	Tally 6	19	Tally 19
7	Tally 7	20	Tally 20
8	Tally 8	21	Tally 21
9	Tally 9	22	Tally 22
10	Tally 10	23	Tally 23
11	Tally 11	24	Tally 24
12	Tally 12	25	Common
13	Tally 13		

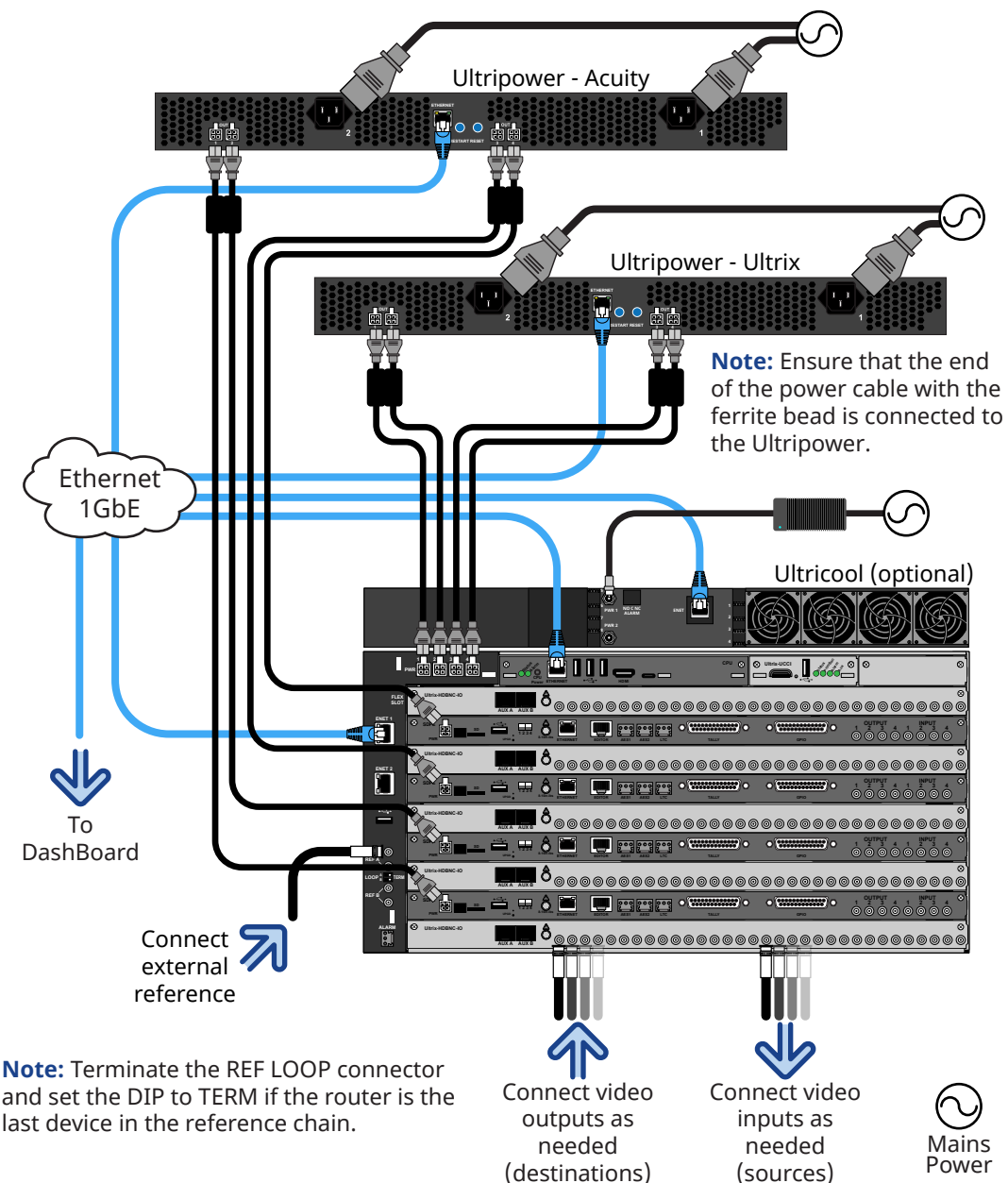
GPI I/O
(female DB25)

Pin	Signal	Pin	Signal
1	GPI I/O 1	14	GPI I/O 14
2	GPI I/O 2	15	GPI I/O 15
3	GPI I/O 3	16	GPI I/O 16
4	GPI I/O 4	17	GPI I/O 17
5	GPI I/O 5	18	GPI I/O 18
6	GPI I/O 6	19	GPI I/O 19
7	GPI I/O 7	20	GPI I/O 20
8	GPI I/O 8	21	GPI I/O 21
9	GPI I/O 9	22	GPI I/O 22
10	GPI I/O 10	23	GPI I/O 23
11	GPI I/O 11	24	GPI I/O 24
12	GPI I/O 12	25	Ground
13	GPI I/O 13		

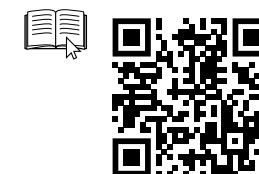
Power and Cabling

Read the instruction manual for your Ultripower and Ultrix FR5 before starting work or operating equipment.

NOTICE The Ultrix frame and SDPE blades do not have power switches. Ensure that the Ultripower is not connected to mains power before connecting the power cables from the Ultripower to the other components. If the Ultripower is energized as you connect the power cables to the Ultrix and SDPE, the system could start to power up before it has enough power to operate and could damage the equipment.

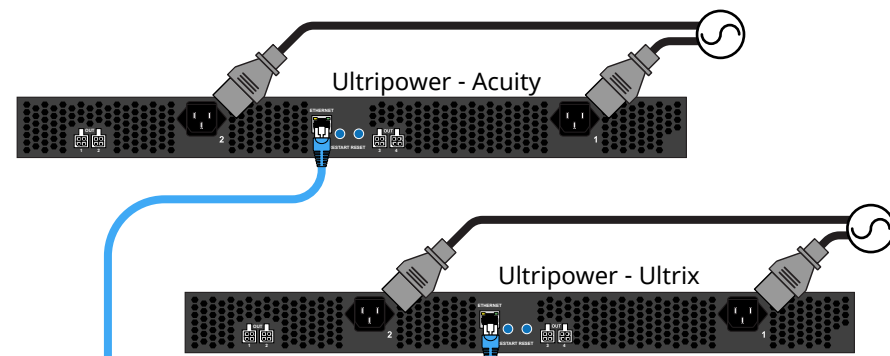


Note: Terminate the REF LOOP connector and set the DIP to TERM if the router is the last device in the reference chain.

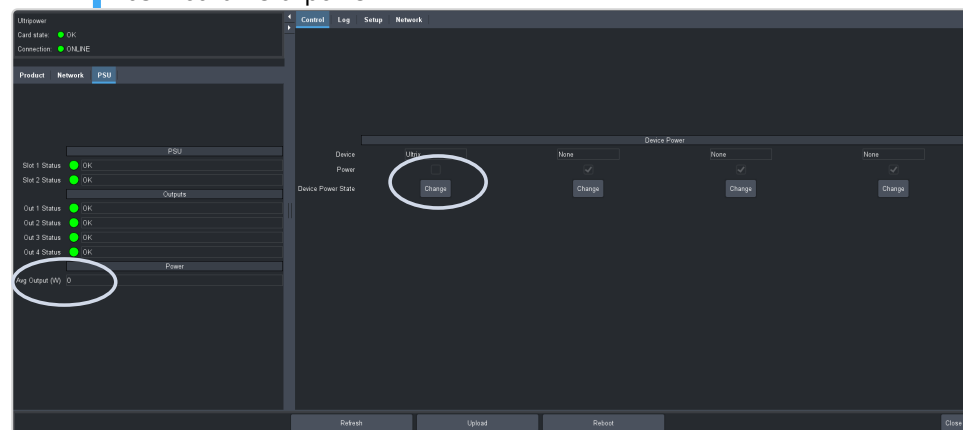


1 Ultripower Connection

1. Connect an Ultripower unit to mains power.
Important: Do *NOT* connect them to the Ultrix Acuity.
2. Connect to one of the Ultripower units from DashBoard.
3. Click **Change** in the **Device Power State** to turn the power off.
4. Wait for the **Avg Output (W)** to go to 0.
5. On the **Setup** tab, name the first power supply *Ultrix* and assign all the power supplies to that label.
6. Repeat for the other Ultripower and name it *Acuity*.

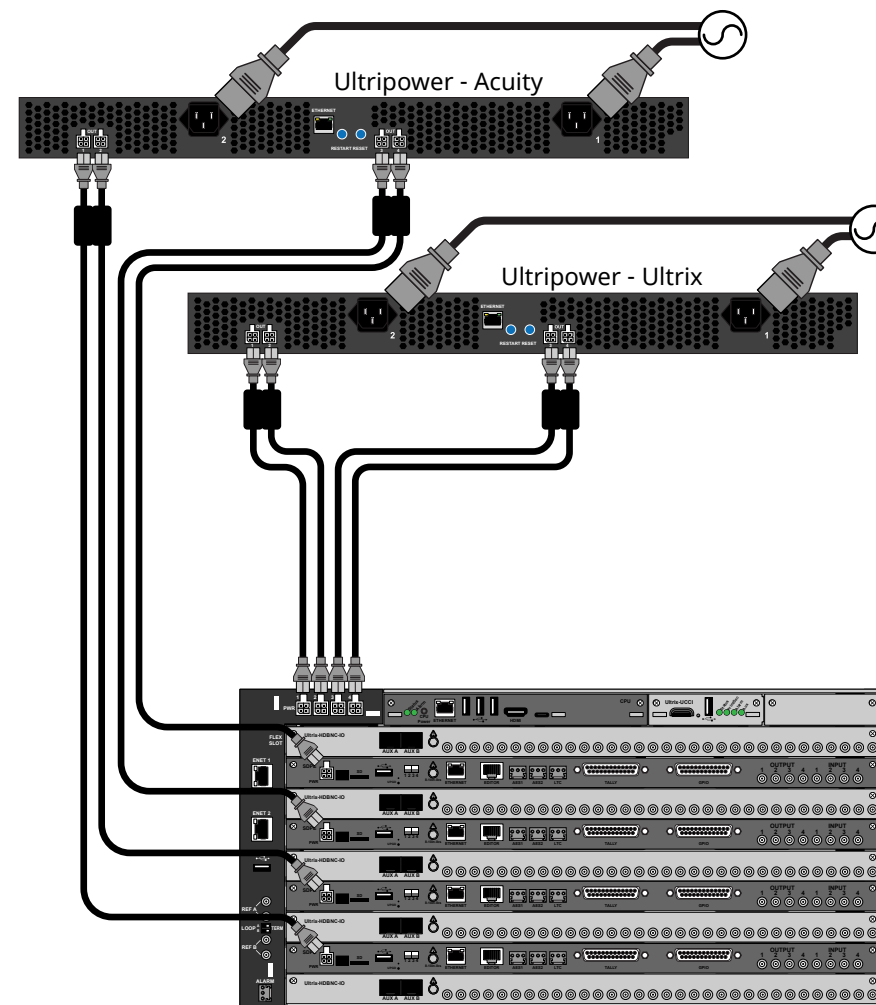


DashBoard - Ultripower



2 Ultrix Acuity Power Connection

1. Connect the *Ultripower - Acuity* to the SDPE blades.
2. Connect the *Ultripower - Ultrix* to the Ultrix.

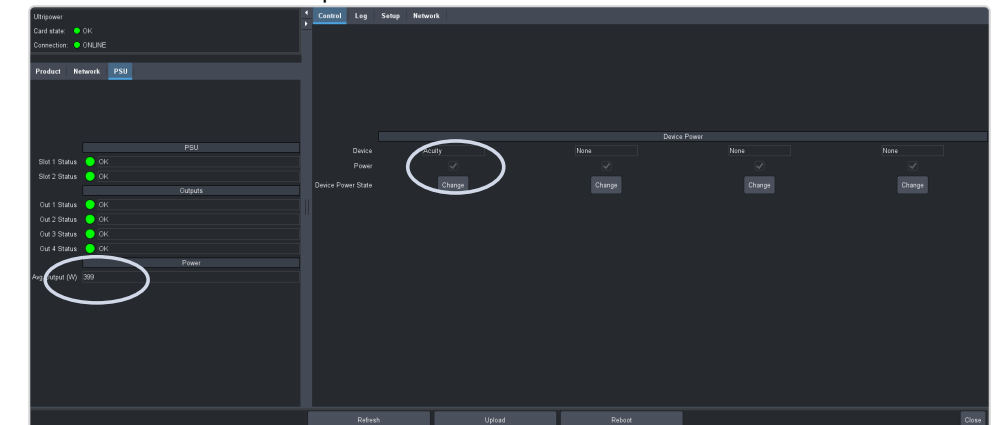


3 Ultrix Acuity Power Up

1. Connect to the *Ultripower - Acuity* in DashBoard.
2. Click **Change** in the **Device Power State** to turn the power on.
3. Wait for the **Avg Output (W)** to rise and stabilize. It should only take a few seconds.
4. Connect to the *Ultripower - Ultrix* in DashBoard.
5. Click **Change** in the **Device Power State** to turn the power on.
6. Wait for the **Avg Output (W)** to rise and stabilize. It should only take a few seconds.
7. The Ultrix Acuity should be booting up safely now.

Note: To power down the Ultrix Acuity, power down the *Ultripower - Ultrix* first and then the *Ultripower - Acuity*.

DashBoard - Ultripower



? Having a problem? Call our free, 24-hour technical support hotline to speak with a live product specialist located right here in our facility.

Tel (North America): 1-844-652-0645
Tel (International): +800 1005 0100
Email: techsupport@rossvideo.com

