



Professional switching, simplified.

Carbonite Ultra Solo is a UHD production switcher that is designed to deliver professional switching in a compact and cost-effective package.

No matter its size or scope, live video production is demanding. The compact and powerful Carbonite Ultra Solo shares the same professional toolset as its larger counterparts, allowing operators to confidently create compelling, eye-catching content with ease.

Distinct advantages



Small size, solid performance

Carbonite Ultra Solo offers exceptional production capability in a compact, affordable footprint, making it an ideal choice for flypacks, space-constrained production facilities or mobile units.



Best in breed

Carbonite has been the leading mid-size production switcher line for over a decade. Carbonite Ultra Solo brings this much-loved switcher's legendary performance and ease of use to the small switcher market, enabling even modest-size facilities to benefit from a tradition of excellence.



Built to perform, built to last

Like all Ross products, Carbonite Ultra Solo is manufactured in Ross Video's facility and is rigorously tested to provide robust, trouble-free performance. Carbonite Ultra Solo's all-metal construction and high-quality components ensure that it is show-ready the first time, and every time.

Getting Started

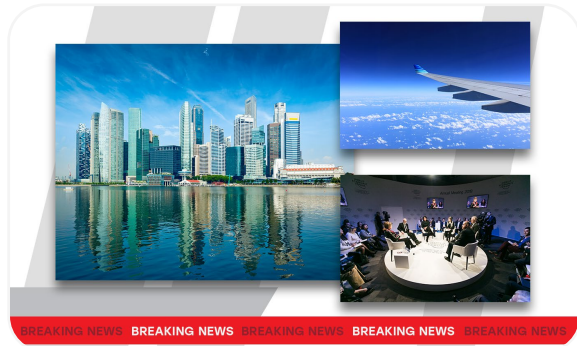
Choose the option that suits your needs best—
Carbonite Ultra Solo is available in two different form factors:



An all-in-one system that incorporates the frame and control surface electronics in a single compact unit.

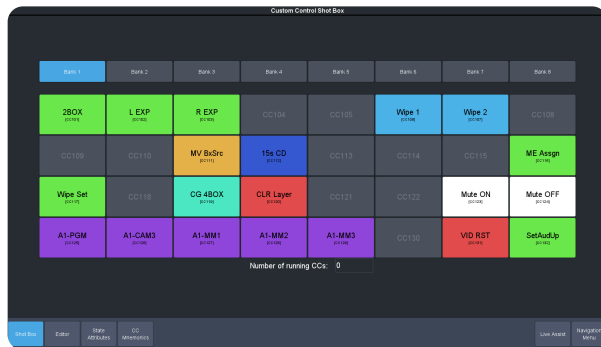


A 1RU frame that can be controlled by separate hardware or a software-based control panel.



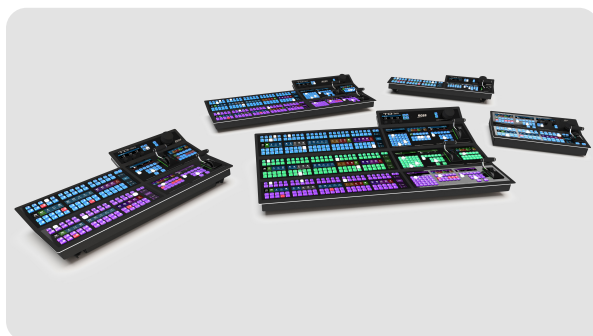
Flexible ME resources

Carbonite Ultra Solo's powerful ME bank and two independent MiniMEs for added transition and layering capacity allow even complex effects to be managed easily and confidently. The full ME provides six keyers while the MiniMEs, with two independent keyers each, are the perfect tools for feeding on-set monitors or IMAG displays.



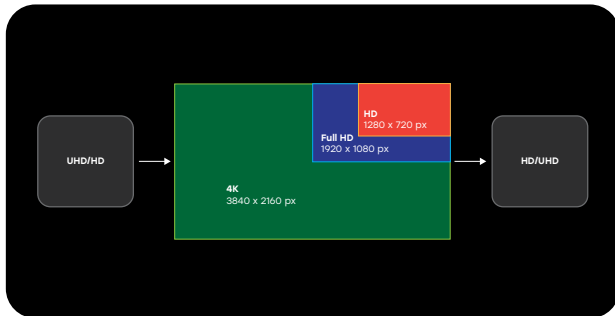
One-button control

Carbonite Ultra Solo features a powerful macro system that allows operators to easily create customized events for controlling switcher operations and external devices. Its on-board memory system with flexible store and recall functionality provides simple, one-button access to operator-built effects.



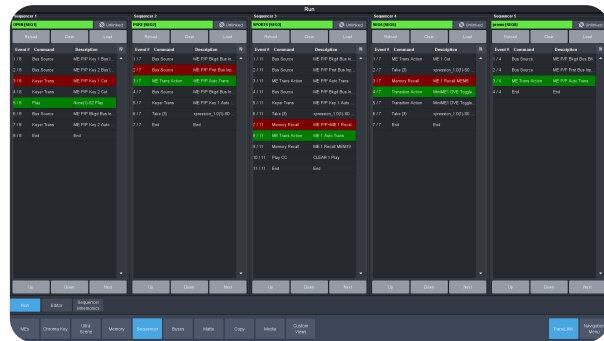
Multiple control options

Carbonite Ultra Solo is fully compatible with the TouchDrive™ line of physical Control Panels that literally put most switcher operational parameters at the operator's fingertips. In addition, Dashboard extends configuration and control of Carbonite Ultra Solo to any network-connected computer, making remote system monitoring or multi-user operations simple.



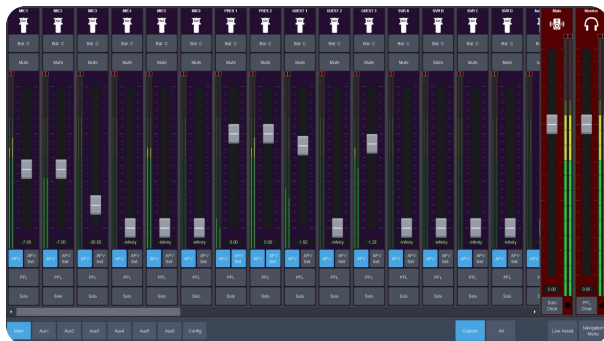
Future ready

Carbonite Ultra Solo is designed to meet a facility's current and future needs by fully supporting both HD and UHD operations. Input, output, ME and MiniME count are identical regardless of the switcher format making Carbonite Ultra Solo a worry-free platform for growth.



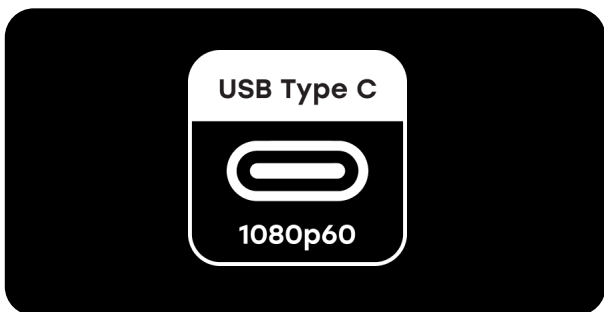
Production sequencer

Production Sequencer is a simple but powerful tool to assist operators with repeatable elements within a live production. In addition to Memory or Custom Control macro operations, the Sequencer allows operators to link a series of tasks, events or device controls together for simple, reliable and repeatable playback.



Audio mixer evolved

Carbonite Ultra Solo's included RAVE audio mixer provides a professional toolset for audio processing, mixing, and routing.



USB webcam

Carbonite Ultra Solo is the first Ross production switcher to incorporate a webcam output for conferencing or live streaming applications. This provides a means to easily integrate a user-selected switcher output with third-party streaming applications. The USB Webcam feature will be included at no extra cost in a future software release.

Hardware	HD	UHD
SDI Inputs	12	12
Input Frame Sync / Format Converters	6	6
Input Proc Amp / Color Correctors	6	--
SDI Outputs	5	5
Output Format Converters	5	2
Output Proc Amp / Color Correctors	5	--
UVC USB-C Webcam Output	Included	Included
Full ME Banks	1	1
Independent Key Layers per Full ME	6	6
Transition / Media Keyers per Full ME	1	1
MiniME Banks	2	2
Independent Key Layers per MiniME	2	2
MultiViewer with Shift mode	1	1
DVE Channels	4	2
Ultrachrome™ Chroma-Keyers	2	1
Mediastores (video or video/key)	4	2
Mediastore RAM Capacity	6GB	6GB
H.264 Clip Player w/audio	1	1**
Contact Closure Tallies	24	24
GPI/O	24	24
AES Audio Output	1	1
RAVE Audio Mixer License	Included	Included
Production Sequencers	Included	Included
Device Control	Included	Included
Memory System	Included	Included
Custom Control Macros	Included	Included
XPression LiveCG	Included	Included

*MediaStores 1 & 3 and 2 & 4 each share approximately 3GB

**HD media files upscaled using an onboard upconverter