

Upgrading XPression from Windows[®] 7 to Windows 10

★ Ross Video does not provide a Windows 10 license when upgrading from Windows 7. It needs to be purchased by the user.

This document explains how to upgrade a Ross Video turnkey Windows 7 Pro XPression to the Windows 10 operating system. It contains the following information:

- Supported Hardware
- Upgrade Instructions
- Testing XPression After Upgrading

Supported Hardware

M1 through M6 generations of XPression systems support the Windows 10 upgrade.

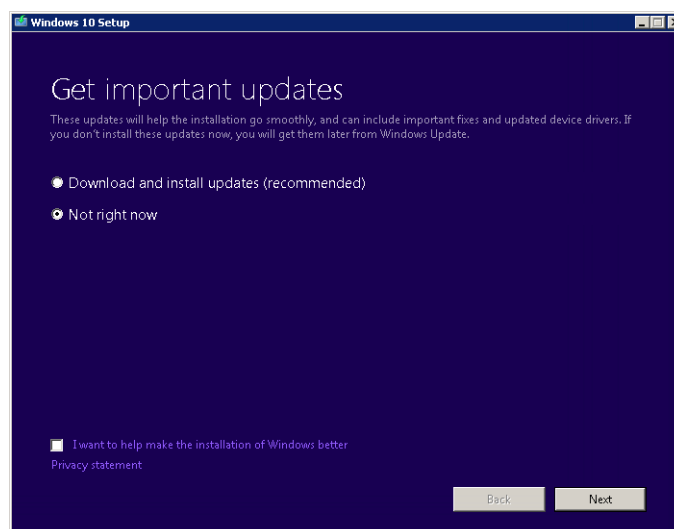
★ 16GB of RAM is recommended for Windows 10. The minimum amount is 8GB of RAM.

Upgrade Instructions

★ Perform a backup of all XPression media before performing the following Windows 10 install procedure.

★ Close and shutdown all running applications before installing Windows 10.

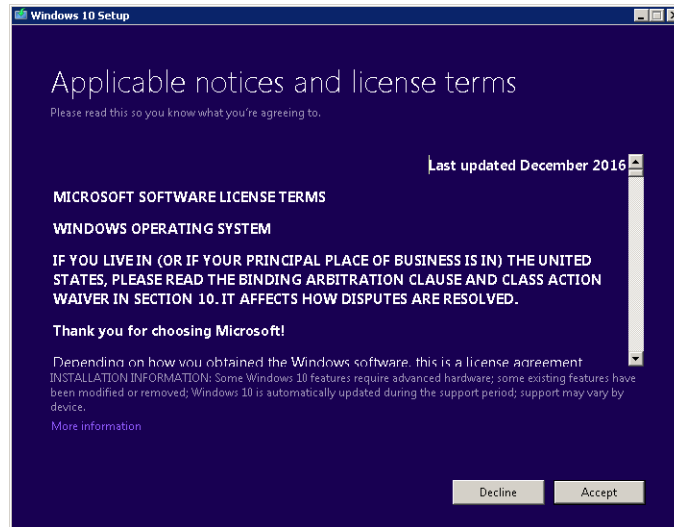
1. Insert the Windows 10 disc or USB stick into the machine.
2. Open the Windows 10 Media.
3. Double-click **Setup.exe**.
The **Windows 10 Setup** opens.
4. In the **Get important updates** window, select **Not right now**.



XPression

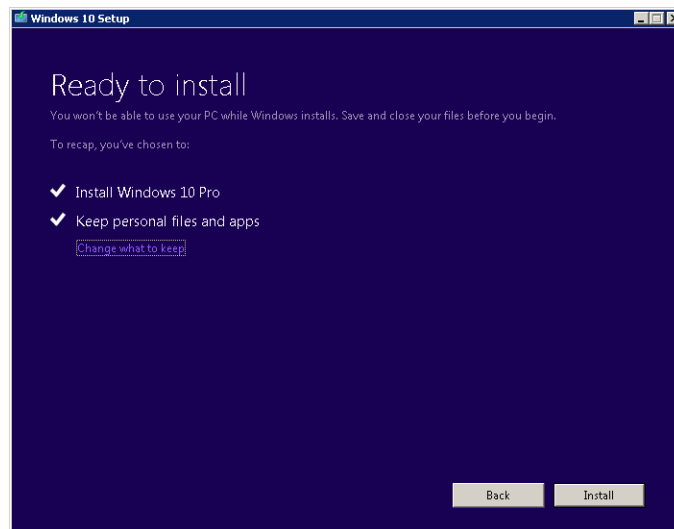
5. Click **Next**.

The **Applicable notices and license terms** window is displayed.



6. Click **Accept** to accept the applicable notices and licenses terms.

The **Ready to install** window is displayed.



7. Click **Install**.

An installation notification is displayed and Windows 10 begins to install.



XPression

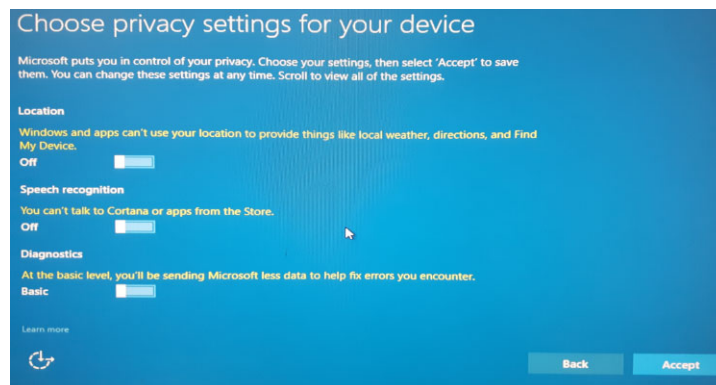
When the installation is complete, a welcome window is displayed.



8. Click **Next**.

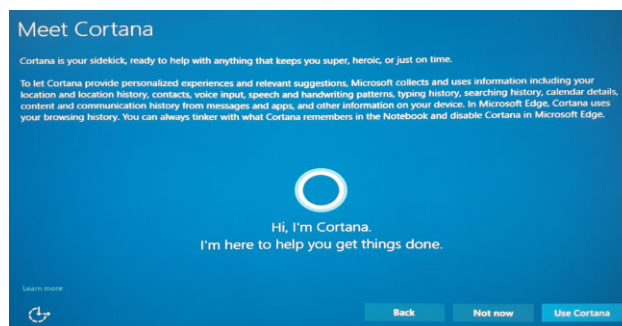
The **Choose privacy settings for your device** window is displayed. In this window:

- a. Slide the **Location** setting to **Off**.
- b. Slide the **Speech recognition** setting to **Off**.
- c. Slide the **Diagnostics** setting to **Basic**.



9. Click **Accept**.

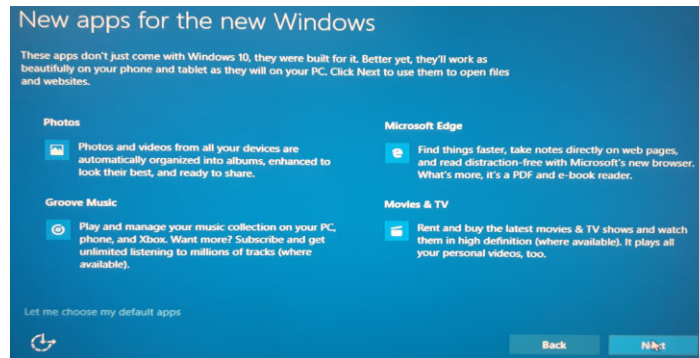
The **Meet Cortana** window is displayed.



XPression

10. Click **Not Now**.

The **New apps for the new Windows** window is displayed.



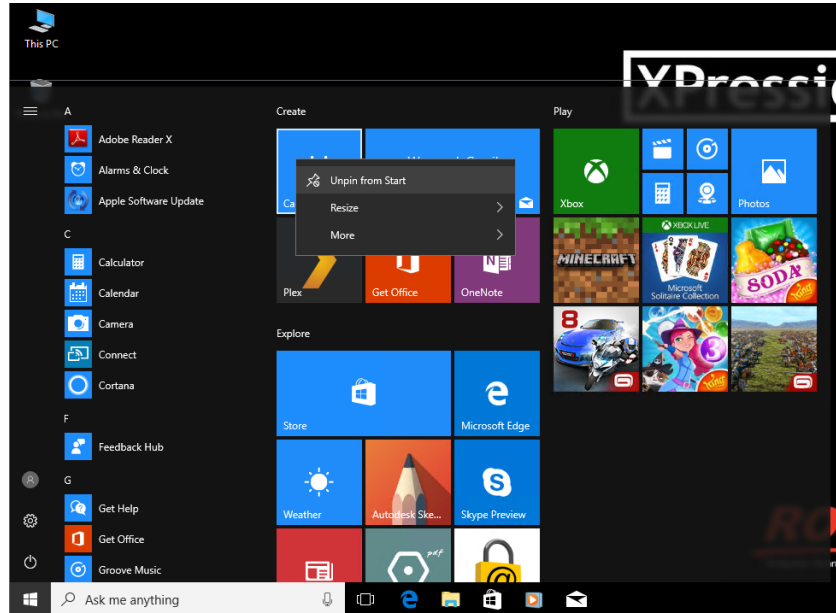
11. Click **Next**.

The Windows 10 login is displayed.

12. Login to the machine.

★ If there are any further Windows updates, they will install now.

13. In the **Start** menu, right-click on each individual app and program and select **Unpin from Start** until all apps and programs have been unpinned.



14. In the taskbar, right-click on **Mail**, **Windows Media Player**, and **Store** and select **Unpin from taskbar**.



XPression

15. Contact Ross Technical Support for the following:

- The latest NVIDIA driver, if necessary
- The WIN10Disable.reg file

NVIDIA Driver

If the machine requires an update to the latest XPression-approved NVIDIA driver, perform the following steps once obtained from Ross Technical Support:

a. Launch the driver installer.

After the system compatibility check, the **NVIDIA software license agreement** section is displayed.



b. Click **Agree And Continue** to accept the agreement.

The **Installation options** section is displayed.

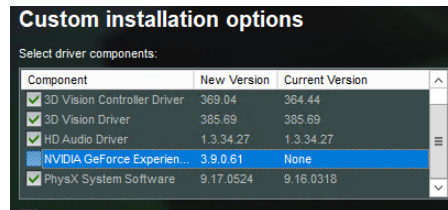


c. Select **Custom (Advanced)**.

d. Click **Next**.

The **Custom installation options** are displayed.

- e. De-select the **NVIDIA GeForce Experience** check box.



- f. Click **Next**.

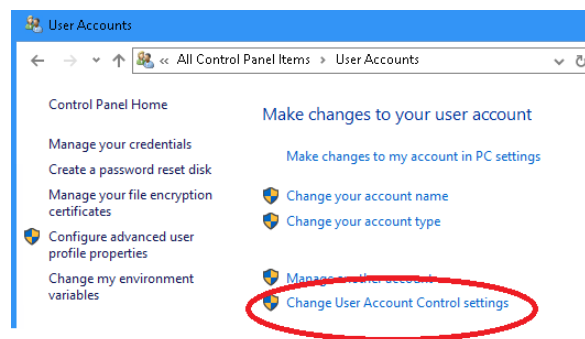
The installation begins.

- g. When the installation has completed, click **Close** to exit the NVIDIA Installer.

WIN10Disable.reg File

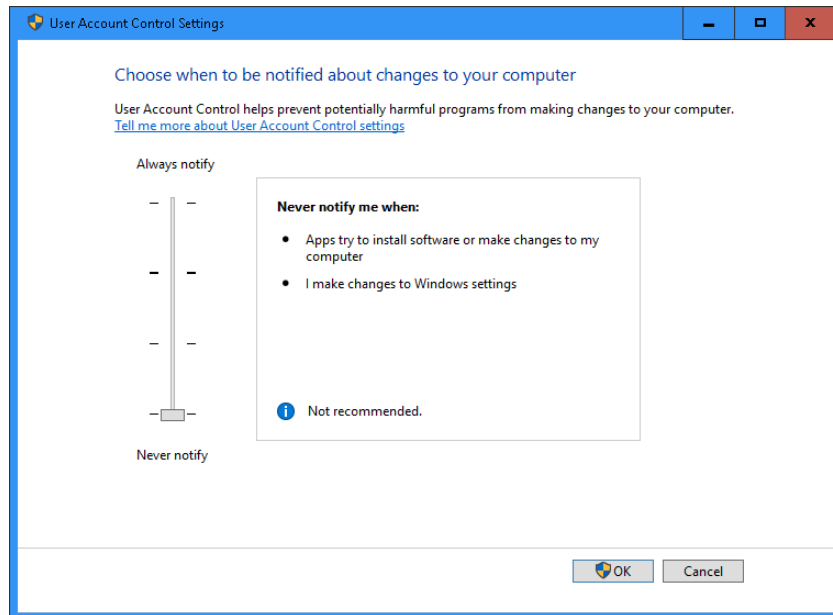
Once the WIN10Disable.reg file is obtained from Ross Technical Support, perform the following steps:

- Copy the **WIN10Disable.reg** file to the server.
 - Run the **WIN10Disable.reg** file. This will merge some registry settings that disable the Windows firewall, Windows Defender, OneDrive, and Cortana.
 - Restart the server.
 - Delete the **WIN10Disable.reg** installer.
16. Open **Control Panel > All Control Panel Items > User Accounts** to open the **User Accounts** panel.
17. Click **Change User Account Control settings**.



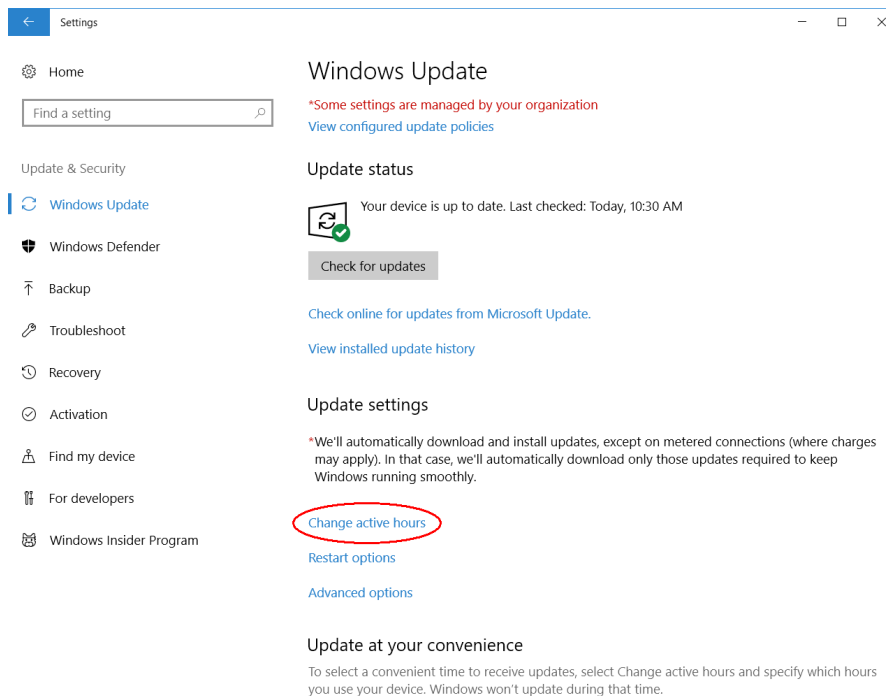
The **User Account Control Settings** open.

18. Set the notification level to **Never notify**.



It is recommended that the Windows Update settings be adjusted so that the updates do not conflict with the operation of XPression. To set the appropriate active hours of operation:

- a. From the **Start** menu, open **Settings**.
- b. Click **Change active hours**.



The **Active hours** window opens.

XPression

- c. Use the **Start time** and **End time** menus to select a period of time that XPression is typically in use so that the upgrades do not occur during hours of operation.
- d. Click **Save**.

19. Click **OK**.

Testing XPression After Upgrading

After the Windows 10 upgrade, launch XPression to test the application performance and operability. Open a project and run XPression to ensure it runs properly on the new operating system.