

# DASHBOARD RELEASE NOTES

Welcome to the DashBoard v9.16 Release Notes. Please read this document to find important information on areas of DashBoard that may not be covered in the User Guide or the User Help system.

## CONTENTS

<b>DASHBOARD RELEASE NOTES .....</b>	<b>1</b>
<b>UPGRADE CONSIDERATIONS .....</b>	<b>3</b>
<b>VERSION HISTORY .....</b>	<b>4</b>
VERSION 9.16 – JANUARY 2026.....	4
VERSION 9.15.1 – SEPTEMBER 2025 .....	6
VERSION 9.15 – JUNE 2025.....	6
VERSION 9.14.0 – MARCH 2025 .....	8
VERSION 9.13.0 – JANUARY 2025 .....	9
VERSION 9.12.0 – DECEMBER 2024.....	11
VERSION 9.10.3 – SEPTEMBER 2024 .....	13
VERSION 9.10.2 – AUGUST 2024 .....	13
VERSION 9.10.1 – JUNE 2024 .....	13
VERSION 9.10.0 – MAY 2024 .....	14
VERSION 9.9.1 – APRIL 2024 .....	16
VERSION 9.9.0 – MARCH 2024 .....	16
VERSION 9.8.1 – JANUARY 2024.....	18
VERSION 9.8.0 – DECEMBER 2023.....	18
VERSION 9.7.0 – SEPTEMBER 2023 .....	21
VERSION 9.6.1 – JULY 2023.....	24
VERSION 9.6.0 – JUNE 2023.....	24
VERSION 9.5.3 – MARCH 2023 .....	26
VERSION 9.5.2 – MARCH 2023 .....	26
VERSION 9.5.1 – DECEMBER 2022.....	27
VERSION 9.5.0 – NOVEMBER 2022.....	28
VERSION 9.4.1 – MAY 2022 .....	31
VERSION 9.4.0 – APRIL 2022 .....	31
VERSION 9.2.2 – DECEMBER 2021 .....	34
VERSION 9.2.1 – APRIL 2021 .....	36
VERSION 9.2.0 – NOVEMBER 2020.....	37
VERSION 9.1.4 – OCTOBER 2020 .....	40
VERSION 9.1.3 – SEPTEMBER 2020 .....	40
VERSION 9.1.2 – AUGUST 2020.....	41

VERSION 9.1.1 – JULY 2020.....	42
VERSION 9.0.2 – MAY 2020 .....	46
VERSION 9.0.0 – APRIL 2020 .....	47
<b>KNOWN ISSUES</b> .....	<b>51</b>
<b>GETTING HELP</b> .....	<b>54</b>

## UPGRADE CONSIDERATIONS

The latest DashBoard upgrade considerations and important notices are listed below.

---

### IMPORTANT NOTICE for CUSTOMERS with ROSS VIDEO SERVERS

---

#### DEPENDENCY REQUIREMENT FOR 64-BIT WINDOWS

- If you are using the <browser/> tag on DashBoard running on a 64-bit Windows operating system, Microsoft's WebView2 Runtime must be present on the system. If it is not already installed, download it from the following link: <https://developer.microsoft.com/en-us/microsoft-edge/webview2/>

#### SUPPORT FOR 32-BIT OPERATING SYSTEMS

- DashBoard 9.5 and later will no longer be distributed on 32-bit operating systems.

#### ROLE-BASED ACCESS CONTROL REQUIREMENTS

- If you are using an RPM Server that is secured with HTTPS, future DashBoard upgrades will require manually adding the RPM Server certificate to DashBoard after the installation process is complete. The upgrade procedure can be found in the DashBoard Role-Based Access Control Guide (8351DR-04A-xxx).
- **Note:**  
For other considerations see the **DashBoard User Guide > System Requirements** section.

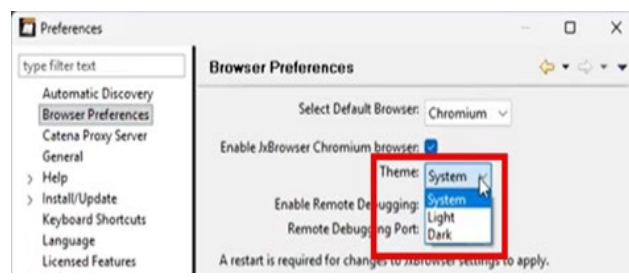
## VERSION HISTORY

### VERSION 9.16 – JANUARY 2026

#### WHAT'S NEW

- **DARK MODE SUPPORT FOR BROWSERS**

Users can now update their browser preferences so that browsers within CustomPanels will open in dark mode. This newly supported theme enhances usability in low-light environments, such as dark control rooms.



**Browser Theme Selection**

Users are now able to configure browser theme preferences within DashBoard Preferences.

- **SUPPORT FOR WEBCAM OGSCRIPT FUNCTIONS**

View Control developers can now use the following functions when integrating a webcam as a source in a panel:

- `webcam.getAvailableWebcams()`
- `webcam.getWebcamResolutions("webcam1")`
- `webcam.getActiveWebcam("webcam1")`
- `webcam.getHighestSupportedResolution("webcam1")`
- `webcam.getWebcamFillModes()`
- `webcam.setWebcamResolution("webcam1", "1920x1080")`
- `webcam.getWebcamResolution("webcam1")`
- `webcam.isWebcamInRegistry("webcam1")`
- `webcam.setWebcamSource("webcam1")`
- `webcam.closeWebcamSource("webcam1")`
- `webcam.setWebcamFillMode("webcam1")`

Further information on these functions can be found in the ***DashBoard CustomPanel Development Guide***.

- **NDI ENHANCEMENTS**

DashBoard now supports NDI® 6, allowing users to take advantage of the latest NDI innovations.

CustomPanel developers can leverage these new capabilities by continuing to use the NDI object when integrating NDI as a source in a panel. Further information on the NDI object and its functions can be found in the ***DashBoard CustomPanel Development Guide***.

- **JXBROWSER AND JDK UPDATES**

JxBrowser has been updated from version 7.41.3 to version 7.44.2.

The Java Development Kit has been updated to the latest version of Azul Zulu (8u472) on Windows and MacOS. Note that on Linux, the Java Development Kit being used is still a previous version, 8u402.

- **PTZ CAMERA CONTROLLER ENHANCEMENTS**

### **Support for Canon CR-N700 Camera**

- Store and recall presets from camera storage. Note that this is limited to the 100 presets available on the camera – DashBoard does not support recall of presets stored locally for the Canon PTZ cameras.
- Direct control of pan, tilt, zoom and focus.
- Basic paint control, such as:
  - Iris and gain control
  - Full control of ND filter.
  - Set white balance mode and adjust red gain, blue gain.
  - Note that for some paint settings (for example exposure and white balance modes), DashBoard is unable to access the full range of options available in the Web UI. Shutter control from DashBoard is not supported.
- VISCA gateway to enable control of a Canon CR-N700 camera from a serial VISCA controller such as Carbonite.
- Furio gateway to enable control of a Canon CR-N700 camera from a controller using the Furio API, such as SmartShell.
- Integration with DashBoard tally service to monitor and display the camera tally state.

## **BUGS ADDRESSED**

- Fixed an issue where DashBoard would send the display value instead of the actual value to DataLinq when sending STRING\_STRING\_CHOICE constraint. (DASH-5444)
- Fixed various display and rendering issues in Caprica Custom Controls View. (DASH-5492)
- Fixed an issue where DashBoard would fail to properly draw Graphite audio mixers. (DASH-5501)

## VERSION 9.15.1 – SEPTEMBER 2025

### WHAT'S NEW

- **ABILITY TO DECRYPT EXTERNAL APIS**

DashBoard can now ingest encrypted external APIs and script files. This means that CustomPanel developers are now able to decrypt external panel dependency files when developing new CustomPanels.

- **OTHER IMPROVEMENTS**

View-only users are no longer able to remove RPM from the tree view.

### BUGS ADDRESSED

- Fixed an issue where the NDI Panel's setImageWindow arguments were named incorrectly. (DASH-5350)
- Fixed an issue where users could not scroll horizontally on Ultritouch devices. (DASH-5376)

## VERSION 9.15 – JUNE 2025

### WHAT'S NEW

- **PTZ CAMERA CONTROLLER ENHANCEMENTS**

#### Support for Sony BRC-AM7 Camera

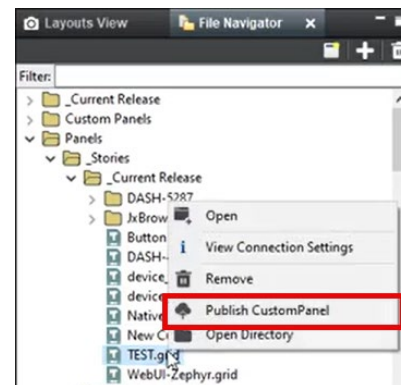
- Store and recall of presets both locally from DashBoard storage and from camera storage (note that when using DashBoard storage, only pan, tilt, zoom and focus will be stored and recalled).
- Direct control of pan, tilt, zoom and focus.
- Basic paint control, such as:
  - Iris control, Iris can be opened and closed, but position cannot be viewed or set directly.
  - Gain and shutter can be switched between automatic and manual mode, but cannot be set or viewed through DashBoard.
  - Full control of ND filter.
  - Set white balance mode and adjust red gain, blue gain and color temperature.
- VISCA gateway to enable control of a Sony BRC-AM7 camera from a serial VISCA controller such as Carbonite.
- Furio gateway to enable control of a Sony BRC-AM7 Camera from a controller using the Furio API, such as SmartShell.
- Integration with DashBoard tally service to monitor and display the camera tally state.

## Support for Panasonic Digest Authentication

**Note:** Before enabling Digest Authentication for Panasonic PTZ cameras already added to DashBoard, set the Username and Password for the camera on all DashBoard clients on the Config>Camera page. Enabling authentication before doing this can cause the camera to freeze up requiring a hard reset.

- **PUBLISH CUSTOMPANELS TO RPM DIRECTLY FROM DASHBOARD**

Users can now publish CustomPanels to RPM directly from within DashBoard's File Navigator by right clicking on the CustomPanel file and selecting Publish CustomPanel.



- **WILDCARD SUPPORT FOR PARAMS ONCHANGE EVENT WITH OID ATTRIBUTE IN OGSCRIPT**

The OID attribute in ogScript now supports wildcards for the params onchange event, enabling tasks to be triggered on multiple parameters which share a pattern.

- **SERVICE PANEL SUPPORT FOR ULTRITOUCH/FR12 DOOR**

Implemented support for product provided 'Service Panels' for Ultritouch/FR12 Door.

## BUGS ADDRESSED

- Fixed an issue where PTZ camera axis inputs sent through the Furio gateway caused the camera to continue to drift when the connection unexpectedly ended. (CI-942)
- Fixed an issue with XPression devices disappearing from the Basic Tree View and losing connection after DashBoard restarts. (DASH-5272)
- Fixed an issue where grids within Matrix panels would fail to load properly when first opened. (DASH-5274)
- Fixed an issue where the cursor would be unresponsive in source code windows and OGScript windows. (DASH-5285)
- Fixed an issue where MIDI controller connections with DashBoard would fail to sync properly with Carbonite Audio Mixer faders. (DASH-5287)
- Fixed an issue with parameter descriptor updates. (DASH-5288)
- Fixed an issue where the Catena Proxy Server was enabled by default on new installs of DashBoard. (DASH-5330)



## VERSION 9.14.0 – MARCH 2025

### WHAT'S NEW

- **WEBCAM VIDEO FEED WIDGET**

The DashBoard OGLML library now features a new <webcam> tag. This enhancement allows for seamlessly integrating any native webcam video feed directly into your custom control panels. This feature unlocks the full potential of the Carbonite Solo series by seamlessly integrating its USB-C webcam output with DashBoard. Use of the <webcam> tag is supported on Windows and Linux devices. Mac is not currently supported.

### BUGS ADDRESSED

- Fixed an issue where the floating navigation button would disappear when the web browser was set to Chromium. (DASH-5211)
- Fixed an issue where the XML parser was causing errors that lead to CustomPanels failing to load. (DASH-5194)
- Fixed an issue where refreshing an Ultrix device would occasionally lead to the UI getting stuck on the "Building" screen. (DASH-5188)
- Fixed an issue where Ultrix device UIs would take longer than expected to build. (DASH-5187)
- Fixed an issue where exceptions in the script table for Ultrix devices could cause issues with loading the UI. (DASH-5186)
- Fixed an issue where Ultrix device UIs would load, even if the device was offline or rebooting. (DASH-5184)
- Fixed an issue where the HTTP read timeout would cause Ultrix UIs to not load. (DASH-5176)
- Fixed an issue where text selection/highlighting was inconsistent in the source editor. (DASH-5175)
- Fixed an issue where fixed an issue where rebooting an OSG card would sometimes cause the configuration to be cleared. (DASH-5151)
- Fixed an issue where the WebGet "window" member would not always initialize properly. (DASH-5134)



## VERSION 9.13.0 – JANUARY 2025

### WHAT'S NEW

#### • PTZ CAMERA CONTROLLER ENHANCEMENTS

##### **Support for Panasonic AW-UE160 and AW-HR140 Cameras**

- Store and recall of presets both locally from DashBoard storage and from camera storage.
- Direct control of pan, tilt, zoom and focus.
- Basic paint control, such as:
  - Iris control. Note the AW-HR140 does not provide an F-stop value to display.
  - Gain, Shutter, and ND Filter control, though only the Shutter Step can be controlled through DashBoard.
  - White balance mode, and adjusting red gain, blue gain, and color temperature. The AW-UE160 also supports adjusting green gain.
  - The AW-UE160 also supports setting the red, blue, and green gain for the AWB A and AWB B white balance modes.
- VISCA gateway to enable control of a Panasonic PTZ camera from a serial VISCA controller such as Carbonite.
- Furio gateway to enable control of a Panasonic PTZ Camera from a controller using the Furio API, such as SmartShell.
- Integration with DashBoard tally service to monitor and display the camera tally state. Note that the AW-HR140 does not have a tally light on the camera itself.
- The AW-HR140 includes Wiper control which can be accessed from the Presets, PTZ, and Config pages of the UI.

**Note:** If you are already controlling an AW-UE160 in DashBoard using the AW-UE150 controller and wish to switch to the new AW-UE160 controller, see the [Transferring Panasonic AW-UE150 Presets to an AW-UE160 \(8351DR-018-9.1\) app note](#) for instructions as to how to transfer your existing presets.

## PTZ Polling

An option to turn on periodic polling for PTZ cameras so that changes made to the camera by controllers other than DashBoard can be reflected in the DashBoard UI. This feature generates a lot of message traffic, so is disabled by default. If using during regular operation, test in your environment to ensure that the message traffic is not disrupting other controllers talking to the cameras. Camera polling is not supported for the Pivot-SE.

### Camera Polling Period

Off

30 secs

1 min

5 mins

## BUGS ADDRESSED

- Fixed an issue where modifications to the database could lead to the Java Runtime Environment encountering a fatal error. (DASH-5133)

## VERSION 9.12.0 – DECEMBER 2024

### WHAT'S NEW

#### • CATENA SUPPORT

DashBoard 9.12 now supports a beta version of Catena standard. Catena is a new standard that makes it easy to secure, connect and control a multi-vendor ecosystem of on premises and cloud-based media processing services and microservices.

For more information on Catena, please visit: <https://www.rossvideo.com/catena/>

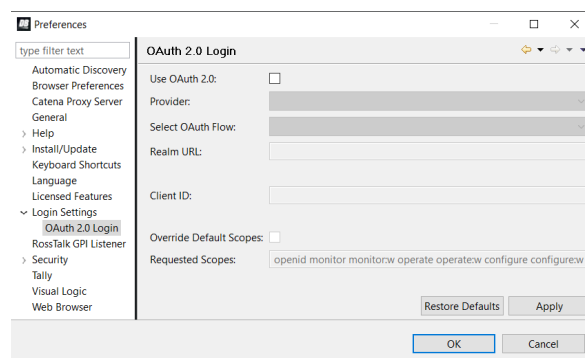
#### Catena Devices

Catena devices can now be operated within DashBoard.

#### OAuth 2.0 Login

Users can now configure OAuth 2.0 login settings within the DashBoard Preferences. Once configured, users can log in via OAuth 2.0 either through a browser on the same device or by using another device with a camera to scan a QR code.

By setting up OAuth 2.0 login, it can be used as an authorization tool to control which functions a user can perform. Administrators can define user profiles with specific scopes, granting different levels of access to perform various functions.



#### OAuth 2.0 Login

Users are now able to configure OAuth 2.0 login settings within DashBoard Preferences.

#### Multi-Language Support

Catena devices can be run with the parameter names displayed in English, French, or Spanish. If the language selection is changed within the INI file, the panel must be closed and reopened for the translation to take effect.

#### OID Alias Support

All parameters can now have OID aliases which can be added at any time. Previously, a side-loaded XML file defining all aliases was required, and they were only usable by parameters with integer OIDs.

#### • CUSTOMPANEL LICENSING IMPROVEMENTS

Various improvements relating to CustomPanel licensing including:

- The **Host Name** field on the Software Based Licensing tab under Preferences > Licensed Features is now validated to prevent users from being able to add an invalid value.
- UI improvements under Preferences > Licensed Features.

## • JDK AND JXBROWSER UPDATES

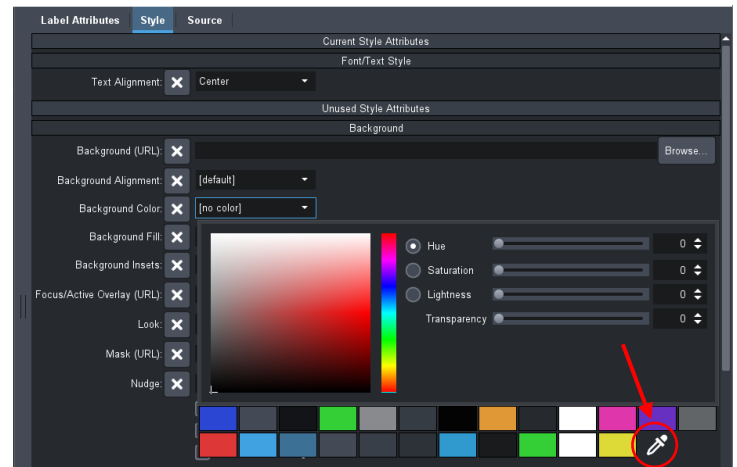
JxBrowser has been updated from version 7.37.1 to version 7.41.3.

The Java Development Kit has been updated to the latest version of Azul Zulu on Windows and Linux. Note that on MacOS, the Java Development Kit being used is still a previous version, 8u362.

## • OTHER ENHANCEMENTS

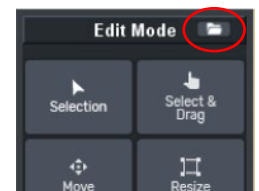
- On Windows devices, users can now use the Eyedropper tool to select a color from any visible screen when selecting a color for something in a CustomPanel.

Note that the Eyedropper tool is disabled if the scale does not match for all displays being used. If the Eyedropper icon does not appear on your Windows device, go to Windows Settings > System > Display and ensure all displays have the same scale.



Eyedropper Tool

- A confirmation dialog now displays when exiting the DashBoard Proxy Server.
- A CustomPanel File Location button is now located at the top right of the Edit Mode toolbar. This button opens the exact location of the source file for an open CustomPanel.
- Users can now use both "." and "/" separators when looking up parameters. Previously, only "." separators could be used.
- Graphics can now be directly embedded into a CustomPanel using the <externalobjects> tag using two new attributes: **encoding** and **zip**.



CustomPanel File Location Button

## BUGS ADDRESSED

- Fixed an issue where the Ultrascap Layout Editor for Ultrix would render incorrectly on Mac devices. (DASH-5127)
- Fixed an issue where testing the connection of a software based license with an invalid host name would incorrectly display as a successful connection. (DASH-4847)
- Fixed an issue where the keyboard would appear on Ultritouch devices despite being disabled. (DASH-2960)
- Fixed an issue where NDI|HX streams were not visible in DashBoard from PTZ NDI and PTZ 12G+ outputs. (DASH-4981)

## VERSION 9.10.3 – SEPTEMBER 2024

### BUGS ADDRESSED

- Addressed issues with DashBoard's performance when running on UltriTouch, including long transition times between panel loads when using CustomPanels, and slow push button responsiveness. (DASH-5034)
- Fixed an issue being caused by the UltriTouch DashBoard INI file. (DASH-5035)
- Reverted the Java Development Kit to a previous version to address web socket functionality issues and compatibility issues with Ultrix devices. (DASH-5043)

## VERSION 9.10.2 – AUGUST 2024

### BUGS ADDRESSED

- Fixed an issue where switching the license server type for licensed features would result in an incorrect number of current activations. (DASH-4886)
- Fixed an issue where relaunching DashBoard with multiple product keys would result in being unable to re-license a feature. (DASH-4887)
- Fixed an issue where licensing would fail if any GET requests failed. (DASH-4900)
- Fixed an issue where DashBoard would not iterate over product keys for activation when the initial set of keys did not have license availability. (DASH-4902)
- Updated the Java Development Kit to the latest version of Azul Zulu to address security vulnerability. (DASH-4999)

## VERSION 9.10.1 – JUNE 2024

### BUGS ADDRESSED

- Fixed an issue where the `rosstalk.sendMessage` command would not release its connection. (DASH-4959, DASH-4960)
- Updated the Java Development Kit to the latest version of Azul Zulu to address security vulnerabilities. (DASH-4782)

## VERSION 9.10.0 – MAY 2024

### WHAT'S NEW

- NEW AND CHANGED ROSSTALK COMMANDS FOR GROUPS**

Several changes to the names of RossTalk commands for groups to fix issues introduced in v9.9.0. These changes are outlined in the table below.

**NOTE: If you were using any of these RossTalk commands before, you must update them to use the new command names for them to execute.**

Old Command	New Command
<b>sendMessage</b> String [Group], String [Host], Int [Port], String [RossTalk Command]	<b>sendMessageToGroup</b> String [Group], String [Host], Int [Port], String [RossTalk Command]
<b>sendMessage</b> String [Group], String [Host], Int [Port], String [RossTalk Command], Function [Callback]	<b>sendMessageToGroup</b> String [Group], String [Host], Int [Port], String [RossTalk Command], Function [Callback]
<b>sendMessageWithResponse</b> String [Group], String [Host], Int [Port], String [RossTalk Command], String [responseTerminator], Function [Callback]	<b>sendMessageWithResponseToGroup</b> String [Group], String [Host], Int [Port], String [RossTalk Command], String [responseTerminator], Function [Callback]
<b>sendAsBytes</b> (String [Group], String [Host], Int [Port], String [Bytes as Hex String])	<b>sendAsBytesToGroup</b> String [Group], String [Host], Int [Port], String [Bytes as Hex String]
<b>sendAsBytes</b> String [Group], String [Host], Int [Port], String [Bytes as Hex String], Function [Callback]	<b>sendAsBytesToGroup</b> String [Group], String [Host], Int [Port], String [Bytes as Hex String], Function [Callback]
<b>sendAsBytesWithResponse</b> String [Group], String [Host], Int [Port], String [Bytes as Hex String], String [responseBytes], Function [Callback]	<b>sendAsBytesWithResponseToGroup</b> String [Group], String [Host], Int [Port], String [Bytes as Hex String], String [responseBytes], Function [Callback]
<b>sendBytes</b> String [Group], String [Host], Int [Port], byte[] [Data to Send], Function [Callback]	<b>sendBytesToGroup</b> String [Group], String [Host], Int [Port], byte[] [Data to Send], Function [Callback]
<b>sendBytesWithResponse</b> String [Group], String [Host], Int [Port], byte[] [Data to Send], Byte [responseTerminator], Function [Callback]	<b>sendBytesWithResponseToGroup</b> String [Group], String [Host], Int [Port], byte[] [Data to Send], Byte [responseTerminator], Function [Callback]

- **PTZ CAMERA CONTROLLER ENHANCEMENTS**

### **Support for Ross PTZ-12G+**

The PTZ Camera Controller in DashBoard now supports the new Ross PTZ-12G+ camera. The PTZ-12G+ controller includes all the existing features for the Ross PTZ-12G and PTZ-NDI.

### **PTZ Motion Sync Support for Ross PTZ Cameras**

Enabling and disabling **PTZ Motion Sync** has been added to the **Config -> Camera -> Camera Options** panel for Ross PTZ-12G+, PTZ-12G, and PTZ-NDI cameras. Enabling Motion Sync means that pan, tilt, and zoom axes will be synchronized when recalling presets that are stored on the camera. Presets stored locally in DashBoard will still be recalled on a per-axis basis.

### **All Audio Controls Enabled for Ross PTZ-NDI Cameras**

All audio controls have been made available for PTZ-NDI cameras since **NDI|HX** video can be disabled in the web interface, and this allows **Audio Delay** and **Audio Encoding/Sample Rate** to be set. These controls will have no effect if **NDI|HX** is enabled on the camera.



## VERSION 9.9.1 – APRIL 2024

### BUGS ADDRESSED

- Fixed a preexisting issue where opening the All Connections tree tab would result in high CPU usage on Ultritouch devices. (DASH-4890)

## VERSION 9.9.0 – MARCH 2024

### WHAT'S NEW

#### CUSTOMPANEL LICENSING ENHANCEMENTS

##### Software Based Licensing

Added the ability to license CustomPanels and built-in camera plugins using Ross Platform Manager or Ross Video Online Activation. The Software Based Licensing tab is accessed via **Window > Preferences > Licensed Features**, and displays any licensed product keys and associated features along with their information.

##### Grace Period for Licensed Features

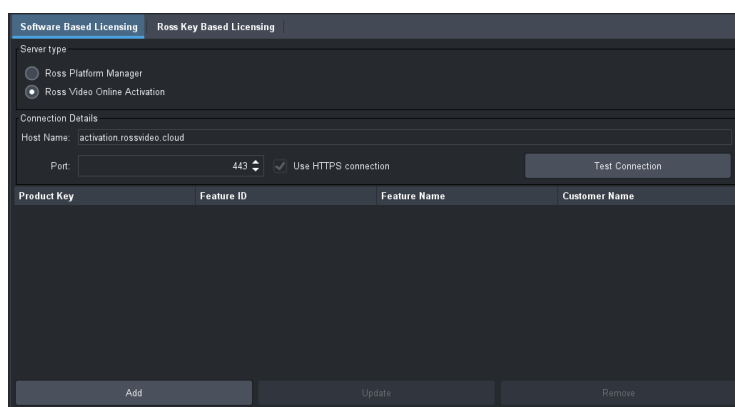
Each CustomPanel has a grace period of 7 days that will allow the licensed feature to continue working if DashBoard can no longer connect to the licensing server. If DashBoard does not regain a connection to the licensing server within the 7 day grace period, the licensed feature will be disabled until DashBoard can verify the licenses validity. Note that tampering with the system clock of your computer will automatically end the grace period.

##### Connectivity Issues Notification

If DashBoard loses connection to the licensing server (either Ross Platform Manager or Ross Video Online Activation) a notification will appear in the title bar alerting the user that the connection has been lost.

##### Ultritouch Support

Users are also able to use Software Based Licensing in Ultritouch mode.



##### Software Based Licensing

Users can now license CustomPanels using Ross Platform Manager and Ross Video Online Activation.

## Continued Ross Key Based Licensing Support

Ross Key Based Licensing is still supported and upgrading to DashBoard 9.9 will not cause previously licensed features to become unlicensed.

When accessing an unlicensed Ross Key Based feature previously, the licensing page would display immediately and allow for the user to configure the licensing details. Now, an error message will display in place of the licensed feature, and you will need to configure the licensing details on the Ross Keys Based Licensing tab (accessed via **Window > Preferences > Licensed Features**).

- **ROSTALK ENHANCEMENT**

Added a new RossTalk.sendMessage function that users can use to send multiple RossTalk messages simultaneously.

- **PTZ CAMERA CONTROLLER ENHANCEMENTS**

### Preset Validation

A new option has been added to the PTZ Camera Controller for Sony and Panasonic cameras to allow disabling of Preset Validation. Preset Validation ensures that all required data has been collected before storing a preset, but can cause problems when trying to use the PTZ Camera controller with camera models that are not explicitly supported. When Preset Validation is disabled, DashBoard will store a preset even if all required data has not been collected, without failing or showing a warning. It is the responsibility of the user to ensure that all necessary data has been stored so that the preset can be recalled satisfactorily.

## BUGS ADDRESSED

- Fixed an issue where DashBoard would become unresponsive when scrolling on Ultrix SoftPanels on a Mac device. (DASH-4816)
- Fixed an issue where the selected row in License Management on Ultritouch would appear white. (DASH-4749)
- Fixed an issue where folder nodes would sometimes appear as draggable leaf nodes when searched in Visual Logic sidepanels. (DASH-4697)
- Fixed an issue where the DashBoard and Ross Video logos would display upside down on launch on MacOS 14.1. (DASH-4671)
- Fixed an issue where DashBoard would become unresponsive when opening Device UIs, CustomPanels, and the Preferences menu on certain installations of MacOS. (DASH-4670)

## VERSION 9.8.1 – JANUARY 2024

### BUGS ADDRESSED

- Fixed an issue where Panel setting data via combo boxes on Ultrix would load and update incorrectly. (DASH-4756)
- Updated JxBrowser binaries used to address security vulnerabilities. (DASH-4767)
- Updated Java Runtime Environment used to address security vulnerabilities. (DASH-4768)

## VERSION 9.8.0 – DECEMBER 2023

### WHAT'S NEW

- **CONTEXT MENU AVAILABLE FOR JXBROWSER**

Added a context menu that appears when a JxBrowser element widget is right clicked. The context menu allows you to navigate backwards and forwards, refresh the page, and access dev-tools through the Inspect option.

- **OTHER ENHANCEMENTS**

- Updated JxBrowser binaries used to address security vulnerabilities.
- Updated ogScript palette to include missing ogScript functions.
- Right clicking an element while in PanelBuilder Edit Mode now allows you to delete the selected element.

- **PTZ CAMERA CONTROLLER ENHANCEMENTS**

#### **Support for Canon CR-X300**

The PTZ Camera Controller in DashBoard now supports the Canon CR-X300 camera. The CR-X300 controller includes all the features included in the Canon CR-N300 and CR-N500 camera controllers added in DashBoard 9.5, but also adds support for the camera wiper functionality. Wiper control is available on the Presets and PTZ pages of the UI.

To control the camera wiper from DashBoard, it is necessary to configure an HTTP connection to the camera in addition to the VISCA connection. Once you have added the camera, go to the Config->Camera page to configure the HTTP connection, and enable wiper control.

#### **Support Confirm Control Takeover in SmartShell 6.1a**

SmartShell 6.1a includes a new feature to show a dialog prompt before taking control of a robot from another client. This release upgrades the Furio Gateway for PTZ Camera Control to enable the Confirm Control Takeover feature to be used when controlling PTZ cameras

from SmartShell. Changes add the ability to support station names and to request, rather than force, takeover of joystick control.

### **Set port when adding a Panasonic AW-UE150 Camera**

The Add New Camera wizard for the Panasonic AW-UE150 now offers an option to set a port other than 80. The port selected must match the port configured on the camera itself. Note that it is not possible to change the port for a camera already added to DashBoard – the camera must be removed and re-added with the new port. Contact Ross technical support for assistance with transferring presets and other camera settings when removing and re-adding a camera to change the port.

The ability to set the port for a Panasonic AW-UE150 Camera is now supported on Ultritouch mode.

### **Additional paint parameters for Sony BRC-X1000**

Extra paint parameters have been added to the Sony BRC-X1000 camera controller for use in custom panels. These parameters are not exposed in the PTZ Camera UI.

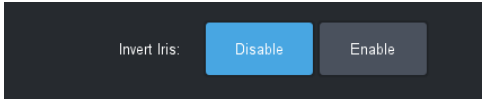
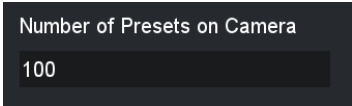
## **BUGS ADDRESSED**

### **DASHBOARD**

- Fixed an issue where INT CHOICE parameters using a Combo Box would allow invalid text to be entered. (DASH-4660)
- Fixed an issue where the Browser Type dropdown menu in inset ABS components would not close properly. (DASH-4642)
- Fixed an issue where selecting JavaFX in the DashBoard preferences or for a <browser/> tag would result in the incorrect browser being used on Windows and MacOS. (DASH-4639)
- Fixed an issue where OGP Binary devices would create duplicate constraint objects. (DASH-4629)
- Fixed an issue where the prompt to automatically restart would not appear when changing JxBrowser preferences. (DASH-4628)
- Fixed an issue where the scroll pane was not functioning correctly in Touch Mode. (DASH-4609)
- Fixed an issue where resizing a scrollable browser panel would leave the browser component outside of the DashBoard window on Mac OS X. (DASH-4586)
- Fixed an issue where having multiple JavaFX browsers open could cause an SWT exception when closing DashBoard. (DASH-4583)
- Fixed an issue where the New TCP/IP DashBoard Connect/openGear Device wizard would not display all the text. (DASH-4532)

- Fixed an issue where sliders in the Table Cell Attributes tab would not have transparent backgrounds. (DASH-2929)
- Fixed an issue where the Background Alignment of a component would incorrectly display as Top/Right when selected as Bottom/Right. (DASH-2576)

## CAMERA MOTION SYSTEMS

- Iris control through the Furio Gateway was previously inverted, so that it did not work with the default configuration in SmartShell. This has now been corrected and the default SmartShell configuration will now work with PTZ Cameras controlled through the Furio gateway. Customers upgrading from earlier versions of DashBoard, who may have already reconfigured SmartShell to compensate for the iris axis inversion, can use the **Invert Iris** button in the Furio Gateway configuration page in DashBoard to revert to behavior in DashBoard 9.7 and earlier. (CI-789)
 
- The PTZ Camera Config->Operation page now limits the **Number of Presets on Camera** setting so that it cannot be increased above the number of presets that can be stored on the camera. Previously a higher number could be set, which would have caused presets to fail to recall when set to Recall from Camera. **Number of Presets on Camera** can still be set to a value lower than the number of presets that can be stored on the camera to limit the number of DashBoard presets that are linked to camera storage. The **DFLT** button will now reset **Number of Presets on Camera** to the number supported by the camera. (CI-788)
 
- The AE level slider on the paint page of the Sony ILME-FR7 controller has been greyed out to make it clearer that it is read-only. AE level can be controlled using the up/down buttons, but not the slider, which indicates where the current setting sits within the available range of values. (CI-801)

## VERSION 9.7.0 – SEPTEMBER 2023

### WHAT'S NEW

- **NEW CUSTOMPANEL TEMPLATE (SIDESHOT NG) FOR SHOTBOXUI**

Added an option to create a new CutomPanel File with a 4x8 grid of push buttons as a preset template. These buttons can be used as a placeholder and can be replaced with whatever suits your needs.

- **NEW ATTRIBUTES TO EXPLICITLY SET BROWSER ENGINE IN <BROWSER/> TAGS**

Added two new browser attributes.

- The **Type** attribute allows you to select the browser engine that is used.
- The **Fallback** attribute allows you to enable browser fallback, which will result in a fallback browser type being used if the selected browser type is unsupported.

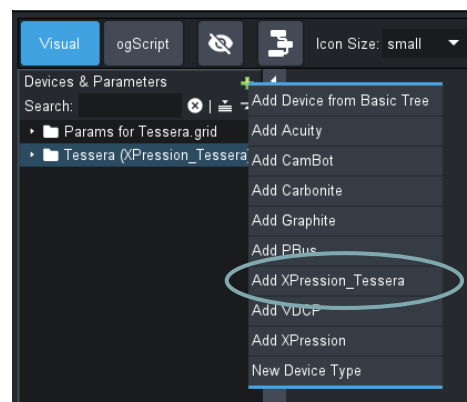
- **VISUAL LOGIC NOW SUPPORTS TESSERA COMMANDS**

Added ability for Visual Logic to support Tessera commands.

- **PTZ CAMERA CONTROLLER ENHANCEMENTS**

#### Support for Sony ILME-FR7

- The PTZ Camera Controller in DashBoard now supports Sony ILME-FR7 cameras, including the following features:
  - Store and recall of presets both locally from DashBoard storage and from camera storage (note that when using DashBoard storage, only pan, tilt, zoom and focus will be stored and recalled)
  - Direct control of pan, tilt, zoom and focus
  - Basic paint control, such as:
    - Iris can be opened and closed, but position cannot be viewed or set directly
    - Gain and shutter can be switched between automatic and manual mode, but cannot be set or viewed through DashBoard
    - Full control of ND filter
    - Set white balance mode and adjust red gain, blue gain and color temperature



#### Visual Logic Supports Tessera Commands

Support for XPression Tessera commands is now available directly within Visual Logic.



- VISCA gateway to enable control of a Sony ILME-FR7 camera from a serial VISCA controller such as Carbonite
- Furio gateway to enable control of a Sony ILME-FR7 camera from a controller using the Furio API, such as SmartShell
- Integration with DashBoard tally service to monitor and display the camera tally state

## Blind Recall of presets not stored in DashBoard

An option for **Blind Shot Recall** has been introduced on all supported PTZ camera models. When enabled, DashBoard allows recall of presets from the camera when no data is stored in DashBoard local storage. Note that if no data is stored for the preset on the camera, recall will fail silently.

This option can be found in the **Operation** tab of the **Config** page.

## Store Presets on Camera

The **Manage Presets on Camera** setting has been renamed to **Store Presets on Camera** but is functionally the same.

## Indication when presets will be stored or recalled from camera storage

The presets page of the PTZ Camera Controller for all camera models has been enhanced to indicate which presets are linked to presets stored on the camera, and when storing and recalling will use camera storage.

- In **panel** mode
  - Store button text will change to **Store on Camera** to indicate when a preset will be stored both on the camera and locally.
  - Recall button text will change to **Recall From Camera** to indicate a preset will be recalled from camera storage.
  - Shading indicates presets that currently don't have data stored in DashBoard but are linked to camera storage.
- In **shotbox** mode
  - In **Recall** mode, purple shading will indicate any presets with no data stored locally where **Blind Shot Recall** from camera is available.
  - In **Store** mode, yellow shading will indicate any presets with no data stored locally, where storing will cause data to be stored on camera as well as locally.

## Color temperature slider for Panasonic AW-UE150

The PTZ Camera Controller for the Panasonic AW-UE150 now includes a slider to set the color temperature of the camera when it is in VAR mode.



## BUGS ADDRESSED

### DASHBOARD

- Fixed an issue where tree popups appeared to have a border when the background colour was set. (DASH-2973)
- Fixed an issue where a duplicate API block named Fast Move was appearing for CamBots. (DASH-3050)
- Fixed an issue where dragging and dropping tree items on to a web page was crashing DashBoard on Linux. (DASH-3496)
- Fixed an issue where users were unable to delete components if there was an embedded component on a custom panel. (DASH-4063)
- Fixed an issue where JxBrowser widgets were not rendering in the proper location after the URL was changed. (DASH-4479)
- Fixed an issue with the On Screen Keyboard where hitting enter added a space. (DASH-4498)
- Fixed an issue where modified data from an Ultritouch would not stream back to DashBoard. (DASH-4528)
- Fixed an issue where editing a CustomPanel hosted on a network drive would result in slow performance. (DASH-4553)
- Fixed an issue where joystick controls could not handle constraint updates without a rebuild. (DASH-4555)
- Fixed an issue where updating range constraints on parameters being displayed as text would trigger an unnecessary rebuild. (DASH-4576)
- Upgraded the JxBrowser library to utilize Chromium v117 to resolve a security vulnerability. (DASH-4603)

## THINGS TO NOTE

### • DASHBOARD USER GUIDE MISMATCH

The DashBoard User Guide (8351DR-004-9.7) indicates that when changes are made to browser preferences, the user will be prompted to automatically restart DashBoard. As of DashBoard 9.7, the user is required to manually restart DashBoard to apply any changes made to browser preferences

### • JAVAFX SELECTION ISSUE

Selecting JavaFX as the browser implementation in DashBoard preferences or directly in the <browser/> tag returns the incorrect browser type on Windows and MacOS. Use of this option should be avoided in DashBoard 9.7.0. (DASH-4639)

## VERSION 9.6.1 – JULY 2023

### BUGS ADDRESSED

- Fixed an issue where upgrading to DashBoard 9.6 causes DashBoard to malfunction on certain TouchDrive panels until a restart is performed. (DASH-4467)
- Fixed a resource leak that occurs when alarm parameters are used in tables. (DASH-4453)
- Fixed an issue where an Ultrix UI drop down list could not be closed. (DASH-4499)

## VERSION 9.6.0 – JUNE 2023

### WHAT'S NEW

- **JXBROWSER SUPPORT**

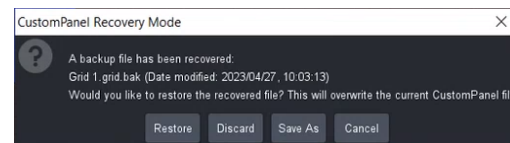
Support for JxBrowser, a modern browser widget, was added to DashBoard 9.6.

- **CUSTOMPANEL RECOVERY MODE**

DashBoard 9.6 is now equipped with the ability to recover unsaved CustomPanel files if DashBoard quits unexpectedly.

Whenever changes are made to a CustomPanel file, they are automatically saved to a .bak file alongside the original CustomPanel file. When the CustomPanel file is saved, the .bak file is automatically deleted.

When you enter edit mode for a CustomPanel file with an associated .bak file, DashBoard will enter CustomPanel recovery mode. You can choose to restore the unsaved changes, save the .bak file as a new CustomPanel, or discard the .bak file.



#### CustomPanel Recovery Mode

When you enter edit mode for an unsaved CustomPanel file after DashBoard quits unexpectedly, DashBoard will enter CustomPanel Recovery Mode.

- **NEW CUSTOMPANEL TEMPLATE FOR ULTRITOUCH-2-HR**

Added an option to create a new CustomPanel File with the Ultritouch-2-HR panel as a preset template.

- **SUPPORT FOR ADDING PTZ CAMERA TO DASHBOARD ON ULTRITOUCH MODE**

You are now able to add PTZ cameras directly to DashBoard on Ultritouch mode.

- **PAINT FUNCTIONALITY PARAMETERS**

Added parameters to expose additional paint functionality when controlling Sony BRC-H900 and Panasonic AW-UE150 PTZ cameras. These parameters are only available for use in custom panels and are not visible through the DashBoard PTZ Camera UI pages.

- **OPEN CUSTOMPANEL DIRECTORY FROM DASHBOARD**

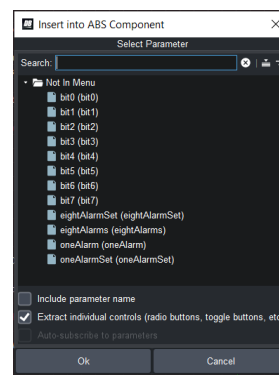
You can now open your operating system file directory directly to the location of your Custom Panel file by right clicking on the directory in the DashBoard tree and selecting **Open Directory**.

- **SEARCH FOR PARAMETERS VIEW**

Added a search bar in the Add Parameters window.

- **EXPAND/COLLAPSE IN PARAMETERS VIEW**

Added functionality to expand and collapse the list of parameters in the Add Parameters window.



## BUGS ADDRESSED

### DASHBOARD

- Fixed an issue where function blocks in visual logic were missing semicolons. (DASH-1572)
- Added a Show Layout View icon in the Layouts menu. (DASH-2773)
- Fixed a typo in the Advanced Tree View dropdown menu. (DASH-3069)
- Fixed an issue where Visual Logic nodes collapsed from their expanded size to their original size when a value was entered in a spinner field. (DASH-4166)
- Fixed an issue where the port entry field occasionally added commas to the port number. (DASH-4189)
- Fixed an issue impacting Mac OS users, where browser widgets sometimes overlapped nearby panels. (DASH-4292)
- Fixed an issue where misconfigured frame nodes caused the DashBoard tree to take a long time to populate. (DASH-4360)
- Fixed an issue where adding a horizontal-slider without a label caused DashBoard to crash. (DASH-4393)
- Addressed issues with the Advanced Tree Menu "Adding Subfolder" button functionality. (DASH-3065)
- Fixed an issue where DashBoard tabs stopped responding after an Ultra reboot. (DASH-4363)

- Fixed an issue where changing the font size only changed the tree row height for parameters with choice constraints and the widget hint tree. (DASH-2964)
- Fixed an issue where using DashBoard in Turkish language mode caused horizontal and vertical slider parameters to be rendered incorrectly. (DASH-4391)

## CAMERA MOTION SYSTEMS

- Fixed an issue where structured parameters were not properly cleaned up when they were deleted from a device. This could cause memory leaks which resulted in DashBoard CPU use spiking at 100% particularly when working with PTZ and PT Head camera plugins. (DASH-4439)

## VERSION 9.5.3 – MARCH 2023

### BUGS ADDRESSED

- Fixed an issue where upgrading to DashBoard 9.5.2 caused the TouchDrive installer to stall. (DASH-4348)
- Fixed an issue where upgrading DashBoard occasionally resulted in an unexpected error message being displayed after the first launch. (DASH-4358)
- Upgraded Apache Commons FileUpload version to 1.5 to resolve a security vulnerability. (DASH-4349)
- Fixed an issue where the Custom Colors color selector box did not appear in DashBoard versions 9.5.1 and 9.5.2. (DASH-4359)
- Addressed issues with nodes occasionally being duplicated or hidden in the advanced tree view. (DASH-4361) (DASH-4362)

## VERSION 9.5.2 – MARCH 2023

### WHAT'S NEW

- **OGSCRIPT COMMAND TO CHECK FOR RBAC-PERMISSION**

You can now check for RBAC permission using the OGscript command `params.isDeviceReadOnly()`. With this command, you can create a custom panel that automatically checks the permissions related to the user's role. The command can be programmatically tied into the custom panel functions, restricting or enabling access to particular functions for different roles.

- **ICON SIZE PROPERTY FOR ALARMS AND COLOURED DOT PARAMETERS**

You can now set a configuration for the icon size property of alarms and coloured dot parameters using the configuration property `w.iconsize`.

- **OGP-BINARY DEBUG CONSOLE IMPROVEMENTS**

The OGP-Binary Debug Console now shows the device initialization progress.

## BUGS ADDRESSED

- Optimized the Tally panel for Ultrix FR12 dimensions. (DASH-4276)
- Optimized the proxy server panel for Ultrix FR12 dimensions. (DASH-4277)
- Fixed an issue with the language selector on the Ultritouch 4RU and Ultrix FR12 where clicking outside of the language selector caused it to close and become unopenable. (DASH-4291)
- Fixed an issue where DashBoard would occasionally fail to display all tabs in the Edit Component window. (DASH-4294)
- Optimized the device panel layout for cards for Ultrix FR12 dimensions. (DASH-4278)
- Fixed an issue where the parent XPression node remained in online status after removing all XPression devices. (DASH-4310)
- Fixed an issue where a newly added XPression Device in DashBoard would automatically appear online, even if the device wasn't online or didn't exist. (DASH-4053)
- Fixed an issue which affected the RPM server on TD panel DashBoard, where selecting a role with multiple users in the RPM manager would only display the name of one user. (DASH-4320)
- Updated the "type" field in the Ultrix 12RU panel so that the panel reports itself as Ultrix. (DASH-4262)
- Fixed an issue where some product-specific logos did not appear at the top level of the DashBoard tree view. (DASH-4290)
- Fixed a typo in the Ultritouch upgrade drop down list. (DASH-4315)
- Fixed an issue where every launch of DashBoard running without a System Commands xml file would result in an incorrectly logged error for a missing command. (DASH-4325)
- Fixed an issue with DashBoard 9.5 where some international characters and languages did not display as expected. (DASH-4326)
- Made improvements to the cache clearing process for received messages, so that DashBoard only clears cached messages that are related to a recently changed OID. (DASH-4323)

## VERSION 9.5.1 – DECEMBER 2022

### BUGS ADDRESSED

- Fixed an issue which caused some keyboard and numpad widgets to display incorrectly on the Ultrix FR12. (DASH-4275)
- Improved the rendering time for large data tables. (DASH-4284)

- Addressed issues with running NDI on certain Windows machines without the Microsoft Visual C++ 2010 redistributable package. (DASH-4285)
- Addressed issues with start up when using the Vision[Ai]ry Control block. (DASH-4281)

## VERSION 9.5.0 – NOVEMBER 2022

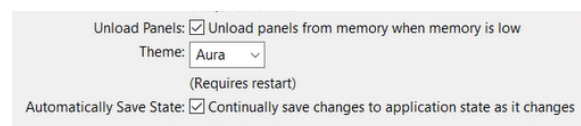
### WHAT'S NEW

#### • UPDATES TO XPRESSION PLUGIN

Added functionality that allows users to create a take item from a clip in the Create Take Item window.

#### • AUTOMATICALLY SAVE LAYOUT STATE SETTING

Added an option in preferences to automatically save changes to the application state. If the Automatically Save State preference is selected, the layout state is automatically saved upon each change, ensuring that it will remain consistent if the device is shut down unexpectedly.



**Automatically Save State option in preferences**

A save will be triggered by:

- Opening, resizing, or moving tabs
- Resizing windows
- Opening, closing, or adding folders to the file navigator view

#### • IMPROVEMENTS TO XML DEVICE INITIALIZATION PROCESS

If a device is initialized through XML and fails, the device initialization process will automatically switch to an OGP device initialization process.

#### • JVM REPLACEMENT

Azul Zulu has replaced the older version of the JVM.

#### • ADDED CUSTOM PANEL TEMPLATE FOR ULTRIX FR 12

Added an option to create a new CustomPanel File with the Ultrix FR 12 panel as a preset template.

#### • SUPPORT FOR MICROSOFT EDGE

The browser object now uses Microsoft Edge on 64-bit.

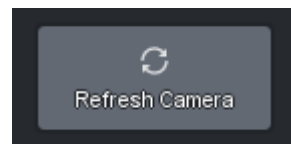
**NOTE:** Internet Explorer is no longer supported.

#### • PTZ CAMERA ENHANCEMENTS



The PTZ Camera Controller in DashBoard now includes **support for Canon CR-N300 and CR-N500 PTZ** cameras, including the following features:

- Use DashBoard to store and recall presets from camera storage. **Note** that this is limited to the 100 presets available on the camera – DashBoard does not support recall of presets stored locally for the Canon PTZ cameras.
  - Direct control of pan, tilt, zoom and focus.
  - Basic paint control. Note that for some paint settings (for example exposure and white balance modes), DashBoard is unable to access the full range of options available in the Web UI. Shutter control from DashBoard is not supported.
  - VISCA gateway to enable control of a Canon PTZ Camera from a serial VISCA controller such as Carbonite.
  - Furio gateway to enable control of a Canon PTZ Camera from a controller using the Furio API, such as SmartShell.
  - Use DashBoard tally service to monitor and display the camera tally state.
- Added control for ND filter on the Paint page of the Sony BRC-X1000 PTZ Camera Controller.
- For all PTZ Camera types, the button to refresh the UI from the camera has been moved to the main header bar to make it more accessible. This allows the UI to be updated where camera settings are changed from a source other than DashBoard.



## • PAINT SUPPORT FOR CANON C500 MkII

DashBoard now includes a paint control page for the Canon C500 MkII cinema camera.

- Direct control of exposure and color controls on camera.
- Set and configure focus mode on the camera.
- Store and recall iris, master black and auto focus with robotic presets when robotic presets are created or edited in SmartShell. Note that only auto focus on/off is stored with robotic presets – the auto focus mode (continuous or AF boosted) and face tracking modes are not stored.
- Navigate camera on-screen menu.





## BUGS ADDRESSED

- DASHBOARD
  - Fixed a rendering issue with script table. (DASH-4227)
  - Fixed an issue with the proxy server failing to serve certain third party OGP-Binary devices. (DASH-4226)
  - Addressed several scenarios where DashBoard would consume more memory than needed. (DASH-4223)
  - Fixed an issue where using the Advanced Tree View could cause additional nodes to be inserted into the Basic Tree View. (DASH-4216)
  - Fixed a memory leak where all JSON devices added to DashBoard were permanently retained. (DASH-4215)
  - Improved support for RBAC (Role Based Access Control) with OGP-JSON devices. (DASH-4210)
  - Addressed inconsistencies with device order in the visual logic tree view. (DASH-4207)
  - Addressed several issues with DashBoard performance when an Ultrix frame is rebooted. (DASH-4193)
  - Fixed an issue impacting Mac OS users, where popups within DashBoard would appear blank the first time they were opened. (DASH-4191)
  - Fixed an issue with incorrect support of TSL UMD 5 in DashBoard. (DASH-3460)
  - Fixed an issue that prevented certain menus from appearing when using the proxy server to share OGP-Binary devices. (DASH-4226)
  - Fixed an issue where the device communication method defaulted to full mode when an OGLML device panel was loaded in a DashBoard running touch mode. (DASH-4267)
- CAMERAS
  - Fixed an issue where creating a preset for the Panasonic AW-UE150 would fail when the gain value was less than 0dB. The camera controller now supports the full range of gain down to -3dB. (CI-727)
  - Fixed an issue where it was possible to set an invalid IP address for the UDP Direct Control Channel for the Furio Gateway to a PTZ Camera. Options are now limited to valid IP addresses for the host computer. (CI-689)

## VERSION 9.4.1 – MAY 2022

### BUGS ADDRESSED

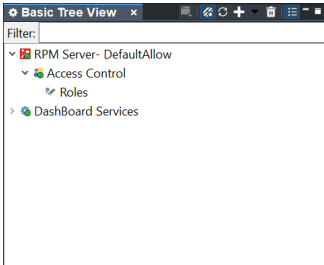
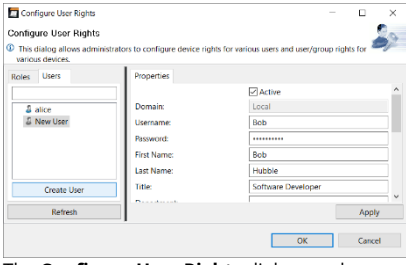
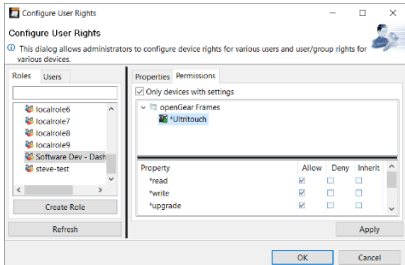
- Fixed an issue impacting DashBoard customers with multiple XPression devices, where the XPression plugin was removed from the device tree when DashBoard closed. (DASH-4188)

## VERSION 9.4.0 – APRIL 2022

### WHAT'S NEW

#### • ROLE-BASED ACCESS CONTROL (RBAC)

DashBoard now provides Role-Based Access Control (RBAC) via the Ross Platform Manager (RPM) Server. RPM can sync with existing LDAP directory infrastructures, or an administrator can configure users and roles from scratch using the DashBoard interface or RPM web-browser interface. With RPM it's easy to enforce different levels of user permissions — read, write, and/or upgrade — for various DashBoard Connect/openGear devices or panels present in DashBoard.

1) ADD RPM SERVER	2) CONFIGURE USER RIGHTS	3) CONFIGURE DEVICE PERMISSIONS
 <p>Once added, the RPM Server appears in the DashBoard Tree View. Expand it and use the <b>Access Control</b> node to open the Configure User Rights dialog.</p>	 <p>The <b>Configure User Rights</b> dialog can be used to configure user and role permissions.</p>	 <p>Once a role is selected, you can control access to DashBoard devices from the <b>Permissions</b> tab.</p>

### REQUIREMENTS:

Requires the Ross Platform Manager (v1.6+) — which includes an RPM Server — and licenses for **Role-Based Access Control** and **LDAP Authentication** (if required). Please reach out to your Ross sales representative for more details.

### LIMITATIONS FOR ULTRITOUCH DEVICES:

Currently, it is recommended that you assign both read and write access permissions to roles that perform administrative actions on the Ultritouch Management panel. For more details, see the [Known Issues](#) for Role-Based Access Control (RBAC).

- For more details, see the new **DashBoard Role-Based Access Control Guide**. It is available on the [Ross Video website](#) under the DashBoard product page's **Downloads**.

**TIP:** You can also access the latest DashBoard guides in DashBoard, from the top menu (under **Help > Help Contents**).

- **Notice:** The deprecated User Rights Management (URM) Guide has been removed.

## OGP SUBSCRIPTIONS SUPPORT (FOR OGP JSON DEVICES)

The new openGear (OGP) Subscriptions protocol is available for OGP JSON devices that have implemented Minimal Mode. This feature will help to optimize memory usage and communication, increase panel efficiency, and load device panels faster. Once implemented, device panels will only receive updates from the previously defined minimal set or the new subscriptions list of device parameter OIDs.

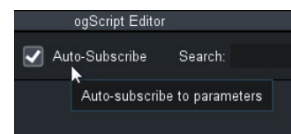
```
<context contexttype="opengear" objectid="MyDevice" subscriptions="true">
  <meta>
    <subscription oids="oid1, oid2, oid3*" />
  </meta>
</context>
```

## CUSTOMPANEL OGLML DOCUMENT SYNTAX

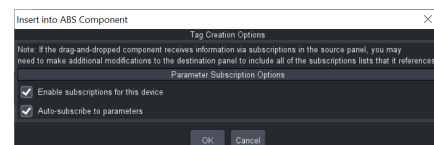
## NEW SUBSCRIPTIONS "AUTO-SUBSCRIBE" CHECKBOXES

The DashBoard PanelBuilder editor provides convenient auto-subscribe checkboxes to simplify the process of adding device parameters to the panel's subscriptions list.

**Note:** When the parameters are from a device that does *not* support subscriptions, the checkboxes will be grayed out.

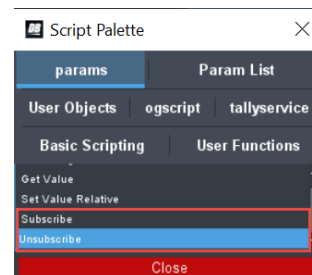


Auto-Subscribe option in ogScript Editor



Auto-subscribe option in PanelBuilder

Available when a component is dragged-and-dropped from a DashBoard Connect/OGP device.



Subscribe|Unsubscribe option in Script Palette

- General information on how to work with OGP devices that support subscriptions can be found in the **DashBoard User Guide** and **CustomPanel Development Guide**.

It is available on the [Ross Video website](#) (under **Downloads**).

**TIP:** You can also access the latest DashBoard guides in DashBoard, from the top menu (under **Help > Help Contents**). Use the search to jump to the “Minimal Mode” or “Subscriptions” content.

- OGP partners can find **Minimal Mode & Subscriptions** Application Notes and the **DashBoard openGear Software Development Guide** on the [openGear Partner Portal](#).  
**NOTE:** This guide contains the protocol information and is only available to openGear partners who have signed the Ross Video Non-Disclosure Agreement (NDA).

- **SUPPORT FOR NDI® 5**

NDI users can take advantage of the latest NDI innovations.

**IMPORTANT:** DashBoard 9.4 and later support NDI® 5, but not all video codecs are supported for NDI® |HX. Windows and Linux do not support the HEVC codec.

- **SUPPORT FOR HITACHI CAMERA MODEL SK-UHD7000**

This model has been added to the list of supported cameras.

- **PTZ CAMERA ENHANCEMENTS**

**Furio Gateway for PTZ Camera Controllers**

The Furio gateway that allows controllers using the Furio API, such as SmartShell, to control PTZ Cameras through DashBoard has a few new features:

- The value of ZoomVar reported in SmartShell for the pan and tilt axes now reflects whether the variable zoom setting on the PTZ Camera is ON (zoomVar reported as 100) or OFF (zoomVar reported as 0). For cameras that don't support Variable Zoom and for other axes, the value will be reported as 50. This value is read only and cannot be set from SmartShell or other Furio controllers.
- The Furio Gateway now reports when the camera has moved away from a recalled preset through direct control of the pan, tilt, zoom or focus axes. This can be seen in SmartShell as a change in the border color of the last recalled preset from dark blue to light blue. This feature works only when the camera was moved by a control sent through the DashBoard PTZ Camera Controller, either directly or via a gateway.

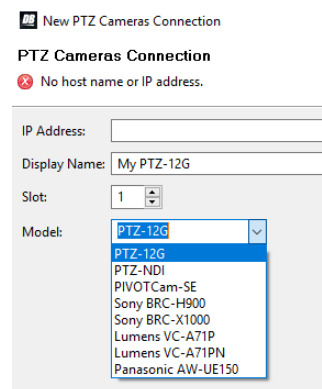
## BUGS ADDRESSED

- DASHBOARD
  - Fixed a Big Sur OSX compatibility issue where DashBoard did not always open. (DASH-3530)
  - Fixed an issue where the DashBoard Memory Manager indicator did not display the correct status after the DashBoard region and language settings were changed. (DASH-3891)
  - Fixed an Ultritouch issue with network DNS setting and retrieval. (DASH-1658)
  - Fixed an issue where the file size limitation of 16MB was not sufficient to upload larger files to openGear cards. The file size now supports file uploads up to 32MB. (DASH-3908)
- CAMERAS
  - Fixed an issue where when using Carbonite to control the iris on a PTZ-12G, PTZ-NDI, or Lumens camera through the VISCA gateway of the DashBoard PTZ Camera plugin, the iris close function appeared at the wrong end of the scale. Iris control from Carbonite now works normally. (CI-637)

## VERSION 9.2.2 – DECEMBER 2021

### WHAT'S NEW

- **CONTROL OF ROSS PTZ-12G & PTZ-NDI CAMERAS**  
 The PTZ Camera Controller in DashBoard now supports the new Ross PTZ-12G and PTZ-NDI cameras. To add a PTZ camera to DashBoard, navigate to **File > New > Other > Cameras** and select **PTZ Cameras**. Select the camera from the list of available models.



PTZ-12G & PTZ-NDI Camera Models

The PTZ-12G and PTZ-NDI Camera Controllers within DashBoard allow you to:

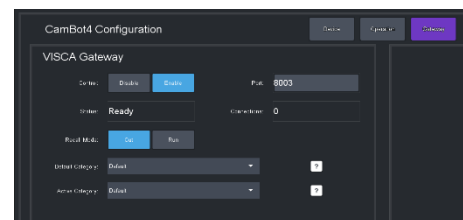
- **Store, recall and manage presets** — This feature provides access to the 256 stored presets available on the camera itself, as well as presets stored locally on the DashBoard computer.

- **Directly control pan, tilt, zoom, focus and iris** — Use the DashBoard UI or an external USB HID joystick connected to the DashBoard computer to control these settings. You can also set the digital zoom limit for the camera and store and recall it with presets stored locally in DashBoard.
- **Perform basic paint control** — Use the DashBoard UI or an external USB HID joystick connected to the DashBoard computer to perform basic paint control.
- **View and configure selected camera settings** — You can view these settings and access the camera's on-screen configuration menu.
- **Use the VISCA gateway to control your PTZ camera from a VISCA over TCP controller (such as Carbonite)** — You can use the gateway to directly control pan, tilt, zoom and focus as well as to store and recall presets both locally on the DashBoard machine and from on-camera storage.
- **Use the Furio gateway to control your PTZ camera from a controller using the Furio API (such as SmartShell)** — You can use the gateway to directly control the pan, tilt, zoom and focus on the camera as well as to store, recall and manage presets and banks.
- **Use the DashBoard tally service to monitor and display the camera tally state** — In addition to tally services, you can also set the tally light on the camera itself.

For more details, see the [USER MANUAL FOR PTZ CAMERA CONTROL PLUGIN \(8351DR-015-9.2.2\)](#).

## • VISCA GATEWAY FOR PT HEAD CONTROL PLUGIN

The Ross PT Head Controller in DashBoard now includes a VISCA gateway feature. To configure and enable the gateway, select the **Config** option within the DashBoard control panel for the PT Head and look for the new **Gateway** button.



VISCA Gateway for PT Head Plugin

The VISCA gateway provides basic control of a Ross PT Head from a VISCA over TCP controller (such as a Carbonite). The VISCA gateway allows you to:

- **Directly control pan, tilt, zoom, and focus** — Control these settings directly from the PT Head of the controller.
- **Store and recall presets using the external ID of the preset as the reference** — Configuration settings in the gateway allow you to determine whether recalling presets through the gateway should trigger a cut or a run and to set the categories on the PT Head to use when storing and recalling presets.

For more details, see the [USER MANUAL FOR PT HEAD CONTROL PLUGIN \(8351DR-019-9.2.2\)](#).



- **CONTROL OF LUMENS VC-A71P & VC-A71PN CAMERAS**

The PTZ Camera Controller in DashBoard now supports Lumens PTZ Cameras with model numbers VC-A71P and VC-A71PN. This controller offers many of the same features as the PTZ-12G & PTZ-NDI controllers, apart from a few camera settings which are not supported through VISCA by the Lumens camera. It does not include a digital zoom limit, and the variable zoom feature (to determine whether the pan & tilt velocity should vary as the zoom changes).

#### LICENSING REQUIREMENTS

A PTZ Camera license is required to use DashBoard to control these cameras.

## BUGS ADDRESSED

- PT HEAD CONTROLLER
  - Fixed an issue where using DashBoard camera control alongside another camera controller such as Vision[Ai]ry Ft to control a PT Head would occasionally cause DashBoard to fail to gain joystick control when the **Enable Joystick** button was pressed. (CI-492)

## VERSION 9.2.1 – APRIL 2021

## BUGS ADDRESSED

- DASHBOARD
  - Fixed an issue where devices with numeric OIDs occasionally caused AutoWire to break. (DASH-3735)
  - Fixed an issue where fetching widgets occasionally caused DashBoard to become unresponsive for a minute or longer. (DASH-3771)
  - Fixed an issue where the Data Sources table rows did not each point to the correct device context. (DASH-3721)
  - Fixed an issue with toggle buttons, with a mask attribute applied, where the mask included a partial white border outline. (DASH-3327)
  - Fixed an issue where modifying parameter values while building OGLML occasionally caused DashBoard to become unresponsive. (DASH-3784)
  - Fixed a performance issue where Graphite Audio Mixers in DashBoard were impacted by memory leaks. (DASH-3751)
- ACIDCAM AND HITACHI CAMERA CONTROLLER
  - Fixed a tally issue where the green tally light was not working as expected. (CI-371)

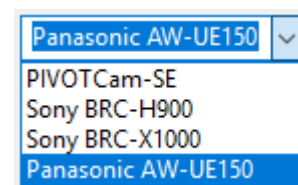


## VERSION 9.2.0 – NOVEMBER 2020

### WHAT'S NEW

#### • CONTROL OF PANASONIC AW-UE150 CAMERAS

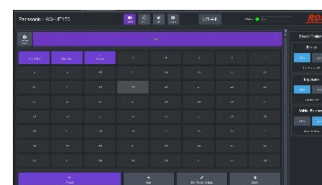
The PTZ Camera Controller in DashBoard has been extended to add support for Panasonic AW-UE150 cameras. To add an AW-UE150 to DashBoard, navigate to **File > New > Other > Cameras**, and select **PTZ Cameras**. You can then select the Panasonic AW-UE150 from the list of available models.



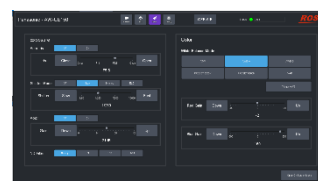
Selection of the Panasonic AW-UE150

The Panasonic AW-UE150 Camera Controller within DashBoard allows you to:

- Store, recall and manage presets. Presets can be stored locally on the machine running DashBoard, or using the on-camera storage.
- Directly control pan, tilt, zoom, focus and iris using the DashBoard UI or an external USB HID joystick connected to the DashBoard computer.
- Perform basic paint control using the DashBoard UI or an external USB HID joystick connected to the DashBoard computer.
- View and configure selected camera settings and access the camera's on-screen configuration menu.
- Use the VISCA gateway to control your AW-UE150 from a VISCA over TCP controller such as Carbonite. You can use the gateway to directly control the camera and to store and recall presets both locally in DashBoard and on the camera.
- Use the Furio gateway to control your AW-UE150 from SmartShell or another controller using the Furio API. You can use the gateway to directly control the camera and to store, recall and manage presets and categories.



Presets



Setting Configuration

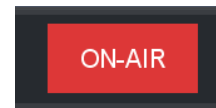
#### NOTE

- To control the Panasonic AW-UE150 from DashBoard, you must purchase a license for the **PTZ Camera Control** feature. Please contact Ross Technical Support for assistance.

- **INTEGRATION OF DASHBOARD TALLY SERVICE WITH PTZ CAMERA CONTROL**

The PTZ Camera controller can now be integrated with the DashBoard tally service to:

- Monitor and display camera tally state – both on-air and preview.
- Broadcast tally status to SmartShell using the Furio gateway so that SmartShell can correctly display on-air status for PTZ Cameras controlled through DashBoard.
- Optionally set the tally light on the camera itself.
- This functionality is available for all supported PTZ Camera types – PIVOTCam-SE, Sony BRC-X1000, Sony BRC-H900 and Panasonic AW-UE150.



Camera Tally State

**NOTE**

- The DashBoard tally service does not currently work with the TSL5.0 protocol. To use the new PTZ Camera Tally Integration feature, you must use TSL3.1. (DASH-3103)

- **SUPPORT FOR SONY BRC-X1000 TELE CONVERT AND CLEAR IMAGE ZOOM FEATURES**

The PTZ page for the Sony BRC-X1000 camera control now provides buttons to enable and disable the Tele Convert and Clear Image Zoom features of the camera.

- **PTZ CAMERA CONTROL LICENSE**

The Sony BRC Camera Control feature license has now been extended to include the new Panasonic AW-UE150 camera controller and rebranded as the PTZ Camera Control license. If you have already purchased this license, you will be able to access the new Panasonic AW-UE150 camera controller with no additional licensing required. Please contact Ross Technical Support for assistance.

For more information about using DashBoard to add and control PTZ cameras, please see the ***User Manual for PTZ Control Plugin (8351DR-015-9.2)***. To download a PDF copy, go to <https://www.rossvideo.com/support/product-documentation/ross-robotics/>.

## UPGRADE CONSIDERATIONS

### • LAUNCHING DASHBOARD ON MACOS BIG SUR

- Upgrading to macOS Big Sur, version 11.0.1 or later, is not recommended if you are running DashBoard version 9.2 or earlier. Using macOS Big Sur may cause issues when launching the DashBoard application. You can use one of the workaround methods listed below:

#### To Launch DashBoard using Finder

- Navigate to the DashBoard installation directory. Click the Finder icon in the Dock and under **Applications** click **DashBoard.app** and select **Show Package Contents**. Then you can navigate to the **Contents > MacOS >** and run **PermissionDashBoard**.

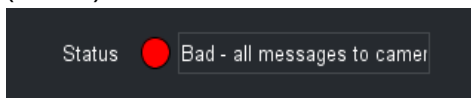
#### To Launch DashBoard using Terminal

- Enter this CLI command in Terminal. Note: this directory path assumes that you have installed DashBoard in the default installation directory.  

```
open
/Applications/DashBoard/DashBoard.app/Contents/MacOS/PermissionDashBoard
```

## BUGS ADDRESSED

- The camera controller for ACID and Hitachi cameras was not setting the green tally light on the camera when the DashBoard UI was displaying it as being on. This has now been resolved and green tally light should be correctly displayed on the camera. (CI-371)
- If the DashBoard PTZ Camera Controller was connecting to a camera that was mostly unresponsive, the UI would continue to show a progress bar displaying message "Reading camera settings" that would remain stuck at 99%. Behavior has now been changed so that the progress bar will now show "Waiting for camera to power on". After 2 minutes, the progress bar will disappear and an error flag will be set so that the status of the camera is shown as "Bad - all messages to camera resulting in errors", as shown below. If you see this error, please check the operation of your camera. For PIVOTCam-SE cameras, this can sometimes occur if the VISCA options in the On-Screen Display are incorrectly configured. (CI-278)



- When using SmartShell to control a PTZ Camera through the DashBoard Furio Gateway, the displayed focus position was not being updated when the camera focus was adjusted using either SmartShell or the DashBoard UI. This was caused by the PTZ Camera Controller failing

to request the new focus position after the focus axis had stopped moving and has now been resolved (CI-433).

- When using SmartShell to control a PTZ Camera through the DashBoard Furio Gateway, requesting a ZOOMVAR value of 0 for any axis would trigger a SmartShell error "BADDYNAMICRATIOARG". This has now been corrected so that a value of 0 will be accepted. Note that the SmartShell ZOOMVAR function is not supported by the Furio gateway and so will have no effect on axis sensitivity. To change pan and tilt axis sensitivity as the zoom value changes, use the "Variable Zoom" option in the DashBoard camera panel (CI-434).

## VERSION 9.1.4 – OCTOBER 2020

### BUGS ADDRESSED

- DASHBOARD
  - Fixed several Linux and Mac OS issues where dragging and dropping actions in DashBoard's embedded web browsers and device interface pages occasionally caused DashBoard to become unresponsive.  
(DASH-3490 | DASH-3491 | DASH-3492 | DASH-3502)

## VERSION 9.1.3 – SEPTEMBER 2020

### BUGS ADDRESSED

- DASHBOARD
  - Fixed a Linux issue where device interface pages created from HTML outputs did not always display navigation correctly.

### NOTE ON SUPPORTED LINUX OPERATING SYTEMS

The following Linux operating systems are supported for DashBoard Version 9.1.3:

- CentOS Version 7 (64 bit)
- Ubuntu 16.04.6 LTS (64 bit)
- Fedora Version 23 (32 bit)

## VERSION 9.1.2 – AUGUST 2020

### BUGS ADDRESSED

- DASHBOARD
  - Fixed an issue where integer parameters using the **Date Picker** widget display type view were not displaying the correct parameter value updates. (DASH-3366 | DASH-3367)
  - Fixed an issue where OGP-JSON devices and devices shared via the Proxy Server could not use OGLML in device menus in cases where OGLML was served via external objects. (DASH-3409)
  - Fixed a Mac OS issue with the Visual Logic Editor, where attempting to add Visual Logic blocks from a device was causing a null pointer exception that prevented blocks from appearing. (DASH-3415)
  - Fixed an issue with UDP messages, where DashBoard prevented certain UDP messages from being sent. (DASH-3416)
  - Fixed an issue that prevented custom slot names from appearing when OGP frames were shared via the proxy server. (DASH-3417)
  - Fixed an issue where the **Add Task** option would not appear consistently when panel builders right-clicked on parameters in PanelBuilder Edit Mode. (DASH-3384).
  - Fixed an issue where the custom color defined in the `<color>` tag did not appear in the DashBoard Component Editor's color palette. (DASH-3407)
- CAMERA MOTION SYSTEMS
  - Fixed an issue where activating the paint integration feature on the PT Head plugin was preventing custom panels from opening successfully. (CI-339)

## VERSION 9.1.1 – JULY 2020

### WHAT'S NEW

- **WINDOWS 64-BIT VERSION OF DASHBOARD AVAILABLE**

In addition to our Linux 64-bit and Mac OS 64-bit versions, DashBoard is now available in a Windows 64-bit version that provides a faster, and more scalable experience for users. In addition to performance improvements, this version supports devices with requirements for 64-bit only software.

If the Windows, Mac or Linux device you are running DashBoard on features a 64-bit processor and at least 4GB of RAM, you also have the option to increase memory allocation to DashBoard using the new feature described below.

- **ABILITY TO INCREASE MEMORY ALLOCATION FOR THE 64-BIT VERSION OF DASHBOARD**

If you are running the 64-bit version of DashBoard, you can choose the amount of memory to allocate to DashBoard. The options range from the default value, which is a minimum of 1GB, to a maximum value of half of your system's available RAM.

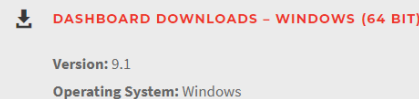
Navigate to **Preferences > General** to set the amount of memory. You can drag the slider to set the amount of memory available to DashBoard. The amount can only be allocated in increments of 1GB. You must restart DashBoard for the changes to take effect.

- **QUICK METHOD TO ADD TABS**

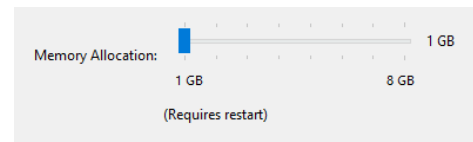
You can now quickly add additional tabs without opening the Component Editor. In PanelBuilder Edit Mode, right-click on the blank space beside an existing tab to add another tab.

- **QUICK METHOD TO ADD TASKS TO BUTTONS, LABELS, PARAMS**

You can now quickly add tasks to buttons, labels or parameters without opening the Component Editor. In PanelBuilder Edit Mode, right-click on a button to add a task to the selected button.

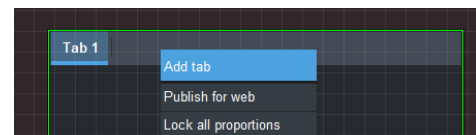


Windows 64-Bit Download

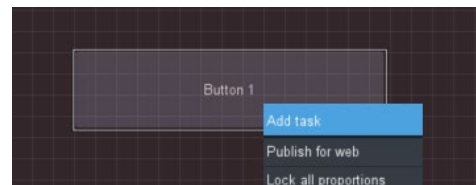


Memory Allocation Feature

The General Preferences dialog is shown.



Add Tab Option



Add Task Option

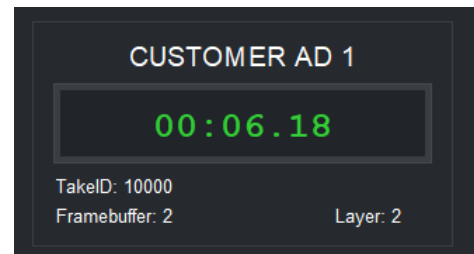


- **XPRESSION COUNTDOWN TIMER WIDGET**

The XPression Countdown widget allows you to monitor a specific framebuffer and layer of XPression to determine what take item is currently on that layer, and the amount of time left for that take item. You can access this custom widget from the **Widget** button on PanelBuilder Edit Mode toolbar.

### REQUIREMENTS

XPression Version 10.0 or later is required.



**XPression Countdown Timer Widget**

- **AURA THEME ENHANCEMENTS**

The Aura theme includes usability enhancements for a consistent and smooth UI experience. Includes updates to scroll bars, touch wheel and slider views, label borders, border styles, masks, device/tree view icons, file pickers, background colors, and Ultritouch color constants.

### NOTE ON AURA FIXES

- XPression license messages now display the correct value. (DASH-2177)
- PanelBuilder Edit Mode exception errors that appeared when you switch modes have been resolved. (DASH-3118)

## CONTROL OF ROSS PAN & TILT HEADS

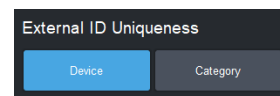
There are a number of updates to the Ross Pan & Tilt Head controller first introduced in v9.0:

### External ID Management

The Ross PT Head controller allows you to assign a numerical ID to each preset, which can be useful for automation or when creating custom panels. Version 9.1 adds several enhancements to the basic external ID functionality:

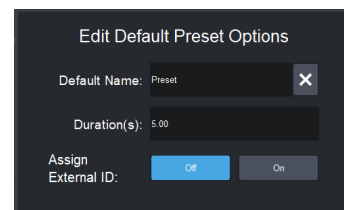
- **External ID Uniqueness:**

DashBoard will now ensure that all external IDs assigned to presets through DashBoard are unique, enforced either by category or by device, as chosen by the operator.



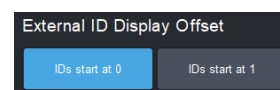
- **Auto-assign**

DashBoard can now be configured to automatically assign an external ID when a preset is created, or upon request.



- **Display offset**

DashBoard can now be configured to offset the displayed external IDs by 1. This can be helpful when working with other systems that also offset preset IDs, such as Carbonite.





- **Preset CUT and RUN commands using external ID**

New commands have been added for custom panel creators to trigger preset recalls using the external ID assigned to the preset.

## Hard Panel Control of Preset Recall

DashBoard can now be configured to allow a Hard Panel (such as a joystick controller with assignable buttons) to control preset recalls:

- CUT, RUN or ALT button activation
- HALT a preset recall
- Adjust the run duration of the preset
- A new time mode button that allows the operator to choose whether the hard panel controls run duration prior to preset recall, or time dilation during recall

Note that hard panel control of preset recall will not work when connecting to a PT Head connection that has been shared through the proxy server; a separate connection to the PT Heads should be established from every DashBoard client that requires access to them.

## Integration of Paint Control

If the camera mounted on your PT Head is controlled by DashBoard, you can now configure DashBoard to integrate the paint control page into the Ross PT Head UI. This will allow you to view the paint UI as a tab within the PT Head UI and to control paint parameters with a joystick pointed at the PT Head.

This feature is supported for Ross ACIDcam, Hitachi Studio cameras, Panasonic AK-HC1500/HC1800/UB300 and Sony studio cameras that support CNA-1. For Sony and Panasonic cameras, you must have a Ross Video license for the paint control page in order to integrate paint controls into the PT Head UI.

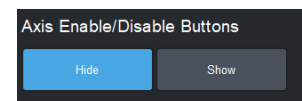


**Paint Control Feature**

The paint UI tab is shown under the PT Head

## Enable/Disable Axes using PT Head UI

DashBoard now offers an option to expose controls to enable and disable individual axes on the PT Head. Disabling is temporary; reconnecting DashBoard will re-enable the axes.

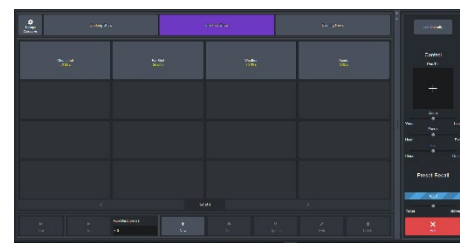


## Preset Page – Safe Mode

Both shotbox and panel modes now offer an option to deselect all actions on the preset page, so that presets cannot be recalled or modified inadvertently. DashBoard will start up in this state.

For more information about using DashBoard to add and control robotic pan & tilt heads, and the new features added in 9.1, please see the User Manual for PT Head Control (8351DR-019) .

To download a PDF copy of the user manual, go to <https://www.rossvideo.com/products-services/acquisition-production/robotic-camera-systems/studio-robotics/>, follow the **Downloads** link, expand the **Manuals** node, and select the manual.



**Preset Page**

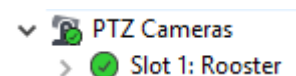
The new deselect all action is displayed.

## PTZ CAMERA ICONS

A new icon is now used for PTZ Cameras in the DashBoard tree

For more information about using DashBoard to add and control PTZ cameras, please see the **User Manual for PTZ Control Plugin (8351DR-01)**. To download a PDF copy, go to

<https://www.rossvideo.com/support/product-documentation/ross-robotics/>.



## BUGS ADDRESSED

- DASHBOARD
  - Fixed an issue in DashBoard v9.1.0 where the DashBoard tree view did not display cached items when an HTTP request failed. (DASH-3404)
  - Fixed an issue with the installer for users running DashBoard v.9.1.0 on Mac OSX. (DASH-3406)
  - Fixed an issue with widget hint **WIDGET\_LINE\_ONLY (6)**. (DASH-3401)
  - Fixed a notarization issue that required Mac OSX Catalina users to bypass Security and Privacy settings to install DashBoard. (DASH-2121)
  - Fixed an issue with the EQ Graph where replaced constraints continued to display the previous constraint's values. (DASH-2594)
- CAMERA MOTION SYSTEMS
  - Fixed a camera selection issue that occurred when you switch cameras using the joystick while **UI follows selection** was enabled. (DASH-2167)
  - Fixed an issue where removing a PTZ camera and then attempting to add the same device, or another device with the same IP address, back into DashBoard required a

restart of DashBoard. This has now been resolved and you can remove and re-add the same device without encountering problems. (CI-315)

- The Preset page of the DashBoard PT head plugin previously accepted run duration values that were too low to ever be operable. This has been resolved by introducing a number pad for specifying run duration values. If the value is too low, it automatically increases to the lowest potentially operable value when the number pad closes. Note that this change does not guarantee the duration will always be valid for recalling the preset. The minimum valid duration can be determined only when you are about to recall the preset, because it depends on the starting position of the head at that time. (CI-317)
- Previously, using the selector to switch joystick control to another camera while one or more joystick controls were active (for example the head was panning) would cause the first device to continue moving. This has now been corrected for both PT Head and PTZ Camera controllers. When the joystick switches to another device, all velocity controls will be reset to 0 and the first device will stop moving. (CI-328)
- Fixed an issue where SmartShell, when connecting to two or more PTZ Cameras using the DashBoard Furio Gateway, was occasionally showing a disconnection error due to a timeout on an Axis Status request. This was caused by a threading issue when formatting the motor position in the message response which has now been resolved. (CI-332)

## VERSION 9.0.2 – MAY 2020

### BUGS ADDRESSED

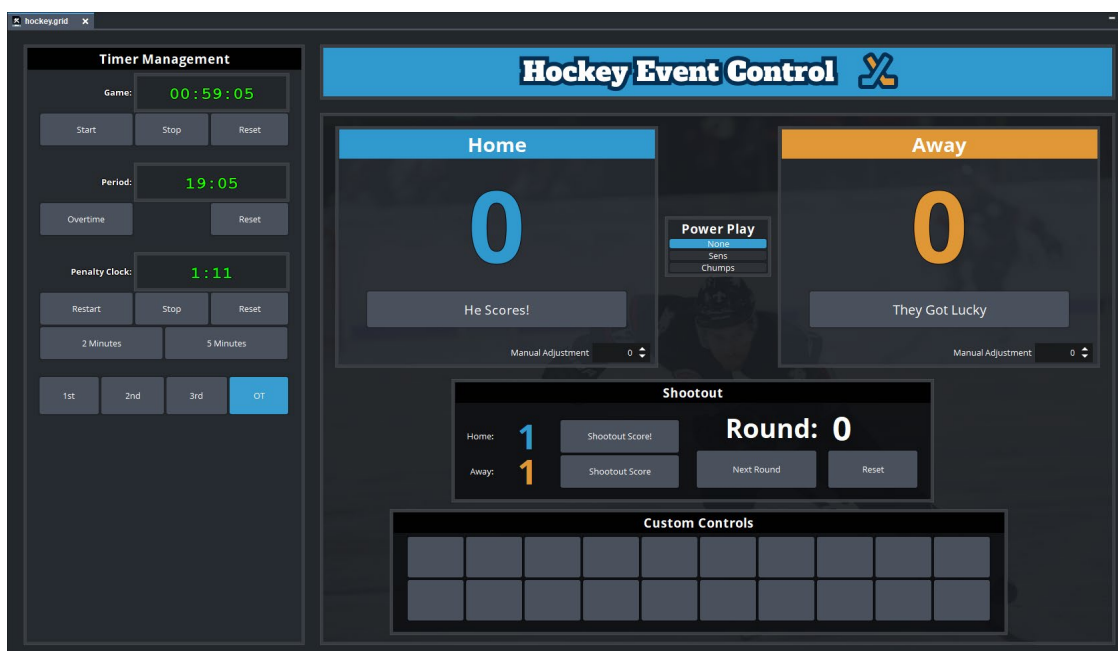
- Fixed an issue where listeners are created repeatedly for the same component. (DASH-3053)
- Fixed an issue where hovering over buttons caused a memory leak issue. (DASH-3055)

## VERSION 9.0.0 – APRIL 2020

### WHAT'S NEW

- NEW AURA UI THEME**

You can now design and build beautiful custom panels that leverage the new Aura theme, and update existing panels by launching them in DashBoard 9.0. Aura makes it easier to design stunning panels using simple two-dimensional elements and bright colors.

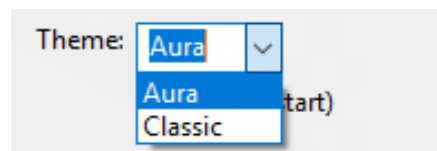


#### COMPATIBILITY NOTE

Blackstorm does not support the Aura theme.

- CHANGE THEME PREFERENCES**

Theme preferences now provides the ability to go back to the Classic theme if needed. Theme preferences are found in the **Window** menu under **Preferences > General**.



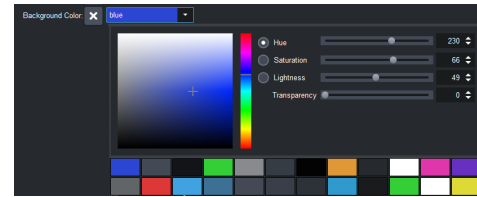
Theme Preferences

#### COMPATIBILITY NOTE

New features developed for future versions of DashBoard will not support the Classic theme.

- **UPDATED THE COLOR PALETTE**

The new color palette allows you to adopt a consistent color scheme for panels and saves you time by minimizing the need for style overrides. For more details on recommended usage, see the CustomPanel Development Guide.

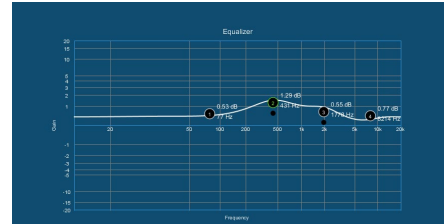


**Color Palette or Color Constants**

This example shows the updated color palette.

- **EQ GRAPH**

You can now map parameters from a device to display a parametric equalization visualization, or EQ Graph. Many custom options, such as Q values and colors, are available using config options.

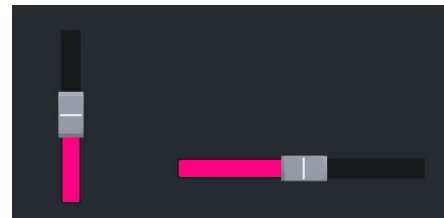


**An EQ Graph**

This example displays the live band frequency for the parameters on a Graphite.

- **SLIDER SUPPORTS COLOR FILL OPTION**

The **w.fillcolor** config option option allows you to set the color fill for a slider with no label.



**Vertical Slider (25) and Horizontal Slider (24)**

This example displays two no label sliders with the **w.fillcolor** config option set to **#ff0081**.

- **SLIDER SUPPORTS ANCHOR FILL OPTIONS**

The **w.fillanchor** config option option allows you to set an anchor point of min, max, mid, or none for the color fill for a slider with no label.



**Vertical Sliders (25) and Horizontal Sliders (24)**

This example displays all of the available **w.fillanchor** options. The horizontal sliders show max, mid, min and none from top to bottom. The vertical sliders show max, mid, min, and none from left to right.

- **DISABLE KEYBOARD AND NUMBER PAD**

The **w.keyboard** config option option allows you to disable the keyboard or number pad that appears by default for Text Field (3) and Spinner (5) type widgets on Ultritouch panels.

## EXTERNAL CONSTRAINTS

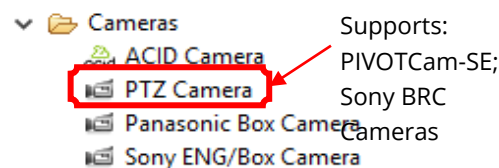
The EXTERNAL\_CONSTRAINT can be used to indicate that the constraint for this parameter is provided in an external object, rather than embedded within the parameter descriptor.

### Syntax:

```
"constraint": {
  "type": "EXTERNAL",
  "eo": "0x05"
},
```

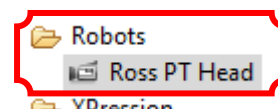
## CAMERA CONTROL

Menu options for adding a new camera to DashBoard have been reconfigured to make them clearer and to distinguish between paint control of ENG/Box cameras and control of PTZ cameras.



## CONTROL OF ROSS PAN & TILT HEADS

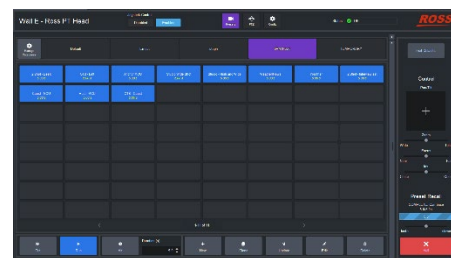
DashBoard now includes a built-in controller for Ross Pan & Tilt Heads (Note: while Furio heads can communicate with DashBoard directly, CamBot heads require the CamBot Protocol Translation software that is part of the Robotics Server to communicate with DashBoard. This software will be available for free for use with the PT head plugin).



To add a PT head in DashBoard, navigate to **File > New > Other > Robots**, and select **Ross PT Head**. The head's IP address is required.

Once connected to a PT Head, the operator can:

- Store, recall, view and manage presets stored on the head. The operator can:
  - View, add, delete, and rename categories.
  - View, add, clone, edit, update, and delete presets.
  - Perform timed recall of presets – using either the duration stored with the preset or an alternate duration set in the UI. Recall time can be dynamically altered while the preset is in progress.
  - Assign external IDs to presets for use with other control systems such as switchers or APC software. Note that DashBoard does not ensure that the assigned IDs are unique.

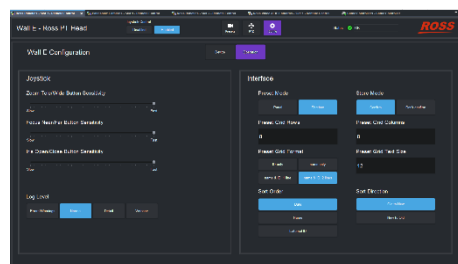
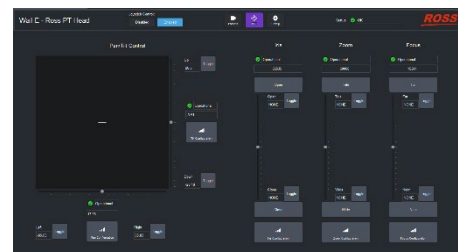




- Directly control pan, tilt, zoom, focus, and iris axes – either through the DashBoard UI or by connecting a standard Microsoft HID-compliant USB joystick to the DashBoard computer.

The operator can:

- Enable and disable joystick control.
  - View axis status and position information
  - Configure axes – speed, damping, and zoom-dependent sensitivity
  - View axis limits. Set and clear soft limits for each axis.
- In addition to providing access to all of the core functionality of the pan & tilt heads, the Dashboard controller also includes some more advanced features that make it easier to use in a variety of workflows:
    - Supports both *panel* mode (select a preset and then select the desired action) and *shotbox* mode (select an action and then select the desired preset)
    - Includes settings to configure the preset grid size, view, and sort options. Also includes a setting to disable the confirmation pop-up upon preset creation, applying default values to accelerate the workflow.



For more information about using DashBoard to add and control robotic pan & tilt heads, please see the User Manual for PT Head Control (8351DR-019) . To download a PDF copy of the user manual, go to <https://www.rossvideo.com/products-services/acquisition-production/robotic-camera-systems/studio-robotics/>, follow the **Downloads** link, expand the **Manuals** node, and select the manual.

## BUGS ADDRESSED

- Fixed an Ultritouch issue where zip files that contained the same name as a folder caused an error message to appear despite the upload occurring successfully. (DASH-2194)
- Fixed an issue where the tooltip style attribute did not work for the color chooser and color chooser pop-up widget. (DASH-2393)

## KNOWN ISSUES

### ROLE-BASED ACCESS CONTROL (RBAC)

- **FOR ULTRITOUCH** — When you assign a role permission for an Ultritouch device, currently the device permissions (to read, write or upgrade) may not perform as expected due to differences with the Ultri-touch Management panel. It is recommended that you use both read and write access per-missions to perform administrative actions on the Utritouch Management panel.
- **RPM SERVER CERTIFICATES USING HTTPS** — If you are using an RPM Server that is secured with HTTP Secure, future DashBoard upgrades will require manually adding the RPM Server certificate to DashBoard after the installation process is complete. The upgrade procedure can be found in the DashBoard Role-Based Access Control Guide (85100DR-09A-xxx).
- If a role has any permissions for a card in an openGear frame, that role will also allow users assigned to that role to access any panels that use that card, or any cards in that frame, as a data source. (DBE-835)

### NETWORK DEVICE INTERFACE (NDI)

- Limitations for NDI® 5 - DashBoard 9.4 and later support NDI® 5, but not all video codecs are supported for NDI®|HX:
  - Windows version does not support the HEVC codec
  - Linux version does not support the HEVC and H264 codec

### AURA THEME

- Due to issues with SVG images, it is currently recommended that you avoid using SVG images within tables, trees, and combo boxes.
- If you are using the Spinner (Hex) widget in DashBoard 9.0+ with a Mac client, you may encounter issues with the text not displaying fully.

### ROSTALK EX

- If you use a panel that uses RossTalkEx to send commands to an XPression, and then try to access that XPression's Sequencer View panel, it will fail to load the sequence items. If you open the Sequencer View panel first, and then use your panel you will not encounter any issues.

## PAINT CONTROL FOR SONY ENG/BOX CAMERAS

- Upgrading to a new version of DashBoard causes SmartShell to lose connectivity to Sony CNA-1 cameras via the DashBoard proxy server. To re-establish connectivity, open the DashBoard Proxy Server page, make note of the order of the cameras, Unshare all cameras, then Share each camera again in the same order that they were originally shared by right-clicking on each camera in the DashBoard tree and clicking **Share Device**. (CI-190)

## PTZ CAMERA CONTROL

- The VISCA gateway for PTZ Cameras provides only a limited implementation of the VISCA protocol and does not include support for most status inquiries including the current value of pan, tilt, zoom and focus axes. Due to this limitation, focus control does not work from Carbonite (when configured to connect to a Sony device) or Acuity switchers when connecting to a PTZ Camera through the DashBoard VISCA gateway. Auto focus is unaffected by this issue and can be set from Carbonite or Acuity. For Carbonite, the recommended workaround is to use the “pivotcam” device configuration when connecting to the DashBoard VISCA gateway. For Acuity, focus must be controlled directly from DashBoard. Other VISCA controllers may encounter similar problems when connecting to the VISCA gateway. The recommended approach is to use a velocity-based control wherever possible (CI-307, CI-189)
- The full range of iris values is not available when controlling iris from Carbonite and Acuity when connecting to a Sony BRC camera through the DashBoard VISCA gateway. This does not affect the range of iris values when the camera is in automatic exposure mode. Workaround is to control iris directly from the DashBoard UI. (CI-188)
- When connecting to a Sony BRC-X1000 camera from DashBoard and switching from manual exposure to auto exposure with no change in exposure settings (iris, shutter, gain) there is a small but noticeable change in light levels in the video SDI output. This appears to be caused by the camera itself. (CI-169).
- Shutting down DashBoard and then immediately restarting it may occasionally result in failure to connect to any PTZ Cameras in the DashBoard tree. If this happens, the recommended resolution is to stop and restart DashBoard, ensuring that it has completely shut down before restarting it. Connectivity problems can also occur if two applications on a workstation are both attempting to connect to VISCA cameras using UDP connections. This could be another instance of DashBoard running the DashBoard PTZ Camera control or a Ross Sony camera custom control panel, or another non-Ross application that also connects to VISCA cameras. To resolve such connectivity problems, shut down all applications connecting to the VISCA cameras and then restart a single instance of DashBoard to connect to all your cameras. Note that it is not possible to run the DashBoard PTZ Camera control alongside a Ross Sony camera custom control panel even if they are hosted on the same instance of DashBoard and connecting to different cameras. (CI-238)

- It is not possible to set the UDP Direct Control Address when configuring the Furio gateway for a PTZ Camera Controller in DashBoard when running on a Linux operating system. If you wish to use the Furio gateway functionality of the PTZ Camera plugin, use of Windows or Mac is required. (CI-739)
- The button for One Push Auto Focus is not properly disabled when Auto Focus is On. This is visual only, so clicking One Push Auto Focus when Auto Focus is On will not impact the camera. (CI-874)
- The wiper controls on the Preset and PTZ pages for the Panasonic AW-HR140 do not have a label – this was done by design. (CI-912)
- The Up and Down buttons for adjusting Color Temperature do not work for Panasonic AW-HR140 cameras when White Balance mode is set to VAR. (CI-924)

## SYSTEM CONFIGURATION

- When installing your DashBoard client, if you experience communication issues and are running anti-virus software, consult your I.T. department.

## JAVAFX SELECTION ISSUE

- Selecting JavaFX as the browser implementation in DashBoard preferences or directly in the <browser/> tag returns the incorrect browser type on Windows and MacOS. Use of this option should be avoided in DashBoard 9.7.0. (DASH-4639)

## MACOS 15 ISSUES

- When disabling JxBrowser in DashBoard Preferences on MacOS 15, DashBoard goes into a restart loop. Disabling JxBrowser on MacOS 15 should be avoided in DashBoard 9.12. (DASH-5130)
- The Ultrix Layout Editor will not load after being closed and reopened on MacOS 15. This issue occurs across DashBoard versions and regardless of DashBoard browser settings. (DASH-5129)

## GETTING HELP

- Help documentation is available directly in DashBoard, and can be found by navigating to the to menu, under **Help > Help Contents**. You can also download the guides in PDF format from the DashBoard product page on the [Ross Video website](#) under **Downloads**.
- Our 24-hour hotline service provides access to technical expertise around the clock. After-sales service and technical support is provided directly by Ross Video personnel.
- During business hours (Eastern Standard Time), technical support personnel are available by telephone.
- After hours and on weekends, emergency technical support is available. A telephone-answering device will provide the names and phone numbers of technical support and field service personnel who are on call. These people are available to react to any problem and to do whatever is necessary to ensure customer satisfaction. For serious issue which need urgent attention and tracking, please ensure you are given a ticket number and refer to this in future communications.
  - **Technical Support: (+1) 613-652-4886**
  - **After Hours Emergency: (+1) 613-349-0006**