

VERSION 12.5.0

JULY 2025

Product Release Notes

Streamline Pro

ROSS

STREAMLINE PRO RELEASE NOTES

Welcome to the Streamline Pro v12.5.0 Release Notes. Please read this document to find important information on areas of Streamline Pro that may not be covered in the Getting Started Guide or the User Help system.

CONTENTS

VERSION HISTORY 2

 VERSION 12.5.0 – JULY 2025 2

 VERSION 12.4.0 – MARCH 2025 4

 VERSION 12.3.0 – OCTOBER 2024 6

 VERSION 12.2.0 – AUGUST 2024 8

 VERSION 12.1.0 – JULY 2024 9

 VERSION 12.0.0 – JUNE 2024 11

 VERSION 11.2.1 – OCTOBER 2024 14

 VERSION 11.2.0 – DECEMBER 2023 15

 VERSION 11.1.0 – SEPTEMBER 2023 18

 VERSION 11.0.0 – JUNE 2023 20

KNOWN ISSUES 23

GETTING HELP 24

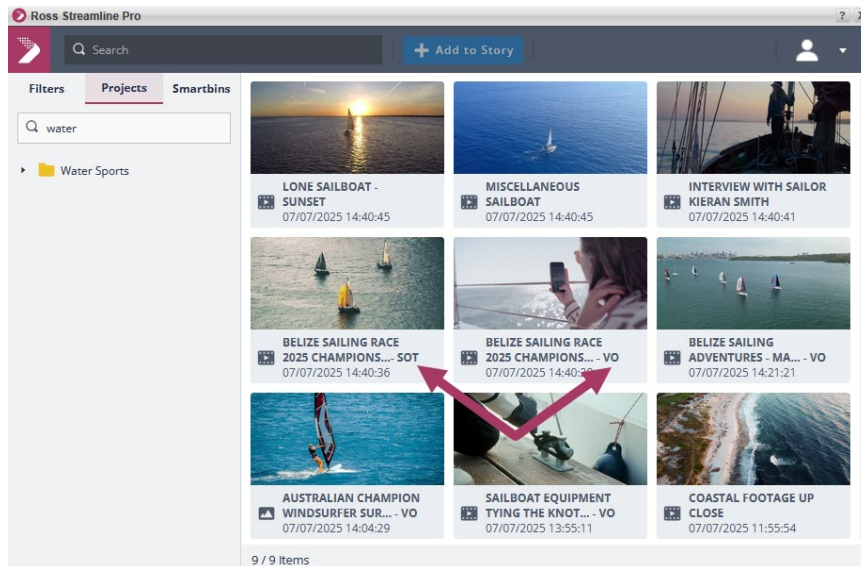
VERSION HISTORY

VERSION 12.5.0 – JULY 2025

WHAT'S NEW

- **ENHANCED ASSET NAME VISIBILITY IN ASSET BROWSER**
Asset names now show more characters with smart middle truncation, making it easier to distinguish between similarly named items (like "- SOT" vs. "- VO").

NOTE: Existing hover functionality remains unchanged.



DISPLAYS THE IMPROVED SEARCH RESULTS VIEW.

- **SECURITY IMPROVEMENTS**
Upgraded the Java™ and Jetty™ platforms to improve security. Support for multi-domain LDAP authentication.

CERTIFICATIONS

UPGRADE NOTE

If you are using EDIUS X Workgroup v10.34 or EDIUS 11 Broadcast, please ensure the appropriate plugin version is installed:

- For EDIUS X Workgroup v10.34, see **StreamlinePro11.2-EdiusX-Plugin**.
- For EDIUS 11 Broadcast, see **StreamlinePro11.2-Edius11-Plugin**.

- **OPERATING SYSTEMS**
Windows Server 2019 (Server)
Windows Server 2022 (Server)
Windows 10 (Client)
- **BROWSERS**
For Windows – Chrome 137.0 (Client)
For macOS – Chrome 137.0 and Safari 18.3 (Client)
- **EDITORS**
Adobe Premiere 2025 v25 (Windows)
- **SUPPORTED ROSS PRODUCT VERSIONS**
Streamline Xchange v10.2.0
Streamline Xchange Adobe Panel v10.2.0
Media I/O Suite v12.0
Inception v17.2
OverDrive v23.2
- **SUPPORTED THIRD PARTY PRODUCTS**
News Room Control Systems (NRCS):
AP ENPS v9.5
OCTOPUS v11

Non-linear Editors:
EDIUS X Workgroup v10.34
EDIUS v11 Broadcast

VERSION 12.4.0 – MARCH 2025

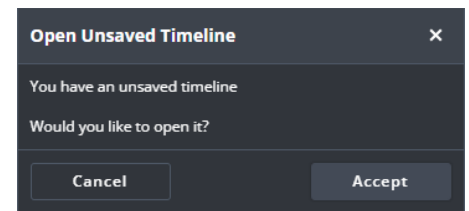
WHAT'S NEW

- **MULTI-SELECT SEGMENTS ON THE TIMELINE EDITOR**
You can now select multiple segments on the Timeline Editor by using the **Ctrl+A** shortcut on Windows, or the **CMD+A** shortcut on macOS.

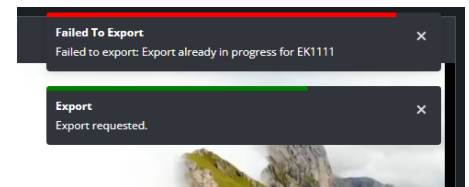


Displays Multi-selection with a Blue Highlight.

- **USABILITY IMPROVEMENTS**
 - **SAVE CHANGES TO DEFAULT TIMELINE**
If an unsaved session is closed, upon the next login you will receive a prompt asking if you wish to re-open the unsaved Timeline.
 - **PREVENT EXPORTING TO THE SAME PLACEHOLDER**
If you attempt to export to a placeholder that is already in the process of exporting, you will receive a warning prompt.



Displays 'Open Unsaved Timeline' Query



Displays 'Failed to export: Export already in progress' Notification

BUGS ADDRESSED

- Fixed an issue where the default timeline would not export in the locally configured frame rate. (SP-1421)

CERTIFICATIONS

UPGRADE NOTE

If you are using EDIUS X Workgroup v10.34 or EDIUS 11 Broadcast, please ensure the appropriate plugin version is installed:

- For EDIUS X Workgroup v10.34, see **StreamlinePro11.2-EdiusX-Plugin**.
- For EDIUS 11 Broadcast, see **StreamlinePro11.2-Edius11-Plugin**.

- **OPERATING SYSTEMS**

Windows Server 2019 (Server)
Windows Server 2022 (Server)
Windows 10 (Client)

- **BROWSERS**

For Windows – Chrome 133.0 (Client)
For macOS – Chrome 133.0 and Safari 18.3 (Client)

- **EDITORS**

Adobe Premiere 2024 v24.5 (Windows)

- **SUPPORTED ROSS PRODUCT VERSIONS**

Streamline Xchange v10.2.0
Streamline Xchange Adobe Panel v10.2.0
Media I/O Suite v12.0
Inception v17.2
OverDrive v23.2

- **SUPPORTED THIRD PARTY PRODUCTS**

AP ENPS v9.5
EDIUS X Workgroup v10.34
EDIUS 11 Broadcast

VERSION 12.3.0 – OCTOBER 2024

WHAT'S NEW

- **OPTION TO SET A DEFAULT FRAME RATE AND FRAME SIZE FOR TIMELINES**

You can now change the pre-configured system defaults for new timelines to use your preferred frame rate and default frame size.

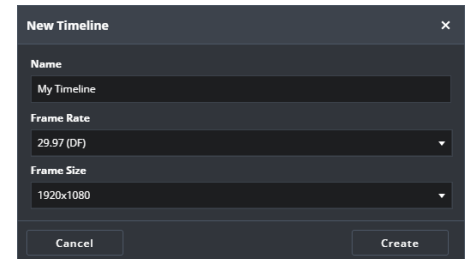
To change the default settings commissioners must add the following VM arguments:

#To set the default Frame Size

`-Dmam.asset.timeline.default_frame_size="1920x1080"`

#To set the default Frame Rate

`-Dmam.asset.timeline.default_frame_rate="29.97(df) "`



Once configured, the default options will appear when you create a New Timeline.

BUGS ADDRESSED

- Fixed an issue where the System Monitor displayed an incorrect error message on a successfully uploaded clip. (SP-1325)
- Fixed an issue where videos failed to attach via the Streamline Pro NLE Plugin. (SP-1346)
- Fixed an issue where, after logging in, the Streamline Pro Plugin would not allow the user to use certain features. (SP-1375)
- Fixed an issue that caused a segment to be added before the 00:00 point on a timeline. (SP-1386)
- Fixed an issue where the Undo button was not usable after a segment was added to a newly created timeline. (SP-1391)

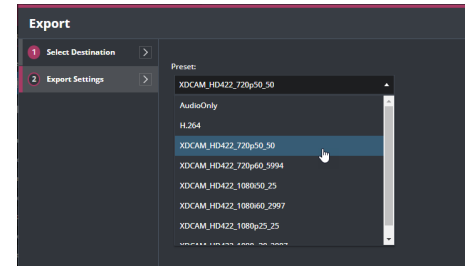
CERTIFICATIONS

- **OPERATING SYSTEMS**
Windows Server 2019 (Server)
Windows Server 2022 (Server)
Windows 10 (Client)
- **BROWSERS**
For Windows – Chrome 96.0 (Client)
For macOS – Chrome 96.0 and Safari 15.0 (Client)
- **EDITORS**
Adobe Premiere 2024 v24.5 (Windows)
- **SUPPORTED ROSS PRODUCT VERSIONS**
Streamline Xchange v10.1.7
Streamline Xchange Adobe Panel v10.1.7
Media I/O Suite v11.0
Inception v17.2
OverDrive v21.3
- **SUPPORTED THIRD PARTY PRODUCTS**
AP ENPS v9.5
EDIUS X Workgroup v10.34

VERSION 12.2.0 – AUGUST 2024

WHAT'S NEW

- **SUPPORT FOR ADDITIONAL FRAME RATE PRESETS**
You can now select from additional frame rates when you export your timeline, including 59.94fps or 50fps. You can find these new presets in the **Timeline Editor > Export** wizard under **Export Settings**.



Timeline Editor Export Wizard

CERTIFICATIONS

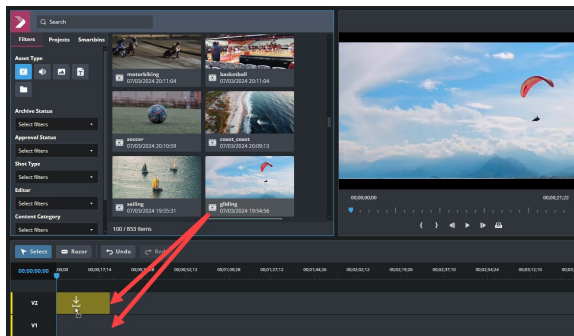
- **OPERATING SYSTEMS**
Windows Server 2019 (Server)
Windows Server 2022 (Server)
Windows 10 (Client)
- **BROWSERS**
For Windows – Chrome 96.0 (Client)
For macOS – Chrome 96.0 and Safari 15.0 (Client)
- **EDITORS**
Adobe Premiere 2024 v24.5 (Windows)
- **SUPPORTED ROSS PRODUCT VERSIONS**
Streamline Xchange v10.1.7
Streamline Xchange Adobe Panel v10.1.7
Media I/O Suite v11.0
Inception v17.2
OverDrive v21.3
- **SUPPORTED THIRD PARTY PRODUCTS**
AP ENPS v9.5
EDIUS X Workgroup v10.34

VERSION 12.1.0 – JULY 2024

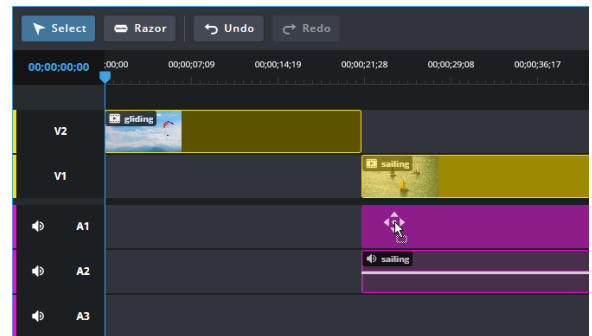
WHAT'S NEW

- **ABILITY TO MOVE VIDEO OR AUDIO CLIPS TO DIFFERENT TRACKS IN THE TIMELINE EDITOR**

You can now move video or audio clips to different tracks in the Timeline Editor of the Streamline Pro Web Video Editor.



CLIPS IN THE MEDIA BROWSER CAN NOW BE MOVED TO YOUR PREFERRED TRACK.



AN AUDIO CLIP IS MOVED FROM THE A2 TRACK TO THE A1 TRACK.

BUGS ADDRESSED

- **STREAMLINE PRO WEB VIDEO EDITOR**
- Fixed an issue where the Timeline Editor playhead was not synced to the Preview Player. (SP-748)
 - Fixed an issue where trimming or extending linked segments with different lengths trimmed the clips to the same length. (SP-1077)
 - Fixed an issue where a Timeline name set to a blank space would be accepted. (SP-1103)
 - Fixed an issue where the audio meters did not play on some segments. (SP-1137)
- Fixed an issue where the playhead stuttered during playback. (SP-1138)
 - Fixed an issue with a notification message that appeared when double-clicking on Video or Audio assets in the Media Browser panel. (SP-1148)
- Fixed an issue where opening another Timeline while the current Timeline is playing did not unload the video. (SP-1154)
- Fixed an issue where deleting the key when saving or creating a Timeline deleted the selected segment. (SP-1187)
- Changed how the audio meter calculates loudness from LUFS to dBTP. (SP-1276)

CERTIFICATIONS

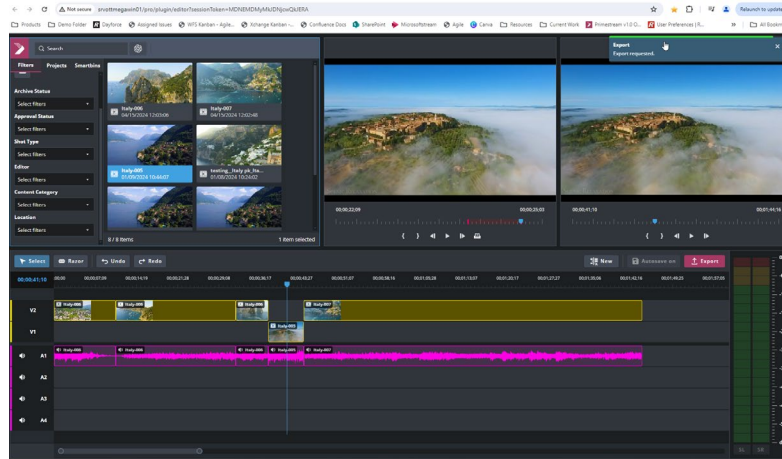
- **OPERATING SYSTEMS**
Windows Server 2019 (Server)
Windows Server 2022 (Server)
Windows 10 (Client)
- **BROWSERS**
For Windows – Chrome 96.0 (Client)
For macOS – Chrome 96.0 and Safari 15.0 (Client)
- **EDITORS**
Adobe Premiere 2024 v24.5 (Windows)
- **SUPPORTED ROSS PRODUCT VERSIONS**
Streamline Xchange v10.1.4
Streamline Xchange Adobe Panel v10.1.4
Media I/O Suite v11.0
Inception v17.1.1
Overdrive v21.3
- **SUPPORTED THIRD PARTY PRODUCTS**
AP ENPS v9.4
EDIUS X Workgroup v10.34

VERSION 12.0.0 – JUNE 2024

WHAT'S NEW

- **Streamline Pro Web Video Editor**

This lightweight editor allows you to modify hundreds of daily headlines, teases and voiceovers from your web browser. Edit content 30% faster compared to traditional industry standard tools!

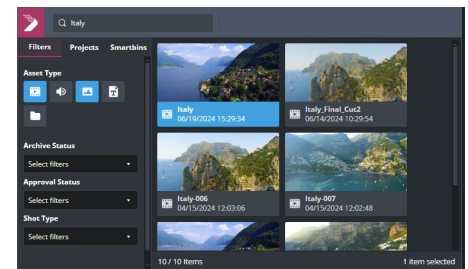


Streamline Pro Video Editor

In Streamline Xchange, to open the Video Editor simply click the Video Editor tab.

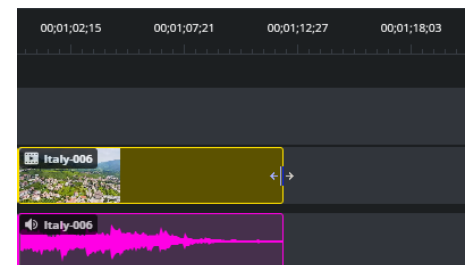
Features include:

- **Media Browser** — Media assets from your MAM are right at your fingertips. Use advanced filters and search capabilities.



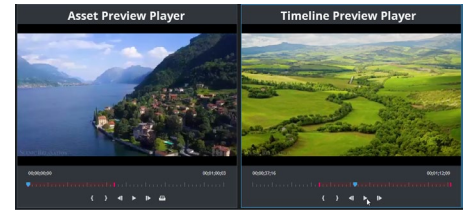
Media Browser

- **Timeline Editor** — Once content is added to the Timeline Editor, you can trim, split or re-arrange your video and audio assets.



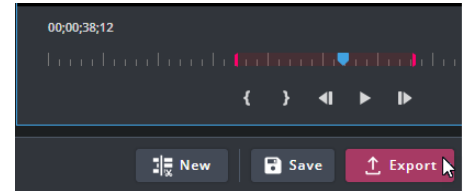
Timeline Editor

- **Asset Preview Player** — Preview assets and optionally use the **Mark In** and **Mark Out** buttons to select which part of the asset you wish to use.



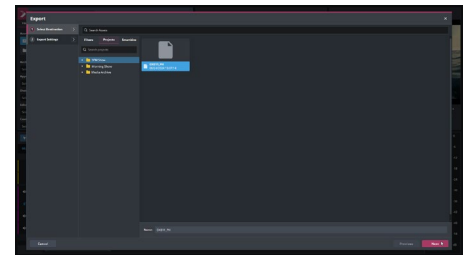
Asset Preview Player | Timeline Preview Player

- **Timeline Preview Player** — Quickly view your latest edits in the Timeline Preview Player, and use the **Mark In** and **Mark Out** buttons to select which part of the video you wish to export.



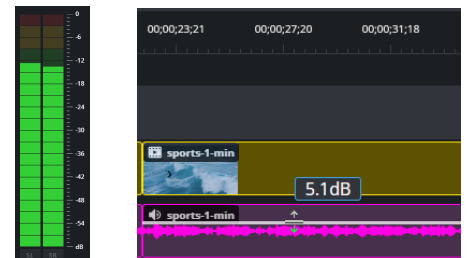
Timeline Preview Player Menu

- **Support for Existing Streamline Workflows** — Seamlessly open the Video Editor in your web-browser directly from the Streamline Xchange MAM. Export your content using your preferred video codec and upload it to a placeholder in your NRCS system.



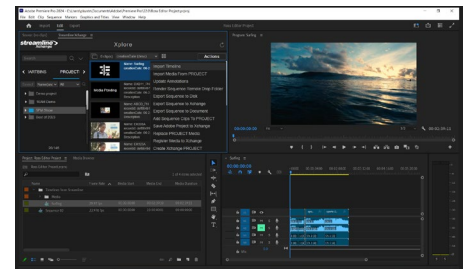
Export Wizard Dialog

- **Audio Levels**
You can preview audio levels using the **Audio Meter**, and adjust the gain using the **Audio Leveller** tool in the Timeline.



Audio Meter & Audio Leveller

- **Open Timelines in Adobe Premiere** — If you'd like to make more detailed edits to your Timeline in Adobe Premiere, simply open your imported Timeline directly in the Adobe Premiere interface.



Imported Timeline in Adobe Premiere

UPGRADE CONSIDERATIONS

- **LICENSING REQUIREMENTS**

To access the Streamline Pro Web Video Editor, you must reach out to a Ross Video Sales Representative to purchase a new license to enable the feature.

CERTIFICATIONS

UPGRADE NOTE

Streamline Pro and Streamline Xchange cannot be installed on mixed OS environments (for example, Streamline Pro on Linux and Streamline Xchange on Windows or the reverse).

- **OPERATING SYSTEMS**

Windows Server 2019 (Server)
Windows Server 2022 (Server)
Windows 10 (Client)

- **BROWSERS**

For Windows – Chrome 96.0 (Client)
For macOS – Chrome 96.0 and Safari 15.0 (Client)

- **EDITORS**

Adobe Premiere 2024 v24.5 (Windows)

- **SUPPORTED ROSS PRODUCT VERSIONS**

Streamline Xchange v10.1.3
Streamline Xchange Adobe Panel v10.1.3
Media I/O Suite v11.0
Inception v17.1.1
Overdrive v21.3

- **SUPPORTED THIRD PARTY PRODUCTS**

AP ENPS v9.4
EDIUS X Workgroup v10.34

VERSION 11.2.1 – OCTOBER 2024

BUGS ADDRESSED

- Fixed an issue where the System Monitor occasionally displayed an error message for a successfully uploaded clip. (SP-1325)
- Fixed an issue where videos failed to attach via the Streamline Pro NLE Plugin. (SP-1346)
- Fixed an issue where, after logging in, the Streamline Pro Plugin would not allow the user to use features, including loading filters, searching, and logging out. (SP-1375)

CERTIFICATIONS

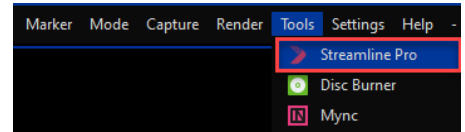
- **OPERATING SYSTEMS**
Windows Server 2019 (Server)
Windows Server 2022 (Server)
Windows 10 (Client)
- **BROWSERS**
For Windows - Chrome 96.0 (Client)
For macOS – Chrome 96.0 and Safari 15.0 (Client)
- **EDITORS**
Adobe Premiere 2022 (v22.3.1 — Build 2) (Windows)
- **SUPPORTED ROSS PRODUCT VERSIONS**
Streamline Xchange v10.1.0
Streamline Xchange Adobe Panel v10.1.0
Workflow Suite v8.2.1
Inception v16.0.0
Overdrive v21.3
- **SUPPORTED THIRD PARTY PRODUCTS**
AP ENPS v9.4
EDIUS X Workgroup v10.34

VERSION 11.2.0 – DECEMBER 2023

WHAT'S NEW

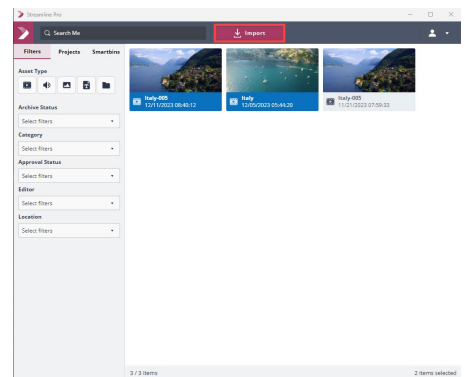
- SUPPORTS EDIUS X WORKGROUP FOR NEWS WORKFLOWS**

The Streamline Pro (NLE) Plugin now supports EDIUS news workflows. In the EDIUS interface, simply navigate to **Tools > Streamline Pro Plugin** to open it.



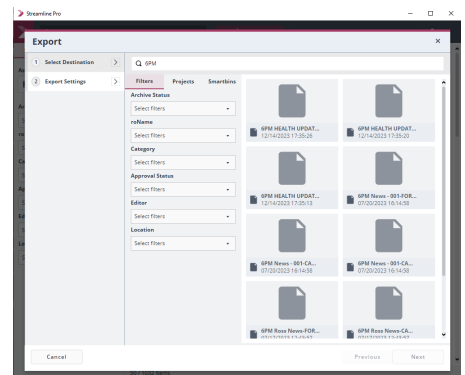
EDIUS User Interface (UI) Tools Menu
Navigate to **Tools > Streamline Pro**.

- Import Multiple Assets** — You can import one or multiple assets from the Streamline Pro Plugin.



Streamline Pro (NLE) Plugin
Displays selected assets ready for import.

- Export Wizard** — Export placeholders with ease using the Streamline Pro (NLE) Plugin's **Export** wizard.



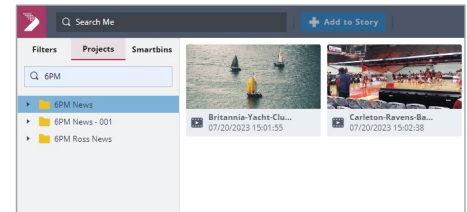
Export Wizard
In EDIUS, go to **File > Export > Print to File**. Use the **Streamline Pro Exporter Preset** and the Export wizard opens in the plugin.

- Admin Features** — Administrators can use a Windows Batch File to facilitate installation processes and use new Logging capabilities to diagnose issues.

- **USER INTERFACE ENHANCEMENTS TO STREAMLINE PRO PLUGIN (MOS & NLE*)**

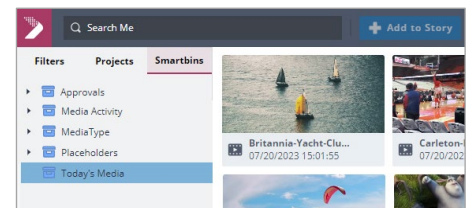
***NOTE:** The Streamline Pro plugin is available in two versions: one for MOS newsrooms, such as Ross Inception, and another for Non-Linear Editors, such as EDIUS. Features may vary based on restrictions in development with third-party applications.

- **Access to Projects** — Users can now search for assets based on their project in the **Projects** tab of the Streamline Pro (NLE) Plugin.



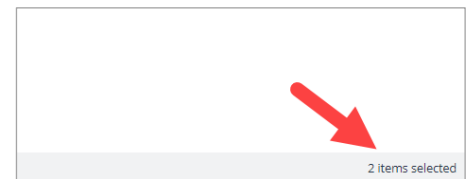
Projects Tab

- **Access to Smartbins** — Users can now search for assets using smartbins in the **Smartbins** tab of the Streamline Pro (NLE) Plugin.



Smartbins Tab

- **New Selection Counter** — A selection counter displays the number of items selected in the bottom right corner of the Streamline Pro Plugin.



Selection Counter

BUGS ADDRESSED

- Fixed an issue where assets remained selected even when the view was changed. (SP-68)
- Fixed an issue where placeholders couldn't be created from ENPS stories that exceeded 5000 characters. (SP-199)
- Fixed an issue where padding did not appear between assets in the Asset view area of the Streamline Pro (NLE) plugin. (SP-245)

CERTIFICATIONS

UPGRADE NOTE

Streamline Pro and Streamline Xchange cannot be installed on mixed OS environments (for example, Streamline Pro on Linux and Streamline Xchange on Windows or the reverse).

- **OPERATING SYSTEMS**
Windows Server 2019 (Server)
Windows Server 2022 (Server)
Windows 10 (Client)
- **BROWSERS**
For Windows - Chrome 96.0 (Client)
For macOS – Chrome 96.0 and Safari 15.0 (Client)
- **EDITORS**
Adobe Premiere 2022 (v22.3.1 — Build 2) (Windows)
- **SUPPORTED ROSS PRODUCT VERSIONS**
Streamline Xchange v10.1.0
Streamline Xchange Adobe Panel v10.1.0
Workflow Suite v8.2.1
Inception v16.0.0
Overdrive v21.3
- **SUPPORTED THIRD PARTY PRODUCTS**
AP ENPS v9.4
EDIUS X Workgroup v10.34

VERSION 11.1.0 – SEPTEMBER 2023

WHAT'S NEW

- SUPPORT FOR PLACEHOLDER WATCH FOLDER WORKFLOW

Video editors can now register a file to a placeholder using a watch folder. (PRM-1737)

- OPTION TO TURN OFF TARGET INFORMATION IN MOS OBJECT

Commissioners can use a new VM argument that, when set to `true`, allows you to disable the target information to support third party integrations that require the **objID** field. (PRM-1852)

#To set the Asset ID

```
-Dstreamline.mosobj.remove_target_info=true
```

- ENFORCE DEFAULT TARGET AS PLAYOUT LOCATION

Producers can transfer files to a playout device automatically once a rundown is monitored. Includes support for the new option to turn off target information. (PRM-1688)

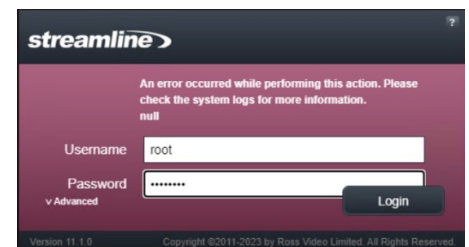
- NEW 'AssetID' OPTION IN FILE STORAGE NAMING RULES

There is a new file storage naming rule that renames the file using the asset ID instead of the name. For example, a **parachuting.mxf** file with the asset ID of **4351**, would be renamed **4351.mxf** when it's sent to storage. (PRM-1837)

BUGS ADDRESSED

- Fixed a usability issue affecting large monitors, where the scroll bar malfunctioned when the search criteria matched 50 or more assets. (PRM-1767)

- Fixed a login issue, where administrators attempting to log in to Streamline Pro without configuring the settings to use Streamline Xchange triggered an error. (PRM-1788)



Error Message

- Fixed a placeholder error, where placeholders with the same name in a rundown fails on the second time. (PRM-1836)

CERTIFICATIONS

UPGRADE NOTE

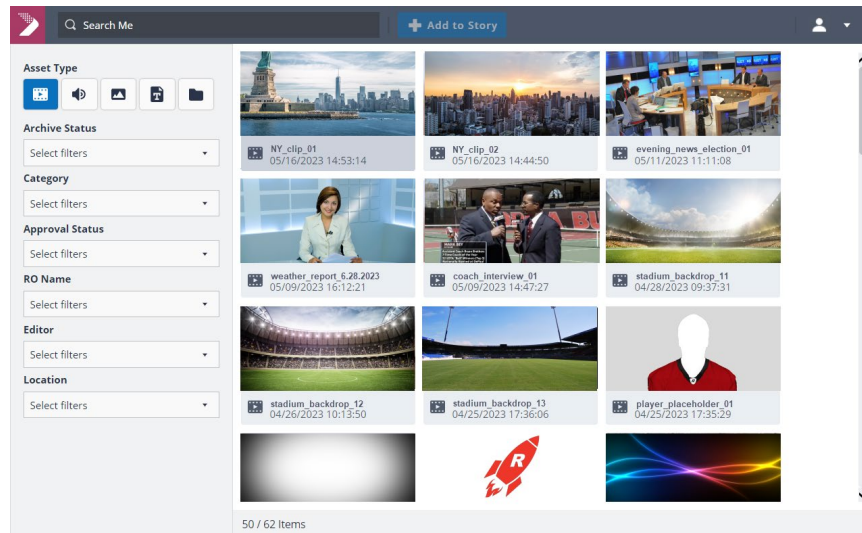
Streamline Pro and Streamline Xchange cannot be installed on mixed OS environments (for example, Streamline Pro on Linux and Streamline Xchange on Windows or the reverse).

- **OPERATING SYSTEMS**
Windows Server 2019 (Server)
Windows Server 2022 (Server)
Windows 10 (Client)
- **BROWSERS**
For Windows - Chrome 96.0 (Client)
For macOS – Chrome 96.0 and Safari 15.0 (Client)
- **EDITORS**
Adobe Premiere 2022 (v22.3.1 — Build 2) (Windows)
- **SUPPORTED ROSS PRODUCT VERSIONS**
Streamline Xchange v10.0.6
Streamline Xchange Adobe Panel v10.0.6
Workflow Suite v8.2.1
Inception v15.7.1
Overdrive v21.3
- **SUPPORTED THIRD PARTY PRODUCTS**
AP ENPS v9.3, v9.4

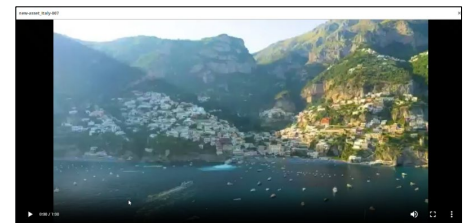
VERSION 11.0.0 – JUNE 2023

WHAT'S NEW

- STREAMLINE PRO**
 Streamline Pro is a Media Asset Management (MAM) platform that leverages our existing Streamline Xchange MAM and Streamline Classic system to provide an end-to-end news workflow for video playback.
- STREAMLINE PRO MOS PLUGIN**
 Streamline Pro MOS plugin provides a simple interface for your video content creation and playout workflows.



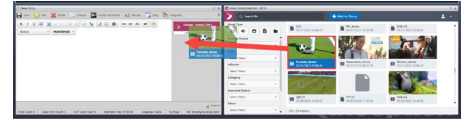
- SUPPORT FOR MOS PRODUCTION WORKFLOWS**
 Integrates with Ross Inception and AP ENPS newsrooms for video content delivery.
- MEDIA PLAYER FOR ASSET PREVIEWS**
 Media player displays previews of the selected video asset.



Media Player

Displays a preview of the selected video clip.

- **ADD ASSET TO STORIES VIA DRAG AND DROP**
Intuitive drag and drop of assets into Inception Newsroom stories.

**Inception News UI**

Displays a user adding assets from Streamline Pro into an Inception newsroom story.

- **SEARCH TOOL AND FILTER**
Search by unique ID, category, or any of your custom fields. Filtering allows you to ensure that only assets that meet your preferred search criteria will appear in the results.
- **ROSS INTEGRATION**
Streamline Pro offers compatibility with the following Ross Video products including Media I/O, Workflow Suite, and Streamline Xchange. See the [CERTIFICATIONS](#) section below for more details on supported Ross Video products and other vendors.

CERTIFICATIONS

- **OPERATING SYSTEMS**
Windows Server 2019 (Server)
Windows Server 2022 (Server)
Windows 10 (Client)
- **BROWSERS**
For Windows - Chrome 96.0 (Client)
For macOS – Chrome 96.0 and Safari 15.0 (Client)
- **EDITORS**
Adobe Premiere 2022 (v22.3.1 — Build 2) (Windows)
- **SUPPORTED ROSS PRODUCT VERSIONS**
Streamline Xchange v10.0.5
Workflow Suite v8.1.0
Inception v15.7.1
Overdrive v21.3
Streamline Xchange Adobe Panel v10.0.5
- **SUPPORTED THIRD PARTY PRODUCTS**
ENPS v9.3

REQUIREMENTS

- **SSL CERTIFICATE REQUIREMENTS**

Due to browser security constraints Streamline Pro web client requires that you have a secure SSL setup. Administrators can find instructions to configure SSL certificates in the Streamline Pro Installation Guide.

IMPORTANT:

If you do not have the proper SSL certificates installed your web browser may display a certificate authority error message and prevent you from connecting to your web client URL. If you bypass the error, you may experience issues with the search results — including a lack of results appearing, or issues with the displayed Images and Thumbnails.

KNOWN ISSUES

Please refer to the list below for any known issues that were identified at the time of the Streamline Pro release. This list is updated with each release, and resolved issues are removed.

- **OVERDRIVE**
Thumbnails for fulfilled placeholders in OverDrive may occasionally require a refresh to appear. (PRM-2014)

GETTING HELP

- Streamline Pro's Online Help system opens in your default web browser.
- Our 24-hour hotline service provides access to technical expertise around the clock. After-sales service and technical support is provided directly by Ross Video personnel.
- During business hours (Eastern Standard Time), technical support personnel are available by telephone.
- After hours and on weekends, emergency technical support is available. A telephone-answering device will provide the names and phone numbers of technical support and field service personnel who are on call. These people are available to react to any problem and to do whatever is necessary to ensure customer satisfaction. For serious issue which need urgent attention and tracking, please ensure you are given a ticket number and refer to this in future communications.
 - **Technical Support: (+1) 613-652-4886**
 - **After Hours Emergency: (+1) 613-349-0006**