

## VDCP Settings

This document will describe how to configure the VDCP settings on the **BlackStorm**, **XPression Clips** & **Click Effects** servers.

### XPression Clips Server

1. Open the **XPression Media Control Gateway – Settings** dialog box.

The name/value placed in the **Host** field is what is used to call the server.

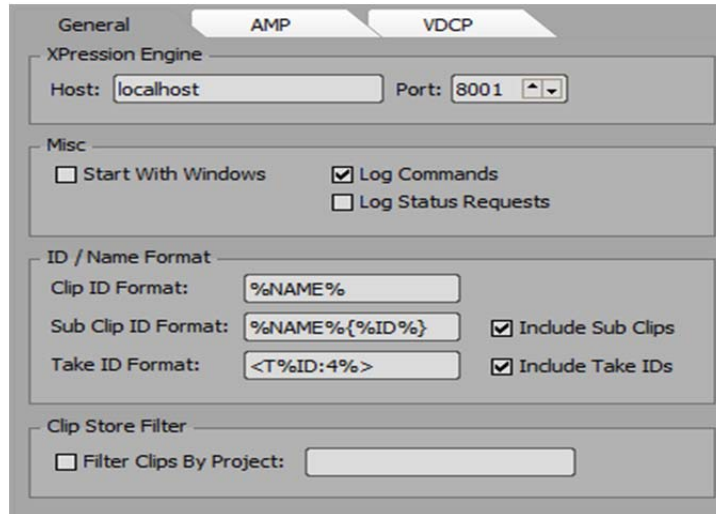


Figure 1 : General Tab

2. Click the **VDCP** tab.

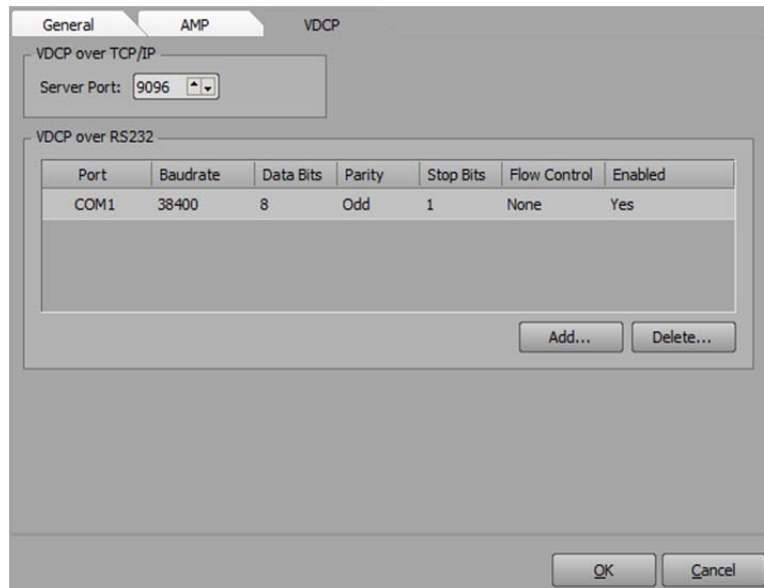


Figure 2 : VDCP Tab

3. Configure the VDCP connection settings as required:

### VDCP over TCP/IP

- In the **VDCP over TCP/IP** section, use the **Server Port** box to enter or select the port number for the TCP/IP server connection. The default is 9096.

### VDCP over RS232

- In the **VDCP over RS232** section, click **Add** to add a port for the **RS232** connection. Use the **Port** list to select a **COM** port for the connection. Then Click **OK**.

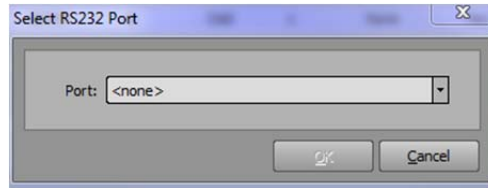


Figure 3 : COM port

- Configure the connection settings if necessary on the **VDCP over RS232** connections list. Then click **OK**.

## BlackStorm Server

1. Open the **Configuration Client** from the **BlackStorm** sub tree in **DashBoard**.

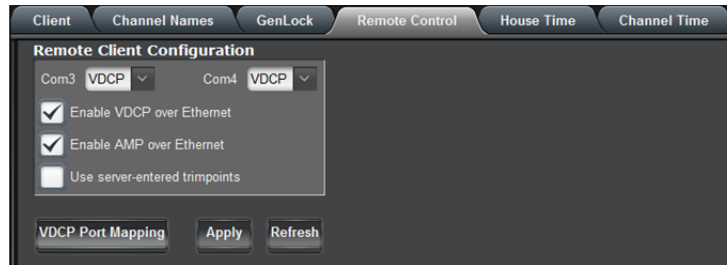


Figure 4 : Remote Control Tab

2. Check the **Enable VDCP over Ethernet** option.
3. Click **VDCP Port Mapping**.

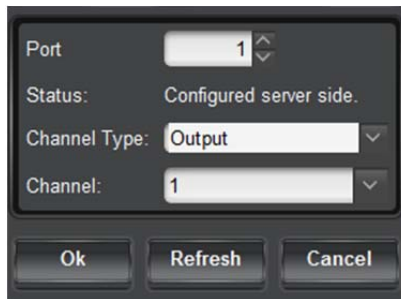


Figure 5 : Port Mapping

#### 4. Change the **Channel Type** to **Output**.

- In the Port Mapping window, if you want to open another port you must open it on a new channel.
- ★ If the port is on channel 1 and you want access it from an outside source you need to set the port of the outside source to 50103. If the port created in BlackStorm is on channel 2 then the outside source port should be 50104. For every channel after you would just add 1 to the outside source value to access the channel.

#### 5. Click **OK**

- You will be asked to restart the BlackStorm to apply the new changes.

## ClickEffects Server

### Enabling and Configuring VDCP

1. Navigate to the Com Port Settings window. Select the **Remote** option from the main menu on the Click Effects machine and select the Com Port you wish to edit.
2. In the Com Port Settings window, set the Protocol to **VDCP\_Louth**.

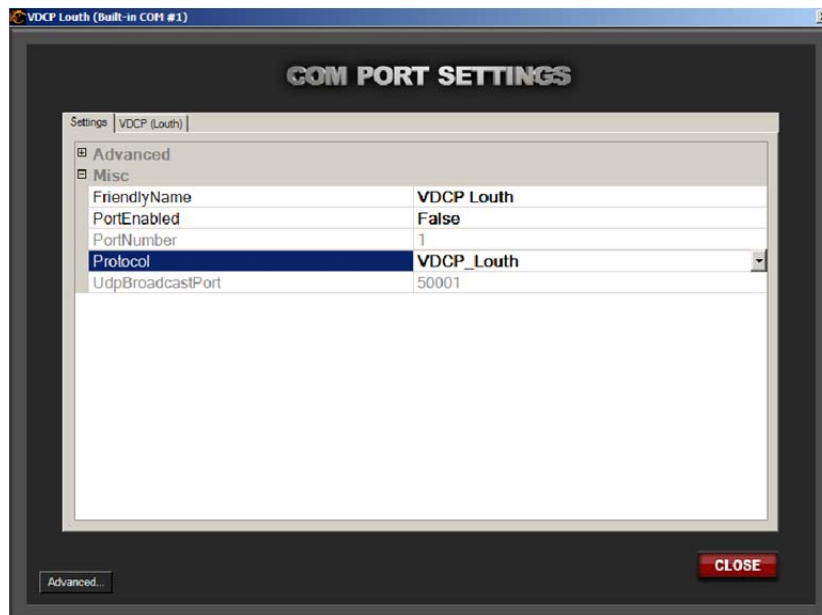


Figure 6 : COM Port Settings

3. Set the **PortEnabled** property to **True**. This will open the Com Port for communication.
4. Select the **VDCP (Louth)** tab at the top of the Com Port Settings window.
5. Click on the **VDCP Settings** header.

### VDCP over Ethernet

1. Navigate to the **Data Settings** window. Select the **Integrated** tab, and select **VDCP over Ethernet** from the list. Click on **Settings** to open the settings window.

2. Add TCP connections by entering the IP address and the TCP port to listen on for incoming connection requests from switchers.

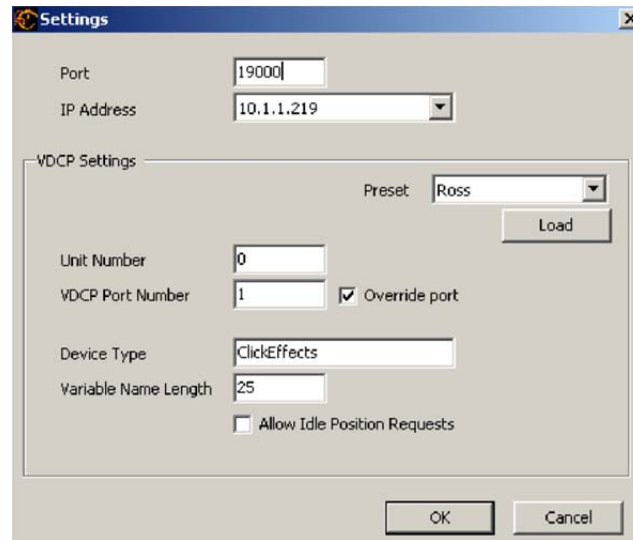


Figure 7 : VDCP Settings Window

## Further Information

### Set Up VDCP Shot Box Custom Panel with a Server

#### XPression Clips Server

On the **VDCP Shot Box CustomPanel**, in the **VDCP Out** settings fill in the **Host** field with the name placed in the **Host** field of the **General Tab** and the **Port** value should be the **Port** value that was assigned in the **VDCP** tab. Then select the **Eject on Cue** check box and deselect the **Use Continue Play** check box.

#### BlackStorm Server

On the **VDCP Shot Box CustomPanel**, in the **VDCP Out** settings fill in the **Host** field with the **IP address** of the **BlackStorm**. The **Port Value** is dependent on the **Port Mapping** setup (Figure 5). The **Channel** option should match the **Channel** value in the **Port Mapping** setup (Figure 5). Then select the **Eject on Cue** check box and deselect the **Use Continue Play** check box.

#### ClickEffects Server

On the **VDCP Shot Box CustomPanel**, in the **VDCP Out** settings fill in the **Host** field with the **IP address** of the **Click Effects** server and the **Port** value should be the **Port** value that was assigned in the **VDCP** settings window (Figure 7). Then select the **Use Continue Play** check box and deselect the **Eject on Cue** check box.

### Copyright Notice

© 2015 Ross Video Limited. Ross® and any related marks are trademarks or registered trademarks of Ross Video Limited. All other trademarks are the property of their respective companies. PATENTS ISSUED and PENDING. All rights reserved. No part of this publication may be reproduced, stored in a retrieval system, or transmitted in any form or by any means, mechanical, photocopying, recording, or otherwise, without the prior written permission of Ross Video. While every precaution has been taken in the preparation of this document, Ross Video assumes no responsibility for errors or omissions. Neither is any liability assumed for damages resulting from the use of the information contained herein.