

Configuring the XPression Gateway for XPression Maps

The following procedures will guide you through the XPression Gateway Settings for XPression Maps. This configuration must also be done on all the Offline Render Engines on the XPression Gateway and any XPression Engine or Design workstations which will access XPression Maps at Payout or as part of the design process.

XPression Maps requires XPression and XPression Gateway software versions 5.9 or higher.

To configure the XPression Gateway for XPression Maps:

1. From the **Windows Start** menu, launch the XPression Gateway.

The XPression Gateway opens.

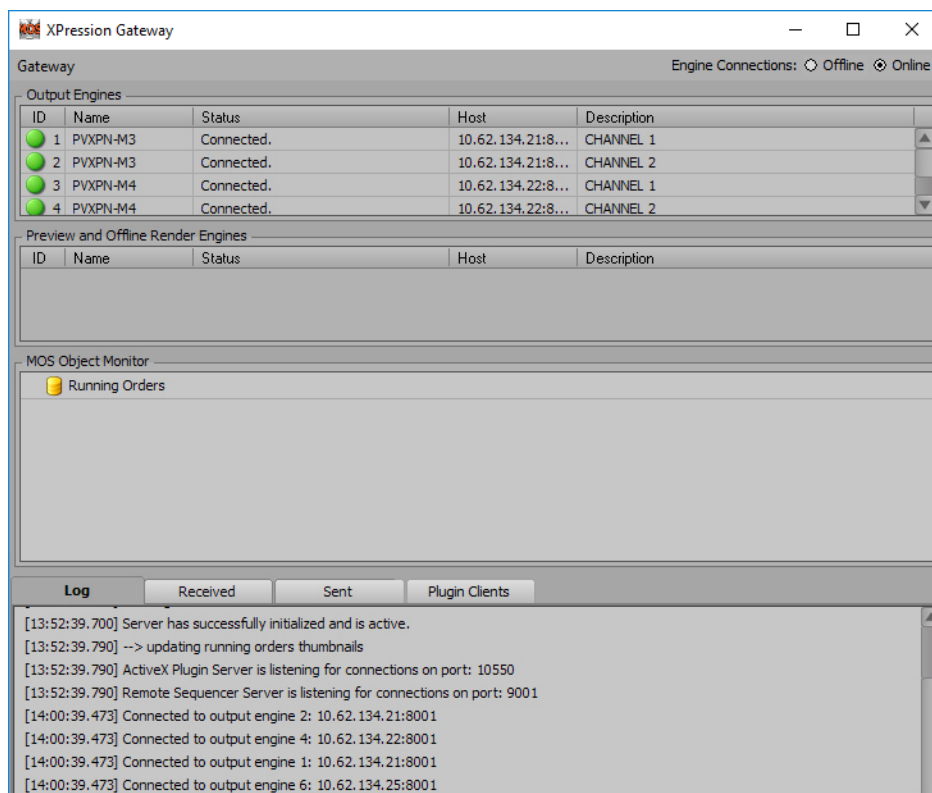


Figure 3.1 XPression Gateway User Interface

XPression Maps

2. Click the **Gateway** menu and select **Settings**.

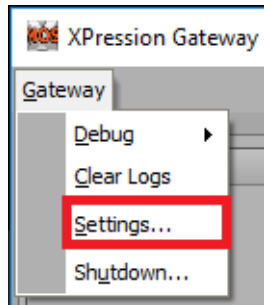


Figure 3.2 Gateway Menu

The **XPression Gateway - Settings** dialog box opens.

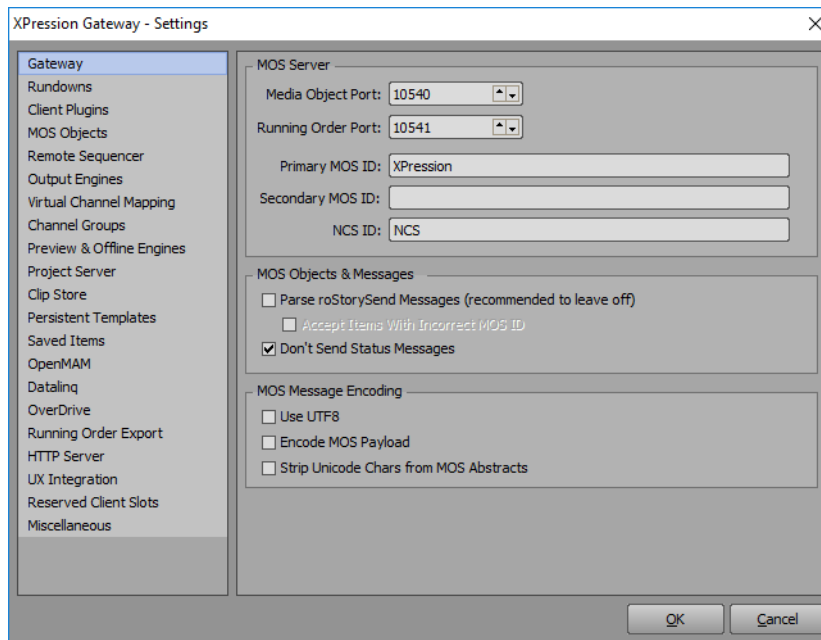


Figure 3.3 XPression Gateway - Settings

3. Select **OpenMAM**.

XPression Maps

The **OpenMAM** section opens.

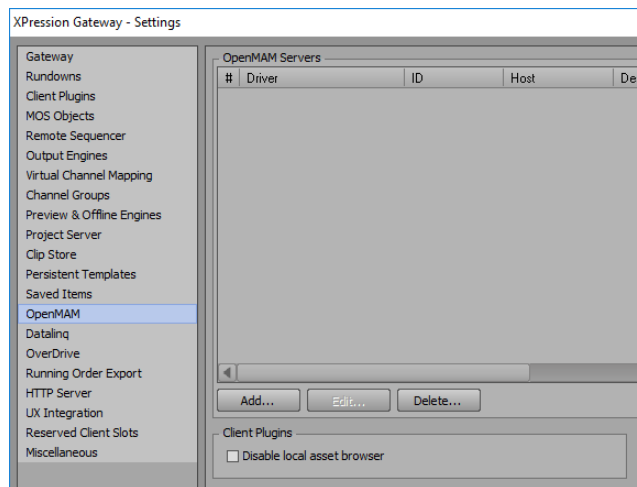


Figure 3.4 Settings - OpenMAM

4. In the **OpenMAM Servers** section, click **Add**.
The **Add OpenMAM Server** dialog box opens.

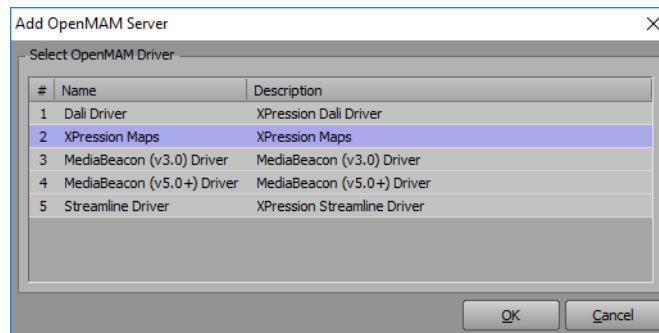


Figure 3.5 Add OpenMAM Server

5. From the **Select OpenMAM Driver** list, select **XPression Maps** and click **OK**.
The **XPression Maps Server** dialog box opens.

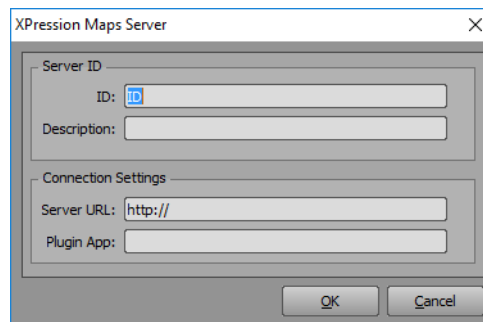


Figure 3.6 XPression Maps Server

6. In the **Server ID** section, enter the following information:
 - **ID** – the name of the computer on which the XPression Maps server software is installed.
 - **Description** – a brief description for identification for end users. This is helpful in the event that there are multiple servers.

XPression Maps

7. In the **Connection Settings** section, enter the following information:

- **Server URL** – the URL from which the system retrieves the various elements that are created.
- **Plugin App** – the location on the Newsroom Computer System (NRCS) users' desktops where the XPression Maps Web Client is installed.

The default location for the XPression Maps Web Client is: **C:\XPressionMapsWebClient\XPressionMapsWebClient.exe**

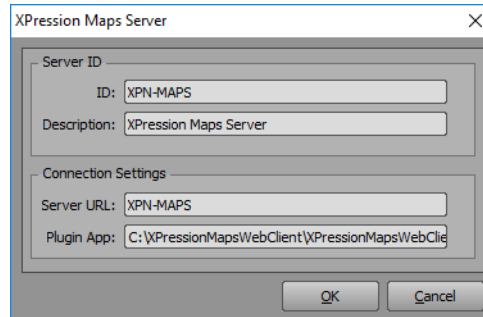


Figure 3.7 XPression Maps Server Settings

8. Click **OK**.

The XPression Maps server is added to the **OpenMAM Servers** list.

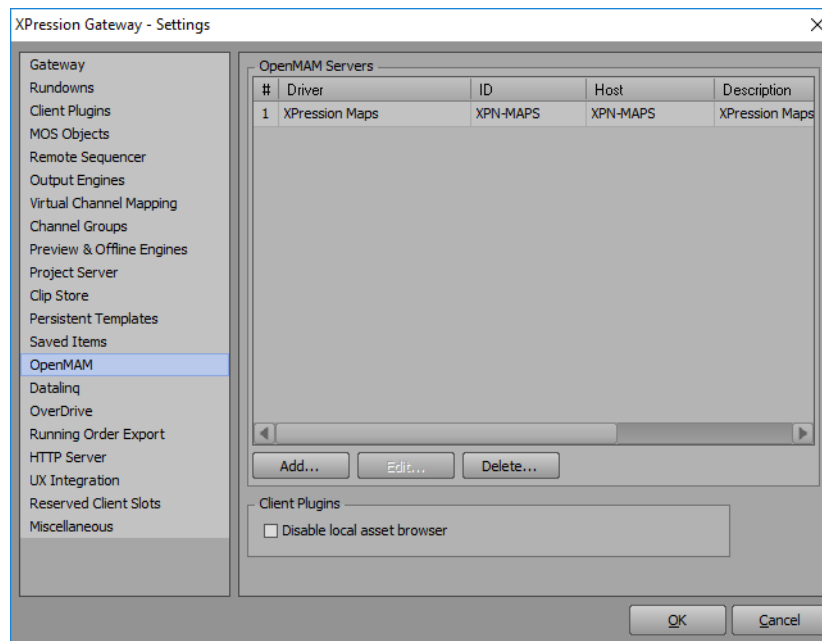


Figure 3.8 OpenMAM Servers List

9. Click **OK**.