

Configuring XPression Maps to Use Mapbox Services

XPression Maps can be configured to use **Mapbox** as its external map service provider. Once connected to a valid Mapbox account, XPression Maps integrates with Mapbox services to perform various tasks such as geolocation searches and retrieving map imagery tiles of various styles, including satellite views.

- ★ XPression Maps supports integration with several third-party map service providers, which require customer-managed, pay-as-you-go subscription accounts. Ross Video does not offer billing integration with these vendors; all transactions are handled via the API Key provided by the customer.

Customers are fully responsible for setting up and managing subscriptions, payments, and account details directly with each third-party provider. Ross Video does not participate in any billing or commercial arrangements with these services.

Overview of the Configuration Process

To configure XPression Maps to use Mapbox services:

1. Open the **Mapbox** web page.
2. Create a new account or sign in with your existing account.
See [Creating a Mapbox Account](#) ².
3. Generate an access token and save a copy of the Mapbox access token locally.
See [Creating a Mapbox Access Token](#) ².
4. Launch the **XPression Maps** application.
5. In the **Preferences > Connections** window, enter and validate the access token, then set both the **Search** and **Base Maps** fields to **Mapbox**.
See [Configuring the External Provider Settings in XPression Maps](#) ³.
6. Save the changes and close the **Preferences** window.
7. Restart **XPression Maps**.

Mapbox is now the assigned external mapping service provider.

Creating a Mapbox Account

Mapbox is a suite of cloud-based map and location services. If you don't already have Mapbox account, perform the following procedure to create a new account.

To create a new Mapbox account:

1. Open the **Mapbox** web page at <https://www.mapbox.com/>.
2. Select **Sign up**.
3. On the **Create your account** page, enter the information for your new account and select **Create Account**.
4. On the **Payment Information** page, enter the payment information for your new account and select **Create Account**.
5. On the **Check your email** page, follow the instructions to verify your email, including entering your account password, confirming the billing information and completing a preferences survey.

You are now signed into your **Mapbox dashboard** page.

Creating a Mapbox Access Token

A Mapbox API access token is required to establish a connection and authenticate requests from XPression Maps.

To generate and acquire a copy of the access token from your Mapbox account:

1. Open the [Mapbox web page](#) and select **Log in** to access your Mapbox account.
2. In the **Access tokens** section, select the **Copy** icon in the **Default Public token** field.
3. Save the access token code in a text file. You'll need it to configure XPression Maps.

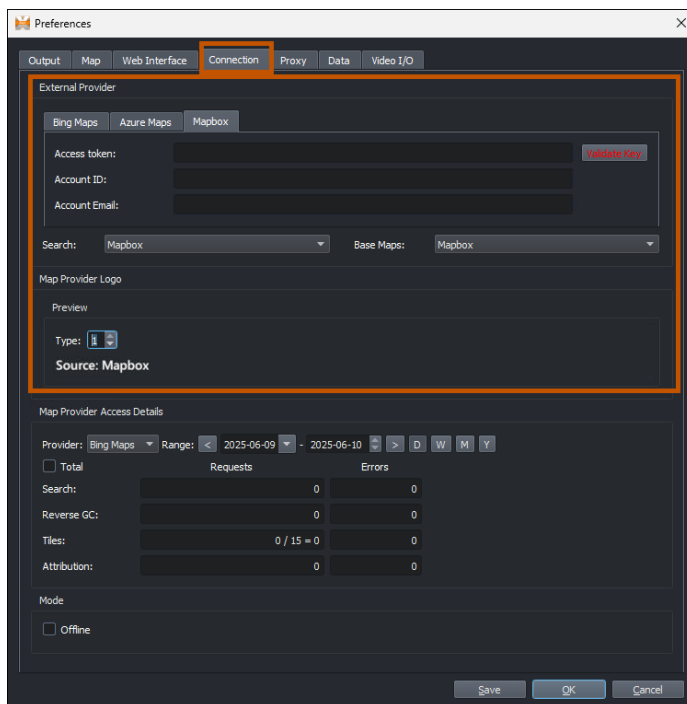
Configuring the External Provider Settings in XPression Maps

To integrate XPression Maps with Mapbox services, you need to connect it to your Mapbox account and specify **Mapbox** as the provider for location searches and base maps.

★ A copy of the access token from your Mapbox account is required. See [Creating a Mapbox Access Token](#)² for instructions.

To configure the XPression Maps External Provider settings:

1. Open **XPression Maps** and select **File > Preferences**.
2. Select the **Connection** tab.
3. In the **External Provider** section, select the **Mapbox** tab.



Preferences - Connection - Mapbox

4. In the **Access token** field, paste the access token you copied from your Mapbox account.

The **Account ID** and **Account Email** fields are optional and are provided for the user to keep track of the account and email address under which the application key is running.

5. Then select **Validate Key** to check if the key is working.

If the key is working the button turns green and changes to **Key is valid**.



6. In the **Search** field, select **Mapbox** as the location service provider used by the **Search Editor** tool in XPression Maps.
7. In the **Base Maps** field, select **Mapbox** as a maps tiles provider for certain map styles integrated in XPression Maps.
8. In the **Maps Provider Logo** field, select the style of the Mapbox logo that will appear on the map output.
9. Select **Save**, then **OK**.
10. Restart XPression Maps to apply the changes.