

XPression



www.rossvideo.com

ROSS

Thank You for Choosing Ross


You've made a great choice. We expect you will be very happy with your purchase of Ross Technology.

Our mission is to:

1. Provide a Superior Customer Experience
 - offer the best product quality and support
2. Make Cool Practical Technology
 - develop great products that customers love

Ross has become well known for the Ross Video Code of Ethics. It guides our interactions and empowers our employees. I hope you enjoy reading it below.

If anything at all with your Ross experience does not live up to your expectations be sure to reach out to us at solutions@rossvideo.com.

A handwritten signature in black ink that reads "David Ross". The signature is stylized, with the first letters of the first and last names being capitalized and prominent.

David Ross
CEO, Ross Video
dross@rossvideo.com

Ross Video Code of Ethics

Any company is the sum total of the people that make things happen. At Ross, our employees are a special group. Our employees truly care about doing a great job and delivering a high quality customer experience every day. This code of ethics hangs on the wall of all Ross Video locations to guide our behavior:

1. We will always act in our customers' best interest.
2. We will do our best to understand our customers' requirements.
3. We will not ship crap.
4. We will be great to work with.
5. We will do something extra for our customers, as an apology, when something big goes wrong and it's our fault.
6. We will keep our promises.
7. We will treat the competition with respect.
8. We will cooperate with and help other friendly companies.
9. We will go above and beyond in times of crisis. *If there's no one to authorize the required action in times of company or customer crisis - do what you know in your heart is right. (You may rent helicopters if necessary.)*

XPression • Quick Install Guide

- Ross Part Number: **3500DR-006-08**
- Release Date: **July 4, 2019.**

Printed in Canada.

The information contained in this Guide is subject to change without notice or obligation.

Copyright

© 7/4/19 **Ross Video Limited.** All rights reserved.

©2019 Ross Video Limited, Ross®, and any related marks are trademarks or registered trademarks of Ross Video Limited. All other trademarks are the property of their respective companies. PATENTS ISSUED and PENDING. All rights reserved. No part of this publication may be reproduced, stored in a retrieval system, or transmitted in any form or by any means, mechanical, photocopying, recording or otherwise, without the prior written permission of Ross Video. While every precaution has been taken in the preparation of this document, Ross Video assumes no responsibility for errors or omissions. Neither is any liability assumed for damages resulting from the use of the information contained herein.

Patents

Patent numbers US 7,034,886; US 7,508,455; US 7,602,446; US 7,802,802 B2; US 7,834,886; US 7,914,332; US 8,307,284; US 8,407,374 B2; US 8,499,019 B2; US 8,519,949 B2; US 8,743,292 B2; GB 2,419,119 B; GB 2,447,380 B; and other patents pending.

Notice

The material in this manual is furnished for informational use only. It is subject to change without notice and should not be construed as commitment by Ross Video Limited. Ross Video Limited assumes no responsibility or liability for errors or inaccuracies that may appear in this manual.

Contents

Chapter 1: System Configuration

Minimum System Requirements **2**

Chapter 2: Software Installation

Requirements **6**

Pre-Configuration for Windows 10 **6**

Software Licensing **17**

Software Installation **18**

First Launch **30**

Chapter 3: Your First XPression

Creating with XPression **36**

System Configuration

Minimum System Requirements

XPression products are based on mainstream PC hardware using the Windows® operating system. To ensure that XPression software will function correctly, verify that the computer selected to run XPression software meets the recommended minimum hardware configuration.

To verify a computer for XPression, complete the following steps:

- 1.** Verify that the computer meets the following minimum hardware specifications:
 - Intel® CPU i7 7800X 6 Cores 3.5GHz
 - 8 GB DDR4 RAM
 - GTX 1070 8GB 256-Bit GDDR5 GPU
 - Single Zippy® HU2-5760V power supply - 750watt
 - AJA® CorVid22 2Ch SD/HD/3G IO (for Studio, Player, BlueBox, and Prime)
 - 500 MB free disk space
- 2.** Verify that the computer meets the following software specification:
 - Microsoft® Windows® 10 Pro 64-bit Operating System

2 System Configuration

3. Ensure that the operating system is updated with all the necessary security patches and service packs before installing XPression software.

A detailed hardware requirements specification sheet is available from Ross Video.

2

Software Installation

Requirements

A valid XPression installation password, a valid USB dongle, and an XPression software USB are required to install XPression software on a computer.


Before starting the installation procedure, verify that the XPression computer meets the minimum system requirements listed in the section “Minimum System Requirements” on page 2.

Pre-Configuration for Windows 10

Before installing the XPression software on a computer running Windows 10, the following security settings need to be configured:

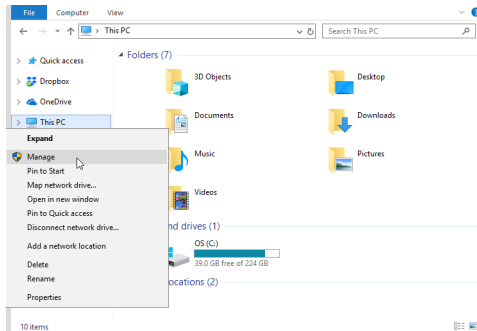
- local admin rights
- User Account Control notifications
- behavior of program elevation

To allow local admin rights, complete the following steps:

1. Click the  (Start) menu and select **Windows System > This PC**.

The **This PC** browser window opens.

2. Right-click on **This PC** and select **Manage**.

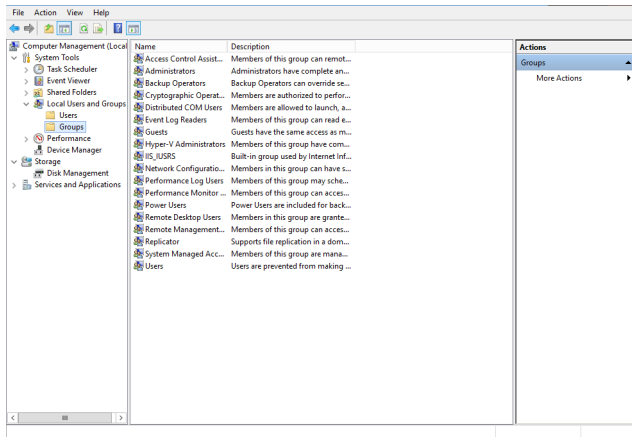


The **Computer Management** window opens.

3. Double-click **Local Users and Groups**.

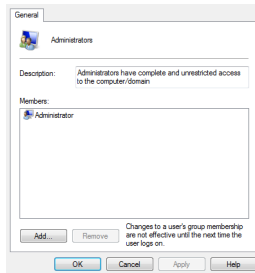
4. Double-click the **Groups** folder.

The **Groups** folder files are listed in the browsing pane of the **Computer Management** window.



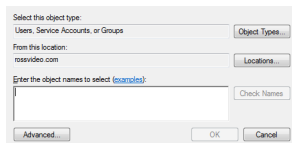
5. Double-click **Administrators.**

The **Administration Properties** window opens.




6. Click **Add.**

The **Select Users, Computers, Service Accounts, or Groups** window opens.



7. Enter a user in the **Enter the object names to select** area.
Click **Check Names** if necessary.
8. Click **OK**.

To adjust the User Account Control notification settings, complete the following steps:

1. Click the  (**Start**) menu and select **Windows System > Control Panel**.
The **Control Panel** browser window opens.
2. From the **View by** list, select **Small icons**.
The **All Control Panel Items** browser window opens.
3. Click **User Accounts**.
The **User Accounts** browser window opens.

4. Click **Change User Account Control settings.**

The **User Account Control Settings** window opens.

Choose when to be notified about changes to your computer

User Account Control helps prevent potentially harmful programs from making changes to your computer.

[Tell me more about User Account Control settings](#)

Always notify



Never notify

Default - Notify me only when programs try to make changes to my computer

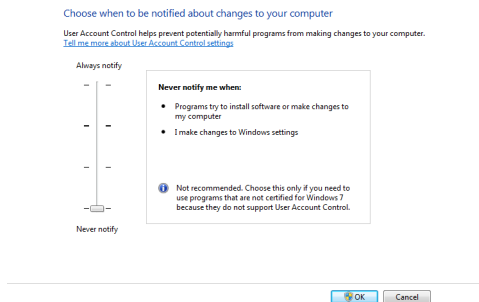
- Don't notify me when I make changes to Windows settings



Recommended if you use familiar programs and visit familiar websites.




5. Drag the notification marker to the **Never Notify** setting.



6. Click **OK**.

To change the behavior of program elevation, complete the following steps:

1. Click the  (**Start**) menu and select **Windows System > Control Panel**.

The **Control Panel** browser window opens.

2. From the **View by** list, select **Small icons**.

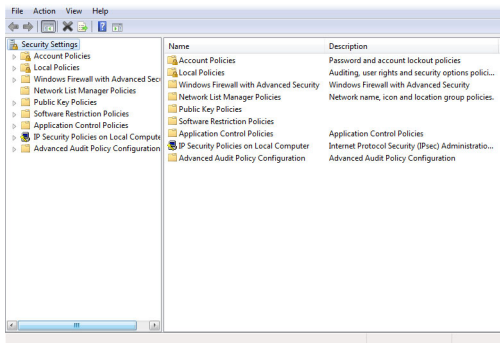
The **All Control Panel Items** browser window opens.

3. Select **Administrative Tools**.

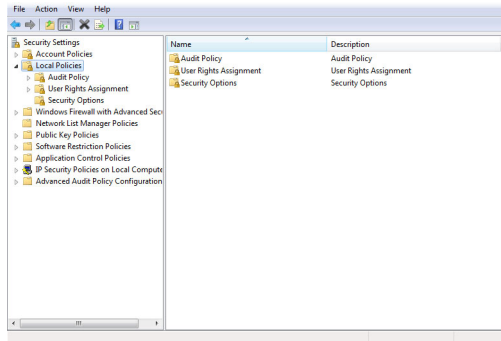
The **Administrative Tools** browser window opens.

4. Double-click **Local Security Policy**.

The **Local Security Policy** window opens.

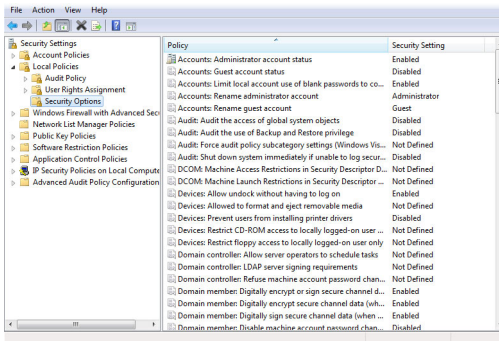


5. Double-click **Local Policies**.



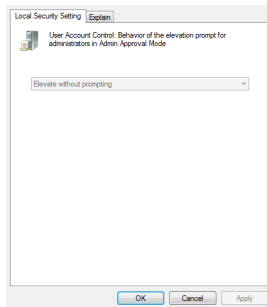
14 Software Installation

6. Double-click Security Options.



7. In the **Policies** column, double-click **User Account Control: Behavior of the elevation prompt for administrators in Admin Approval Mode**.

The **User Account Control: Behavior of the elevation prompt for administrators in Admin Approval Mode** window opens.



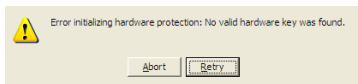
8. In the **Local Security Setting** tab, use the list to select **Elevate without prompting**.
9. Click **Apply**.
10. Click **OK**.

Software Licensing

Ross Video uses licenses to manage XPression software usage. XPression licenses are stored on a USB dongle that accompanies the XPression Software USB dongle.

Before installing XPression software, connect the XPression License USB dongle to a USB port on the XPression computer. The dongle automatically installs when connected to a USB port.

If the dongle is not connected, the following Warning opens when attempting to install XPression software:



Software Installation

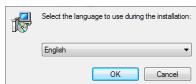
The XPression License USB dongle must be connected to the XPression computer before running the XPression software installer from the XPression Software USB dongle.

To install XPression software, complete the following steps:

1. Log on to the XPression computer as a user that can install software.
2. Shut down all Windows applications.
3. Connect the **XPression License USB** dongle to a USB port on the XPression computer.
4. Insert the **XPression Software USB** dongle into a USB port on the XPression computer.
5. Double-click the **XPRESSION** software dongle to open it from the drive it was inserted.

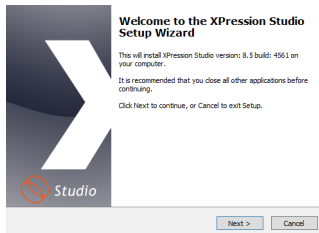
6. Double-click the XPression .exe file to launch the XPression installer.

The **Select Setup Language** screen opens.



7. Select a language from the list.
8. Click **OK**.

The **Setup - XPression Studio** wizard opens.



9. Click **Next**.

The **License Agreement** screen opens.

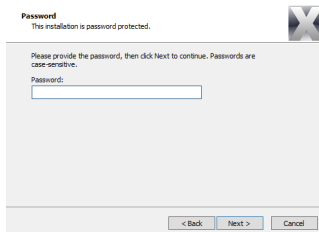


10. Read the end user license agreement.

11. Select the **I accept the agreement** option to continue the installation.

12. Click Next.

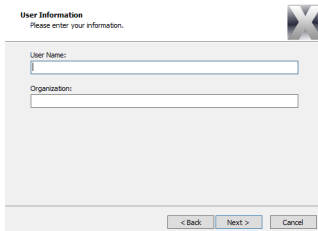
The **Password** screen opens.



13. In the Password box, enter the supplied Xpression installation password.

14. Click Next.

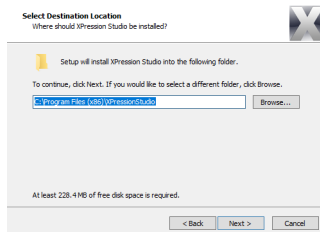
The **User Information** screen opens.

A screenshot of a 'User Information' dialog box. The title bar says 'User Information' and the subtitle says 'Please enter your information.' There is a close button (X) in the top right corner. The dialog contains two text input fields: 'User Name:' and 'Organization:'. At the bottom, there are three buttons: '< Back', 'Next >', and 'Cancel'.

- 15.** In the **User Name** box, enter the name of the XPression software user.
- 16.** In the **Organization** box, enter the name of the organization licensed to use the XPression software.

17. Click Next.

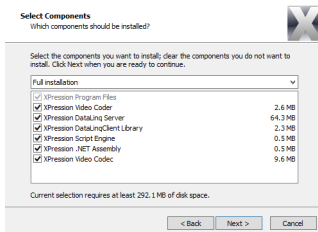
The **Select Destination Location** screen opens.



18. Accept the current installation folder or click **Browse to select a custom installation folder.**

19. Click Next.

The **Select Components** screen opens.



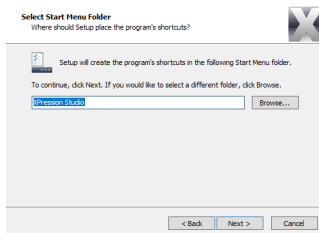
20. Accept the default XPression installation, or define a custom configuration. To define a custom configuration, select or clear the check boxes to the left of the following options:

- **XPression Video Codec** — install the video rendering engine.
- **DataLinq Server** — enable live templates to be automatically filled out using data from external sources.
- **XPression DataLinqClient Library** — install the .NET assembly for controlling DataLinq through API.
- **XPression Script Engine** — enable VB scripts to be applied to individual graphics.

- **XPression .NET Assembly** — install the .NET assembly for controlling XPression through API.
- **XPression Video Codec** — install the XPression video codec that includes alpha.

21. Click Next.

The **Select Start Menu Folder** screen opens.

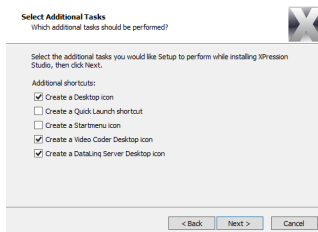


- 22.** Accept the current Start Menu folder for the XPression shortcut, or click **Browse** to select a custom Start Menu folder.

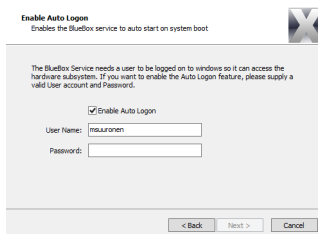
23. Click Next.

- If installing XPression Studio, Prime, Designer, Developer, or Player, the **Select Additional Tasks** screen opens.

Proceed to Step 26.



- If installing XPression BlueBox, the **Enable Auto Logon** screen opens.



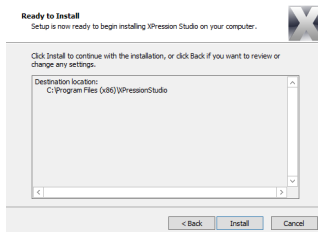
- 24.** Select or clear the **Enable Auto Logon** check box.
- 25.** In the **User Name** box, enter the name of the XPression software user.
- 26.** In the **Password** box, enter the password for the XPression software user.

Proceed to Step 27.

- 27.** Select or clear the check boxes to the left of the following options:
 - **Create a Desktop icon** — install an XPression shortcut on the desktop.
 - **Create a Quick Launch icon** — install an XPression shortcut in the Quick Launch toolbar.
 - **Create a Startmenu icon** — install an XPression shortcut in the Start menu.
 - **Create a Video Coder Desktop icon** — install a Video Coder shortcut on the desktop.
 - **Create a DataLinq Server Desktop icon** — install a DataLinq Server shortcut on the desktop.

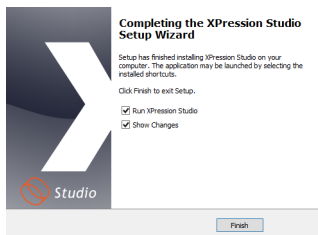
28. Click **Next**.

The **Ready to install** screen opens.



29. Click **Install** to begin installing XPression software.

A progress bar displays the installation status. After the installer finishes installing the required files, the **Completing the XPression Studio Setup** screen opens.



30. Select or clear the check boxes to the left of the following options:

- **Run XPression Studio** — start XPression Studio after finishing the software installation.
- **Show Changes** — show the change log after finishing the software installation.

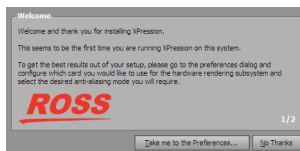
31. Click **Finish**.

First Launch

The first time XPression is run on a computer, the First Time XPression Setup wizard opens to guide you through configuring a hardware render and an output.

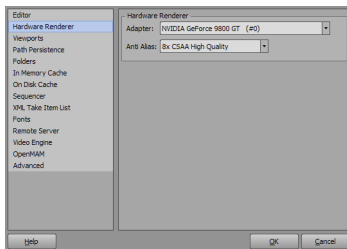
1. On the XPression computer, use the **Start** menu to select **All Programs > XPression > Designer**.

After XPression starts, the first screen of the **First Time XPression Setup** wizard opens.



2. Click **Take Me to the Preferences**.

The **Hardware Renderer** panel of the **Preferences** dialog box opens to select the graphics device used by XPression to render scenes to output framebuffers.



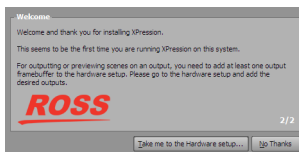
3. Use the **Adapter** list to select the graphics device installed in the XPression computer.

4. Use the **Anti-Alias** list to select the Multi-sampling value used to control the visual quality of rendered output.

The higher the multi-sampling value, the smoother the rendered the graphic edges. The <none> option is equal to 1x multi-sampling. For most situations, set the multi-sampling value according to the best quality/performance ratio, usually around 8x.

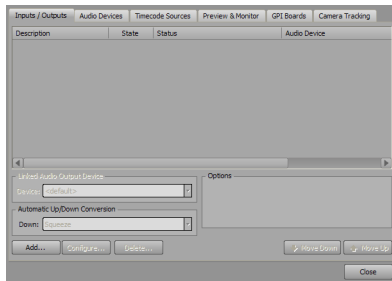
5. Click **OK**.

The the second screen of the **First Time XPression Setup** wizard opens.



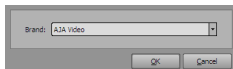
6. Click **Take Me to the Hardware Setup**.

The **Inputs / Outputs** tab of the **Hardware Setup** dialog box opens to select the output framebuffer used by XPression to output or preview scenes.



7. Click the **Add**.

The **Add New FrameBuffer Board** dialog box opens.



8. Use the **Brand** list to select **XPression Virtual FrameBuffer**.

Press **F1** to open the Help file to view information about the available framebuffers that can be configured for XPression.

9. Click **OK**.

An XPression Virtual FrameBuffer is added to the **Inputs / Outputs** tab of the **Hardware Setup** dialog box.

10. In the **Hardware Setup** dialog box, click **Close**.

The **Hardware Setup** dialog box closes to complete the First Time XPression Setup wizard.

3

Your First XPression

Creating with XPression

XPression consists of three integrated components, the scene editor for template design, the sequencer for playout, and the BlueBox engine for rendering. XPression uses virtual outputs to show an accurate and real-time preview so that you can design, create and test projects right at your desk. The procedures in the following sections will guide you through the creation of a simple project.

- ★ The procedures in this section are not applicable to the XPression™ Player and XPression™ BlueBox products.

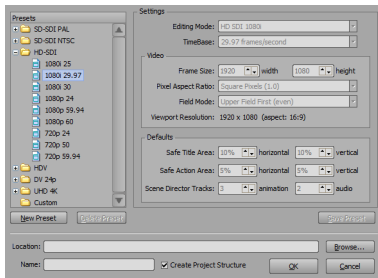
New Project

To create a new XPression project, complete the following steps:

1. On the XPression computer, use the **Start** menu to select **All Programs > XPression > Designer**.
2. In **XPression**, use the **File** menu to select **New**.
The **Confirm** dialog box opens.

3. Select one of the following options for the current project:
- **Yes** — save changes to the current project, then close the project.
 - **No** — close the project without saving changes.
 - **Cancel** — continue working on the project.

After selecting **Yes** or **No**, the **New Project** dialog box opens.



4. In the **Presets** panel, expand any video format node to view the available settings presets for the selected video format.

The available settings presets are displayed for the selected video format.

5. Select a setting preset to define video format setting for the new project.

The settings in the selected preset are displayed in the **Settings** section.

6. Click **Browse** to the right of the **Location** box to select a folder in which save the new project.

The **Browse for Folder** dialog box opens.

7. In the **Folder** tree view, locate and select a folder in which save the new project.

8. Click **OK**.

In the **New Project** dialog box, the full pathname of the selected folder is displayed in the **Location** box.

9. In the **Name** box, enter a name for the new project.

Project names may only contain letters, numbers, spaces, hyphens, or underscores.

10. Select the **Create Project Structure** check box to automatically create folders within the project folder to store project items (audio, video, dedicated fonts, images, models, etc.).

11. Click **OK**.

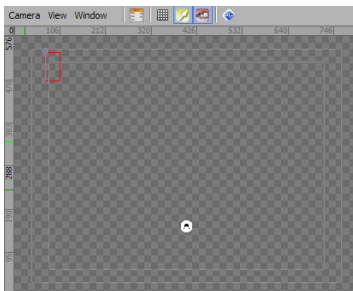
A new project is created and saved in the project folder. Project file are saved with the extension .xpf.

Simple Text

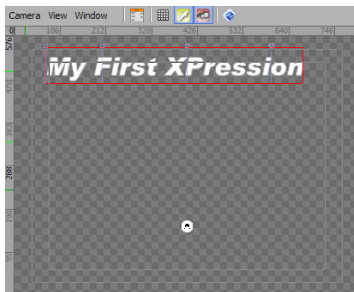
To create a text object, complete the following steps:

1. In the **Base Objects** section of the **Object Library** view, click **Text**.

A new text object is added to the top-left corner of the **Main Viewport**.

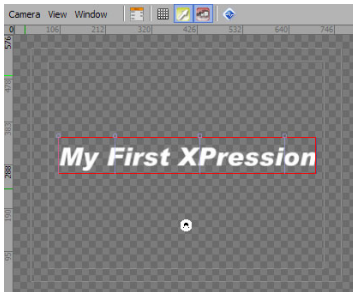


2. In the **Object Inspector**, click the **Scene Fonts** tab.
3. In the **Fonts** section, click **New**.
A new font is added the **Stock** list.
4. In the **Stock** list, click the new font.
5. In the **Font Face** tab, use the available settings to format the new font.
6. In the **Fonts** section, click **Apply**.
7. Type “My First XPression”.



8. In the **Object Inspector**, click the **Transform** tab.

9. Edit the values in the **Position** section to move the text box to a new location in the scene.



Alternatively hold down the **Ctrl** key, then click and drag the text object to a new location in the scene.

10. Select **File > Save**.

The new text is saved with the project.

XPression

Ross Video Limited

8 John Street –
P.O. Box 220
Iroquois, ON
Canada, K0E 1K0
Telephone: + 1 (613) 652-4886

Ross Video Limited – Ottawa Campus

62 Auriga Drive
Ottawa, ON
Canada, K2E 1B8
Telephone: + 1 (613) 228-0688

Ross Video Incorporated

P.O. Box 880
Ogdensburg, New York
U.S.A., 13669 0880

Ross Video EMEA

Pinewood Studios
Pinewood Road, Iwer Heath
Buckinghamshire, SL0 0NH
United Kingdom

Ross Video Australia Pty

Unit 5, 42-50 Stud Road
Bayswater, VIC, 3153
Australia
Telephone: +61 (0)3 9721 3200

Ross Video Australia – Sydney

B4
15-21 Doody Street
Alexandria NSW 2015
Australia
Telephone: +61 (02) 8020 5844

Ross Video (Singapore) Pte. Ltd.

3 Ang Mo Kio Street 62, Link@AMK,
#01-63, Singapore 569139

The logo for Ross Video, featuring the word "ROSS" in a bold, red, italicized sans-serif font. A red horizontal line is positioned beneath the letters.