

Installing and Configuring the XPression™ MOS Gateway

This document describes how to install and configure the XPression MOS Gateway.

System Requirements

It is recommended that you install the XPression MOS Gateway on a separate PC from XPression.

During installation, your computer may display security warnings depending on the security policies at your installation. Please allow the installation to proceed. If you have questions about safely installing software, consult your IT department.

Licensing

The XPression Gateway uses a USB dongle for licensing verification. It contains the following licenses:

XPression Gateway license

Floating licenses for each MOS plugin you have purchased

Floating plugin licenses are verified when the plugin connects to the XPression Gateway.

Installing the XPression Gateway

XPression should be installed prior to installing the XPression Gateway.

For information on installing XPression, refer to the *XPression Software Getting Started Guide*.

To install the XPression Gateway

1. Log on to the XPression computer as a user that can install software.
2. Shut down all Windows applications.
3. Copy the **xpGateway-x.xx_xxxx.exe** file to the computer.

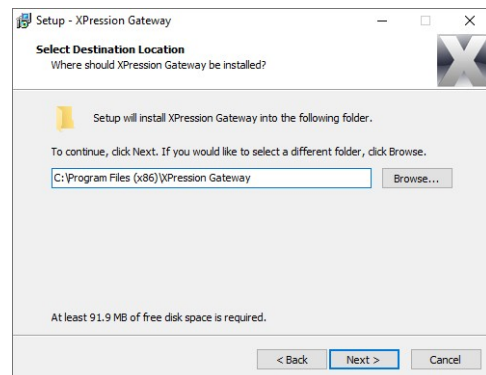
4. Double-click the **xpGateway-x.xx_xxxx.exe** file.

The **XPression Gateway Setup** wizard opens.



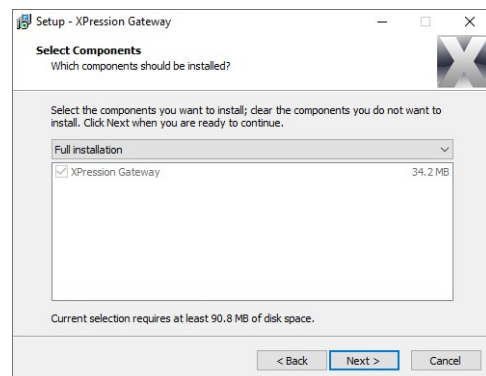
5. Select **Next**.

The **Select Destination Location** page opens.



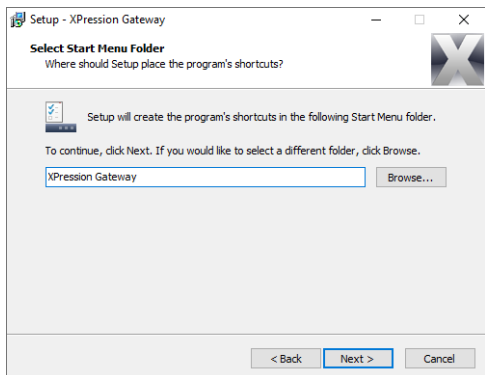
6. Accept the default folder or select **Browse** to select a different folder and select **Next**.

The **Select Components** page opens.



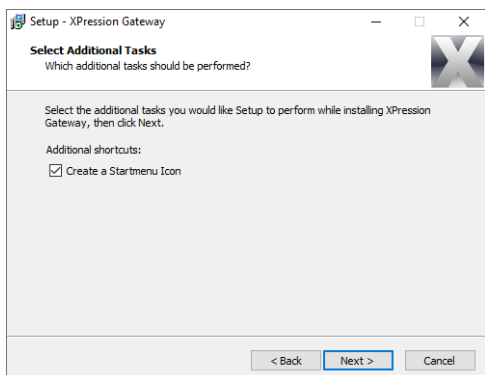
7. Accept the default components and then select **Next**.

The **Select Start Menu Folder** page opens.



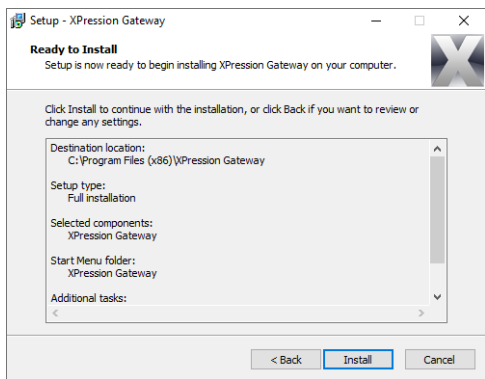
8. Accept the default **Start Menu Folder** for the program shortcut, or select **Browse** to select a custom **Start Menu Folder** and then select **Next**.

The **Select Additional Tasks** page opens.



9. Select the checkbox to create a **Start** menu icon or clear it if you do not want a **Start** menu icon (the program is still available from the **Start** menu in the folder you specified in step 8) and select **Next**.

The **Ready to install** page opens.



10. Select **Install** to begin installing the XPression Gateway.

A progress bar displays the installation status. When the installation is complete, the **Completing the XPression Gateway Setup** page opens.



11. Select **Finish**.

Configuring the XPression Gateway for MOS and NLE Workflows

This section provides general configuration information for the XPression Gateway. Some MOS applications may require custom settings. Refer to the Ross application note for your MOS application for details.

Configuration requires you to:

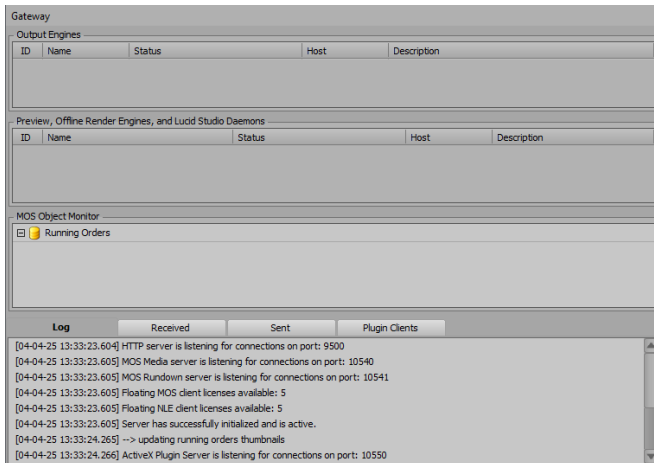
- Configure the XPression Gateway
- Configure Output Engines
- Configure Virtual Channels
- Configure Preview Engines (optional)

★ *The XPression Gateway USB dongle must be connected to an available USB port prior to running the XPression Gateway.*

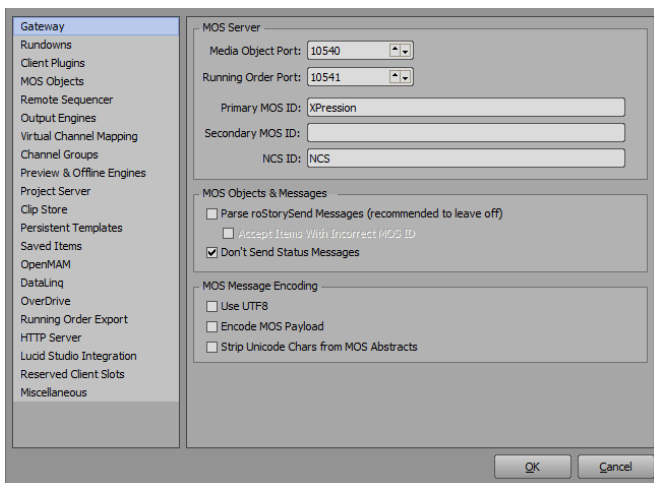
★ *If you have any Citrix programs installed, such as GoToMeeting, ensure that the **DNE Lightweight Filter** is disabled in the **Local Area Connection Properties** window of any machine that is connected to the XPression Gateway, including the XPression Gateway itself.*

To configure the XPression Gateway:

1. From the **Start** menu, select XPression Gateway.
The **XPression Gateway** dialog opens.



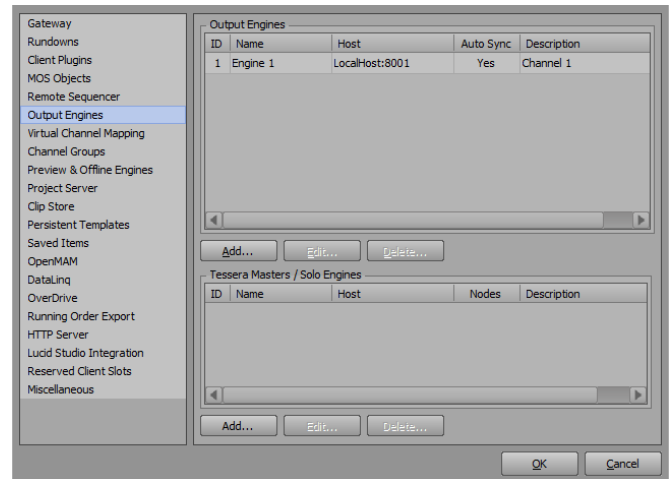
2. From the **Gateway** menu, select **Settings**.
The **Settings** dialog opens.



3. In the **MOS Server** section, set the **Primary MOS ID** (and **Secondary MOS ID**, if necessary) and the **NCS ID** fields as appropriate for your facility. Consult your facility engineer if you do not know this information.
4. In the **MOS Message Encoding** section, ensure that the **Use UTF8** checkbox is cleared.

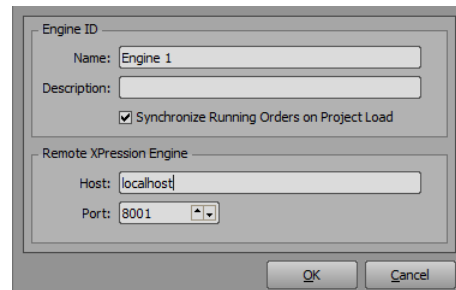
To configure Output Engines:

1. From the list on the left side of the dialog, select **Output Engines**.
The **Output Engine** panel opens.



2. Select **Add**.

The **Add Output Engine** dialog opens.

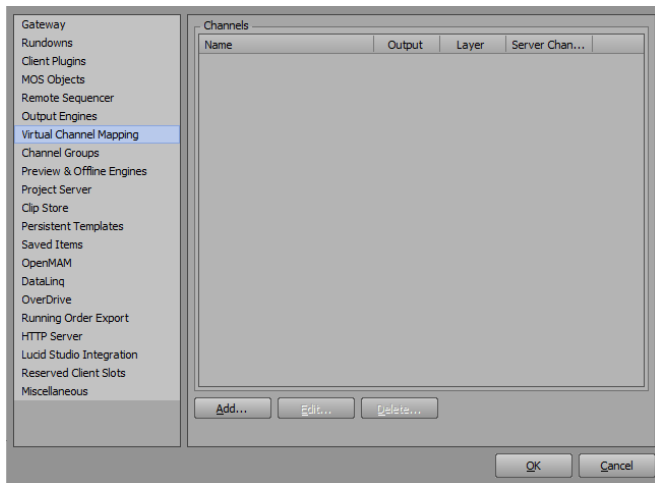


3. Type a name and description for the new output engine.
4. Set the **Host** to the network address of your XPression system PC (type `localhost` if the Gateway is installed on the XPression PC).
5. Set the **Port** to 8001.
6. Select **OK**.
7. Repeat steps 1 - 6 to create output engines for each XPression server.

To configure Virtual Channels:

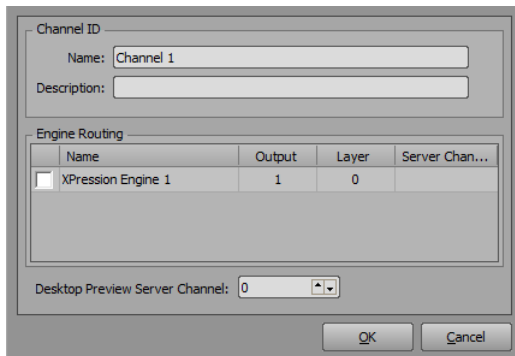
1. From the list on the left side of the dialog, select **Virtual Channel Mapping**.

The **Virtual Channel Mapping** panel opens.



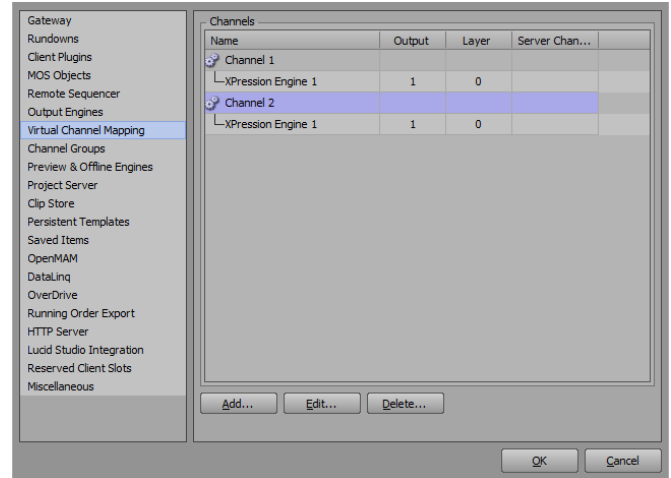
2. Select **Add**.

The **Add Virtual Channel** dialog opens.



3. Type a name and description for the new virtual channel.
4. Select the checkbox next to the output engine to link to this virtual channel.
5. Set the **Output** field to the XPression output to associate with the virtual channel.
6. Set the **Layer** field to the XPression layer to associate with the virtual channel.
7. Select **OK**.

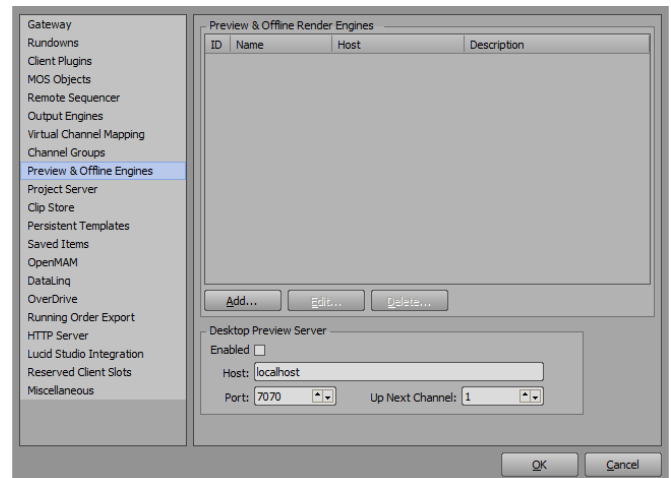
8. Repeat steps 2- 7 to create virtual channels for each XPression output engine you want to access from your newsroom application.



To configure Preview Engines — Optional:

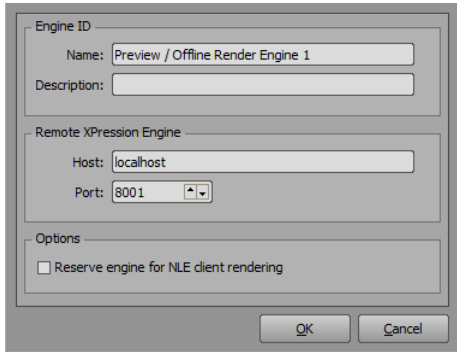
1. From the list on the left side of the dialog, select **Preview Engines**.

The **Preview Engine** panel opens.



2. Select **Add**.

The **Add Preview Engine** dialog opens.



The dialog box for adding a preview engine. It has three sections: 'Engine ID' with fields for 'Name' (set to 'Preview / Offline Render Engine 1') and 'Description'; 'Remote XPression Engine' with fields for 'Host' (set to 'localhost') and 'Port' (set to '8001'); and 'Options' with a checkbox 'Reserve engine for NLE client rendering' which is unchecked. 'OK' and 'Cancel' buttons are at the bottom.

3. Type a name and description for the new preview engine.
4. Set the **Host** to the network address of your XPression system (type localhost if the XPression Gateway is installed on the XPression PC).
5. Set the **Port** to 8001.
6. Select **OK**.

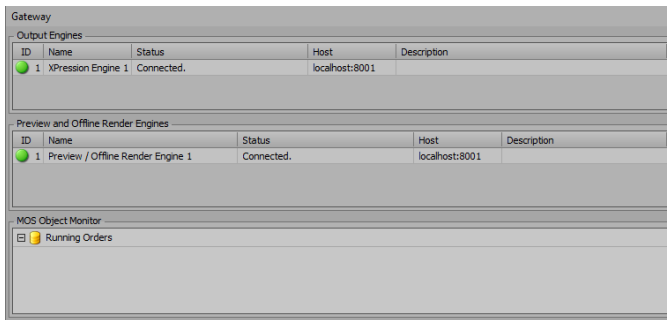
Verifying Settings

Use the following points to quickly verify if XPression, the XPression Gateway, and the newsroom system are configured and communicating properly:

Green icons should be displayed next to each output and preview engine in the XPression Gateway application.

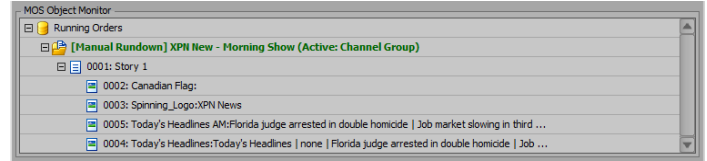
If green icons are not displayed:

- ensure that the XPression Gateway PC and the XPression PC are visible to each other on the network.
- ensure that the XPression application is running.



The XPression Gateway application window. It contains three panes: 'Output Engines' showing 'XPression Engine 1' as 'Connected' on 'localhost:8001'; 'Preview and Offline Render Engines' showing 'Preview / Offline Render Engine 1' as 'Connected' on 'localhost:8001'; and 'MOS Object Monitor' showing a tree view of 'Running Orders'.

When a rundown is made MOS Control Active, it should appear in the XPression Gateway.



The MOS Object Monitor window showing a tree view of 'Running Orders'. The root is '[Manual Rundown] XPN New - Morning Show (Active: Channel Group)'. It contains several items, including '0001: Story 1', '0002: Canadian Flag', '0003: Spinning_Logo: XPN News', '0005: Today's Headlines AM: Florida judge arrested in double homicide | Job market slowing in third ...', and '0004: Today's Headlines: Today's Headlines | none | Florida judge arrested in double homicide | Job ...'.

If the XPression Gateway is properly communicating with the XPression engines, the rundown should appear in the sequence view.

XPN News - Morning Show - Manual									
ID	online	Canadian FL	Canadian Flag 2	Manual	Cut / Cut	0 (mid...	Framebuffer 1	00:00:00...	00:00:00.00
0046	Spinning_Logo	Spinning_Logo 2	XPN News		Cut / Cut	0 (middle)	Framebuffer 1	00:00:00.00	00:00:06.20
0042	Today's Head...	Today's Headlines AM	Florida judge arrested in double homicide Job...		Cut / Cut	0 (middle)	Framebuffer 1	00:00:00.00	00:00:00.00
0041	Today's Head...	Today's Headlines	Today's Headlines * Florida judge arrested ...		Cut / Cut	0 (middle)	Framebuffer 1	00:00:00.00	00:00:00.00
0107	Scene ID	Scene ID	Countdown to Super Bowl 2025 DARS HR ...		Cut / Cut	0 (middle)	Framebuffer 1	00:00:00.00	00:00:06.20
0013	Full Screen S...	Full Screen Standings	League Leaders <15 Andrew Simpson forwa...		Cut / Cut	2	Framebuffer 1	00:00:00.00	00:00:02.03
0044	Economy Fe...	Economy Feature 1 2	* Rents continue to rise across ... the country		Cut / Cut	0 (middle)	Framebuffer 1	00:00:00.00	00:00:06.20