

Upgrading XPression from Windows® 7 to Windows 10®

★ Ross Video does not provide a Windows 10® license when upgrading from Windows® 7. It needs to be purchased by the user.

This document explains how to upgrade a Ross Video turnkey Windows 7 Pro XPression to the Windows 10 operating system. It contains the following information:

[Supported Hardware](#)

[Upgrade Instructions](#)

[Installing Windows 10](#)

[WIN10Disable-reg File](#)

[Windows Update Settings](#)

[Disabling Windows Fast Startup](#)

[Testing XPression After Upgrading](#)

Supported Hardware

M1 through M6 generations of XPression systems support the Windows 10 upgrade.

★ 16GB of RAM is recommended for Windows 10. The minimum amount is 8GB of RAM.

Upgrade Instructions

★ Perform a backup of all XPression media before performing the following Windows 10 install procedure.

★ Close and shutdown all running applications before installing Windows 10.

Installing Windows 10

This section describes how to install Windows 10, configure privacy settings, and remove apps and programs from the Start menu.

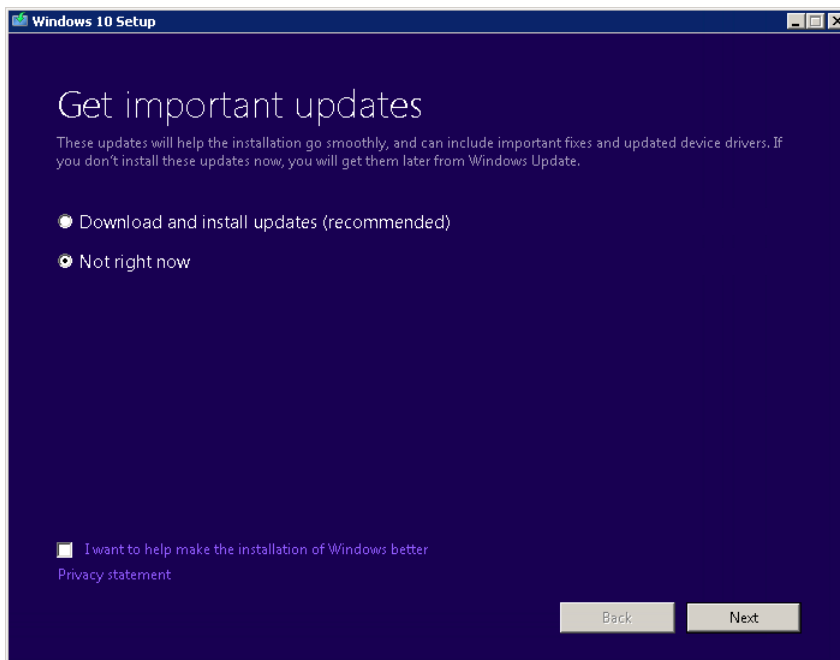
To install Windows 10:

1. Insert the Windows 10 disc or USB stick into the machine.
2. Open the Windows 10 Media.
3. Double-click **Setup.exe**.

The Windows 10 Setup opens.

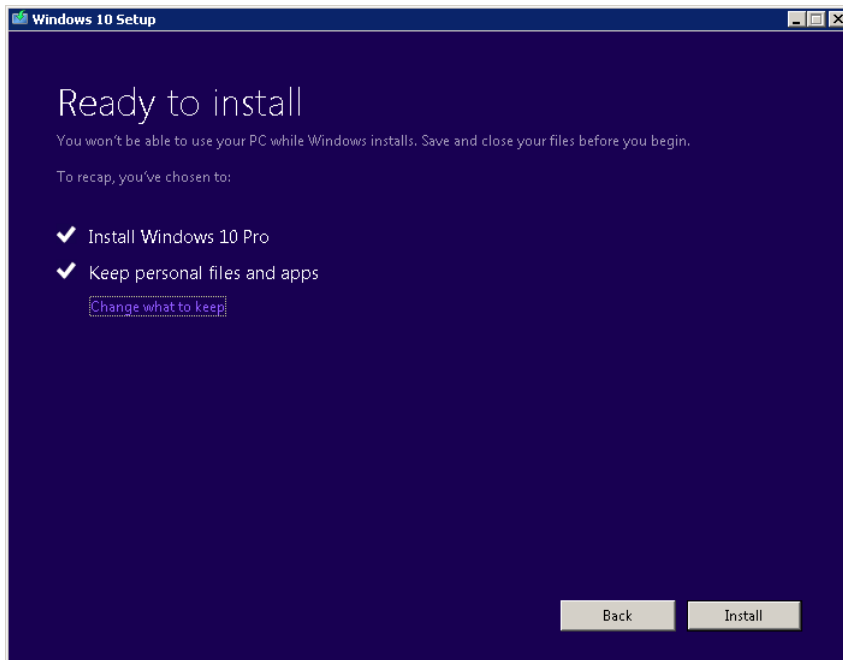
4. In the **Get important updates** page, select **Not right now** and select **Next**.

The **Applicable notices and license terms** page is displayed.



5. Select **Accept** to accept the applicable notices and license terms.

The **Ready to Install** page is displayed.



6. Select **Install**.

An installation notification is displayed and Windows 10 begins to install.



When the installation is complete, a **Welcome** window is displayed.



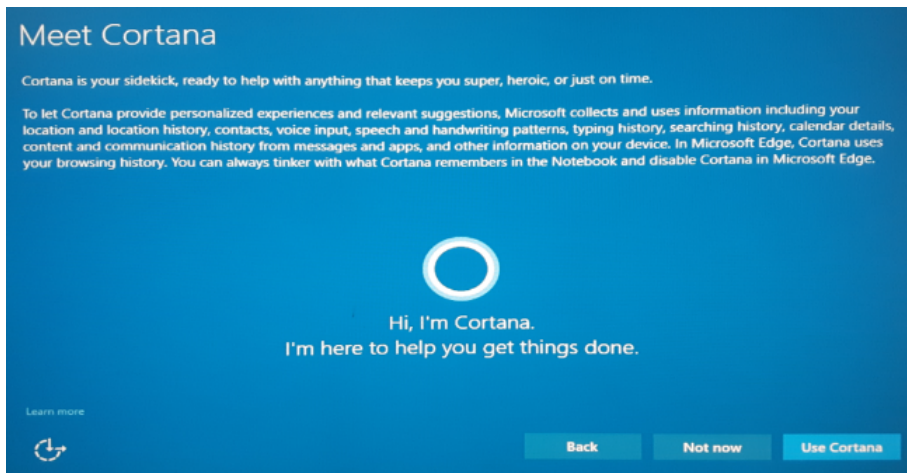
7. Select **Next**.

The **Choose privacy settings for your device** window is displayed.

To configure privacy settings:

1. Slide the **Location** setting to **Off**.
2. Slide the **Speech recognition** setting to **Off**.
3. Slide the **Diagnostics** setting to **Basic**.
4. Select **Accept**.

The **Meet Cortana** window is displayed.



5. Select **Not Now**.

The **New apps for the new Windows** window is displayed.



6. Select **Next**.

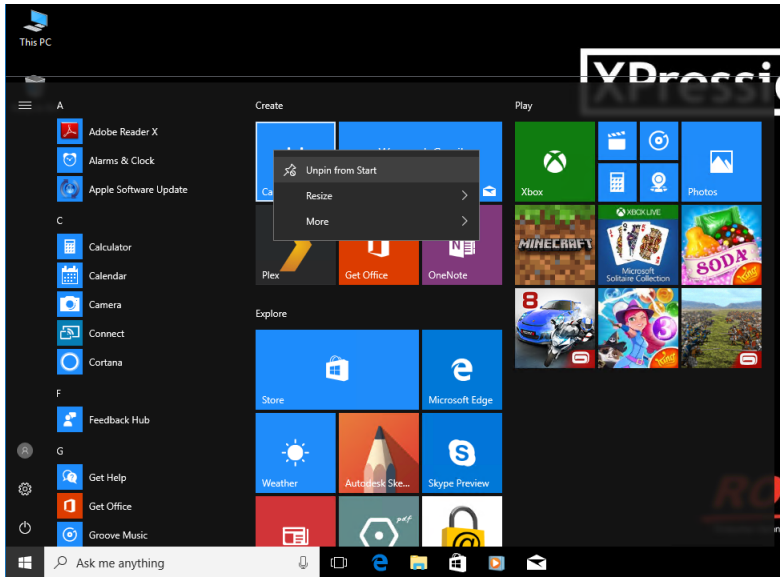
The Windows 10 login window is displayed.

7. Log in to the machine.

★ If there are any further Windows updates, they will install now.

To remove apps and programs from the Start menu:

1. In the **Start** menu, right-click on each individual app and program and select **Unpin from Start** until all apps and programs have been unpinned.



2. In the taskbar, right-click on **Mail**, **Windows Media Player**, and **Store** and select **Unpin from Taskbar**.



NVIDIA Update

If the machine requires an update to the latest XPression-approved NVIDIA driver, contact Ross Technical Support for the NVIDIA driver.

Once you have the NVIDIA driver, update the driver using the following instructions.

To update the NVIDIA driver:

1. Launch the driver installer.

After the system compatibility check, the NVIDIA software license agreement section is displayed.



2. Select **AGREE AND CONTINUE** to accept the agreement.

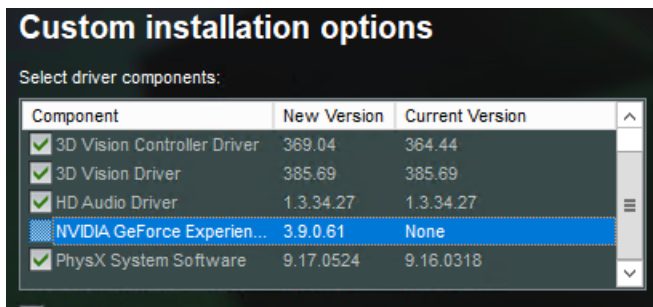
The **Installation options** section is displayed.



3. Select **Custom (Advanced)** and then select **NEXT**.

The Custom installation options are displayed.

4. De-select the **NVIDIA GeForce Experience** checkbox and then select **NEXT**.



The installation begins.

5. When the installation has completed, select **CLOSE** to exit the NVIDIA Installer.

WIN10Disable-reg File

Contact Ross Technical Support to get the WIN10Disable.reg file.

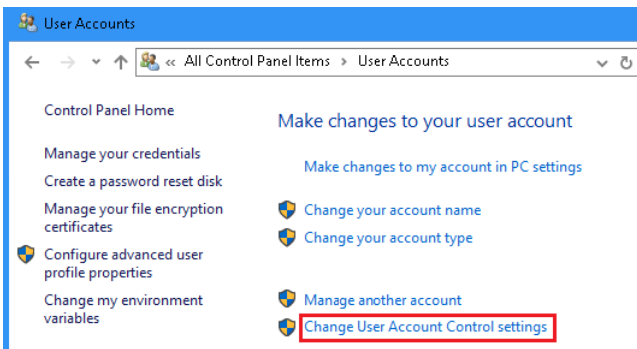
Once the WIN10Disable.reg file is obtained, configure the Windows settings as described in the following procedure:

To configure Windows settings:

1. Copy the **WIN10Disable.reg** file to the server.
2. Run the **WIN10Disable.reg** file.

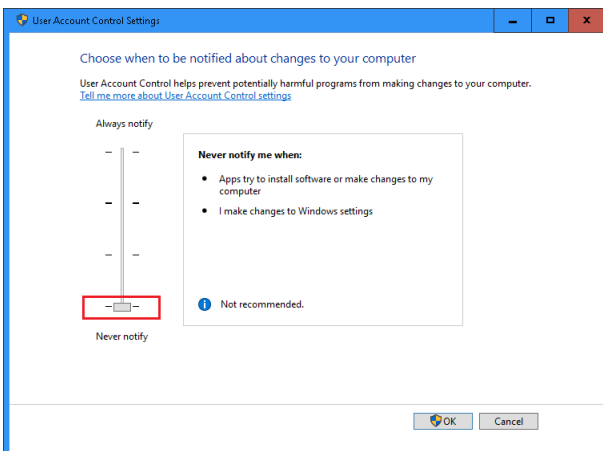
This will merge some registry settings that disable the Windows firewall, Windows Defender, OneDrive, and Cortana.

3. Restart the server.
4. Delete the WIN10Disable.reg installer.
5. Open **Control Panel > All Control Panel Items > User Accounts** to open the **User Accounts** panel.
6. Select **Change User Account Control** settings.



The **User Account Control Settings** window opens.

7. Set the notification level to **Never notify**.

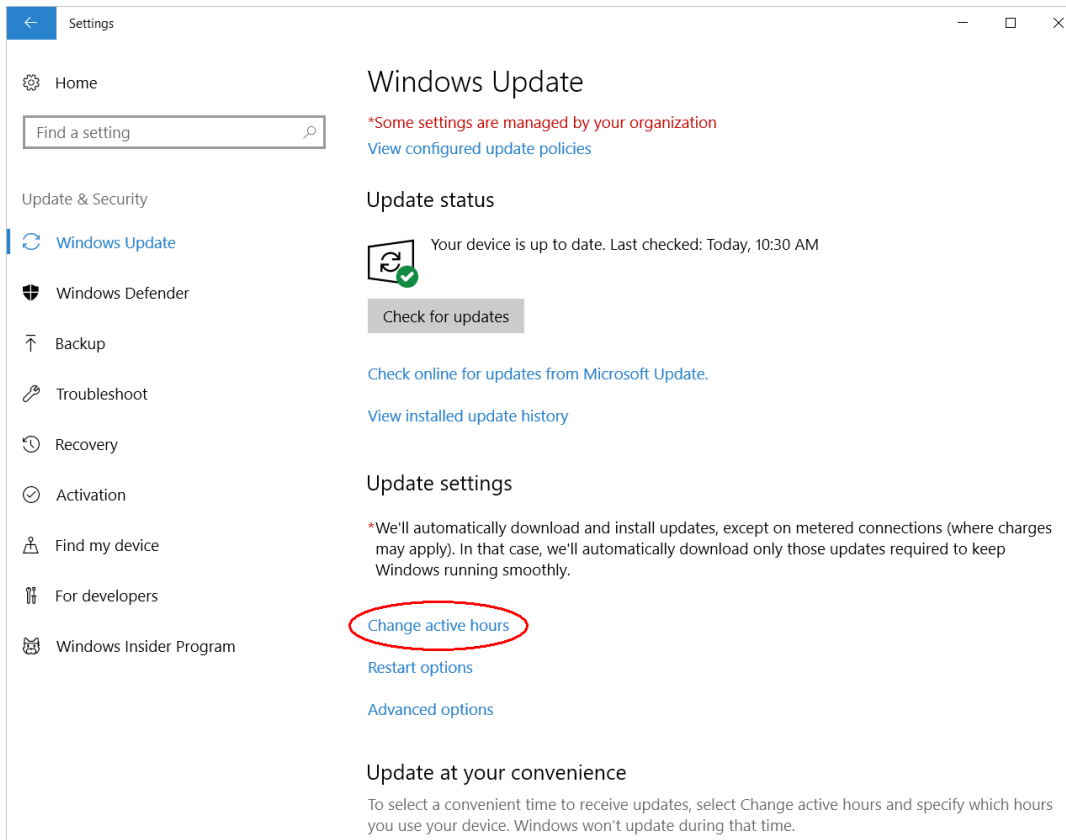


Windows Update Settings

It is recommended that the **Windows Update** active hours be adjusted so that the updates do not conflict with the operation of XPression.

To set the appropriate active hours of operation:

1. From the **Start** menu, select **Settings**.
2. Select **Change active hours**.



The **Active hours** window opens.

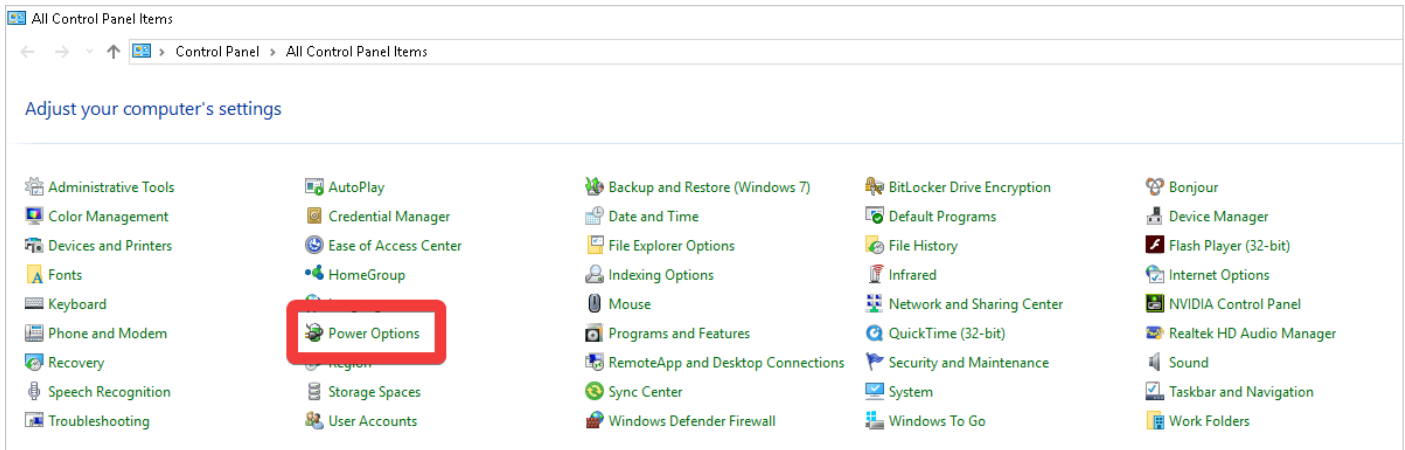
3. Use the **Start time** and **End time** menus to select a period of time that XPression is typically in use so that the upgrades do not occur during hours of operation.
4. Select **Save**.
5. Select **OK**.

Disabling Windows Fast Startup

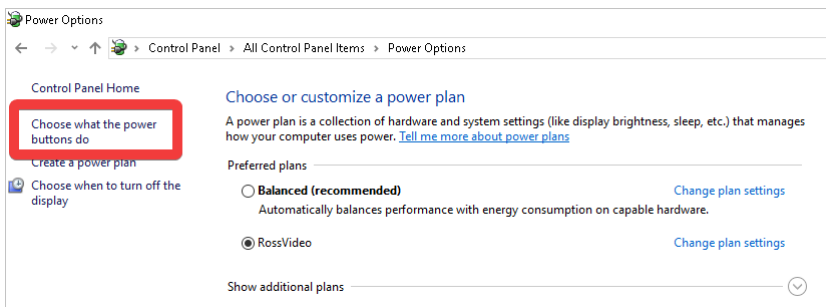
It is recommended that the Windows Fast Startup option be disabled.

To Disable Windows Fast Startup:

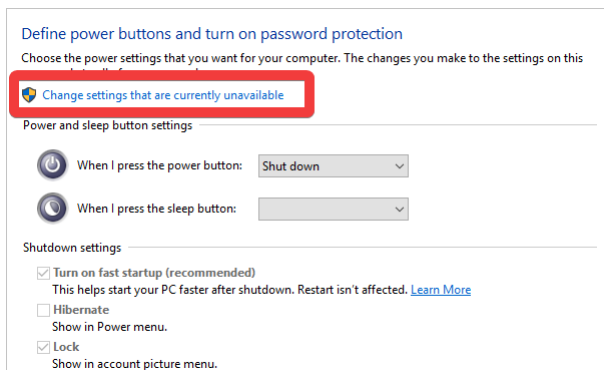
1. Open **Control Panel > All Control Panel Items > Power Options** to open the **Power Options** panel.



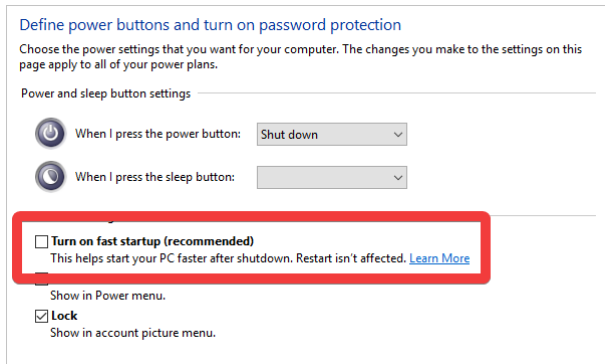
2. In the **Power Options** panel, select **Choose what the power buttons do**.



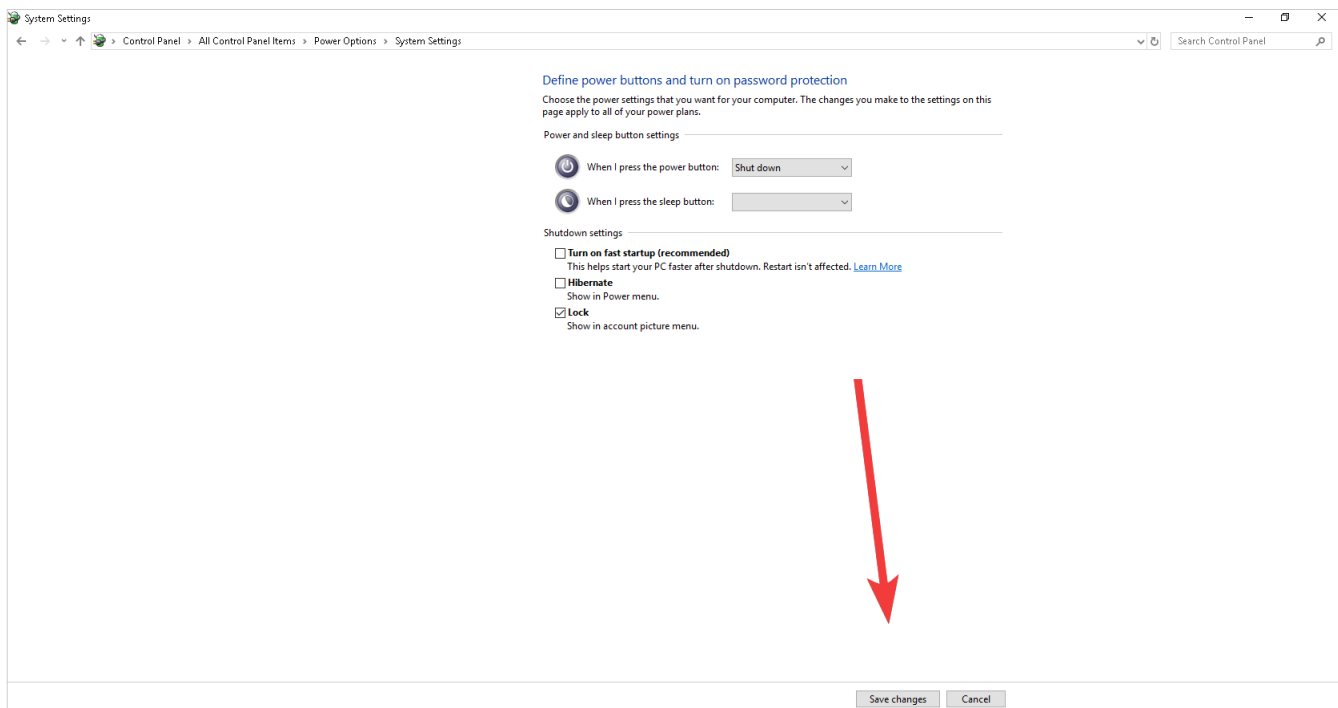
3. In the **Define power buttons and turn on password protection** panel, select **Change settings that are currently unavailable**.



4. In the **Shutdown settings** section, disable the **Turn on fast startup (recommended)** checkbox.



5. Select **Save changes**.



Testing XPression After Upgrading

After the Windows 10 upgrade, launch XPression to test the application performance and operability. Open a project and run XPression to ensure it runs properly on the new operating system.

Contact Us

Contact our friendly and professional support representatives for the following:

- Name and address of your local dealer
- Product information and pricing
- Technical support
- Upcoming trade show information

Technical Support	Telephone:	+1 613-686-1557 +1 833-859-0499 (Toll free within North America) +800 3540 3545 (Toll free International) 1300 007 677 (Australia/Sydney)* *If the local support specialist is not available, your call will be transferred automatically to our North America center.
	Email:	techsupport@rossvideo.com

General Information	Telephone:	+1 613-228-0688 +1 844-652-0645
	Fax:	+1 613-652-4425
	Email:	solutions@rossvideo.com
	Website:	http://www.rossvideo.com

Visit Us

Visit our website for:

- Company information and news
- Related products and full product lines
- Online catalog
- Testimonials