

Restoring XPression from a System Image Backup for Windows® 7

You can use a system image to restore the contents of your computer if your hard disc or entire computer stops working.



Warning — When you restore your computer from a system image, it is a complete restoration. You cannot choose individual items to restore and all of your programs, system settings, and files are replaced with those on the system image.

Before starting, ensure that the removable media to which your backup is stored is available, if applicable. Also, ensure that the disc to which you're restoring the backup is the same size or larger than the disc that you backed up.

If you plan on restoring the factory Ross Video image, a USB key will need to be created prior to starting the restore. XPression servers use hardware RAID. The Windows® 7 DVD does not load the correct drivers to see the factory partition.

For More Information on...

- creating a USB thumb drive with LSI Mega RAID SAS 9266-4i drivers, refer to [Creating a USB Thumb Drive](#).

Downloading the LSI MegaRAID SAS 9266-4i Drivers

The latest MegaRAID 9266-4i driver files can be downloaded from the LSI website by selecting the latest Mega RAID Driver – October 01, 2014 or newer.

Select the download zip icon to start the download process. Accept the **LSI Download Agreement SLA** and save the file to a common area on your computer. Once you have saved the file, use any ZIP program to open and view the contents of the ZIP file.

Creating a USB Thumb Drive

★ This section can be skipped for XPression M2 servers with no RAID controller card.

Open the folder and copy the Windows 7 64 (win7-x64) bit drivers to your USB key. Depending on the size of your USB key, the user guide does not need to be copied for this process.

During the Windows 7 system image restore you will need to navigate to this USB key. Please follow the navigation steps in the restore section.

★ The USB thumb drive will need to be installed in the computer USB slot as the system is starting. Windows only loads the drives of attached devices. Adding the USB key after booting from the WIN7 CD-ROM will not allow you access to the USB key. You will need to reboot the server with the key installed and follow the steps again.

Restoring Using the Recovery Control Panel from Within Windows

If your computer is still working and you can access the **Control Panel**, or if you want to restore your system image backup onto a different computer, use the following steps.

To restore using the Recovery Control Panel from within Windows:

1. Open **Recovery** by selecting the **Start** button (📁) and then selecting **Control Panel**.
2. In the **Search** box, type `recovery`.
3. Once the search is complete, select **Recovery**.
4. Select **Advanced recovery methods**.
5. Select **Use a system image you created earlier to recover your computer** and then follow the on-screen steps.

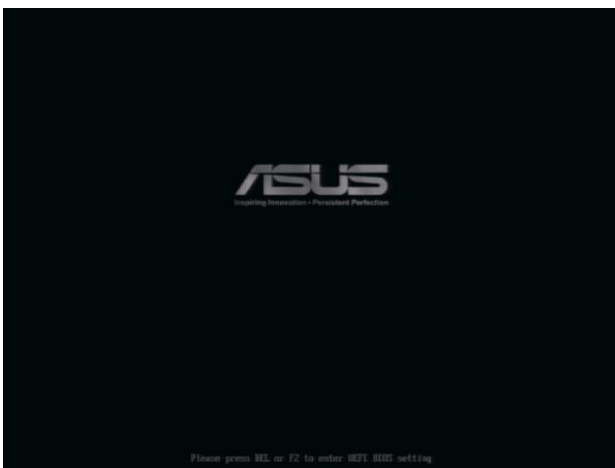
Restoring Using a Windows 7 Installation Disc or a System Repair Disc

If you cannot access the **Control Panel**, you can restore your computer using a Windows installation disc or a system repair disc.

To restore using a system repair disc or Windows 7 installation disc:

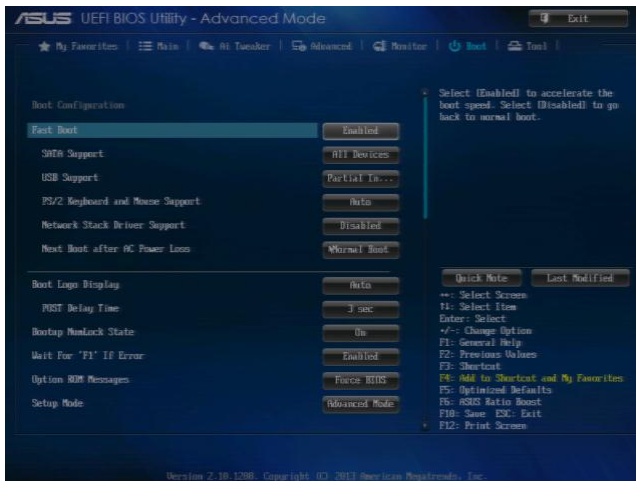
1. Insert the installation disc (or system repair disc) and the USB key.
2. Restart your computer using the power button.

The ASUS splash screen opens.



3. Press the **Delete** or **F2** key to enter into the system BIOS.

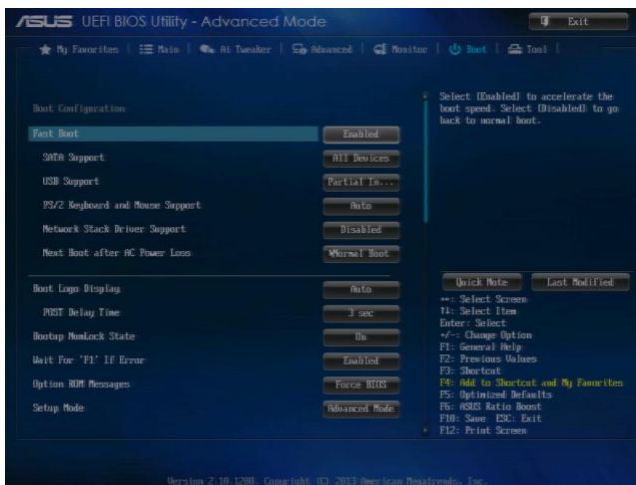
The ASUS **UEFI BIOS Utility** screen opens.



★ Do not make ANY changes in the BIOS.

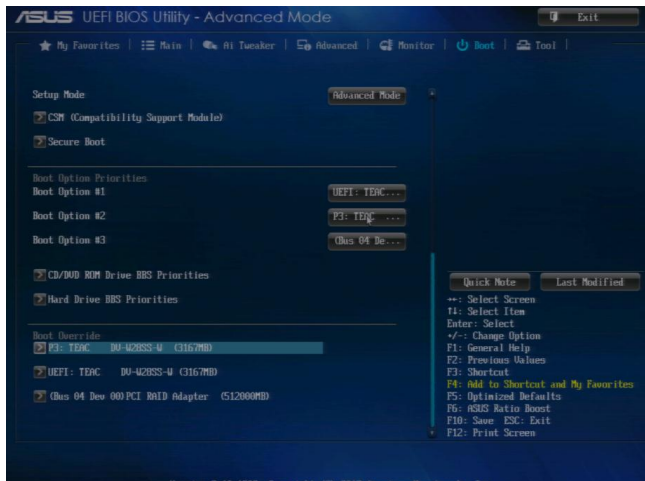
4. Using the mouse or the keyboard arrows, select the **Boot** tab.
5. Press **Enter**.

The boot screen opens.



6. Use the down arrow to navigate to the **Boot Override** menu.

The **Boot Override** menu opens.



7. Select **P3: TEAC DV-W28SS-W**.
8. Press **Enter** to boot from the Windows 7 DVD.

Wait for the black screen that prompts you to boot from CD or DVD. By default, the XPression servers have the boot from DVD function disabled.

If this step is missed, you will have to start this process over again.



To reinstall Windows:

1. When prompted with the black boot screen, press any key to begin.

Windows starts.



If prompted, press **Enter** to continue until you reach the Windows install window.



2. Choose your language settings.
3. Select **Next**.

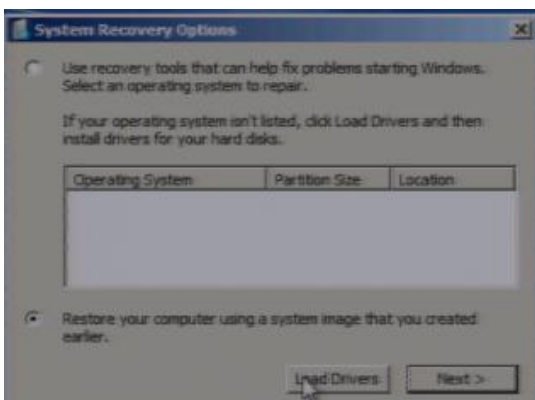
The next Windows install window opens.



4. Select **Repair your computer**.

To restore using a Windows 7 installation disc:

If you are using the Windows 7 installation disc, the **System Recovery Options** dialog opens after clicking **Repair your computer**.

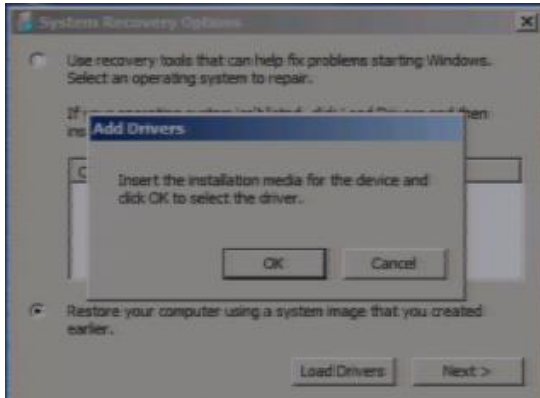


★ This method completely wipes the computer and should only be used when all other methods of recovery have been tried.

1. In the **System Recovery Options** dialog, select a recovery option.

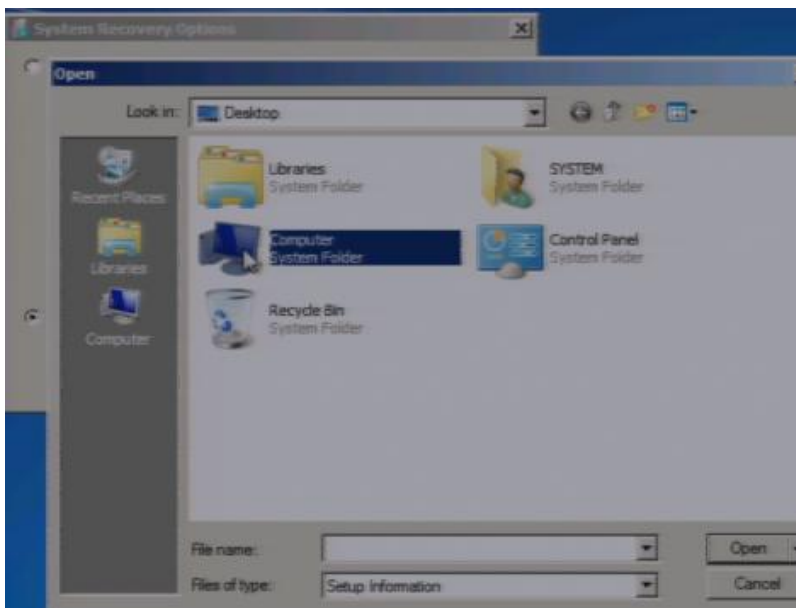
2. Select **Load Drivers**.

The **Add Drivers** prompt opens.

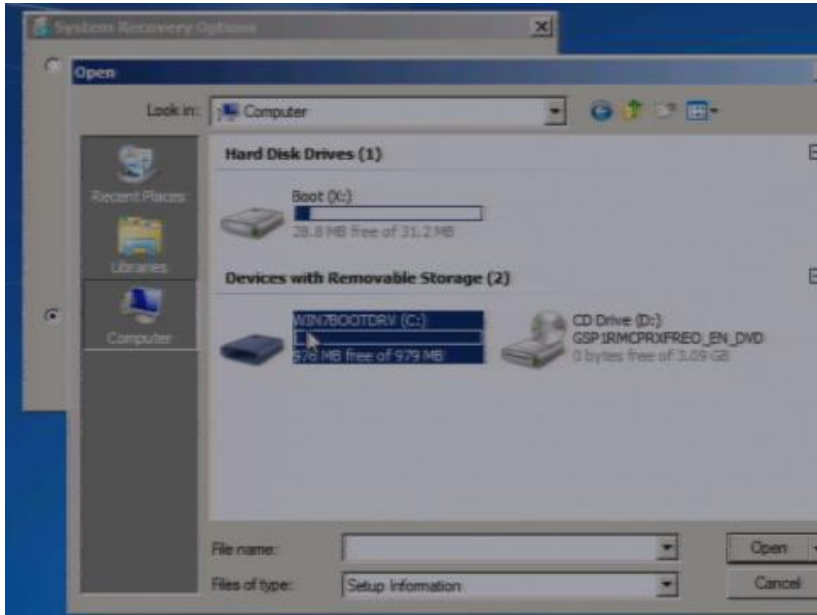


3. Select **OK**.

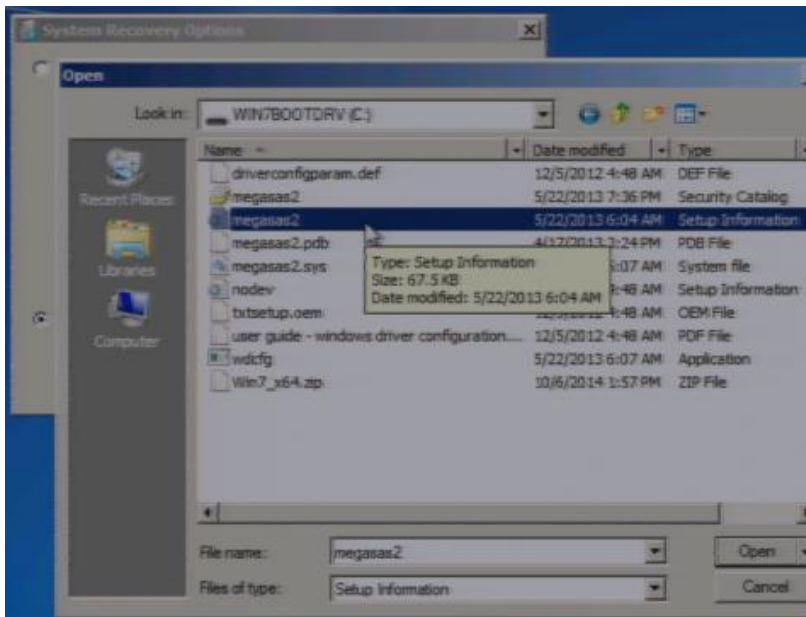
The **Open file** browser opens.



4. Double-click **Computer** and navigate to your **USB Thumb Drive**.

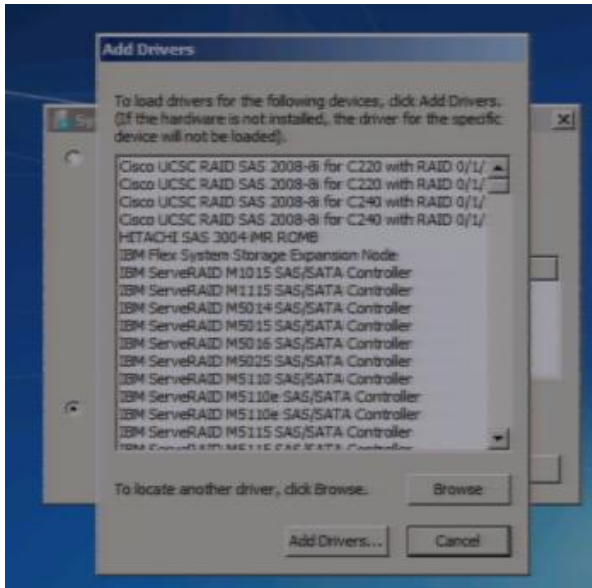


5. Double-click your **USB Thumb Drive**.
6. Select the **megasas2** driver.

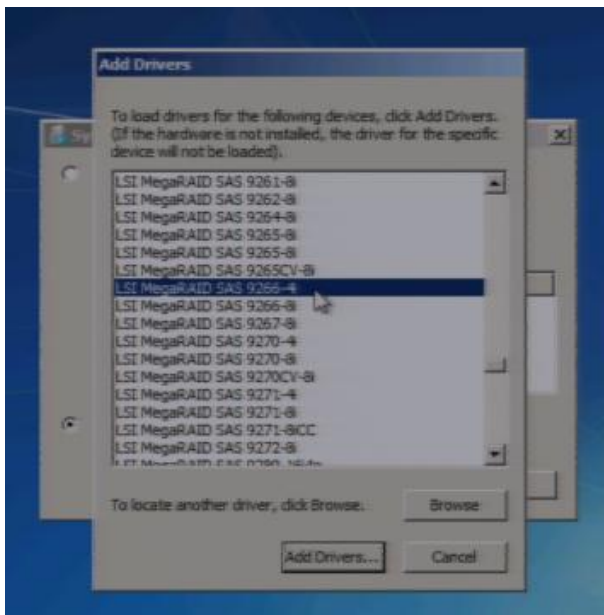


7. Select **Open**.

The **Add Drivers** browser opens.

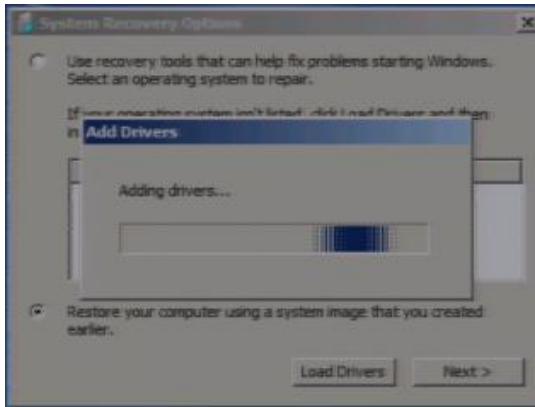


8. Scroll down and select **LSI MegaRAID SAS 9266-4i**.

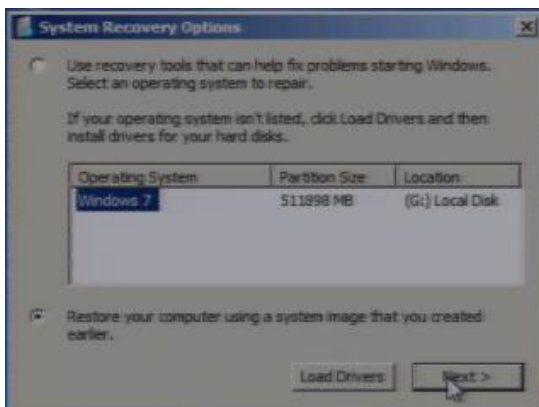


9. Select **Add Drivers**.

The drivers begin loading. This can take a couple of seconds.



Once the drivers are loaded, the **System Recovery Options** dialog opens.

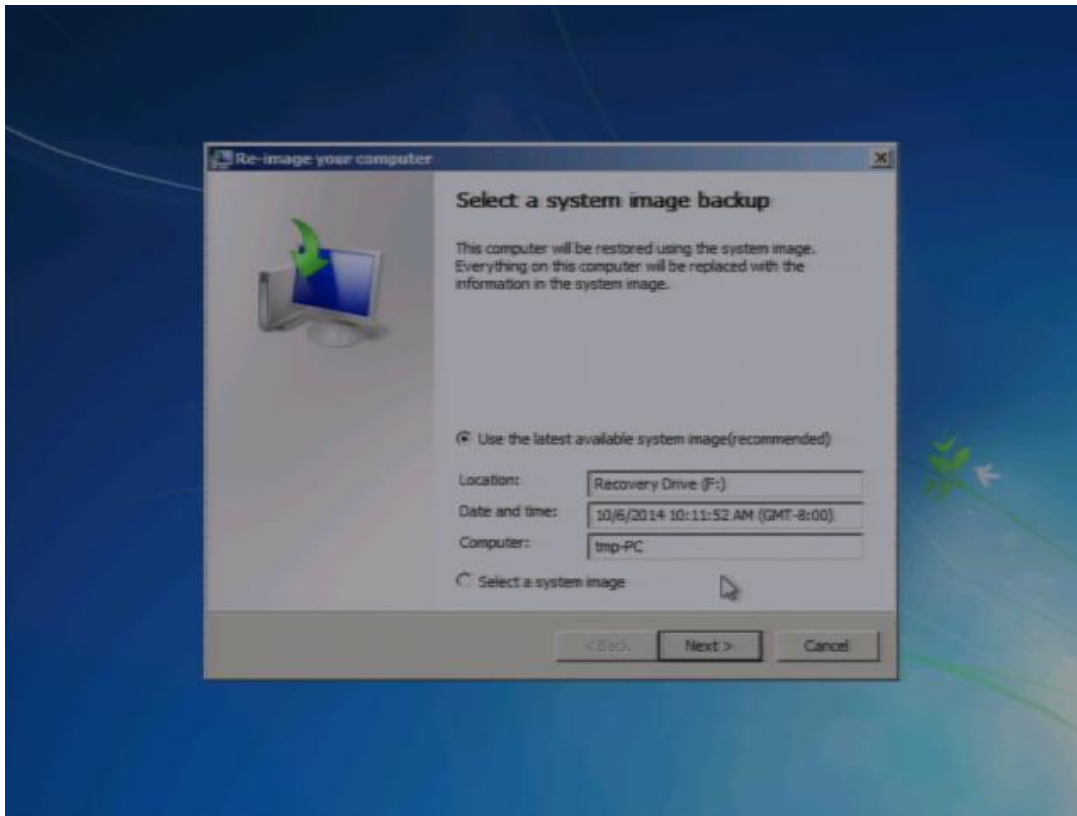


To re-image your computer:

1. In the **System Recovery Options** dialog, select **Next**.

The **Re-image your computer** window opens.

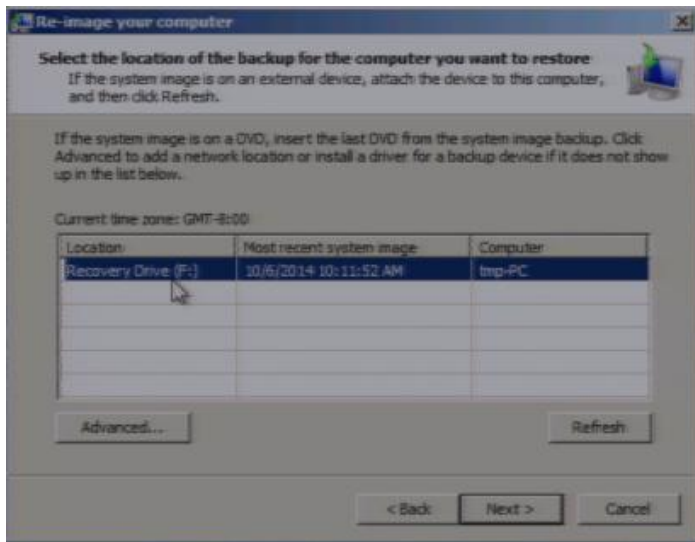
★ Providing the system recovery drive has not been deleted or overwritten, you can restore the factory image. If there is no image here, you should contact technical support for assistance.



2. In the **Select a system image backup** section, select **Next**.

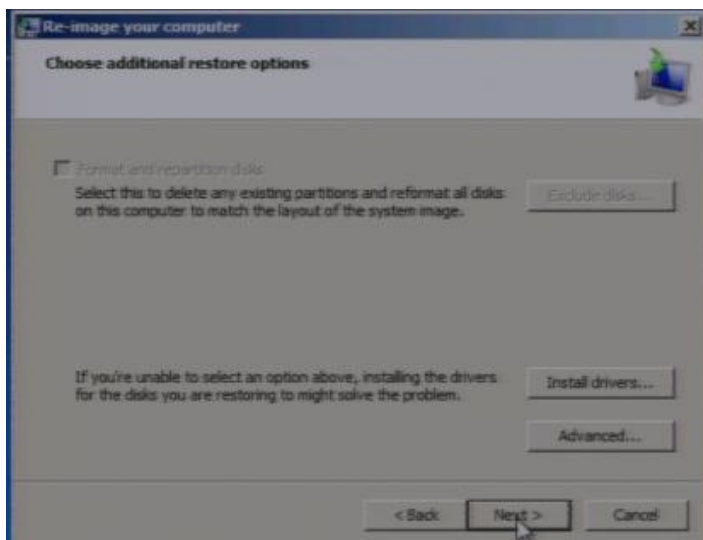
The **Select the location of the backup for the computer you want to restore** section opens. You will see a list of all your available system image files that can be restored, listed by date.

★ Ross Video only ships one image file. If you have made any image files with the built-in Microsoft tools, make sure to give them a unique file name.



3. Select **Next**.

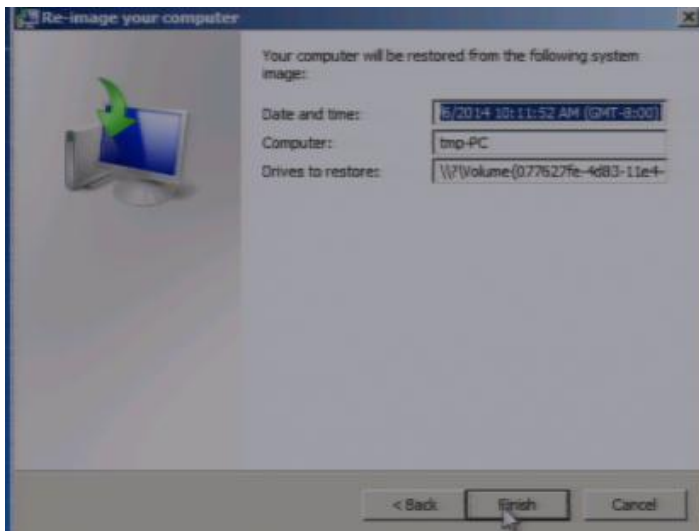
The **Choose additional restore options** section opens.



4. Select **Next**.

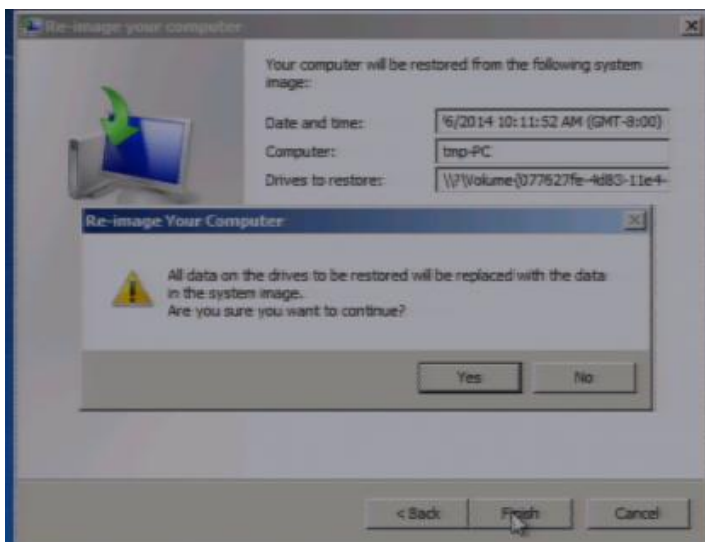
The final section of the **Re-image your computer** window opens.

★ The file names in the example screen captures will be different than yours. The image made in manufacturing will be the system name of the computer.



5. Select **Finish**.

The **Re-image Your Computer** prompt opens.



★ Before proceeding to the next step, be aware that the system will completely wipe all of your drives. If you have not backed up your projects, they will be erased.

6. Select **Yes**.

The computer will start the re-imaging process. Once done the system will reboot to the factory settings.

