

## NVIDIA® Card Installation & BIOS Updates

This document explains the BIOS updates and the NVIDIA card installation and configuration for XPression servers using the Dell™ R330.

The following topics are covered:

[Card Information](#)

[Updating the Dell R330 Server BIOS \(version 2.3.2\)](#)

[NVIDIA Card Installation](#)

[Configuring the NVIDIA Card In the Dell R330 Server](#)

### Card Information

- **MKTG CODE:** XPN-SVR-GPU-ADD — NVIDIA NVS 310 1GB x16 for Dual DVI Low Profile Video Card
- **Ross Video Part Number:** 55-00129
- **PNY Technologies:** VCNVS310DVI-1GB-PB

### Updating the Dell R330 Server BIOS (version 2.3.2)

Prior to installing the NVIDIA card, the Dell R330 server BIOS must be on version 2.3.2 or higher. The latest version can be found here: <https://www.dell.com/support/home/ca/en/cabsdt1/drivers/driversdetails?driverId=832M2>.

1. Once the BIOS file (version 2.3.2) has been obtained, copy the BIOS file to a FAT formatted USB stick.
2. Insert the FAT formatted USB stick into the server.
3. Turn the server power on (⏻).
4. Press **F11** to enter the **Boot Manager**.
5. In the **Boot Manager**, select **System Utilities**.
6. In the **System Utilities** menu, select **BIOS Update File Explorer**.
7. In the **BIOS Update File Explorer**, select the USB stick with the BIOS file.
8. Select the BIOS file.
9. In the **BIOS Update Utility** section, select **Continue BIOS Update** to begin the update.

When the update has completed, the system will reboot.

## NVIDIA Card Installation

1. With the system shut down, unlock the server cover using a Phillips or flathead screwdriver.



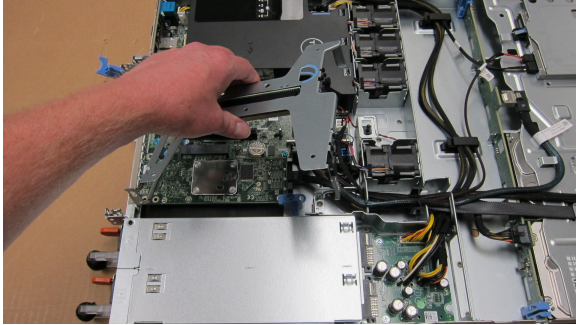
2. Release the cover lock.



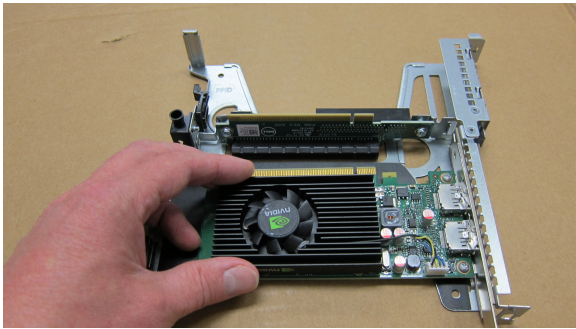
3. Remove the cover.
4. Unlock the riser bracket release at the rear of the server.



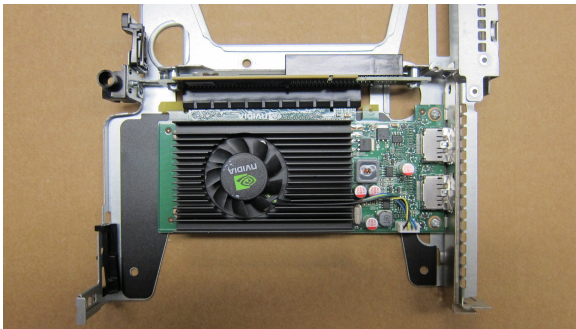
5. Carefully remove the riser bracket from the server by disconnecting its connectors from the connectors on the server.



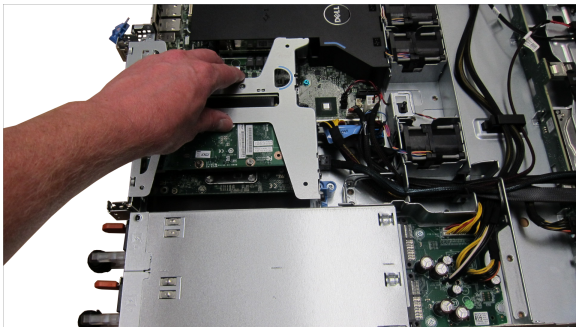
6. Place the card on the riser bracket, lining up the card connectors with the riser bracket connectors.



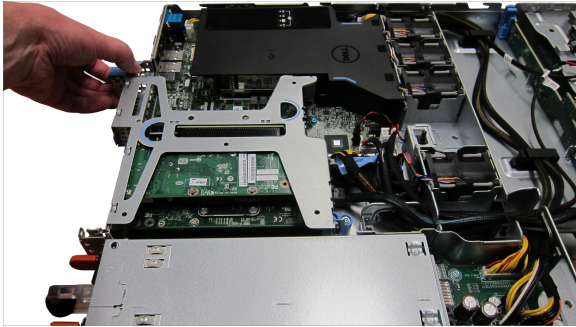
7. Connect the card to the riser bracket.



8. Insert and secure the riser bracket to the server.



9. Lock the riser bracket release.



10. Place the cover on the server.
11. Close the cover lock.



12. Lock the cover lock using a Phillips or flathead screwdriver.





## Configuring the NVIDIA Card In the Dell R330 Server

Use the following procedure to set up the NVIDIA card in the Dell R330 server:

1. Once the BIOS driver is up to date and the NVIDIA card is installed in the Dell R330 server, turn the server power on (🔌).
2. When the BIOS is booting, press **F2** to enter **System Setup**.
3. In **System Setup**, select **Integrated Devices**.
4. In the **Integrated Devices**, disable the **Embedded Video Controller** by selecting the **Disabled** checkbox.
5. Select **Back**.
6. Select **Finish**.