

XPression Clip Store Optimized Playback Settings

Introduction

This application note applies to XPression Clips or turnkey machines with the XPression Clips Option.

This application note describes a setting change that can provide optimized clip playback, especially when playback is occurring at the same time an INcoder that is running on a different machine might be sending clips to the Clip Store.

- ★ If using the XPression INcoder, it is NOT recommended to run the INcoder on the same machine as the Clip Store/Clips/Studio with Clips Option if encoding with the INcoder will be occurring simultaneously with clip playback.

Clip Store Version

The Clip Store should be running version 6.0 build 3325 or higher.

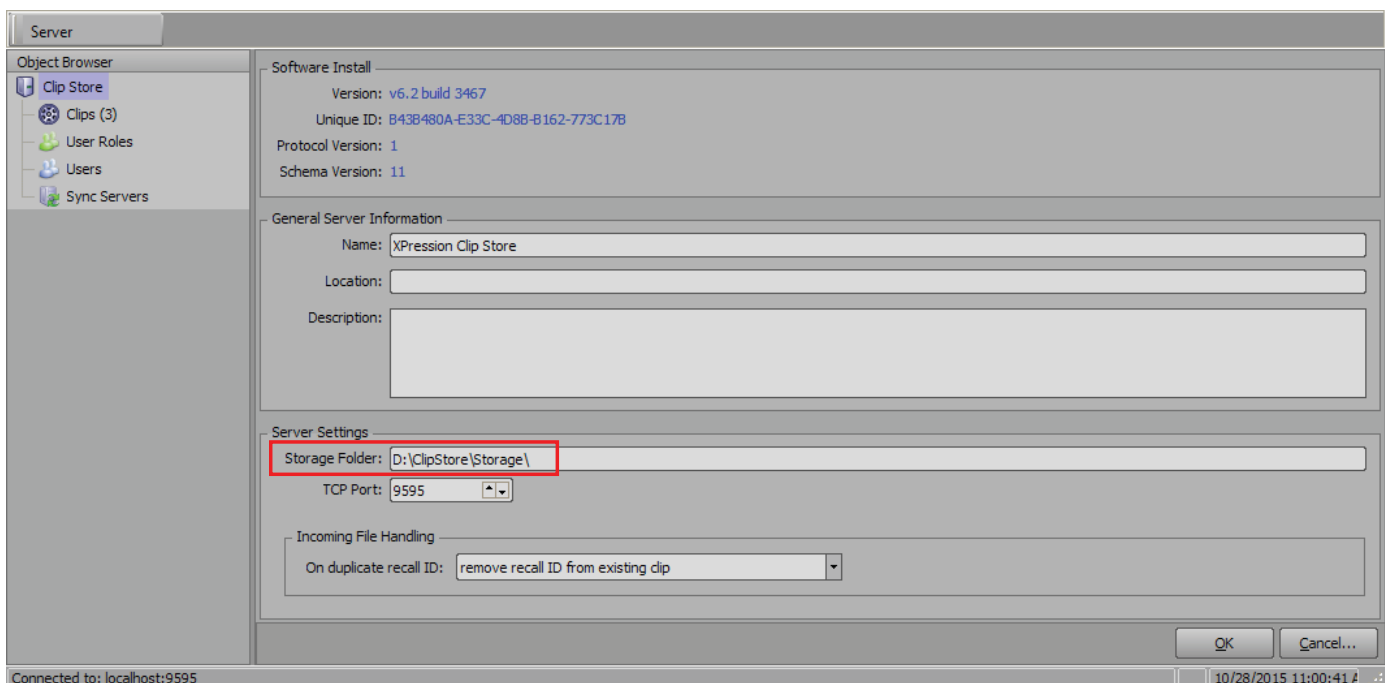
Clip Store Configuration

- If using Clip Store v6.1 build 3428 or higher, by default the Clip Store will create a storage folder on the D:\ media drive where the clips and thumbnails will be stored. The default path is D:\ClipStore\Storage\.

If the machine does not use a D:\ media drive, the default path will be C:\Program Files (x86)\XPression Clip Store\Storage\.

- If using a Clip Store version *prior* to v6.1 build 3428, by default the Clip Store will create a storage folder on the C:\ drive where the clips and thumbnails will be stored. The default path is C:\Program Files (x86)\XPression Clip Store\Storage\.

It is recommended that the Clip Store be configured to store clips on the D:\ media drive, if available. Ideally, this would be done during initial configuration before any clips have been ingested into the system. The storage folder can be configured in the Clip Store manager.



If the storage folder is being changed after clips have already been ingested into the system, you will need to manually copy the contents of the D:\ClipStore\Storage\ or C:\Program Files (x86)\XPression Clip Store\Storage\ to the new folder. A warning will be presented to remind you to do so:



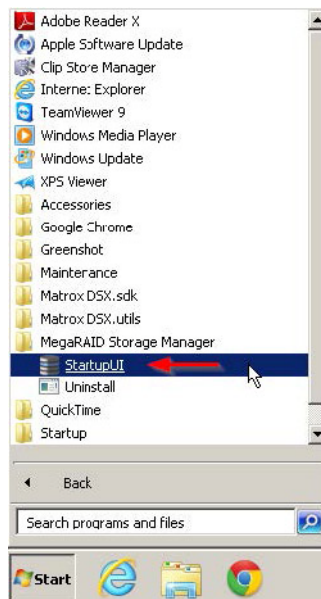
The new path should contain three subfolders: **Clips**, **Thumbnails**, and **Flipbooks**.

The Clip Store must be restarted after changing the storage folder location.

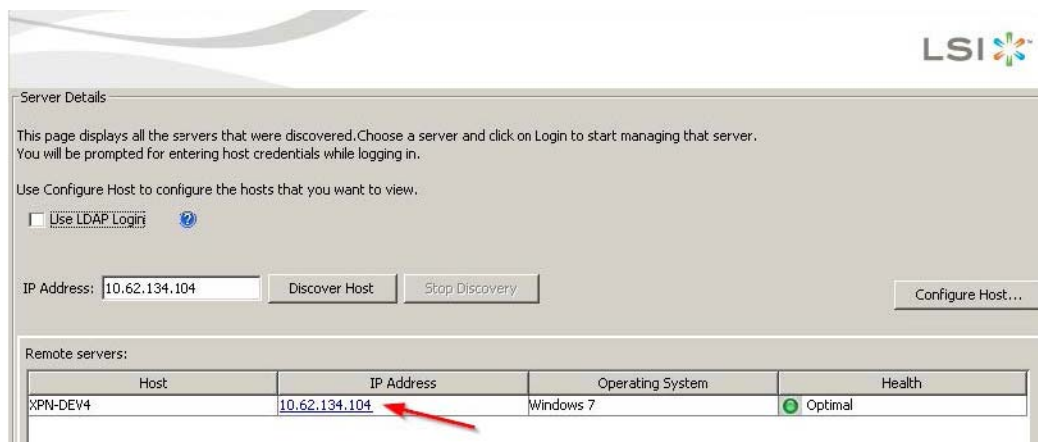
RAID Configuration

It is recommended to change the caching settings on the RAID controller to provide more consistent read/write performance which can avoid stuttering when clip playback and ingest is occurring simultaneously.

1. Open the MegaRAID **StartupUI** from the Windows **Start** menu.



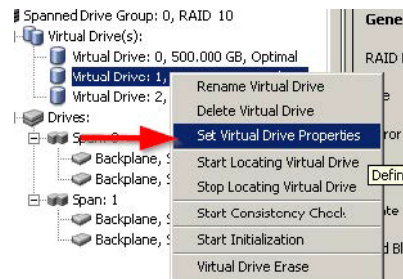
2. Select the IP address of the current machine and enter your login credentials. The default user is Administrator and the default password is program.



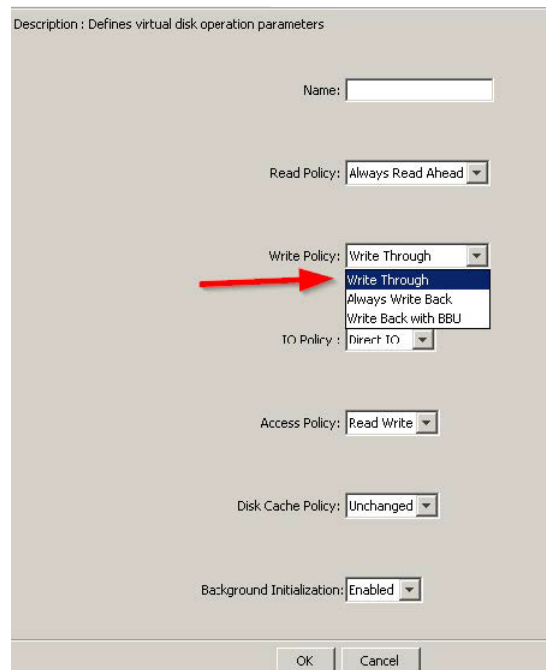
- Click the **Logical** tab [1] and right-click on **Virtual Drive: 1** [2]. Virtual Drive 1 represents the D:\ media drive.



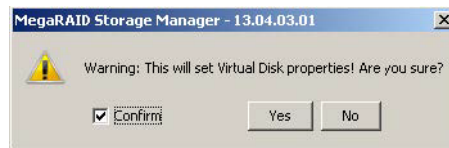
- Select **Set Virtual Drive Properties** from the menu.



- Use the **Write Policy** list to select **Write Through**.



6. Select the **Confirm** check box and click **Yes** to accept the changes.



7. Verify that the new policy for **Virtual Drive 1** is **Write Through**:

Write Policy:	
Current Write Policy	Write Through
Default Write Policy	Write Through