

## Installing the XPression™ Avid NewsCutter/Media Composer Plugin and ENPS Gateway

This Appnote describes how to install the XPression plugin for Avid NewsCutter/Media Composer and the XPression ENPS Gateway. Both are required to allow you to use XPression scenes with NewsCutter.

### System Requirements

The NewsCutter/Media Composer plugin must be installed on a PC with Avid NewsCutter or Media Composer installed. Ensure that this PC meets the Avid system requirements.

The ENPS Gateway must be installed on a PC with XPression or the XPression Offline Engine installed. Ensure that this PC meets the XPression system requirements.

During installation, your computer may display security warnings depending on the security policies at your installation. Please allow the installation to proceed. If you have questions about safely installing software, consult your IT department.

### Installing the NewsCutter Plugin

XPression or the XPression Offline Engine and Avid NewsCutter/Media Composer should be installed prior to installing the plugin.

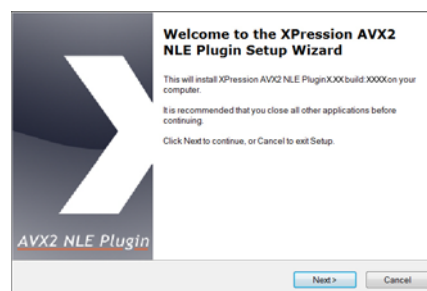
#### For More Information on...

- installing XPression, refer to the *XPression Software Getting Started Guide*.
- installing Avid NewsCutter/Media Composer, refer to the Avid documentation.

#### To install the NewsCutter/Media Composer plugin:

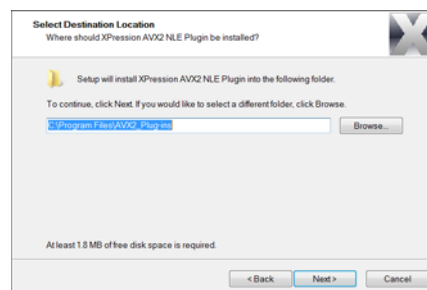
- Log on to the NewsCutter computer as a user that can install software.
- Shut down all Windows applications.
- Copy the **xpAVXPlugin-x.xx\_xxxx.exe** file to the computer.
- Double-click the **xpAVXPlugin-x.xx\_xxxx.exe** icon.

The **Setup - XPression AVX2 NLE Plugin** wizard opens.



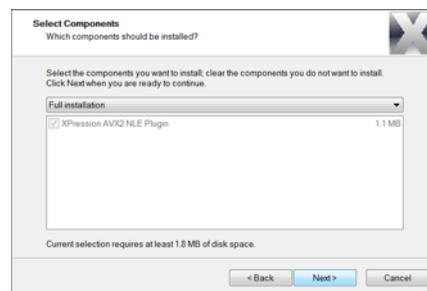
- Click **Next**.

The **Select Destination Location** screen opens.



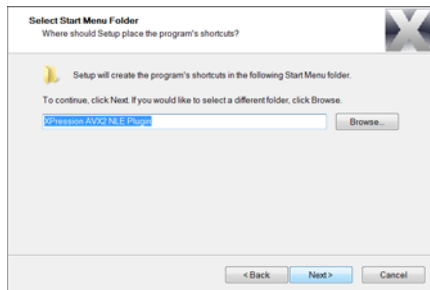
- Accept the current destination folder or click **Browse** to select a custom folder.
- Click **Next**.

The **Select Component** screen opens.



- Accept the default component selection.
- Click **Next**.

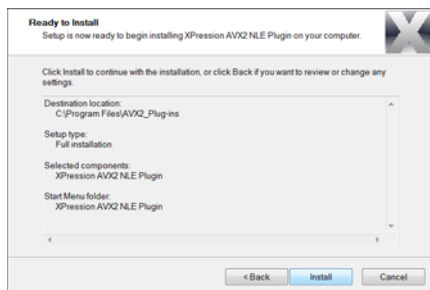
The **Select Start Menu Folder** screen opens.



10. Accept the default folder for the plugin shortcut, or click **Browse** to select a custom Sfolder.

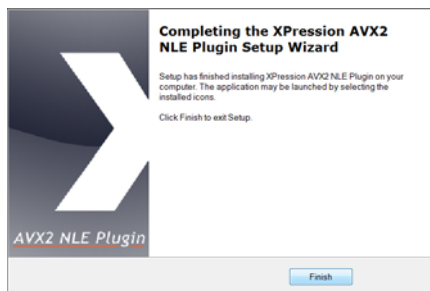
11. Click **Next**.

The **Ready to install** screen opens.



12. Click **Install** to begin installing the plugin.

A progress bar displays the installation status. After the installer finishes installing the required files, the **Completing the XPression AVX2 NLE Plugin Setup** screen opens.



13. Click **Finish**.

## Installing the ENPS Gateway

XPression should be installed prior to installing the ENPS Gateway.

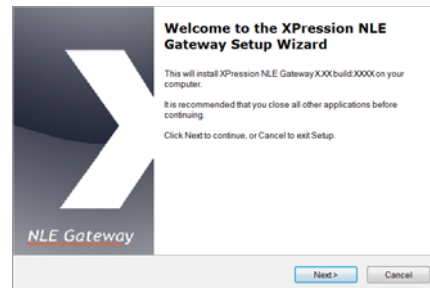
**For More Information on...**

- installing XPression, refer to the *XPression Software Getting Started Guide*.

To install the **ENPS gateway**:

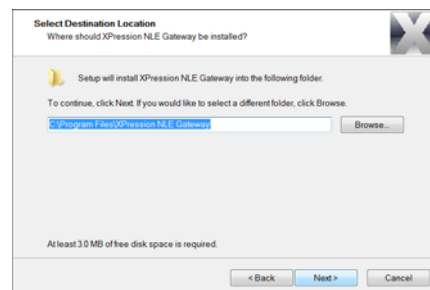
1. Log on to the XPression computer as a user that can install software.
2. Shut down all Windows applications.
3. Copy the **xpNLEGateway-x.xx\_xxxx.exe** file to the computer.
4. Double-click the **xpNLEGateway-x.xx\_xxxx.exe** icon.

The **Setup - XPression MOS Gateway** wizard opens.



5. Click **Next**.

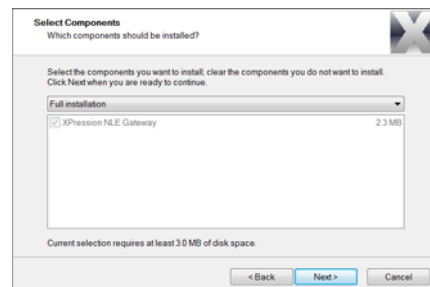
The **Select Destination Location** screen opens.



6. Accept the current destination folder or click **Browse** to select a custom folder.

7. Click **Next**.

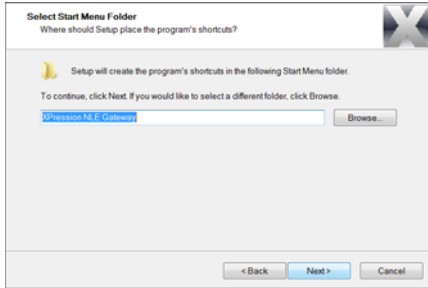
The **Select Components** screen opens.



8. Accept the default component selection.

9. Click **Next**.

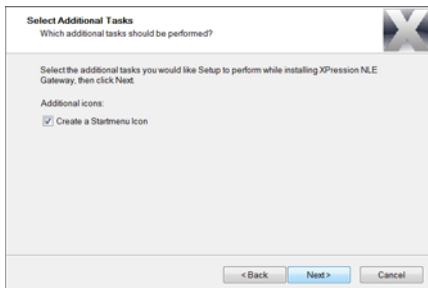
The **Select Start Menu Folder** screen opens.



10. Accept the default Start menu folder for the program shortcut, or click **Browse** to select a custom Start menu folder.

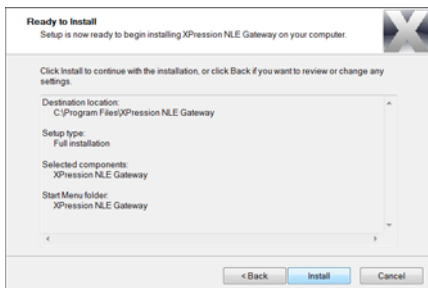
11. Click **Next**.

The **Select Additional Tasks** screen opens.



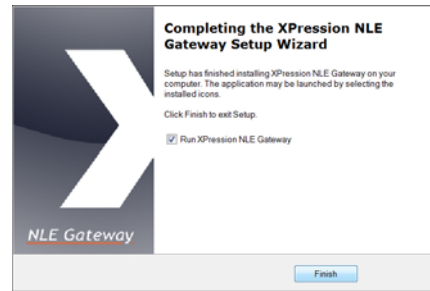
12. Accept the default to create a separate **Start** menu icon. Deselect the option if you do not want to create a separate **Start** menu icon.
13. Click **Next**.

The **Ready to install** screen opens.



14. Click **Install** to begin installing the ENPS Gateway.

A progress bar displays the installation status. After the installer finishes installing the required files, the **Completing the XPression NLE Gateway Setup** screen opens.



15. Click **Finish**.

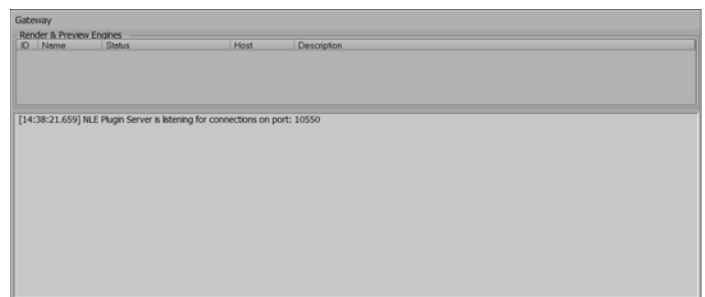
## Configuring the ENPS Gateway

You must add a Preview Engine to the ENPS Gateway in order to populate templates in the NewsCutter plugin.

**To configure the ENPS Gateway:**

1. Use the **Start** menu to select **Programs > XPression NLE Gateway > XPression NLE Gateway**.

The **NLE Gateway** screen opens.

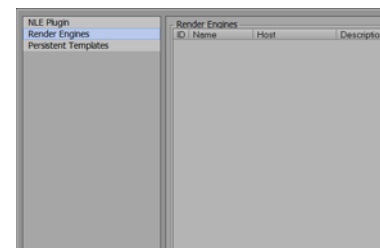


2. Use the **Gateway** menu to select **Settings**.

The **Settings** screen opens.

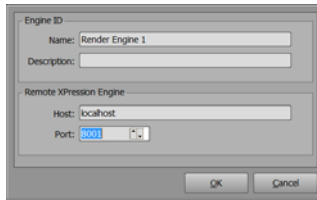
3. Click **Render Engines**.

The **Render Engine** pane opens.



4. Right click in the **Render Engine** pane and select **Add**.

The **Add Preview Engine** screen opens.



5. Type a name and description for the new Preview Engine.
6. Set the **Host** to *localhost* and the **Port** to *8001*.
7. Click **OK**.
8. Press **Enter** to close the **Settings** screen.
9. The **NLE Gateway** screen updates to show the new Preview Engine.

