

Integrating XPression with Avid Command

XPression can be integrated with Avid Command to provide a complete playout solution of graphics from a MOS rundown.

Prerequisites

To integrate XPression with Avid Command, the following components are required:

- Avid iNews version 2.6 or higher
- Avid iNews Command version 2.10
- Avid iNews MOS Gateway
- Avid iNews COM Licensing to support roStorySend messages
- XPression MOS Gateway version 3.5 or higher
- XPression Studio or BlueBox version 3.5 or higher
- XPression Command plugin
- XPression MOS ActiveX plugin version 3.5 or higher
- XPression BlueBox OFL Preview Engine (recommended)

★ Avid Command might have other prerequisites. Please check with Avid for all requirements related to Command.

Workflow Summary

Graphics are added to the MOS rundown by using the XPression MOS ActiveX plugin to choose a template and populate the template fields. The channel for playout is entered into the graphic at this time. The graphic is added to a story inside the iNews rundown.

When the rundown is monitored to the Avid MOS Gateway it is pushed to the XPression MOS gateway, which will create the graphic item on the XPression Studio or BlueBox engine. Simultaneously, the graphic also appears in the iNews Command rundown.

Configuring iNews

Configuring iNews is different from Ross Video's standard MOS Workflow (without Command).

SYSTEM.MAP

Set up the system map so that Command is configured as a wnaserver. Place the host name of the Command server after the `wnasvr` tag along with a `Command-CG` type.

Under the `wnasvr` line should be a CG device line along with the channel group name, default channel, and a style name (not used by XPression).

★ Consult the Avid Command ICG documentation for full details on configuring Avid Command.

An Avid MOS Gateway configuration line should also be present in the rundown map. This line will begin with `mossvr` followed by the hostname of the Avid MOS Gateway and `bcs-master` type.

Under the `mossvr` should be a line defining a MOS device that represents the XPression MOS Gateway. It requires an AMCP name and the `storytext` tag. This defines where the Avid MOS Gateway will publish all of the graphics.

Example:

```
show.dev.xpression.rundown show.dev.xpression - - 1900
;
<server type> <server name> <backup server> <CAWS form>
wnasvr      cmdsvr      -      Command-CG
            CG          xpress -      1      style
mossvr      rossmosgw  -      bcs-master
            mos        xpnacp  -      storytext
```

SYSTEM.MOS-MAP

The MOS-MAP is used to define the MOS ID used for the XPression graphics in the rundown and convert the MOS ID into a channel group name.

Example:

```
XPRESSID      xpress 1 2 3 4
DUMMYID       xpnacp
```

In the above example, the MOS ID is `XPRESSID` and the channel group is `xpress` which must match the channel group defined in the `SYSTEM.MAP` file. The `1 2 3 4` represents the channels assigned to the channel group. If the system is a two channel system, it will be `1 2`.

The `DUMMYID` is a dummy MOS ID that is not used but provides a placeholder for the `xpnacp` AMCP name. This AMCP name is the AMCP address of the XPression MOS Gateway as defined in the Avid MOS Gateway.

Avid MOS Gateway mosconfig.xml

In the Avid MOS Gateway, configure the XPression MOS Gateway to be a device in the mosconfig.xml.

The following example shows a mosDevice configuration block for an XPression system with a MOS ID of `XPRESSID` and an AMCP name of `xpnamcp`.

Example:

```
<mosDevice>
  <names>
    <mos>XPRESSID</mos>
    <amcp>xpnamcp</amcp>
    <network>xpression01</network>
  </names>
  <roSlugMaps>
    <roSlugMap>
      <iNewsRunningOrderName>INEWS-
SVR3/SHOW.DEV.XPRESSION.RUNDOWN</iNewsRunningOrderName>
      <MOSroSlug>Xpression</MOSroSlug>
    </roSlugMap>
  </roSlugMaps>
  <handlesEmptyStories>YES</handlesEmptyStories>
  <handlesRoStoryMoveMultiple>YES</handlesRoStoryMoveMultiple>
  <handlesRoItemLevelCommands>NO</handlesRoItemLevelCommands>
  <prependPageNumber>YES</prependPageNumber>
  <prependSeparator>--</prependSeparator>
  <prependStringForEmptyPageNumber>NO PAGE</prependStringForEmptyPageNumber>
  <sendRoCreateOnStartLoad>NO</sendRoCreateOnStartLoad>
  <handlesSpecMosReqAll>YES</handlesSpecMosReqAll>
  <ignoreItemStatusInRoAck>NO</ignoreItemStatusInRoAck>
  <handlesRoStorySend>YES</handlesRoStorySend>
  <handlesRoStorySendNSMLX>YES</handlesRoStorySendNSMLX>
  <retryTimeout>10</retryTimeout>
  <statusTranslations>
```

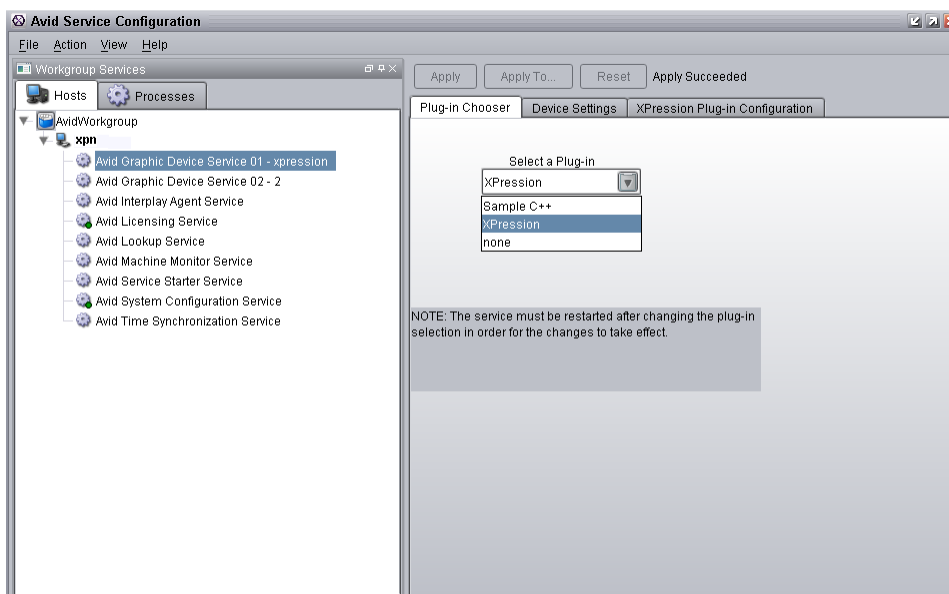
```
<statusUnknown>UNKNOWN</statusUnknown>
<statusUnavailable>NOT READY</statusUnavailable>
<statusUnavailable>DELETED</statusUnavailable>
<statusAvailable>READY</statusAvailable>
<statusAvailable>NEW</statusAvailable>
<statusCued>CUED</statusCued>
<statusPlaying>PLAY</statusPlaying>
<statusPaused>PAUSE</statusPaused>
<statusStopped>STOP</statusStopped>
<statusTensionReleased/>
<statusPlayRequested/>
<statusRewinding/>
</statusTranslations>
<mosObjReplication>
  <trigger>off</trigger>
  <replicationTime>12:31:15 PM</replicationTime>
  <clearQueue>false</clearQueue>
  <path/>
  <mosItemBrowserProgID/>
  <mosItemEditorProgID/>
</mosObjReplication>
</mosDevice>
```

Configuring iNews Command

★ Refer to the Avid iNews Command ICG document for full details on configuring Command. Only some of the possible configuration options are shown in this section.

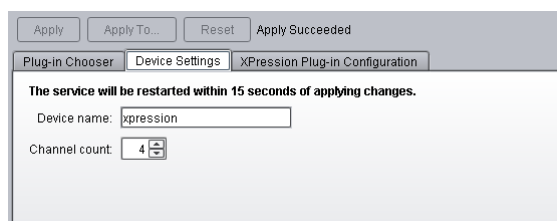
To configure the network settings:

1. Open Avid Service Configuration.
2. From the **Hosts** tab in the **Workgroup Services** area, select **Avid Graphic Device Service**.
3. From the **Plug-in Chooser** tab, from the **Select a Plug-in** drop-down, select **XPression**.



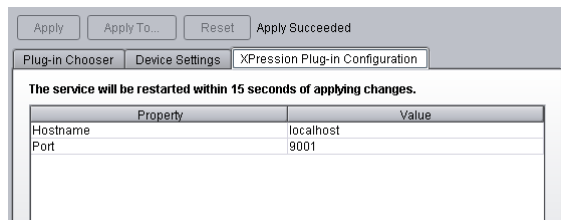
4. In the **Device Settings** tab, perform the following:
 - a. In the **Device name** field, enter the name of the device.
 - b. In the **Channel count** field, enter or select the total number of channels.

This should be the number of virtual channels as defined in the XPression MOS Gateway.



5. In the **XPression Plug-in Configuration** tab, perform the following to connect to the XPression MOS Gateway:
 - a. Enter the hostname for the plugin.
 - b. Enter the port for the plugin.

The port should be 9001 unless it has been manually changed on the MOS Gateway.

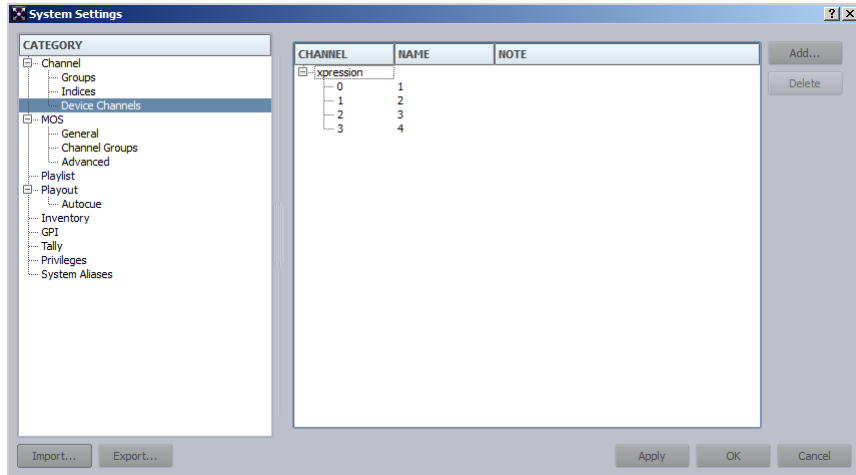


To configure the device channels:

1. Open **iNews Command**.
2. From the **Tools** menu, select **System Settings**.

The **System Settings** screen opens.

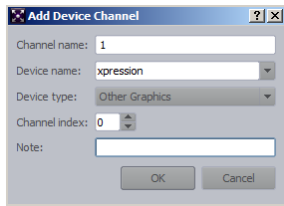
3. In the **Category** section, expand the **Channel** tree and select **Device Channels**.



4. Select **Add**.

The **Add Device Channel** dialog opens:

- The **Channel name** should be the name specified in the iNews channel group.
- The **Device name** should match the name entered in the Avid Graphic Device Service configuration.
- The **Device type** should be **Other Graphics**.
- The **Channel index** for the first channel should be **0**.



5. Select **OK**.

The **Add Device Channel** dialog closes.

Repeat steps **1** to **9** for each XPression Virtual Channel, incrementing the **Channel index** for each channel.

6. In the **System Settings** screen, select **Apply** to apply the changes.

To configure the channel groups:

1. In the **Category** section, expand the **Channel** tree and select **Groups**.
2. Select **Add**.

The **Create New Channel Group** dialog opens.

3. In the **Create New Channel Group** dialog, do the following:
 - a. In the **Name** field, enter the channel group name as defined in iNews (for example, 'xpress').
 - b. Add the device channels to the group.

Create New Channel Group

Name:

Notes:

Channels:

NAME	TYPE	RIPPLE GROUP
1	Standard	
2	Standard	
3	Standard	
4	Standard	

Up
Down
Add
Delete

Channel detail

Channel type:

Primary:

Mirror:

Preview:

Ripple group:

Autocue

☐ Disable autocue for channel group

Graphic Page Range

Minimum: Maximum:

GPO

Play: Eject: Eject delay (ms):

OK Cancel

- c. Select **OK**.

The **Create New Channel Group** dialog closes.

4. In the **System Settings** screen, select **Apply** to apply the changes.
5. In the **Category** section, expand the **MOS** tree and select **Channel Groups**.

System Settings

CATEGORY

- Channel
 - MOS
 - General
 - Channel Groups
 - Advanced
 - Playlist
 - Layout
 - Inventory
 - GPI
 - Tally
 - Privileges
 - System Aliases

NAME	CHANNELS	NOTE
xpress	1 2 3 4	

Add...
Remove

Import... Export... Apply OK Cancel

6. Select **Add**.

The **Channel Groups** dialog opens.

To add the channel group:

1. In the **Channel Groups** dialog, add the channel group that was created in the previous procedure.
2. Select **OK**.

The **Channel Group** dialog closes.

3. In the **System Settings** screen, select **Apply** to apply the changes.
4. Select **OK** to exit the **System Settings**.
5. Restart iNews and Command.
6. Re-monitor the rundowns.

Configuring the XPression MOS Gateway

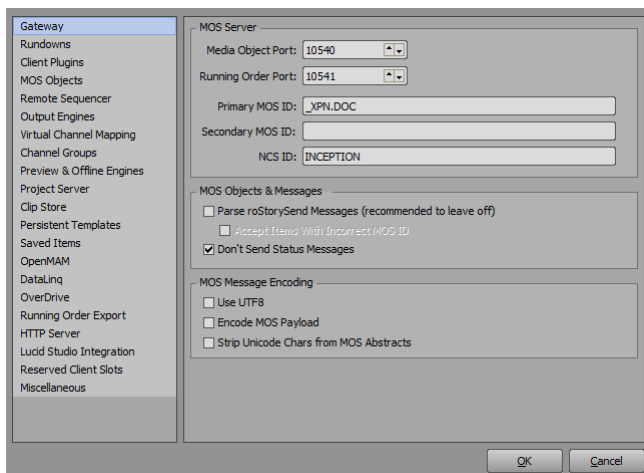
When configuring the XPression MOS Gateway, use the same MOS ID as entered in the iNews configuration. The **Parse roStorySend Messages** also needs to be enabled. This is required because iNews can only send a MOS object to a single device, and in this workflow it needs to be sent to the Command server. Therefore, the only way that XPression can receive the objects and build the graphic items is to parse them from the roStorySend MOS messages.

To configure the XPression MOS Gateway:

1. In the **XPression MOS Gateway**, from the **Gateway** menu, select **Settings**.

The **XPression MOS Gateway - Settings** dialog box opens.

2. Select the Gateway panel to set XPression MOS Gateway settings.



3. In the **MOS Server** section, do the following:
 - a. In the **Media Object Port** field, enter or select a port number for the media object.
 - b. In the **Running Order Port** field, enter or select a port number for the running order.
 - c. In the **Primary MOS ID** field, enter the MOS ID used in iNews.
 - d. In the **Secondary MOS ID** field, enter a secondary MOS ID if necessary.
 - e. In the **NCS ID** field, enter the iNews ID.
4. In the **MOS Objects & Messages** section, do the following:
 - a. Select the **Parse roStorySend Messages** checkbox to parse all incoming MOS objects, including those for unrelated devices.

It is recommended that this option is left unselected if not using multiple gateways.
 - b. Select the **Accept Items With Incorrect MOS ID** checkbox to allow the XPression Gateway to accept items with incorrect MOS IDs.

This requires parsing the roStorySend MOS messages to see the other MOS ID objects.
 - c. Select the **Don't Send Status Messages** checkbox to disable reporting the MOS status of graphics and clips to iNews.
5. In the **MOS Message Encoding** section, do the following:
 - a. Select the **Use UTF8** checkbox to use 8-bit character encoding.
 - b. Select the **Encode MOS Payload** checkbox to encode the MOS payload of MOS items to avoid issues with Unicode and older versions of iNews.
 - c. Select the **Strip Unicode Chars from MOS Abstracts** checkbox to strip Unicode characters in the MOS abstracts or slugs if iNews does not support Unicode text.
6. Select **OK**.

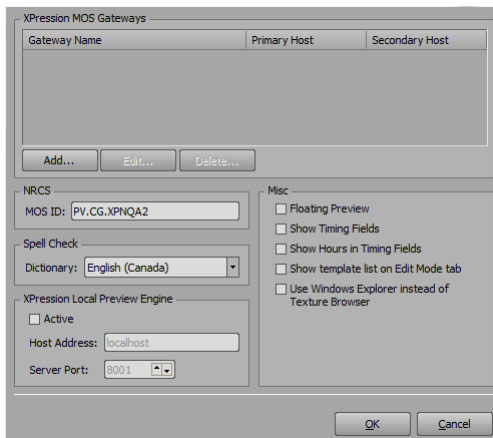
Configuring the XPression ActiveX Plugin

The XPression ActiveX plugin requires the Host address of the XPression MOS Gateway, as well as the MOS ID of the XPression device as configured in the gateway and in iNews.

To configure the XPression ActiveX plugin:

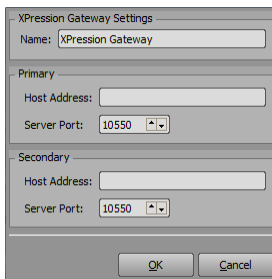
1. In the **XPression ActiveX Plugin**, from the **Options** menu, select **Configuration**.

The **XPression ActiveX Plugin Configuration** dialog opens.



2. In the **XPression MOS Gateways** section, click **Add**.

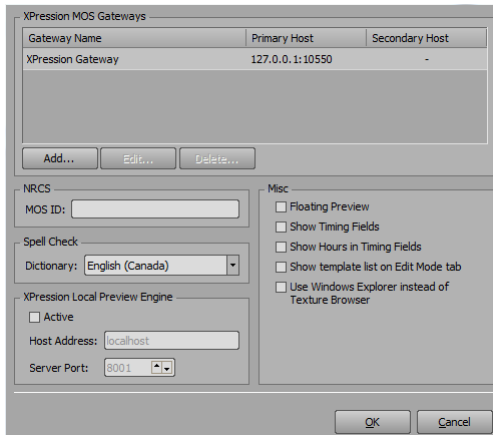
The **XPression Gateway Config** dialog opens.



3. In the **XPression Gateway Settings** section, in the **Name** field, enter a name for the XPression Gateway.
4. In the **Primary** section, do the following:
 - a. In the **Host Address** field, enter the IP address of the XPression MOS Gateway.
 - b. In the **Server Port** field, enter or select the port number of the server for the XPression MOS Gateway.
5. If necessary, in the **Secondary** section, do the following:
 - a. In the **Host Address** field, enter the IP address of the secondary XPression MOS Gateway.
 - b. In the **Server Port** field, enter or select the port number of the server for the secondary XPression MOS Gateway.

6. Select **OK**.

The **XPression Gateway Config** dialog closes and the gateway is added to the gateway list in the **XPression MOS Gateways** section.



7. In the **NRCS** section, in the **MOS ID** field, enter the MOS ID that has been entered in the XPression MOS Gateway.
8. Select **OK**.

For information on configuring the **Spell Check**, **XPression Local Preview Engine**, and **Misc** sections, refer to the *XPression Distributed Workflow User Guide*.

Limitations

Avid Command includes support for building playlists without using MOS, but this is only for graphics that do not have any replaceable data fields. This workflow is not supported with XPression; all graphics must be entered through the newsroom system. Any changes to the template data of a graphic must be made inside the newsroom plugin.

Assigning Channels to Graphics

The payout channel for a graphic is set from inside the XPression ActiveX plugin. Avid Command has the ability to change the channel to which a graphic is assigned. This is a temporary change inside Command and could be lost if an update from the newsroom arrives that has modified the graphic. An XPression engine normally only contains the graphics that were originally assigned to it. Therefore, unless special measures are taken, it is not possible to change the channel in Command that would require the graphic to be played out from a different engine. It is possible that this could be achieved by editing the Virtual Channel mapping in the MOS Gateway to assign multiple engines to the same Virtual Channel.