

Avid Media Composer/NewsCutter and XPression Gateway Installation and Configuration

This Appnote describes how to install the XPression plugin for Avid Media Composer/NewsCutter and the XPression Gateway. Both are required to allow you to use XPression scenes with Media Composer/NewsCutter.

System Requirements

The XPression plugin for Media Composer/NewsCutter must be installed on a PC with Avid Media Composer or NewsCutter installed. Ensure that this PC meets the Avid system requirements.

The ENPS Gateway must be installed on a PC with XPression or the XPression Offline Engine installed. Ensure that this PC meets the XPression system requirements.

During installation, your computer may display security warnings depending on the security policies at your installation. Please allow the installation to proceed. If you have questions about safely installing software, consult your IT department.

Removing 'Avid user enabler for user mode' File for Media Composer

If using Media Composer software, a file called 'Avid user enabler for user mode' needs to be removed before being able to launch Media Composer.

To remove the file:

1. In Windows, open the **Computer Management** window.
2. Select **Local Users and Groups** from the **System Tools** menu tree.
3. Double-click the **Users** folder to open it.
4. Right-click on the file **Avid user enabler for user mode** and select **Delete** from the shortcut menu to delete the file.

Installing the Media Composer/NewsCutter Plugin

XPression or the XPression Offline Engine and Avid Media Composer/NewsCutter should be installed prior to installing the plugin.

For more information on:

- installing XPression, refer to the *XPression Software Quick Start*.
- installing Avid Media Composer/NewsCutter, refer to the Avid documentation.

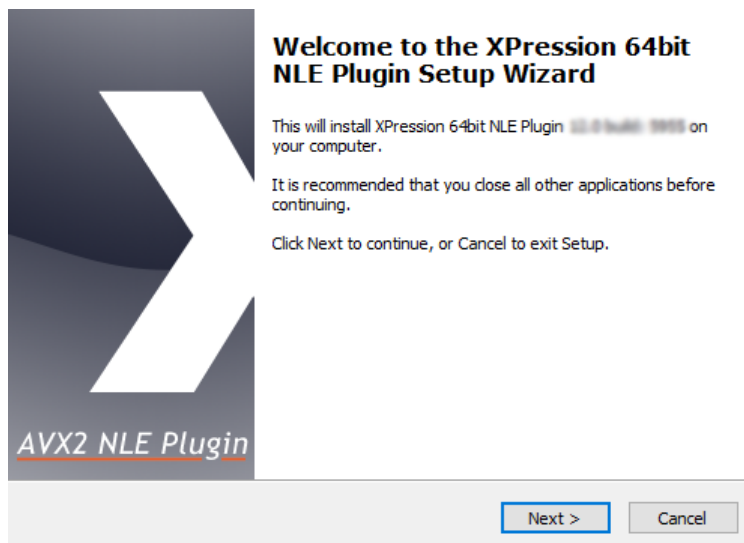
To add the Media Composer/NewsCutter plugin installer to a computer:

1. Login to the Media Composer/NewsCutter computer as a user with permission to install software.
2. Shut down all Windows applications.
3. Copy the **xpNLEPlugin64-x.xx_xxxx.exe** file to the computer.

To install the Media Composer/NewsCutter plugin:

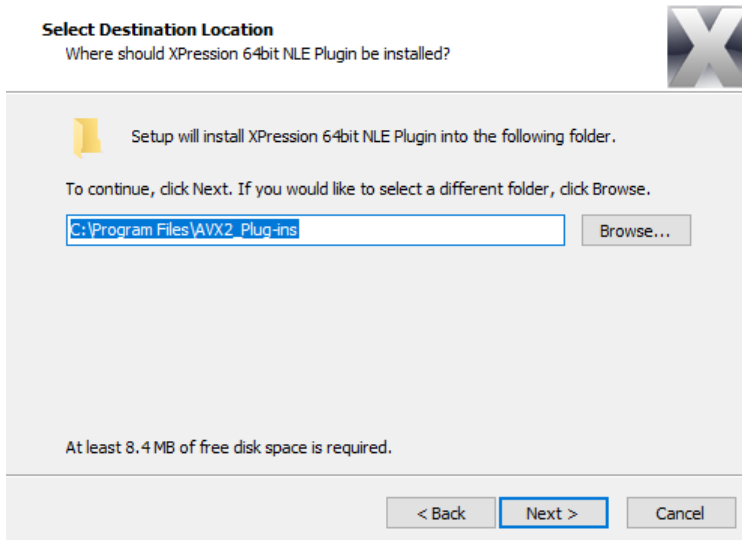
1. Double-click the **xpNLEPlugin64-x.xx_xxxx.exe** file.

The **Setup - XPression 64bit NLE Plugin** wizard opens.



2. Select **Next**.

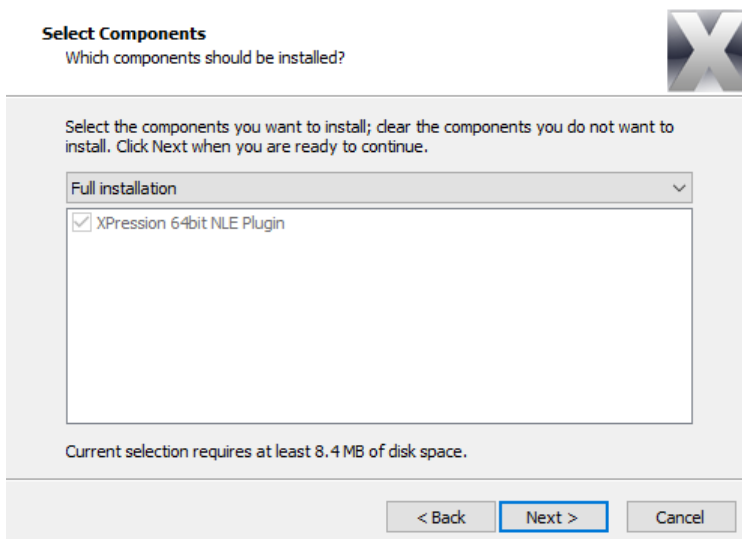
The **Select Destination Location** page opens.



3. In the **Select Destination Location** page, do one of the following:

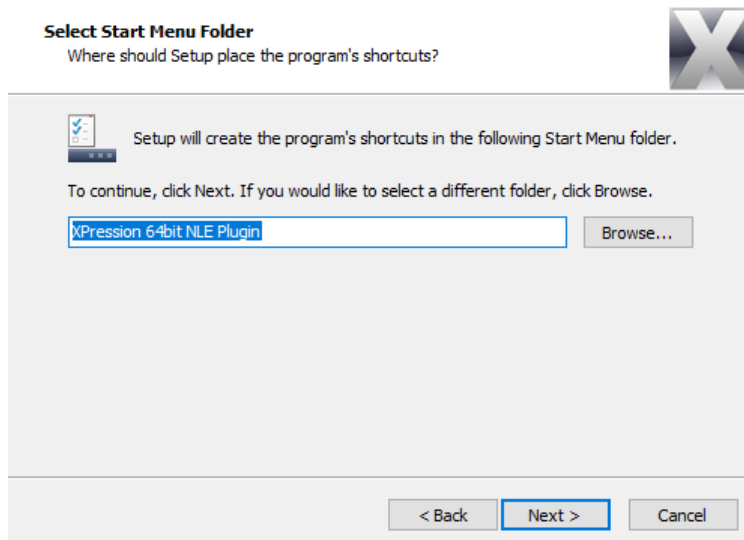
- Select **Next** to install the plugin in the default folder location.
- Select **Browse** to choose a different folder location and then select **Next** to install the plugin in the selected folder.

The **Select Component** page opens.



4. Select **Next**.

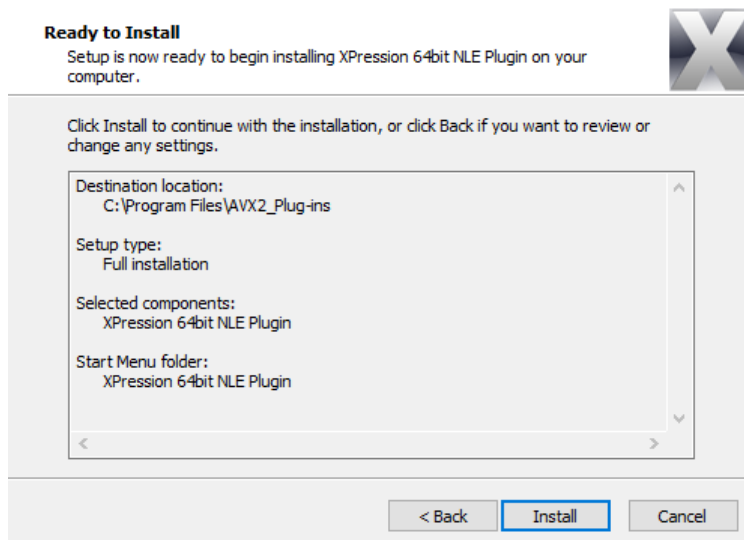
The **Select Start Menu Folder** page opens.



5. In the **Select Start Menu** page, do one of the following:

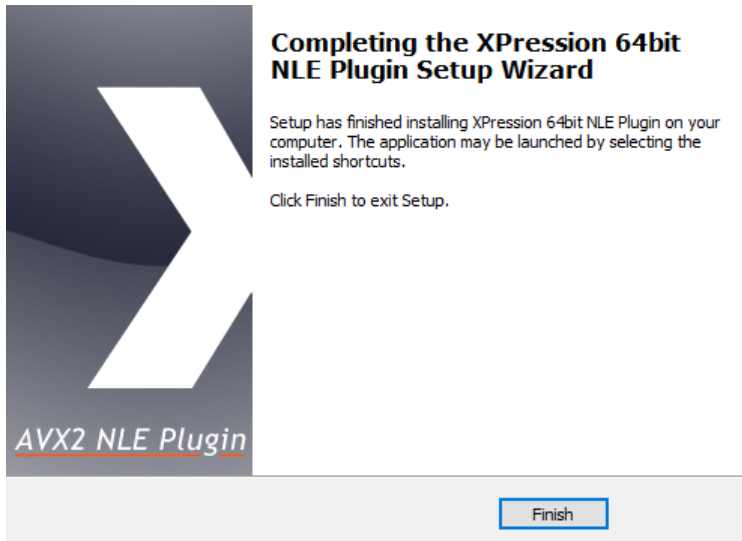
- Select **Next** to accept the default location for the plugin shortcut.
- Select **Browse** to choose a custom folder and then select **Next** to add the plugin shortcut to the selected folder.

The **Ready to Install** page opens.



6. Select **Install** to install the plugin.

A progress bar displays the installation status. After the installer finishes installing the required files, the **Completing the XPression AVX2 NLE Plugin Setup** page opens.



7. Select **Finish**.

Installing the XPression Gateway

XPression should be installed prior to installing the XPression Gateway.

For more information on installing XPression, refer to the *XPression Software Quick Start*.

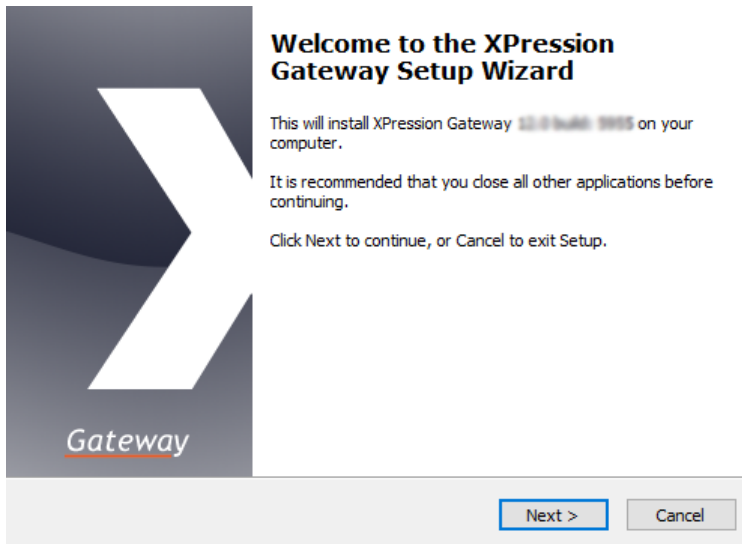
To add the XPression Gateway installer to a computer:

1. Login to the XPression computer as a user with permission to install software.
2. Shut down all Windows applications.
3. Copy the **xpGateway-x.xx_xxxx.exe** file to the computer.

To install the XPression Gateway:

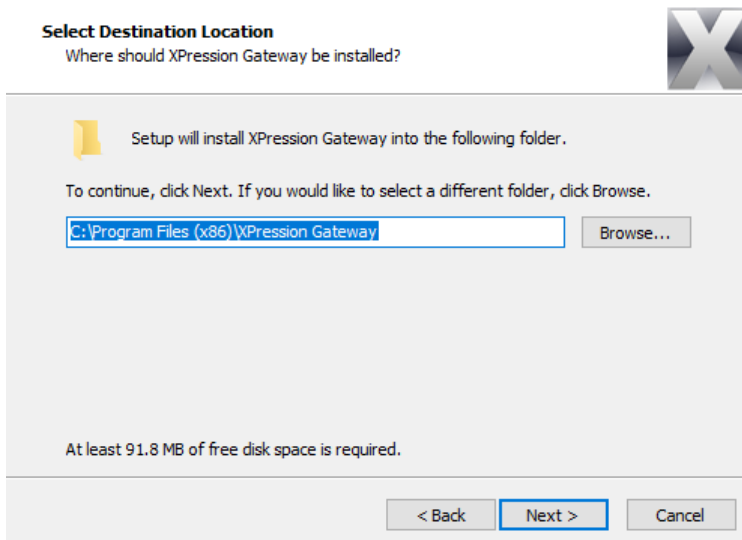
1. Double-click the **xpGateway-x.xx_xxxx.exe** file.

The **Setup - XPression Gateway** wizard opens.



2. Select **Next**.

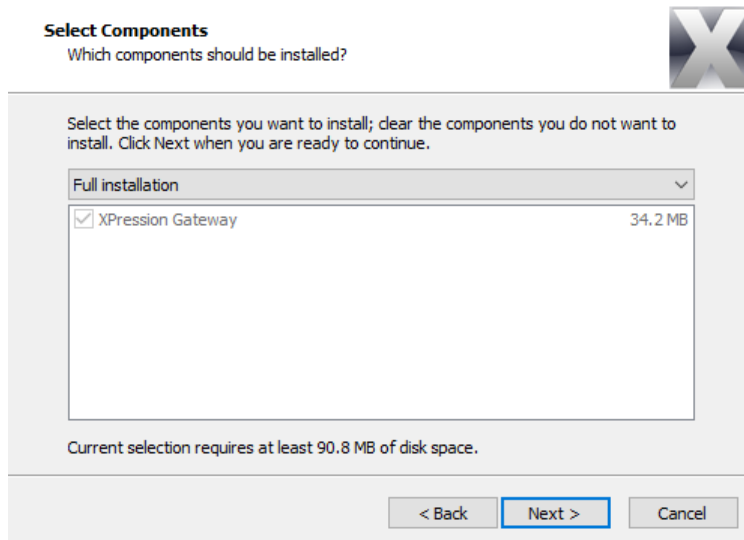
The **Select Destination Location** page opens.



3. In the **Select Destination Location** page, do one of the following:

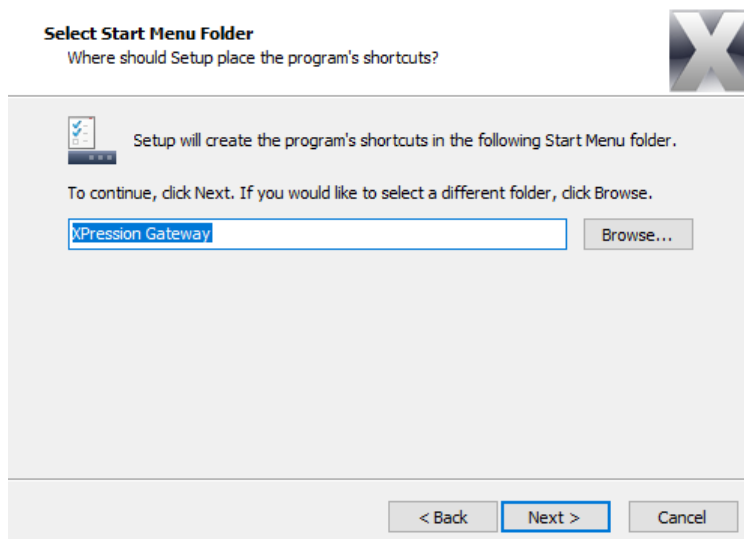
- Select **Next** to install the XPression Gateway in the default folder location.
- Select **Browse** to choose a different folder location and then select **Next** to install the XPression Gateway in the selected folder.

The **Select Component** page opens.



4. Select **Next**.

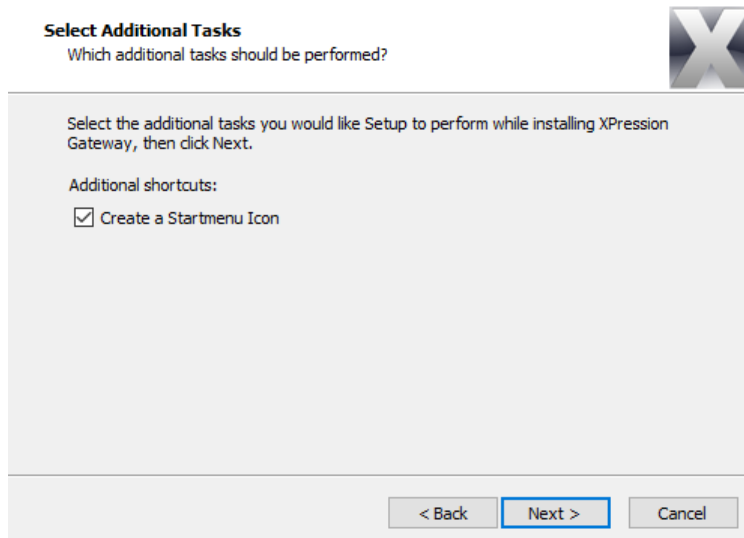
The **Select Start Menu Folder** page opens.



5. In the **Select Start Menu** page, do one of the following:

- Select **Next** to accept the default location for the XPression Gateway shortcut.
- Select **Browse** to choose a custom Start menu folder and then select **Next** to add the XPression Gateway shortcut to the selected Start menu folder.

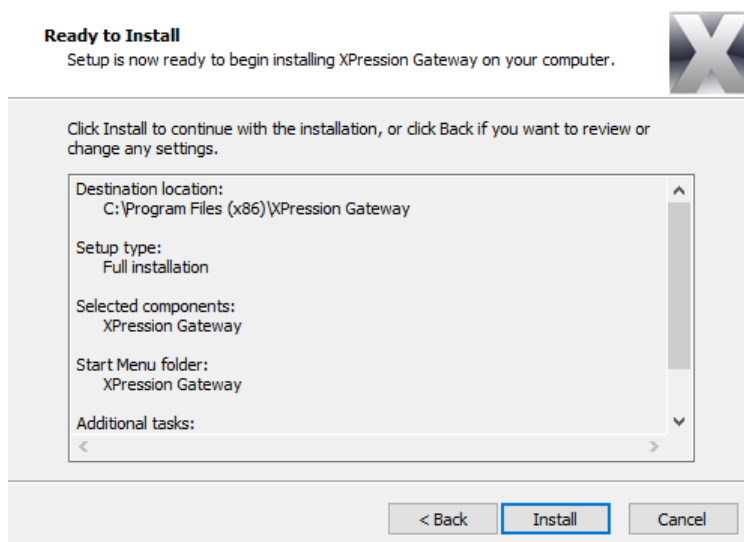
The **Select Additional Tasks** page opens.



6. In the **Select Additional Tasks** page, do one of the following:

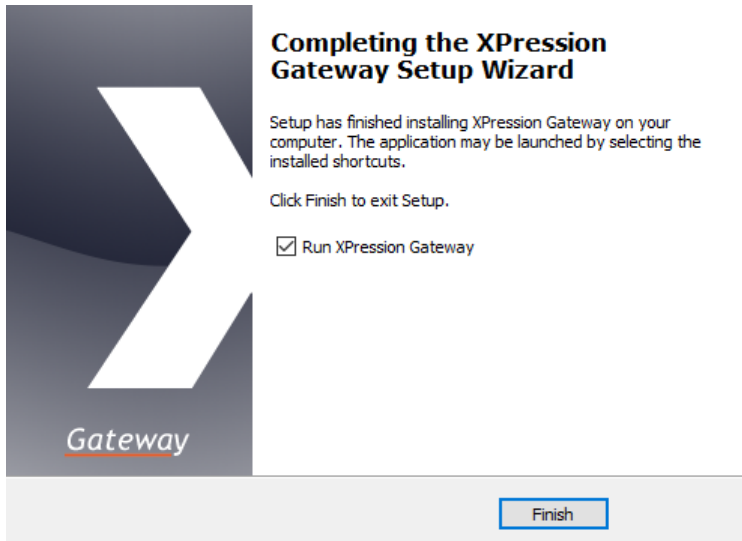
- Select **Next** (a Start menu icon will be created).
- Deselect the **Create Startmenu Icon** checkbox and select **Next** (a Start menu icon will not be created).

The **Ready to Install** page opens.



7. Select **Install** to install the XPression Gateway.

A progress bar displays the installation status. After the installer finishes installing the required files, the **Completing the XPression Gateway Setup** page opens.



8. Select **Finish**.

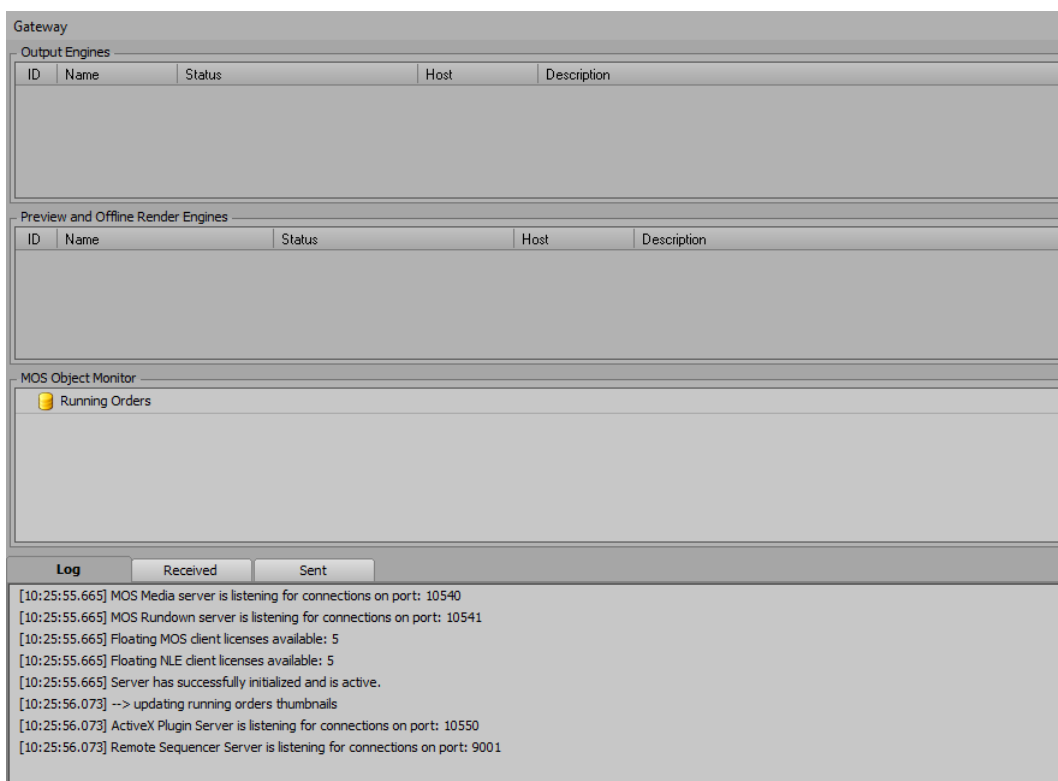
Configuring the XPression Gateway

A preview engine must be added to the XPression Gateway in order to populate templates in the Media Composer/NewsCutter.

To configure the XPression Gateway:

1. In Windows, select **Start > Programs > XPression Gateway > XPression Gateway**.

The **XPression Gateway** opens.

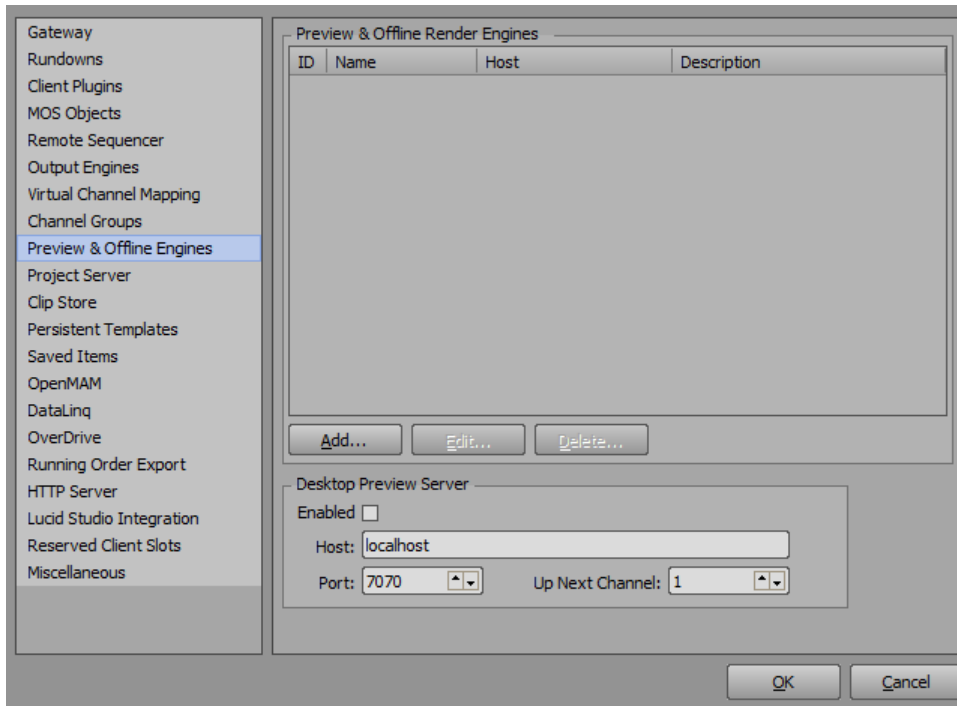


2. Select **Gateway > Settings**.

The **XPression Gateway - Settings** dialog opens.

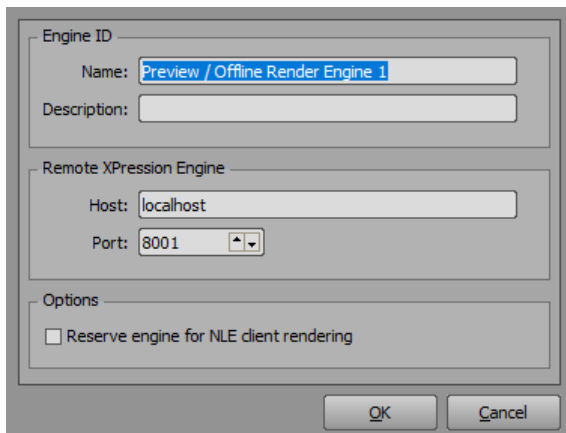
3. In the **XPression Gateway - Settings** dialog, select **Preview & Offline Engines**.

The **Preview & Offline Render Engines** panel opens.



4. In the **Preview & Offline Render Engines** section, select **Add**.

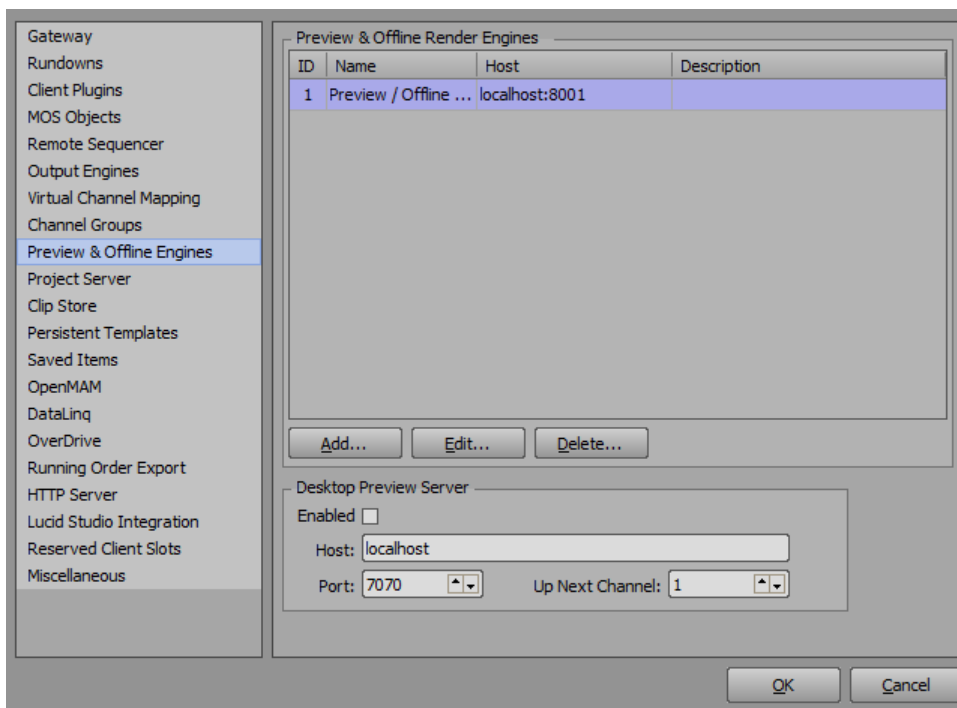
The **XPression Preview Engine** dialog opens.



5. In the **Engine ID** section, do the following:
 - In the **Name** field, enter a name for the preview engine.
 - In the **Description** field, enter a unique description for the preview engine.

6. In the **Remote XPression Engine** section, do the following:
 - In the **Host** field, enter the host address for the engine or use the default (localhost).
 - In the **Port** field, enter the port number for the engine or use the default (8001).
7. In the **Options** section, select the **Reserve engine for NLE client rendering** checkbox to send preview requests from the NLE to any offline engine(s) reserved for NLE use.
8. Select **OK**.

The **XPression Preview Engine** dialog closes and the engine is added to the list in the **Preview & Offline Render Engines** section.



9. Select **OK**.

For information on the **Desktop Preview Server** section, refer to the *XPression Desktop Preview Server User Guide* and the *XPression Distributed Workflow User Guide*.