

## Installing the XPression™ ActiveX NCS Plugin

This Appnote describes how to install the XPression ActiveX plugin for newsroom systems.

### System Requirements

The ActiveX NCS plugin must be installed on a PC with a supported newsroom system installed. Currently supported newsroom systems are:

- ENPS
- iNews
- Octopus
- Annova OpenMedia
- Autocue

Ensure that this PC meets the newsroom system requirements.

During installation, your computer may display security warnings depending on the security policies at your installation. Please allow the installation to proceed. If you have questions about safely installing software, consult your IT department.

### Licensing

The XPression ActiveX NCS plugin requires a license to operate. Licenses are verified by the XPression MOS/NLE Gateway PC when the XPression ActiveX NCS plugin communicates with it.

If the number of concurrent connections exceeds the number of floating plugin licenses you have purchased, you will be unable to access the XPression ActiveX NCS plugin until a license is available.

### Installing the ActiveX NCS Plugin

The newsroom system and the XPression MOS/NLE Gateway should be installed prior to installing the plugin.

#### For More Information on...

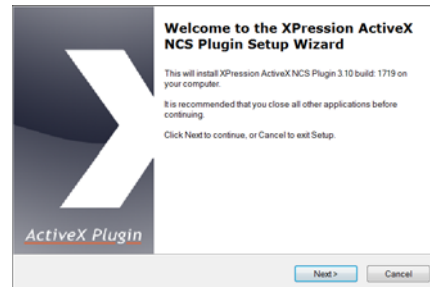
- installing the XPression MOS/NLE Gateway, refer to the appnote, *“Installing and Configuring the XPression™ MOS/NLE Gateway”*.

#### To install the ActiveX NCS plugin:

1. Log on to the newsroom system computer as a user that can install software.
2. Shut down all Windows applications.

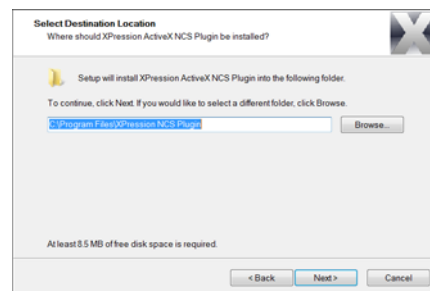
3. Copy the **xpMOSPlugin-x.xx\_xxxx.exe** file to the computer.
4. Double-click the **xpMOSPlugin-x.xx\_xxxx.exe** icon.

The **Setup - XPression ActiveX NCS Plugin** wizard opens.



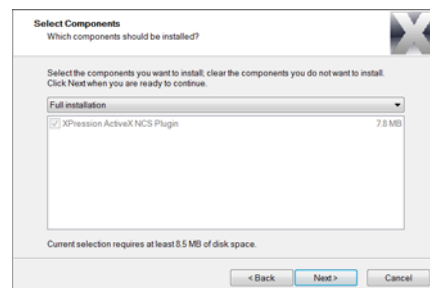
5. Click **Next**.

The **Select Destination Location** screen opens.



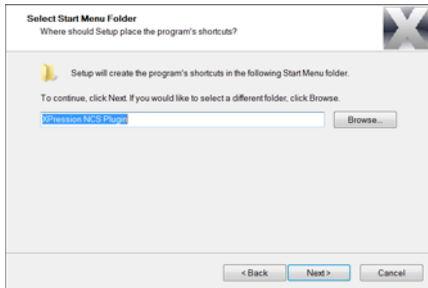
6. Accept the current destination folder or click **Browse** to select a custom folder.
7. Click **Next**.

The **Select Component** screen opens.



8. Accept the default component selection.
9. Click **Next**.

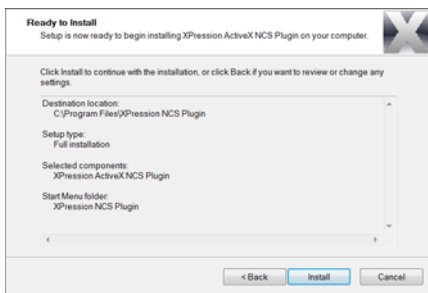
The **Select Start Menu Folder** screen opens.



10. Accept the default folder for the plugin shortcut, or click **Browse** to select a custom folder.

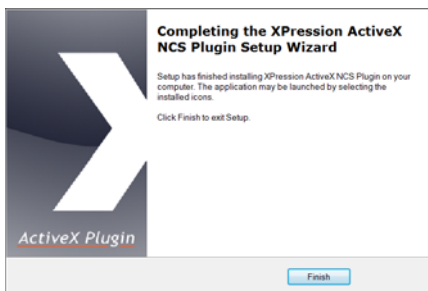
11. Click **Next**.

The **Ready to install** screen opens.



12. Click **Install** to begin installing the plugin.

A progress bar displays the installation status. After the installer finishes installing the required files, the **Completing the XPression ActiveX Plugin Setup** screen opens.



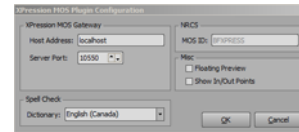
13. Click **Finish**.

## Configuring the XPression ActiveX NCS Plugin

Once installed, access the XPression ActiveX NCS plugin from within your newsroom system for configuration.

**To configure the XPression ActiveX NCS plugin:**

1. Launch your newsroom system and access the ActiveX NCS plugin.



2. Enter the network address of the XPression MOS/NLE Gateway PC in the **Host Address** field.
3. Leave the **Server Port** field at the default value.
4. If you have not enabled the **Enforce the Gateway's MOS ID** option in the XPression MOS/NLE Gateway, enter the MOS ID for your facility in the **MOS ID** field.
5. Click **OK**.