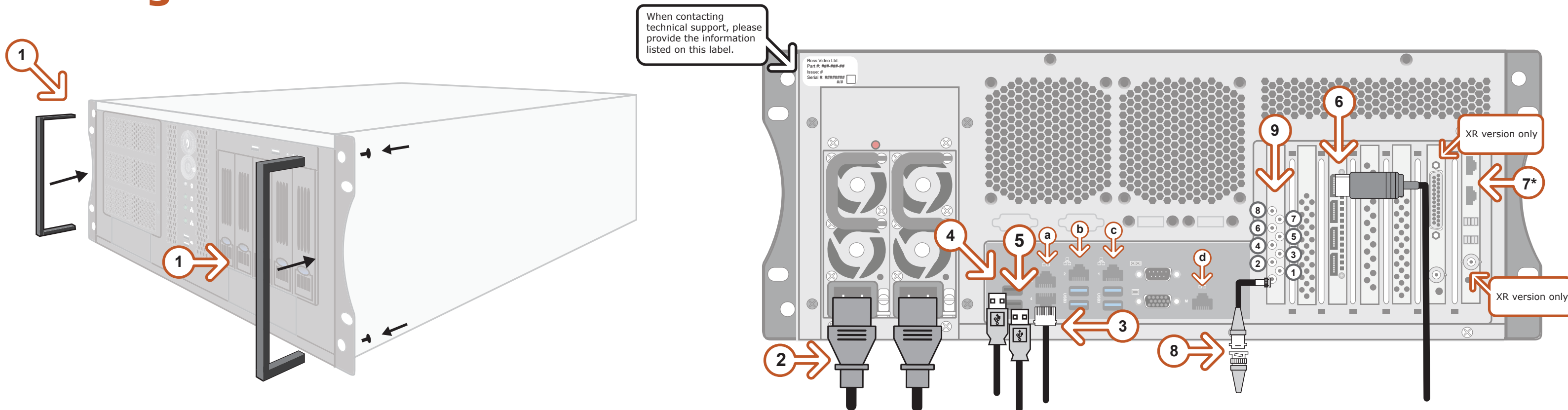


# Getting Started

⚠ CAUTION: Before you set up and operate this product, see the "Important Safety Instructions" in your Manual.



- 1 Attach the handles to the front rack-mount tabs by aligning the handle with the round holes and fastening from the rear with the supplied screws.

Use the supplied Rack Mount Kit to mount the Voyager system in a 19" EIA equipment rack.

*For information on installing the Voyager chassis in a rack, see the provided document "Installing the Chassis in a Rack".*

- 2 Connect power cords from the AC Ports on the Voyager system to the mains power.

*Voyager system power supplies are auto-sensing and can use either 110 VAC or 220 VAC.*

- 3 Plug an Ethernet cable from your Local Area Network into one of the Ethernet ports (a) 2 x 10GbE, (b) 1 x 2.5GbE, (c) 1 x 1.0 GbE.

For information on the IPMI port (d) refer to the Voyager Maintenance Guide.

*Voyager systems can run standalone or accept a connection to a production network. The network connection is also used for the RossTalk / Smart GPI feature.*

- 4 Plug the supplied keyboard into a USB port.
- 5 Plug the supplied mouse into a USB port.
- 6 Connect a Monitor (customer supplied) to any of the four display ports.
- 7\* *XR version only.* Use CAT-6 UTP Ethernet cables to connect the Frame Lock connectors of each Voyager engine in a multiple display network. It does not matter which connector you use. Make the master node in the network the timing master to control the timing on all other nodes.

*If possible, set up an isolated 10 Gbps network using the secondary network interfaces available in Voyager machines.*

- 8 Connect your house reference Genlock signal to the REF HD-BNC connector.

*Voyager systems accept analog blackburst or tri-level sync as reference inputs.*

*Tri-level sync is recommended for HD installations.*

- 9 Connect the HD-BNC end of the pigtail cables to the HD-BNC connectors and attach the SDI cables to the BNC end of the pigtails according to their required destination.

See page 2 for configuration instructions.

*Not all HD-BNC connectors will be active depending on the Voyager hardware. Keep any unused HD-BNC connectors in a safe place for future use.*

*If your facility requires analog outputs, additional outboard digital to analog conversion equipment is available from Ross Video.*

*Continued on other side...*

# Getting Started continued

To configure the DSX LE4:


- 1
- From the folder that contains the **mvConnectorConfig.exe**, open the **Command Prompt**.  
The default installation folder is **C:\Program Files\Matrox DSX.utils\drivers** in Windows.
- 2
- Configure the inputs and outputs as follows:  
  
mvConnectorConfig.exe -XinYout  
Where: X is the number of inputs and Y is the number of outputs  
  
For example, to configure the inputs/outputs for 3 inputs/1 output, type "mvConnectorConfig.exe -3in1out".
- 3
- Press **ENTER**.
- 4
- Reboot your system to update the card with the new I/O configuration.  
  
*Follow the onscreen instructions to reboot your system. The new configuration will be applied after the reboot.*

To launch Voyager:

- 1
- Press the **Power** button on the front of the Voyager system.  
*Ross Video recommends shutting down Voyager systems from the Windows operating system.*
- 2
- Click the Voyager user account icon on the desktop.
- 3
- Log onto the system using the following credentials:  
**Username:** Voyager  
**Password:** beyondinfinity
- 4
- Launch Voyager from the **Start** menu.

SD/HD-SDI	1 in, 1 out	2 in, 1 out	3 in, 1 out	Usage
1	In 1 Fill	In 1 Fill	In 1 Fill	Int composite 1 fill input
2	Out Fill	Out Fill	Out Fill	Composited output or Ext composite fill output
3	--	In 2 Fill	In 2 Fill	Live source input 1 or Int composite 2 fill input
4	--	--	--	None
5	In 1 Key (if required)	In 1 Key (if required)	In 1 Key (if required)	Int composite 1 key input
6	Out Key (if required)	Out Key (if required)	Out Key (if required)	Ext composite key output
7	--	In 2 Key (if required)	In 3 Fill	Int composite 2 key input
8	--	--	--	None

\*Hardware bypass relays are present between 1 & 2, 3 & 4, 5 & 6, and 7 & 8.



**Need Help?**

Technical Support:  
1-844-652-0645 (North America)  
+800 1005 0100 (International)  
Email: techsupport@rossvideo.com

For information on...

- setting up Voyager, see the Voyager Setup Guide available in the C:\Archive folder
- maintenance of the Voyager system, see the Voyager Maintenance Guide in the C:\Archive folder