

PIERO Asset Requirements

This document outlines the technical specifications for assets used in PIERO. All asset types must adhere to the defined requirements to ensure compatibility.

The following asset requirements are described:

[Advert](#)  2

[Area](#)  3

[Arrow Texture](#)  5

[Caption](#)  7

[Circle Textures](#)  9

[Colour Palette](#)  11

[Counter](#)  12

[Down and Distance](#)  14

[End Zone Logos](#)  17

[Field Goal Line](#)  18

[Font](#)  19

[Laser Eye Texture](#)  20

[Line-up Cards](#)  22

[Logos](#)  22

[Magnifier](#)  23

[Markers](#)  24

[Measurement Table](#)  25

[Movies](#)  26

[Red Zone](#)  27

[Safe Area](#)  28

[Spotlight Base](#)  29

[Tactical Board Texture](#)  30

[Text](#)  31

[Title Text](#)  33

[Virtual Stadium](#)  34

Advert

The table below lists the specifications for each Area option, all of which share the same example image shown below.

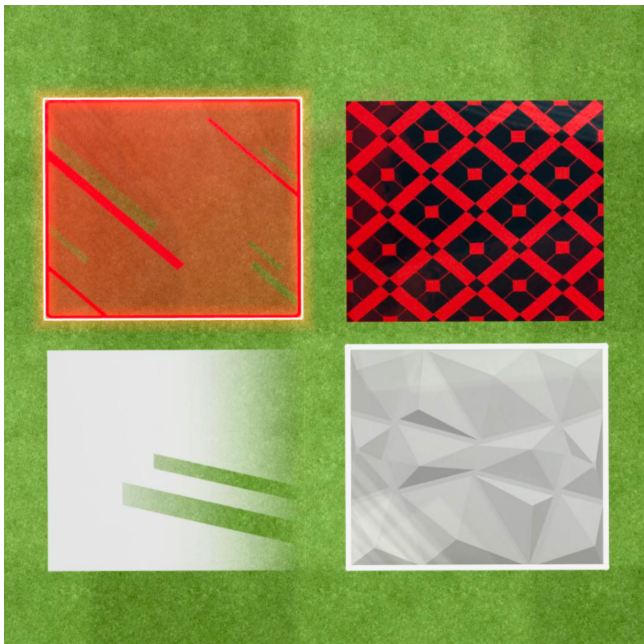


Shared Example Image for Advert Options

| End Zone Options: | Specifications |
|-------------------|---|
| Single Assets | <ul style="list-style-type: none">• File Type: PNG• Recommended Dimensions: 1080 x 1080• Maximum Dimensions: 2180 x 2180• Supports Transparency: True• Bit Depth: 8 bit |
| Sequence Assets | <ul style="list-style-type: none">• File Type: PNG• Recommended Dimensions: 256 x 256• Maximum Dimensions for Sequences: 512 x 512• Supports Transparency: True• Bit Depth: 8 bit |
| Template Assets | <ul style="list-style-type: none">• File Type: XML• Templates created via the template builder. |

Area

The table below lists the specifications for each Area option, all of which share the same example image shown below.



Shared Example Image for All Area Textures

| Area Option: | Specifications: |
|---------------------|---|
| Single Asset | <ul style="list-style-type: none">• File Type: PNG• Recommended Dimensions: 1080 x 1080• Maximum Dimensions: 2160 x 2160• Supports Transparency: True• Bit Depth: 8 bit |
| Image Border Assets | <ul style="list-style-type: none">• File Type: PNG, TGA, JPG• Recommended Dimensions: 1080 x 1080• Maximum Dimensions: 2160 x 2160• Supports Transparency: True (PNG, TGA), False (JPG)• Bit Depth: 8 bit |

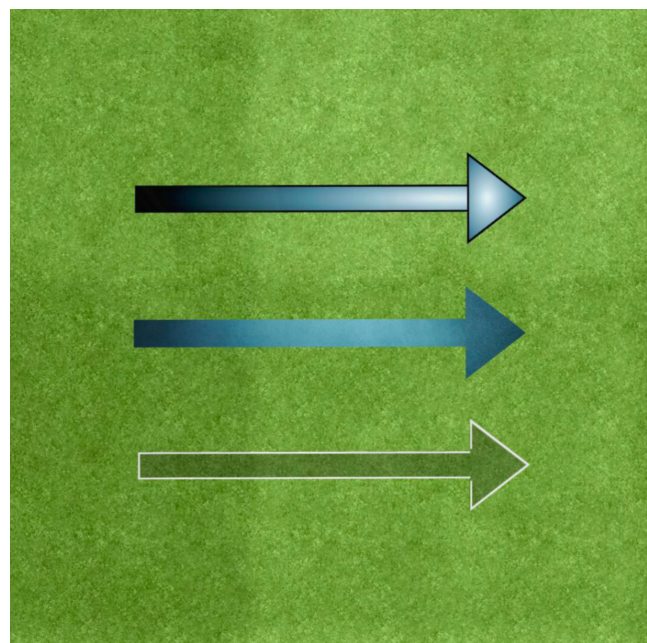


| Area Option: | Specifications: |
|--------------------|---|
| Chalk Board Assets | <ul style="list-style-type: none"> • File Type: PNG • Recommended Dimensions: 128 x Any custom width under 512 px • Maximum Dimensions: 512 x 512 • Supports Transparency: True • Bit Depth: 8 bit <p>★ Images should be white, so they can be recolored in PIERO.</p> |
| Wall Assets | <ul style="list-style-type: none"> • File Type: PNG • Recommended Dimensions: 1080 x 1080 • Maximum Dimensions: 2160 x 2160 • Supports Transparency: True • Bit Depth: 8 bit |
| Sequence Assets | <ul style="list-style-type: none"> • File Type: TGA • Recommended Dimensions for Sequences: 256 x 256 • Maximum Dimensions for Sequences: 512 x 512 • Supports Transparency: True • Bit Depth: 8 bit |

Arrow Textures

The table below lists the specifications for each Arrow option, all of which share the same example image shown below.

⚠ Important: When importing arrow assets in the Asset Manager, ensure that the Arrow Body has a corresponding head asset (Head, T Head, or Dashed Head) with the exact same name. PIERO supports only one texture selection and searches for all related parts by matching name. A mismatch will result in an error and system exception when the application is launched.



Shared Example Image for All Arrow Textures

| Arrow Option: | Specifications: |
|---------------|---|
| Body Asset | <ul style="list-style-type: none">• File Type: PNG• Recommended Dimensions: 632 x 68• Maximum Dimensions: 1600 x 68• Supports Transparency: True• Bit Depth: 8 bit |
| Head Asset | <ul style="list-style-type: none">• File Type: PNG• Recommended Dimensions: 168 x 168• Maximum Dimensions: 168 x 168• Supports Transparency: True• Bit Depth: 8 bit |



| Arrow Option: | Specifications: |
|--------------------|---|
| T Head Assets | <ul style="list-style-type: none"> • File Type: PNG • Recommended Dimensions: 44 x 68 • Maximum Dimensions: 44 x 68 • Supports Transparency: True • Bit Depth: 8 bit |
| Dashed Head Assets | <ul style="list-style-type: none"> • File Type: PNG • Recommended Dimensions: 168 x 168 • Maximum Dimensions: 168 x 168 • Supports Transparency: True • Bit Depth: 8 bit |
| Sequence Assets | <ul style="list-style-type: none"> • File Type: TGA • Recommended Dimensions for Sequences: 256 x 128 • Maximum Dimensions for Sequences: 512 x 256 • Supports Transparency: True • Bit Depth: 8 bit |

Caption

The table below lists the specifications for each Caption option, all of which share the same example image shown below.



Shared Example Image for All Caption Options

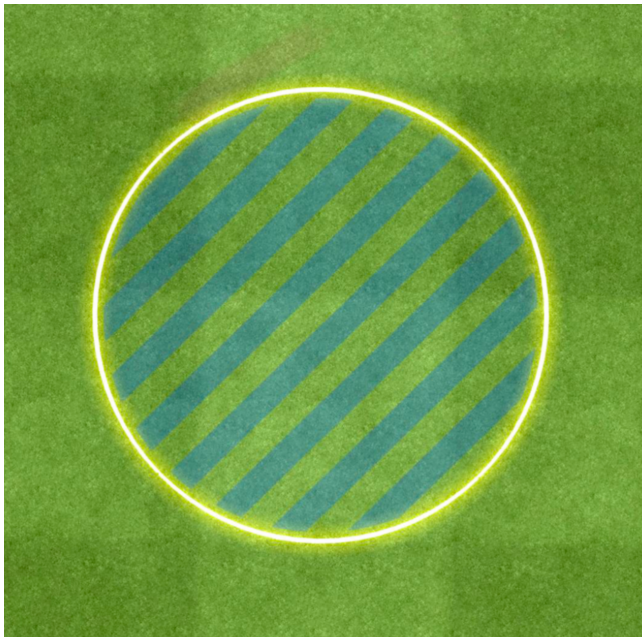
| Caption Option: | Specifications: |
|--------------------|---|
| Single Assets | <ul style="list-style-type: none">• File Type: PNG, JPG• Recommended Dimensions: 156 x 140• Maximum Dimensions: 312 x 280• Supports Transparency: True (PNG), False (JPG)• Bit Depth: 8 bit |
| Anchor Body Assets | <ul style="list-style-type: none">• File Type: PNG• Recommended Dimensions: 632 x 68• Maximum Dimensions: 1600 x 68• Supports Transparency: True• Bit Depth: 8 bit |



| Caption Option: | Specifications: |
|---------------------------|---|
| Anchor Head Assets | <ul style="list-style-type: none"> • File Type: PNG • Recommended Dimensions: 168 x 168 • Maximum Dimensions: 168 x 168 • Supports Transparency: True • Bit Depth: 8 bit |
| Anchor T Head Assets | <ul style="list-style-type: none"> • File Type: PNG • Recommended Dimensions: 44 x 68 • Maximum Dimensions: 44 x 68 • Supports Transparency: True • Bit Depth: 8 bit |
| Anchor Dashed Head Assets | <ul style="list-style-type: none"> • File Type: PNG • Recommended Dimensions: 168 x 168 • Maximum Dimensions: 168 x 168 • Supports Transparency: True • Bit Depth: 8 bit |
| Anchor Sequence Assets | <ul style="list-style-type: none"> • File Type: TGA • Recommended Dimensions for Sequences: 256 x 128 • Maximum Dimensions for Sequences: 512 x 256 • Supports Transparency: True • Bit Depth: 8 bit |

Circle Textures

The table below lists the specifications for each Circle option, all of which share the same example image shown below.



Shared Example Image for All Circle Options

| Circle Options: | Specifications: |
|-----------------|---|
| Single Assets | <ul style="list-style-type: none">• File Type: PNG• Recommended Dimensions: 854 x 854• Maximum Dimensions: 1000 x 1000• Supports Transparency: True• Bit Depth: 8 bit |
| Border Assets | <ul style="list-style-type: none">• File Type: PNG, TGA, JPG• Recommended Dimensions: 1080 x 1080• Maximum Dimensions: 2160 x 2160• Supports Transparency: True (PNG, TGA), False (JPG)• Bit Depth: 8 bit |



| Circle Options: | Specifications: |
|-----------------|---|
| Chalk Assets | <ul style="list-style-type: none"> • File Type: PNG • Recommended Dimensions: 128 x Any custom width under 512 px • Maximum Dimensions: 512 x 512 • Supports Transparency: True • Bit Depth: 8 bit <p>★ Images should be white, so they can be recolored in PIERO.</p> |
| Wall Assets | <ul style="list-style-type: none"> • File Type: PNG • Recommended Dimensions: 1080 x 1080 • Maximum Dimensions: 2160 x 2160 • Supports Transparency: True • Bit Depth: 8 bit |
| Sequence Assets | <ul style="list-style-type: none"> • File Type: TGA • Recommended Dimensions for Sequences: 256 x 256 • Maximum Dimensions for Sequences: 512 x 512 • Supports Transparency: True • Bit Depth: 8 bit |

Colour Palette

The specifications for the Colour Palette are outlined in the table below.

| Values: | | | | | | Specifications: | |
|---------|---------------------|-----|-----|-----|-----|-----------------|--|
| | A | B | C | D | E | | |
| 1 | White | 250 | 250 | 250 | 255 | | |
| 2 | Grey | 153 | 153 | 153 | 255 | | |
| 3 | Black | 25 | 25 | 25 | 255 | | |
| 4 | Red | 204 | 26 | 26 | 255 | | |
| 5 | Bordeaux | 105 | 29 | 18 | 255 | | |
| 6 | Burgundy | 206 | 0 | 97 | 255 | | |
| 7 | Violet | 92 | 54 | 151 | 255 | | |
| 8 | Purple | 178 | 26 | 244 | 255 | | |
| 9 | Green | 26 | 166 | 26 | 255 | | |
| 10 | Blue (light) | 0 | 153 | 255 | 255 | | |
| 11 | Blue | 0 | 56 | 255 | 255 | | |
| 12 | Yellow (light) | 245 | 245 | 102 | 255 | | |
| 13 | Yellow | 254 | 193 | 13 | 255 | | |
| 14 | Orange | 255 | 128 | 0 | 255 | | |
| 15 | Brown | 74 | 50 | 20 | 255 | | |
| 16 | Semi Transp Ref | 198 | 168 | 118 | 150 | | |
| 17 | Argentina Blue | 117 | 178 | 249 | 255 | | |
| 18 | Argentina Dark Blue | 22 | 30 | 114 | 255 | | |
| 19 | Argentina Purple | 86 | 78 | 192 | 255 | | |
| 20 | Australia Gold | 245 | 188 | 65 | 255 | | |
| 21 | Australia Green | 73 | 184 | 158 | 255 | | |
| 22 | Belgium Cyan | 226 | 249 | 247 | 255 | | |
| 23 | Belgium Red | 231 | 49 | 35 | 255 | | |
| 24 | Belgium Yellow | 249 | 213 | 72 | 255 | | |

- File Type: CSV
- Colour Palettes are CSV files which define a list of colours by RGBA values (values are from 0 to 255).
- Each line should start with a colour name followed by Red, Green, Blue, then Alpha (transparency) values.
- It is possible to alter their values but not their name.
- Add as many colours as you need per palette.

★ **Important:** The colours White, Red, Black, Blue (light), Blue, Grey, Orange, Yellow (light), Yellow, and Green must be present for PIERO effects to work.

Counter

The table below lists the specifications for each Counter option, all of which share the same example image shown below.



Shared Example Image for All Counter Options

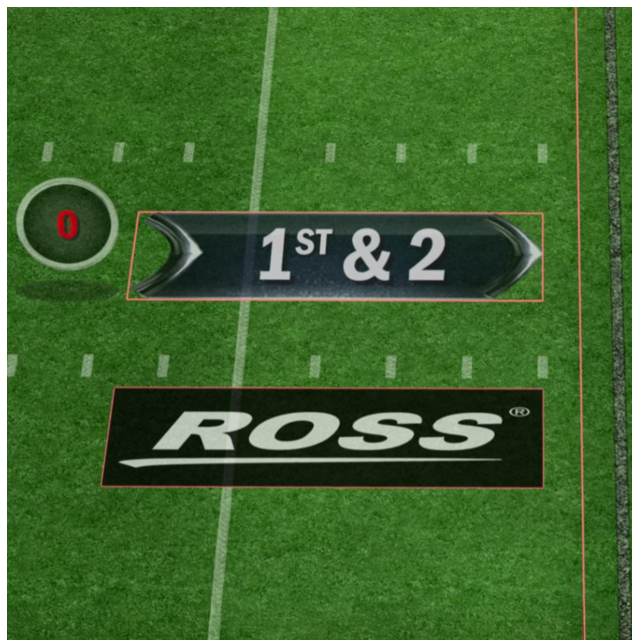
| Counter Options: | Specifications: |
|------------------|--|
| Single Assets | <ul style="list-style-type: none">• File Type: PNG, TGA• Recommended Dimensions: 256 x 256• Maximum Dimensions: 512 x 512• Supports Transparency: True• Bit Depth: 8 bit |
| X Single Asset | <ul style="list-style-type: none">• File Type: PNG• Recommended Dimensions: 256 x 256• Maximum Dimensions: 512 x 512• Supports Transparency: True• Bit Depth: 8 bit |



| Counter Options: | Specifications: |
|---------------------------|--|
| Sequence Assets | <ul style="list-style-type: none"> • File Type: TGA, PNG • Recommended Dimensions for Sequences: 256 x 256 • Maximum Dimensions for Sequences: 512 x 512 • Supports Transparency: True • Bit Depth: 8 bit |
| Background Single Asset | <ul style="list-style-type: none"> • File Type: PNG, TGA • Recommended Dimensions: 256 x 256 • Maximum Dimensions: 512 x 512 • Supports Transparency: True • Bit Depth: 8 bit |
| Background Sequence Asset | <ul style="list-style-type: none"> • File Type: TGA, PNG • Recommended Dimensions for Sequences: 256 x 256 • Maximum Dimensions for Sequences: 512 x 512 • Supports Transparency: True • Bit Depth: 8 bit |
| Wings Single Asset | <ul style="list-style-type: none"> • File Type: PNG • Recommended Dimensions: 512 x 512 • Maximum Dimensions: 512 x 256 • Supports Transparency: True • Bit Depth: 8 bit |

Down and Distance

The table below lists the specifications for each Down & Distance option, all of which share the same example image shown below.



Shared Example Image for All Down & Distance Options

| Down & Distance Options: | Specifications: |
|--------------------------|---|
| Advert Assets | <ul style="list-style-type: none">• File Type: PNG, TGA• Recommended Dimensions: 1024 x 512• Maximum Dimensions: 2048 x 1024• Supports Transparency: True• Bit Depth: 8 bit |
| Advert Sequence Assets | <ul style="list-style-type: none">• File Type: TGA• Recommended Dimensions for Sequences: 256 x 256• Maximum Dimensions for Sequences: 512 x 512• Supports Transparency: True• Bit Depth: 8 bit |

| Down & Distance Options: | Specifications: |
|--------------------------|--|
| Feather Assets | <ul style="list-style-type: none"> • File Type: PNG, TGA • Recommended Dimensions: 512 x 256 • Maximum Dimensions: 512 x 256 • Supports Transparency: True • Bit Depth: 8 bit |
| Feather Sequence Assets | <ul style="list-style-type: none"> • File Type: TGA • Recommended Dimensions for Sequences: 512 x 512 • Maximum Dimensions for Sequences: 512 x 512 • Supports Transparency: True • Bit Depth: 8 bit |
| Timer Background Assets | <ul style="list-style-type: none"> • File Type: PNG, TGA • Recommended Dimensions: 512 x 512 • Maximum Dimensions: 512 x 512 • Supports Transparency: True • Bit Depth: 8 bit |
| Line Assets | <ul style="list-style-type: none"> • File Type: PNG • Recommended Dimensions: 1080 x 1080 • Maximum Dimensions: 2160 x 2160 • Supports Transparency: True • Bit Depth: 8 bit • File Type: TGA • Recommended Dimensions: 512 x 512 • Maximum Dimensions: 512 x 512 • Supports Transparency: True • Bit Depth: 8 bit |
| Chalk Line Assets | <ul style="list-style-type: none"> • File Type: PNG • Recommended Dimensions: 128 x any custom width under 512 px • Maximum Dimensions: 512 x 512 • Supports Transparency: True • Bit Depth: 8 bit ★ Images should be white, so they can be recolored in PIERO. |
| Area assets | <ul style="list-style-type: none"> • File Type: PNG |



| Down & Distance Options: | Specifications: |
|--------------------------|---|
| | <ul style="list-style-type: none"> • Recommended Dimensions: 1080 x 1080 • Maximum Dimensions: 2160 x 2160 • Supports Transparency: True • Bit Depth: 8 bit |
| Area Sequence Assets | <ul style="list-style-type: none"> • File Type: TGA • Recommended Dimensions for Sequences: 256 x 256 • Maximum Dimensions for Sequences: 512 x 512 • Supports Transparency: True • Bit Depth: 8 bit |

End Zone

The table below lists the specifications for each End Zone option, all of which share the same example image shown below.

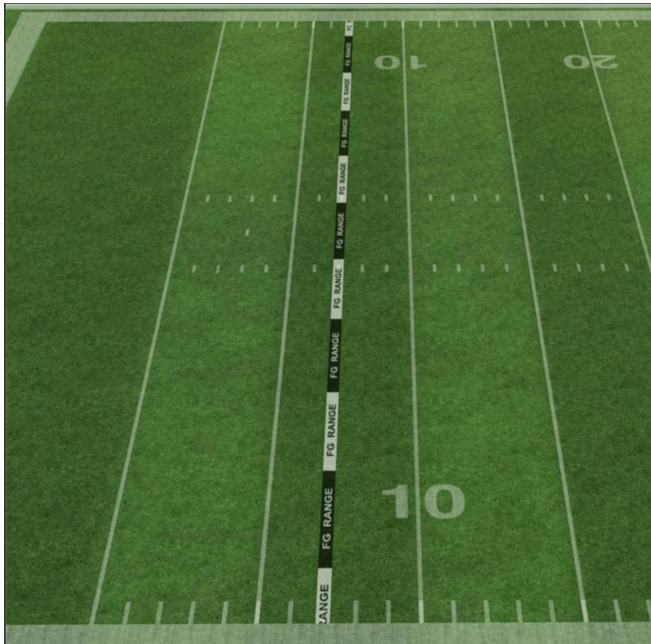


Shared Example Image for All End Zone Options

| End Zone Options: | Specifications |
|-------------------|---|
| Single Assets | <ul style="list-style-type: none">• File Type: PNG• Recommended Dimensions: 1024 x 200• Maximum Dimensions: 2048 x 400• Supports Transparency: True• Bit Depth: 8 bit |
| Sequence Assets | <ul style="list-style-type: none">• File Type: TGA• Recommended Dimensions for Sequences: 256 x 256• Maximum Dimensions for Sequences: 512 x 512• Supports Transparency: True• Bit Depth: 8 bit |

Field Goal Line

The table below lists the specifications for the Field Goal Line asset.



Example Image - Field Goal Line

| Field Goal Line Asset: | Specifications |
|------------------------|---|
| Single Assets | <ul style="list-style-type: none">• File Type: PNG• Recommended Dimensions: 1080 x 1080• Maximum Dimensions: 2160 x 2160• Supports Transparency: True• Bit Depth: 8 bit |



Font

The specifications for the Font Asset are outlined in the table below.



Example - Font Asset

| Font Asset: | Specifications: |
|-------------|---|
| Fonts | File Type: TTF Fonts Supported: Accents, Arabic, Japanese, and Chinese |

Laser Eye Texture

The table below lists the specifications for each Laser Eye option, all of which share the same example image shown below.

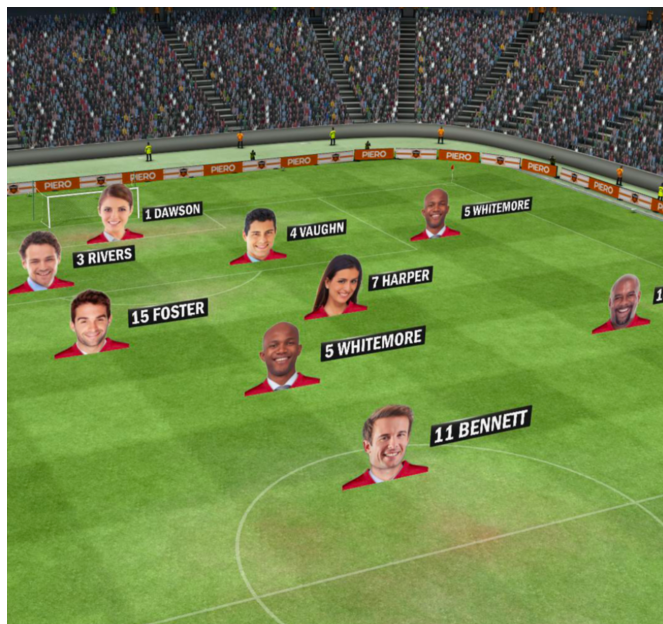


Shared Example Image for All Laser Eye Options

| Laser Eye Options: | Specifications |
|--------------------|---|
| Single Assets | <ul style="list-style-type: none">• File Type: PNG• Recommended Dimensions: 1218 x 452• Maximum Dimensions: 1218 x 452• Supports Transparency: True• Bit Depth: 8 bit• The Laser Eye is a fixed texture size.• For PNGs, square or wide image ratios may be used.• PIERO will distort the image as needed. |
| Sequence Assets | <ul style="list-style-type: none">• File Type: TGA• Recommended Dimensions for Sequences: 256 x 256• Maximum Dimensions for Sequences: 512 x 512• Supports Transparency: True• Bit Depth: 8 bit |

Line-up Cards

The specifications for the Line-up Cards asset are outlined in the table below.



Example - Line-up Asset

| Line-up Cards Asset: | Specifications: |
|----------------------|--|
| Single Asset | File Type: PNG Fixed Dimensions: 292 x 766 Supports Transparency: True Bit Depth: 8 bit |

Logos

The specifications for the Logos asset are outlined in the table below.

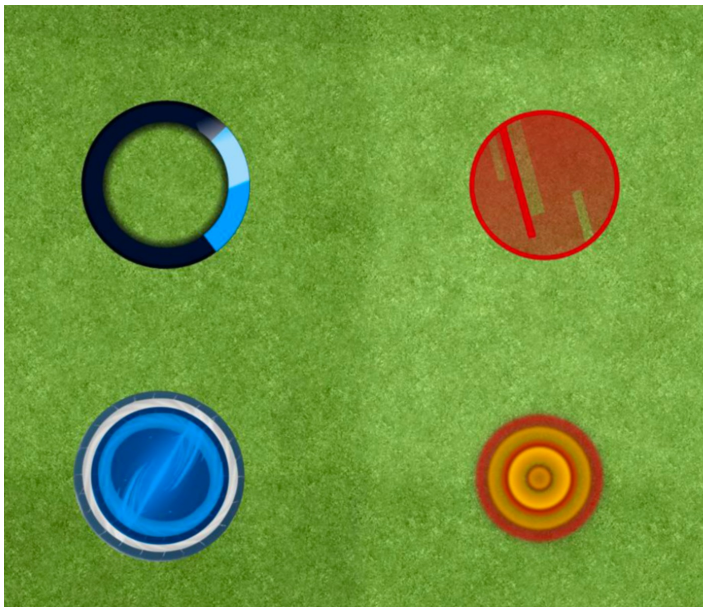


Example - Logo Asset

| Logo Asset: | Specifications: |
|--------------|--|
| Single Asset | <ul style="list-style-type: none">• File Type: PNG, TGA• Recommended Dimensions: 1080 x 1080• Maximum Dimensions: 2160 x 2160• Supports Transparency: True• Bit Depth: 8 bit <ul style="list-style-type: none">• File Type: JPG• Recommended Dimensions: 1080 x 1080• Maximum Dimensions: 2160 x 2160• Supports Transparency: False• Bit Depth: 8 bit |

Magnifier

The table below lists the specifications for each Markers option, all of which share the same example image shown below.

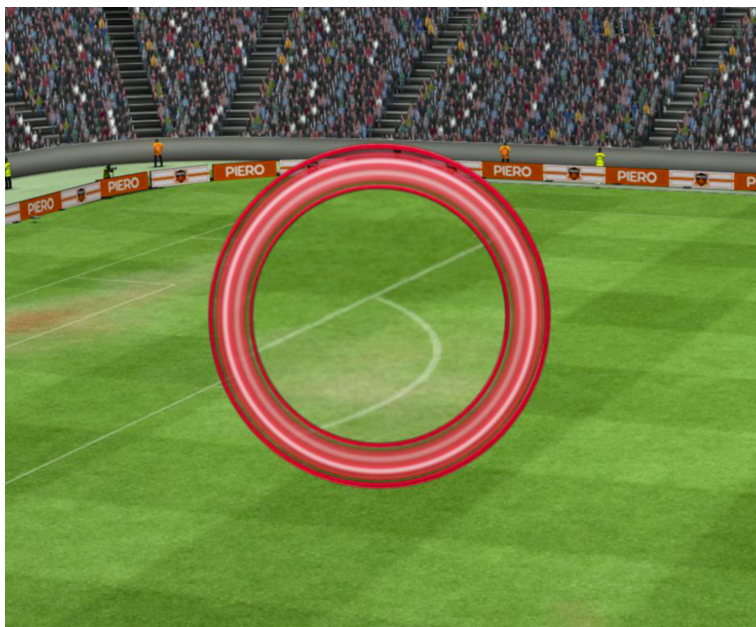


Shared Example Image for All Markers Options

| Markers Options: | Specifications |
|------------------|--|
| Single Assets | <ul style="list-style-type: none"> • File Type: PNG, TGA • Recommended Dimensions: 256 x 256 • Maximum Dimensions: 512 x 512 • Supports Transparency: True • Bit Depth: 8 bit |
| X Single Assets | <ul style="list-style-type: none"> • File Type: PNG • Recommended Dimensions: 256 x 256 • Maximum Dimensions: 512 x 512 • Supports Transparency: True • Bit Depth: 8 bit |
| Sequence Assets | <ul style="list-style-type: none"> • File Type: TGA, PNG • Recommended Dimensions for Sequences: 256 x 256 • Maximum Dimensions for Sequences: 512 x 512 • Supports Transparency: True • Bit Depth: 8 bit |

Markers

The table below lists the specifications for each Magnifier option, all of which share the same example image shown below.

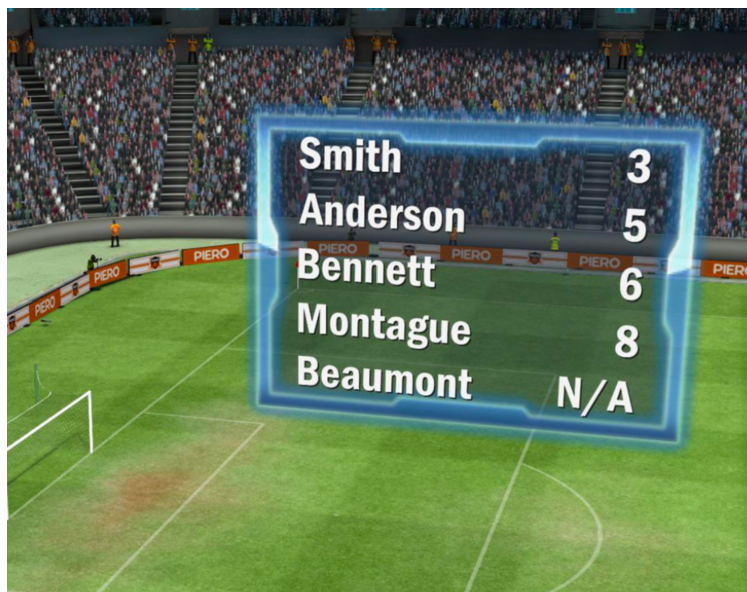


Shared Example Image for All Magnifier Options

| Magnifier Options: | Specifications |
|--------------------|---|
| Circle Sequences | <ul style="list-style-type: none">• File Type: TGA• Recommended Dimensions for Sequences: 256 x 256• Maximum Dimensions for Sequences: 512 x 512• Supports Transparency: True• Bit Depth: 8 bit |
| Square Sequences | <ul style="list-style-type: none">• File Type: TGA• Recommended Dimensions for Sequences: 256 x 256• Maximum Dimensions for Sequences: 512 x 512• Supports Transparency: True• Bit Depth: 8 bit |

Measurement Table

The table below lists the specifications for the Measurement Table.



Example Image - Measurement Table

| Magnifier Options: | Specifications |
|--------------------|--|
| Single Assets | <ul style="list-style-type: none">• File Type: PNG, TGA• Recommended Dimensions: 256 x 256• Maximum Dimensions: 512 x 512• Supports Transparency: True• Bit Depth: 8 bit |

Movies

The table below lists the specifications for the Movies asset option.



Example Image - Movies Asset

| Movies Option: | Specifications |
|----------------|---|
| Movies Assets | <ul style="list-style-type: none">• File Type: TGA• Recommended Dimensions for Sequences: 256 x 256• Maximum Dimensions for Sequences: 512 x 512• Supports Transparency: True• Bit Depth: 8 bit |

Red Zone

The table below lists the specifications for the Red Zone asset option.



Example Image - Red Zone

| Red Zone Option: | Specifications |
|------------------|--|
| Single Asset | <ul style="list-style-type: none">• File Type: PNG, TGA• Recommended Dimensions: 2048 x 1160• Maximum Dimensions: 3000 x 1698• Supports Transparency: True• Bit Depth: 8 bit <ul style="list-style-type: none">• File Type: JPG• Recommended Dimensions: 2048 x 1160• Maximum Dimensions: 3000 x 1698• Supports Transparency: False• Bit Depth: 8 bit |

Safe Area

The table below lists the specifications for the Safe Area asset option.



Example Image - Safe Area

| Safe Area Option: | Specifications |
|-------------------|---|
| Single Asset | <ul style="list-style-type: none">• File Type: PNG• Recommended Dimensions: 1920 x 1080• Maximum Dimensions: 1920 x 1080• Supports Transparency: True• Bit Depth: 8 bit <p>★ The texture is toggled on an off by the operator at runtime. It is displayed in 2D full screen over the incoming video. It is encouraged to mark areas reserved for the clock, dog, and lower thirds to help the PIERO operator.</p> |

Spotlight Base

The table below lists the specifications for the Spotlight asset option.

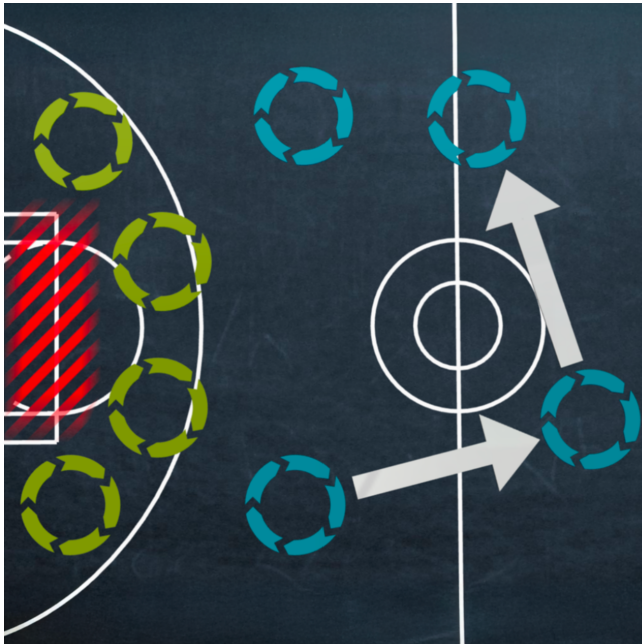


Example Image - Spotlight

| Spotlight Option: | Specifications |
|----------------------|---|
| Spotlight Base Asset | <ul style="list-style-type: none">• File Type: PNG• Recommended Dimensions: 256 x 256• Maximum Dimensions: 512 x 512• Supports Transparency: True• Bit Depth: 8 bit |

Tactical Board

The table below lists the specifications for the Tactical Board asset option.



Example Image - Tactical Board Asset

| Tactical Board Option: | Specifications |
|------------------------|---|
| Single Asset | <ul style="list-style-type: none">• File Type: PNG• Recommended Dimensions: 2266 x 1511• Maximum Dimensions: 2266 x 1511• Supports Transparency: True• Bit Depth: 8 bit <ul style="list-style-type: none">• File Type: JPG• Recommended Dimensions: 2266 x 1511• Maximum Dimensions: 2266 x 1511• Supports Transparency: False• Bit Depth: 8 bit |

Text

The table below lists the specifications for each Text option, all of which share the same example image shown below.



Shared Example Image for All Text Options

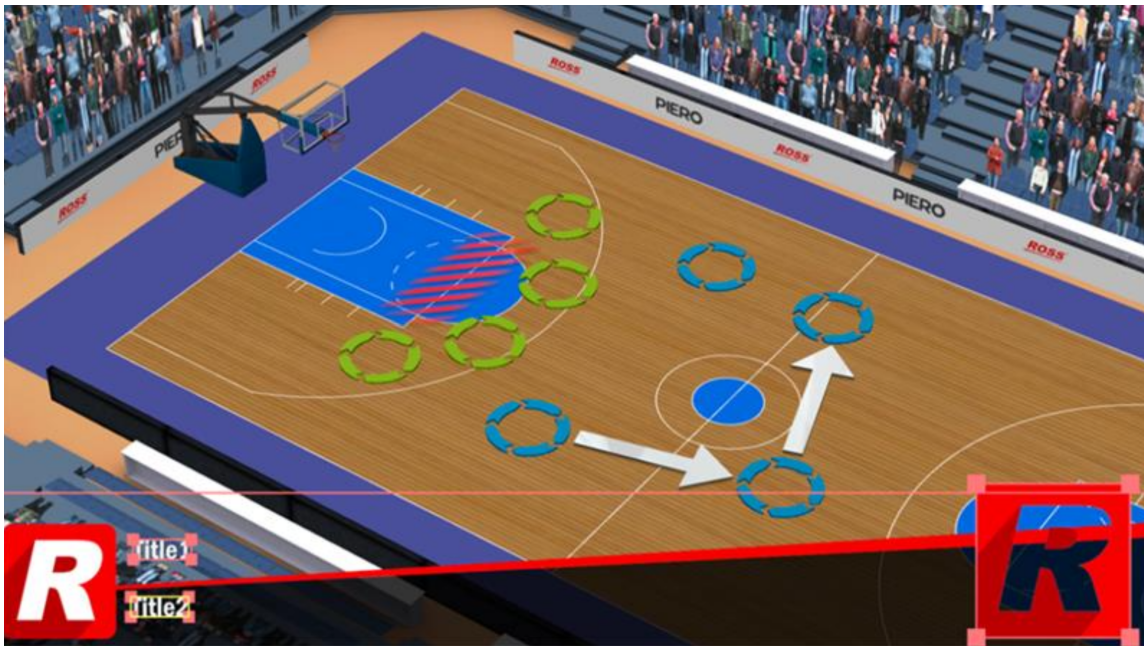
| Text Options: | Specifications: |
|---------------------------|---|
| Background Single Asset | <ul style="list-style-type: none"> • File Type: PNG, TGA • Recommended Dimensions: 256 x 256 • Maximum Dimensions: 512 x 512 • Supports Transparency: True • Bit Depth: 8 bit |
| Background Sequence Asset | <ul style="list-style-type: none"> • File Type: TGA • Recommended Dimensions for Sequences: 256 x 256 • Maximum Dimensions for Sequences: 512 x 512 • Supports Transparency: True • Bit Depth: 8 bit |
| Wings Single Assets | <ul style="list-style-type: none"> • File Type: PNG • Recommended Dimensions: 512 x 512 • Maximum Dimensions: 512 x 256 • Supports Transparency: True • Bit Depth: 8 bit |



| Text Options: | Specifications: |
|----------------------------------|---|
| Coloured Background Single Asset | <ul style="list-style-type: none"> • File Type: PNG • Recommended Dimensions: 256 x 256 • Maximum Dimensions: 512 x 512 • Supports Transparency: True • Bit Depth: 8 bit • These images must be grayscale |

Title Text

The table below lists the specifications for the Title Text asset option.

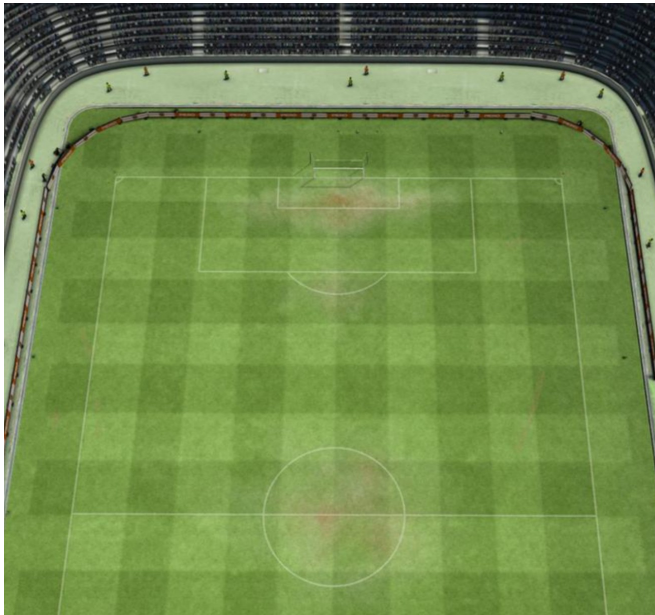


Example Image - Title Text Asset

| Title Text Option: | Specifications |
|--------------------|---|
| Single Asset | <ul style="list-style-type: none">• File Type: PNG• Recommended Dimensions: 1920 x 256• Maximum Dimensions: 1920 x 512• Supports Transparency: True• Bit Depth: 8 bit <ul style="list-style-type: none">• File Type: JPG• Recommended Dimensions: 1920 x 256• Maximum Dimensions: 1920 x 512• Supports Transparency: False• Bit Depth: 8 bit |

Virtual Stadium

The table below lists the specifications for the Virtual Stadium asset options.



Example Image - Virtual Stadium Asset (All)

| Virtual Stadium Option: | Specifications |
|-------------------------|--|
| Stadium Adverts | <ul style="list-style-type: none">• File Type: PNG• Recommended Dimensions: 1080 x 1080• Maximum Dimensions: 2160 x 2160• Supports Transparency: False• Bit Depth: 8 bit <p>Adverts must come in pairs and be named as follows:</p> <ul style="list-style-type: none">➢ They must be stored in a folder with nothing else.➢ The name of the folder will appear on the user interface to select the adverts - example Folder "Ross Video" containing advert1.png and advert2.png.➢ The first file of the pair must be named: advert1.png.➢ The second file of the pair must be named: advert2.png. |



| Virtual Stadium Option: | Specifications |
|-------------------------|--|
| Pitch Logos | <ul style="list-style-type: none"> • File Type: PNG • Recommended Dimensions: 1080 x 1080 • Maximum Dimensions: 2160 x 2160 • Supports Transparency: True • Bit Depth: 8 bit • The PNG textures MUST match the stadium dimension aspect ratio. <p>★ The pitch lines are provided for guidance only and should not be part of the textures.</p> |

Note: While the resolution can vary within the specified range, the aspect ratio must match the intended placement on the pitch or stadium. This can vary depending on how and where the asset is used. If unsure, please contact Technical Support as behavior may differ across setups.