

Creating a New Caprica VM in Hyper-V

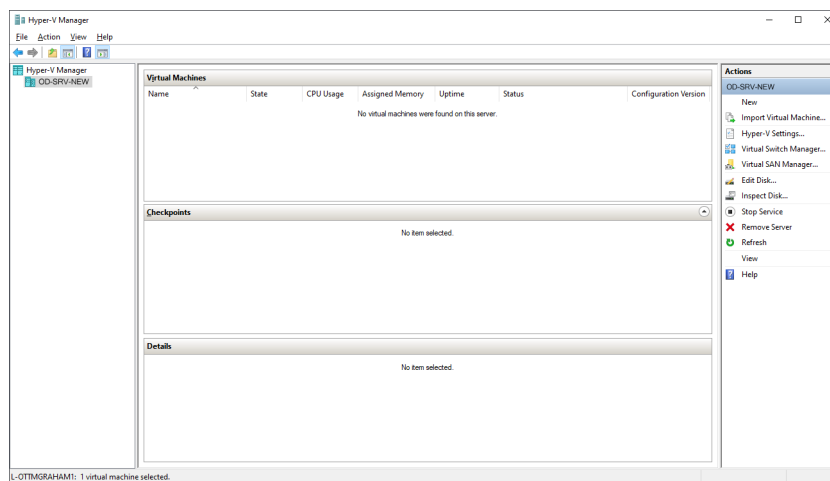
The Caprica Server in an OverDrive system runs as a virtual machine on the OverDrive Server computer. When commissioning a new OverDrive Server computer, you must create a virtual machine in Hyper-V for the Caprica Server.

Create a New Caprica VM

The Hyper-V New Virtual Machine Wizard uses the supplied Hyper-V image file to create a new Caprica VM.

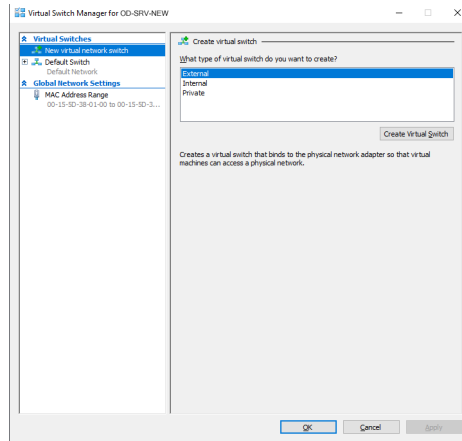
To create a new Caprica VM

1. Log in to the OverDrive Server computer that hosts your Caprica Server in Hyper-V as an administrator.
2. Use the following folder path to open the OverDrive folder that contains the Caprica VM Hyper-V image file:
\\srvirgtest\system archives\OverDrive
3. From the open OverDrive folder, download the HyperVCapricaImage folder to the following folder on the OverDrive Server computer:
C:\archive\
The Hyper-V Manager window opens.

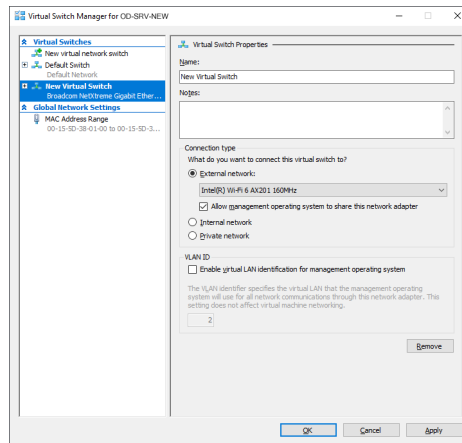


5. In the Actions panel, select Virtual Switch Manager.

The Virtual Switch Manager dialog box opens.

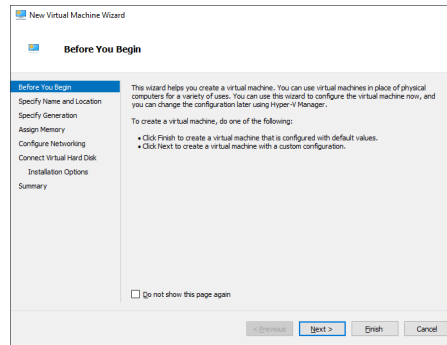


6. In the tree view, select New virtual network switch.
The Create virtual switch panel opens.
7. In the What type of virtual switch do you want to create? section, select External.
8. Click Create Virtual Switch.
The Virtual Switch Properties panel opens for the new virtual switch.

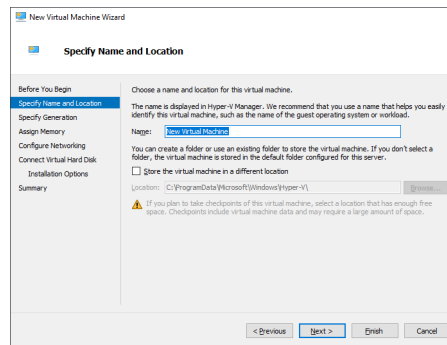


9. In the Name box, enter VMSSwitch.
10. Clear the Allow management operating system to share this network adapter check box.
11. Click OK.
The Apply Networking Changes alert dialog box opens.

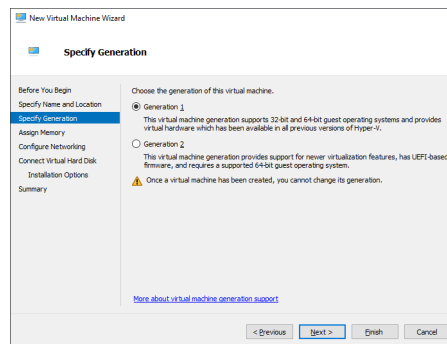
- In the Apply Networking Changes alert, click Yes.
The Apply Networking Changes alert and the Virtual Switch Manager dialog box close.
- In the Actions panel, select New > Virtual Machine.
The New Virtual Machine Wizard opens displaying the Before You Begin screen.



- Click Next.
The Specify Name and Location screen opens.

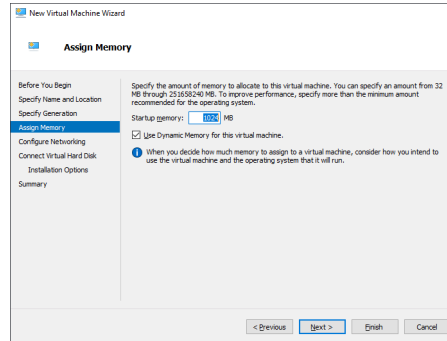


- In the Name box, enter CapricaVM8.
- Click Next.
The Specify Generation screen opens.

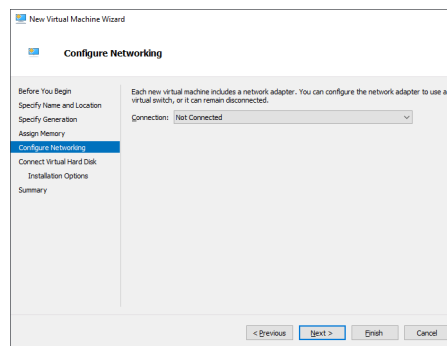


- Select the Generation 1 option.

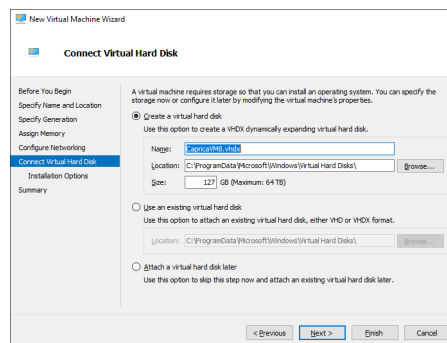
18. Click Next.
The Assign Memory screen opens.



19. In the Startup memory box, enter 8192.
20. Click Next.
The Configure Networking screen opens.

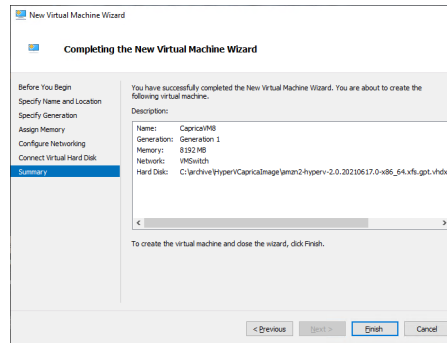


21. Use the Connection list to select VMSwitch.
22. Click Next.
The Connect Virtual Hard Disk screen opens.



23. Select the Use an existing virtual hard disk option.
24. Click Browse to the right of the Location box.
The Open dialog box opens.

25. Navigate to the C:\archive\HyperV\CapricaImage folder.
26. Open the amzn2-hyperv-2.0.20210617.0-x86_64.xfs.gpt.vhdx file.
27. Click Next.
The Completing New Virtual Machine Wizard screen opens.



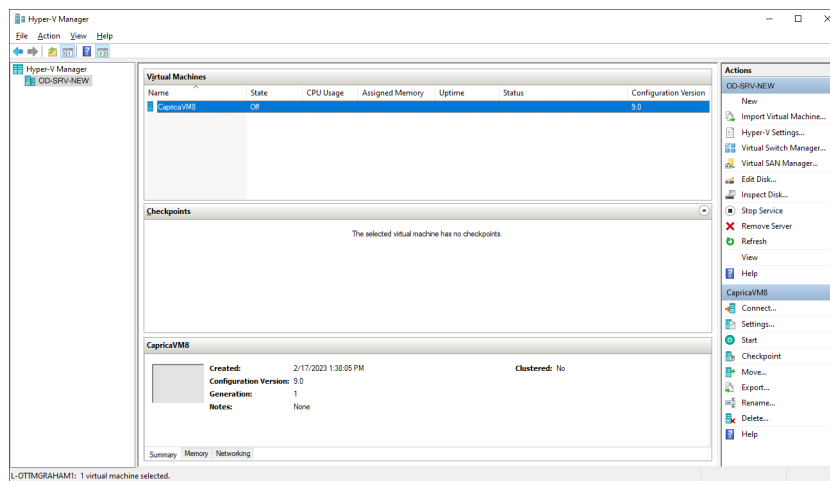
28. Click Finish.
The New Virtual Machine Wizard closes and the Hyper-V Manager displays the new Caprica8VM virtual machine in the Virtual Machines section.

Configure a New Caprica VM

After creating the Caprica VM, you must configure it to work with in your OverDrive system.

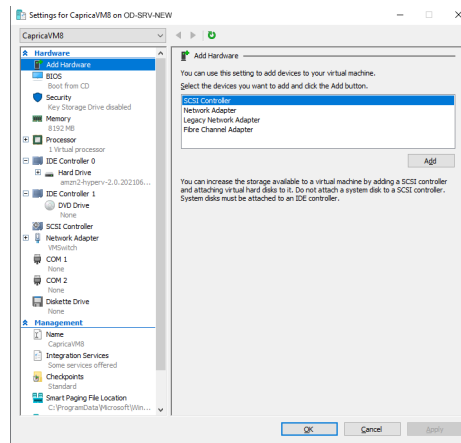
To configure a new Caprica VM

1. In the Virtual Machines section of the Hyper-V Manager, select CapricVM8.

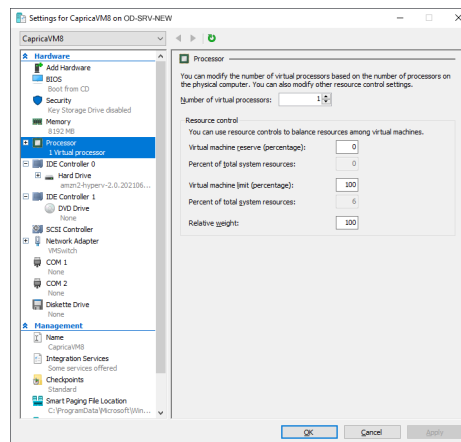


2. In the CapricaVM8 section of the Actions panel, select Settings.

The Settings dialog box opens.

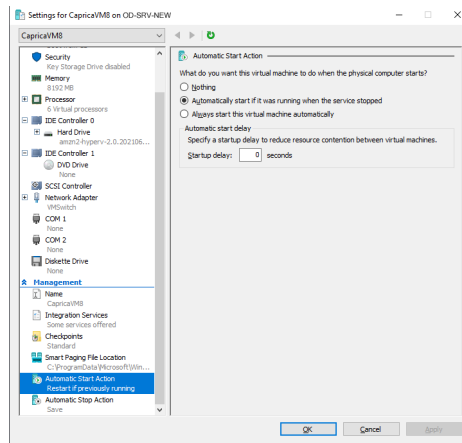


3. In the Hardware section of the tree view, select Processor.
The Processor panel opens.

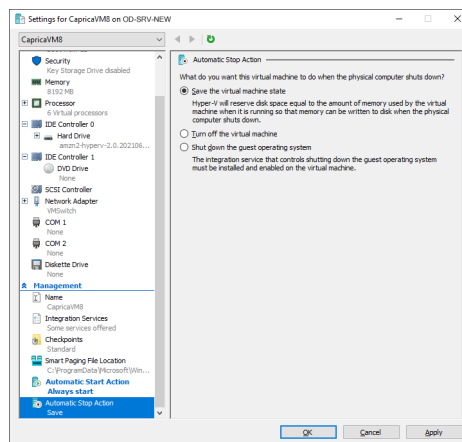


4. In the Number of virtual processors box, enter 6.
5. Click Apply.
6. In the Management section of the tree view, select Automatic Start Action.

The Automatic Start Action panel opens.

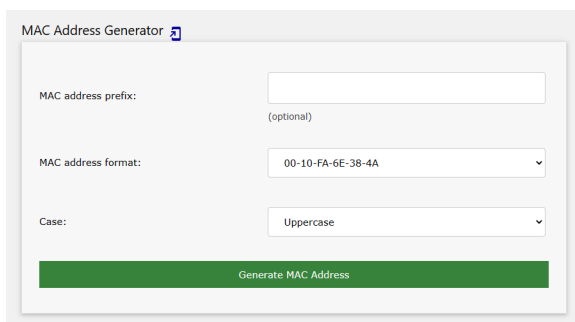


7. Select the **Always start this virtual machine automatically** option.
8. In the Management section of the tree view, click **Automatic Stop Action**.
The Automatic Stop Action panel opens.

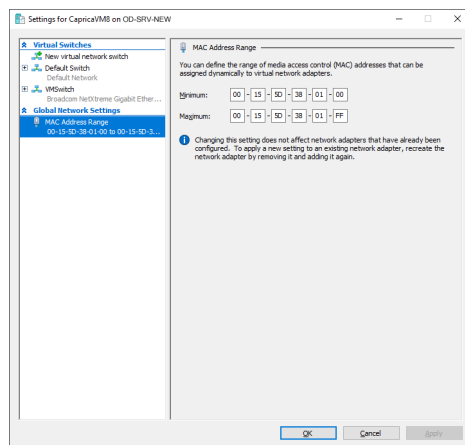


9. Select the **Shutdown the guest operation system** option.
10. Click **OK**.
The Settings dialog box closes and the Hyper-V Manager saves the CapricaVM8 VM configuration.
11. Use the following URL to open the miniwebtool MAC Address Generator web site in a web browser:
<https://miniwebtool.com/mac-address-generator/>

The miniwebtool MAC Address Generator web site opens in a web browser.



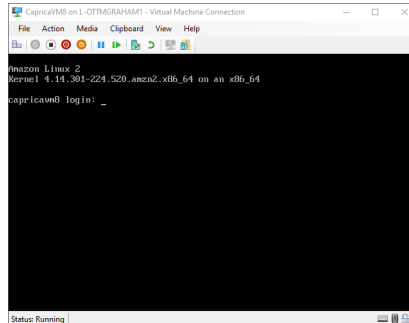
12. In the MAC address prefix box, enter 00 : 15 : 5D.
13. Click Generate MAC Address.
14. Record the MAC address displayed in the Generated MAC Address field.
15. In the Actions panel, click Virtual Switch Manager.
The Virtual Switch Manager dialog box opens.
16. In the tree view, select MAC Address Range.
The MAC Address Range panel opens.



17. In the Minimum boxes, enter the MAC address you recorded in step 14. For example:
00 - 15 - 5D - 25 - 65 - B0
18. In the Maximum boxes, enter the MAC address you recorded in step 14 with the last two letters replaced with FF. For example:
00 - 15 - 5D - 25 - 65 - FF
19. Click **OK**.
The Virtual Switch Manager dialog box closes and the Hyper-V Manager saves the set MAC address range.
20. In the Virtual Machines section of the Hyper-V Manager, right-click CapricaVM8 and use the shortcut menu to select Start.
The CapricaVM8 VM starts.

21. Right-click CapricVM8 and use the shortcut menu to select Connect.

When your CapricaVM8 VM is properly configure, the CapricaVM8 window opens displaying the login prompt.



Contacting Technical Support

Technical Support is staffed by a team of experienced specialists ready to assist you with any question or technical issue.

Ross Video has technical support specialists strategically located around the globe to ensure a prompt response to technical inquiries. Our primary technical support center is located in Ottawa, Ontario, Canada. In addition, we have offices in The United Kingdom (London), Australia (Sydney), and Singapore with satellite locations in New York City, The Netherlands, and China. As we expand our presence globally, we are constantly evaluating other key locations to have a local technical support specialist in order to better service our customers.

North America

Our North America center located in Ottawa, Ontario, Canada and is open Monday to Friday 8:30 a.m. to 6:00 p.m. EST, with 24/7/365 on-call service after hours.

Our telephone number is: +1-613-686-1557

Toll free within North America: +1 844-652-0645

EMEA

Our EMEA center is open Monday to Friday 8:30 a.m. to 5:00 p.m. GMT. After hours support is provided by our North America location.

Our telephone number is: +44 (0)1189502446

International toll free: +800 3540 3545

If the local support specialist is not available, your call will be transferred automatically to our North America center.

Australia

Our Sydney, Australia office is located in Alexandria, NSW.

Our local support telephone number is: 1300 007 677

If the local support specialist is not available, your call will be transferred automatically to our North America center.

Online

E-mail: techsupport@rossvideo.com

Website: open a support request using the link <http://www.rossvideo.com/support/tech-support.html> to open a support request.

Copyright

© 2014 - 2025 Ross Video Limited. Ross®, MLE®, OverDrive®, GlobalView®, RundownControl™, DirectControl™, DirectAudio™, DirectAUXaudio™, DirectCamera™, DirectServer™, QuickTurn™, RapidRestore™, SideShot™, SideSlide™, SideStick™, OverDrive Gateway™, LiveLink™, and any related marks are trademarks or registered trademarks of Ross Video Limited. All other trademarks are the property of their respective companies. PATENTS ISSUED and PENDING. All rights reserved. No part of this publication may be reproduced, stored in a retrieval system, or transmitted in any form or by any means, mechanical, photocopying, recording or otherwise, without the prior written permission of Ross Video. While every precaution has been taken in the preparation of this document, Ross Video assumes no responsibility for errors or omissions. Neither is any liability assumed for damages resulting from the use of the information contained herein.