

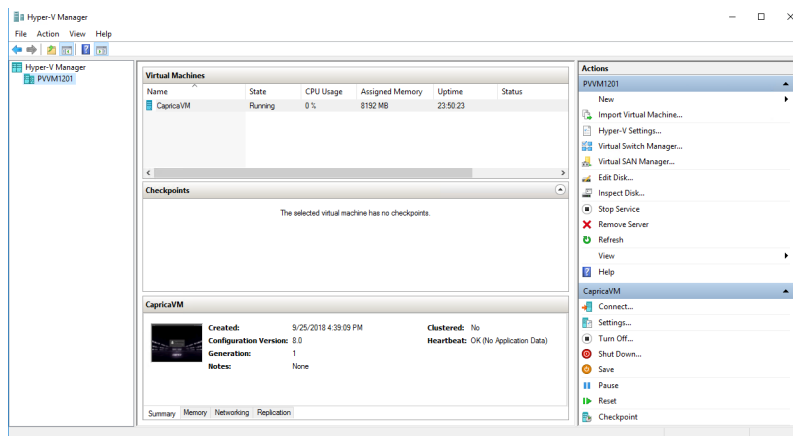
Configuring a 2nd Network Interface for Device Control

When certain devices are on a closed network and not part of the wider broadcast network where OverDrive and Caprica are located, you must configure a 2nd network interface for the CapricaVM hosted on OverDrive Server to control the devices on the closed network.

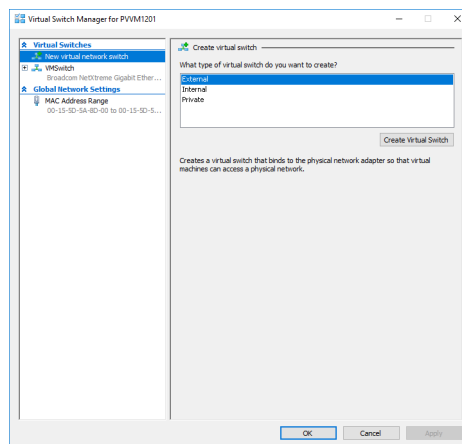
- ★ Only use a 2nd network interface to control devices. Do not use a 2nd network interface to connect to devices configured as a server.

To configure a 2nd network interface for the CapricaVM:

- Use the following credentials to log in to the OverDrive Server computer that hosts your Caprica Server in Hyper-V:
 - User: `overdrive`
 - Password: `<your_password>`
- Use the Start menu to select Hyper-V Manager. The Hyper-V Manager window opens.

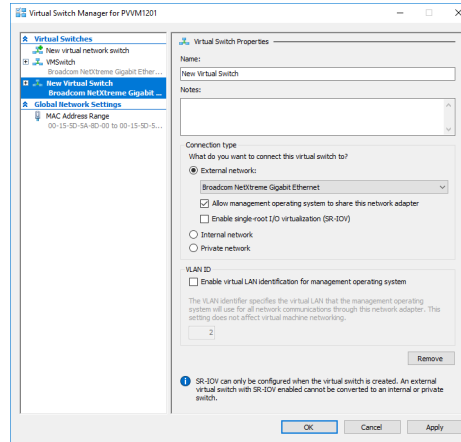


- In the Actions panel, select Virtual Switch Manager. The Virtual Switch Manager dialog box opens.

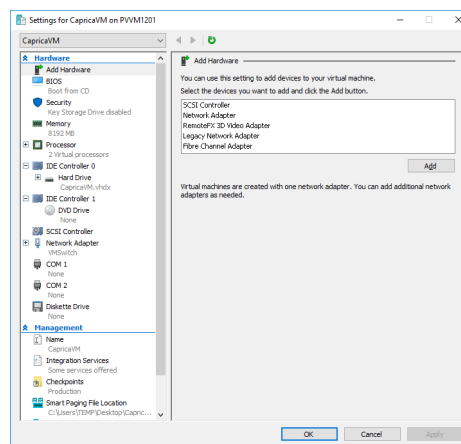


- In the What type of virtual switch do you want to create? section, select External.

- Click Create Virtual Switch.
- The Virtual Switch Properties panel opens for your new virtual switch.

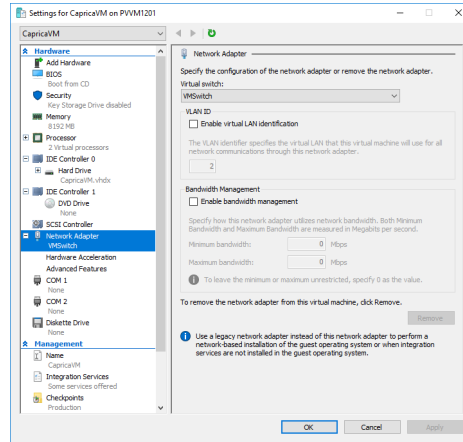


- In the Name box, enter a name for the 2nd network interface. For example: Caprica NIC 2.
 - In the Connection type section, use the External network list to select the physical NIC that connects to the closed network that contains the devices to control from Caprica.
 - Clear the Allow management operating system to share this network adapter check box.
 - Click OK.
- The Apply Networking Changes alert dialog box opens.
- In the Apply Networking Changes alert, click Yes.
- The Apply Networking Changes alert and the Virtual Switch Manager dialog box close.
- In the Caprica VM section of the Hyper-V Manager window Actions panel, select Settings.
- The Settings dialog box opens.
- In the Hardware section of the tree view, click Add Hardware.
- The Add Hardware panel opens.

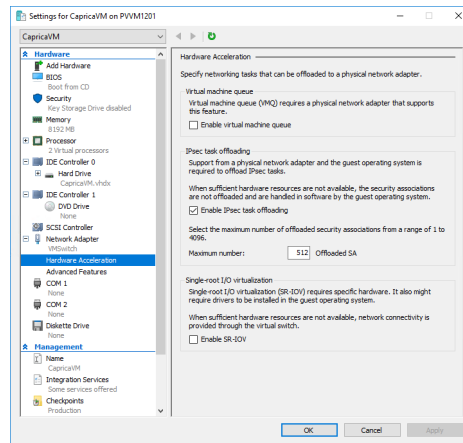


- In the Select the devices you want to add section, select Network Adapter.
- Click Add.

- In the Hardware section of the tree view, expand Network Adapter node. The Network Adapter panel opens.



- Use the Virtual Switch list to select the virtual switch that you created in step 6 on page 4-2.
- Click Apply.
- In the Network Adapter node of the tree view, click Hardware Acceleration. The Hardware Acceleration panel opens.



- In the Virtual machine queue section, clear the Enable virtual machine queue check box.
- Click OK. The Settings dialog box closes.
- In the CapricaVM section of the Hyper-V Manager window Actions panel, click Reset. The CapricaVM restarts to enable the defined 2nd network interface.
- Assign IP addresses as required to the two CapricaVM network interfaces.

Contacting Technical Support

Technical Support is staffed by a team of experienced specialists ready to assist you with any question or technical issue.

Ross Video has technical support specialists strategically located around the globe to ensure a prompt response to technical inquiries. Our primary technical support center is located in Ottawa, Ontario, Canada. In addition, we have offices in The United Kingdom (London), Australia (Sydney), and Singapore with satellite locations in New York City, The Netherlands, and China. As we expand our presence globally, we are constantly evaluating other key locations to have a local technical support specialist in order to better service our customers.

North America

Our North America center located in Ottawa, Ontario, Canada and is open Monday to Friday 8:30 a.m. to 6:00 p.m. EST, with 24/7/365 on-call service after hours.

Our telephone number is: +1-613-686-1557

Toll free within North America: +1 844-652-0645

EMEA

Our EMEA center is open Monday to Friday 8:30 a.m. to 5:00 p.m. GMT. After hours support is provided by our North America location.

Our telephone number is: +44 (0)1189502446

International toll free: +800 3540 3545

If the local support specialist is not available, your call will be transferred automatically to our North America center.

Australia

Our Sydney, Australia office is located in Alexandria, NSW.

Our local support telephone number is: 1300 007 677

If the local support specialist is not available, your call will be transferred automatically to our North America center.

Online

E-mail: techsupport@rossvideo.com

Website: open a support request using the link <http://www.rossvideo.com/support/tech-support.html> to open a support request.

Copyright

© 2014 - 2025 Ross Video Limited. Ross®, MLE®, OverDrive®, GlobalView®, RundownControl™, DirectControl™, DirectAudio™, DirectAUXaudio™, DirectCamera™, DirectServer™, QuickTurn™, RapidRestore™, SideShot™, SideSlide™, SideStick™, OverDrive Gateway™, LiveLink™, and any related marks are trademarks or registered trademarks of Ross Video Limited. All other trademarks are the property of their respective companies. PATENTS ISSUED and PENDING. All rights reserved. No part of this publication may be reproduced, stored in a retrieval system, or transmitted in any form or by any means, mechanical, photocopying, recording or otherwise, without the prior written permission of Ross Video. While every precaution has been taken in the preparation of this document, Ross Video assumes no responsibility for errors or omissions. Neither is any liability assumed for damages resulting from the use of the information contained herein.