

Caprica Server Operating System Upgrade - Static

Upgrading the operating system of your Caprica Server to run Caprica version 8.x involves the following procedures:

- Backup Your Current Caprica Server
- Stop the Current Caprica VM
- Setup a Virtual Switch
- Create the New Caprica VM
- Set the Caprica Account Password
- Set Caprica Server Network Settings
- Switch Back to the External Network
- Reset Automatic Start and Stop
- Restore Caprica Server Configuration

★ Caprica Users should only upgrade the operating system of a Caprica Server under the supervision of Ross Video personnel.

Backup Your Current Caprica Server

Backing the configuration of your current Caprica Server compresses the Installation, Custom Control, Shotbox, and Memory configuration components into a single diskset file.

To backup your current Caprica Server configuration

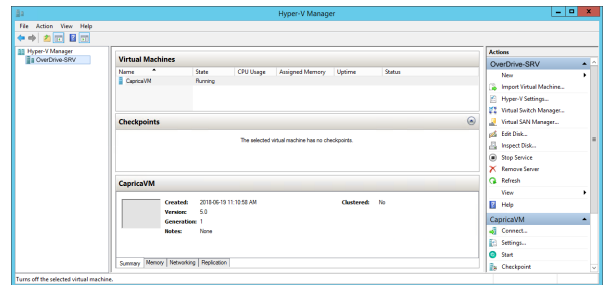
1. Log in to a computer connected to the same network as the Caprica Server computer.
2. Use a web browser to open the Caprica web page URL. The Caprica Login web page opens.
3. Log in to the Caprica web page as the caprica user. The Caprica web page opens.
4. In the tree view, click Diskset. The Diskset web page opens.
5. In the title bar of the Current Configuration section, click Save All As. The Save All As dialog box opens.
6. In the Name box, enter OS8upgrade as the name for your new diskset.
7. Click Save. Caprica creates a new diskset file named OS8upgrade.tzg in the /caprica/archive directory on the Caprica Server computer.
8. Copy the /caprica/archive/OS8upgrade.tzg file to a network location or a USB flash drive.
9. Record the IP address of your Caprica Server and cluster information.
10. Record your Caprica Server License.

Stop the Current Caprica VM

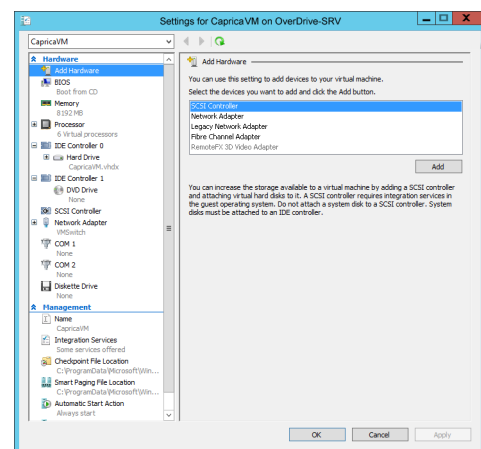
Since your new Caprica virtual machine will use the same IP address as your current Caprica virtual machine you must stop the current Caprica virtual machine in Hyper-V and configure it to not start automatically.

To stop the current Caprica virtual machine

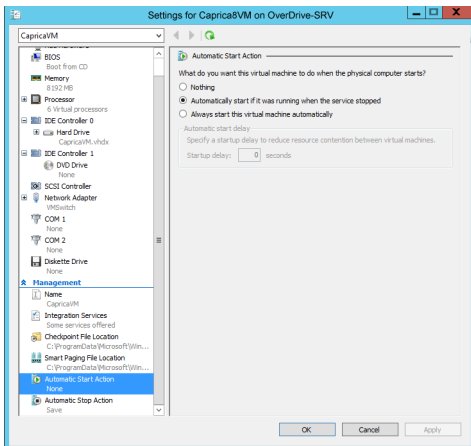
1. Log in to the OverDrive Server computer that hosts your Caprica Server in Hyper-V as the overdrive user.
2. Use the Start menu to select Hyper-V Manager. The Hyper-V Manager window opens.



3. In the Virtual Machines section select the CapricaVM virtual machine.
4. In the CapricaVM section of the Actions panel, click Turn Off. An **Alert** opens.
5. Click **Turn Off** to turn CapricaVM off.
6. In the CapricaVM section of the Actions panel, select Settings. The Settings dialog box opens.



- In the Management section of the tree view, click Automatic Start Action.
The Automatic Start Action panel opens.



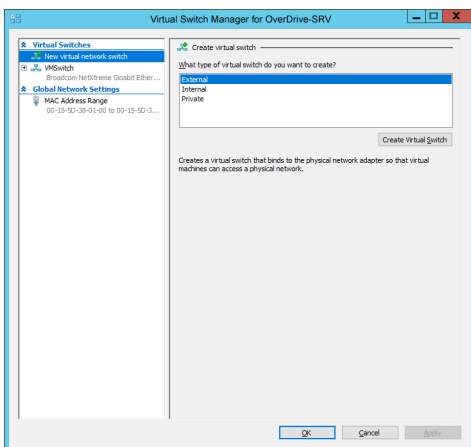
- Select the **Nothing** option to keep CapricaVM turned off.
- Click **OK** to save the selected Hyper-V automatic start option and close the Settings dialog box.

Setup a Virtual Switch

When DHCP and DNS are not available on your corporate network to you must setup a virtual switch before creating the new Caprica8VM virtual machine in Hyper-V to run the Amazon Linux 2 operating system for Caprica Server version 8.x or greater.

To create a virtual switch

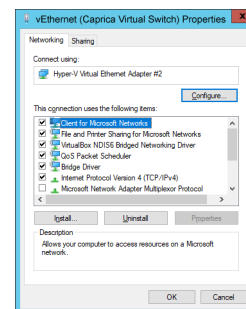
- In the Hyper-V Manager window, use the Action menu to select Virtual Switch Manager.
The Virtual Switch Manager dialog box opens.



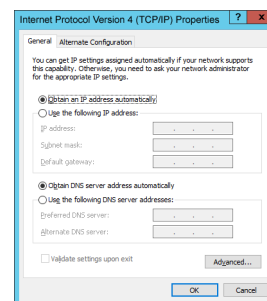
- In the Create virtual switch panel select Internal.
- Click Create Virtual Switch.

The Virtual Switch Properties panel opens.

- In the Name box, enter `Caprica Virtual Switch`.
- Click **OK** to create the Caprica Virtual Switch and close the Virtual Switch Manager dialog box.
- On the OverDrive Server computer that hosts your Caprica Server, open the Control Panel > Network and Sharing Center > Change Adapter Settings.
- In the Network Connections dialog box click the vEthernet (Caprica Virtual Switch) link.
The vEthernet (Caprica Virtual Switch) Status dialog box opens.
- Click Properties.
The vEthernet (Caprica Virtual Switch) Properties dialog box opens.



- In the This connection uses the following items list, select Internet Protocol Version 4 (TCP/IPv4).
- Click Properties.
The Internet Protocol Version 4 (TCP/IPv4) Properties dialog box opens.



- Select the Use the following IP address option.
- In the IP address box, enter `192.168.1.31`.
- In the Subnet mask box, enter `255.255.255.0`.
- Click OK to save the set properties and close the Internet Protocol Version 4 (TCP/IPv4) Properties dialog box.

15. In the vEthernet (Caprica Virtual Switch) Properties dialog box, click Close.
16. In the vEthernet (Caprica Virtual Switch) Status dialog box, click Close.
17. Close the Network and Sharing Center window.

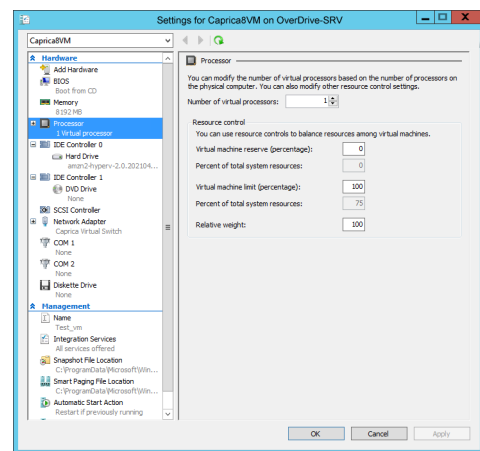
Create the New Caprica VM

A new Caprica8VM virtual machine in Hyper-V will run the Amazon Linux 2 operating system for Caprica Server version 8.x or greater.

To create a new Caprica VM in Hyper-V

1. Download the Caprica8VM Static file from Ross Video Technical Support.
2. Extract the downloaded Caprica8VM Static file.
3. In the Hyper-V Manager window, use the Action menu to select New > Virtual Machine.
The Before You Begin page of the New Virtual Machine wizard opens.
4. Click Next.
The Specify Name and Location page opens.
5. In the Name box enter `Caprica8VM`.
6. Click Next.
The Specify Generation page opens.
7. Select the Generation 1 option.
8. Click Next.
The Assign Memory page opens.
9. In the Startup memory box enter `8192`.
10. Click Next.
The Configure Networking page opens.
11. Use the Connection list to select Caprica Virtual Switch.
12. Click Next.
The Connect Virtual Hard Disk page opens.
13. Select the Use an existing virtual hard disk option.
14. Click Browse to locate and select the Caprica8VM file you downloaded from Ross Video Technical Support and expanded in step 2.
15. Click Next.
The Completing the New Virtual Machine Wizard page opens.

16. Click Finish.
Hyper-V Manager creates a new virtual machine for Caprica Server version 8.0.
17. In the Virtual Machines section select the Caprica8VM virtual machine.
18. In the Caprica8VM section of the Actions panel, select Settings.
The Settings dialog box opens.
19. In the Hardware section of the tree view, click Processor.
The Processor panel opens.



20. In the Number of virtual processors box enter `6`.
21. Click **OK** to save the selected Hyper-V number of virtual processors setting and close the Settings dialog box.
22. In the Caprica8VM section of the Actions panel, select Start.
With your Capric8VM virtual machine up and running you can configure your Caprica Server.

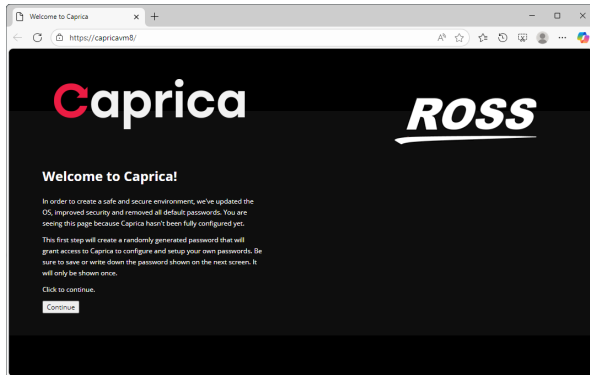
Set the Caprica Account Password

The first time you log in to your new Caprica Server you must set the password for the default caprica account. The caprica account is a super user that can edit all settings and control all processes on a Caprica Server.

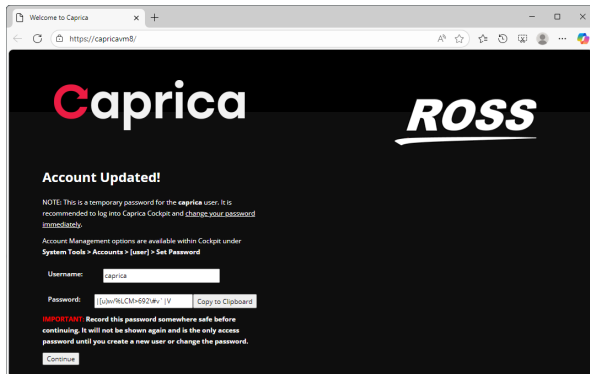
To set the caprica user password on the first log in:

1. Use a web browser to open the Caprica web page URL:
`http://192.168.1.11:80`

If the web browser identifies your connection as not secure, add an exception for the Caprica web page. The Welcome to Caprica! web page opens.

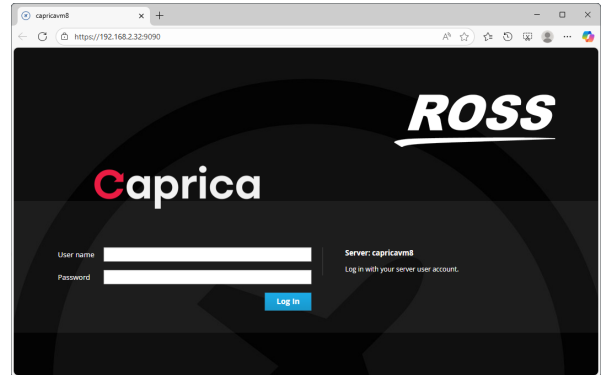


2. Click Continue.
The Account Updated! web page opens.



3. Click Copy to Clipboard.
Caprica copies the password displayed in the Password box to the clipboard so that you can use the password to log in to Caprica on the next web page.
- ★ Record the displayed password before continuing. The password for the caprica user will not be shown again and is the only access password until you change the it for the caprica user or create a new user.

4. Click Continue.
The Caprica Login web page opens.



5. In the User name box, enter `caprica`.
6. In the Password box, paste the password from the clipboard.
7. Click Log In.
The Caprica web page opens.
8. To change the caprica user password, refer to the Change the Caprica User Password section in the Installation Notes chapter of the *Caprica User Guide*.

Set Caprica Server Network Settings

You can set the hostname and IP address of your Caprica8VM virtual machine to the IP address that was used by your previous CapricaVM virtual machine.

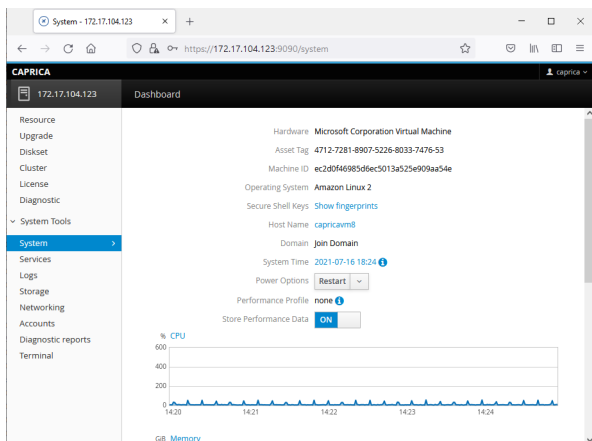
Hostname

Change the hostname of your new Caprica8VM virtual machine to that of the old CapricaVM virtual machine.

To set the hostname for Caprica8VM

1. In the tree view of the Caprica web page, expand the System Tools node.
2. In the System Tools node, click System.

The System web page opens.



- In the Host Name field, click the current host name. The Change Host Name dialog box opens.



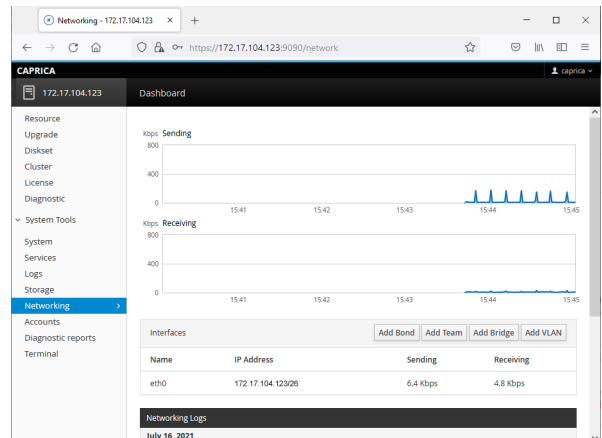
- In the Real Host Name box, enter the hostname of your previous Caprica Server.
- Click Change. The Change Host Name dialog box closes and the System web page Host Name field displays the updated hostname for your Caprica Server.

IP Address

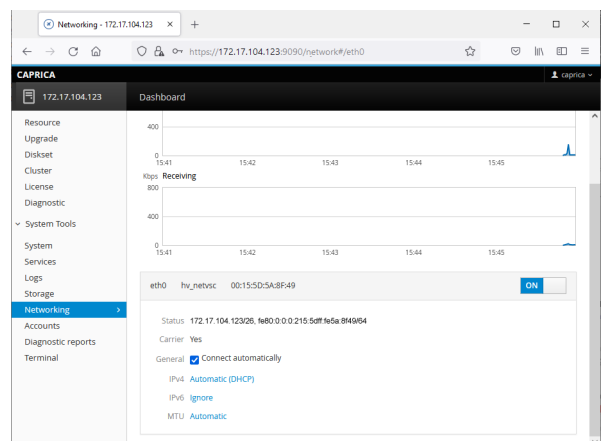
Change the IP address of your new Caprica8VM virtual machine to that of the old CapricaVM virtual machine.

To set the IP address for Caprica8VM

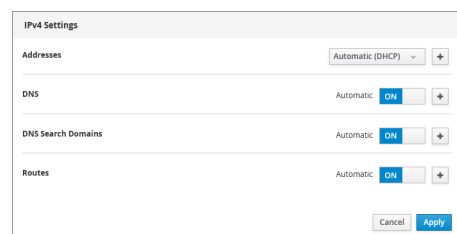
- In the tree view of the Caprica web page, click Networking. The Networking web page opens.



- In the Interfaces section, click eth0 in the list of available network interfaces. A panel opens for the eth0 network interface.



- In the IPv4 field, click the current setting. The IPv4 Settings dialog box opens.



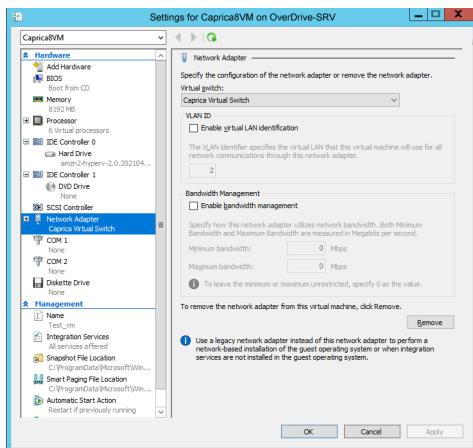
4. Use the Addresses list to select Manual.
5. In the Address box, enter a static IP address for the eth0 network interface.
6. In the Prefix length or Netmask box, enter the eth0 network interface.
7. In the Gateway box, enter the gateway for the eth0 network interface.
8. Click Apply.
The IPv4 field displays the set IP address for the eth0 network interface.

Switch Back to the External Network

After setting the hostname and IP address of the Caprica8VM virtual machine to the previous CapricaVM virtual machine settings, you must switch the Caprica8VM virtual machine network connection back to the external network.

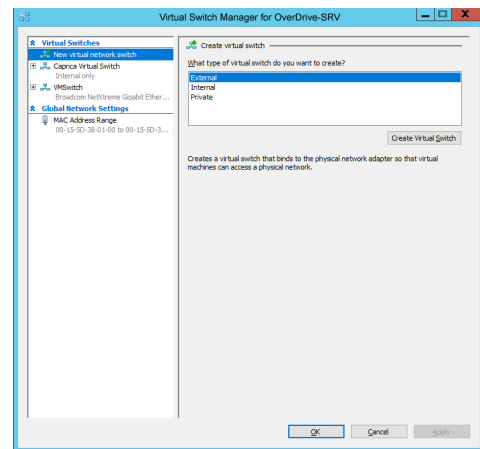
To switch back to the external network

1. On the OverDrive Server computer that hosts your Caprica Server in Hyper-V, start Hyper-V Manager.
2. In the Virtual Machines section select the Caprica8VM virtual machine.
3. In the Caprica8VM section of the Actions panel, select Settings.
The Settings dialog box opens.
4. In the Hardware section of the tree view, click Network Adapter.
The Network Adapter panel opens.



5. Use the Virtual switch list to select VMSwitch.
6. Click **OK** to save the selected Hyper-V network adapter setting and close the Settings dialog box.
7. In the Hyper-V Manager window, use the Action menu to select Virtual Switch Manager.

The Virtual Switch Manager dialog box opens.



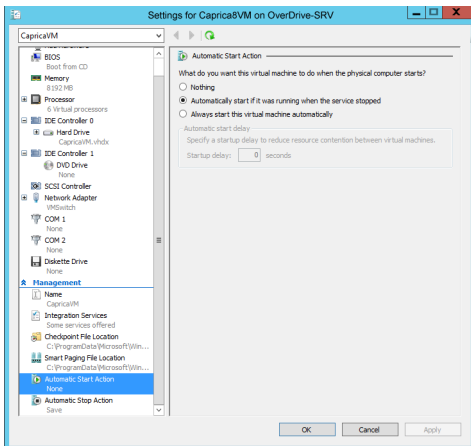
8. In the Virtual Switches section of the tree view, click Caprica Virtual Switch.
The Virtual Switch Properties panel opens for the Caprica Virtual Switch.
9. Click Remove.
Hyper-V Manager grays out the settings in the Virtual Switch Properties panel.
10. Click **OK** to remove the Caprica Virtual Switch and close the Virtual Switch Manager dialog box.
You can now use your set hostname or IP address to access the Caprica Server.

Reset Automatic Start and Stop

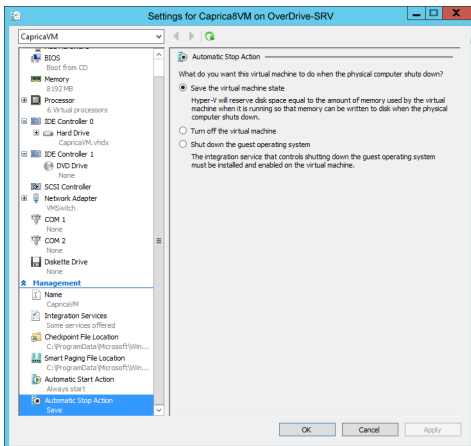
You must configure the Caprica8VM virtual machine to automatically start and stop with the OverDrive Server computer.

1. In the Hyper-V Manager, select the Caprica8VM virtual machine from the Virtual Machines section.
2. In the Caprica8VM section of the Actions panel, click Turn Off.
An **Alert** opens.
3. Click **Turn Off** to turn Caprica8VM off.
4. In the Caprica8VM section of the Actions panel, select Settings.
The Settings dialog box opens.

- In the Management section of the tree view, click Automatic Start Action.
The Automatic Start Action panel opens.



- Select the Always start this virtual machine automatically option to automatically start Caprica8VM with the OverDrive Server computer.
- In the Management section of the tree view, click Automatic Stop Action.
The Automatic Stop Action panel opens.



- Select the Shutdown the guest operation system option to automatically shutdown Caprica8VM with the OverDrive Server computer.
- Click OK to save the selected Hyper-V automatic start and stop options and close the Settings dialog box.
- Remove Virtual switch
- To start Caprica8VM after setting the automatic start and stop options, click Start in the Caprica8VM section

Restore Caprica Server Configuration

After creating and configuring a new Caprica8VM virtual machine for your Caprica Server to run Caprica version 8.x, refer to the following sections in the *Caprica User Guide* to restore the configuration of your Caprica Server:

- Software Installation — install the latest version of the Caprica Server software.
- Recalling Configurations from a Diskset — restore to the configuration from the OS8upgrade diskset you created from your previous Caprica Server.
- Caprica Server Software License — activate your Caprica Server with your product key.
- Redundant Caprica System — configure your Caprica Redundant system cluster settings.

Compatibility

Automation	Version
Caprica Server	8.0

Contacting Technical Support

Technical Support is staffed by a team of experienced specialists ready to assist you with any question or technical issue.

Ross Video has technical support specialists strategically located around the globe to ensure a prompt response to technical inquiries. Our primary technical support center is located in Ottawa, Ontario, Canada. In addition, we have offices in The United Kingdom (London), Australia (Sydney), and Singapore with satellite locations in New York City, The Netherlands, and China. As we expand our presence globally, we are constantly evaluating other key locations to have a local technical support specialist in order to better service our customers.

North America

Our North America center located in Ottawa, Ontario, Canada and is open Monday to Friday 8:30 a.m. to 6:00 p.m. EST, with 24/7/365 on-call service after hours.

Our telephone number is: +1-613-686-1557

Toll free within North America: +1 844-652-0645

EMEA

Our EMEA center is open Monday to Friday 8:30 a.m. to 5:00 p.m. GMT. After hours support is provided by our North America location.

Our telephone number is: +44 (0)1189502446

International toll free: +800 3540 3545

If the local support specialist is not available, your call will be transferred automatically to our North America center.

Australia

Our Sydney, Australia office is located in Alexandria, NSW.

Our local support telephone number is: 1300 007 677

If the local support specialist is not available, your call will be transferred automatically to our North America center.

Online

E-mail: techsupport@rossvideo.com

Website: open a support request using the link <http://www.rossvideo.com/support/tech-support.html> to open a support request.

Copyright

© 2014 - 2025 Ross Video Limited. Ross®, MLE®, OverDrive®, GlobalView®, RundownControl™, DirectControl™, DirectAudio™, DirectAUXaudio™, DirectCamera™, DirectServer™, QuickTurn™, RapidRestore™, SideShot™, SideSlide™, SideStick™, OverDrive Gateway™, LiveLink™, and any related marks are trademarks or registered trademarks of Ross Video Limited. All other trademarks are the property of their respective companies. PATENTS ISSUED and PENDING. All rights reserved. No part of this publication may be reproduced, stored in a retrieval system, or transmitted in any form or by any means, mechanical, photocopying, recording or otherwise, without the prior written permission of Ross Video. While every precaution has been taken in the preparation of this document, Ross Video assumes no responsibility for errors or omissions. Neither is any liability assumed for damages resulting from the use of the information contained herein.