

Abekas® DashBoard Service

The Abekas® OGP (openGear® Protocol) Service allows you to connect to your server from DashBoard.

To Install the Abekas® OGP Service

The AbekasOGP application should already be installed on your server. If it is not, you can download and install the application manually.

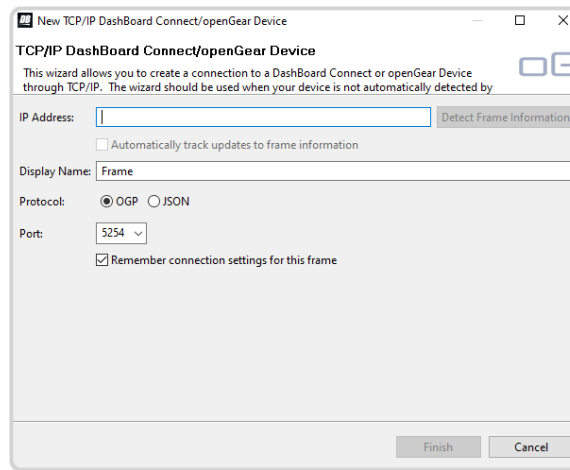
1. Navigate to the **Downloads** section of the Ross® website for your server product and download the Abekas® OGP DashBoard Service.

Tip: For example, if you have a Mira server, you would navigate to <https://www.rossvideo.com/support/software-downloads/mira/>.

2. Run the Abekas_#. #. #_setup.exe application on your server and follow the wizard to install the service.

To Connect to the Server from DashBoard

1. Click **File > New > TCP/IP DashBoard Connect or openGear Device**.

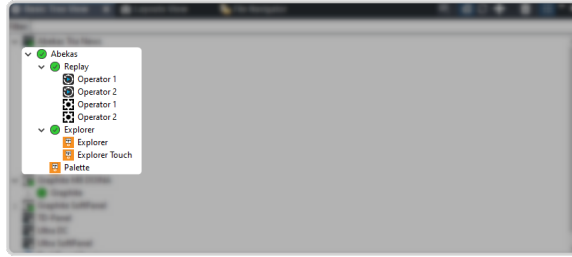


2. In the **IP Address** field, enter the IP address of the server.
3. In the **Display Name** field, enter the name you want to use to identify the server in DashBoard. This should be a unique name for the server you are setting up.
4. Select **JSON**.
5. In the **Port** field, enter 5254.
6. Click **Finish**.

The server appears in the **Tree View**.

DashBoard Interface

The server appears as a node in the DashBoard Basic Tree View. The **Replay** and **Explorer** sub-nodes can be expanded to show the **Operator** and **Explorer** pages.



Replay

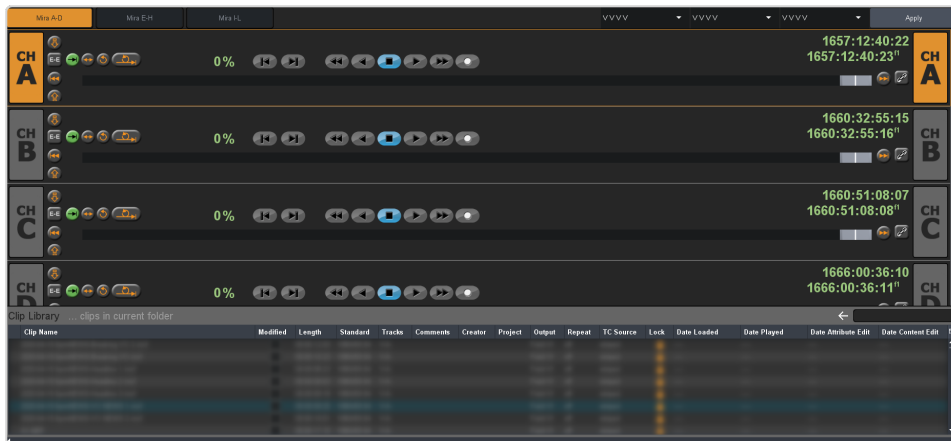
The **Operator 1** and **Operator 2** pages are also known as **MiraTouch Horse Racing** panels and are intended to be used in a 4-in/2-out replay configuration for horse racing.



Explorer

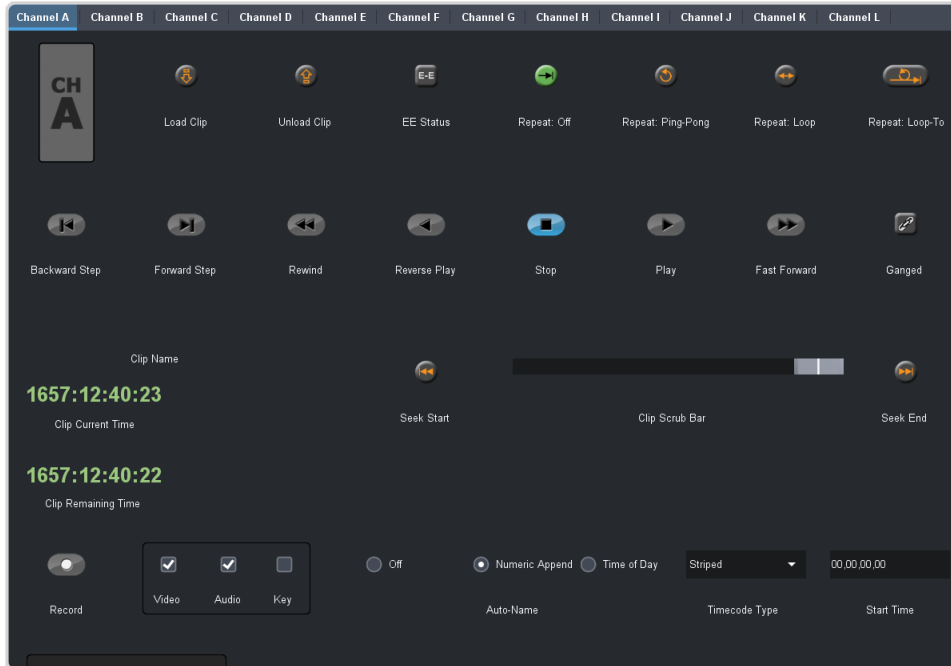
The **Explorer** and **Explorer Touch** pages mirror the operation of the **Explorer** application of your server. The **Explorer Touch** page is smaller version designed to fit into Live Assist.

Tip: Portions of these pages can be dragged onto a custom panel in DashBoard PanelBuilder.



Palette

The **Palette** page provides a number of widgets for use in PanelBuilder.

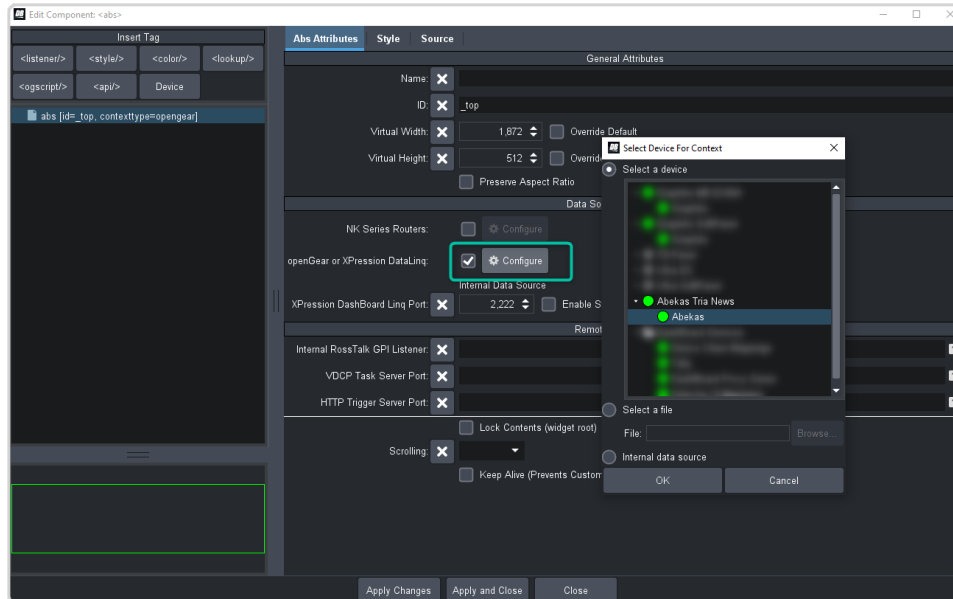


PanelBuilder Custom Panel Attributes

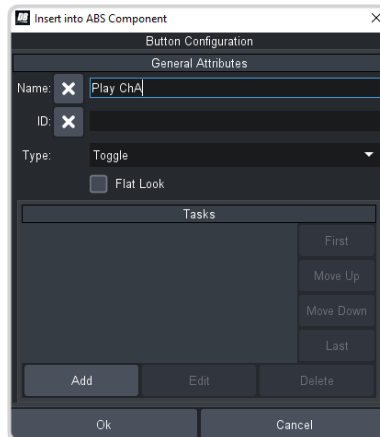
When building a custom panel in DashBoard, you can connect to your server as a data source. This allows you access to numerous powerful commands and parameters native to your server.

To Add a Server Command to a Custom Panel

1. Double-click on the canvas of your custom panel and click the **openGear or XPression DataLinq Configure** button.



2. Click **Select a device** and select **Abekas**.
3. Click **OK**.
The **Current** below the button shows the **Abekas** server.
4. Insert a button or other interface element to your custom panel.



5. Edit your interface element as normal and click **Add** in the **Tasks** area.
You can now drag and drop Abekas[®] server commands to the script editor to create visual logic chains.

