

FUJIFILM
expect INNOVATION™

ZA SELECT



ZA22x7.6BE RM/RD

Technology That Inspires...

FUJINON

ZA22x7.6BE RM/RD*



LENS	ZA22x7.6BE RM/RD*
Zoom Ratio / Format	22X / 2/3"
Focal Length	7.6 to 167 mm (2X) 15.2 to 334 mm
Extender	
Maximum Relative Aperture	1:1.8 (7.6 ~ 120 mm)
Aperture	1:2.5 (167 mm)
Maximum Photometric Aperture T-No.	1:1.9 (7.6 ~ 120 mm) 1:2.6 (167 mm)
Angular Field of View	7.6 mm 64° 30' x 39° 03'
16:9 Aspect Ratio	167 mm 3° 08' x 1° 46' (2X) 15.2 mm 35° 01' x 20° 07' 334 mm 1° 34' x 0° 53'
M.O.D. from Image Plane	1.07 m
M.O.D. from Front of Lens	0.8 m
Object Dimensions at M.O.D.	7.6 mm 909 x 511 mm 167 mm 43 x 24 mm (2X) 15.2 mm 455 x 256 mm 334 mm 22 x 12 mm
Filter Size	ø 95 mm P=1 (On Barrel) ø 107 mm P=1 (In Hood)
Dia ø x Length (w/o Hood)	ø100 x 222.6 mm
Weight (w/o Hood)	1.75 kg (RM) / 1.82 kg (RD)*
Options	16 Bit Encoder
Features	Inner Focus / Zoom Limit Quick Zoom

*RD contain servos for zoom and focus.

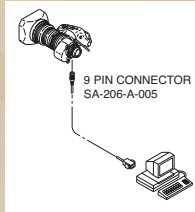
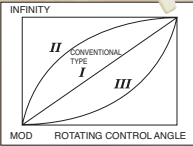
ACCESSORIES: HD & SD ENG/EFP

THREE-MODE FINE FOCUS

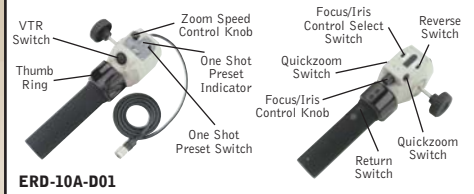
By shifting the sensitivity from the wide side to the telephoto side of the focus range, this control provides more precise focusing for studio or sports productions.

SERIAL DIGITAL REMOTE CONTROL BY PC

Remote control of zoom, focus and iris for Digipower lenses is possible via serial digital link, providing accurate positioning for virtual studio and other applications requiring digital precision.



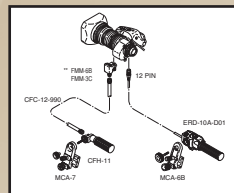
DIGI ZOOM DEMAND*



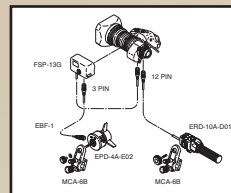
*New Digital features only available on ERM/ERD-M/S.

DIGI POWER REAR CONTROL KITS

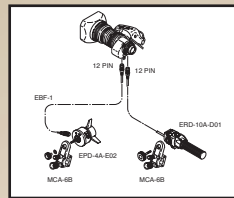
MS-11D Manual Focus/Servo Zoom
For use with RM/ZM type lenses.



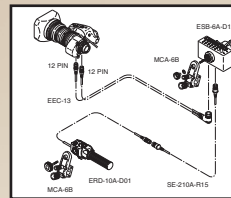
SS-11D Servo Focus/Servo Zoom
For use with RM/ZM type lenses.



SS-13D Servo Focus/Servo Zoom
For use with RD/ZD type lenses.

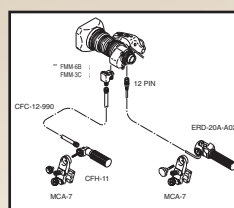


SS-14S Servo Focus/Servo Zoom
For use with RD/ZD type lenses.

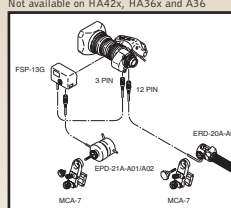


STANDARD REAR CONTROL KITS

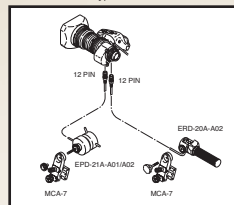
MS-11 Manual Focus/Servo Zoom



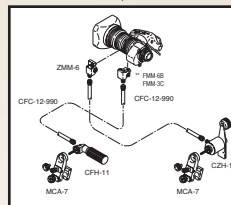
SS-11 Servo Focus/Servo Zoom
Not available on HA42x, HA36x and A36



SS-13A Servo Focus/Servo Zoom
For use with ERD type lenses.



MM-11 Manual Focus/Manual Zoom
Not available on HA42x, HA36x and A36x



*Specify camera type
**FMM-3C for use on HA36x, HA42x and HA25x

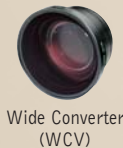
MOUNTING SYSTEM

Fujinon has replaced the "cone" shaped mounting system with the "tooth" system. The cone type may still be ordered as a special order.



ACCESSORIES: HD ENG/EFP

LENS CONVERTERS



Wide Converter (WCV)

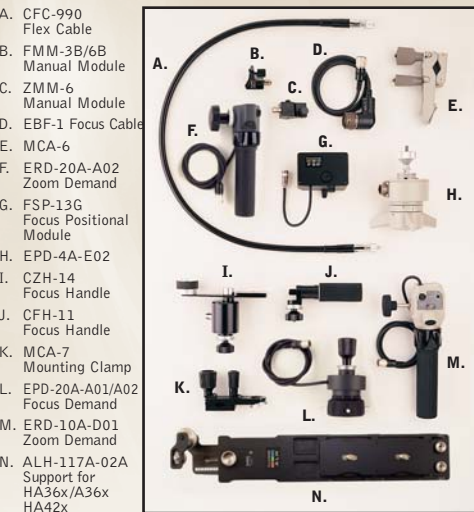
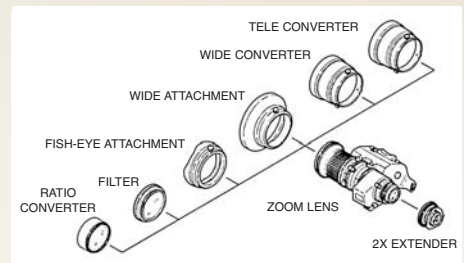


Tele Converter (TCV)

HD/ENG LENS CONVERTERS

Model	Type	ø Size	Converter* Mag.	Converted Focal Length (mm)	M.O.D. (m)	Weight (kg)
HS16x4.6	TELE	95 mm	TCV-H95	1.5x	74.0→111.0	0.90
	WIDE	95 mm	WCV-H95	0.8x	4.6→3.9	0.29
HS18x5.5/ HS18x5.5	TELE	85 mm	TCV-H85	1.5x	100.0→150.0	1.35
	WIDE	85 mm	WCV-H85	0.8x	5.5→4.4	0.38
HA16x6.3	TELE	95 mm	TCV-H95	1.5x	101.0→152.0	0.90
	WIDE	95 mm	WCV-H95	0.8x	6.3→5.4	0.29
HA18x7.6E/ HA18x7.6	TELE	85 mm	TCV-H85	1.5x	137.0→205.5	1.35
	WIDE	85 mm	WCV-H85	0.8x	7.6→6.1	0.38
HA22x7.3E	TELE	110 mm	TCV-H110	1.5x	161.0→242.0	1.90
	WIDE	110 mm	WCV-H110	0.8x	7.6→6.1	0.51
HA23x7.6E	TELE	100 mm	TCV-H100	1.5x	175.0→262.5	1.80
	WIDE	100 mm	WCV-H100	0.8x	7.6→6.1	0.51
XS17x5.5	TELE	85 mm	TCV-H85	1.5x	94.0→141.0	1.35
	WIDE	85 mm	WCV-H85	0.8x	5.5→4.4	0.38
ZA17x7.6	TELE	85 mm	TCV-H85	1.5x	130.0→195.0	1.35
	WIDE	85 mm	WCV-H85	0.8x	7.6→6.1	0.38
ZA22x7.6	TELE	100 mm	TCV-H100	1.5x	167.0→250.5	1.80
	WIDE	100 mm	WCV-H100	0.8x	7.6→6.1	0.51
	WIDE	100 mm	WAT-H100	0.7x	7.6→5.3	0.39
	FISHEYE	85 mm	F-ATH85	0.57x	7.6→4.3	0.19
	WIDE	100 mm	F-ATH100	0.57x	7.6→4.3	0.26
	FISHEYE	100 mm	F-ATH100	0.57x	7.6→4.3	0.26

*TCV/WCV are zoom thru type **ø 95mm P-1 screw on type
Wide attachment and fisheye attachment can be used at WIDE END.
Number of M.O.D. is at wide end.



Note: ERD-20A-A02 (F) and EPD-20A-A02 (L) replace the ERD-T22 and EPD-2CA.

For Sales Contact Information go to
www.Fujinon.com