



---

**IGGY-MADI User Guide**

# Thank You for Choosing Ross

You've made a great choice. We expect you will be very happy with your purchase of Ross Technology. Our mission is to:

1. Provide a Superior Customer Experience
  - offer the best product quality and support
2. Make Cool Practical Technology
  - develop great products that customers love

Ross has become well known for the Ross Video Code of Ethics. It guides our interactions and empowers our employees. I hope you enjoy reading it below.

If anything at all with your Ross experience does not live up to your expectations be sure to reach out to us at [solutions@rossvideo.com](mailto:solutions@rossvideo.com).



David Ross  
CEO, Ross Video  
[dross@rossvideo.com](mailto:dross@rossvideo.com)

## Ross Video Code of Ethics

Any company is the sum total of the people that make things happen. At Ross, our employees are a special group. Our employees truly care about doing a great job and delivering a high quality customer experience every day. This code of ethics hangs on the wall of all Ross Video locations to guide our behavior:

1. We will always act in our customers' best interest.
2. We will do our best to understand our customers' requirements.
3. We will not ship crap.
4. We will be great to work with.
5. We will do something extra for our customers, as an apology, when something big goes wrong and it's our fault.
6. We will keep our promises.
7. We will treat the competition with respect.
8. We will cooperate with and help other friendly companies.
9. We will go above and beyond in times of crisis. *If there's no one to authorize the required action in times of company or customer crisis - do what you know in your heart is right. (You may rent helicopters if necessary.)*

# IGGY-MADI · User Guide

- Ross Part Number: **1000DR-814-01**
- Software Version: 1.0
- Release Date: June 6, 2019.

The information contained in this manual is subject to change without notice or obligation.

## Copyright

©2019 Ross Video Limited, Ross®, and any related marks are trademarks or registered trademarks of Ross Video Limited. All other trademarks are the property of their respective companies. PATENTS ISSUED and PENDING. All rights reserved. No part of this publication may be reproduced, stored in a retrieval system, or transmitted in any form or by any means, mechanical, photocopying, recording or otherwise, without the prior written permission of Ross Video. While every precaution has been taken in the preparation of this document, Ross Video assumes no responsibility for errors or omissions. Neither is any liability assumed for damages resulting from the use of the information contained herein.

## Patents

Patent numbers US 7,034,886; US 7,508,455; US 7,602,446; US 7,802,802 B2; US 7,834,886; US 7,914,332; US 8,307,284; US 8,407,374 B2; US 8,499,019 B2; US 8,519,949 B2; US 8,743,292 B2; GB 2,419,119 B; GB 2,447,380 B; and other patents pending.

## Notice

The material in this manual is furnished for informational use only. It is subject to change without notice and should not be construed as commitment by Ross Video Limited. Ross Video Limited assumes no responsibility or liability for errors or inaccuracies that may appear in this manual.

## Safety Notices

Refer to the “**Important Regulatory and Safety Notices**” document that accompanied your product.

## Statement of Compliance

This product has been determined to be compliant with the applicable standards, regulations, and directives for the countries where the product is marketed.

Compliance documentation, such as certification or Declaration of Compliance for the product is available upon request by contacting [techsupport@rossvideo.com](mailto:techsupport@rossvideo.com). Please include the product; model number identifiers and serial number and country that compliance information is needed in the request.

## EMC Notices

### United States of America - FCC Part 15

This equipment has been tested and found to comply with the limits for a class A Digital device, pursuant to part 15 of the FCC Rules.

These limits are designed to provide reasonable protection against harmful interference when the equipment is operated in a Commercial environment. This equipment generates, uses, and can radiate radio frequency energy and, if not installed and used in accordance with the instruction manual, may cause harmful interference to radio communications. Operation of this equipment in a residential area is likely to cause harmful interference in which case the user will be required to correct the interference at his own expense.



---

**Notice** — *Changes or modifications to this equipment not expressly approved by Ross Video Ltd. could void the user's authority to operate this equipment.*

---

### Canada

This Class A device complies with Canadian ICES-003 and part 15 of the FCC Rules.

Cet appareil numérique de la classe “A” est conforme à la norme NMB-003 du Canada.

## European Union

This equipment is in compliance with the essential requirements and other relevant provisions established under regulation (EC) No 765/2008 and Decision No 768/2008/EC referred to as the “New Legislative Framework”.



**Warning** — *This equipment is compliant with Class A of CISPR 32. In a residential environment this equipment may cause radio interference.*

## Australia/New Zealand

This equipment is in compliance with the provisions established under the Radiocommunications Act 1992 and Radiocommunications Labelling (Electromagnetic Compatibility) Notice 2008.

## Korea

Class A equipment (Broadcasting and communications service for business use).

This device is a business-use (Class A) EMC-compliant device. The seller and user are advised to be aware of this fact. This device is intended for use in areas outside home.

Type of Equipment	User's Guide
A급 기기 (업무용 방송통신기자재)	이 기기는 업무용(A급) 전자파적합기기로서 판매자 또는 사용자는 이 점을 주의하시기 바라며, 가정외의 지역에서 사용하는 것을 목적으로 합니다.
Class A Equipment (Industrial Broadcasting & Communication Equipment)	This equipment is <b>Industrial (Class A) electromagnetic wave suitability equipment</b> and seller or user should take notice of it, and this equipment is to be used in the places except for home.

## International

This equipment has been tested under the requirements of CISPR 22:2008 or CISPR 32:2015 and found to comply with the limits for a Class A Digital device.

**Notice** — *This is a Class A product. In domestic environments, this product may cause radio interference, in which case the user may have to take adequate measures.*

## Maintenance/User Serviceable Parts

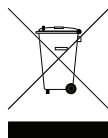
Routine maintenance to this Ross product is not required. This product contains no user serviceable parts. If the module does not appear to be working properly, please contact Technical Support using the numbers listed under the section “**Contacting Technical Support**” on page 12. This product is covered by a generous 1-year warranty and will be repaired without charge for materials or labor within this period. See the section “**Warranty and Repair Policy**” on page 107 for details.

## Environmental Information

The equipment may contain hazardous substances that could impact health and the environment.

To avoid the potential release of those substances into the environment and to diminish the need for the extraction of natural resources, Ross Video encourages you to use the appropriate take-back systems. These systems will reuse or recycle most of the materials from your end-of-life equipment in an environmentally friendly and health conscious manner.

The crossed-out wheeled bin symbol invites you to use these systems.



If you need more information on the collection, reuse, and recycling systems, please contact your local or regional waste administration. You can also contact Ross Video for more information on the environmental performances of our products.

## Company Address



**Ross Video Limited**  
8 John Street  
Iroquois, Ontario  
Canada, K0E 1K0

**Ross Video Incorporated**  
P.O. Box 880  
Ogdensburg, New York  
USA 13669-0880

---

General Business Office: (+1) 613 • 652 • 4886

Fax: (+1) 613 • 652 • 4425

Technical Support: (+1) 613 • 652 • 4886

After Hours Emergency: (+1) 613 • 349 • 0006

E-mail (Technical Support): [techsupport@rossvideo.com](mailto:techsupport@rossvideo.com)

E-mail (General Information): [solutions@rossvideo.com](mailto:solutions@rossvideo.com)

Website: <http://www.rossvideo.com>



# Contents

<b>Introduction</b>	<b>11</b>
Related Publications .....	11
Documentation Conventions .....	12
Interface Elements .....	12
User Entered Text .....	12
Referenced Guides .....	12
Menu Sequences .....	12
Important Instructions .....	12
Contacting Technical Support .....	12
<b>Before You Begin</b>	<b>13</b>
Features .....	13
Work Flow Diagram .....	14
What are Receivers, Senders, and Streams? .....	14
Installation and Setup Overview .....	15
<b>Audio Mapping Examples</b>	<b>17</b>
Direct Audio Mapping .....	17
One-to-Many Direct Audio Mapping .....	18
Custom Network Streams .....	19
<b>Hardware Overview</b>	<b>21</b>
Chassis Faceplate Overview .....	21
PSU Connection and PWR Status LED .....	21
PWR 15V 4A Connection .....	22
PWR/STAT LED .....	22
CONTROL Port .....	23
NET 1, NET 2 Ports .....	23
NET 1 ACT LED .....	24
MADI Connection .....	24
MADI LOCK LED .....	25
Reference Connections .....	25
PTP LEDs Overview .....	25
PTP Slv/Mst LED .....	26
PTP LOCK LED .....	26
TALLY/GPIO Port .....	27
Other Features .....	27
Reset Button .....	27
USB Port .....	28
<b>Physical Installation</b>	<b>29</b>
Static Discharge .....	29
Working with Fiber Optic Connectors .....	29
Unpacking .....	29
Mounting and Installing the IGGY-MADI .....	29
<b>Cabling</b>	<b>31</b>
Before You Begin .....	31
Connecting to a 15V PSU .....	31
Cabling the NET Ports .....	31

Cabling NET 1 as a PoE Connection .....	31
Connecting the NET Ports to a Network .....	31
Cabling the CONTROL Port .....	32
Cabling the MADI Port .....	32
Cabling the Reference Ports .....	32
Connecting a Reference Source to the IGGY-MADI .....	32
Cabling the Reference Output .....	33
Connecting an External Device to the TALLY/GPIO Port .....	33
GPIO Pin Designations .....	33
Tally Pin Designations .....	34
<b>Getting Started</b> .....	<b>35</b>
Before You Begin .....	35
Configuration Overview .....	35
Launching DashBoard .....	35
Using Walkabout to Assign the Initial IP Address to IGGY-MADI .....	35
Manually Adding the IGGY-MADI to the Tree View .....	36
Using the IGGY Setup Wizard .....	37
Accessing the IGGY-MADI in DashBoard .....	38
Configuring the Device Settings .....	38
Setting the Audio Channel Count Mode .....	39
<b>Configuring the Ethernet Settings</b> .....	<b>41</b>
Configuring the CONTROL Port .....	41
Configuring the NET Ports .....	42
<b>Protocol Setup</b> .....	<b>43</b>
Registration and Discovery .....	43
RAVENNA Support .....	43
RTSP Support .....	43
Ember+ Support .....	44
NMOS Support .....	47
<b>Configuring the Timing Settings</b> .....	<b>49</b>
Configuring the PTP Settings .....	49
Configuring the Audio Offset for Outputs .....	50
Setting the Audio Packet Time .....	51
<b>Configuring the Destinations</b> .....	<b>53</b>
Using the Default Destination Settings .....	53
Customizing a Destination .....	53
<b>Configuring the Senders</b> .....	<b>55</b>
Configuring an Audio Sender .....	55
Mapping the Audio Channels to a Sender Stream .....	55
<b>Setting up the Network Streams</b> .....	<b>59</b>
Overview .....	59
What is a Network Stream Source? .....	59
Work Flow .....	59
Adding a Network Stream Source .....	59
Using an Advertised Stream .....	59
Manually Assigning a Stream .....	60
Mapping the Audio Channels .....	61

<b>Operation</b>	<b>63</b>
Connections Tab Overview .....	63
Routing the Signals .....	64
Using IGGY-MADI with Ultritouch .....	64
Accessing the IGGY-MADI Interfaces .....	65
<b>Configuring the GPIO and Tallies</b>	<b>67</b>
Configuring a GPIO .....	67
Configuring a Tally .....	67
<b>Upgrading the Software</b>	<b>69</b>
<b>DashBoard Interface Overview</b>	<b>71</b>
Welcome Tab .....	71
Initial Setup Tab .....	72
Connections Tab .....	72
Routing Selection Area .....	72
Stream Sources Area .....	73
Network Streams Tab .....	74
Advanced Tabs .....	76
Status Tab .....	76
MADI Input Tab .....	78
Device Setup Tab .....	79
Ethernet I/O Tab .....	81
Receivers Tab .....	82
Destinations Tab .....	83
Senders Tab .....	84
Discovery Tab .....	87
Timing Tab .....	89
GPIO Tabs .....	92
Alarms Tab .....	94
Logs Tab .....	95
<b>Technical Specifications</b>	<b>97</b>
CONTROL Port .....	97
NET 1 and NET 2 Ports .....	97
Tally/GPIO Port .....	97
Reference Clock .....	98
Power .....	98
Environment .....	98
Dimensions .....	98
<b>Supported SFP Models</b>	<b>99</b>
SFP-MADI-COAX .....	99
Features .....	99
Functional Description .....	99
Module Installation .....	99
Absolute Maximum Ratings .....	99
Recommended Operating Conditions .....	100
MADI Receive Characteristics .....	100
MADI Transmit Characteristics .....	100
Mechanical Specifications .....	100
SFP-MADI-1310SM .....	101
Features .....	101

Absolute Maximum Ratings .....	101
Optical Performance Specifications .....	101
Physical Channel Position .....	102
SFP-MADI-850MM .....	103
Features .....	103
Absolute Maximum Ratings .....	103
Transmitter Performance Characteristics .....	103
Receiver Performance Characteristics .....	104
Physical Channel Position .....	104
<b>Service Information</b> .....	<b>107</b>
Troubleshooting Checklist .....	107
Warranty and Repair Policy .....	107
In Case of Problems .....	107
<b>Software Licenses</b> .....	<b>109</b>
BSD .....	109
Dual GPL .....	109
GPL .....	109
LGPL .....	114
MIT .....	115
zlib .....	115
<b>Glossary</b> .....	<b>117</b>

# Introduction

This guide covers the installation, configuration, and use of the IGGY-MADI. The following chapters are included:

- “**Introduction**” summarizes the guide and provides important terms, and conventions.
- “**Before You Begin**” provides a brief product overview and installation requirements for the IGGY-MADI.
- “**Hardware Overview**” describes the IGGY-MADI hardware features and physical connections.
- “**Physical Installation**” provides information when installing the IGGY-MADI in your system.
- “**Cabling**” provides an overview of connecting external devices to the IGGY-MADI.
- “**Getting Started**” outlines how to display the IGGY-MADI interfaces in DashBoard.
- “**Configuring the Ethernet Settings**” provides instructions for configuring the IGGY-MADI settings for basic network communications.
- “**Protocol Setup**” provides information for setting up media distribution via the IGGY-MADI using third-party protocols.
- “**Configuring the Timing Settings**” provides instructions for configuring the IGGY-MADI to use Precision Time Protocol, and specifying a reference source.
- “**Configuring the Destinations**” provides instructions for configuring the destination channels on the IGGY-MADI.
- “**Configuring the Senders**” provides instructions for configuring the sender channels on the IGGY-MADI.
- “**Setting up the Network Streams**” outlines how to define the network streams that the IGGY-MADI can access.
- “**Operation**” provides general information for operating the IGGY-MADI.
- “**Configuring the GPIO and Tallies**” provides instructions for configuring the General Purpose Interface Inputs/Outputs of the IGGY-MADI.
- “**Monitoring the Receivers**” provides a summary of monitoring a receiver channel for audio streaming.
- “**Upgrading the Software**” provides instructions for upgrading the software via DashBoard.
- “**DashBoard Interface Overview**” summarizes the functions, menus, and parameters of the IGGY-MADI in DashBoard.
- “**Technical Specifications**” provides the specifications for the IGGY-MADI.
- “**Supported SFP Models**” provides additional information on the Small Form Pluggable (SFP) modules that can be installed in the **MADI** port of the IGGY-MADI.
- “**Service Information**” provides information on the warranty and repair policy for your IGGY-MADI.
- “**Software Licenses**” provides third-party software license information for your IGGY-MADI.
- “**Glossary**” provides a list of terms used throughout this guide.

## Related Publications

It is recommended to consult the following Ross documentation before installing and configuring your IGGY-MADI:

- *DashBoard User Manual*, Ross Part Number: 8351DR-004
- *IGGY-MADI Quick Start Guide*, Ross Part Number: 1000DR-806
- IGGY-MADI video tutorials, available from the Ross View website (<http://www.rossvideo.com>)

## Documentation Conventions

Special text formats are used in this guide to identify parts of the user interface, text that a user must enter, or a sequence of menus and sub-menus that must be followed to reach a particular command.

### Interface Elements

Bold text is used to identify a user interface element such as a dialog box, or menu. Bold text set in Arial font is used to identify a button. For example:

In the **Edit** dialog, click **Apply**.

### User Entered Text

Courier text is used to identify text that a user must enter. For example:

In the **Language** box, enter **English**.

### Referenced Guides

Italic text is used to identify the titles of referenced guides, manuals, or documents. For example:

For more information, refer to the *DashBoard User Manual*.

### Menu Sequences

Menu arrows are used in procedures to identify a sequence of menu items that you must follow. For example, if a step reads “**Advanced** > **Timing**,” you would select the **Advanced** tab and then select the **Timing** sub-tab.

### Important Instructions

Star icons are used to identify important instructions or features. For example:

- ★ Contact your IT department before connecting to your facility network to ensure that there are no conflicts. They will provide you with an appropriate value for the IP Address, Subnet Mask, and Gateway for your IGGY-MADI.

## Contacting Technical Support

At Ross Video, we take pride in the quality of our products, but if problems occur, help is as close as the nearest telephone.

Our 24-hour Hot Line service ensures you have access to technical expertise around the clock. After-sales service and technical support is provided directly by Ross Video personnel. During business hours (Eastern Time), technical support personnel are available by telephone. After hours and on weekends, a direct emergency technical support phone line is available. If the technical support person who is on call does not answer this line immediately, a voice message can be left and the call will be returned shortly. This team of highly trained staff is available to react to any problem and to do whatever is necessary to ensure customer satisfaction.

- **Technical Support:** (+1) 613-652-4886
- **After Hours Emergency:** (+1) 613-349-0006
- **E-mail:** [techsupport@rossvideo.com](mailto:techsupport@rossvideo.com)
- **Website:** <http://www.rossvideo.com>

# Before You Begin

If you have questions pertaining to the operation of the IGGY-MADI, contact us at the numbers listed in the section “**Contacting Technical Support**” on page 12. Our technical staff is always available for consultation, training, or service.

## Features

Some features of the IGGY-MADI include:

- Bi-directional MADI SFP port capable of supporting 64 channels in/out
- Dual redundant Gigabit Ethernet audio interfaces, and optional GE control interface
- 4 isolated tally out, 8 TTL GPIO controller via RossTalk and TSL
- 32 audio receivers, 16 audio senders
  - › SMPTE ST 2022-7 hitless 1+1 redundancy per sender and receiver
  - › Packet times: 125µs, 250µs, and 1ms
  - › Samples/packet: 6, 12, and 48
  - › Sample rates: 48kHz and 44.1kHz with ASRC
  - › 1-64 channels, configurable per audio stream
  - › Audio formats: L24, L16, L32, and AM824, configurable per audio stream
  - › WAN-capable buffering: 30ms per receiver stream
- SMPTE ST 2110-31 AES3 Transparent Transport
- SMPTE ST 2110-30, including all conformance levels: A, B, and C
- Supports discover and registration via:
  - › RAVENNA
  - › NMOS IS-04
  - › Dante/SAP (only in AES67 mode)
- Connection control via:
  - › Ember+
  - › JSON API
  - › NMOS IS-05
- Configuration via JSON API
- Flexible mounting options
- Full DashBoard control

## Work Flow Diagram

Figure 2.1 provides an example work flow of the IGGY-MADI.

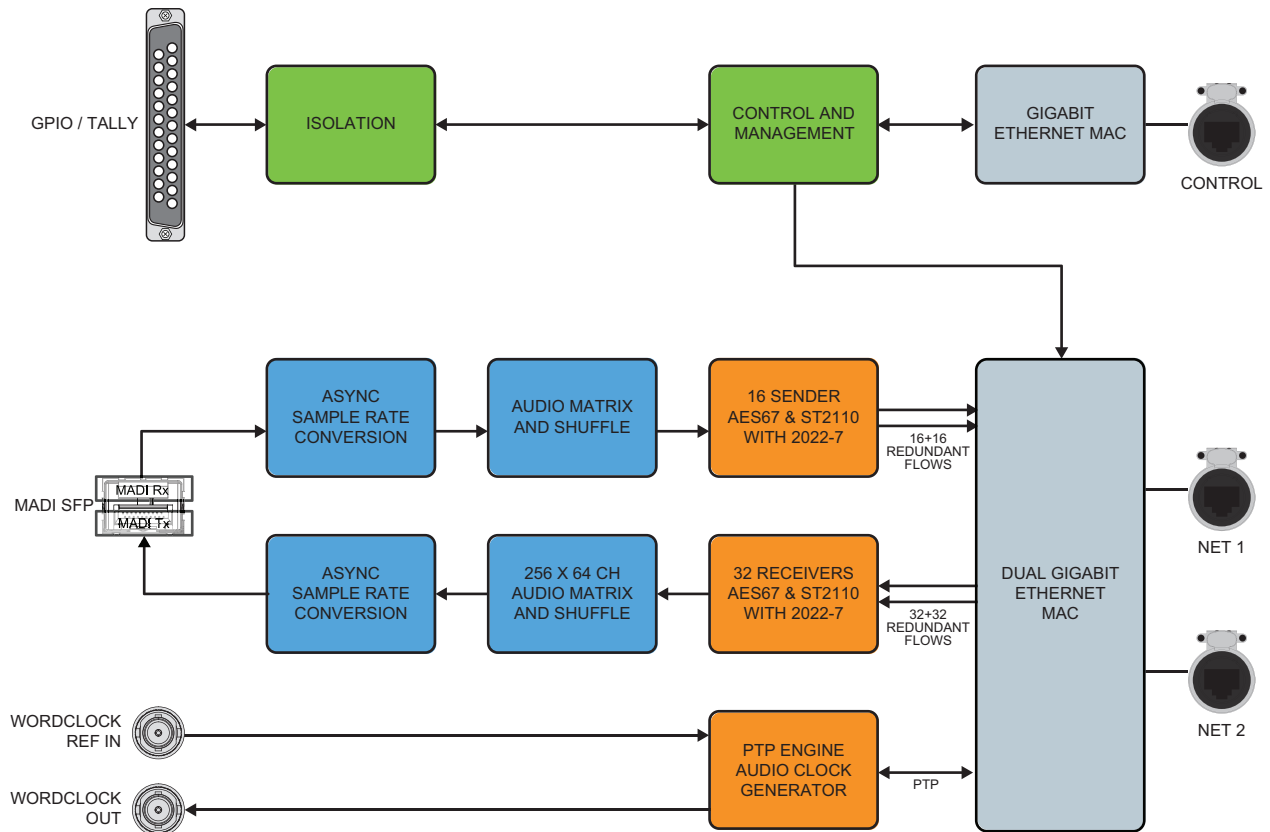


Figure 2.1 IGGY-MADI Work Flow Diagram

## What are Receivers, Senders, and Streams?

The following terms are used throughout this user guide:

### Device

A physical, virtual, or software application that may include multiple sources, destinations, senders, or receivers.

### Essence

A single elementary logical media signal. For example, a video essence is one video channel. An audio essence is a single audio (mono) channel.

### Flow

The continuous raw media content. It can contain more than one essence (e.g. an audio flow can contain multiple channels).

A flow is independent of the transport protocol. For example, 48kHz LPCM audio is a flow; AES67 is one type of stream which can carry the flow.

Flows cannot generally be passed around natively, and need to be encapsulated in a stream. Flows from the same source are considered “editorially equivalent”, but may be encoded differently.

## Receiver

An element within a device that receives exactly one stream, which contains one flow from a network.

## Sender

An element within a device which presents exactly one flow, packaged as a stream onto a network.

## Stream

One flow, encapsulated within a transport protocol. Examples include SMPTE ST 2022-6, SMPTE ST 2110-20 Video, or SMPTE ST 2110-30 Audio (AES67).

## Installation and Setup Overview

The generalized work flow of installing and configuring your IGGY-MADI is:

1. Download and install the latest version of the DashBoard client software.
2. Contact your IT department for the required IP addresses for your IGGY-MADI.
3. Physically install and cable the IGGY-MADI.
4. Use DashBoard to access the IGGY-MADI.
5. Use the IGGY Setup Wizard to configure the basic settings for your module.
6. Define the Network Stream Sources.
7. Make your connections.



# Audio Mapping Examples

This chapter provides three examples of possible audio map scenarios and a brief summary of how to configure each example in Dashboard. Your requirements may differ from what is presented here.

## Direct Audio Mapping

This example assumes the IGGY-MADI automatically detects the available network streams, and the streams have the same number of audio channels as the destinations. (**Figure 3.1**)

**1** Configure the Destinations

Network Audio Streams  
Detects the Advertised Streams

Enable	Destination Name	Number of Channels
<input checked="" type="checkbox"/>	Destination 1	16
<input checked="" type="checkbox"/>	Destination 2	16
<input checked="" type="checkbox"/>	Destination 2	16
<input checked="" type="checkbox"/>	Destination 4	16

**2**

**3** 1:1 Map to the MADI Outputs

Figure 3.1 Setup Example — Direct Audio Mapping

### To apply direct audio mapping

1. Configure the Destinations on the IGGY-MADI. Refer to “**Configuring the Destinations**” on page 53.
2. On the **Connections** tab, select the **Advertised Streams** option from the **Stream** area.
3. Use the **Connections** tab to map the Destinations to the IGGY-MADI outputs. Refer to “**Routing the Signals**” on page 64.

# One-to-Many Direct Audio Mapping

This example assumes the IGGY-MADI automatically detects a specified network stream, and the streams match the number of audio channels of the destinations. (Figure 3.2)

In this example, the user maps the same stream to multiple destinations.

The figure illustrates the configuration process for one-to-many direct audio mapping. It is divided into two main sections: '1 Configure the Destinations' and '3 1:1 Map to the MADI Outputs'.

**1 Configure the Destinations:** This section shows the 'Advanced Settings and Status' page. A table lists destinations for MADI A, B, C, and D. Each destination is enabled and mapped to a specific destination name and channel count.

Enable	Destination Name	Number of Channels
<input checked="" type="checkbox"/>	Destination 1	16
<input checked="" type="checkbox"/>	Destination 2	16
<input checked="" type="checkbox"/>	Destination 3	16
<input checked="" type="checkbox"/>	Destination 4	16

**3 1:1 Map to the MADI Outputs:** This section shows the 'Routing Selection' page. It displays four MADI outputs (MADI A, B, C, D) and their corresponding destination names. The 'Stream Sources' section shows a list of detected streams, with 'TPGIn' selected for all four MADI outputs.

Annotations on the left side of the figure indicate the connection of 'Network Audio Streams' to 'Connect Advertised Stream A' for each of the four MADI outputs.

Figure 3.2 Setup Example — One to Many Direct Audio Mapping

## To apply one-to-many direct audio mapping

1. Configure the Destinations on the IGGY-MADI. Refer to “Configuring the Destinations” on page 53.
2. On the **Connections** tab, select the **Advertised Streams** option from the **Stream** area.
3. Map the same Destination to each of the IGGY-MADI Outputs. Refer to “Routing the Signals” on page 64.

In **Figure 3.2**, the user mapped TPGIn to Destinations 1-4.

## Custom Network Streams

This example assumes the user must manually define the available network streams and the number of audio channels in each stream differs from the destinations. The user must map the audio channels differently for each network stream group. (Figure 3.3)

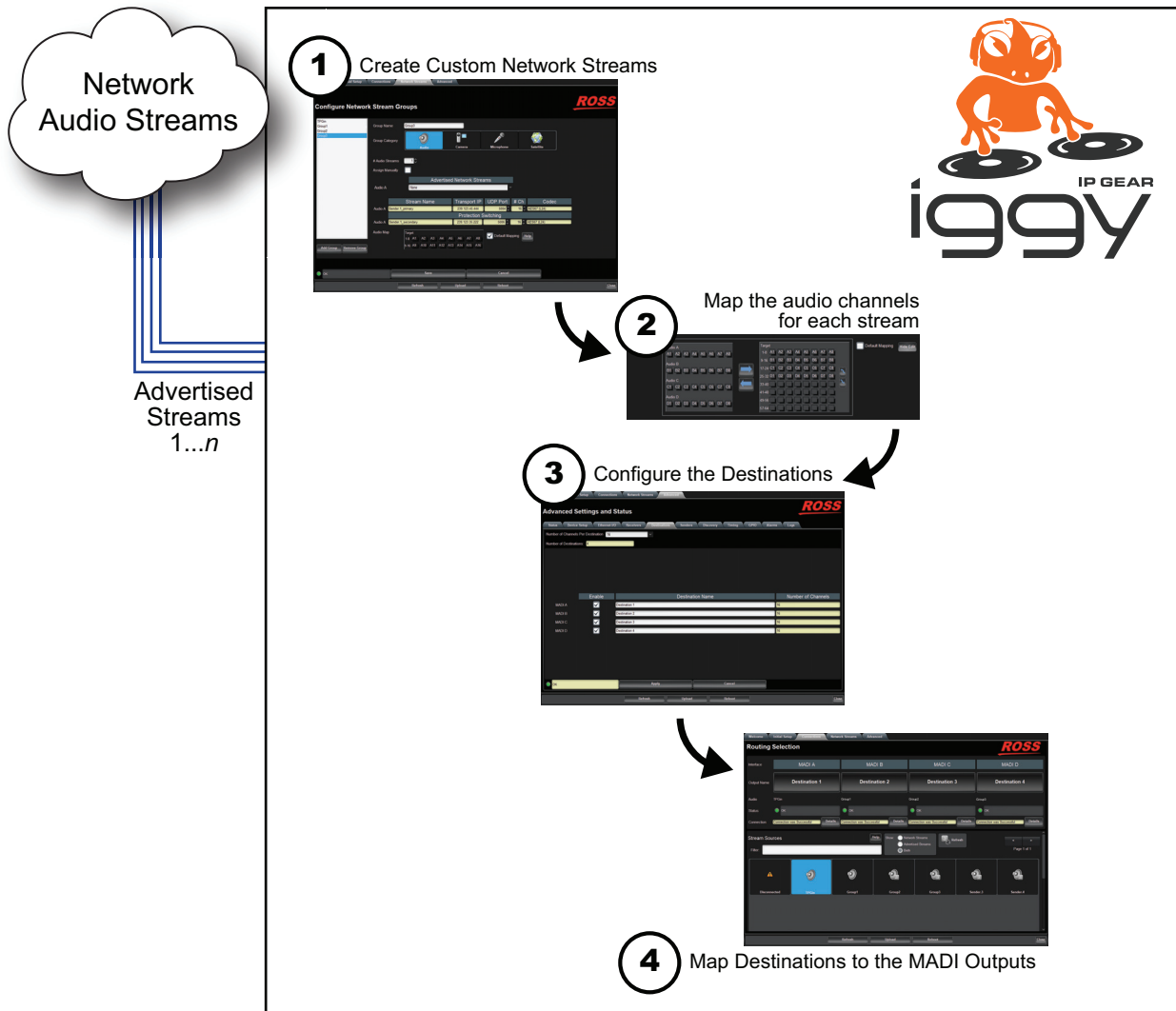


Figure 3.3 Setup Example — Custom Network Streams

### To customize the network streams and audio mapping

1. Manually define the Network Streams Groups for the IGGY-MADI. Refer to “**Manually Assigning a Stream**” on page 60.
2. Map the Audio Channels to each Network Stream Group. Refer to “**Mapping the Audio Channels**” on page 61.
3. Configure the Destinations on the IGGY-MADI. Refer to “**Configuring the Destinations**” on page 53.
4. Map the Destinations to the IGGY-MADI outputs. Refer to “**Routing the Signals**” on page 64.



# Hardware Overview

This chapter presents information on the IGGY-MADI hardware components and features.

## Chassis Faceplate Overview

The chassis faceplate of the IGGY-MADI provides a silk-screen map of the connections and LEDs available. **Figure 4.1** illustrates the IGGY-MADI faceplate top. From the top you can see that the chassis has two areas:

- the power connection, REF BNC, NET ports, and CONTROL port are located on the right side
- the status LEDs, TALLY/GPIO connector, and MADI port are located on the left side

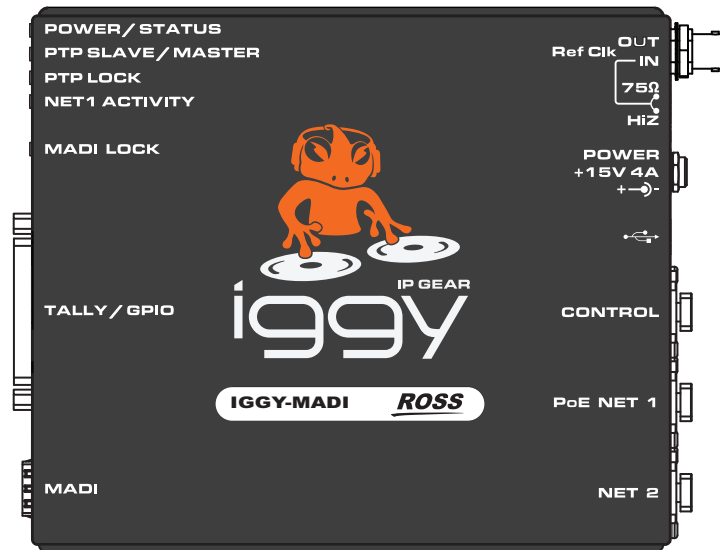


Figure 4.1 IGGY-MADI — Faceplate Components

## PSU Connection and PWR Status LED

The right-side of the IGGY-MADI chassis provides a PSU port. (**Figure 4.2**)

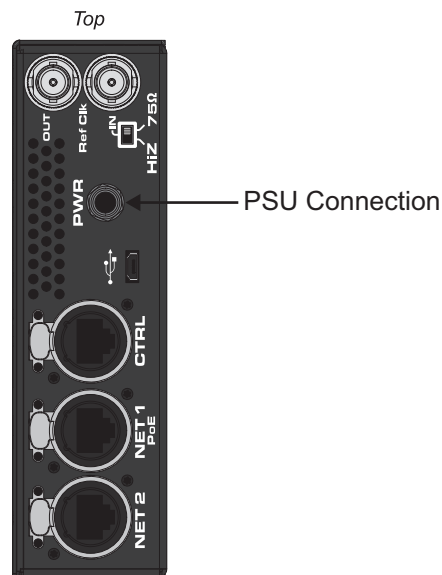


Figure 4.2 IGGY-MADI — PWR Connection

## PWR 15V 4A Connection

The IGGY-MADI can be powered from an external 15V PSU. This port is a standard miniature power jack (center pin positive). Refer to the section “**Connecting to a 15V PSU**” on page 31 for details.

## PWR/STAT LED

A PWR/STAT LED is located on the left side of the IGGY-MADI chassis and reports on general communication and status conditions. (**Figure 4.3**)

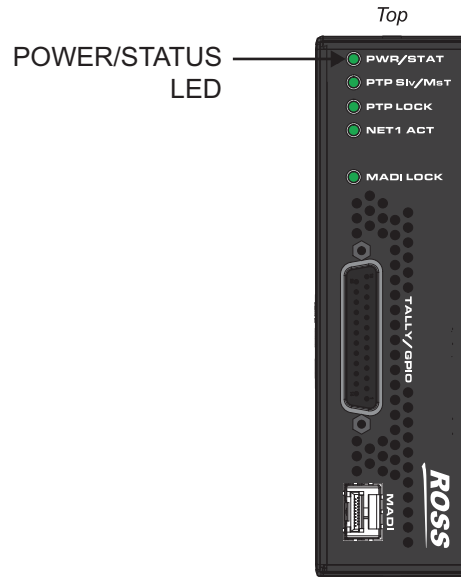


Figure 4.3 IGGY-MADI — POWER/STATUS LED

Table 4.1 describes the possible status information the PWR/STAT LED will report.

Table 4.1 PWR/STATUS LED

Status	Description
Green	When this LED is continually lit green, the IGGY-MADI is receiving +15VDC on the PSU (DC) port of its chassis. No errors are detected in the communication activity between the IGGY-MADI and external devices. The IGGY-MADI is locked to PTP.
Yellow/Green	The IGGY-MADI is initializing.
Red	A communication error is detected or the IGGY-MADI is currently in reboot mode. Monitor the IGGY-MADI status before taking action.
Off	When this LED is unlit, a valid power connection is not connected to the POWER port.

## CONTROL Port

The CONTROL port is a GigE XLR RJ45 port that connects to your facility network. This connection is used to communicate with a DashBoard client for configuration and monitoring purposes.

Connect IGGY-MADI to the same network as your DashBoard client computer or to a network that has a route to the network your DashBoard client computer is on.

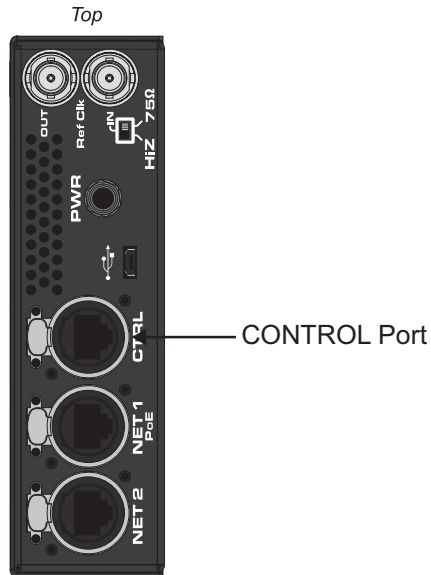


Figure 4.4 IGGY-MADI — CONTROL Port

## NET 1, NET 2 Ports

Each NET port is a GigE XLR RJ45 port. There are options provided for configuring the NET ports as a receiver and/or transmitter.

The NET 1 port is PoE Type 1, Class 3 (802.3af) connector that provides up to 13W of power. The NET 1 port is also the primary audio transport link.

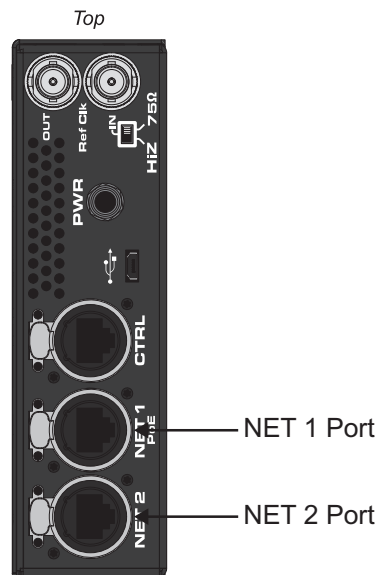


Figure 4.5 IGGY-MADI — NET Ports

## NET 1 ACT LED

The status of the NET 1 signal is reported in DashBoard and via the NET 1 ACT LED. (Figure 4.6)

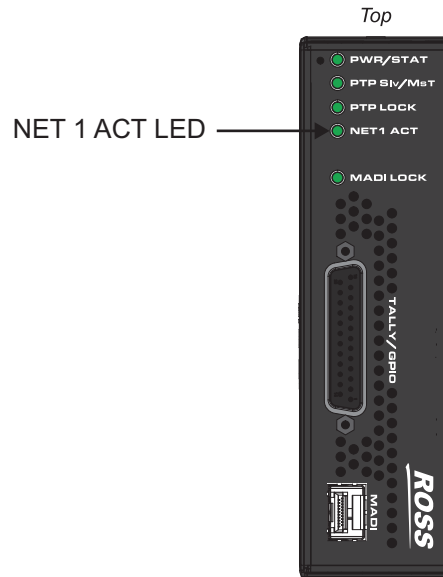


Figure 4.6 IGGY-MADI — NET 1 ACT LED

Table 4.2 describes the possible status information the NET 1 ACT LED will report.

Table 4.2 NET 1 ACT LED

Status	Description
Blue	No errors are detected in the communication activity between the IGGY-MADI and external devices
Off	The IGGY-MADI is not powered on or there is no activity on this port.

## MADI Connection

The MADI port can be populated with Small Form-factor Pluggable (SFP) module that is an LC transceiver. (Figure 4.7)

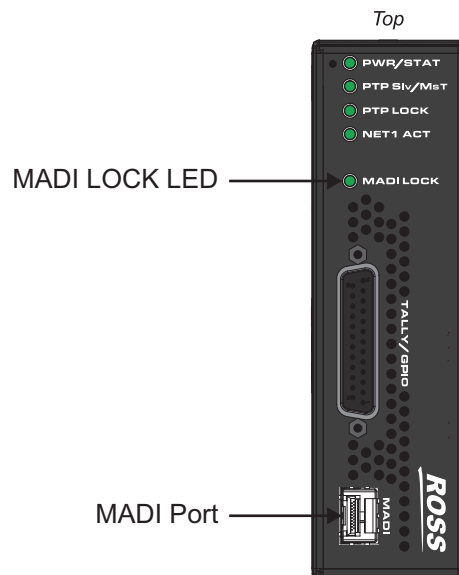


Figure 4.7 IGGY-MADI — MADI Port and LED

## MADI LOCK LED

The status of the MADI input signal is reported in DashBoard and via the MADI LOCK LED. (Figure 4.7) Table 4.3 describes the possible status information the MADI LOCK LED will report.

**Table 4.3 MADI LOCK LED**

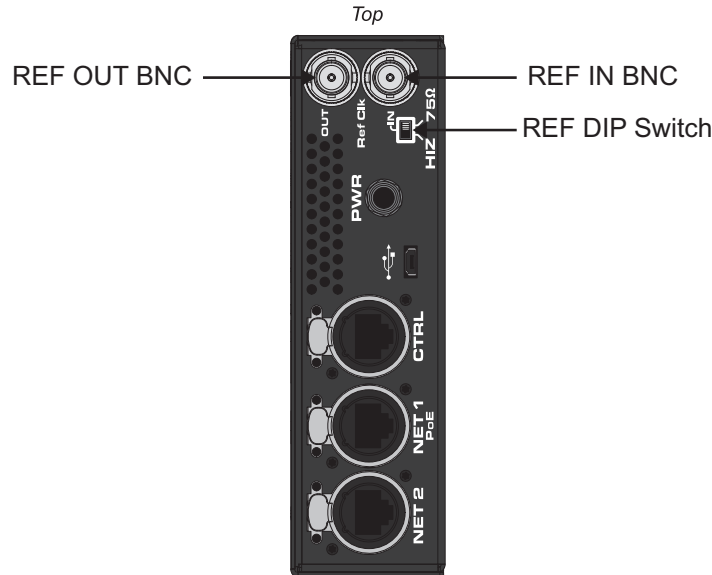
Status	Description
Green	The signal detected on the MADI port is valid and locked
Red	The port is not populated with an SFP module
Off	The IGGY-MADI is not powered on

## Reference Connections

The right-side of the IGGY-MADI chassis also provides two 75ohm BNC connectors (Figure 4.8):

- one BNC for a word clock reference input
- one BNC for a work clock reference output on a 5V TTL signal

Use the DIP Switch to select between high impedance input and a 75ohm termination.



*Figure 4.8 IGGY-MADI — Reference Connections and DIP Switch*

## PTP LEDs Overview

On the left-side of the IGGY-MADI chassis there are two PTP status LEDs enable you to monitor the PTP communication traffic on the IGGY-MADI.

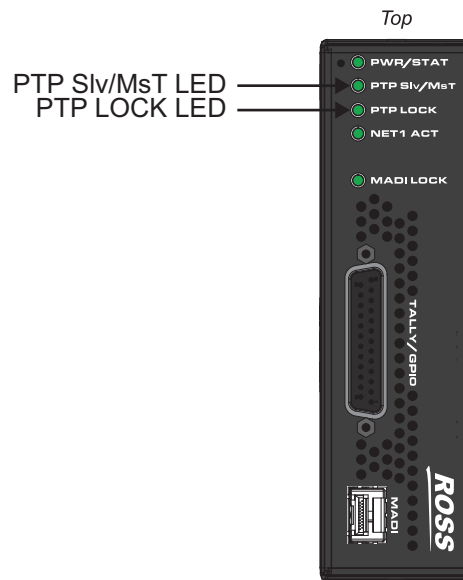


Figure 4.9 IGGY-MADI — PTP Status LEDs

## PTP Slv/Mst LED

Table 4.4 describes the possible status information the PTP Slv/Mst LED will report.

**Table 4.4 PTP Slv/Mst LED**

Status	Description
Green	The IGGY-MADI is communicating with the PTP Grandmaster and PTP is slaving to a Grandmaster
Blue	The IGGY-MADI is acting as the Master on the network
Red	The IGGY-MADI is not configured correctly (is not a PTP slave or master on the network). Verify the network connection and PTP settings.
Off	The IGGY-MADI is not powered on

## PTP LOCK LED

Table 4.5 describes the possible status information the PTP LOCK LED will report.

**Table 4.5 PTP LOCK LED**

Status	Description
Green	The IGGY-MADI is locked to a valid PTP connection
Red	The IGGY-MADI cannot establish a PTP connection and is not locked to a timing reference
Off	The IGGY-MADI is not powered on

## TALLY/GPIO Port

This port is a 25-pin multi-way female connector with 4-40 jack-screws for locking the connector. This port enables the IGGY-MADI to interface with external equipment using the RossTalk protocol. (Figure 4.10)

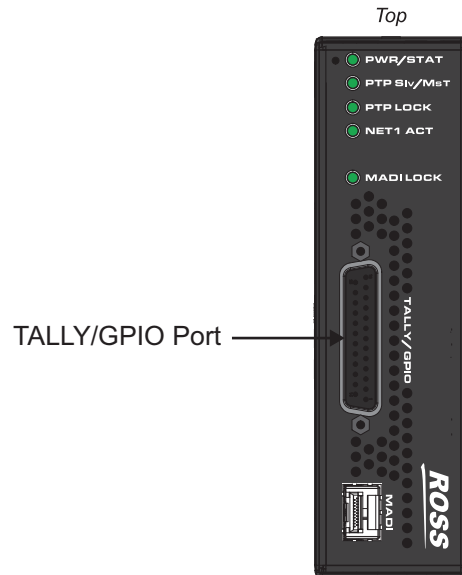


Figure 4.10 IGGY-MADI — Tally/GPIO Port

## Other Features

The left-side of the IGGY-MADI chassis also provides a Reset button and an USB port.

### Reset Button

Press and hold this button for 5 seconds to reset the microprocessor and re-initialize the IGGY-MADI. This is a hard reset of the module settings, including the IP Address, to the factory default values.



Figure 4.11 IGGY-MADI — Reset Button

## USB Port

A serial USB port is provided on the right side of the IGGY-MADI chassis. (**Figure 4.12**)

★ The USB port is not implemented.

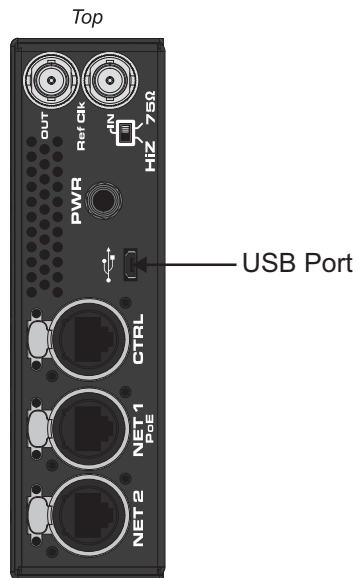


Figure 4.12 IGGY-MADI — USB Port

# Physical Installation

If you have questions pertaining to the installation of IGGY-MADI, contact us at the numbers listed in the section “**Contacting Technical Support**”. Our technical staff is always available for consultation, training, or service.

## For More Information on...

- the technical specifications for the IGGY-MADI, refer to the chapter “**Technical Specifications**” on page 97.

## Static Discharge

Throughout this guide, please heed the following cautionary note:



**ESD Susceptibility** — *Static discharge can cause serious damage to sensitive semiconductor devices. Avoid handling circuit boards in high static environments such as carpeted areas and when synthetic fiber clothing is worn. Always exercise proper grounding precautions when working on circuit boards and related equipment.*

## Working with Fiber Optic Connectors

The IGGY-MADI supports up to two optical Small Form-factor Pluggable (SFP) modules. Keep the following in mind when working with fiber optic connectors:

- Every time you are required to insert a connector into a device or mating sleeve, you must clean the connector. All exposed surfaces of the ceramic ferrule must be clean. Follow your facility practices of cleaning fiber optic connectors.
- Connectors must always be inserted into a device or have a dust cap on.
- A poor optical connection is often similar to a poor electrical connection. Try removing the connector, cleaning, and re-inserting the connector. A bad connection can result in experiencing instability of signal, high loss, or a noisy signal.

## Unpacking

Unpack each IGGY-MADI you received from the shipping container and ensure that all items are included. If any items are missing or damaged, contact your sales representative or Ross Video directly.

## Mounting and Installing the IGGY-MADI

IGGY-MADI can be mounted in any convenient location. However, to ensure long life for this product, observe the following precautions and operating requirements:

- Maintain an ambient temperature of 0°C to 40°C (32°F to 104°F).
- Allow for air circulation around the chassis for convectional cooling.

Many different mounting positions are possible. Some installation options are permanent and require careful consideration of the final positioning before installation.

★ In some mounting locations, the power adapter must be affixed in a similar manner as the chassis.

Cable ties may be necessary in some applications to relieve strain on the mounting hardware and the connectors.

## For More Information on...

- installation and mounting your IGGY-MADI, refer to the *IGGY-MADI Quick Start Guide*.
- how to install the IGGY-MADI with an optional mounting kit, refer to the install guide that shipped with your kit.



# Cabling

If you have questions pertaining to the setup of IGGY-MADI, contact us at the numbers listed in the section “**Contacting Technical Support**”. Our technical staff is always available for consultation, training, or service.

## For More Information on...

- the technical specifications for the IGGY-MADI, refer to the chapter “**Technical Specifications**” on page 97.
- notices to service personnel, refer to the document *IGGY-MADI Important Regulatory and Safety Notices* that shipped with your IGGY-MADI.

## Before You Begin

Keep the following in mind before cabling the IGGY-MADI:

- Contact your IT department before connecting to your facility network to ensure that there are no conflicts. They will provide you with an appropriate value for the IP Address, Subnet Mask, and Gateway for your device.
- If difficulties or problems are experienced when connecting the IGGY-MADI to a network hub, contact your network administrator.

## Connecting to a 15V PSU

The IGGY-MADI is shipped with an external power supply. The DC Power cord has a locking connector that securely fastens into the PWR DC jack on the IGGY-MADI chassis.



**Warning** — *The power supply connector of the IGGY-MADI power supply module must be fully inserted into the IGGY-MADI PWR port and the locking collar fully secured before use. Failure to do so may damage the PWR port on the IGGY-MADI chassis.*



**Caution** — *Ensure to connect the DC Power cord of the power supply to the PWR jack on the IGGY-MADI before connecting the power supply to the power source.*



**Caution** — *Use of improper adapters may damage the IGGY-MADI and will void the warranty.*

## Cabling the NET Ports

The primary function of each NET port is to provide a network interface that can be configured as a Receiver and/or a Sender in Dashboard. Use the NET 1 port if you choose to power the IGGY-MADI with an optional PoE connection to your network.

### Cabling NET 1 as a PoE Connection

If you wish to power the IGGY-MADI via a PoE connection to your facility network, you will need an RJ45 PoE connector. You may also wish to use a cable with a push-pull locking connector for connection to the NET 1 port on the IGGY-MADI chassis.

★ Ross Video does not supply this cable.

### Connecting the NET Ports to a Network

You will need an Ethernet cable with a standard RJ45 connector for each NET port.

## Cabling the CONTROL Port

The IGGY-MADI is connected directly to your network so that it can interface with the devices and the computer running the DashBoard client. After a physical connection is established via the CONTROL port, DashBoard is used to configure the network settings for the IGGY-MADI.

The exact steps for connecting your IGGY-MADI to your facility via an Ethernet network depend on the network requirements of your facility.

## Cabling the MADI Port



**Caution** — *Never attempt to look down the barrel of a connected fiber or device transmitting an optical signal. The transmitted light is not in the visible spectrum and may cause permanent eye damage. Turn off all laser sources before disconnecting devices.*

### To cable the MADI port



**Caution** — *Every time you are required to insert a connector into a device or mating sleeve, you must clean the connector. All exposed surfaces of the ceramic ferrule must be clean. Follow your facility practices of cleaning fiber optic connectors. Connectors must always be inserted into a device or have a dust cap on.*

1. Remove the dust caps from the MADI port connector on the IGGY-MADI chassis.
- ★ Refer to the document *IGGY-MADI Important Regulatory and Safety Notices* that shipped with your module, for safety information when handling fiber optic components.
2. Ensure that the exposed surface of the ceramic ferrule of each connector is clean. Refer to the section “Working with Fiber Optic Connectors” on page 29 for cleaning tips.
3. Cable your MADI module as required. (Figure 6.1)

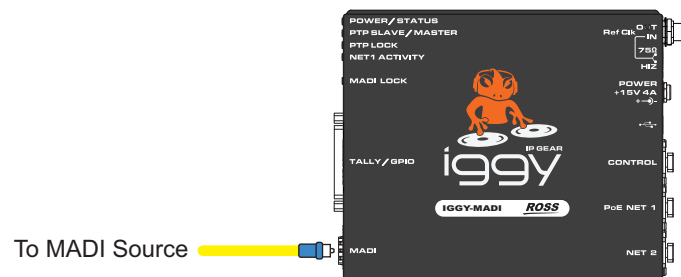


Figure 6.1 IGGY-MADI — MADI Port Connections

## Cabling the Reference Ports

The IGGY-MADI provides two reference BNCs: a REF OUT and a REF IN.

### Connecting a Reference Source to the IGGY-MADI

Use the REF IN BNC if you wish to use a local SDI reference input signal for the IGGY-MADI timing. This signal must be a 48kHz word clock signal. You will also need to configure the DIP Switch on the IGGY-MADI.

#### To connect the IGGY-MADI to an SDI reference source

1. Connect one end of a Belden 1694A cable with a female BNC to the REF IN BNC on the IGGY-MADI chassis.
2. Connect the other end of the same Belden 1694A to the reference source for the IGGY-MADI.

3. Configure the DIP Switch on the IGGY-MADI as follows:

- 75Ω — Select this position if you are using a point-to-point cabling or the reference input signal is 75ohm. The reference is terminated with an 75ohm resistor.
- Hi-Z — Select this position if the reference input signal is high-impedance.



Figure 6.2 IGGY-MADI Cabling — DIP Switch

### Cabling the Reference Output

Use the REF OUT BNC if you wish the IGGY-MADI to output either a 44.1kHz, or 48kHz work clock signal synchronized to PTP. This reference can be used by external devices.

#### For More Information on...

- on specifying the **Audio Sampling Frequency**, refer to “**Configuring the Device Settings**” on page 38.

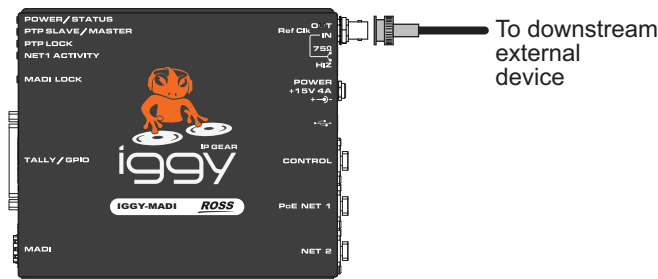


Figure 6.3 IGGY-MADI Cabling — REF OUT

### Connecting an External Device to the TALLY/GPIO Port

The IGGY-MADI can interface with external equipment over the TALLY/GPIO port. Each pin is controllable using the options on the **Advanced > GPIO** tab in DashBoard.

The TALLY/GPIO connector requires a male 25-pin DC sub-miniature connector with 4-40 jack-screws for mating connector locking. (**Figure 6.4**)

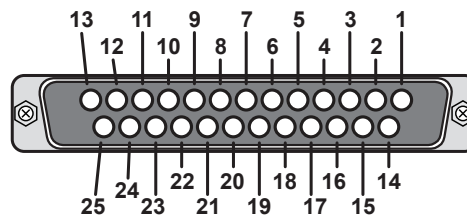


Figure 6.4 TALLY/GPIO Port — Pin-out Designations

### GPIO Pin Designations

**Table 6.1** outlines the pin assignment for the eight GPIOs.

**Table 6.1 Pins — GPIO**

<b>GPIO</b>	<b>Pin on TALLY/GPIO Port</b>
<b>1</b>	7
<b>2</b>	20
<b>3</b>	8
<b>4</b>	21
<b>5</b>	9
<b>6</b>	22
<b>7</b>	10
<b>8</b>	23

### Tally Pin Designations

**Table 6.2** outlines the pin-out assignment for the four tallies.

**Table 6.2 Pins — Tallies**

<b>Tally</b>	<b>Pin on TALLY/GPIO Port</b>
<b>1A</b>	1
<b>1B</b>	14
<b>2A</b>	2
<b>2B</b>	15
<b>3A</b>	3
<b>3B</b>	16
<b>4A</b>	4
<b>4B</b>	17

# Getting Started

This chapter provides instructions for launching DashBoard, assigning an initial IP address to the IGGY-MADI, and accessing the tabs and menus in DashBoard.

## Before You Begin

These installation guidelines assume the following:

- a valid IPV4 address is available for the IGGY-MADI
  - a PTP Grandmaster is configured and accessible for the IGGY-MADI
  - a network switch is configured in Boundary Clock mode and available for communicating with the IGGY-MADI
- ★ Ensure that your facility IT Department provided the required network settings to be assigned to the IGGY-MADI and each NET port you plan to enable.

## Configuration Overview

Figure 7.1 summarizes the generalized work flow of configuring your IGGY-MADI.

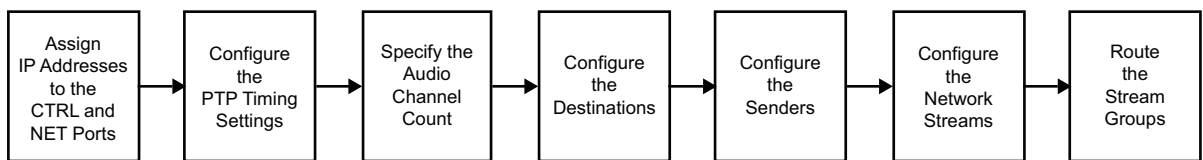


Figure 7.1 Process for Configuring a IGGY-MADI

## Launching DashBoard

- ★ DashBoard must run on a computer that has a physical wired Ethernet connection directly to the IGGY-MADI and configured with an IP address in the same range as the default address of the IGGY-MADI (192.168.0.100).

### For More Information on...

- downloading and installing the DashBoard client software, refer to the *DashBoard User Manual*.
- the IGGY-MADI interfaces in DashBoard, refer to the chapter “**DashBoard Interface Overview**” on page 71.

### To launch DashBoard

1. Ensure that you are running DashBoard software version 8.4.0 or higher.
2. Launch DashBoard by double-clicking its icon on your computer desktop.

## Using Walkabout to Assign the Initial IP Address to IGGY-MADI

Once the IGGY-MADI is physically installed and cabled to your facility network, you will need to assign it an initial static IP Address to enable DashBoard to locate it on your network. Establishing an initial IP Address enables DashBoard to communicate with IGGY-MADI.

### To use Walkabout to assign the initial static IP address to the IGGY-MADI

1. Launch DashBoard.
2. From the DashBoard client main toolbar, select **File > Show Walkabout**.

The DashBoard window displays the **Walkabout** table.

3. Click **Refresh**, located at the bottom of the Walkabout tab, to ensure the list in the Walkabout interface is current.

4. In the **Walkabout** table, find the entries for the IGGY-MADI you want to configure.
- ★ Each IGGY-MADI has three entries in the table: CTRL, NET 1, and NET 2. These are the physical ports on the IGGY-MADI chassis. You need only assign an IP Address to the CTRL port for initial setup of the IGGY-MADI.
5. Use the **Name** field to assign a unique identifier to the IGGY-MADI. This will be the name displayed in the Tree View of DashBoard.
6. Use the **Address** field to specify the IP Address supplied by your IT Department for this device.
- ★ After you edit a cell in the **Walkabout** table, it is recommended to wait approximately 1 minute, then click **Refresh** to apply the new settings.
7. Ensure the **Netmask** field is set to match your network requirements.
8. Use the **Gateway** field to specify the IP Address for connection outside of the local area network (LAN).
9. Click **Reboot** in the row of the **Walkabout** table for the IGGY-MADI.

## Manually Adding the IGGY-MADI to the Tree View

The IGGY-MADI does not automatically display the DashBoard Tree View. You must manually add it to the Tree View.

### To manually add the IGGY-MADI to the Tree View in DashBoard

1. From the main toolbar in DashBoard, select **File > New > TCP/IP DashBoard Connect or openGear Device**. The **New TCP openGear Frame Connection** dialog opens.

2. In the **IP Address** field, enter the IP Address that you specified in the procedure “**To use Walkabout to assign the initial static IP address to the IGGY-MADI**” on page 35.
3. Enter a unique identifier for the IGGY-MADI in the **Display Name** field or click **Detect Frame Information**.
- ★ This is the name displayed in the DashBoard Tree View.
4. Click **Finish** to close the dialog.
5. Verify that the IGGY-MADI node displays in the DashBoard Tree View.
6. Right-click the **IGGY** node (with the name assigned in step 3) in the Tree View. A dialog opens.
7. Select **Open** from the dialog. The IGGY-MADI interface displays in DashBoard with the **Welcome** tab automatically selected.



## Using the IGGY Setup Wizard

The **IGGY Setup Wizard** is displayed when the **Initial Setup** tab is selected in Dashboard.

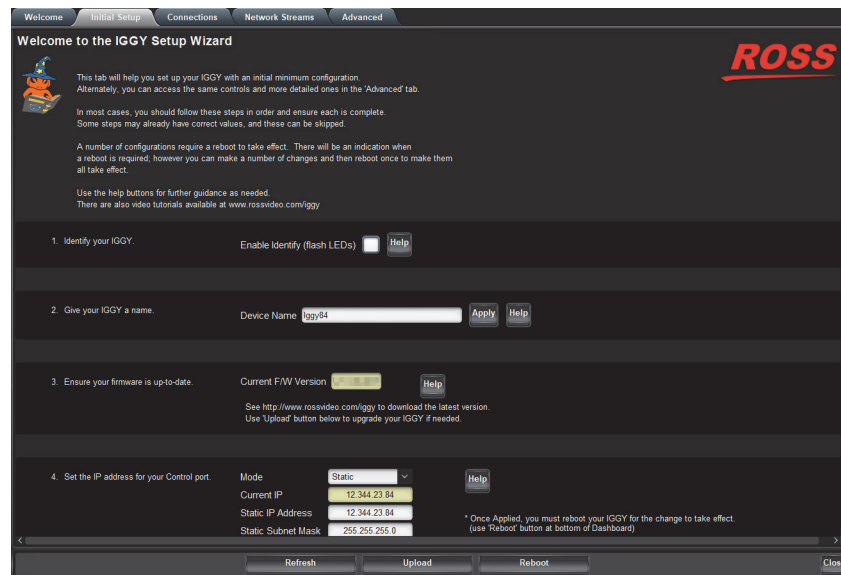


Figure 7.2 Example of the Initial Setup Tab

Use the **IGGY Setup Wizard** to configure the following settings (further described in the proceeding chapters):

- Specifying the device name
- IP Address for the CONTROL port and each NET port
- PTP Timing System
- Audio Packet Time
- Default number of audio channels per stream
- Destination channel mapping
- Default Audio Codec
- Sender Sources

## Accessing the IGGY-MADI in DashBoard

The IGGY-MADI groups the configuration, monitoring, and operating features as a series of tabs in the DashBoard client window. Each tab provides access to specific configuration options for your IGGY-MADI.

The tabs are accessed by double-clicking the IGGY-MADI node in the DashBoard Tree View. This procedure assumes that you have launched DashBoard on your computer and a valid IP Address assigned to the IGGY-MADI.

### To access the IGGY-MADI in DashBoard

1. In the Basic Tree View of DashBoard, expand the top IGGY node.
2. Expand the **IGGY** sub-node.
3. Double-click the second **IGGY** sub-node to display the IGGY-MADI interface in the right pane of the DashBoard window.

When first accessing the IGGY-MADI, the **Welcome** tab is automatically displayed in DashBoard.

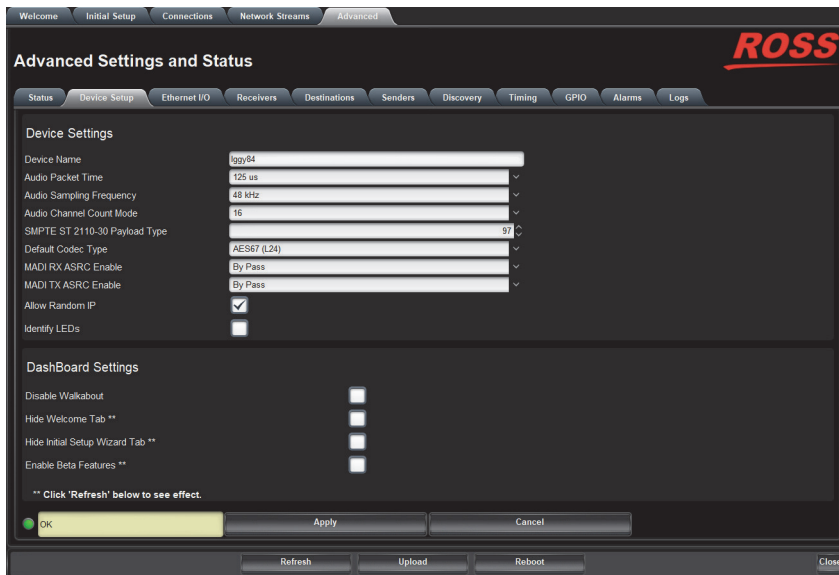
★ Once the initial settings are configured and applied to the IGGY-MADI, you can hide the Welcome and Initial Setup tabs by selecting **Advanced > Device Setup > Hide Welcome Tab** and/or **Hide Initial Setup Wizard Tab**.

## Configuring the Device Settings

It is recommended to edit the global device settings such as setting the audio packet time, the number of audio channels that each menu defaults to.

### To update the global device settings for the IGGY-MADI

1. Display the IGGY-MADI in DashBoard as outlined in the procedure “**To access the IGGY-MADI in DashBoard**” on page 38.
2. Select the **Advanced > Device Setup** tab.



3. Use the **Device Name** field to assign a unique identifier to your IGGY-MADI.

★ This is the name used to identify the streams the IGGY-MADI is managing within your system.

4. Use the **Audio Packet Time** field to specify the amount of digital audio that is buffered and encapsulated into a single Ethernet packetized frame on a Sender. Note that a longer packet time increases the latency of the audio stream.

- ★ When setting up a receiver stream on the IGGY-MADI, ensure that you configure a receiver to match the audio packet time of the sender.
- ★ This impacts all connected audio streams. Applying a new Audio Packet Time automatically disconnects all audio streams. It is recommended to set the Audio Packet Time before configuring your audio streams.
- 5. Use the **Audio Sampling Frequency** to specify the number of samples of audio carried per second.
- 6. Use the **SMPTE ST 2210-30 Payload Type** field to specify the RTP payload format to be used for transporting audio via SMPTE ST 2110-30.
- 7. Use the **Default Codec Type** menu to specify the audio compression format.
- 8. Select the **Allow Random IP** box to avoid having to manually set a multicast IP address when creating IGGY-MADI senders.
- ★ If the **Allow Random IP** box is not selected (this is the default setting), you will need to manually set the multicast IP addresses for senders created in the Senders tab.
- 9. Click **Apply** to save the new settings.

## Setting the Audio Channel Count Mode

The Audio Channel Count feature is useful when all the audio network streams in your network have the same channel count. You select from a preset number (1, 2, 8, or 16) that matches your network configuration. This number is then used to determine the appropriate defaults to apply when setting up your streams and essences.

- ★ Select Mixed mode if your audio network streams do not have a consistent channel count.

### To set the audio channel count mode

1. Display the IGGY-MADI interfaces in DashBoard as outlined in the procedure “**To access the IGGY-MADI in DashBoard**” on page 38.
  2. Select the **Advanced > Device Setup** tab.
  3. Use the **Audio Channel Count Mode** field to specify the maximum number of audio channels available for each stream.
- ★ This field assumes that all audio streams in your network contain the specified number of channels. This automatically determines the maximum channel count of each network stream for the Receivers, and Senders tabs. Note that the size of the Destination stream is specified independently via the options on the **Advanced > Destinations** tab.



# Configuring the Ethernet Settings

The IGGY-MADI provides two NET ports that are populated with Ethernet RJ45 connectors. The chassis also provides a third Ethernet RJ45 (CONTROL) port that is used to connect to your facility network for DashBoard communication. This chapter outlines how to configure each of these ports.

★ Contact your network administrator if difficulties or problems are experienced when assigning IP addresses.

## For More Information on...

- the location of the NET ports, refer to the section “NET 1, NET 2 Ports” on page 23.
- the location of the CONTROL port, refer to the section “CONTROL Port” on page 23.

## Configuring the CONTROL Port

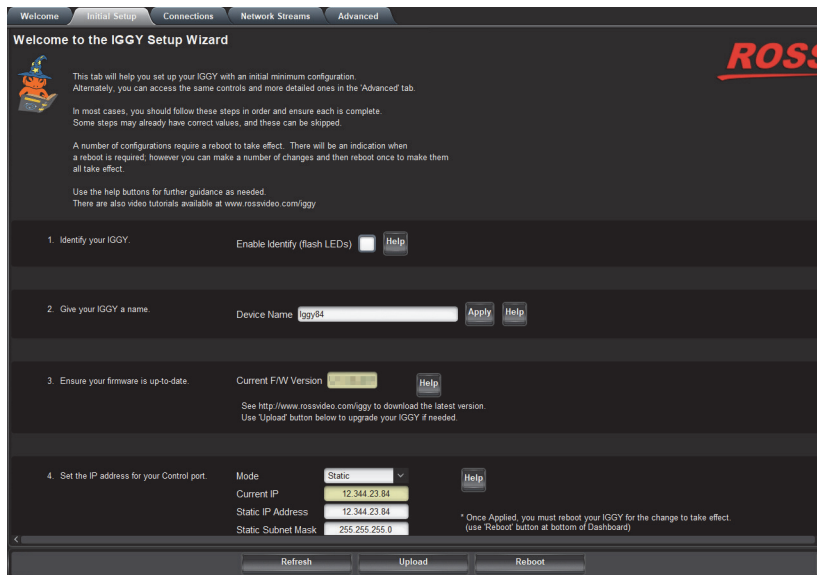
The CONTROL port is located on the right side of the IGGY-MADI chassis. Once the IGGY-MADI is communicating via DashBoard, you may wish to assign a different static IP Address from the factory default value (which was used to initially establish a connection point to the IGGY-MADI).

★ The IGGY-MADI ships with the default IP Address of 192.168.0.100. You may wish to change the IP Address from the factory default after you establish this initial connection.

## To update the static network settings for the CONTROL port

1. Display the IGGY-MADI interfaces in DashBoard as outlined in the procedure “To access the IGGY-MADI in DashBoard” on page 38.
2. Select the **Initial Setup** tab.

★ You can also change these settings via the **Advanced > Ethernet I/O** tab.



The screenshot shows the 'Initial Setup' tab of the IGGY Setup Wizard. The interface is dark-themed with a 'ROSS' logo in the top right. The current step is '4. Set the IP address for your Control port.' The 'Mode' dropdown is set to 'Static'. The 'Current IP' is 12.344.23.84. The 'Static IP Address' is 12.344.23.84. The 'Static Subnet Mask' is 255.255.255.0. There are 'Refresh', 'Upload', and 'Reboot' buttons at the bottom. A note at the bottom right states: '\* Once Applied, you must reboot your IGGY for the change to take effect. (use "Reboot" button at bottom of Dashboard)'. The previous steps are: 1. Identify your IGGY (Enable Identify flash LEDs checkbox), 2. Give your IGGY a name (Device Name: iggy84), and 3. Ensure your firmware is up-to-date (Current F/W Version: 1.0.0).

3. Locate the menus for the CONTROL port (step 3 on the tab).

4. Use the **Mode** menu to select **Static**.

★ If you want the network settings for the CONTROL port to be automatically obtained, and DHCP service is available on your control network, select **DHCP** from the **Mode** menu.

5. Use the **Static IP Address** field to assign a unique IP Address to the IGGY-MADI.

6. Use the **Subnet Mask** field to assign the subnet mask for the IGGY-MADI.
  7. Use the **Gateway** field to specify the gateway for communications outside of the local area network (LAN) the IGGY-MADI will use.
  8. Click **Apply**.
  9. Click **Reboot** to apply the new settings. This button is located at the bottom of the interface.
- ★ The IGGY-MADI is temporarily taken off-line during the reboot.
10. Verify the new network settings reported on the **Advanced > Ethernet I/O** tab.
  11. Add the IGGY-MADI to the DashBoard Tree View using the new settings. Refer to the section “**Manually Adding the IGGY-MADI to the Tree View**” on page 36.

## Configuring the NET Ports

By assigning an IP Address to each NET port (NET 1, NET 2), you are able to uniquely identify it on the network and control it via DashBoard. Each NET port can be configured for media traffic for the IGGY-MADI.

This section outlines how to configure the network settings for the NET ports on the chassis.

### To update the network settings for a NET port

1. Display the IGGY-MADI interfaces in DashBoard as outlined in the procedure “**To access the IGGY-MADI in DashBoard**” on page 38.
  2. Select the **Initial Setup** tab.
- ★ You can also change these settings via the **Advanced > Ethernet I/O** tab.
3. Locate the options for the NET port you wish to configure (step 4 on the tab).
  4. If you are manually configuring the Ethernet settings:
    - a. Use the **Mode** menu to select **Static**.
    - b. Use the **Static IP Address** field to specify the new static IP Address for the IGGY-MADI. This is the IP Address that is used to control and communicate with the specific NET port.
    - c. Use the **Subnet Mask** field to specify the subnet mask for the NET port.
    - d. Use the **Gateway** field to specify the gateway for communications outside of the local area network (LAN) the IGGY-MADI will use.
  5. If you want the network settings for the NET port to be automatically obtained, and DHCP service is available on your control network, select **DHCP** from the **Mode** menu.
  6. Click **Apply** to save the new settings.
  7. Repeat this procedure for the second NET port you wish to configure.
  8. Click **Reboot** to apply the new settings. This button is located at the bottom of the interface.

The IGGY-MADI is temporarily taken off-line during the reboot.
  9. Verify the new settings reported on the **Advanced > Ethernet I/O** tab.

# Protocol Setup

This chapter outlines how to specify which outputs to enable on the IGGY-MADI, and configure the IGGY-MADI for a specific media distribution protocol.

## Registration and Discovery

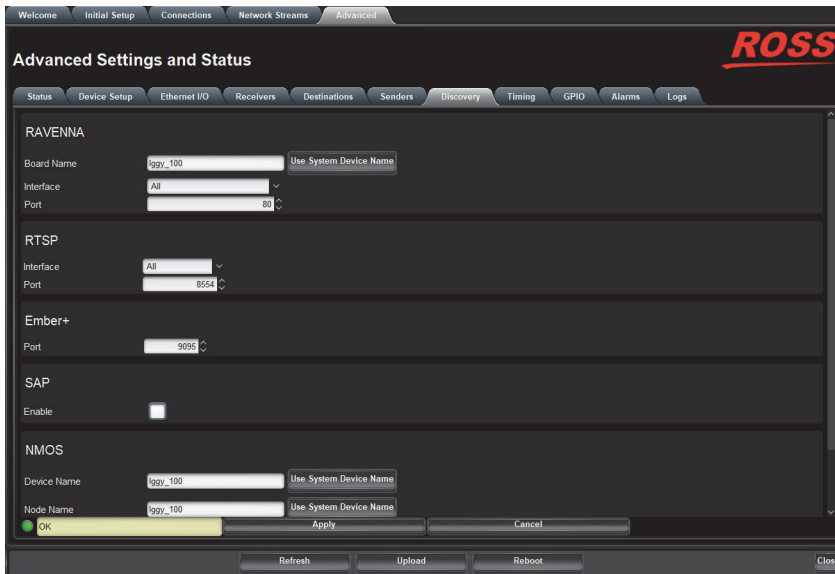
The IGGY-MADI supports media distribution based on RAVENNA, RTSP, NMOS, and Ember+. This section outlines how to configure the IGGY-MADI for each protocol.

### RAVENNA Support

This section outlines how to configure the IGGY-MADI for the open standard for real-time media over IP (AES67).

#### To configure the IGGY-MADI as a RAVENNA device

1. Display the IGGY-MADI interfaces in DashBoard as outlined in the procedure “**To access the IGGY-MADI in DashBoard**” on page 38.
2. Select **Advanced > Discovery** tab.



3. Locate the **RAVENNA** area in the tab.
4. To re-name the IGGY-MADI for the RAVENNA network, perform one of the following:
  - Use the **Board Name** menu to specify a unique identifier for the IGGY-MADI in the RAVENNA network or
  - Click **Use System Device Name**.
5. Use the **Interface** menu to specify what physical port the IGGY-MADI uses for RAVENNA communications.
6. Use the **Port** menu to specify the port assigned to the IGGY-MADI within the RAVENNA network.
7. Click **Apply** to save the new settings.

### RTSP Support

This section outlines the required settings when establishing communications between IGGY-MADI and an external device via the Real Time Streaming Protocol (RTSP).

## To configure the IGGY-MADI as a RTSP device

1. Display the IGGY-MADI interfaces outlined in “To access the IGGY-MADI in DashBoard” on page 38.
2. Select **Advanced > Discovery** tab.
3. Locate the **RTSP** area in the tab.
4. Use the **Interface** menu to specify what physical port the IGGY-MADI uses for RTSP communications.
5. Use the **Port** field to specify the TCP port the protocol uses to send and receive messages.
6. Click **Apply** to save the new settings.

## Ember+ Support

★ IGGY-MADI implements BESS v1.1 for Ember+ support to communicate with third-party controllers.

Keep the following in mind when setting up an Ember+ connection with IGGY-MADI:

- Ensure that all network streams have a consistent channel count.
- Audio shuffling is not supported in Ember+ setups.
- IGGY-MADI supports one-to-many connection (where one source can be routed to multiple targets).

### Channel Mapping for Ember+

Channels in the network stream are mapped to the corresponding MADI channels in the Ember+ client in a 1-to-1 mapping.

In each channel count mode, the Sender configuration must first be created in DashBoard to show up in the Ember+ tree. If a Sender has not been set up through DashBoard for one of these sets of channels then these Audio sub-groups will contain no SDP file. If a Sender is created without following the channel mapping configuration above, the Ember+ tree contents will not be correct.

### 16-channel Count Mode

If the channel count mode is set to **16**, there are 4 audio sub-groups (Audio 1-4) with 16 channels each. (**Figure 9.1**)

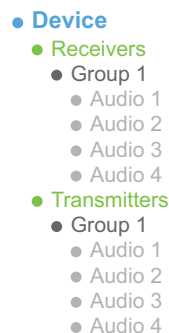


Figure 9.1 Ember+ Tree Example — Channel Count Mode set to 16

In **Figure 9.1**, the Receivers > Group 1 > Audio 1 represents the receiver that maps to MADI channels 1 to 16; Receivers > Group 1 > Audio 2 represents the receiver that maps to MADI channels 17 to 32; etc. When connecting a 16-channel network stream to one of these targets, the 16 channels from the network stream will be mapped to the corresponding MADI channels in a 1-to-1 mapping.

In **Figure 9.1**, the Transmitters > Group 1 > Audio 1 represents the sender that maps to MADI channels 1 to 16; Audio 2 maps to the sender that maps to MADI channels 17 to 32; etc.

### 8-channel Count Mode

If channel count mode is set to **8**, there are 8 audio sub-groups (Audio 1-8) with 8 channels each. (**Figure 9.2**)

- Device
  - Receivers
    - Group 1
      - Audio 1
      - Audio 2
      - Audio 3
      - Audio 4
      - Audio 5
      - Audio 6
      - Audio 7
      - Audio 8
  - Transmitters
    - Group 1
      - Audio 1
      - Audio 2
      - Audio 3
      - Audio 4
      - Audio 5
      - Audio 6
      - Audio 7
      - Audio 8

Figure 9.2 Ember+ Tree Example — Channel Count Mode set to 8

In **Figure 9.2**, the Receivers > Group 1 > Audio 1 represents the receiver that maps to MADi channels 1 to 8; Receivers > Group 1 > Audio 2 represents the receiver that maps to MADi channels 9 to 16; etc. When connecting an 8-channel network stream to one of these targets, the 8 channels from the network stream will be mapped to the corresponding MADi channels in a 1-to-1 mapping.

In **Figure 9.2**, the Transmitters > Group 1 > Audio 1 represents the sender that maps to MADi channels 1 to 8; Audio 2 maps to the sender that maps to MADi channels 9 to 16; etc.

### 2-channel Count Mode

If channel count mode is set to **2**, there are 32 audio sub-groups (Audio 1-32) with 2 channels each. (**Figure 9.3**)

- Device
  - Receivers
    - Group 1
      - Audio 1
      - Audio 2
      - Audio 3
      - Audio 4
      - ...
      - Audio 30
      - Audio 31
      - Audio 32
  - Transmitters
    - Group 1
      - Audio 1
      - Audio 2
      - Audio 3
      - Audio 4
      - ...
      - Audio 30
      - Audio 31
      - Audio 32

Figure 9.3 Ember+ Tree Example — Channel Count Mode set to 2

In **Figure 9.3**, the Receivers > Group 1 > Audio 1 represents the receiver that maps to MADi channels 1 and 2; Receivers > Group 1 > Audio 2 represents the receiver that maps to MADi channels 3 and 4; etc. When connecting a 2-channel network stream to one of these targets, the 2 channels from the network stream will be mapped to the corresponding MADi channels in a 1-to-1 mapping.

In **Figure 9.3**, the Transmitters > Group 1 > Audio 1 represents the sender that maps to MADi channels 1 and 2; Audio 2 maps to the sender that maps to MADi channels 3 and 4; etc.

## 1-channel Count Mode

If channel count mode is set to **1**, there are 64 audio sub-groups (Audio 1-64) with 1 channel each. (**Figure 9.4**)

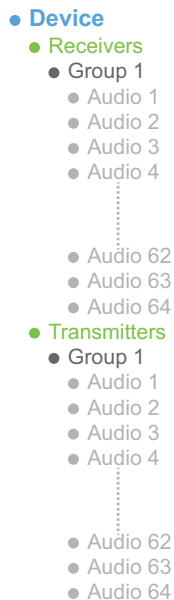


Figure 9.4 Ember+ Tree Example — Channel Count Mode set to 1

In **Figure 9.4**, the Receivers > Group 1 > Audio 1 represents the receiver that maps to MAD I channel 1; Receivers > Group 1 > Audio 2 represents the receiver that maps to MAD I channel 2; etc. When connecting a 1-channel network stream to one of these targets, the channel from the network stream will be mapped to the corresponding MAD I channel in a 1-to-1 mapping.

In **Figure 9.4**, the Transmitters > Group 1 > Audio 1 represents the sender that maps to MAD I channel 1; Audio 2 maps to the sender that maps to MAD I channel 2; etc.

### Establishing a Connection

★ Before proceeding, ensure that SDP patching is enabled with the Ember+ client to establish audio receivers on the IGGY-MADI.

#### To establish a connection between the Ember+ client and the IGGY-MADI

1. Add the IGGY-MADI in the Ember+ client interface using the IP Address assigned to the IGGY-MADI.
2. In Dashboard:
  - a. Navigate to IGGY-MADI **Advanced** > **Discovery** tab.
  - b. Locate the **Ember+** area in the tab.
  - c. Set the **Port** field to 9095.
3. In the Ember+ client, set the TCP port to 9095 for the IGGY-MADI.

### Specifying the Audio Channel Count Mode on the IGGY-MADI

By default, the Channel Count mode is set to 8 but this value can be edited in Dashboard.

★ You will need to reboot the IGGY-MADI before the Ember+ tree is updated with the new Channel Count mode.

#### To set the Audio Channel Count mode on the IGGY-MADI

1. In Dashboard, navigate to the **Advanced** > **Device Setup** tab.
2. Use the **Audio Channel Count Mode** menu to specify the number of channels in each group.

3. Click **Apply**.

### Configuring the IGGY-MADI for Ember+

For most setups (as seen in “**Direct Audio Mapping**” on page 17), you will only need to create the Senders in DashBoard for the IGGY-MADI. Refer to the section “**Configuring the Senders**” on page 55 for details.

For other setup types, (as seen in “**One-to-Many Direct Audio Mapping**” on page 18 and “**Custom Network Streams**” on page 19), you will need to configure the Senders, and then use the Ember+ controller interface (e.g. Lawo VSM) to map the sources to the targets. Refer to the documentation that came with your controller for details.

## NMOS Support

This section outlines the required settings on the IGGY-MADI to establish communications via the Network Media Open Specifications (NMOS).

### To configure the IGGY-MADI as a NMOS device

1. Display the IGGY-MADI interfaces in DashBoard as outlined in the procedure “**To access the IGGY-MADI in DashBoard**” on page 38.
2. Select **Advanced > Discovery** tab.
3. Locate the **NMOS** area in the tab.
4. To assign a name to the IGGY-MADI for use in the NMOS network, perform one of the following:
  - Use the **Device Name** menu to specify a unique identifier for the IGGY-MADI in the NMOS network; or
  - Click **Use System Device Name**.
5. Use the **Interface** menu to specify what physical port the IGGY-MADI uses for NMOS communications.
6. Use the **SDP Port** field to specify the SDP HTTP port used to GET SDPS.
7. Select the **Enable** box.
8. Click **Apply** to save the new settings.



# Configuring the Timing Settings

The IGGY-MADI supports the Precision Time Protocol (PTP) as defined in the IEEE 1588-2008 standard and the SMPTE ST 2059 specification.

## Configuring the PTP Settings

From the Timing tab in DashBoard, you can synchronize the IGGY-MADI to real-time clocks of other devices in the same network.

- ★ There are several criteria that PTP clocks compare to determine who will be master and who will be slave (called the Best Master Clock Algorithm, or BMCA), and they are evaluated in order: Priority1, clock class, accuracy, scaled log variance, Priority2, clock ID (similar to the MAC address). Practically, Priority1 is the only setting configured on all clocks to control the outcome of the Grandmaster election. If Priority1s are equal, the next criterion is evaluated (clock class) and the criteria are evaluated in succession until a Grandmaster is determined.

### To update the PTP settings for the IGGY-MADI

1. Display the IGGY-MADI interfaces in DashBoard as outlined in the procedure “**To access the IGGY-MADI in DashBoard**” on page 38.
  2. Select the **Initial Setup** tab.
- ★ You can also change these settings via the **Advanced > Timing > PTP**.
3. Select the **Slave Only** box to define the IGGY-MADI as only a slave and never a Boundary Clock or Grandmaster device. (You may need to scroll down the tab to locate this box on the tab.)
  4. Use the **Profile** menu to specify the standard/specification used for PTP.
- ★ The Domain is automatically set if **Custom PTP Profile** is not selected.
5. Use the **Domain** field to specify the sub-domain the PTP clock is assigned to.
- ★ There can be multiple PTP domains operating concurrently within a network. The domain is a field in all PTP message headers. Messaging between entities are segregated by domain (e.g. The IGGY-MADI is an endpoint configured for domain 128 and ignores messages from a neighboring clock configured for domain 127).
6. If you did not select the **Slave Only** box and the IGGY-MADI matches the primary Grandmaster election criterion for your network:
    - a. Use the **Priority 1** field to define the first 8bit clock field.
    - b. Use the **Priority 2** field to define the backup 8bit clock field.

### To configure the PTP settings for a specific NET port

1. Select the **Advanced > Timing** tab.  
The **PTP** tab is automatically selected.



2. Select the **Custom PTP Profile** box.

The Domain, Priority1, Priority2, Sync Interval, Announce Interval and Announce Receipt Timeout fields are now editable.

3. Use the **Sync Interval** field to specify the number of seconds at which synchronization messages are sent from the master clock to the specified NET port on the IGGY-MADI.
4. Use the **Announce Interval** field to specify the rate of announce messages that the specified NET port on the IGGY-MADI requests from the master clock during a Unicast session.
5. Use the **Announce Receipt Timeout** field to specify the number of seconds the specified NET port on the IGGY-MADI waits for an announce interval message before timing out.
6. Click **Apply** to save the new settings.

## Configuring the Audio Offset for Outputs

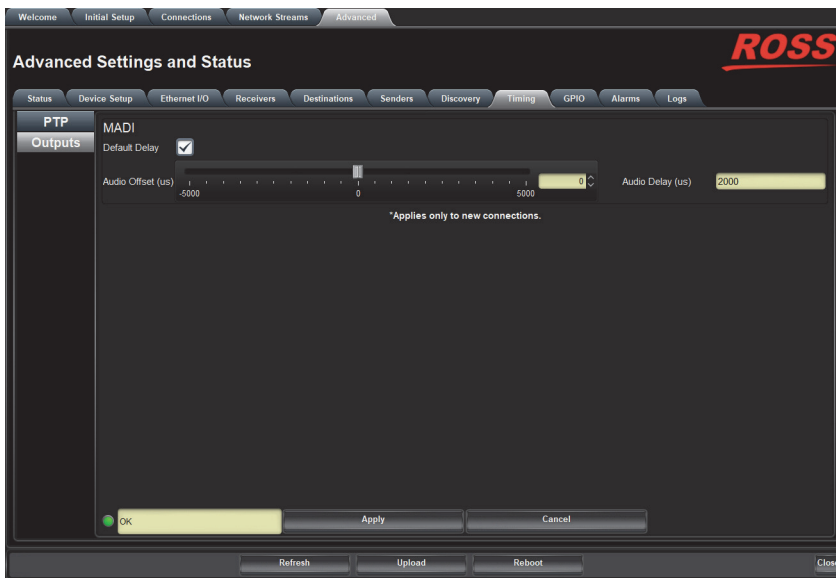
An output is timed relative to the input stream, and the source will be delayed a fixed offset from the sender's RTP timestamps. This allows for non-PTP aligned sources to be passed through with fixed latency.

- ★ Use this procedure if you need to adjust the timing of each output independently. Otherwise it is recommended to keep these settings at the default values.

### To adjust the timing for an output

1. Display the IGGY-MADI interfaces in DashBoard as outlined in the procedure “**To access the IGGY-MADI in DashBoard**” on page 38.
2. Select the **Advanced > Timing** tab.
3. Click **Outputs**.

The **Timing** tab updates to display the timing options for each output.



4. Locate the options for the output you want to adjust the timing for.
5. To automatically apply the default delay value of 20000us, select the **Default Delay** box for the output.
6. To manually configure the delay and offset values for an output:
  - a. Verify that the **Default Delay** box is cleared.
  - b. Use the **Audio Offset** slider to adjust the relative position of the audio start position as an offset to the reference.

★ Audio delay is specified relative to the reference source.

7. Click **Apply** to save the new settings.
8. Refresh the connection as follows:
  - a. Select the **Receivers** tab.
  - b. Locate the row for the output you need to refresh the connection for.
  - c. Click **Disconnect**.

The applicable **Output Status** field reports “**Not in Use**” and the Destination reads “**Disconnected**” for the **Audio** field.

- d. Click **Connect**.

## Setting the Audio Packet Time

You can add an offset to the audio streams if you wish to define the rate the IGGY-MADI sends packets. Keep in mind that a larger packet time results in more Ethernet packet overhead (more packets are sent) but less network delay.

★ This impacts all connected audio streams. It is recommended to set the Audio Packet Time before configuring your audio streams.

### To set the audio packet time

1. Display the IGGY-MADI interfaces in DashBoard as outlined in the procedure “**To access the IGGY-MADI in DashBoard**” on page 38.
2. Select the **Advanced > Device Setup** tab.

3. Use the **Audio Packet Time** menu to specify the amount of time that IGGY-MADI will add as an offset to the audio streams.
4. Click **Apply**.
5. Re-connect the audio streams as outlined in the section “**Routing the Signals**” on page 64.

# Configuring the Destinations

You can choose to use the default destination values or customize the number of destinations and audio channels assigned to each. This chapter outlines both methods.

## Using the Default Destination Settings

The default Destination settings are as follows:

- Eight MADI outputs with assigned Destination Names (using the nomenclature **Destination #** where # is an auto-generated number)
  - Each MADI output is pre-configured with 8 channels
  - Each MADI output is enabled (the corresponding box is selected)
  - The Default Mapping box in the Channel Mapping area is automatically selected.
  - The MADI Output Ports are automatically assigned in a 1:1 map (where 1-8 is assigned to MADI A1-8, 9-16 is assigned to MADI B1-B8, etc.)
- ★ The default number of channels per Destination can be defined via the **Initial Setup** tab.

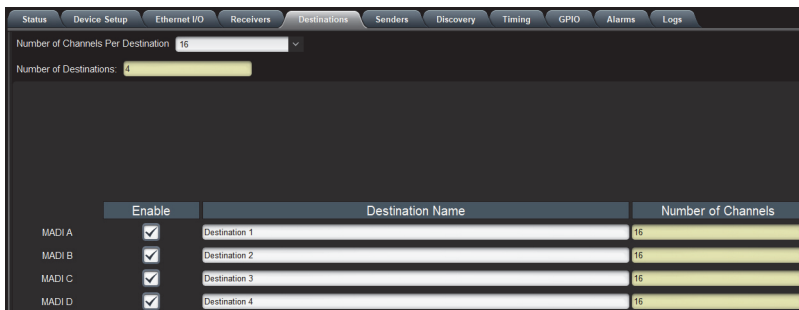
## Customizing a Destination

You can customize the destination labels, and the number of audio channels assigned to each destination. This feature enables you to assign channels for specific work flow and to divide a large MADI source into more intuitive parts. For example you may need MADI channels 1-16 to go to Speaker 1, channels 17-32 to Speaker 2, channels 1-8 to Monitor 1 etc. You would then connect the network streams to these specific destinations directly.

### To customize the destination list

1. Display the IGGY-MADI interfaces in DashBoard as outlined in the procedure “**To access the IGGY-MADI in DashBoard**” on page 38.
2. Select the **Advanced > Destinations** tab.
3. Use the **Number of Channels per Destinations** field, located in the top left corner of the tab, to specify the number of channels for all destinations.

The **Destinations** tab updates to display the specified number of channels. In the example below, the user selected **8**.



4. Use the **Destination Name** field to specify a unique identifier for each destination.
- ★ This is used to help identify the output within your system and in the DashBoard **Connections** tab.
5. Select the **Enable** box for the destination to display it in the **Connections** tab.
  6. Click **Save**.



# Configuring the Senders

For each MADI input signal, you need to specify the IP encapsulation properties for the active audio.

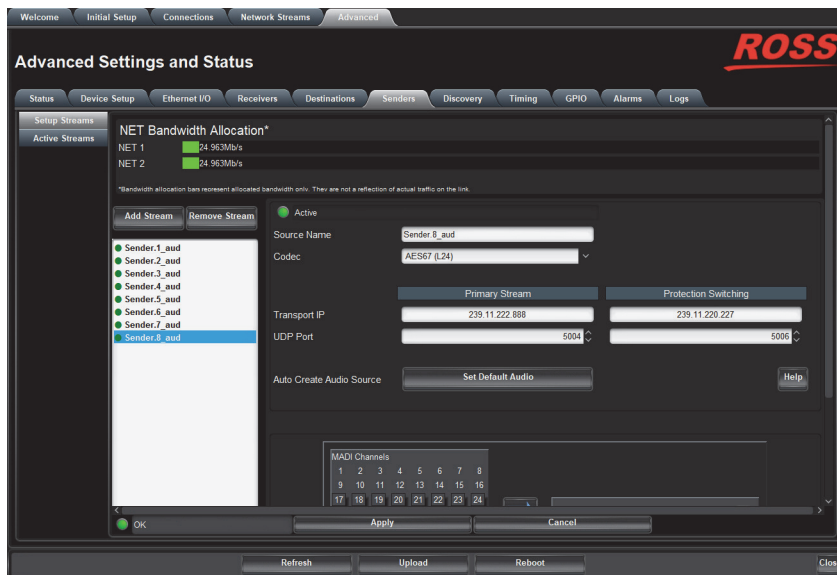
## Configuring an Audio Sender

Before you begin, make a note of the **NET Bandwidth Allocation** for the NET ports to determine the available capacity on each port. This information is displayed in the top portion of the **Senders** tab.

### To create a new audio essence

1. Display the IGGY-MADI interfaces in DashBoard as outlined in the procedure “**To access the IGGY-MADI in DashBoard**” on page 38.
2. Select the **Advanced > Senders** tab.

The **Setup Streams** sub-tab is automatically selected.



3. Click **Add Stream**.  
The **Stream** list and **Source Name** field updates to include a new entry “**Sender.#**” where **#** is an auto-generated number.
4. Use the **Source Name** field to override the auto-detected name of the data stream with a unique identifier for the stream.  
★ The Source Name is used to help identify the sender within your system and in the DashBoard **Connections** interface.
5. If the **Allow Random IP** feature is enabled (via the **Initial Setup** tab), proceed to step 8.
6. Edit the **Transport IP** and **UDP Port** fields for the Primary Stream you wish to assign the sender to.
7. If required, edit the **Transport IP** and **UDP Port** fields for the Protection Switching stream the sender will use.
8. Proceed to the next section.

## Mapping the Audio Channels to a Sender Stream

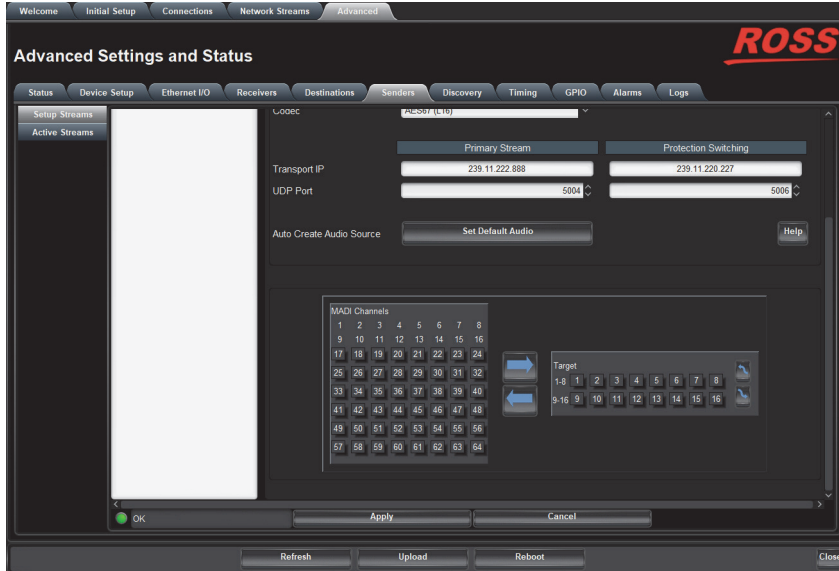
You can choose to apply the default audio channel map or assign the channels as required by your system. Both methods are described below.

## To map the audio channels to a sender stream using the default channel map

1. Click **Set Default Audio**.

The **MADI Channels** map updates to display the default channel map. You may need to scroll to the bottom of the tab to display the map.

★ In the example below, the Audio Channel Count is set to 8, resulting in a target with 8 streams.



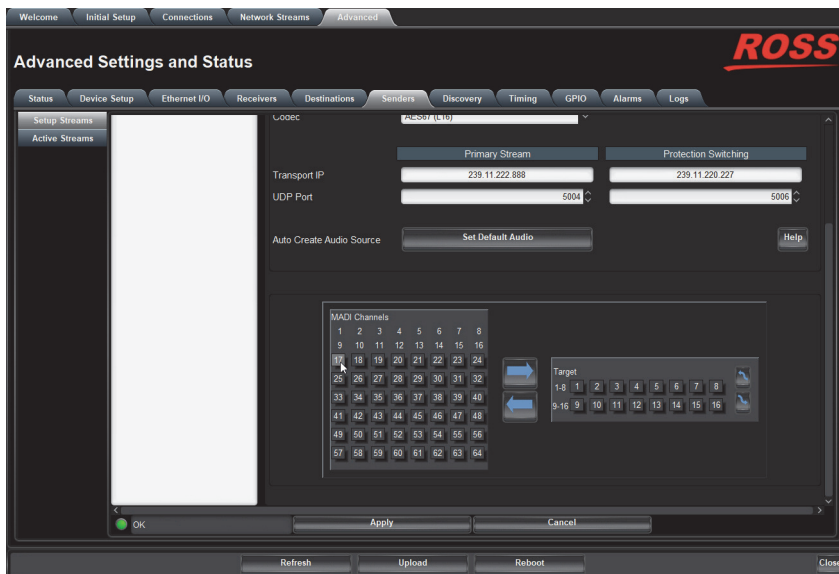
2. Click **Apply** to save the new settings.

## To customize the audio channel mapping for a sender stream

★ A MADI channel can only be assigned to one sender.

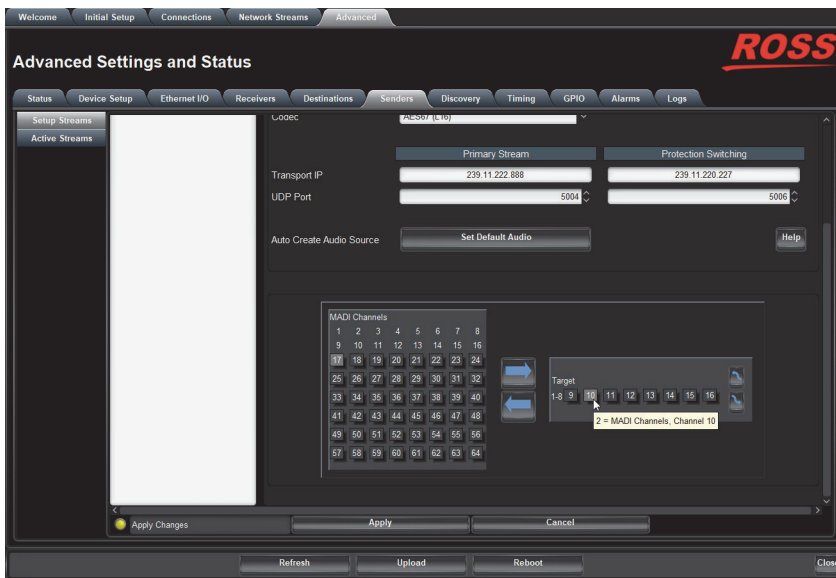
1. In the **MADI Channels** map, select the channels to include in the audio stream.


In the example below, the user selected channel **17**.



2. In the **Target** map, select the sender channel(s) to assign the MADI channel to.

In the example below, the user selected channel **10**.



3. Click .
4. Click **Apply** to save the new settings.



# Setting up the Network Streams

Once you have the timing, destinations, and senders configured on the IGGY-MADI, you must specify the available IP streams as network sessions for the IGGY-MADI.

## Overview

You can configure a network stream for the IGGY-MADI by assigning an advertised stream or adding a stream by manually specifying the IP stream credentials. A network stream advertised by a node flows to multiple devices.

## What is a Network Stream Source?

A network stream source allows you to create a grouping of streams on the network into a unit that can be mapped to a destination.

Network stream sources are required if:

- the destination has more channels than a stream on the network and the user wants to drive all channels;
- the user wants to perform complicated audio shuffling.

Network stream sources are not required if:

- the user has destinations and network streams that are the same size (i.e. channel count);
- wants to perform a 1-to-1 mapping.

## Work Flow

From DashBoard you create network stream sources, map the audio channels, and assign the group to a destination.

You create network streams, combine them into audio mappings with different assignments to create network stream sources. Then the network stream sources get mapped to a specific destination, which corresponds to a specific set of MADI channels.

## Adding a Network Stream Source

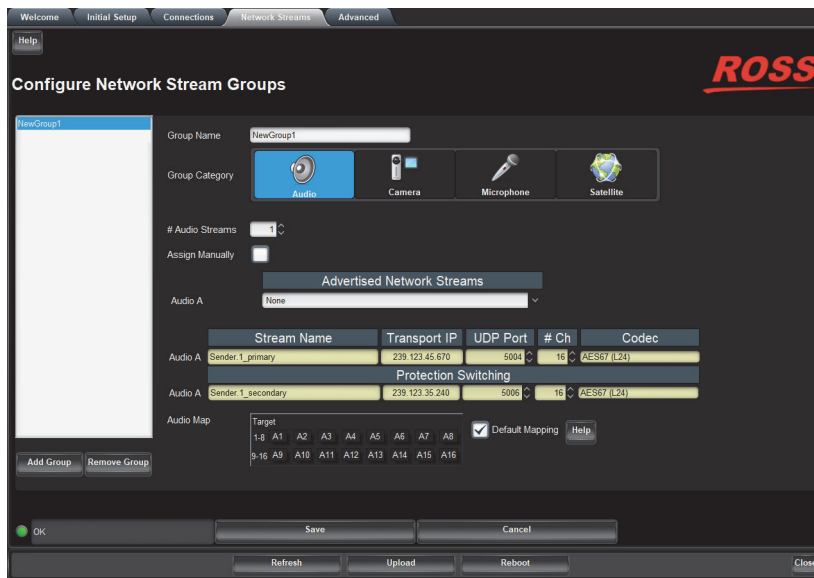
A network stream group is identified in the Receivers and Connections tabs using the parameters specified in the Network Streams tab. Ensure to give each group a unique name for easy identification in the DashBoard.

## Using an Advertised Stream

The **Network Streams** tab automatically provides a list of advertised RAVENNA streams available to the IGGY-MADI. This enables you to quickly create network stream sources using only the (detected) advertised streams.

### To add a new network stream using an advertised stream

1. Display the IGGY-MADI interfaces in DashBoard as outlined in the procedure “**To access the IGGY-MADI in DashBoard**” on page 38.
2. Select the **Network Streams** tab.



### 3. Click **Add Group**.

The fields in the **Network Streams** tab clear and the **Group Name** field displays “**NewGroup#**” where # is an auto-generated character.

### 4. Use the **Group Name** field to specify a unique identifier for the network stream.

### 5. Verify that the **Assign Manually** box is unselected (cleared).

### 6. Use the **# Audio Streams** menu to specify the total number of audio streams for this group.

★ This number determines the Audio Map options and the number of streams you can configure.

### 7. Use the **Advertised Network Streams** menus to specify the stream for the audio signals for the network stream.

The **Transport IP**, **Port**, and **DSCP** fields are read-only and automatically populated when a new selection is made in the **Advertised Stream** menu.

### 8. Use the options in the **Group Category** area to assign the network stream to a Connections category.

★ Assigning network streams to a specific Category enables you to later filter the sources on the Connections tab.

### 9. Click **Save** to update the list in the Network Streams tab.

## Manually Assigning a Stream

An IP stream can also be manually assigned as a network stream for the IGGY-MADI. You will need the Transport IP Address, Port number, and DSCP value for the IP stream you want to add. This is useful if you wish to access a network stream that is not a RAVENNA device.

### To manually define a new network stream

#### 1. Display the IGGY-MADI interfaces in DashBoard as outlined in the procedure “**To access the IGGY-MADI in DashBoard**” on page 38.

#### 2. Select the **Network Streams** tab.

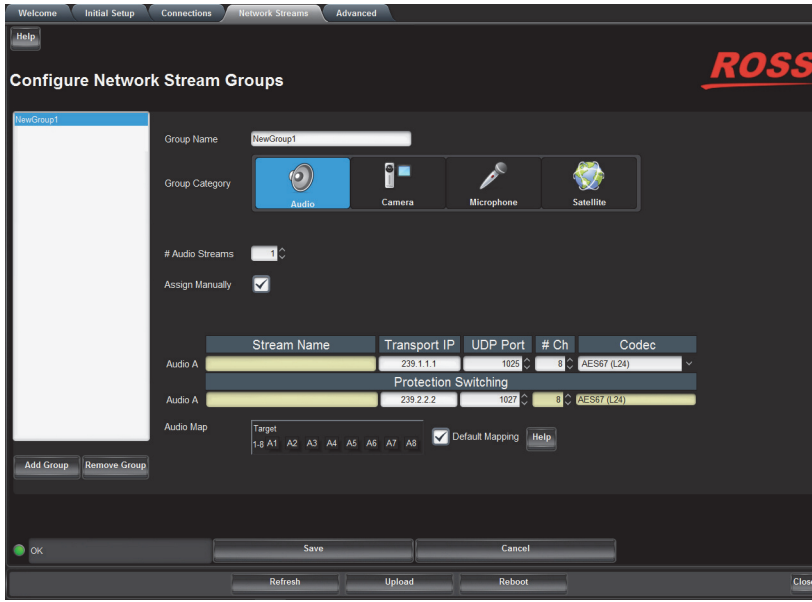
#### 3. Click **Add Group**.

The fields in the **Network Streams** tab clear and the **Name** field displays “**NewSource#**” where # is an auto-generated character.

#### 4. Use the **Group Name** field to specify a unique identifier for the network stream.

#### 5. Select the **Assign Manually** box.

The **Transport IP**, **UDP Port**, **# Ch**, and **Codec** fields are now editable.



6. Use the **# Audio Streams** menu to specify the total number of audio streams for this group.
  - ★ This number determines the Audio Map options and the number of audio streams you can configure for this group. In the example above, there are 2 audio streams to configure (Audio A and Audio B).
7. Use the **Transport IP** field to specify the multicast IP Address for the network stream.
  - ★ IGGY-MADI only receives multicast IP Addresses in the range of 239.x.x.x. Contact Ross Technical Support if you need additional IP ranges.
8. Use the **UDP Port** field to specify the RTP port for the network stream.
9. Use the **# Ch** field to assign the total number of audio channels for the network stream.

In the example above, there are 8 audio channels assigned to each audio stream.
10. Use the **Codec** menu to specify the data transmission standard that the IGGY-MADI will use for this stream.
11. Use the options in the **Category** area to assign an icon to the button on the Connections tab.
12. If required, use the **Protection Switching** fields to assign the redundant audio streams to the IGGY-MADI.
  - ★ The **Protection Switching** options display as two separate rows below the manually added stream fields.
13. Click **Save** to update the list in the Network Streams tab.

## Mapping the Audio Channels

Audio shuffling enables you to take any channels from the network streams within a stream group and re-map them in any order before assigning to a destination. You can choose to apply the default audio channel map (1:1 mapping) or assign the channels as required by your system. Both methods are described below.

- ★ When you create a new network stream, the audio Target map displays the number of available channels for mapping (as defined in the Destinations tab). A single network stream can be used to drive all MADI channels, but you do not need to assign all 64 channels. For example, if you are connecting to a 16-channel destination, you would assign the first 16 channels.

**To assign audio channels to a stream using the default map**

1. Locate the **Audio Map** area of the **Network Streams** tab.
2. Select the **Default Mapping** box to map the channels to audio streams as 1:1
3. Click **Save** to update the list in the Network Streams tab.

★ You may need to scroll down the tab to locate this button.

**To customize the audio channel mapping for the network stream**

1. Locate the **Audio Map** area of the **Network Streams** tab.

★ You may need to scroll down the tab to fully display the **Audio Map**.

2. Clear the **Default Mapping** box.

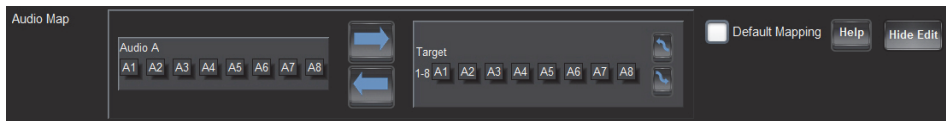
The Channel Mapping area updates to display the mapping options based on the number of destinations and audio channels you specified using the fields on this tab.


The **Edit** button now displays.



3. Click **Edit**.

The Audio Map area updates to provide two maps.



4. Select the network stream channel(s) on the leftmost map.
5. On the rightmost map, select the output channel(s).
6. Click  to assign the channel.
7. Repeat steps 4 to 6 to map all the channels to target channels.
8. Click **Save**.

# Operation

You can route the IGGY-MADI destinations and stream sources using the options in the Connections tab.

## Connections Tab Overview

The Connections tab is organized into two areas: Destinations and Stream Sources.



Figure 14.1 Example of a Populated Connections Tab

### 1. Destinations Area

This area displays the available outputs in a series of rows as configured in “**Configuring the Destinations**” on page 53. Each output is represented as a button which is clicked to include it in the routing switch. The Audio read-only fields report the Network Streams assigned to the output.

A Status read-only field reports overall communication status and whether any error conditions are occurring on the output.

### 2. Stream Sources Area

This area displays the available inputs as selectable buttons. Use the **Filter** field to narrow down the options displayed in the area.

### 3. Show Stream

Use the options in the Show Stream area to filter the type of network streams displayed. Choose from the following:

- › **Network Streams** — Select this option to display all the network stream sources that were created in “**Setting up the Network Streams**” on page 59.
- › **Advertised Sessions** — Select this option to display only the raw advertised streams. Using this selection, you can select a destination, select an advertisement with the same number of audio channels, and connect.

### 4. Refresh Button

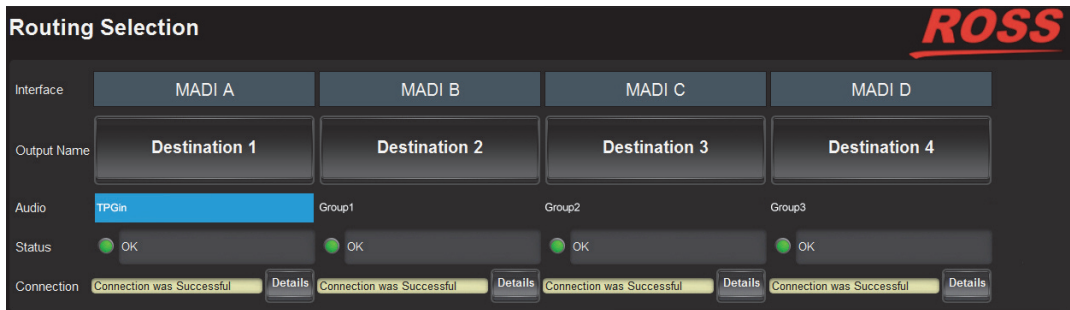
Click this button to update the list of available Stream Sources. It is recommended to refresh the list before making connections (but not between connections).

## Routing the Signals

To route the audio signals you must first select a MADI output, then a network stream. Keep in mind that routing occurs automatically after a Stream button is selected.

### To select an output

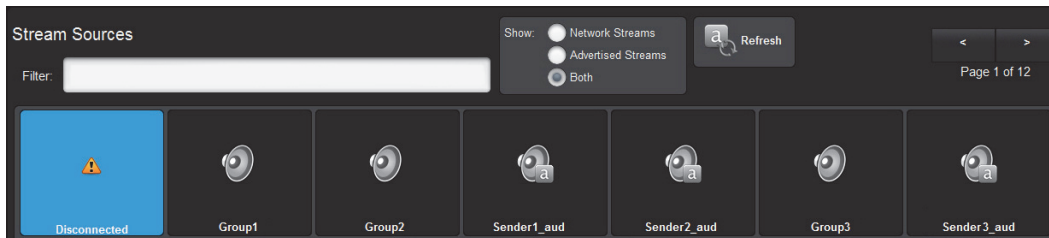
1. Display the IGGY-MADI interfaces in DashBoard as outlined in the procedure “**To access the IGGY-MADI in DashBoard**” on page 38.
2. Select the **Connections** tab.
3. In the **Output Name** row of the **Destinations** area, locate the button for the output you wish to route.



4. Click the required **Output** button.

### To perform the switch

1. In the **Stream Sources** area, locate the button for the Network Stream you wish to route.




2. If required, filter the options in the Stream Sources area using the following:
  - **Filter** field — type text in the field to filter the items displayed in Stream Sources area to those with names containing the specified text.
  - **Show** options — select a type of stream to display. Choose from Network Streams (manually defined streams), Advertised Streams (streams the IGGY-MADI automatically detects), or Both.
3. Click the required **Network Stream** button to perform the switch.

## Using IGGY-MADI with Ultritouch


Ultritouch uses the open SLP protocol to locate devices on the same network as it is connected to. This section outlines how to manually add the IGGY-MADI to the list of connected devices by specifying its IP address. You must first set up communications between IGGY-MADI and the Ultritouch panel before you access the IGGY-MADI interfaces, including the Connections window.

### To set up a connection point between IGGY-MADI and Ultrix/Ultricore

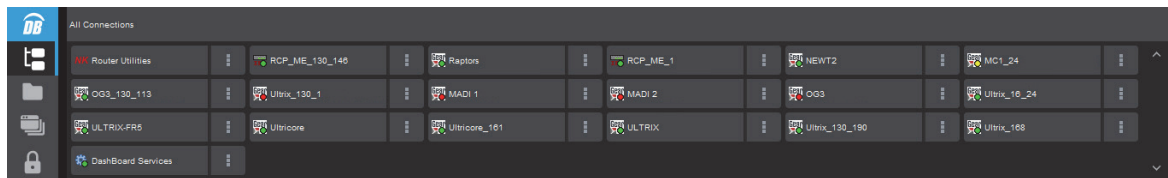
1. On the Ultritouch panel, tap .
- ★ This button is located on the leftmost toolbar of the Ultritouch interface.
2. Tap **Connected Devices**.

3. Tap **Add**.
4. Tap **Manually Add a Connection Point**.
5. Use the **Device IP/Hostname** field to specify the IP Address for the IGGY-MADI.
6. Tap **Add Device**.  
The device is now listed in the **Connected Devices** table.
7. Select the device from the **Connected Devices** table.
8. Tap **Connect**.

#### To display the IGGY-MADI on the Ultritouch panel

1. On the Ultritouch panel, tap  .

The **All Connections** interface displays.



2. Tap the icon for the IGGY-MADI you want to control via Ultritouch.
3. Tap the icon for the menu you wish to display on the Ultritouch panel.

The Connections window for the selected IGGY-MADI automatically displays on the Ultritouch panel.

### Accessing the IGGY-MADI Interfaces

It is recommended to use the DashBoard client software to setup and configure the IGGY-MADI and then use Ultritouch for control via the Connections interface. Keep the following in mind when using Ultritouch to control the IGGY-MADI:

- The Welcome and Initial Setup interfaces are not available on the Ultritouch panel.
- The Connections window automatically displays each time the IGGY-MADI interface is loaded onto the Ultritouch panel.
- The Connections window is re-organized when displayed on an Ultritouch with the Destination buttons in the left most window, and the Sources on the right.

#### To perform the switch

1. In the **Connections** window, locate the button for the output you wish to route.
2. Tap the required **Output** button.
3. Tap the required **Network Stream** button.
4. Tap **TAKE** to perform the switch.



# Configuring the GPIO and Tallies

The GPIO tab lists all the options for configuring each GPIO and tally available on the IGGY-MADI. Each GPIO and tally can be configured independently from the others, allowing you to customize the function of each connection.

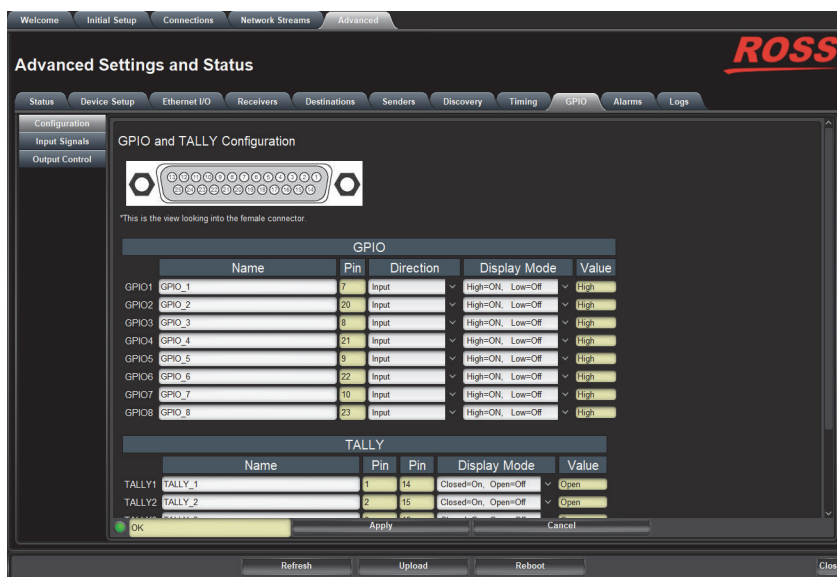
## Configuring a GPIO

A GPIO pin can be configured as an input (GPI) or an output (GPO). You must configure each pin that will be used to communicate with your external device.

### To configure a GPIO

1. Display the IGGY-MADI interfaces in DashBoard as outlined in the procedure “**To access the IGGY-MADI in DashBoard**” on page 38.
2. Select the **Advanced > GPIO** tab.

The **Configuration** tab is automatically selected.



3. Locate the row for the GPIO you wish to configure.
4. Use the **Name** field to assign a unique identifier for the GPIO pin.
5. Use the **Direction** menu to specify the function of the GPIO pin. Choose from the following:
  - **Input** — The GPIO pin is configured as an input (GPI).
  - **Output** — The GPIO pin is configured as an output (GPO).
6. Use the **Display Mode** menu to specify the GPIO behavior.
7. Click **Apply** to save the new settings.

## Configuring a Tally

When configured as a Tally, a port becomes an output, providing a status indicator. Typically this is used to indicate which input(s) are on-air at any given moment.

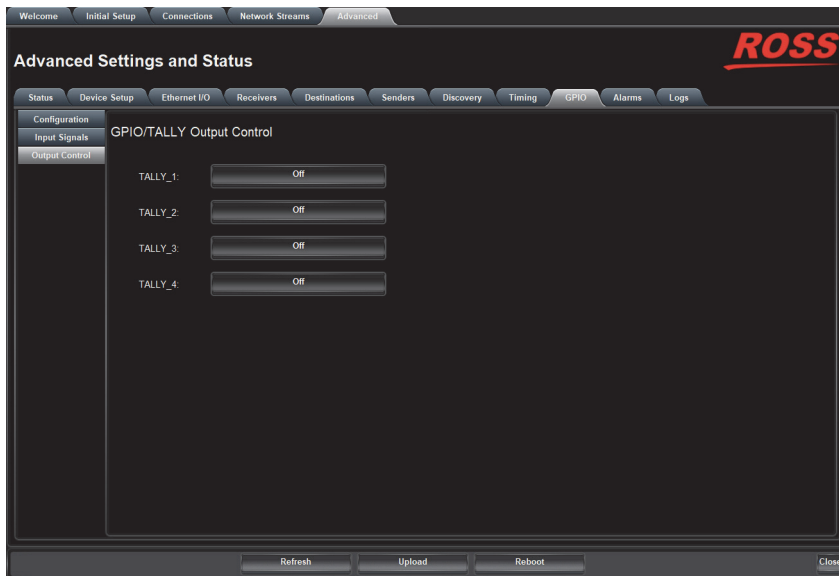
### To configure a Tally

1. Display the IGGY-MADI interfaces in DashBoard as outlined in the procedure “**To access the IGGY-MADI in DashBoard**” on page 38.
2. Select the **Advanced > GPIO** tab.  
The **Configuration** tab is automatically selected.
3. Locate the row for the tally you wish to configure.
4. Use the **Name** field to assign a unique identifier for the tally.
5. Use the **Display Mode** menu to specify the tally behavior.
6. Click **Apply** to save the new settings.

### To trigger a Tally

1. Display the IGGY-MADI interfaces in DashBoard as outlined in the procedure “**To access the IGGY-MADI in DashBoard**” on page 38.
2. Select the **Advanced > GPIO** tab.
3. Select **Output Control**.

The tab displays a list of configured GPIOs and/or Tallies. In the example below, there are four Tallies available.



4. Toggle the button for the GPIO or Tally you wish to trigger.  
The button label changes to “On” when that output is triggered.

# Upgrading the Software

The IGGY-MADI software can be upgraded in the field using the **CONTROL** port and the options available in DashBoard.

## To upgrade the software on the IGGY-MADI

1. Visit the Ross View website (<http://www.rossvideo.com/iggy>) for the latest software version file.
  2. Display the IGGY-MADI interfaces in DashBoard as outlined in the procedure “**To access the IGGY-MADI in DashBoard**” on page 38.
  3. Select **Upload**, located near the bottom of the DashBoard interface, to display the **Select file Upload** dialog.
  4. Navigate to the file you want to upload.
  5. Click **Open > Finish**.
  6. Monitor the upgrade.
- ★ Clicking **Cancel** or **No** returns you to the **Uploading to Selected Devices** dialog without rebooting the device(s).
    - The IGGY-MADI device is temporarily taken off-line during the reboot process.
    - The process is complete once the status indicators for the **Card state** and **Connection** fields in the **Status** tab return to their previous status.
  - ★ If the IGGY-MADI fails to upgrade correctly, contact Ross Technical Support for assistance.



# DashBoard Interface Overview

The DashBoard client software enables you to monitor, configure, and operate your IGGY-MADI. The IGGY-MADI groups the configuration, monitoring, and operating features as a series of tabs in the DashBoard client window. Each tab provides access to specific configuration options for your IGGY-MADI.



Figure 17.1 Example of the IGGY-MADI Tabs in a DashBoard Window

## Welcome Tab

The Welcome tab displays on initial start-up of the IGGY-MADI in DashBoard. Once the initial settings are configured and applied to the IGGY-MADI, you can hide the Welcome and Initial Setup tabs by selecting **Initial Setup** > **Hide Welcome** tab and/or **Initial Setup** > **Hide Initial Setup Wizard** tab.



Figure 17.2 Example of the Welcome Tab

## Initial Setup Tab

The Initial Setup tab provides access to the IGGY Setup Wizard. This tab helps you to quickly set up your IGGY-MADI and proceed to configuring your Network Streams and Connections. Help buttons are provided throughout the tab to provide additional information on the menus and settings.

★ The same controls are available in the Advanced tabs. Refer to the section “**Advanced Tabs**” on page 76 for details.

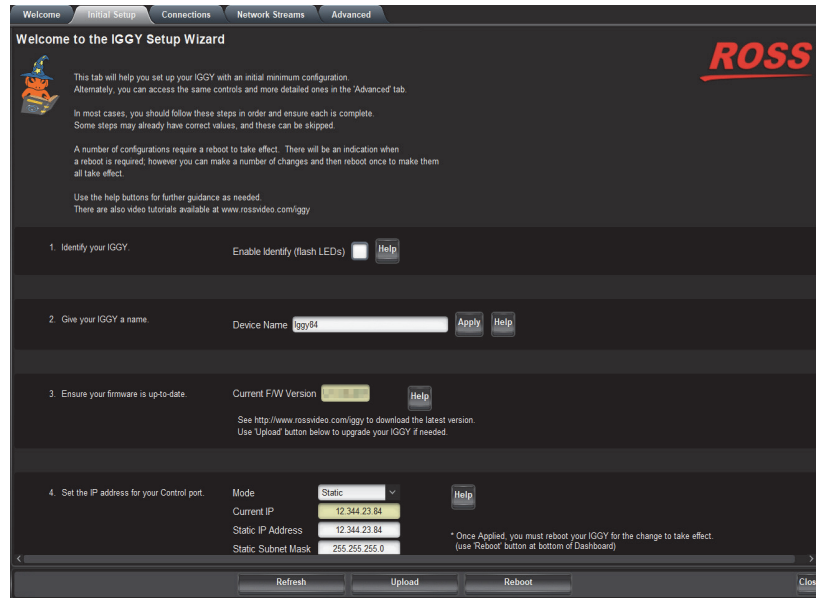


Figure 17.3 Example of the Initial Setup Tab

## Connections Tab

The Connections tab is a patch-panel style interface that enables the IGGY-MADI to connect to available senders on the network.

### Routing Selection Area

The Routing Selection area is located at the top of the Connections tab and provides options for routing audio signals to the outputs on the IGGY-MADI. From this area you can quickly select outputs and monitor the status of the output signals.

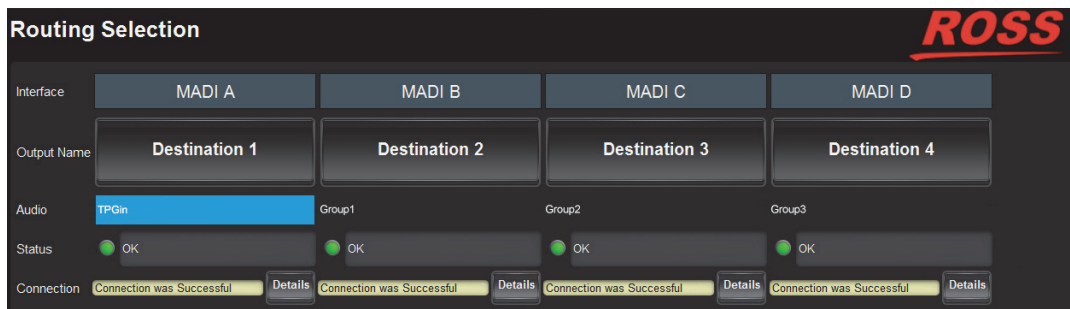


Figure 17.4 Connections Tab — Example of a Routing Selection Area

Table 17.1 summarizes the buttons, menus, and fields available in the Destinations area of the Connections tab.

**Table 17.1 Connections Tab — Destinations Area**

Item	Parameters	Description
Interface	MADI #	Indicates the physical connection on the IGGY-MADI
Output Name	#	Each button represents an output that is configured and available for switching
Audio (read-only)	#	Indicates the network stream currently used by the specified output
Status (read-only)	OK (Green)	No errors are detected on this output
	Alarm Suppressed (Green)	An alarm condition is present, but the alarm is disabled on the Advanced > Alarms tab
	Network Delay Not Compatible (Yellow)	The link offset selected by the user is smaller than the propagation delay of the network
	No packets received (Yellow)	The configured destination IP stream(s) is not receiving any packets; stream might not be on the network or experiencing other issues
	System clock is in failure (Red)	The IGGY-MADI is unable to re-obtain a stable clock source. Sessions cannot be created until this condition is fixed.  It is recommended to navigate to the Advanced > Timing > PTP tab to check the status of the PTP and update the Configuration settings.  Once PTP is locked again, the message clears.
	Param Out of Range (Red)	A Destination was configured with an invalid setting
Connection (read-only)	Not in Use (Gray)	This output is disabled
	Connection was successful	Indicates the connection status between the selected input and output
	Disconnected	
<blank>		
Details		Opens the Details dialog that provides more information about the state of the connection

## Stream Sources Area

The Stream Sources area is located on the bottom half of the Connections tab. From this area you can route any source signal to an output, monitor its status, and filter the stream available based on type.

Each button displayed here represents a configured network stream. You can filter what network streams are displayed using the **Filter** field (filtering according to the text entered in the field) or by selecting one of the Category buttons next to the **Filter** field.

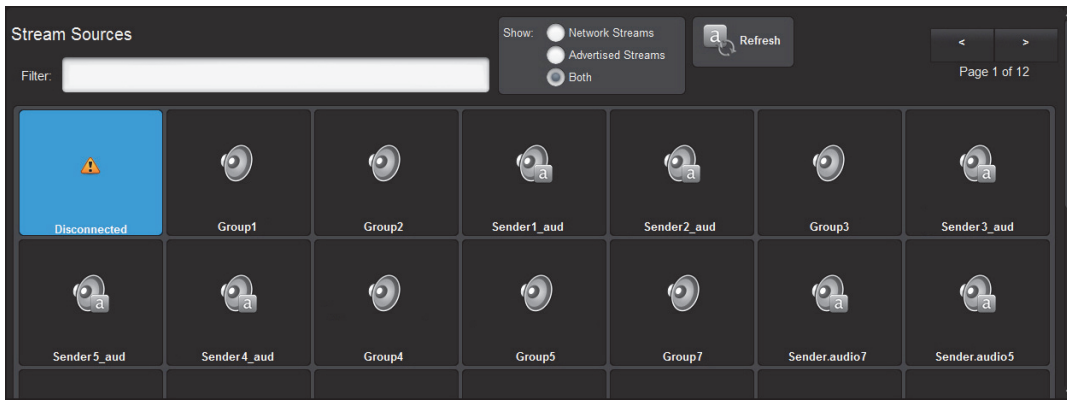


Figure 17.5 Connections Tab — Example of a Stream Sources Area

★ Once an output is selected, clicking a **Stream Source** button performs an immediate switch (a hot-punch).

## Network Streams Tab

The options in the Network Streams tab enable you to create and manage the IP streams in your system. Advertised streams are those that the IGGY-MADI automatically detects as defined by the RAVENNA protocol. You can also define a stream by manually populating the Transport IP, UDP Port, and #Ch fields for the audio signals.

Once a Network Stream is defined, it is made available for use in the **Connections** tab.

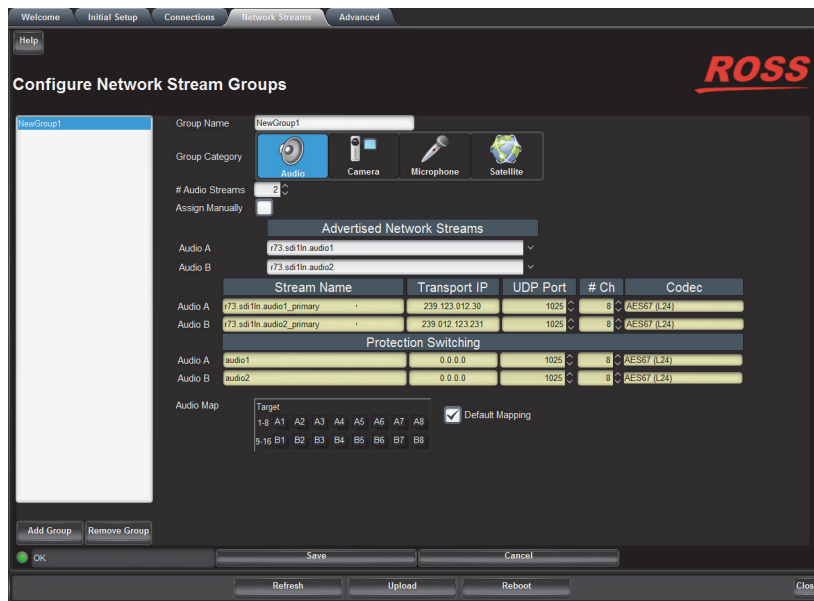


Figure 17.6 Network Streams Tab

Table 17.2 outlines the options displayed in the Network Streams tab starting from the left-most area of the tab.

Table 17.2 Network Streams Tab

Item	Parameters	Description
<b>Configure Network Stream Groups</b>		
List	<name>	Reports the configured Network Stream groups for this IGGY-MADI
Add Group		Enables you to configure a new stream group
Remove Group		Deletes the selected group

**Table 17.2 Network Streams Tab**

Item	Parameters	Description
Group Name	<text>	Specifies a unique identifier for the group
Group Category		Assigns the stream to a type of essence. This is useful when filtering the streams on the Connections tab
# Audio Streams	#	Specifies the maximum number of audio streams available in the selected group
Assign Manually	Selected	Enables you to manually enter the Transport IP, Port, and DSCP fields for a specific session
	Cleared	The Transport IP, Port, and DSCP fields are determined by the assigned Advertised Stream
<b>Advertised Network Streams</b>		
Audio #	None	Lists the discovered RAVENNA audio sessions. Select a session to auto-fill the Audio fields.
	#	
<b>Manually Configured Streams - Audio #</b>		
Stream Name	<name>	Assigns a unique identifier for the stream
Transport IP	##.##.##	Specifies the network socket for the video/audio data for the session. This value is auto-populated when you select an Advertised Stream.
UDP Port	#	Specifies the source port to connect to the advertised stream. This must match the source you are attempting to connect to.
# Ch		Specifies the maximum number of audio channels in the audio stream
Codec	<name>	Specifies the audio over IP technical standard that the transport stream uses
<b>Protection Switching - Audio #</b>		
Stream Name	<name>	Assigns a unique identifier for the stream
Transport IP	##.##.##	Specifies the network socket for the video/audio data for the session. This value is auto-populated when you select an Advertised Stream.
UDP Port	#	Specifies the source port to connect to the advertised stream. This must match the source you are attempting to connect to.
# Ch		Specifies the maximum number of audio channels in the audio stream
Codec	<name>	Reports the audio over IP technical standard that the transport stream uses
<b>Audio Map</b>		
Default Mapping	Selected	The channels in the target stream group are populated in the order that the selected network streams are listed

**Table 17.2 Network Streams Tab**

Item	Parameters	Description
Default Mapping	Cleared	Enables you to customize the audio map for the network stream
Edit		Displays when the Default Mapping box is not selected. Click this button to update the Audio Map options and to customize the audio channel mapping for the network stream group. Refer to “ <b>Mapping the Audio Channels to a Sender Stream</b> ” on page 55 for more information.

## Advanced Tabs

The Advanced sub-tabs expand the controls available in the Initial Setup tab.

## Status Tab

The Status tab is organized into two sub-tabs: Device Status and MADI Input.

### Device Status Tab

The Device Status tab provides read-only hardware information, signal status, and general product information for your IGGY-MADI. The tab is organized into four distinct areas in the DashBoard window: Alarm Status, Product, Hardware, and Load Factory Defaults.



*Figure 17.7 Example of the Advanced > Status > Device Status Tab*

**Table 17.3** summarizes the read-only information displayed in the Alarm Status area.

**Table 17.3 Status Tab — Alarm Status**

Item	Description
Device Setup Tab Changes	Reports if there are unsaved changes made to the Advanced > Device Setup tab
Discovery Tab Changes	Reports if there are unsaved changes made to the Advanced > Discovery tab

**Table 17.3 Status Tab — Alarm Status**

Item	Description
Timing PTP Tab Changes	Reports if there are unsaved changes made to the Advanced > Timing > PTP tab
Timing Output Tab Changes	Reports if there are unsaved changes made to the Advanced > Timing > Outputs tab
System Clock Status	Reports the status of the PTP Clock connection
Control RJ-45 Status	Reports the same information as the Advanced > Ethernet I/O > Control RJ-45 > Link Status field. Refer to <b>Table 17.9</b> for more information.
NET Status	Reports the same information as the Advanced > Ethernet I/O > NET # > Link Status fields. Refer to <b>Table 17.9</b> for more information.
MADI Input Status	Reports the same information as the Advanced > Status > MADI Input fields. Refer to <b>Table 17.7</b> for more information.
Receivers Status	Reports the same information as the individual alarms in the Receivers tab. Refer to the section “ <b>Receivers Tab</b> ” on page 82.
Senders Status and Changes	Reports if there are unsaved changes made to the Advanced > Senders tab
Destinations Changes	Reports if there are unsaved changes made to the Advanced > Destinations tab
GPIO Changes	Reports if there are unsaved changes made to the Advanced > GPIO tab

Product Area

**Table 17.4** summarizes the read-only information displayed in the Product area.

**Table 17.4 Status Tab — Product**

Item	Parameters	Description
Product	<name>	Indicates the product name of the module
Variant		Indicates the option(s) enabled on the module
Supplier		Indicates the supplier/manufacturer of the device
Firmware Version	#	Indicates the firmware version running on the module
Firmware Date	#	Indicates the date the firmware was released
FPGA Name	#	Indicates the FPGA name running on the module
FPGA Version	#	Indicates the FPGA version running on the module
Serial Number	#	Indicates the factory installed serial number of the module

Hardware Area

**Table 17.5** summarizes the read-only information displayed in the Hardware area.

**Table 17.5 Status Tab — Hardware**

Item	Parameters	Description
FPGA Temperature (Celsius)	#	Indicates the FPGA Core temperature

## Load Factory Defaults Area

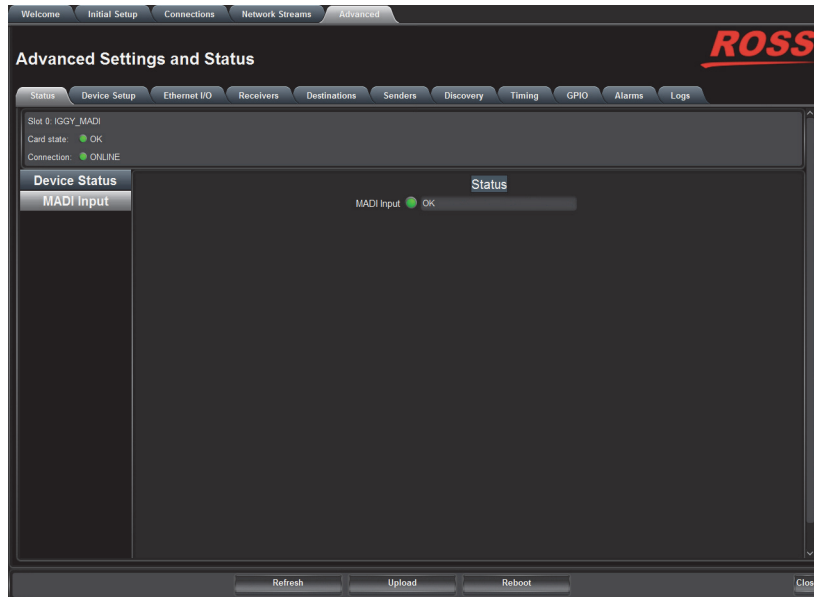
**Table 17.6** summarizes the read-only information displayed in the Load Factory Defaults area.

**Table 17.6 Status Tab — Device Settings**

Item	Parameters	Description
Reset All	Load Factory Defaults	Sets certain editable settings to the default values

## MADI Input Tab

The MADI Input tab reports read-only information on the status of the input signal detected on the MADI port.



*Figure 17.8 Example of the Advanced > Status > MADI Input Tab*

**Table 17.7** summarizes the read-only information displayed in the MADI Input tab.

**Table 17.7 MADI Input Tab**

Item	Parameters	Description
MADI Input	OK (Green)	Indicates the MADI input signal is detected and valid
	No Input (Red)	Indicates that the MADI input signal is not detected. Verify that the MADI port is cabled correctly.

## Device Setup Tab

The **Device Setup** tab provides settings such as Device Name, and DashBoard display settings.

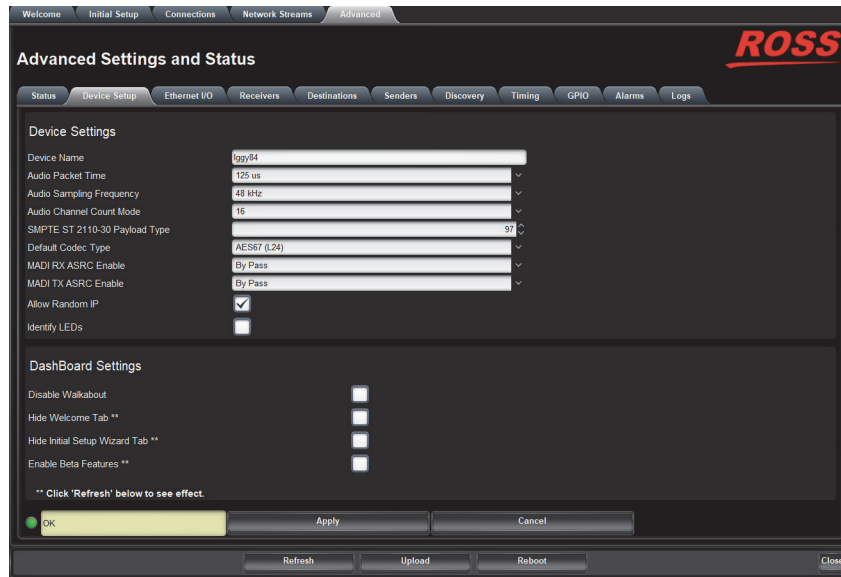


Figure 17.9 Example of the Advanced > Device Setup Tab

Table 17.8 summarizes the options displayed in the Device Setup tab.

Table 17.8 Device Setup Tab

Item	Parameters	Description
<b>Device Settings</b>		
Device Name	<text>	Specifies a unique identifier for this IGGY-MADI. This name is used to identify the streams the IGGY-MADI is managing.
Audio Packet Time	1 ms	Defines the amount of time that an IGGY-MADI sender will buffer audio samples before it is packeted into an Ethernet frame.  This impacts all connected audio streams. Applying a new Audio Packet Time automatically disconnects all audio streams.  It is recommended to set the Audio Packet Time before configuring your audio streams.
	# $\mu$ s	
Audio Sampling Frequency	44 kHz	Specifies the number of samples of audio carried per second
	48 kHz	
Audio Channel Count Mode	#	Specifies the maximum number of audio channels available for configuration within an IP-based stream. The default is 8.
SMPTE ST 2110-30 Payload Type	#	Specifies the 7-bit numeric value that identifies the RTP payload format the IGGY-MADI supports. The default is 97.
Default Codec Type	AES67 (L16)	Specifies the AES67 standard that the IGGY-MADI will default to for all IP-based streams
	AES67 (L24)	
	AES67 (L32)	

**Table 17.8 Device Setup Tab**

Item	Parameters	Description
Default Codec Type	Audio and Control (AM824)	Specifies the AM824 data transmission standard that the IGGY-MADI will default to for all streams
	Audio and Control (AM824 - AES3 Transparent)	
MADI RX ASRC Enable	By Pass	This is the default setting. Asynchronous Sample Rate Converter
	MADI Frame Sync Clock	
	External Word Clock	
MADI TX ASRC Enable	By Pass	This is the default setting. Asynchronous Sample Rate Converter
	MADI Frame Sync Clock	
	External Word Clock	
Allow Random IP	Selected	Enables the IGGY-MADI to choose a random IP Address for any stream when its IP Address field is set to 0.0.0.0
	Cleared	Disables this feature. An IP Address must be specified for all streams. This is the default setting.
Identify LEDs	Selected	The MADI LOCK, NET1, PTP LOCK, PTP Slv/Mst, PWR/STAT LEDs will flash in two second intervals from red, to green, to blue, then remain purple until this box is cleared.
	Cleared	
<b>DashBoard Settings</b>		
Disable Walkabout	Selected	The IGGY-MADI cannot be discoverable using the Walkabout feature of DashBoard
	Cleared	The IGGY-MADI is recognized and listed in the Walkabout interface in DashBoard
Hide Welcome Tab	Selected	The Welcome tab does not display in the DashBoard window
	Cleared	The Welcome tab displays in the DashBoard window
Hide Initial Setup Wizard Tab	Selected	The Initial Setup tab does not display in the DashBoard window
	Cleared	The Initial Setup tab displays in the DashBoard window
Enable Beta Features	Selected	Contact Ross Technical Support for more information on enabling this option
	Cleared	

## Ethernet I/O Tab

Use the Ethernet I/O tab to configure the network settings for the NET 1, NET 2, and Control RJ-45 ports on the IGGY-MADI.

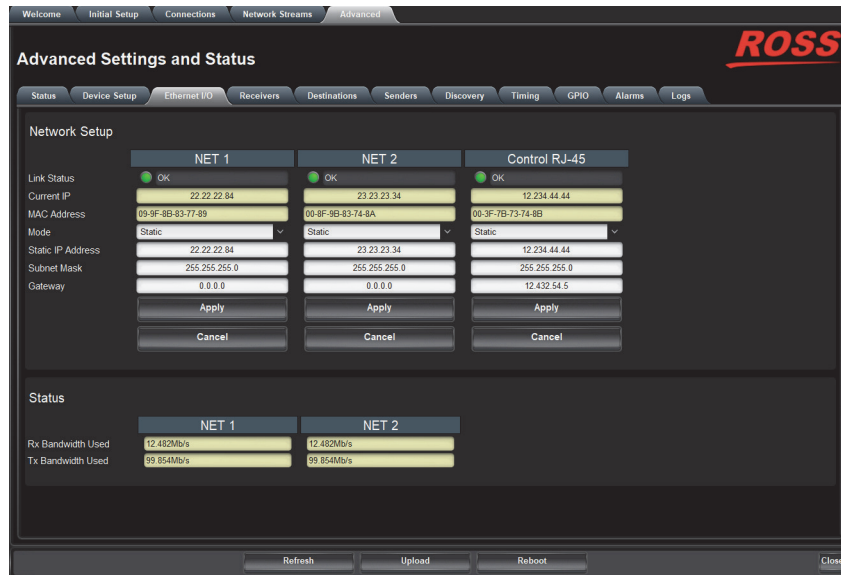


Figure 17.10 Example of the Advanced > Ethernet I/O Tab

### Network Setup Area

**Table 17.9** summarizes the fields and menus displayed for configuring the network settings of the CONTROL and NET ports. Note that each port is configured independently.

**Table 17.9 Ethernet I/O — Network Setup**

Item	Parameters	Description
Link Status (read-only)	OK (Green)	The link for the specified port is valid
	Alarm suppressed (Green)	The Link Status alarm is suppressed in the Device Status tab.
	Link Down (Red)	The link for the specified port is invalid (fails)
Current IP (read-only)	#	Indicates the IP Address currently assigned to the IGGY-MADI for the specified port
MAC Address (read-only)	#	Indicates the MAC Address currently assigned to the IGGY-MADI for the specified port
Mode	Static	The user manually supplies the network settings for the specified port
	DHCP	Automates the assignment of the network settings for the specified port
Static IP Address	#	Specifies the static IP Address for the IGGY-MADI when the user wants to manually assign to the specified port
Subnet Mask	#	The subnet mask for the specified port
Gateway	#	The gateway for communications outside of the local area network (LAN)

## Status Area

**Table 17.10** summarizes the read-only fields displayed for each NET port.

**Table 17.10 Ethernet I/O — Status**

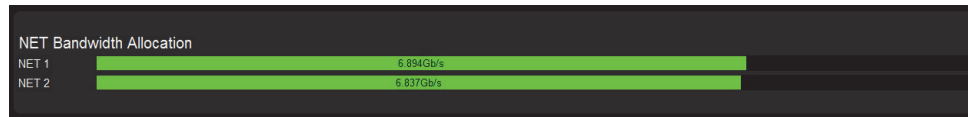
Item	Parameters	Description
Rx Bandwidth Used	#	Reports the amount of data the IGGY-MADI is currently receiving on the specified NET port
Tx Bandwidth Used	#	Reports the amount of data the IGGY-MADI is currently transmitting on the specified NET port

## Receivers Tab

The **Receivers** tab provides details on each of the IP receivers (NET ports) of the IGGY-MADI.

### NET Bandwidth Allocation Status

The Receivers tab displays a read-only field for each configured NET port on the IGGY-MADI. These fields report the bandwidth allocated by the Receiver NET port.



*Figure 17.11 Receivers Tab — Example of the NET Bandwidth Bars*

If the bandwidth bar is green, the allocated bandwidth is below 100%.

### MADI Receiver Configuration Area

Each MADI Receiver stream is represented as a row in the tab and reports the communication status.

	Status	Name	
MADI A	OK	Destination 1	Disconnect ...
MADI B	OK	Destination 2	Disconnect ...
MADI C	OK	Destination 3	Disconnect ...
MADI D	OK	Destination 4	Disconnect ...
MADI E	OK	Destination 5	Disconnect ...
MADI F	OK	Destination 6	Disconnect ...
MADI G	OK	Destination 7	Disconnect ...
MADI H	OK	Destination 8	Disconnect ...

*Figure 17.12 Advanced > Receivers Tab — Example with Eight MADI Streams*

**Table 17.11** outlines the read-only fields and menus available to configure the receiver settings for the MADI signal


**Table 17.11 Receivers Tab — Configuration Area**

Item	Parameters	Description
Status (read-only)	OK (Green)	No errors are detected on this MADI connection
	Apply Changes (Yellow)	This receiver has unsaved settings. Click <b>Apply</b> at the bottom of the tab to save your settings.
	Network Delay Not Compatible (Yellow)	The link offset selected by the user is smaller than the propagation delay of the network

**Table 17.11 Receivers Tab — Configuration Area**

Item	Parameters	Description
Status (read-only)	No packets received (Yellow)	The configured receiver IP stream(s) is not receiving any packets; stream might not be on the network or experiencing other issues
	Param Out of Range (Red)	Two receivers with the same network stream were created. IGGY-MADI can only subscribe to a stream once.
	System clock is in failure (Red)	The IGGY-MADI is unable to re-obtain a stable clock source. Sessions cannot be created until this condition is fixed.  It is recommended to navigate to the Timing > PTP tab to check the status of the PTP and update the Configuration settings.  Once PTP is locked again, the Network Groups will need to be disconnected and then re-connected to clear the alarm.
	Not In Use (Grey)	The receiver is not configured
Name	<text>	Assigns an unique identifier to the receiver stream
Disconnect		Stops that session and the Receiver outputs silence

#### Additional Status

Table 17.12 summarizes the read-only information that displays when the  button is selected at the end of a row.

**Table 17.12 Receivers Tab — Additional Status**

Item	Parameters	Description
<b>Audio #</b>		
Status	OK (Green)	No errors are detected on the audio signal
	No Active Sessions	The MADI output is not configured and a network stream is not assigned to it
Source Name	xx.yy.audio#	The source name is determined by the stream that is connected
Transport IP	###.###	Specifies the IP Address for the audio stream
	<blank>	The IGGY-MADI firmware provides an IP when the session is created
Port	#	Indicates the port associated with the IP address
NET (read-only)	#	Indicates the NET port on the IGGY-MADI that the audio signal is derived from
Link Offset (µs)	#	Reports the Audio Offset and/or Audio Delay values set in the Timing > Outputs tab for the MADI output

#### Destinations Tab

The **Destinations** tab is organized into two areas: Destinations Setup and Channel Mapping.

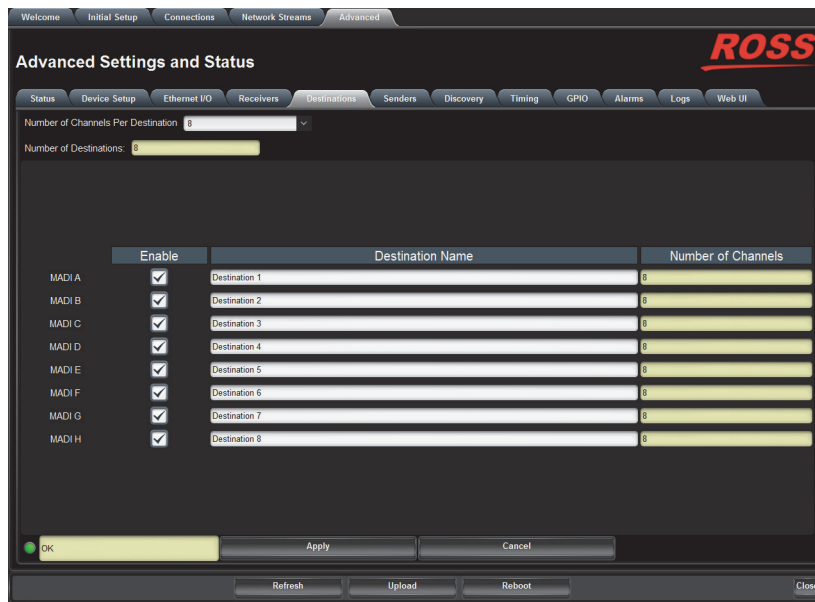


Figure 17.13 Example of the Advanced > Destinations Tab

Table 17.13 outlines the options in the Destinations tab.

Table 17.13 Destinations Tab

Item	Parameters	Description
Number of Channels Per Destination	#	Assigns the specified number of channels to each Destination
Number of Destinations	#	Reports the maximum number of MADI destination streams the IGGY-MADI supports
<b>MADI #</b>		
Enable	Selected	The specified MADI stream is enabled and available for configuration
	Cleared	The specified MADI stream is disabled and unavailable for use
Destination Name	<text>	Assigns a unique identifier to the MADI stream. This name is used on the Connections tab
Number of Channels (read-only)	#	Specifies the maximum number of audio channels for the MADI stream

## Senders Tab

The **Senders** tab is organized into two sub-tabs: Setup Streams and Active Streams. The Setup Streams tab provides options for configuring the senders for each NET port of the IGGY-MADI.

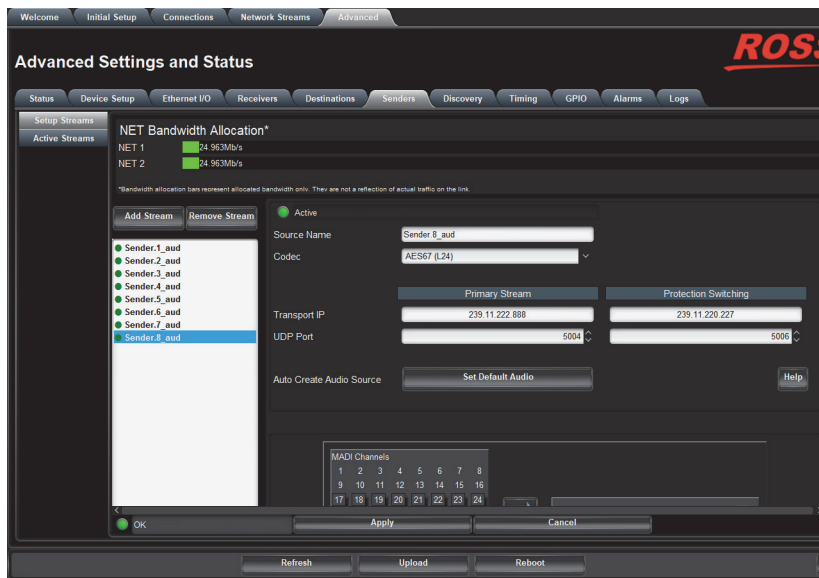


Figure 17.14 Example of the Advanced > Senders > Setup Streams Tab

### Setup Streams Tab

The Setup Sender Stream area provides options for enabling, re-naming, selecting the source, and the communication settings for each NET port.

Table 17.14 outlines the options in the Setup Streams tab.

Table 17.14 Senders Tab — Setup Streams

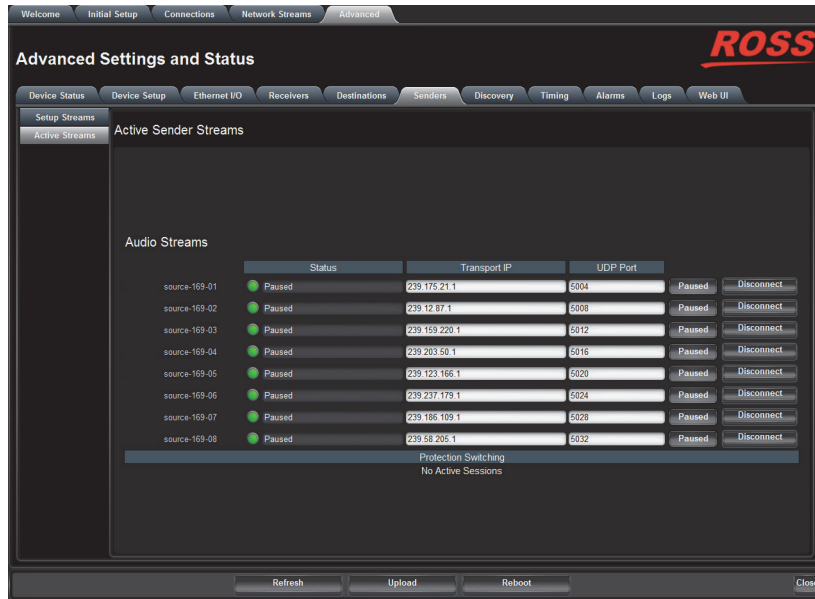
Item	Parameters	Description
Add Stream		Enables you to configure a new stream
Remove Stream		Deletes the selected stream
Status (read-only)	Active (Green)	Sender stream is active
	Error:	Reports a specific error condition that is occurring
	Not Applied	Stream was added but not yet assigned
Source Name	<text>	Provides a unique identifier for the stream. This name is used to identify the data within your network.
Codec	#	Specifies the transmission standard the network stream will use
<b>Primary Stream</b>		
Transport IP	#	Specifies the IP Address for the audio essence
UDP Port	#	Specifies the port associated with the IP address and the communication protocol for the audio essence
<b>Protection Switching</b>		
Transport IP	#	Specifies the IP Address for the redundant audio essence. This is the same IP Address that is specified for the primary audio stream.

**Table 17.14 Senders Tab — Setup Streams**

Item	Parameters	Description
UDP Port	#	Specifies the port associated with the IP address and the communication protocol for the redundant audio essence. This value must be different than the value specified for the primary audio stream.
<b>Auto Create Audio Source</b>		
Set Default Audio		Click this button to automatically assign the first available consecutive MADI channels (based on the Audio Channel Count Mode value) to the target stream.
<b>Channel Map</b>		
MADI Channels	#	Use this area to select the audio channels available from each configured MADI stream
Target	1-#	Use this area to assign the selected MADI channels to the session you are configuring

**Active Streams Tab**

The Active Streams provides monitoring options and read-only status fields for the connected audio streams.



*Figure 17.15 Example of the Advanced > Senders > Active Streams Tab*

Table 17.14 outlines the read-only fields in the Active Streams tab.

**Table 17.15 Senders Tab — Active Streams**

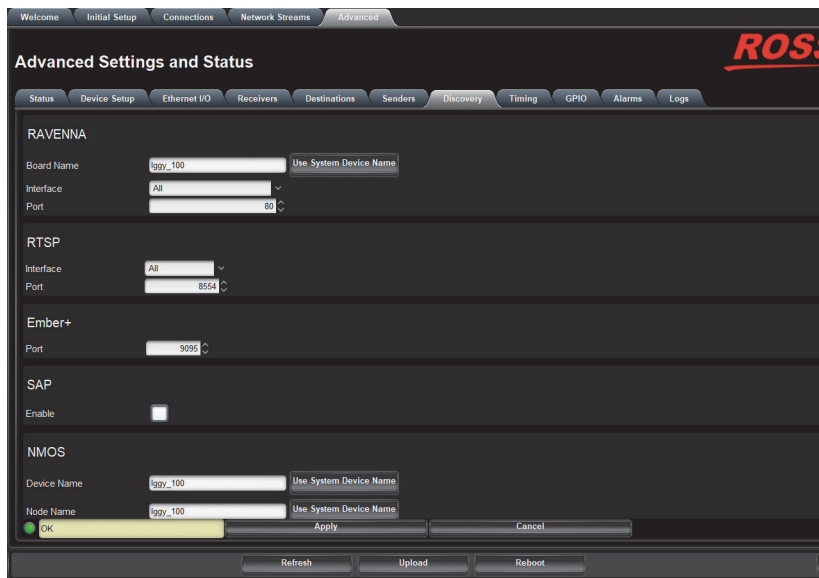
Item	Parameters	Description
<b>Audio Streams</b>		

**Table 17.15 Senders Tab — Active Streams**

Item	Parameters	Description
Status	OK (Green)	The sender streams are operating correctly without errors
	Paused (Green)	Sender stream is paused and not sending data
	Alarm Suppressed (Green)	An alarm condition is present, but the alarm is disabled on the Alarm Enable tab
	System Clock in Failure (Red)	The IGGY-MADI is unable to obtain a stable clock source. Sessions cannot be created until this condition is fixed.  It is recommended to navigate to the Advanced > Timing > PTP tab to check the status of the PTP and update the Configuration settings.
Transport IP	###.###	Indicates the IP Address for the audio session
UDP Port	#	Indicates the port associated with the IP address and the communication protocol for the audio essence
<b>Protection Switching</b>		
Transport IP	###.###	Indicates the IP Address for the audio session assigned to Protection Switching
UDP Port	#	Indicates the port associated with the IP address and the communication protocol for the audio essence assigned to Protection Switching

## Discovery Tab

The Discovery tab provides options for configuring communications via the supported transport protocols.



**Figure 17.16 Example of the Advanced > Discovery Tab**

Table 17.16 summarizes the options displayed in the Discovery tab.

**Table 17.16 Discovery Tab**

Item	Parameters	Description
<b>RAVENNA</b>		
Board Name	<text>	Assigns a unique identifier for the IGGY-MADI when communicating with RAVENNA-based devices. The default name is <b>Ross-Iggy-MADI</b> .
	Use System Device Name	Applies the identifier to the IGGY-MADI as provided by the master RAVENNA device
Interface	Control RJ-45	The IGGY-MADI uses its CONTROL port for RAVENNA communications
	NET #	The IGGY-MADI uses the specified NET port on the IGGY-MADI for RAVENNA communications
	All	The IGGY-MADI accepts RAVENNA requests via the CONTROL and all NET ports
Port	#	Specifies the communications port on the network that the IGGY-MADI uses for RAVENNA communications. The default is 80.
<b>RTSP</b>		
Interface	Control RJ-45	The IGGY-MADI uses its CONTROL port for RTSP communications
	NET #	The IGGY-MADI uses the specified physical NET port for RTSP communications
Interface	All	The IGGY-MADI accepts RTSP requests via the CONTROL and all NET ports
Port	#	Specifies the TCP port the protocol uses to send and receive messages. The default is 8554.
<b>Ember+</b>		
Port	#	Specifies the communications port on the network that the IGGY-MADI uses for Ember+ communications. The default is 9095.
<b>SAP</b>		
Enable	Selected	The IGGY-MADI will use the Session Announcement Protocol (SAP) to broadcast multicast session information.
	Cleared	Disables this feature
<b>NMOS</b>		
Device Name	<text>	Assigns a unique identifier for IGGY-MADI when communicating with NMOS-based devices. The default name is <b>Ross-Iggy-MADI</b> .
	Use System Device Name	Applies the identifier to the IGGY-MADI as provided by the master NMOS device

**Table 17.16 Discovery Tab**

Item	Parameters	Description
Node Name	<text>	Name of the NMOS node being advertised. The default name is <b>IGGY_MADI_#</b> where # represents the module serial number
	Use System Device Name	Applies the identifier to the NMOS mode as provided by the master NMOS device
Enable	Selected	The IGGY-MADI is available as an NMOS device
	Cleared	The IGGY-MADI is not advertised as an NMOS device
Interface	Control RJ-45	The IGGY-MADI uses its CONTROL port for NMOS communications
	NET #	The IGGY-MADI uses the specified NET port for NMOS communications
	All	The IGGY-MADI accepts NMOS requests via the CONTROL and all NET ports
SDP Port	#	Specifies the SDP HTTP port used to GET SDPS. The default is 8081.

## Timing Tab

The system timing options for the IGGY-MADI are organized into the following sub-tabs displayed on the left pane of the Timing tab: PTP and Outputs.



**Figure 17.17** Example of the Advanced > Timing > PTP Tab

## PTP Tab

Use the PTP tab to configure the PTP client settings for the IGGY-MADI. This is also where the IGGY-MADI is displays an active Grandmaster.

**Table 17.17** summarizes the options displayed in the PTP tab.

**Table 17.17 Timing Tab — PTP**

Item	Parameters	Description
<b>Configuration</b>		
Slave Only	Selected	Defines the IGGY-MADI as a slave only device in the system; the module cannot be used as a Grandmaster or Master device
	Cleared	Enables the IGGY-MADI to be used as a Grandmaster or Master device
Profile	IEEEE 1588 Default	Specifies the IGGY-MADI timing uses IEEE1588 standard
	AES67 Media	Specifies the IGGY-MADI timing uses AES67 Media standard
	SMPTE ST 2059-2	Specifies the IGGY-MADI timing uses SMPTE ST 2059-2 standards. This is the recommended setting.
Custom PTP Profile	Selected	The Domain, Priority1, Priority2, Role status, Sync Interval, Announce Interval and Announce Receipt Timeout fields can be edited to create a custom PTP profile
	Cleared	The current settings in the Domain, Priority1, Priority2, Role status, Sync Interval, Announce Interval and Announce Receipt Timeout fields are set to read-only.
Domain	#	Specifies that the IGGY-MADI is within the specified group of clocks in your network
Priority1	#	Assigns the first priority level to the IGGY-MADI during a Grandmaster election where a value of: <ul style="list-style-type: none"> <li>• 1 is the highest priority</li> <li>• 255 is the lowest priority</li> </ul> This menu is applicable when the Slave Only box is not selected
Priority2	#	Assigns the secondary priority level to the IGGY-MADI during a Grandmaster election where a value of: <ul style="list-style-type: none"> <li>• 1 is the highest priority</li> <li>• 255 is the lowest priority</li> </ul> This menu is applicable when the Slave Only box is not selected
<b>NET #</b>		
Role Status	#	Indicates the role that the specified port is assigned to in the network system
Sync Interval	#	Specifies how often the NET port on the IGGY-MADI sends Sync messages
Announce Interval	#	Specifies how often the NET port on the IGGY-MADI sends Announce messages

**Table 17.17 Timing Tab — PTP**

Item	Parameters	Description
Announce Receipt Timeout	#	Controls how long the NET port on the IGGY-MADI will wait before declaring the Grandmaster absent and initiating a new election
<b>Status (read-only)</b>		
Current Reference	PTP SLAVE	Specifies that the IGGY-MADI is a Slave; using that system clock as the reference
	INTERNAL OSCILLATOR	Specifies that the IGGY-MADI is a Master; using that system clock as the reference
System Status	Locked	Status of PTP on the system
	Free run	
Interface Status	Locked	Status of PTP on the interface
	Acquiring	
	Failed	
<b>Local (read-only)</b>		
Local ID	#	Reports the ID number assigned to the IGGY-MADI within the system
Mean Path Delay (ns)	#	Average time in nanoseconds it takes a packet to traverse end to end from the PTP master
Offset From Master (ns)	#	Correction time offset from the master in nanoseconds
Min Delay Request Interval	#	Specifies how long the IGGY-MADI will wait for a delay request
<b>Grandmaster</b>		
Grandmaster ID	#	Reports the ID number assigned to the Grandmaster within the system
Priority1	#	Standard PTP fields used to determine who wins a PTP election
Priority2	#	
Clock Accuracy	#	Standard PTP field that states the accuracy of the system clock on the system
Clock Class	#	Standard PTP field that states the class of the clock used on the system

## Outputs Tab

The Outputs tab automatically displays in the DashBoard window. The Outputs tab enables you to adjust the timing of the MADI output.

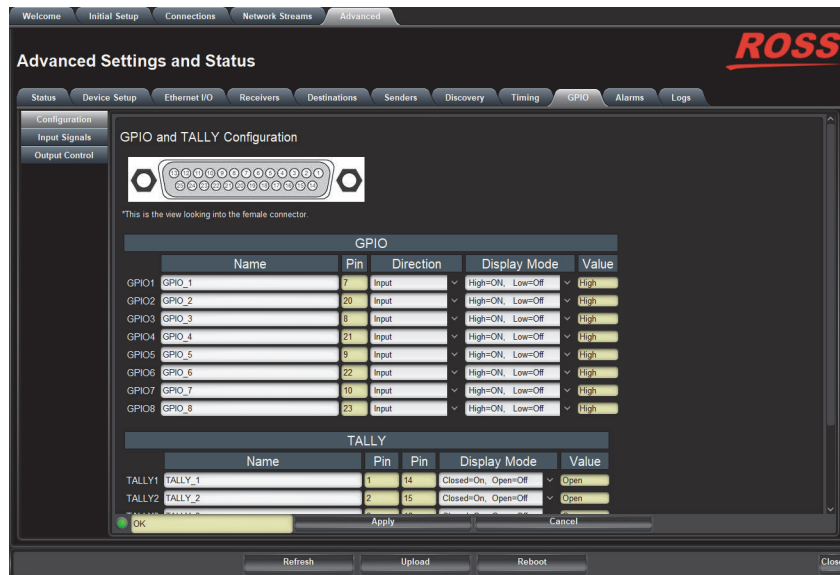
**Table 17.18** summarizes the options displayed in the Outputs tab.

**Table 17.18 Timing Tab — Outputs**

Item	Parameters	Description
Default Delay	Selected	The default for audio delay change based on the audio packet time set on the device: <ul style="list-style-type: none"> <li>• If the audio packet time is 1ms (1000us) to default video delay is 20000us and audio delay is 20000us</li> <li>• If the audio packet time is 125us to default video delay is 2000us and audio delay is 2000us</li> </ul>
	Cleared	IGGY-MADI applies the delay and offset settings in the Outputs tab for the specified signal
Audio Offset	#	Changes the link offset values used when a receiver is setup
Audio Delay (read-only)	#	Reports the audio output delay relative to the selected reference

## GPIO Tabs

The GPIO tabs enable you to configure the GPIO ports of the IGGY-MADI.



**Figure 17.18** Example of the Advanced > GPIO > Configuration Tab

Configuration Tab

Table 17.18 summarizes the options displayed in the GPIO > Configuration tab.

**Table 17.19 GPIO — Configuration Tab**

Item	Parameters	Description
<b>GPIO #</b>		
Name	<text>	Assigns a unique identifier to the GPIO signal
Pin (read-only)	#	Reports the physical pin of the GPIO port that is assigned to this GPIO signal
Direction	Input	The pin on the GPIO port receives an input signal from an external source
	Output	The pin on the GPIO port sends a signal to the connected external device
Display Mode	Do not display	
	High=ON, Low=OFF	
	High=Off, Low=On	
	High=Err, Low=OK	
	High=OK, Low=Err	
	High=Alert, Low=OK	
Value	#	
<b>TALLY #</b>		
Name	<text>	Assigns a unique identifier to the tally signal
Pin (read-only)	#	Reports the physical pins of the GPIO port that is assigned to this tally signal
Display Mode	Do not display	
	Closed=On, Open=Off	
	Closed=Off, Open=On	
Value	#	
Show Input Signals as Top Level Tab	Selected	
	Cleared	
Show Output Control as Top Level Tab	Selected	
	Cleared	

## Alarms Tab

The **Alarms** tab enables you to manage the type of alarms the IGGY-MADI reports.

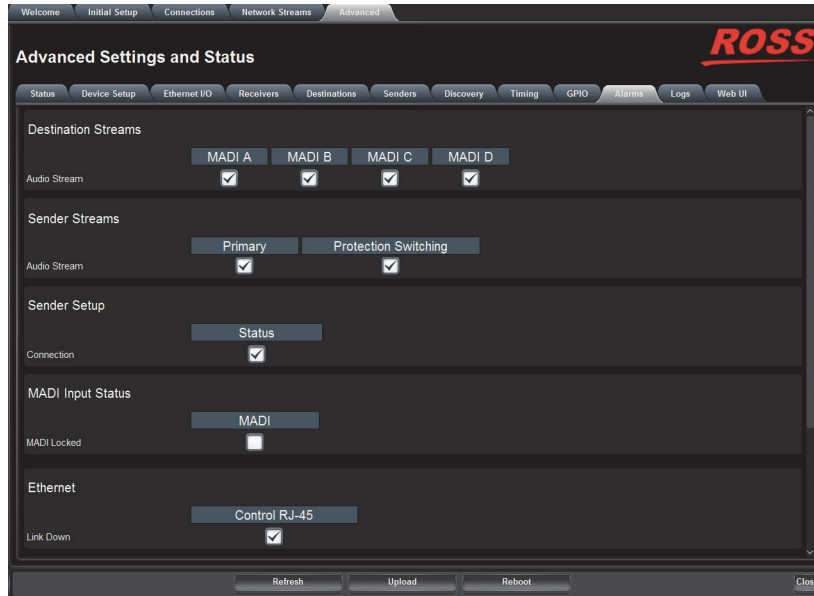


Figure 17.19 Example of the Advanced > Alarms Tab

★ All alarms are enabled by default.

Table 17.20 summarizes the options displayed in the Alarms tab.

Table 17.20 Alarms Tab

Item	Parameters	Description
<b>Destination Streams - MADI #</b>		
Audio Stream	Selected	Enables the monitoring of the audio stream. The status is reported in the Destinations area of the Connections tab.
	Cleared	Disables monitoring of this stream
<b>Sender Streams — Primary, Protection Switching</b>		
Audio Stream	Selected	The Advanced > Senders > Active Streams tab monitors the configured audio streams of the IGGY-MADI
	Cleared	Disables monitoring of the sender audio stream(s)
<b>Sender Setup -Status</b>		
Connection	Selected	Changes made to the Advanced > Senders > Setup Streams tab are reported in the Advanced > Status > Device tab
	Cleared	Disables monitoring of the menus on the Advanced > Senders tab. The Senders Status and Changes field in the Advanced > Device tab does not report any issues.
<b>MADI Input Status</b>		

**Table 17.20 Alarms Tab**

Item	Parameters	Description
MADI Locked	Selected	Enables the monitoring of the MADI signal and when it is locked to PTP
	Cleared	Disables the global MADI Lock status reporting
<b>Ethernet - Control RJ-45</b>		
Link Down	Selected	Enables the monitoring of the IGGY-MADI and your facility network. If a link is not detected, an error message displays in the Ethernet > Link Status.
	Cleared	Disables monitoring of the communications between the IGGY-MADI and your facility network
<b>NET - NET #</b>		
Link Down	Selected	The corresponding field in the Ethernet I/O tab reports when a link is not detected
	Cleared	Disables monitoring of the link status of the specified NET port
<b>PTP Status - System and Interface Status</b>		
PTP Clock	Selected	The System Clock Status field reports when the connection to the PTP clock is lost
	Cleared	Disables monitoring of the PTP Clock status

## Logs Tab

The Logs tab is organized into two sub-tabs: System Log and Captures.

### System Log Tab

The System Log tab provides a system log interface that reports tasks, messages, and other operating information in a table format. This is useful when troubleshooting with the help of Ross Technical Support.

### Captures Tab

The Captures tab displays a list of log entries that were captured.

**Table 17.21** summarizes the options displayed in the Captures tab.

**Table 17.21 Logs Tab — Captures**

Item	Parameters	Description
Name	<text>	Lists the recent debug, core, and PCAP files currently available for download. Select the Refresh button in the top right corner to update the list.
Size (bytes)	#	Indicates the size of the file
Request Debug		Creates a file that captures the log entries and device status information of the IGGY-MADI

**Table 17.21 Logs Tab — Captures**

<b>Item</b>	<b>Parameters</b>	<b>Description</b>
Duration [s]	#	Specifies the length of time (in seconds) to perform a packet capture (PCAP)
Packet Capture		Captures a PCAP file on the port specified in the Interface menu
Interface	eth0	Captures a PCAP file for the CONTROL port of the IGGY-MADI
	eth1	Captures a PCAP file for the NET 1 port of the IGGY-MADI
	eth2	Captures a PCAP file for the NET 2 port of the IGGY-MADI

# Technical Specifications

This chapter provides technical information for IGGY-MADI.

★ Specifications are subject to change without notice.

## CONTROL Port

**Table 18.1 Technical Specifications — Control Port**

Item	Specifications
Number of CONTROL Ports	1
Standards Accommodated	100/1000BASE-T
Connector Type	Locking GigE XLR RJ45

## NET 1 and NET 2 Ports

**Table 18.2 Technical Specifications — NET 1 and NET 2 Ports**

Item	Specifications
Number of NET Ports	2
Standards Accommodated	100/1000BASE-T NET 1 port only: 802.3af (802.3at Type 1) Power Over Ethernet
Connector Type	Locking GigE XLR RJ45

## Tally/GPIO Port

**Table 18.3 Technical Specifications — Tally/GPIO Port**

Item	Specifications
<b>Tally</b>	
Type	Contact closure
Input Voltage	35V AC/DC
Maximum Current	120mA per output
On Resistance (max.)	8ohms
<b>GPIO</b>	
Type	Pull high
Vin Max Range	-0.5V to +5.5V
Vin Low	-0.5V to +0.8V
Vin High	+2V to +5.5V
Vout High	+4.0V min
Iout Low	15mA min

## Reference Clock

**Table 18.4 Technical Specifications — Reference Clock**

Item	Specifications
<b>Input</b>	
Termination Options	75ohm or HiZ
Input Voltage	5V TTL compatible
Frequency	44kHz
Connector Type	DC Coupled
	75ohm BNC
<b>Output</b>	
Output Voltage	5V TTL compatible output, 3.8V max.
Frequency	44kHz
Connector Type	DC Coupled
	75ohm BNC

## Power

**Table 18.5 Technical Specifications — Power**

Item	Specifications
NET 1 Port only	37V to 57V
PoE 802.3af (802.3at Type)	750mA max.
Wall Adapter	15V
	560mA max.
Maximum Power	8.4W

## Environment

**Table 18.6 Technical Specifications — Environment**

Item	Specifications
Maximum Ambient Temperature	40°C (104°F)

## Dimensions

**Table 18.7 Technical Specifications — Dimensions**

Item	Specifications
Physical Dimensions	5.74" x 6.70" x 1.63" (14.60cm x 17.1cm x 4.15cm)
Weight	2.20lb (998g)

# Supported SFP Models

This chapter provides additional information on the Small Form Pluggable (SFP) modules that can be installed in the **MADI** port of the IGGY-MADI.

★ Specifications are subject to change without notice.

## SFP-MADI-COAX

The SFP-MADI-COAX is an electrical SFP Transceiver module designed to transmit and receive MADI signals of 125Mbps over 75Ω coaxial cables via HD-BNC connectors.

### Features

- AES10-2008 compliant
- HD-BNC 75Ω connectors
- Equalizes Belden 1694A cable up to 300m
- Integrated Tx Cable Driver with output impedance of 75Ω ±2Ω
- Hot-pluggable
- Low Power Consumption - typical 427mW
- Single Supply +3.3V
- Operating temperature range: -40°C to 80°C
- SFP package size: 58.5mm x 13.4mm x 8.6mm

### Functional Description

The SFP-MADI-COAX transceiver is a Small Form Factor Pluggable (SFP) module with coaxial interface. HD-BNC connectors are used to interface the module with 75Ω coaxial cables. The SFP-MADI-COAX contains a cable driver for transmission of the MADI signal, and an automatic cable equalizer of reception of a MADI signal.

### Module Installation

The module is simply inserted, small end first, under manual pressure. Controlled hot plugging is ensured by design. The module housing makes initial contact with the router board EMI shield, mitigating potential damage due to Electrostatic Discharge (ESD).

### Absolute Maximum Ratings

Exceeding any of these ratings may permanently damage the module. Exposure to absolute maximum rating conditions for extended periods may affect device reliability.

**Table 19.1 SFP-MADI-COAX — Absolute Maximum Ratings**

Parameter	Min.	Max.	Notes
Supply Voltage	0V	3.6V	
Operating Case Temperature	-40°C	+80°C	Measured on the top side of the module
Storage Temperature	-40°C	+85°C	
Operating Relative Humidity	5%	95%	Non-condensing
ESD Rating		1kV	HBM

## Recommended Operating Conditions

**Table 19.2 SFP-MADI-COAX — Recommended Operating Conditions**

Parameter	Min.	Typical	Max.	Notes
Supply Voltage	3.13V	3.3V	3.465V	
Operating Case Temperature	-40°C		+80°C	
Serial Data Rate		125Mbps		

## MADI Receive Characteristics

**Table 19.3 SFP-MADI-COAX — MADI Receive Specifications**

Parameter	Min.	Typical	Max.	Notes
Input Voltage Swing	150mVp-p		950mVp-p	
Input Return Loss	30dB			Bandwidth up to 150MHz
Input Impedance	73Ω	75Ω	77Ω	Bandwidth up to 150MHz
Cable Length (Belden 1694A)		300m		MADI

## MADI Transmit Characteristics

**Table 19.4 SFP-MADI-COAX — MADI Transmit Specifications**

Parameter	Min.	Typical	Max.	Notes
Output Voltage Swing	300mV		600mV	75Ω load
Output Return Loss	25dB			Bandwidth up to 150MHz
Output Impedance	73Ω	75Ω	77Ω	Bandwidth up to 150MHz
Additive Jitter		15psp-p		
Rise/Fall Time (80-20%)	1ns		3ns	75Ω load
Mismatched in Rise-Fall Time			0.5ns	75Ω load, measured at average amplitude point

## Mechanical Specifications

Table 19.5 provides a brief list of the SFP-MADI-COAX mechanical features.

**Table 19.5 SFP-MADI-COAX — Mechanical Features**

Parameter	Specifications
Connector Type	HD-BNC (75Ω)
Plug Diameter	Up to 7.8mm external HD-BNC plug diameter (standard)
Mechanical release	Simple pull up mechanical release system to disengage the module from its cage

Figure 19.1 outlines the physical channel position of the SFP-MADI-COAX.

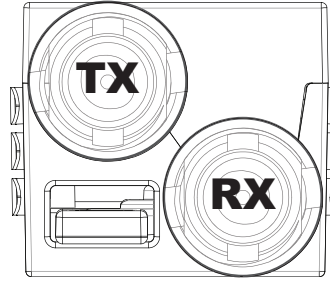


Figure 19.1 SFP-MADI-COAX, Front View — Channel Position

## SFP-MADI-1310SM

The SFP-MADI-1310SM transmits and receives MADI signals. It contains a PIN photo diode receiver and a 1310nm Fabry-Pérot laser transmitter designed to provide error-free transmission of signals from 50Mbps to 3Gbps over single mode fiber (9/125).

### Features

- Best-in-class optical receiver sensitivity: -22dBm
- Robust error free transmission of signals from 50Mbps to 3Gbps with up to 30km single-mode fiber
- Hot-pluggable
- Laser disable pin
- Single +3.3V power supply
- Operating temperature range: -25°C to 85°C
- SFP package size: 56.5mm x 13.4mm x 8.6mm

### Absolute Maximum Ratings

Exceeding any of these ratings may permanently damage the module. Exposure to absolute maximum rating conditions for extended periods may affect device reliability.

Table 19.6 SFP-MADI-1310SM — Absolute Maximum Ratings

Parameter	Value
Supply Voltage	4V
Operating Case Temperature	-25°C to 85°C
Storage Temperature	-40°C to 85°C
Operating Relative Humidity	±1kV HBM
ESD Rating	5%-95% RH

### Optical Performance Specifications

Table 19.7 SFP-MADI-1310SM — Optical Performance Specifications, Transmitter

Parameter	Min.	Typical	Max.	Notes
Wavelength	1280nm	1310nm	1340nm	Measured at 25°C
Spectral Line Width (RMS)		1.5nm	3nm	
Average Optical Output Power	-5dBm	-2dBm	0dBm	

**Table 19.7 SFP-MADI-1310SM — Optical Performance Specifications, Transmitter**

Parameter		Min.	Typical	Max.	Notes
Extinction Ratio		7dB			
Optical Signal Intrinsic Jitter	2.97Gbps, 1.485Gbps 270Mbps PRBS		30ps	60ps	
	2.97Gbps SMPTE 424M Pathological		50ps	70ps	
	1.485Gbps SMPTE 292M Pathological		60ps	100ps	
	270Mbps SMPTE 259M Pathological		110ps	180ps	
Optical Signal Rise Time (20-80%) 2.97Gbps SMPTE 424M				135ps	
Optical Signal Fall Time (20-80%) 2.97Gbps SMPTE 424M				135ps	
Laser Power Monitoring Accuracy		-2dB		+2dB	

**Table 19.8 SFP-MADI-1310SM — Optical Performance Specifications, Receiver**

Parameter	Min.	Typical	Max.	Notes
Wavelength	1260nm		1620nm	
Sensitivity (ER=7dB)		-25dBm	-22dBm	The sensitivity and the overload specifications refer to the input power levels for BER=1E <sup>-12</sup> against PRBS and pathological pattern at SMPTE 259M, 292M, and 424M rates.
Overload	0dBm			
Loss of Signal Asserted <sup>a</sup>	-31dBm			
Loss of Signal De-asserted <sup>a</sup>			-23dBm	
Loss of Signal Optical Hysteresis <sup>a</sup>	0.5dB			
Maximum Back Reflection			-27dB	
Input Power Monitoring Accuracy	-2dB		2dB	

a. Condition: 2.97Gbps PRBS, ER=7dB

## Physical Channel Position

Figure 19.2 outlines the physical channel position of the SFP-MADI-1310SM.

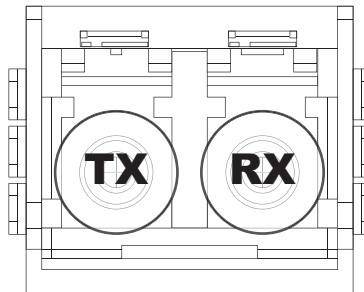


Figure 19.2 SFP-MADI-1310SM, Front View — Channel Position

## SFP-MADI-850MM

The SFP-MADI-850MM is an optical transceiver module designed to transmit and receive electrical and optical audio signals as defined in AES10.

A highly-reliable 850nm wavelength Vertical Cavity Surface Emitting Laser (VCSEL) is used in the transmitter. The transceivers satisfy Class I Laser Safety requirements in accordance with the U.S. FDA/CDRH and international IEC-60825 standards.

### Features

- Suitable for AES10 transmission and receiving
- Best-in-class optical receiver sensitivity: -22dBm
- Robust error free transmission of signals from 50Mbps to 3Gbps with up to 500m (50µm multi-mode fiber)
- Hot-pluggable
- Operating temperature range from -5°C to +70°C

### Absolute Maximum Ratings

Exceeding any of these ratings may permanently damage the module. Exposure to absolute maximum rating conditions for extended periods may affect device reliability.

**Table 19.9 SFP-MADI-850MM — Absolute Maximum Ratings**

Parameter	Min.	Max.	Notes
Supply Voltage	-0.5V	4V	
Case Operating Temperature	-5°C	70°C	Measured on the top side of the module at the front center vent hole of the cage
Storage Temperature	-40°C	+85°C	
Relative Humidity	5%	95%	Non-condensing

### Transmitter Performance Characteristics

**Table 19.10 SFP-MADI-850MM — Transmitter Specifications**

Parameter	Min.	Typical	Max.	Notes
Data Rate	0.05Gbps		3Gbps	
Center Wavelength	830nm	850nm	860nm	
Spectral Width			1nm	
Average Optical Output Power	-8dBm		-3dBm	
Extinction Ratio	6dB			
Relative Intensity Noise		-110dB/Hz	-118dB/Hz	

**Table 19.10 SFP-MADI-850MM — Transmitter Specifications**

Parameter		Min.	Typical	Max.	Notes
Optical Signal Rise Time (20%-80%) <sup>a</sup>	SMPTE 424M 2.97Gbps			165ps	
	SMPTE 292M 1Gbps			270ps	
	SMPTE 344M 540Mbps			800ps	
	SMPTE 259M 143Mbps			1500ps	
Laser Power Monitoring Accuracy		-2dB		+2dB	

a. Rise/fall times are measured unfiltered.

## Receiver Performance Characteristics

**Table 19.11 SFP-MADI-850MM — Receiver Specifications**

Parameter		Min.	Typical	Max.	Notes
Data Rate		0.05Gbps		3Gbps	
Center Wavelength		780nm		880nm	
Sensitivity <sup>a</sup>	SMPTE 259M, SMPTE 344M, PRBS 2 <sup>23</sup> -1			-15dBm	
	SMPTE 292M Pathological, SMPTE 424M Pathological			-13dBm	
Overload		0dBm			
LOS Thresholds <sup>b</sup>	Increasing Light Input			-18dBm	
	Decreasing Light Input	-28dBm			
LOS Hysteresis		1dB		6dB	
Input Power Monitoring Accuracy		-2dB		+2dB	

a. Specified at a BER of 10<sup>-12</sup>.

b. Specified with a PRBS of 2.97Gbps signal, ER=7dB.

## Physical Channel Position

**Figure 19.3** outlines the physical channel position of the SFP-MADI-850MM.

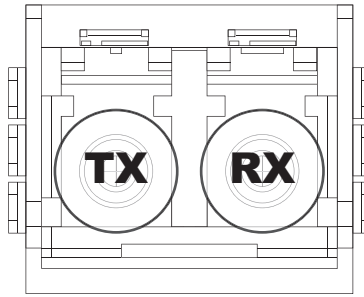


Figure 19.3 SFP-MADI-850MM, Front View — Channel Position



# Service Information

This chapter provides information on the warranty and repair policy for your IGGY-MADI.

## Troubleshooting Checklist

Routine maintenance to this Ross product is not required. In the event of problems with your IGGY-MADI, the following basic troubleshooting checklist may help identify the source of the problem. If the IGGY-MADI still does not appear to be working properly after checking all possible causes, please contact your Ross products distributor, or the Technical Support department at the numbers listed under the “**Contacting Technical Support**” on page 12.

1. Visual Review — Performing a quick visual check may reveal many problems, such as connectors not properly seated or loose cables. Check the IGGY-MADI and any associated peripheral equipment for signs of trouble.
2. Power Check — Verify the PWR LED on the IGGY-MADI chassis for the presence of power. If the PWR LED is not illuminated, verify that the power cable is connected to a power source and that power is available at the power main. If the PWR LED is still not illuminated, replace the power supply with one that is verified to work.
3. Input Signal Status — Verify that source equipment is operating correctly and that a valid signal is supplied.
4. Output Signal Path — Verify that destination equipment is operating correctly and receiving a valid signal.
5. Module Exchange — Exchanging a suspect module with a module that is known to be working correctly is an efficient method for localizing problems to individual modules.
6. Re-load the Factory Defaults — If the module appears to be working and reports no errors, but is not generating an active picture or outputs black, restoring the default factory configuration may fix the problem.

## Warranty and Repair Policy

The IGGY-MADI is warranted to be free of any defect with respect to performance, quality, reliability, and workmanship for a period of ONE (1) year from the date of delivery to the customer. In the event that your IGGY-MADI proves to be defective in any way during this warranty period, Ross Video Limited reserves the right to repair or replace this piece of equipment with a unit of equal or superior performance characteristics.

Should you find that this IGGY-MADI has failed after your warranty period has expired, we will repair your defective product should suitable replacement components be available. You, the owner, will bear any labor and/or part costs incurred in the repair or refurbishment of said equipment beyond the ONE (1) year warranty period.

In no event shall Ross Video Limited be liable for direct, indirect, special, incidental, or consequential damages (including loss of profits) incurred by the use of this product. Implied warranties are expressly limited to the duration of this warranty.

This IGGY-MADI User Guide provides all pertinent information for the safe installation and operation of your IGGY-MADI. Ross Video policy dictates that all repairs to the IGGY-MADI are to be conducted only by an authorized Ross Video Limited factory representative. Therefore, any unauthorized attempt to repair this product, by anyone other than an authorized Ross Video Limited factory representative, will automatically void the warranty. Please contact Ross Video Technical Support for more information.

## In Case of Problems

Should any problem arise with your IGGY-MADI, please contact the Ross Video Technical Support Department. (Contact information is supplied at in the section “**Contacting Technical Support**” on page 12.)

A Return Material Authorization number (RMA) will be issued to you, as well as specific shipping instructions, should you wish our factory to repair your IGGY-MADI. If required, a temporary replacement will be made available at a nominal charge. Any shipping costs incurred will be the responsibility of you, the customer. All products shipped to you from Ross Video Limited will be shipped collect.

The Ross Video Technical Support Department will continue to provide advice on any product manufactured by Ross Video Limited, beyond the warranty period without charge, for the life of the equipment.

# Software Licenses

This chapter provides third-party software license information for your IGGY-MADI. This product includes multiple software components which are individually licensed under one or more of the following licenses included in this chapter.

## BSD

Copyright (c) 1991,1993, The Regents of the University of California. All rights reserved.

This code is derived from software contributed to Berkeley by Kenneth Almquist.

Redistribution and use in source and binary forms, with or without modification, are permitted provided that the following conditions are met:

1. Redistributions of source code must retain the above copyright notice, this list of conditions and the following disclaimer.
2. Redistributions in binary form must reproduce the above copyright notice, this list of conditions and the following disclaimer in the documentation and/or other materials provided with the distribution.
3. <BSD Advertising Clause omitted per the July 22, 1999 licensing change <ftp://ftp.cs.berkeley.edu/pub/4bsd/README.Impt.License.Change>> California, Berkeley and its contributors.
4. Neither the name of the University nor the names of its contributors may be used to endorse or promote products derived from this software without specific prior written permission.

THIS SOFTWARE IS PROVIDED BY THE REGENTS AND CONTRIBUTORS "AS IS" AND ANY EXPRESS OR IMPLIED WARRANTIES, INCLUDING, BUT NOT LIMITED TO, THE IMPLIED WARRANTIES OF MERCHANTABILITY AND FITNESS FOR A PARTICULAR PURPOSE ARE DISCLAIMED. IN NO EVENT SHALL THE REGENTS OR CONTRIBUTORS BE LIABLE FOR ANY DIRECT, INDIRECT, INCIDENTAL, SPECIAL, EXEMPLARY, OR CONSEQUENTIAL DAMAGES (INCLUDING, BUT NOT LIMITED TO, PROCUREMENT OF SUBSTITUTE GOODS OR SERVICES; LOSS OF USE, DATA, OR PROFITS; OR BUSINESS INTERRUPTION) HOWEVER CAUSED AND ON ANY THEORY OF LIABILITY, WHETHER IN CONTRACT, STRICT LIABILITY, OR TORT (INCLUDING NEGLIGENCE OR OTHERWISE) ARISING IN ANY WAY OUT OF THE USE OF THIS SOFTWARE, EVEN IF ADVISED OF THE POSSIBILITY OF SUCH DAMAGE.

## Dual GPL

Portions of this software are copyright (C) 1996-2002 The FreeType Project ([www.freetype.org](http://www.freetype.org)). All rights reserved.

This project is also covered under the GPL v2.

## GPL

GNU GENERAL PUBLIC LICENSE  
Version 3, 29 June 2007  
Copyright (C) 2007 Free Software Foundation, Inc. <<http://fsf.org/>>  
Preamble

The GNU General Public License is a free, copyleft license for software and other kinds of works.

The licenses for most software and other practical works are designed to take away your freedom to share and change the works. By contrast, the GNU General Public License is intended to guarantee your freedom to share and change all versions of a program—to make sure it remains free software for all its users. We, the Free Software Foundation, use the GNU General Public License for most of our software; it applies also to any other work released this way by its authors. You can apply it to your programs, too.

When we speak of free software, we are referring to freedom, not price. Our General Public Licenses are designed to make sure that you have the freedom to distribute copies of free software (and charge for them if you wish), that you receive source code or can get it if you want it, that you can change the software or use pieces of it in new free programs, and that you know you can do these things.

To protect your rights, we need to prevent others from denying you these rights or asking you to surrender the rights. Therefore, you have certain responsibilities if you distribute copies of the software, or if you modify it: responsibilities to respect the freedom of others.

For example, if you distribute copies of such a program, whether gratis or for a fee, you must pass on to the recipients the same freedoms that you received. You must make sure that they, too, receive or can get the source code. And you must show them these terms so they know their rights.

Developers that use the GNU GPL protect your rights with two steps: (1) assert copyright on the software, and (2) offer you this License giving you legal permission to copy, distribute and/or modify it.

For the developers' and authors' protection, the GPL clearly explains that there is no warranty for this free software. For both users' and authors' sake, the GPL requires that modified versions be marked as changed, so that their problems will not be attributed erroneously to authors of previous versions.

Some devices are designed to deny users access to install or run modified versions of the software inside them, although the manufacturer can do so. This is fundamentally incompatible with the aim of protecting users' freedom to change the software. The systematic pattern of such abuse occurs in the area of products for individuals to use, which is precisely where it is most unacceptable. Therefore, we have designed this version of the GPL to prohibit the practice for those products. If

such problems arise substantially in other domains, we stand ready to extend this provision to those domains in future versions of the GPL, as needed to protect the freedom of users.

Finally, every program is threatened constantly by software patents. States should not allow patents to restrict development and use of software on general-purpose computers, but in those that do, we wish to avoid the special danger that patents applied to a free program could make it effectively proprietary. To prevent this, the GPL assures that patents cannot be used to render the program non-free.

The precise terms and conditions for copying, distribution and modification follow.

## TERMS AND CONDITIONS

### 0. Definitions.

"This License" refers to version 3 of the GNU General Public License.

"Copyright" also means copyright-like laws that apply to other kinds of works, such as semiconductor masks.

"The Program" refers to any copyrightable work licensed under this License. Each licensee is addressed as "you". "Licensees" and "recipients" may be individuals or organizations.

To "modify" a work means to copy from or adapt all or part of the work in a fashion requiring copyright permission, other than the making of an exact copy. The resulting work is called a "modified version" of the earlier work or a work "based on" the earlier work.

A "covered work" means either the unmodified Program or a work based on the Program.

To "propagate" a work means to do anything with it that, without permission, would make you directly or secondarily liable for infringement under applicable copyright law, except executing it on a computer or modifying a private copy. Propagation includes copying, distribution (with or without modification), making available to the public, and in some countries other activities as well.

To "convey" a work means any kind of propagation that enables other parties to make or receive copies. Mere interaction with a user through a computer network, with no transfer of a copy, is not conveying.

An interactive user interface displays "Appropriate Legal Notices" to the extent that it includes a convenient and prominently visible feature that (1) displays an appropriate copyright notice, and (2) tells the user that there is no warranty for the work (except to the extent that warranties are provided), that licensees may convey the work under this License, and how to view a copy of this License. If the interface presents a list of user commands or options, such as a menu, a prominent item in the list meets this criterion.

### 1. Source Code.

The "source code" for a work means the preferred form of the work for making modifications to it. "Object code" means any non-source form of a work.

A "Standard Interface" means an interface that either is an official standard defined by a recognized standards body, or, in the case of interfaces specified for a particular programming language, one that is widely used among developers working in that language.

The "System Libraries" of an executable work include anything, other than the work as a whole, that (a) is included in the normal form of packaging a Major Component, but which is not part of that Major Component, and (b) serves only to enable use of the work with that Major Component, or to implement a Standard Interface for which an implementation is available to the public in source code form. A "Major Component", in this context, means a major essential component (kernel, window system, and so on) of the specific operating system (if any) on which the executable work runs, or a compiler used to produce the work, or an object code interpreter used to run it.

The "Corresponding Source" for a work in object code form means all the source code needed to generate, install, and (for an executable work) run the object code and to modify the work, including scripts to control those activities. However, it does not include the work's System Libraries, or general-purpose tools or generally available free programs which are used unmodified in performing those activities but which are not part of the work. For example, Corresponding Source includes interface definition files associated with source files for the work, and the source code for shared libraries and dynamically linked subprograms that the work is specifically designed to require, such as by intimate data communication or control flow between those subprograms and other parts of the work.

The Corresponding Source need not include anything that users can regenerate automatically from other parts of the Corresponding Source.

The Corresponding Source for a work in source code form is that same work.

### 2. Basic Permissions.

All rights granted under this License are granted for the term of copyright on the Program, and are irrevocable provided the stated conditions are met. This License explicitly affirms your unlimited permission to run the unmodified Program. The output from running a covered work is covered by this License only if the output, given its content, constitutes a covered work. This License acknowledges your rights of fair use or other equivalent, as provided by copyright law.

You may make, run and propagate covered works that you do not convey, without conditions so long as your license otherwise remains in force. You may convey covered works to others for the sole purpose of having them make modifications exclusively for you, or provide you with facilities for running those works, provided that you comply with the terms of this License in conveying all material for which you do not control copyright. Those thus making or running the covered works for you must do so exclusively on your behalf, under your direction and control, on terms that prohibit them from making any copies of your copyrighted material outside their relationship with you.

Conveying under any other circumstances is permitted solely under the conditions stated below. Sublicensing is not allowed; section 10 makes it unnecessary.

### 3. Protecting Users' Legal Rights From Anti-Circumvention Law.

No covered work shall be deemed part of an effective technological measure under any applicable law fulfilling obligations under article 11 of the WIPO copyright treaty adopted on 20 December 1996, or similar laws prohibiting or restricting circumvention of such measures.

When you convey a covered work, you waive any legal power to forbid circumvention of technological measures to the extent such circumvention is effected by exercising rights under this License with respect to the covered work, and you disclaim any intention to limit operation or modification of the work as a means of enforcing, against the work's users, your or third parties' legal rights to forbid circumvention of technological measures.

#### 4. Conveying Verbatim Copies.

You may convey verbatim copies of the Program's source code as you receive it, in any medium, provided that you conspicuously and appropriately publish on each copy an appropriate copyright notice; keep intact all notices stating that this License and any non-permissive terms added in accord with section 7 apply to the code; keep intact all notices of the absence of any warranty; and give all recipients a copy of this License along with the Program.

You may charge any price or no price for each copy that you convey, and you may offer support or warranty protection for a fee.

#### 5. Conveying Modified Source Versions.

You may convey a work based on the Program, or the modifications to produce it from the Program, in the form of source code under the terms of section 4, provided that you also meet all of these conditions:

- a. The work must carry prominent notices stating that you modified it, and giving a relevant date.
- b. The work must carry prominent notices stating that it is released under this License and any conditions added under section 7. This requirement modifies the requirement in section 4 to "keep intact all notices".
- c. You must license the entire work, as a whole, under this License to anyone who comes into possession of a copy. This License will therefore apply, along with any applicable section 7 additional terms, to the whole of the work, and all its parts, regardless of how they are packaged. This License gives no permission to license the work in any other way, but it does not invalidate such permission if you have separately received it.
- d. If the work has interactive user interfaces, each must display Appropriate Legal Notices; however, if the Program has interactive interfaces that do not display Appropriate Legal Notices, your work need not make them do so.

A compilation of a covered work with other separate and independent works, which are not by their nature extensions of the covered work, and which are not combined with it such as to form a larger program, in or on a volume of a storage or distribution medium, is called an "aggregate" if the compilation and its resulting copyright are not used to limit the access or legal rights of the compilation's users beyond what the individual works permit. Inclusion of a covered work in an aggregate does not cause this License to apply to the other parts of the aggregate.

#### 6. Conveying Non-Source Forms.

You may convey a covered work in object code form under the terms of sections 4 and 5, provided that you also convey the machine-readable Corresponding Source under the terms of this License, in one of these ways:

- a. Convey the object code in, or embodied in, a physical product (including a physical distribution medium), accompanied by the Corresponding Source fixed on a durable physical medium customarily used for software interchange.
- b. Convey the object code in, or embodied in, a physical product (including a physical distribution medium), accompanied by a written offer, valid for at least three years and valid for as long as you offer spare parts or customer support for that product model, to give anyone who possesses the object code either (1) a copy of the Corresponding Source for all the software in the product that is covered by this License, on a durable physical medium customarily used for software interchange, for a price no more than your reasonable cost of physically performing this conveying of source, or (2) access to copy the Corresponding Source from a network server at no charge.
- c. Convey individual copies of the object code with a copy of the written offer to provide the Corresponding Source. This alternative is allowed only occasionally and noncommercially, and only if you received the object code with such an offer, in accord with subsection 6b.
- d. Convey the object code by offering access from a designated place (gratis or for a charge), and offer equivalent access to the Corresponding Source in the same way through the same place at no further charge. You need not require recipients to copy the Corresponding Source along with the object code. If the place to copy the object code is a network server, the Corresponding Source may be on a different server (operated by you or a third party) that supports equivalent copying facilities, provided you maintain clear directions next to the object code saying where to find the Corresponding Source. Regardless of what server hosts the Corresponding Source, you remain obligated to ensure that it is available for as long as needed to satisfy these requirements.
- e. Convey the object code using peer-to-peer transmission, provided you inform other peers where the object code and Corresponding Source of the work are being offered to the general public at no charge under subsection 6d.

A separable portion of the object code, whose source code is excluded from the Corresponding Source as a System Library, need not be included in conveying the object code work.

A "User Product" is either (1) a "consumer product", which means any tangible personal property which is normally used for personal, family, or household purposes, or (2) anything designed or sold for incorporation into a dwelling. In determining whether a product is a consumer product, doubtful cases shall be resolved in favor of coverage. For a particular product received by a particular user, "normally used" refers to a typical or common use of that class of product, regardless of the status of the particular user or of the way in which the particular user actually uses, or expects or is expected to use, the product. A product is a consumer product regardless of whether the product has substantial commercial, industrial or non-consumer uses, unless such uses represent the only significant mode of use of the product.

"Installation Information" for a User Product means any methods, procedures, authorization keys, or other information required to install and execute modified versions of a covered work in that User Product from a modified version of its Corresponding Source. The information must suffice to ensure that the continued functioning of the modified object code is in no case prevented or interfered with solely because modification has been made.

If you convey an object code work under this section in, or with, or specifically for use in, a User Product, and the conveying occurs as part of a transaction in which the right of possession and use of the User Product is transferred to the recipient in perpetuity or for a fixed term (regardless of how the transaction is characterized), the Corresponding Source conveyed under this section must be accompanied by the Installation Information. But this requirement does not apply if neither you nor any third party retains the ability to install modified object code on the User Product (for example, the work has been installed in ROM).

The requirement to provide Installation Information does not include a requirement to continue to provide support service, warranty, or updates for a work that has been modified or installed by the recipient, or for the User Product in which it has been modified or installed. Access to a network may be denied when the modification itself materially and adversely affects the operation of the network or violates the rules and protocols for communication across the network.

Corresponding Source conveyed, and Installation Information provided, in accord with this section must be in a format that is publicly documented (and with an implementation available to the public in source code form), and must require no special password or key for unpacking, reading or copying.

#### 7. Additional Terms.

"Additional permissions" are terms that supplement the terms of this License by making exceptions from one or more of its conditions. Additional permissions that are applicable to the entire Program shall be treated as though they were included in this License, to the extent that they are valid under applicable law. If additional permissions apply only to part of the Program, that part may be used separately under those permissions, but the entire Program remains governed by this License without regard to the additional permissions.

When you convey a copy of a covered work, you may at your option remove any additional permissions from that copy, or from any part of it. (Additional permissions may be written to require their own removal in certain cases when you modify the work.) You may place additional permissions on material, added by you to a covered work, for which you have or can give appropriate copyright permission.

Notwithstanding any other provision of this License, for material you add to a covered work, you may (if authorized by the copyright holders of that material) supplement the terms of this License with terms:

- a. Disclaiming warranty or limiting liability differently from the terms of sections 15 and 16 of this License; or
- b. Requiring preservation of specified reasonable legal notices or author attributions in that material or in the Appropriate Legal Notices displayed by works containing it; or
- c. Prohibiting misrepresentation of the origin of that material, or requiring that modified versions of such material be marked in reasonable ways as different from the original version; or
- d. Limiting the use for publicity purposes of names of licensors or authors of the material; or
- e. Declining to grant rights under trademark law for use of some trade names, trademarks, or service marks; or
- f. Requiring indemnification of licensors and authors of that material by anyone who conveys the material (or modified versions of it) with contractual assumptions of liability to the recipient, for any liability that these contractual assumptions directly impose on those licensors and authors.

All other non-permissive additional terms are considered "further restrictions" within the meaning of section 10. If the Program as you received it, or any part of it, contains a notice stating that it is governed by this License along with a term that is a further restriction, you may remove that term. If a license document contains a further restriction but permits relicensing or conveying under this License, you may add to a covered work material governed by the terms of that license document, provided that the further restriction does not survive such relicensing or conveying.

If you add terms to a covered work in accord with this section, you must place, in the relevant source files, a statement of the additional terms that apply to those files, or a notice indicating where to find the applicable terms.

Additional terms, permissive or non-permissive, may be stated in the form of a separately written license, or stated as exceptions; the above requirements apply either way.

## **8. Termination.**

You may not propagate or modify a covered work except as expressly provided under this License. Any attempt otherwise to propagate or modify it is void, and will automatically terminate your rights under this License (including any patent licenses granted under the third paragraph of section 11).

However, if you cease all violation of this License, then your license from a particular copyright holder is reinstated (a) provisionally, unless and until the copyright holder explicitly and finally terminates your license, and (b) permanently, if the copyright holder fails to notify you of the violation by some reasonable means prior to 60 days after the cessation.

Moreover, your license from a particular copyright holder is reinstated permanently if the copyright holder notifies you of the violation by some reasonable means, this is the first time you have received notice of violation of this License (for any work) from that copyright holder, and you cure the violation prior to 30 days after your receipt of the notice.

Termination of your rights under this section does not terminate the licenses of parties who have received copies or rights from you under this License. If your rights have been terminated and not permanently reinstated, you do not qualify to receive new licenses for the same material under section 10.

## **9. Acceptance Not Required for Having Copies.**

You are not required to accept this License in order to receive or run a copy of the Program. Ancillary propagation of a covered work occurring solely as a consequence of using peer-to-peer transmission to receive a copy likewise does not require acceptance. However, nothing other than this License grants you permission to propagate or modify any covered work. These actions infringe copyright if you do not accept this License. Therefore, by modifying or propagating a covered work, you indicate your acceptance of this License to do so.

## **10. Automatic Licensing of Downstream Recipients.**

Each time you convey a covered work, the recipient automatically receives a license from the original licensors, to run, modify and propagate that work, subject to this License. You are not responsible for enforcing compliance by third parties with this License.

An "entity transaction" is a transaction transferring control of an organization, or substantially all assets of one, or subdividing an organization, or merging organizations. If propagation of a covered work results from an entity transaction, each party to that transaction who receives a copy of the work also receives whatever licenses to the work the party's predecessor in interest had or could give under the previous paragraph, plus a right to possession of the Corresponding Source of the work from the predecessor in interest, if the predecessor has it or can get it with reasonable efforts.

You may not impose any further restrictions on the exercise of the rights granted or affirmed under this License. For example, you may not impose a license fee, royalty, or other charge for exercise of rights granted under this License, and you may not initiate litigation (including a cross-claim or counterclaim in a lawsuit) alleging that any patent claim is infringed by making, using, selling, offering for sale, or importing the Program or any portion of it.

## **11. Patents.**

A "contributor" is a copyright holder who authorizes use under this License of the Program or a work on which the Program is based. The work thus licensed is called the contributor's "contributor version".

A contributor's "essential patent claims" are all patent claims owned or controlled by the contributor, whether already acquired or hereafter acquired, that would be infringed by some manner, permitted by this License, of making, using, or selling its contributor version, but do not include claims that would be infringed only as a consequence of further modification of the contributor version. For purposes of this definition, "control" includes the right to grant patent sublicenses in a manner consistent with the requirements of this License.

Each contributor grants you a non-exclusive, worldwide, royalty-free patent license under the contributor's essential patent claims, to make, use, sell, offer for sale, import and otherwise run, modify and propagate the contents of its contributor version.

In the following three paragraphs, a "patent license" is any express agreement or commitment, however denominated, not to enforce a patent (such as an express permission to practice a patent or covenant not to sue for patent infringement). To "grant" such a patent license to a party means to make such an agreement or commitment not to enforce a patent against the party.

If you convey a covered work, knowingly relying on a patent license, and the Corresponding Source of the work is not available for anyone to copy, free of charge and under the terms of this License, through a publicly available network server or other readily accessible means, then you must either (1) cause the Corresponding Source to be so available, or (2) arrange to deprive yourself of the benefit of the patent license for this particular work, or (3) arrange, in a manner consistent with the requirements of this License, to extend the patent license to downstream recipients. "Knowingly relying" means you have actual knowledge that, but for the patent license, your conveying the covered work in a country, or your recipient's use of the covered work in a country, would infringe one or more identifiable patents in that country that you have reason to believe are valid.

If, pursuant to or in connection with a single transaction or arrangement, you convey, or propagate by procuring conveyance of, a covered work, and grant a patent license to some of the parties receiving the covered work authorizing them to use, propagate, modify or convey a specific copy of the covered work, then the patent license you grant is automatically extended to all recipients of the covered work and works based on it.

A patent license is "discriminatory" if it does not include within the scope of its coverage, prohibits the exercise of, or is conditioned on the non-exercise of one or more of the rights that are specifically granted under this License. You may not convey a covered work if you are a party to an arrangement with a third party that is in the business of distributing software, under which you make payment to the third party based on the extent of your activity of conveying the work, and under which the third party grants, to any of the parties who would receive the covered work from you, a discriminatory patent license (a) in connection with copies of the covered work conveyed by you (or copies made from those copies), or (b) primarily for and in connection with specific products or compilations that contain the covered work, unless you entered into that arrangement, or that patent license was granted, prior to 28 March 2007.

Nothing in this License shall be construed as excluding or limiting any implied license or other defenses to infringement that may otherwise be available to you under applicable patent law.

#### **12. No Surrender of Others' Freedom.**

If conditions are imposed on you (whether by court order, agreement or otherwise) that contradict the conditions of this License, they do not excuse you from the conditions of this License. If you cannot convey a covered work so as to satisfy simultaneously your obligations under this License and any other pertinent obligations, then as a consequence you may not convey it at all. For example, if you agree to terms that obligate you to collect a royalty for further conveying from those to whom you convey the Program, the only way you could satisfy both those terms and this License would be to refrain entirely from conveying the Program.

#### **13. Use with the GNU Affero General Public License.**

Notwithstanding any other provision of this License, you have permission to link or combine any covered work with a work licensed under version 3 of the GNU Affero General Public License into a single combined work, and to convey the resulting work. The terms of this License will continue to apply to the part which is the covered work, but the special requirements of the GNU Affero General Public License, section 13, concerning interaction through a network will apply to the combination as such.

#### **14. Revised Versions of this License.**

The Free Software Foundation may publish revised and/or new versions of the GNU General Public License from time to time. Such new versions will be similar in spirit to the present version, but may differ in detail to address new problems or concerns.

Each version is given a distinguishing version number. If the Program specifies that a certain numbered version of the GNU General Public License "or any later version" applies to it, you have the option of following the terms and conditions either of that numbered version or of any later version published by the Free Software Foundation. If the Program does not specify a version number of the GNU General Public License, you may choose any version ever published by the Free Software Foundation.

If the Program specifies that a proxy can decide which future versions of the GNU General Public License can be used, that proxy's public statement of acceptance of a version permanently authorizes you to choose that version for the Program.

Later license versions may give you additional or different permissions. However, no additional obligations are imposed on any author or copyright holder as a result of your choosing to follow a later version.

#### **15. Disclaimer of Warranty.**

THERE IS NO WARRANTY FOR THE PROGRAM, TO THE EXTENT PERMITTED BY APPLICABLE LAW. EXCEPT WHEN OTHERWISE STATED IN WRITING THE COPYRIGHT HOLDERS AND/OR OTHER PARTIES PROVIDE THE PROGRAM "AS IS" WITHOUT WARRANTY OF ANY KIND, EITHER EXPRESSED OR IMPLIED, INCLUDING, BUT NOT LIMITED TO, THE IMPLIED WARRANTIES OF MERCHANTABILITY AND FITNESS FOR A PARTICULAR PURPOSE. THE ENTIRE RISK AS TO THE QUALITY AND PERFORMANCE OF THE PROGRAM IS WITH YOU. SHOULD THE PROGRAM PROVE DEFECTIVE, YOU ASSUME THE COST OF ALL NECESSARY SERVICING, REPAIR OR CORRECTION.

#### **16. Limitation of Liability.**

IN NO EVENT UNLESS REQUIRED BY APPLICABLE LAW OR AGREED TO IN WRITING WILL ANY COPYRIGHT HOLDER, OR ANY OTHER PARTY WHO MODIFIES AND/OR CONVEYS THE PROGRAM AS PERMITTED ABOVE, BE LIABLE TO YOU FOR DAMAGES, INCLUDING ANY GENERAL, SPECIAL, INCIDENTAL OR CONSEQUENTIAL DAMAGES ARISING OUT OF THE USE OR INABILITY TO USE THE PROGRAM (INCLUDING BUT NOT LIMITED TO LOSS OF DATA OR DATA BEING RENDERED INACCURATE OR LOSSES SUSTAINED BY YOU OR THIRD PARTIES OR A FAILURE OF THE PROGRAM TO OPERATE WITH ANY OTHER PROGRAMS), EVEN IF SUCH HOLDER OR OTHER PARTY HAS BEEN ADVISED OF THE POSSIBILITY OF SUCH DAMAGES.

#### **17. Interpretation of Sections 15 and 16.**

If the disclaimer of warranty and limitation of liability provided above cannot be given local legal effect according to their terms, reviewing courts shall apply local law that most closely approximates an absolute waiver of all civil liability in connection with the Program, unless a warranty or assumption of liability accompanies a copy of the Program in return for a fee.

# LGPL

GNU LESSER GENERAL PUBLIC LICENSE  
Version 3, 29 June 2007  
Copyright (C) 2007 Free Software Foundation, Inc. <<http://fsf.org/>>

Everyone is permitted to copy and distribute verbatim copies of this license document, but changing it is not allowed.

This version of the GNU Lesser General Public License incorporates the terms and conditions of version 3 of the GNU General Public License, supplemented by the additional permissions listed below.

## 0. Additional Definitions.

As used herein, "this License" refers to version 3 of the GNU Lesser General Public License, and the "GNU GPL" refers to version 3 of the GNU General Public License.

"The Library" refers to a covered work governed by this License, other than an Application or a Combined Work as defined below.

An "Application" is any work that makes use of an interface provided by the Library, but which is not otherwise based on the Library. Defining a subclass of a class defined by the Library is deemed a mode of using an interface provided by the Library.

A "Combined Work" is a work produced by combining or linking an Application with the Library. The particular version of the Library with which the Combined Work was made is also called the "Linked Version".

The "Minimal Corresponding Source" for a Combined Work means the Corresponding Source for the Combined Work, excluding any source code for portions of the Combined Work that, considered in isolation, are based on the Application, and not on the Linked Version.

The "Corresponding Application Code" for a Combined Work means the object code and/or source code for the Application, including any data and utility programs needed for reproducing the Combined Work from the Application, but excluding the System Libraries of the Combined Work.

## 1. Exception to Section 3 of the GNU GPL.

You may convey a covered work under sections 3 and 4 of this License without being bound by section 3 of the GNU GPL.

## 2. Conveying Modified Versions.

If you modify a copy of the Library, and, in your modifications, a facility refers to a function or data to be supplied by an Application that uses the facility (other than as an argument passed when the facility is invoked), then you may convey a copy of the modified version:

- a. under this License, provided that you make a good faith effort to ensure that, in the event an Application does not supply the function or data, the facility still operates, and performs whatever part of its purpose remains meaningful, or
- b. under the GNU GPL, with none of the additional permissions of this License applicable to that copy.

## 3. Object Code Incorporating Material from Library Header Files.

The object code form of an Application may incorporate material from a header file that is part of the Library. You may convey such object code under terms of your choice, provided that, if the incorporated material is not limited to numerical parameters, data structure layouts and accessors, or small macros, inline functions and templates (ten or fewer lines in length), you do both of the following:

- a. Give prominent notice with each copy of the object code that the Library is used in it and that the Library and its use are covered by this License.
- b. Accompany the object code with a copy of the GNU GPL and this license document.

## 4. Combined Works.

You may convey a Combined Work under terms of your choice that, taken together, effectively do not restrict modification of the portions of the Library contained in the Combined Work and reverse engineering for debugging such modifications, if you also do each of the following:

- a. Give prominent notice with each copy of the Combined Work that the Library is used in it and that the Library and its use are covered by this License.
- b. Accompany the Combined Work with a copy of the GNU GPL and this license document.
- c. For a Combined Work that displays copyright notices during execution, include the copyright notice for the Library among these notices, as well as a reference directing the user to the copies of the GNU GPL and this license document.
- d. Do one of the following:
  - 1) Convey the Minimal Corresponding Source under the terms of this License, and the Corresponding Application Code in a form suitable for, and under terms that permit, the user to recombine or relink the Application with a modified version of the Linked Version to produce a modified Combined Work, in the manner specified by section 6 of the GNU GPL for conveying Corresponding Source.
  - 2) Use a suitable shared library mechanism for linking with the Library. A suitable mechanism is one that (a) uses at run time a copy of the Library already present on the user's computer system, and (b) will operate properly with a modified version of the Library that is interface-compatible with the Linked Version.
- e. Provide Installation Information, but only if you would otherwise be required to provide such information under section 6 of the GNU GPL, and only to the extent that such information is necessary to install and execute a modified version of the Combined Work produced by recombining or relinking the Application with a modified version of the Linked Version. (If you use option 4d0, the Installation Information must accompany the Minimal Corresponding Source and Corresponding Application Code. If you use option 4d1, you must provide the Installation Information in the manner specified by section 6 of the GNU GPL for conveying Corresponding Source.)

## 5. Combined Libraries.

You may place library facilities that are a work based on the Library side by side in a single library together with other library facilities that are not Applications and are not covered by this License, and convey such a combined library under terms of your choice, if you do both of the following:

- a. Accompany the combined library with a copy of the same work based on the Library, uncombined with any other library facilities, conveyed under the terms of this License.
- b. Give prominent notice with the combined library that part of it is a work based on the Library, and explaining where to find the accompanying uncombined form of the same work.

#### 6. Revised Versions of the GNU Lesser General Public License.

The Free Software Foundation may publish revised and/or new versions of the GNU Lesser General Public License from time to time. Such new versions will be similar in spirit to the present version, but may differ in detail to address new problems or concerns.

Each version is given a distinguishing version number. If the Library as you received it specifies that a certain numbered version of the GNU Lesser General Public License "or any later version" applies to it, you have the option of following the terms and conditions either of that published version or of any later version published by the Free Software Foundation. If the Library as you received it does not specify a version number of the GNU Lesser General Public License, you may choose any version of the GNU Lesser General Public License ever published by the Free Software Foundation.

If the Library as you received it specifies that a proxy can decide whether future versions of the GNU Lesser General Public License shall apply, that proxy's public statement of acceptance of any version is permanent authorization for you to choose that version for the Library.

## MIT

Copyright 1987, 1988 by MIT Student Information Processing Board.

Permission to use, copy, modify, and distribute this software and its documentation for any purpose is hereby granted, provided that the names of M.I.T. and the M.I.T. S.I.P.B. not be used in advertising or publicity pertaining to distribution of the software without specific, written prior permission. M.I.T. and the M.I.T. S.I.P.B. make no representations about the suitability of this software for any purpose. It is provided "as is" without express or implied warranty.

## zlib

Copyright (C) 1995-1998 Jean-loup Gailly and Mark Adler

This software is provided 'as-is', without any express or implied warranty. In no event will the authors be held liable for any damages arising from the use of this software.

Permission is granted to anyone to use this software for any purpose, including commercial applications, and to alter it and redistribute it freely, subject to the following restrictions:

1. The origin of this software must not be misrepresented; you must not claim that you wrote the original software. If you use this software in a product, an acknowledgment in the product documentation would be appreciated but is not required.
2. Altered source versions must be plainly marked as such, and must not be misrepresented as being the original software.
3. This notice may not be removed or altered from any source distribution. Jean-loup Gailly Mark Adler [jloup@gzip.org](mailto:jloup@gzip.org) [madler@alumni.caltech.edu](mailto:madler@alumni.caltech.edu)

The data format used by the zlib library is described by RFCs (Request for Comments) 1950 to 1952 in the files <ftp://ds.internic.net/rfc/rfc1950.txt> (zlib format), [rfc1951.txt](ftp://ds.internic.net/rfc/rfc1951.txt) (deflate format) and [rfc1952.txt](ftp://ds.internic.net/rfc/rfc1952.txt) (gzip format).



# Glossary

The following terms are used throughout this guide:

**BMCA** — Best Master Clock Algorithm

**DashBoard** — DashBoard Control System

**Device** — A physical, virtual, or software application that may include multiple sources, destinations, senders, or receivers.

**Essence** — A single elementary logical media signal. For example, a video essence is one video channel. An audio essence is a single audio (mono) channel.

**Flow** — The continuous raw media content. It can contain more than one essence (e.g. an audio flow can contain multiple channels, and an SDI flow may contain audio and video essences).

**HTTP** — Hypertext Transfer Protocol

**Module** — Refers to the IGGY-MADI.

**Receiver** — An element within a device which that receives exactly one stream, which contains one flow from a network

**Sender** — An element within a device which presents exactly one flow, packaged as a stream onto a network

**SFP** — Small Form-factor Pluggable module

**Stream** — One flow, encapsulated within a transport protocol

**System**— The mix of interconnected production and terminal equipment in your environment

**TCP** — Transmission Control Protocol

**TTL** — Time To Live

**UDP** — User Datagram Protocol

