

Product Release Notes

Streamline



PRODUCT RELEASE NOTES

Welcome to the Streamline v6.8.2 Release Notes. Please read this document to find important information on areas of Streamline that may not be covered in the Getting Started Guide or the User Help system.

CONTENTS

VERSION HISTORY	3
VERSION 6.8.2 – MAY 2025.....	3
VERSION 6.8.1 – APRIL 2025.....	3
VERSION 6.8.0 – APRIL 2025.....	3
VERSION 6.7.0 – NOVEMBER 2024.....	6
VERSION 6.6.0 – JULY 2024.....	7
VERSION 6.5.0 – APRIL 2024.....	10
VERSION 6.4.1 – FEBRUARY 2024.....	11
VERSION 6.4.0 – JANUARY 2024.....	11
VERSION 6.3.1 – JANUARY 2024.....	12
VERSION 6.3.0 – OCTOBER 2023.....	12
VERSION 6.2.1 – MAY 2023.....	14
VERSION 6.2.0 – MARCH 2022.....	15
VERSION 6.1.1 – JUNE 2022.....	18
VERSION 6.1.0 – MARCH 2022.....	19
VERSION 6.0.0 – JULY 2021.....	21
VERSION 5.1.1 – APRIL 2021.....	23
VERSION 5.1.0 – FEBRUARY 2021.....	24
VERSION 5.0.0 – AUGUST 2020.....	26
VERSION 4.5.3 – DECEMBER 2020.....	28
VERSION 4.5.2 – NOVEMBER 2020.....	28
VERSION 4.5.1 – AUGUST 2020.....	28
VERSION 4.5.0 – MAY 2020.....	29
VERSION 4.4.0 – MARCH 2020.....	30
VERSION 4.3.2 – JANUARY 2020.....	31
VERSION 4.3.1 – JANUARY 2020.....	32
VERSION 4.3.0 – MAY 2019.....	34
VERSION 4.2.1 – APRIL 2019.....	35
VERSION 4.2.0 – APRIL 2019.....	35
VERSION 4.1.0 – DECEMBER 2018.....	37
VERSION 4.0.4 – OCTOBER 2018.....	40
VERSION 4.0.3 – OCTOBER 2018.....	40

VERSION 4.0.2 – OCTOBER 2018 40
VERSION 4.0.1 – SEPTEMBER 2018..... 40
VERSION 4.0.0 – AUGUST 2018 41
KNOWN ISSUES 45
GETTING HELP 47

VERSION HISTORY

VERSION 6.8.2 – MAY 2025

BUGS ADDRESSED

- Fixed an issue where upgrading a Streamline system failed when migrating a work order with a null status. (STR-5636)



VERSION 6.8.1 – APRIL 2025

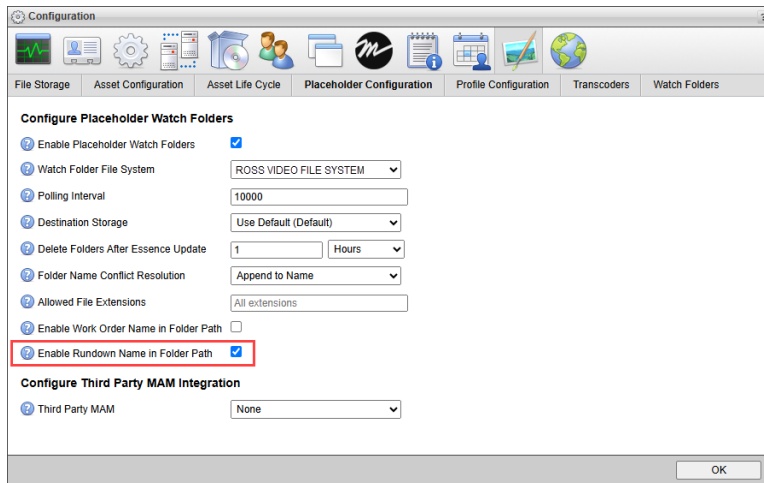
BUGS ADDRESSED

- Fixed a bug where the upload button in the asset browser would be available to users without permissions during page load. (STR-5412)
- Fixed a bug where the upload button in the asset browser was not displayed for users with directory permissions. (STR-5620)
- Fixed an issue where the work order notification setting did not persist. (STR-5622)
- Fixed an issue where the save button in work order asset request stayed grey after saving using the toolbar button. (STR-5623)
- Fixed an issue where duplicates could be created in work order asset request if the top toolbar save was triggered multiple times. (STR-5624)

VERSION 6.8.0 – APRIL 2025

WHAT'S NEW

- **PLACEHOLDER WORKFLOW IMPROVEMENTS**
Improved support for organizing placeholders by rundown. Administrators now have an option to sort placeholder watch folders by rundown name. You can configure this option under  **Configuration** >  **Asset** > **Placeholder Configuration**.




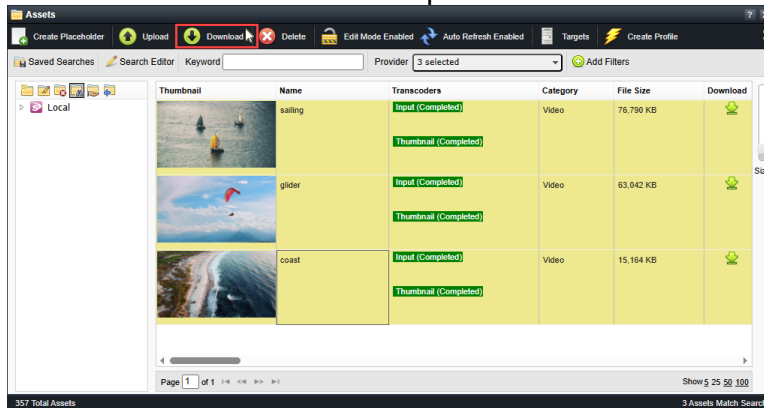
CONFIGURATION DIALOG — 'Enable Rundown Name in Folder Path' checkbox.

UPGRADE NOTE:

When upgrading to Streamline v6.8.0, this option is deselected by default.

- BULK DOWNLOADS**

Users can now download multiple assets. You can select several assets and click  **Download** to download all the individual files, not as a zipped file. The downloaded file name will be the asset name. Pop-up blockers will need to be disabled on first attempt.




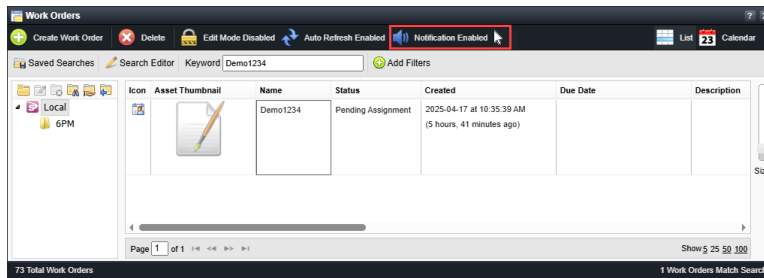
ASSETS PANE — Displays a user downloading multiple assets.

- RESPONSIVE LABEL LAYOUT**

When resizing the **Asset Details** view, forms and fields will now dynamically adjust to prevent data from being hidden.

- WORK ORDER MANAGER ALERTS**

You can now opt-in to receive sound notifications when a work order is modified by another user. In the Work Order Manager panel, click the  **Notifications enabled** button to subscribe to alerts. This only applies to work orders in the View.



BUGS ADDRESSED

- Fixed an issue where users were unable to scrub video in the Preview Media Player. (STR-5586)
- Fixed an issue where SAML SSO would not work with metadata URLs using a byte order mark (BOM), such as Microsoft Entra ID. (STR-5601)
- Fixed an issue where special characters in the Work Order Name affected asset previews in the work order manager. (STR-5612)
- Fixed an issue where assets were sometimes duplicated when added to work orders. (STR-5613)
- Fixed an issue where the expand/collapse functionality in the Virtual Directory tree did not operate as expected. (STR-5614)

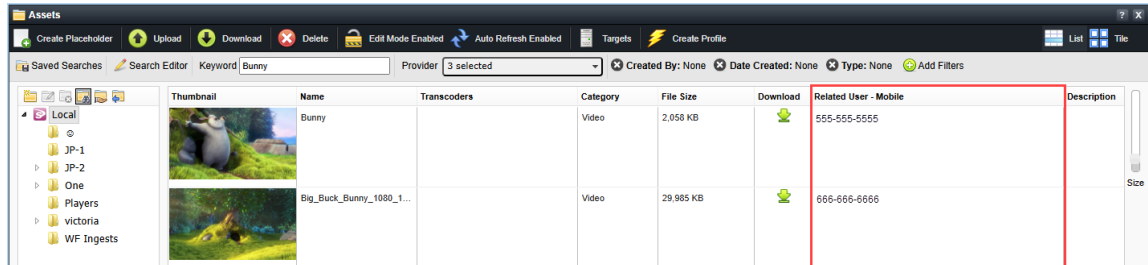
CERTIFICATIONS

- **OPERATING SYSTEMS**
 - Windows Server 2019 (Server)
 - Windows Server 2022 (Server)
 - Windows 10 (Client)
- **BROWSERS**
 - For Windows – Chrome 100.0+ (Client)
 - For macOS – Chrome 100.0+ and Safari 15.0+ (Client)
- **SUPPORTED ROSS PRODUCT VERSIONS**
 - Inception v17.3.0
 - OverDrive v23.0

VERSION 6.7.0 – NOVEMBER 2024

WHAT'S NEW

- **CUSTOM ATTRIBUTES FOR RELATED USER METADATA**
Admins can now add a new custom attribute type to display read-only user related metadata.



ASSET EDITOR PANEL – Displays a 'Related User – Mobile' Column.

BUGS ADDRESSED

- Fixed a Work Order deserialization issue that occurred when the Status column used TINYBLOB as the data type. (STR-5495)


CERTIFICATIONS


- **OPERATING SYSTEMS**
Windows Server 2019 (Server)
Windows Server 2022 (Server)
Windows 10 (Client)
- **BROWSERS**
For Windows – Chrome 96.0 (Client)
For macOS – Chrome 96.0 and Safari 15.0 (Client)
- **SUPPORTED ROSS PRODUCT VERSIONS**
Inception v17.2.2
OverDrive v23.0

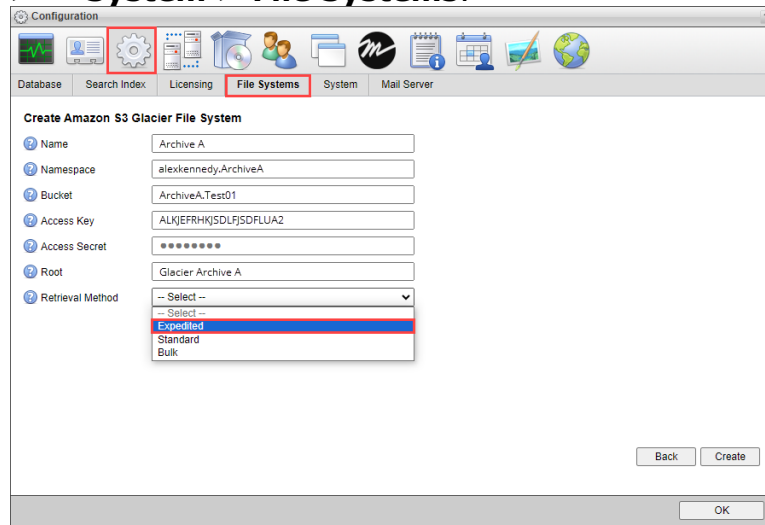
VERSION 6.6.0 – JULY 2024

WHAT'S NEW

- **S3 AMAZON GLACIER RETRIEVAL**

You can now use additional Standard or Expedited retrieval options for Amazon S3 Glacier. You can configure these options under  **Configuration**

>  **System > File Systems.**



The screenshot shows a configuration window titled 'Configuration' with a 'File Systems' tab selected. The main area is titled 'Create Amazon S3 Glacier File System'. It contains several input fields: Name (Archive A), Namespace (alexkennedy:ArchiveA), Bucket (ArchiveA.Test01), Access Key (ALKJEFRHKJSDLFJSDFLUA2), Access Secret (masked with dots), Root (Glacier Archive A), and Retrieval Method (a dropdown menu with 'Expedited' selected). At the bottom, there are 'Back', 'Create', and 'OK' buttons.

CONFIGURATION DIALOG — Displays the creation of a new Amazon S3 Glacier File System with the Retrieval Method set to Expedited.

UPGRADE CONSIDERATIONS FOR AMAZON S3 GLACIER FILE SYSTEMS

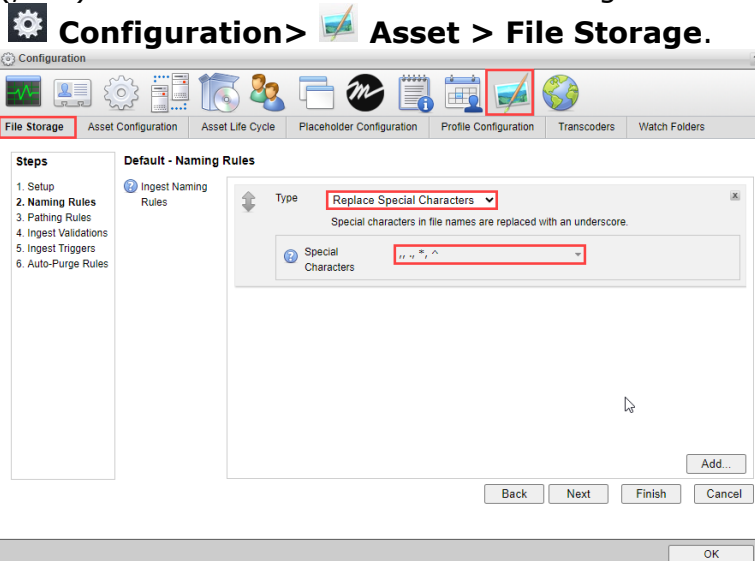
On upgrade, any existing Amazon S3 Glacier file systems will default to the Expedited retrieval method.

If using a retrieval method that requires extra time (Standard or Bulk), then Ross Commissioners have the option to add the following VM argument to specify the interval time to check Glacier retrievals. The default is 900000ms (15minutes).
`rwp.cloud.aws.glacier.restore_result_request_interval_extended`

VM arguments that set the expiration days of restored objects may also need to be adjusted if you are using extended retrieval methods. The default is 1 day, which indicates how long the object is available before another retrieval must be performed to access it again.




`rwp.cloud.aws.glacier.restored_object_expiration_days`

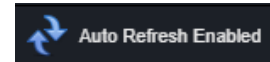
- NEW 'REPLACE SPECIAL CHARACTER' NAMING RULE**
 This naming rule will replace any special characters from the selected list (.,*^) with an underscore. You can configure this option under




CONFIGURATION DIALOG — Displays the Naming Rules with the Type set to **Replace Special Characters** for all available special characters.

- ENHANCEMENTS TO AUTO REFRESH BEHAVIOR**

The  **Auto Refresh** button in the Asset Panel has the following new enhancements: the  **List** or  **Tile** view refreshes automatically with each update, and after an asset is uploaded it automatically scrolls up to display it.



Displays the 'Auto Refresh Enabled' button.

When the  **Auto Refresh** button is disabled the grid will not be updated, even when updates — like renaming assets or descriptions — are made.

- SAML SINGLE SIGN-ON**

Single Sign-On and Single Logout can now be configured with SAML identity providers such as Microsoft Azure AD and Okta, enabling users to automatically log into Streamline.

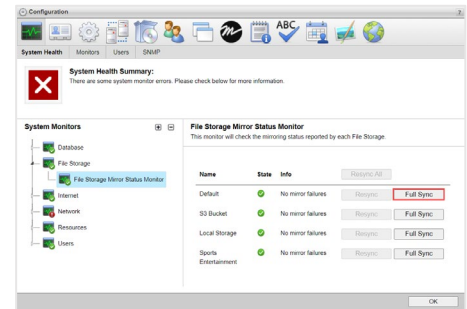
BUGS ADDRESSED

- Fixed an issue where the clip filename syntax caused an issue with OverDrive systems. (STR-5259)
- Fixed an issue where users were able to upload to the local directory without the appropriate permissions. (STR-5412)
- Fixed an issue where the system modified work orders using automated status changes. (STR-5423)
- Fixed an issue where the Work Order Configuration autosaved old data when it was navigated too quickly. (STR-5429)

VERSION 6.5.0 – APRIL 2024

WHAT'S NEW

- **FULL SYNC FOR FILE STORAGE MIRRORS**
Administrators can now run a Full Sync to perform a full synchronization between the file storage(s) and the file storage configured to mirror ingested content. Navigate to **Configuration > System Monitor > System Health** to view the 'Full Sync' button. (STR-5379)



The System Monitor > System Health tab

BUGS ADDRESSED

- Fixed an issue where accent marks were replaced with a question mark character. (STR-5233)
- Fixed an issue where the **Edit Assets** permission was required to add attachment to work order. (STR-5355)

VERSION 6.4.1 – FEBRUARY 2024

BUGS ADDRESSED

- Fixed an issue where the OpenMAM filter was sometimes ignored when opened from XPression plugin. (STR-5346)

VERSION 6.4.0 – JANUARY 2024

WHAT'S NEW

- **SUPPORT FOR MARIADB**
This release provides support for MariaDB v10.11.5.
- **SECURITY ENHANCEMENTS**
 - **OAUTH AUTHENTICATION FOR EMAIL SERVER INTEGRATIONS**
Streamline now provides support for OAuth authentication for email server integrations. This includes support for the TLS 1.2 protocol. (STR-5236 | STR-5321)
 - **UPDATES TO API & JDK (STR-5231)**
 - **IMPROVEMENTS TO UPGRADE SCRIPTS (STR-5309)**

VERSION 6.3.1 – JANUARY 2024

BUGS ADDRESSED

- Fixed an issue where large logs were building when Streamline sent blank MOS messages. (STR-5316)
- Fixed an issue where filtering with attributes set to blank cleared additional results outside the search query. (STR-5317)

NOTE:

See the **Upgrade Considerations** for details on how to resolve search issues for any of the following filters: Asset Source, Category, Content Region, Show, Station or Type.

- Fixed an issue where news stories with more than 5000 characters did not allow placeholder creation. (STR-5323)

UPGRADE CONSIDERATIONS

UPGRADE NOTE (RELATED TO STR-5317)

If a customer is filtering assets with the attributes set to blank, it is recommended that Ross Commissioners add the following VM argument (with the value set to 'true'):
`rwp.metadata.custom_indexing.use_default_unanalyzed_name=true`

VERSION 6.3.0 – OCTOBER 2023

WHAT'S NEW

- **SUPPORT FOR AZUL ZULU JDK**
Streamline now provides support for Azul Zulu OpenJDK.

BUGS ADDRESSED

- Fixed a MOS target issue where a key name with more than one underscore may not transfer to the correct file storage location. (STR-5242)
- Fixed an issue where users uploading an attachment to a work order may encounter a permission issue. (STR-5268)
- Removed deprecated 'Streamline Visual Workflow' license. (STR-5275)
- Fixed an issue where a user's search filter criteria may temporarily reset when the user switches to a different perspective view. (STR-5283)
- Fixed an issue where the Perspectives icon may be hidden from the menu in the Streamline MOS plugin view. (STR-5306)

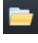
UPGRADE CONSIDERATIONS

UPGRADE NOTE (FOR STREAMLINE MOS PLUGIN ONLY)

If a customer is using perspective views in the Streamline MOS plugin, it is recommended that Ross Technical Support includes an optional database script to maintain the original plugin perspective.

VERSION 6.2.1 – MAY 2023


BUGS ADDRESSED

- Fixed an Internet Explorer browser issue where the Streamline **Assets** panel, located under **Assets** >  **Browse**, did not display the search results. (STR-5257)
- Fixed an issue where unfulfilled placeholders did not include the name field in the MOS payload. (STR-5258)

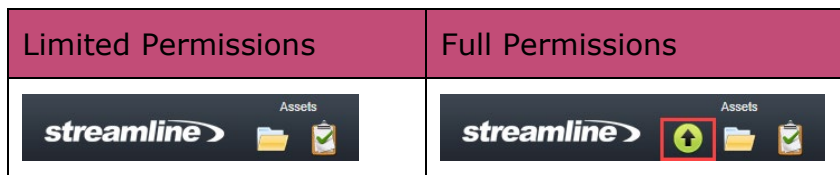
VERSION 6.2.0 – MARCH 2022


WHAT'S NEW

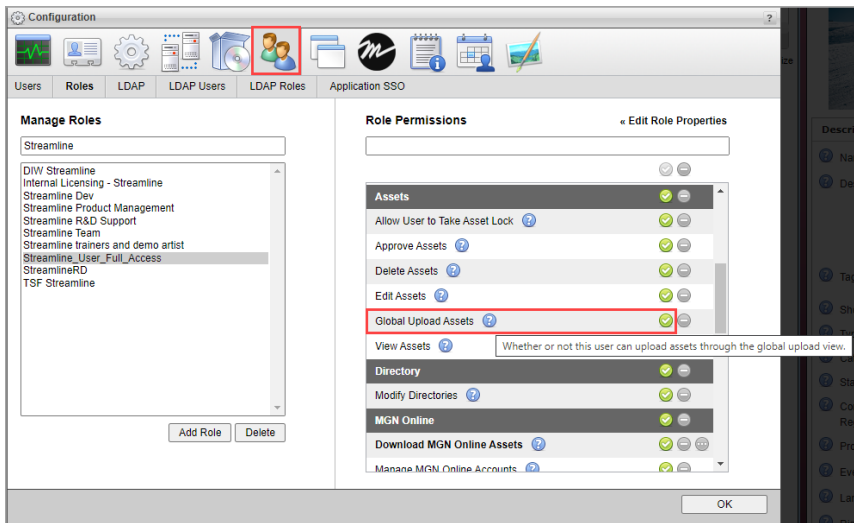
• **ROLE PERMISSION TO UPLOAD ASSETS GLOBALLY**

The  **Upload** button on the Main Toolbar now allows users to uploads assets globally. This includes mapping profile virtual directories and bypassing individual directories.

★ For the button to appear, an administrator must assign a role with the **Global Upload Asset** permissions to the user, as shown below:



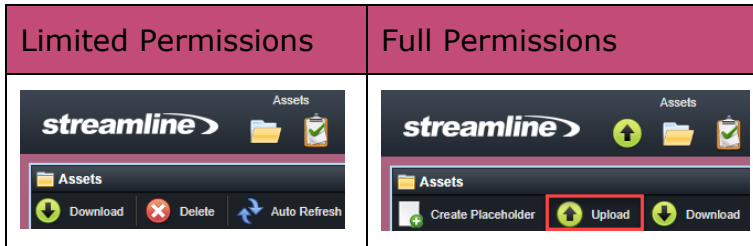
To edit role permissions, administrators can navigate to  **Configuration** > **Users** > **Roles**.





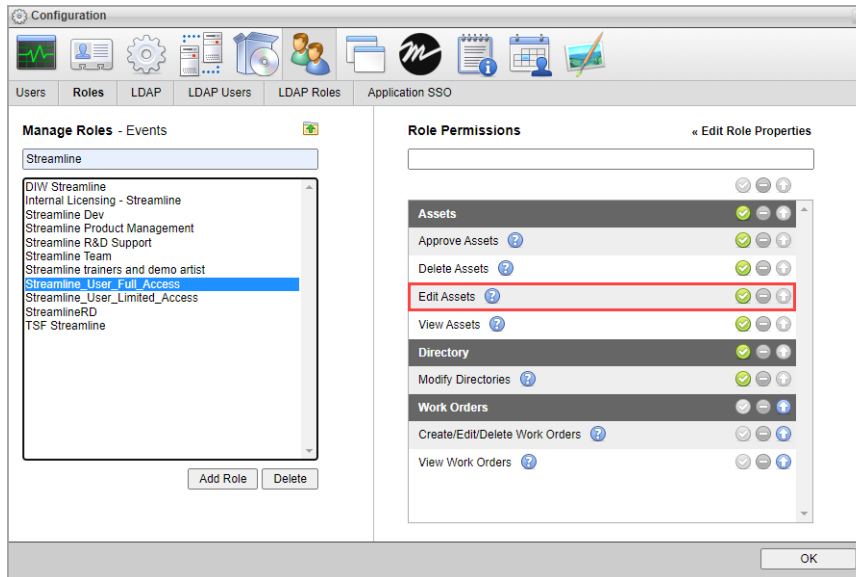
CONFIGURATION DIALOG – Displays the **Global Upload Assets** role permission. (STR-5245)

- ROLE PERMISSION TO UPLOAD ASSETS TO INDIVIDUAL DIRECTORIES**

The  **Upload** button on the **Assets** menu allows users with permissions to upload assets to specific folder directories.



To edit role permissions for specific folder directories, administrators must open the **Assets** dialog from the  **Browse** button, and select a folder in the Directory Tree View. Click the  **Modify Permissions** button to open the **Configuration** dialog and then edit which roles have permission to **Edit Assets**.



CONFIGURATION DIALOG – Displays the **Edit Assets** role permission. (STR-5250)

- **ABILITY TO SET LIMITS FOR WATCH FOLDER TASKS**

Watch Folders can now set a configurable limit for the number ingest tasks that can run simultaneously. The required concurrency limit determines how many active ingest tasks can be submitted and improves system performance & processing speeds.

To set a limit for the number of ingest tasks a Watch Folder can run, set the VM argument below to your preferred value:

streamline.watchfolderpoll.max_concurrent_per_folder=*n*

- Where *n* is set to **0** to provide unlimited concurrency.
- Where *n* is set to a value greater than zero to limit the number of ingest tasks that can run simultaneously.

NOTE:

If a poll iteration is over the concurrency limit, the watch folder will not be checked again until the next poll.
(STR-5247)

UPGRADE CONSIDERATIONS

- **FOR ROLE PERMISSIONS**

Previously it was not clear that there were different upload permissions for users to upload assets from the Main Toolbar globally or at the directory level from the **Assets** dialog. The **Global Upload Assets** permission replaces the **Upload Assets** permission. Administrators can still provide a role permission to **Edit Assets** for a specific directory, or provide a role full permissions to globally update assets (**Global Upload Assets**).

VERSION 6.1.1 – JUNE 2022

WHAT'S NEW

- **MOS – PLUGIN IDS**

Can add plugin ID tags to asset ncsItem messages via drag and drop, when enabled by VM arguments.

BUGS ADDRESSED

- Duration tag included in MOS object when dragged from plugin. [STR-2651]
- Assets in stories that have been deleted or floated in a monitored rundown can be deleted. [STR-3739]
- 'Any of' filter in Reports Manager works as expected. [STR-4550]
- Exiftool schema URI parser uses a regular expression. [STR-5190]
- Can categorize pre-6.1 assets into format profiles. [STR-5200]
- Default format profile categorization tasks restart when interrupted. [STR-5205]
- XMP metadata overwrites existing asset attributes on ingest. [STR-5216]

UPGRADE CONSIDERATIONS

- On ingest, pre-populated asset attributes will be overwritten by mapped file metadata. However, when performing essence swaps or updating mapping profiles through Visual Workflow, populated attributes will not be overwritten.

VERSION 6.1.0 – MARCH 2022

WHAT'S NEW

- **FORMAT CONFIGURATION – PROFILES**
File format profiles can be configured such that the technical profile of an asset can be identified by a common name. Files can be automatically categorized into preconfigured format types on ingest. File essence can be chosen among existing format profiles. Format configuration is supported by Visual Workflow.
- **PROPERTY SETS - XMP METADATA**
File custom XMP metadata tags are now read from and written to in terms of their information type (group 0) and namespace (group 1) tag groups, rather than just their information type.
- **CAN UPDATE ASSET MAPPING PROFILES POST-INGEST**
Can re-assign the mapping profile of an asset post-ingest. Mapping profile updates are supported by Visual Workflow.
- **ADD LOG ROLLOVER CLEAN UP FOR GATEWAY MESSAGE**
Cloud Gateway log files employ the same clean-up mechanism as MOS logs. The previous logs are zipped and older ones are deleted.

BUGS ADDRESSED

- File storage health check record cleared on resync. [STR-4849]
- Enforce lower bound on send profile to location node. [STR-4877]
- File system dropdown not visible under 'watch folder transcoder configuration' on IE. [STR-4885]
- Fix MySQL database upgrade error from v5.1.1 to v6.0. [STR-4898]
- Move asset node takes input from text node. [STR-4925]
- Fix unresponsive behaviour from search editor after editing. [STR-4986]
- AP channel feed loads. [STR-5061]
- Can view asset information from AP feed source in asset details view. [STR-5085]
- Can load system AP Media mapping profile view. [STR-5086]
- Validate concurrency socket limit for Visual Workflow nodes. [STR-5120]
- StreamForXpression API endpoint returns XPVC format when generated by the Ross Transcoder Engine. [STR-5142]

UPGRADE CONSIDERATIONS

- On upgrade, Streamline will configure two default format profiles: proxy and thumbnail. Any preconfigured proxy and thumbnail transcoders will be assigned to these profiles.
- Transcoded formats will be referred to by their format profile name.
- Due to the aforementioned change to how XMP metadata tags are supported, any mapping profile containing custom XMP tags will be broken on update. To remedy this, create a new property set and create a new mapping profile. Then, use the update mapping profile node to apply the new mapping profile to your existing assets.

VERSION 6.0.0 – JULY 2021

WHAT'S NEW

- **STREAMLINE VISUAL WORKFLOWS**
An interactive workflow engine for automating routine system maintenance like file cleanup and archiving media to long term storage.
- **"MASTER" LOCATION WILL BE REFERRED TO AS "PRIMARY" LOCATION**
Henceforth, the "master" location of an asset format will be referred to as the "primary" location.
- **ASSET DATABASE SEARCH**
While the search index is rebuilding, asset search will return results directly from the database.

BUGS ADDRESSED

- When index search is not configured, asset browser will return as many rows as expected. [STR-2272]
- Content changes entered into asset details view immediately after save remain in view. [STR-2383]
- Ctrl+C works in asset browser tile view. [STR-2626]
- Sync LDAP users when role sync is disabled. [STR-3196]
- Improved the efficiency of the asset approval workbench icon rendering [STR-3206]
- Can download from an external feed to an unfulfilled placeholder that was created in a monitored running order. [STR-3338]
- Can apply a property set to a file without existing XMP metadata. [STR-3388]
- Shift-Select works in asset tile view. [STR-3396]
- Produce correct error message when creating Abekas file system without API port number. [STR-3956]
- Improve performance of file storage mirroring. [STR-4192]
- Date-related searches use user timezone. [STR-4236]
- AP Media search returns the expected number of rows. [STR-4378]
- Asset ingest doesn't create metadata file when target storage is set to indexed. [STR-4381]
- Downloads from external feeds does not cause an overflow in the modal. [STR-4384]
- Can download from MGN in extension types other than JPG. [STR-4392]

- Created By field in work order form populates. [STR-4399]
- Timezones work in reports manager. [STR-4523]
- Fixed typo in file storage licensing tab. [STR-4589]
- Lock can be taken after fulfilling placeholder in Fire Fox. [STR-4645]
- Allow a value of 0 in the "Delete Folders after essence" field in placeholder watchfolder configuration. [STR-4722]
- File storage dropdown has a default value in Internet Explorer. [STR-4731]
- Deleted asset view is closed for logged out users. [STR-4740]
- Deleted work order view is closed for logged out users. [STR-4744]
- Save button is greyed out when a work order is opened. [STR-4756]

UPGRADE CONSIDERATIONS

- In order to use the new Streamline Visual Workflows product, ensure that your Streamline product key includes a license for Visual Workflows.
- The Visual Workflow editor is not completely supported in Internet Explorer. It is recommended that another browser be used with this feature.

VERSION 5.1.1 – APRIL 2021

BUGS ADDRESSED

- Relative days filter was modified, so “today” is always included when retrieving results. If the filter number is positive, the data range starts on the beginning of today. If negative, the range starts at the end of today. [STR-4469]
- The toggle-state for "Include Subdirectories" will be preserved between sessions. [STR-4446]
- Reports using dates or times now will use the user configured timezone instead of using the timezone of the server. Results will be displayed showing the time and timezone of the user who ran the report. Older report runs without a timezone will display the system configured value. [STR-4236]
- Cannot delete file system that is associated with the asset life cycle. [STR-4560]
- No more error when a file that has essences in multiple file storages is transcoded. [STR-4566]

UPGRADE CONSIDERATIONS

- The relative day filters will not include today in the date range. Existing filters will need to be updated if today is not wanted in the filter.
- Dates and times of existing reports will need to be adjusted to match the configured timezone instead of the timezone of the server.

VERSION 5.1.0 – FEBRUARY 2021

WHAT'S NEW

- **SUPPORT FOR AP MEDIA CONTENT API**
Set up a feed of continuous news content using AP's new AP Media API; use AP Media to create new assets from search results or to resolve placeholders. As of 5.1, support for AP Graphicsbank has been deprecated.
- **IMPROVE PERFORMANCE OF ASSET METADATA UPDATES**
Debounce updates to asset metadata folders; delay is set to five minutes by default and can be configured as a VM argument.
- **IMPROVE SPEED OF LOCAL FILE COPIES**
Mirroring from one file storage to another takes considerably less time.
- **IMPROVE MOS STATUS UPDATE PERFORMANCE**
Can monitor large shows with lots of placeholders without intermittent slowdown.

BUGS ADDRESSED

- Text in targets column of asset browser does not overlap. [STR-1333]
- Download button for placeholders is disabled. [STR-2264]
- Plugin opens MOS object on first load. [STR-2650]
- Resolve intermittent MOS update slowdown. [STR-3212]
- Temporary files are deleted on error. [STR-4191]
- Improve performance of file storage mirroring. [STR-4192]
- User access permissions check the correct criteria. [STR-4193]
- Peer nodes in multi-node systems stay connected to each other. [STR-4225]
- Assets and Work Orders filtered according to user time zone. [STR-4236]
- EVO sends "Ready" ticket after transfer. [STR-4262]
- User can navigate away from opened MOS page without refreshing. [STR-4343]
- EVO metadata file displays correct status when asset transfer fails. [STR-4373]
- Download request button works for admin. [STR-4395]
- MGN download dropdown does not overflow. [STR-4397]
- MGN images are always downloaded in specified format. [STR-4396]
- AJAX user dropdowns for work orders and assets populate. [STR-4421]

UPGRADE CONSIDERATIONS

- As of 5.1, AP Media has been supplanted AP Graphicsbank for all of its use cases. All existing behavior has been replicated with AP Media, however a new license key must be acquired for use with AP Media.

VERSION 5.0.0 – AUGUST 2020

WHAT'S NEW

- **AMAZON S3 GLACIER FILE SYSTEM**
Archive and restore Asset files using Amazon S3 Glacier.
- **ADOBE PREMIERE PRO CC INTEGRATION WITH EVO SHAREBROWSER**
Integrate Streamline and EVO ShareBrowser to track, fulfill and view the status of placeholders from Adobe Premiere Pro CC.
- **OPTION TO INCLUDE WORK ORDER NAME IN PLACEHOLDER WATCH FOLDER PATH**
Choose whether to include the Work Order name as part of the placeholder watch folder path.
- **QUALIFIED WINDOWS SERVER 2019**
Official support for Windows Server 2019.

BUGS ADDRESSED

- Download of asset no longer updates the Date Modified. [STR-3577]
- Asset Browser consistently updates when new assets are uploaded or deleted. [STR-2213]
- Work Orders show correctly when today is selected in calendar view. [STR-4143]
- Deleting a placeholder in a Work Order from the Asset Browser will update the Work Order. [STR-3879]
- Deleting a File Storage with Assets in rundowns no longer causes Asset Browser rendering to fail. [STR-3194]
- Task Viewer no longer requires the "View Asset" permission. [STR-2633]
- Opening an Asset from the NRCS that has been deleted now fails gracefully. [STR-2750]
- Tasks no longer sit in the submitted state. [STR-3223]
- Thumbnails without created dates no longer cause NullPointerException errors. [STR-3619]
- Editing search in a feed will return new results. [STR-3228]
- Users without "Edit Asset" permission can no longer create placeholders. [STR-2606]
- Destination File Storage can now be set to "Use Default" option. [STR-3195]
- Failing file transfers no longer marked by failures to clean-up temp folders. [STR-3737]

- Create button no longer available for File Storages with unlicensed File Systems. [STR-2071]
- Logging in no longer generates multiple "Synchronizing" messages in the Asset Browser. [STR-2269]
- Items in Transaction Manager can be opened using hotkey Ctrl+Enter. [STR-2233]
- Selecting on iPad works consistently. [STR-1785]
- Folders can be resized on iPad. [STR-1784]
- Work Orders can be dragged between folders on iPad. [STR-1783]
- Assets can be dragged between folders on iPad. [STR-1782]
- Save hotkey no longer works when Asset Details saving is disabled. [STR-2338]
- Streamline Redundant System Configuration Guide has the correct value of "16M" instead of "16MB" for "max_allowed_packet". [STR-2639]
- "Port" in Abekas File System configuration has been changed to "API Port" for clarity. [STR-2219]
- Temp folders no longer build up when uploading. [STR-4123]
- Targets column now scales properly with many targets. [STR-1333]
- Temporary TGA files no longer build up when ingesting. [STR-4123]

UPGRADE CONSIDERATIONS

- The `streamline.mos.asset_metadata_folder.path` VM argument is no longer supported, and requires manual intervention to reconfigure. The value of the VM argument, should now be configured as a File System in Streamline and used with the "Generic" Third-Party MAM configuration.

VERSION 4.5.3 – DECEMBER 2020

BUGS ADDRESSED

- Fixed database issue when upgrading from v3.3 or earlier [STR-4355]
- Perspective no longer fails to load upon initialization of workbench [RWP-1225]

VERSION 4.5.2 – NOVEMBER 2020

BUGS ADDRESSED

- Reduced the time required to transfer a file from storage to mirror [STR-4192]
- User access permissions check no longer uses the wrong directory [STR-4193]
- Searching now uses the user's timezone, not the system timezone [STR-4236]
- Double clicking a MOS object in an NRCS now opens the object inside the plugin, not only the plugin [STR-2650]
- Files which error on upload are now also removed from the temp folder [STR-4191]
- Improved the efficiency of the asset approval workbench icon rendering [STR-3206]

VERSION 4.5.1 – AUGUST 2020

BUGS ADDRESSED

- Temp folders no longer build up when uploading. [STR-4123]
- Work Orders show correctly when today is selected in calendar view. [STR-4143]
- Download of asset no longer updates the Date Modified. [STR-3577]
- Thumbnails without created dates no longer cause NullPointerException errors. [STR-3619]
- MGN client now authenticates. [STR-4126]

VERSION 4.5.0 – MAY 2020

WHAT'S NEW

- **UPLOAD DIRECT TO VIRTUAL DIRECTORY**
Assets can now be uploaded in the Asset Browser directly to the selected virtual directory.
- **UNIQUE ID FILE NAME SUFFIX NAMING RULE**
Prevent collisions in file names on storages using the "Add Unique Suffix" naming rule.
- **ASSET LOCATION STRATEGY FOR WORK ORDER PLACEHOLDERS**
Specify what virtual directory will be used for Assets created in Work Orders.
- **IMPROVED SUPPORT FOR AVID INEWS**
When iNEWS is selected as the NRCS, messages to the NRCS plugin will automatically have the <ncsItem> and <item> wrappers removed. This is required for iNEWS to recognize the message.
- **CHROME V80 SECURITY CHANGE SUPPORT**
Cookies sent from Streamline will include attributes "SameSite=None;Secure" to support setting cookies cross-site. This will only work for Streamline servers running with SSL. See this changelog from Chrome for details: <https://www.chromium.org/updates/same-site>

BUGS ADDRESSED

- Asset Details no longer opens without acquiring the lock. [STR-2530]
- Errors no longer occur when the "Status" field is present in the Work Order creation dialog. [STR-3670]
- Blank NCS ID no longer prompts for a save when navigating from MOS uplink. [STR-3192]
- Label for "Transcode on Ingest" has been changed to "Create format on ingest" for clarity. [STR-3620]
- Having a transcoder selected to generate both a thumbnail/proxy and format will no longer trigger a double transcode. [STR-3621]
- Asset upload dialog can now be closed on the tablet. [STR-3627]
- Deletes to Abekas File Systems no longer fail with an XML error. [STR-3657]
- Generating smoke test for MediaInfo now uses the installed JRE from Streamline. [STR-3726]

UPGRADE CONSIDERATIONS

- Default batch size for attribute initialization task has been reduced from 50 records to 10. [STR-3671]

VERSION 4.4.0 – MARCH 2020

WHAT'S NEW

- **OFFICIAL SUPPORT FOR OCTOPUS NCS**
Octopus has been qualified as an officially supported newsroom. Compatibility requires additional configuration outlined in [KNOWN ISSUES](#).
- **OFFICIAL SUPPORT FOR INEWS NCS**
iNEWS has been qualified as an officially supported newsroom. Compatibility requires additional configuration outlined in [KNOWN ISSUES](#).
- **ROSS TRANSCODE ENGINE SUPPORT**
Streamline officially supports the Ross Transcode Engine. This has replaced Vantage as the solution for transcoding proxies and thumbnails.

BUGS ADDRESSED

- Plugin window redraws offscreen when browser zoom is at more than 100%. [STR-3384]
- Searching now works with terms that include dashes. [STR-3197]
- Status of Work Order in e-mail after all Assets are approved is now correct. [STR-3385]
- Newly created DB now enforces max length for strings over 255 characters. [STR-3348]
- Folders are no longer visible when no permissions exist in content tree and permissions exist for another content tree. [STR-2813]
- MOS object proxy paths are now updated after a new proxy is generated. [STR-2802]
- AP asset names now get truncated if they are too long for the Asset name field. [STR-2876]
- MGN feed status is cleared once the retrieval recovers. [STR-3483]
- Deleted Asset locations no longer cause an infinite status update loop. [STR-3548]
- Work Order attachments are now placed in the same virtual directory as the parent Work Order. [STR-3547]
- Empty folders no longer remain in the file system when there's an error moving a file. [STR-3332]
- Searching twice on AP or MGN now shows the correct results. [STR-3326]
- Watch Folders Edit page points to the correct help link. [STR-3059]

- Watch Folders Add page points to the correct help link. [STR-3058]
- Install App page points to the correct help link. [STR-3057]
- Horizon Gateway page points to the correct help link. [STR-3056]
- File Systems page points to the correct help link. [STR-3055]
- Search Index page points to the correct help link. [STR-3054]
- Add/Edit Monitor page points to the correct help link. [STR-3053]
- Create New System Monitor page points to the correct help link. [STR- 3052]
- Work Orders now show only one "Created By" column in the attachments' browser. [STR-3339]
- AP Feed destination download always has a consistent size. [STR-3337]
- Error message when an Asset URI is too long has been made clearer. [STR-3331]
- Upload view form elements are no longer misplaced when view is too small. [STR-3305]
- Asset Browser no longer filters based on selected target. [STR-3283]
- Streamline.cloud is now MOS compatible with Inception.cloud.

UPGRADE CONSIDERATIONS

- Streamline.cloud v4.4 is incompatible with any version of Cloud Gateway less than v5.
- It is recommend that existing installs move to the Transcode Engine, however Vantage is still supported for proxies and thumbnails.

VERSION 4.3.2 – JANUARY 2020

BUGS ADDRESSED

- Running orders with the same domain and domain ID can no longer be created. [STR-3306]

UPGRADE CONSIDERATIONS

- If any running orders with the same domain and domain ID exist in the database at the time of upgrade, all except one will have their domains renamed to "_DELETEME_DOMAIN_X_".

VERSION 4.3.1 – JANUARY 2020

WHAT'S NEW

- **ASSET FILE RELATIONSHIP NAMING RULE**
Allow a naming rule for files that appends or prepends the relationship of an Asset to a file name.
- **FULFILL BY NAME WATCH FOLDER INGEST STRATEGY**
Allow generic watch folders to fulfill placeholders that match the same name as the file.
- **SELECT INEWS AS AN NCS**
Specify iNews as the newsroom when configuring MOS.
- **SELECT OCTOPUS AS AN NCS**
Specify Octopus as the newsroom when configuring MOS.
- **INGESTING INDICATION IN UPLOAD VIEW**
Upload view now shows a notification while ingesting files.

BUGS ADDRESSED

- Forwarded Cloud Gateway File System requests no longer fail due to HTTPS redirect. [STR-3189]
- MediaInfo crashing will no longer shutdown the Streamline VM. [STR-2600]
- Hidden files no longer get detected in watch folders. [STR-3310]
- Thumbnail now updates in Streamline Play Rundown Control after update. [STR- 3190]
- mosObj status and objAir fields now write empty tags instead of null. [STR-3275]
- objPaths will always use protocol of the running application server. [STR-3281]
- Clarified Asset Configuration help documentation. [STR-3089]
- Custom attributes can now be created when running SSL Elasticsearch. [STR-3119]
- Default values now set in Work Order Create dialog. [STR-3193]
- Downloading directly from a location no longer causes an out of memory error. [STR-3202]
- Transfers to targets now trigger when a new format is generated. [STR-3210]
- An error is no longer shown when setting choice values on an Asset. [STR-3224]

- Redundant MOS server no longer responds to NCS messages. [STR-3243]
- Service no longer fails to start from large temp directories. [STR-3245]
- Failed watch folder transcodes no longer leave empty directories. [STR-3246]
- Hidden files no longer prevent folders from being deleted. [STR-3247]
- File size check timeout correctly triggers an error. [STR-3248]
- Temporary ExifTool gets recreated when it has been deleted. [STR-3311]
- Deleting files in Microsoft Azure now work. [STR-3313]

UPGRADE CONSIDERATIONS

- By default, Streamline will only use file size as a check for incomplete files. When exporting videos from Mac's, there's a case when file size checks can be unpredictable and cause premature ingests of files. There's an experimental feature that will use MediaInfo to detect truncated files. To enable this feature, set the argument below to a value >0 (recommended value is 120):
 - `streamline.watch_folder_ingest.truncated_max_attempts=120`
- Avid iNews may send duplicate mosObjCreate messages for the same placeholder. This results in duplicate placeholders being created in Streamline. To prevent duplicate placeholders with the same name from being created, set this VM argument to true:
 - `streamline.mos.obj_create.unique_placeholders_name=true`
- Octopus reports an error for any MOS objects where the objTB field is not 29.97. To force Streamline to report all MOS object timebases as 29.97, set the following two VM arguments:
 - `streamline.mos.default_obj_tb=29.97`
 - `streamline.mos.force_default_obj_tb=true`
- To force a specific hostname to be reported for MOS object objPaths, then set the following VM argument:
 - `streamline.mos.obj_path.host=HOSTNAME`

VERSION 4.3.0 – MAY 2019

WHAT'S NEW

- **MAPPING NEWSROOM STORY DATA TO ASSET DATA**
Map predefined and custom newsroom data for MOS stories from Inception and ENPS to static and custom Asset attributes.
- **ASSET LIFE CYCLE**
Configure a schedule to manage the life cycle of Assets that match a user-defined filter. For Assets that match this filter, choose to only delete the Asset, or copy the Asset essence to another location before deleting.
- **CLOUD TRANSCODE OFFLOADING**
Streamline.cloud now offloads transcoding to a high-powered server farm to improve transcode delivery times.
- **MIRRORED FILE STORAGE FAILURE NOTIFICATION**
Receive bottom-line notifications when files fail to mirror to a storage.
- **MIRROR FILE STORAGE FAILURE RETRIES**
Failed mirrors will now retry automatically when unknown failures occur.
- **MIRRORED FILE STORAGE SYSTEM HEALTH**
View files that have failed to mirror to File Storages and trigger resyncing on demand.
- **SUPPORT FOR STREAMLINE STATUS IN STREAMLINE PLAY AND OVERDRIVE**
Including additional information for Streamline Play and OverDrive to display the Streamline Asset status within Rundown Control. Requires Streamline Play or OverDrive 18.3.4 and above.

BUGS ADDRESSED

- AP and MGN feeds can be deleted and disabled. [STR-3178]
- Transfer failures no longer cause a transfer loop when MOS enabled. [STR-3168]
- Description no longer has a defined character limit. [STR-3177]
- Tasks help link now goes to the correct documentation. [STR-2961]
- Long Asset file names no longer cause a data exception when uploaded. [STR-2950]
- Placeholders that exist in rundowns can no longer be deleted. [STR-3172]
- Minimum value for date attributes can now be saved. [STR-3169]

UPGRADE CONSIDERATIONS

- Streamline status within Streamline Play requires an additional message that may be disruptive to versions of Streamline Play or OverDrive prior to v18.3.4. If the status isn't needed, this feature can be turned off in Streamline using this VM argument:
 - `streamline.mos.mos_story_item.suppress_send_item_replace=true`

VERSION 4.2.1 – APRIL 2019

BUGS ADDRESSED

- MOS queue no longer builds with a single NRCS configured. [STR-2892]

VERSION 4.2.0 – APRIL 2019

WHAT'S NEW

- **XMP METADATA SUPPORT**
In addition to be able to read and ingest XMP metadata in Streamline, you can now write system and custom asset metadata to XMP fields in PNG, JPEG, GIF, TIF, and PSD files.
- **CUSTOM PARAMETER MAPPINGS**
Custom parameter field names can now be used when creating Mapping Profiles.
- **CREATE PLACEHOLDER IN ASSET BROWSER**
Placeholders can now be created from the Asset Browser.
- **MAPPING PROFILE ATTRIBUTE**
Mapping Profiles are now an Attribute of Asset and can be displayed in Asset Forms.
- **WATCH FOLDER EXTENSIONS FILTER**
Watch Folders can now filter out watched files based upon the extension of the file.
- **PLACEHOLDER WATCH FOLDER EXPIRATION IN MINUTES**
Placeholder Watch Folders can now have their expiration set within minutes of a file fulfilling a placeholder.
- **TRIM SPACES IN ASSET NAMES**
When "Rename Files to Asset Name" is turned on, Streamline will trim the name of an Asset to remove leading and trailing spaces.

- **DEFAULT MOS OBJPATH TO ASSET NAME**
MOS Placeholders now use the Asset name in the objPath field until it has been fulfilled.

BUGS ADDRESSED

- Creating Property Sets now save Parameters sequentially instead of a spam of concurrent requests. [STR-2874]
- Approval no longer shows as a mappable property. [STR-2718]
- Default File Storage will no longer fail to save when changes are made. [STR-2751]
- Blank custom dates no longer show as "Invalid Date" in Asset Details. [STR-2713]
- Assets no longer move virtual directories when Asset Request details change. [STR-2712]
- MXF files now work with XPression Transcoder. [STR-2704]
- Assets will now open from the grid when a custom column is double-clicked. [STR-2703]
- Fixed a race condition that prevented logins from working intermittently. [STR-2654]
- Editing Asset Metadata that exists in a completed Work Order no longer reverts the Work Order back to "Pending Assignment". [STR-2634]
- Streamline now sends MOS messages to both primary and redundant NCS servers to support ENPS fail-over. [STR-2632]
- Video Stream codecs are now read from files. [STR-2609]
- .DS_STORE files no longer get ingested from Watch Folders. [STR-2602]
- Watch Folder polling no longer causes a spam of database requests on each poll. [STR-2601]
- Improved and made configurable the ingest wait time for growing files. [STR-2600]
- Default target is now used in MOS objects from Asset Browser and Asset Details. [STR-2599]
- Temporary files for Watch Folders are now being deleted. [STR-2597]
- Placeholders created through ENPS MOS placeholder workflow no longer overflow the Asset Description field. [STR-2594]
- There's no longer a spam of errors for attempts to push MOS objects from other devices. [STR-2593]
- Messages now show for "Mirror File" Tasks in Task Viewer. [STR-2592]

- Handling roStorySend messages for approved ENPS stories no longer causes a NullPointerException. [STR-2591]
- There's no longer a constraint violation when trying to delete Assets. [STR-2590]
- Proxies generated before v4 of Streamline will now work with the HTML5 player. [STR-2581]

UPGRADE CONSIDERATIONS

- Upgrades from v4.1.1 or v4.1.2 to v4.2 cannot be done normally. Please follow the steps outlined here:
<https://transfer.rossvideo.com/f/17f8eaf241ee6b73>

VERSION 4.1.0 – DECEMBER 2018

WHAT'S NEW

- **PLACEHOLDER WATCH FOLDERS**
Use Watch Folders to fulfill placeholders using any option provided by Streamline's File System architecture. Must be enabled in the Asset configuration menu.
- **RENAME ASSET FILES TO ASSET NAME**
Enforce Asset essence, proxy, thumbnail and formats file names to be the same as the name of the Asset. Must be enabled in the Asset configuration menu. This does not apply retroactively to files once enabled.
- **WATCH FOLDER INGEST STRATEGIES**
Allow configurable strategies for how a Watch Folder should handle detected files.
- **"Move to File System" WATCH FOLDER INGEST STRATEGY**
Allow Watch Folders to move detected files to another arbitrary File System.
- **DESTINATION FILE STORAGE FOR "Create New Asset"**
Allow Watch Folders to specify a destination storage when using the "Create New Asset" Ingest Strategy.
- **HTML5 VIDEO PLAYER**
Use pure HTML5, for compatible browsers, when playing proxies in Streamline. Unsupported browsers fall back to the Flash player.
- **IMPROVED MOS STATUSES**
View more detailed MOS Statuses for Assets in a NRCS rundown. See the Streamline Configuration Guide for a list of statuses and explanations.

- **USE FILE SYSTEMS WITH WATCH FOLDER TRANSCODERS**
Use non-local file systems like Amazon S3 or Google Cloud Storage to transcode files.
- **IMPROVED CLOUD TRANSCODING**
Transcode proxies and thumbnails faster using a high-powered farm.
- **PREVIEW AUDIO FILES**
Audio files can now be previewed in the Asset Details view.
- **HARMONIZE TARGETS BEHAVIOUR**
The Asset Browser and Asset Details view now provide consistent naming and behaviour with the "Targets" toolbar item.
- **DISPLAY RUNDOWN WHEN DELETE IS PREVENTED**
See what rundown an Asset exists in when Streamlines prevents an Asset from being deleted.

BUGS ADDRESSED

- <approved> tag in MOS payload now writes correctly. [STR-2558]
- Asset Details View now opens when selected from NRCS when plugin is closed. [STR-2555]
- Asset Details now open when a new Asset is selected with one open in the plugin. [STR-2529]
- Work Order e-mail notifications are now sent every time a property is modified. [STR-2481]
- <objMetadataPath> is now populated in MOS placeholders. [STR-2552]
- User Guide in Streamline product no longer references Inception. [STR-2549]
- Configuration Guide no longer references Inception. [STR-2395]
- MySQL Galera Cluster Setup Guide no longer references Inception. [STR-2396]
- Single clicks no longer select multiple Assets in Tile View. [STR-2512]
- Errors no longer pop-up when resizing Asset Browser in Tile Mode. [STR-2511]
- Audio files no longer try to transcode upon ingest. [STR-2488]
- <objPath> no longer has extensions in the file name. [STR-2486]
- <name> field has been added back to <mosPayload>. [STR-2485]
- LDAP synchronization no longer triggers a spam of User updates. [STR-2481]
- Multiple Assignees no longer overflow in the Work Order Details view. [STR-2470]
- Disabled File Storages no longer get indexed. [STR-2467]

- Default Perspective feature from v3 has been added back. [STR-2447]
- Transcoders that have been used to generate files can now be deleted. [STR-2424]
- Editing XPression Transcoder no longer creates another copy. [STR-2419]
- "Name" field can no longer be removed the Asset Details form. [STR-2401]
- Task updates no longer fail unexpectedly with "Batch update exception". [STR-2378]
- FTP File Storages now index correctly. [STR-2376]
- Vantage Transcoder no longer fails with a NullPointerException. [STR-2374]
- Keep Alive hotkey now shows "Auto Logout Disabled" in the footer when enabled. [STR-2356]
- Federated Search no longer appears in Streamline Workbench. [STR-2319]
- Asset modified popup no longer appears with Asset Request form open. [STR-2311]
- Asset thumbnails now update in Work Order. [STR-2310]
- Asset thumbnails no longer flicker in Chrome when refreshing. [STR-2280]
- "Add to Story" no longer disappears if another non-plugin tab is open. [STR-2277]
- Upload button is no longer covered by the product logo. [STR-2275]
- Assets in Work Order are now ordered by creation date. [STR-2270]
- Selecting a perspective now works consistently. [STR-2209]
- Dragging windows around no longer leave views without a viewport. [STR-2208]
- Messages for failed transfer Tasks from validation rules are now more descriptive. [STR-2177]
- Tria News commissioning guide now reflects correct ports and protocols. [STR-2168]

UPGRADE CONSIDERATIONS

- Systems may have multiple "MXF" options present in the "Format" Choice List. If this occurs, duplicate options can and should be deleted.
- Cloud Gateway v3.1 or greater is required when using with Streamline Cloud.
- Watch Folder Transcoders with a common path between the "Input Folder" and "Output Folder" will be automatically upgraded to use File Systems. If no common path can be found between the "Input Folder" and "Output Folder", then the transcoders will be deleted.

- Watch Folders will automatically be converted to use the “Create New Asset” Ingest Strategy, with the default File Storage configured as the destination.
- “Storages” toolbar item is now named “Targets” again.

VERSION 4.0.4 – OCTOBER 2018

BUGS ADDRESSED

- MOS objects created through placeholder workflow in Inception can now be played by Streamline Play. [STR-2329]

VERSION 4.0.3 – OCTOBER 2018

WHAT’S NEW

- **CLOUD PROVISIONED TRANSCODERS**
Transcoders are now self-provisioned and not configurable in the cloud.
- **INCREASED WATCH FOLDER TIMEOUTS**
Watch folder and XPression transcoding now waits 10 minutes instead of 4 by default before timing out.

BUGS ADDRESSED

- Keyword searches now work with spaces. [STR-2318]
- Custom forms no longer reset to default after restart. [STR-2312]

VERSION 4.0.2 – OCTOBER 2018

BUGS ADDRESSED

- Targa file thumbnails now generate. [STR-2302]

VERSION 4.0.1 – SEPTEMBER 2018

WHAT’S NEW

- **CLOUD EDITION**
Deploy Streamline in the cloud. Visit www.streamline.cloud for more information.

- **ASSET REQUEST FORM IMPROVEMENTS**

The asset request form in work orders will now populate default values from the selected mapping profile.

BUGS ADDRESSED

- Orphaned file cleanup will no longer fail with a "ConstraintViolationException". [STR-2263]
- Plugin view will no longer allow a user to navigate away from a form with changes pending. [STR-2246]
- The Work Order Manager grid can no longer be edited when no data exists. [STR-2238]
- File Storages that exceed maximum licensed upon creation will be created but disabled. [STR-2217]
- Accounts configuration no longer shows without providers licensed. [STR-2214]
- Watch folder no longer gets stuck on "Applying Changes" when an error occurs. [STR-2212]
- External media provider search dropdowns now list the correct results. [STR-2020]
- Work Order thumbnail now updates after dragging and dropping a file onto the Asset. [STR-1171]

UPGRADE CONSIDERATIONS

- To ensure results in the Asset Browser and Work Order Manager are never stale when using Elasticsearch, the following entry must be added to the searchindex.ini file

```
<entry key="searchindex.elasticsearch.refresh.after.write">true</entry>
```

VERSION 4.0.0 – AUGUST 2018

WHAT'S NEW

- **ENTERPRISE EDITION**

Deploy a cluster of Streamline applications and databases in active-active configuration, for enterprise level scalability and redundancy.

- **MULTIPLE ASSET STORAGE LOCATIONS**

Manage your asset files in multiple locations at once.

- **STORAGE WORKFLOW RULES**
Configure rules for file naming, pathing, validation, ingesting and purging for asset storages.
- **INDEXING FILES ON STORAGE**
Add files directly to your storages and Streamline will automatically detect and ingest files into the system as assets.
- **CLOUD ASSET STORAGE**
Store assets using multiple cloud storage providers, including Amazon S3, Microsoft Azure, and Google Cloud. Available in Standard and Enterprise editions.
- **FTP ASSET STORAGE**
Store assets using an FTP server. Available in Streamline Production, Standard, and Enterprise editions
- **TRIA NEWS INTEGRATION**
Use Streamline to manage your videos on an Abekas Tria News video server.
- **REPORTING V2**
Improved engine providing a simpler user interface for creating and managing reports and historical results. Available in Standard and Enterprise editions.
- **SNMP MONITORING**
Monitor Streamline using Simple Network Management Protocol (SNMP).
- **SYSTEM HEALTH MONITOR**
Monitor functionality such as disk space, database connectivity, internet connectivity, MOS connection status, and users.
- **PRIMARY/REDUNDANT MOS SUPPORT**
Configure Streamline nodes as primary/redundant MOS devices for a newsroom computer system (NRCS).
- **ELASTICSEARCH INTEGRATION**
Search for Assets and Work Orders using Elasticsearch for fast results. Requires Elasticsearch 5.2.2.
- **SEARCHING CUSTOM ATTRIBUTES**
Utilize the full power of Streamline's search capabilities with custom attributes. Requires Elasticsearch indexing provider to be configured.
- **USER SESSION MONITORING**
Monitor and manage active user sessions.
- **WORK ORDER FOLDERS**
Organize work orders into virtual folders.
- **FOLDER PERMISSIONS**
Apply permissions to specific virtual folders for Assets and Work Orders.

- **TASK VIEWER**
Track progress of all background tasks, such as transcoding, file transfers, and watch folder ingesting
- **IMPROVED ASSET AND WORK ORDER LOCKING**
Allow explicit transfer of locks for work orders and assets detail forms.
- **“ADD TO STORY” BUTTON IN MOS PLUGIN**
Allows adding assets to a story in an NRCS using the “Add to Story” button in the Streamline MOS plugin.
- **CONFIGURABLE TIME SETTINGS**
Configure time zone and 12/24-hour clocks on a system or per-user basis.
- **CUSTOMIZABLE GRID FONT SIZES**
Change the grid font sizes on a system or per-user basis.

BUGS ADDRESSED

- AP Graphicsbank searching will fail if certain content fields were too large. [STR-2019]
- MOS object objPath now follows MOS protocol. [STR-1669]
- Approval tab no longer disappears when requesting approval in the plugin. [STR-2021]
- Approval can now be set using mapping profiles. [STR-1416]
- Asset Details view does not horizontally overflow by default. [STR-1976]
- Changing mapping profile in Asset Request now persists the new selection. [STR-2193]
- Adding a new Asset to a completed Work Order now reverts the state to Assigned or Pending Assignment. [STR-2107]

UPGRADE CONSIDERATIONS

- Internet Explorer 9 is no longer supported. Upgrades to v4 require Internet Explorer 10+.
- Elasticsearch 5.2.2 will need to be setup for custom attribute searching.
- If any deny permissions have been applied to root folders, they should be revisited to ensure they behave as desired in the updated model.
- All time zone values will be defaulted to Eastern Standard Time. Any systems or users outside of this time zone should consider revisiting the time zone settings.
- All applications nodes will need to have their license reactivated after upgrading.

- Upgrading from v2.0 requires an upgrade to v3.3 before upgrading to v4.0. [STR-2167]
- The column "Requested By" has been changed to "Created By" in the Work Order Manager. [STR-1850]
- Targets from versions less than v4.0 will be converted to file storages
- "Supported Assets Filter" will not be retained in the converted File Storage. This has been replaced by "Supported File Filter" Ingest Validation Rule. [STR-2108]
- "Preserve File Path" will not be retained in the converted File Storage. This has been replaced by the "Preserve File Path" Pathing Rule. [STR-2109]
- Watch folders now require a file system to be associated. Due to this, they will be disabled upon upgrade, and require manual intervention to create and associate the file system. [STR-2110]
- "Asset Temporary Storage" no longer exists. This has been replaced with using the JVM argument "java.io.tmpdir". [STR-2125]
- The ability to write metadata to a file has been removed. [STR-2116]
- All reports created before the upgrade will be deleted. [STR-1374]
- Selected perspectives will not always be highlighted in the main toolbar dropdown. [RWP-242]

KNOWN ISSUES

- Octopus requires all video timebases to be reported as 59.94 or 50, or it will reject the MOS messages. Streamline can be forced to use these timebases by setting these two VM arguments:
 - `wrapper.java.additional.20010=-Dstreamline.mos.default_obj_tb=59.94`
 - `wrapper.java.additional.20011=-Dstreamline.mos.force_default_obj_tb=true`
- iNEWS does not formally accept web-based MOS plugins, but will accept MOS object messages with the `<ncsItem>` and `<item>` wrappers. Streamline can be forced to remove these wrappers by setting these two VM arguments:
 - `wrapper.java.additional.20020=-Dstreamline.mos.ncs_item.exclude_item_wrapper=true`
 - `wrapper.java.additional.20021=-Dstreamline.mos.ncs_item.exclude_ncs_item_wrapper=true`
- Individual Remove/Upload buttons don't always appear Firefox. [STR-3179]
- Uploading many Assets at once occasionally stops midway through. [STR-2268]
- Although available in the UI, "File System" indexing type is not supported. [STR-2235]
- Keyword searches do not include account names for external media providers. [STR-1908]
- External provider filters will display in the Asset Browser even if no accounts have been configured. [STR-1349]
- URL decoding issues:
 - Cannot upload a file containing a '%' character in its name. [STR-4548]
 - Pre-4.4 files containing '%' or '+' characters in its name are unusable. [STR-4548]
- Internet Explorer quickly runs out of memory when using visual workflow jobs. [STR-4730]
- Mass delete in asset browser throws an error toaster on a non-indexed instance. [STR-4735]
- AP Media rate limit errors are not handled as image metadata retrieval errors. [STR-5062]
- Targets option in asset browser page does not display assets based on the supported files filter set. [STR-5070]

- File storage in targets dropdown is not greyed out when the asset is not compatible with that storage. [STR-5071]
- EVO file storage issues:
 - An asset that has been uploaded to an EVO file storage with an XMP mapping and is renamed more than once may be deleted. [STR-5074]
 - When writing XMP metadata to an asset that has been uploaded to an EVO file storage that has XMP metadata writing enabled, not every mapped field may be updated. [STR-5075]
 - One workaround is to disable thumbnails on Windows (Control Panel -> File Explorer Options -> View -> Always show icons, never thumbnails)
 - Another is to enable the kernel oplocks setting in EVO SMB configurations.
- When performing a manual mass delete of assets, the task manager may display a failed status and show an error in the logs. This is caused by a race condition in deleting the parent directories. The files will still be deleted on the disk. [STR-5203]

GETTING HELP

- Streamline's Online Help system opens in your default web browser from the '?' Help icon in the user interface.
- Our 24-hour hotline service provides access to technical expertise around the clock. After-sales service and technical support is provided directly by Ross Video personnel.
- During business hours (Eastern Standard Time), technical support personnel are available by telephone.
- After hours and on weekends, emergency technical support is available. A telephone-answering device will provide the names and phone numbers of technical support and field service personnel who are on call. These people are available to react to any problem and to do whatever is necessary to ensure customer satisfaction. For serious issue which need urgent attention and tracking, please ensure you are given a ticket number and refer to this in future communications.
 - Technical Support: (+1) 613-652-4886
 - After Hours Emergency: (+1) 613-349-0006