

# ***ROSS***

---

## **Cloud Gateway Configuration Guide**

**Version 6.2**

# Thank You for Choosing Ross

You've made a great choice. We expect you will be very happy with your purchase of Ross Technology. Our mission is to:

1. Provide a Superior Customer Experience
  - offer the best product quality and support
2. Make Cool Practical Technology
  - develop great products that customers love

Ross has become well known for the Ross Video Code of Ethics. It guides our interactions and empowers our employees. I hope you enjoy reading it below.

If anything at all with your Ross experience does not live up to your expectations be sure to reach out to us at [solutions@rossvideo.com](mailto:solutions@rossvideo.com).



David Ross  
CEO, Ross Video  
[dross@rossvideo.com](mailto:dross@rossvideo.com)

## Ross Video Code of Ethics

Any company is the sum total of the people that make things happen. At Ross, our employees are a special group. Our employees truly care about doing a great job and delivering a high quality customer experience every day. This code of ethics hangs on the wall of all Ross Video locations to guide our behavior:

1. We will always act in our customers' best interest.
  2. We will do our best to understand our customers' requirements.
  3. We will not ship crap.
  4. We will be great to work with.
  5. We will do something extra for our customers, as an apology, when something big goes wrong and it's our fault.
  6. We will keep our promises.
  7. We will treat the competition with respect.
  8. We will cooperate with and help other friendly companies.
  9. We will go above and beyond in times of crisis. *If there's no one to authorize the required action in times of company or customer crisis - do what you know in your heart is right. (You may rent helicopters if necessary.)*
-

# Ross · Cloud Gateway Configuration Guide

- Ross Part Number: 4950DR-010-6.2
- Release Date: May 8, 2025. Printed in Canada.
- Software Issue: 6.2

The information contained in this Guide is subject to change without notice or obligation.

## Copyright

© 2012 - 2025 Ross Video Limited. Ross® and any related marks are trademarks or registered trademarks of Ross Video Limited. All other trademarks are the property of their respective companies. PATENTS ISSUED and PENDING. All rights reserved. No part of this publication may be reproduced, stored in a retrieval system, or transmitted in any form or by any means, mechanical, photocopying, recording or otherwise, without the prior written permission of Ross Video. While every precaution has been taken in the preparation of this document, Ross Video assumes no responsibility for errors or omissions. Neither is any liability assumed for damages resulting from the use of the information contained herein.

## Patents

Patent numbers 4,205,346; 5,115,314; 5,280,346; 5,561,404; 7,034,886; 7,508,455; 7,602,446; 7,834,886; 7,914,332; 8307284, 2039277; 1237518; 1127289 and other patents pending.

## Warranty and Repair Policy

Ross Video Limited (Ross) warrants its Inception Server systems to be free from defects under normal use and service a time period of 15 months from the date of shipment:

If an item becomes defective within the warranty period Ross will repair or replace the defective item, as determined solely by Ross.

Warranty repairs will be conducted at Ross, with all shipping FOB Ross dock. If repairs are conducted at the customer site, reasonable out-of-pocket charges will apply. At the discretion of Ross, and on a temporary loan basis, plug in circuit boards or other replacement parts may be supplied free of charge while defective items undergo repair. Return packing, shipping, and special handling costs are the responsibility of the customer.

This warranty is void if products are subjected to misuse, neglect, accident, improper installation or application, or unauthorized modification.

In no event shall Ross Video Limited be liable for direct, indirect, special, incidental, or consequential damages (including loss of profit). Implied warranties, including that of merchantability and fitness for a particular purpose, are expressly limited to the duration of this warranty.

This warranty is TRANSFERABLE to subsequent owners, subject to Ross' notification of change of ownership.

---

## Extended Warranty

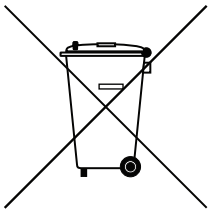
For customers that require a longer warranty period, Ross offers an extended warranty plan to extend the standard warranty period by one year increments. For more information about an extended warranty for your Inception Server system, contact your regional sales manager.

## Environmental Information

The equipment that you purchased required the extraction and use of natural resources for its production. It may contain hazardous substances that could impact health and the environment.

To avoid the potential release of those substances into the environment and to diminish the need for the extraction of natural resources, Ross Video encourages you to use the appropriate take-back systems. These systems will reuse or recycle most of the materials from your end-of-life equipment in an environmentally friendly and health conscious manner.

The crossed-out wheeled bin symbol invites you to use these systems.



If you need more information on the collection, reuse, and recycling systems, please contact your local or regional waste administration.

You can also contact Ross Video for more information on the environmental performances of our products.

## Use of Hazardous Substances in Electrical and Electronic Products (China RoHS)

Ross Video Limited has reviewed all components and processes for compliance to:

“Management Methods for the Restriction of the Use of Hazardous Substances in Electrical and Electronic Products” also known as China RoHS.

The “Environmentally Friendly Use Period” (EFUP) and Hazardous Substance Tables have been established for all products. We are currently updating all of our Product Manuals.

The Hazardous substances tables are available on our website at:

<http://www.rossvideo.com/about-ross/company-profile/green-practices/china-rohs.html>

### 电器电子产品中有害物质的使用

Ross Video Limited 按照以下的标准对所有组件和流程进行了审查：

“电器电子产品有害物质限制使用管理办法” 也被称为中国RoHS。

所有产品都具有“环保使用期限”（EFUP）和有害物质表。目前，我们正在更新我们所有的产品手册。

有害物质表在我们的网站：

<http://www.rossvideo.com/about-ross/company-profile/green-practices/china-rohs.html>

---

## Company Address

Ross Video Limited  
8 John Street  
Iroquois, Ontario  
Canada, K0E 1K0

Ross Video Incorporated  
P.O. Box 880  
Ogdensburg, New York  
USA 13669-0880

---

General Business Office: (+1) 613 • 652 • 4886

Fax: (+1) 613 • 652 • 4425

Technical Support: (+1) 613 • 652 • 4886

After Hours Emergency: (+1) 613 • 349 • 0006

E-mail (Technical Support): [techsupport@rossvideo.com](mailto:techsupport@rossvideo.com)

E-mail (General Information): [solutions@rossvideo.com](mailto:solutions@rossvideo.com)

Website: <http://www.rossvideo.com>

---



# Contents

<b>Introduction</b>	<b>1</b>
A Word of Thanks .....	1-1
About This Guide .....	1-2
Documentation Conventions .....	1-2
Getting Help .....	1-3
Contacting Technical Support .....	1-3
<b>System Requirements</b>	<b>2</b>
Hardware .....	2-2
Software .....	2-2
Ports .....	2-2
<b>Software Installation</b>	<b>3</b>
Before a Software Install .....	3-2
Installing Ross Cloud Gateway Database Software .....	3-2
Installing Ross Cloud Gateway Software .....	3-8
Setting a Custom Password for the Database Superuser .....	3-9
<b>MOS Device Configuration</b>	<b>4</b>
Record the NCS ID of Your Inception Cloud Service .....	4-2
Add MOS Devices to Your Inception Cloud Service .....	4-3
Create the “Cloud” User Account .....	4-6
Create the “Ross Inception Cloud” MOS Device .....	4-7
Add Local MOS Devices to Your Ross Cloud Gateway .....	4-8
Check Your MOS Configuration .....	4-9
<b>Cloud Configuration</b>	<b>5</b>
Configure Cloud Settings and Services .....	5-2
<b>File System Management</b>	<b>6</b>
Add a File System .....	6-2
Edit a File System .....	6-4
Delete a File System .....	6-4
<b>Configuring DataLinq™ Server Connections</b>	<b>7</b>
Add a DataLinq Server .....	7-2
Enable or Disable a DataLinq Server .....	7-3
Manage DataLinq Servers .....	7-4



# Introduction

## A Word of Thanks

Thank you for choosing Ross Cloud Gateway as part of your newsroom and social media management solution.

We are committed to providing you with the highest level of customer satisfaction possible. If, for any reason, you have questions or comments, please call Ross Video at +1-613-652-4886 or send us an e-mail at [techsupport@rossvideo.com](mailto:techsupport@rossvideo.com).

We hope that you visit our website [www.rossvideo.com](http://www.rossvideo.com) to stay up to date with ongoing software releases, join our customer forum and learn more about the complete range of Ross Video products.

Note that software maintenance and extended warranties are available for your system to protect and extend the life of your investment. Our sales team are more than happy to provide further information on the plans available. Members of our sales team promptly response to e-mails sent to: [solutions@rossvideo.com](mailto:solutions@rossvideo.com).

Again, thank you for your purchase of an Inception management solution from Ross Video. We are confident of your future pleasure with your choice.

Yours Sincerely,

A handwritten signature in black ink, appearing to read 'Peter Abecassis', with a long horizontal flourish extending to the right.

Peter Abecassis  
Marketing Product Manager – Inception  
[peter.abecassis@rossvideo.com](mailto:peter.abecassis@rossvideo.com)

## About This Guide

This guide contains the following chapters that cover the installation and configuration of Ross Cloud Gateway software:

1. “**Introduction**” summarizes the guide and provides important terms, conventions, and features.
2. “**System Requirements**” provides the recommended minimum hardware and software requirements to ensure that the Ross Cloud Gateway software functions correctly.
3. “**Software Installation**” instructions for installing Ross Cloud Gateway software on a Ross Cloud Gateway computer for the first time or after a system re-image.
4. “**MOS Device Configuration**” provides instructions for configuring the MOS devices in your local studio to connect with your Inception Cloud Service.
5. “**Configuring DataLinq™ Server Connections**” provides instructions on how to connect to XPression DataLinq Servers.

If you have questions pertaining to the operation of the Ross Video product, please contact us at the numbers listed in the section “**Contacting Technical Support**” on page 1–3. Our technical staff is always available for consultation, training, or service.

## Documentation Conventions

This guide uses special text formats to identify parts of the user interface, text that a user must enter, or a sequence of menus and submenus that a user must follow to reach a particular command.

### Interface Elements

Bold text identifies a user interface element such as a dialog box, a menu item, or a button. For example:

In the **Media Manager Client**, click **Channel 1** the **Channels** section.

### User Entered Text

Courier text identifies text that a user must enter. For example:

In the **File Name** box, enter `Channel01.property`.

### Referenced Guides

Italic text identifies the titles of referenced guides, manuals, or documents. For example:

For more information, refer to the section “**Twitter Configuration**” on page 3–6 in the *Inception User Guide*.

### Menu Sequences



Menu arrows identify a sequence of menu items that a user must follow to reach a particular command. For example: if a procedure step contains “**Server > Save As**,” a user should click the **Server** menu and then click **Save As**.

### Important Instructions

Star icons identify important instructions or features. For example:

- ★ After installing Ross Cloud Gateway software, you must obtain Inception feature licenses from Ross Video Technical Support before users can access Inception features.

## Getting Help

To access the Ross Cloud Gateway Online Help system, click the  **Help** icon in the main toolbar. For help about the currently open panel, click the  **Help** button in a panel title bar to view a help topic about the panel.

The Online Help system contains the following navigation tabs to locate and access Online Help topics:

- **Contents** — table of contents
- **Search** — full text search
- **Favorites** — preferred information storage and access

Ross Video also supplies print-ready PDF files of the *Inception Server Installation Guide*, *Inception Server Configuration Guide*, and the *Inception User Guides* on the Inception Server Software Installation DVD.

The Inception Online Help system contains information about how to configure various aspects of your Inception application. There are two separate Inception Online Help systems; one for the Configuration interface, and one for the User interface.

## Contacting Technical Support

Technical Support is staffed by a team of experienced specialists ready to assist you with any question or technical issue.

Ross Video has technical support specialists strategically located around the globe to ensure a prompt response to technical inquiries. Our primary technical support center is located in Ottawa, Ontario, Canada. In addition, we have offices in The United Kingdom (London), Australia (Sydney), and Singapore with satellite locations in New York City, The Netherlands, and China. As we expand our presence globally, we are constantly evaluating other key locations to have a local technical support specialist in order to better service our customers.

### North America

Our North America center located in Ottawa, Ontario, Canada and is open Monday to Friday 8:30 a.m. to 6:00 p.m. EST, with 24/7/365 on-call service after hours.

Our telephone number is: +1-613-686-1557

Toll free within North America: +1 844-652-0645

### EMEA

Our EMEA center is open Monday to Friday 8:30 a.m. to 5:00 p.m. GMT. After hours support is provided by our North America location.

Our telephone number is: +44 (0)1189502446

International toll free: +800 3540 3545

If the local support specialist is not available, your call will be transferred automatically to our North America center.

### Australia

Our Sydney, Australia office is located in Alexandria, NSW.

Our local support telephone number is: 1300 007 677

If the local support specialist is not available, your call will be transferred automatically to our North America center.

## Online

E-mail: [techsupport@rossvideo.com](mailto:techsupport@rossvideo.com)

Website: open a support request using the link <http://www.rossvideo.com/support/tech-support.html> to open a support request.

# System Requirements

Ross Video bases Ross products on mainstream PC hardware that use the Windows® operating system. To ensure that Ross software functions correctly, verify that the computer selected to run Ross software meets the recommended minimum requirements described in the following sections:

- Hardware
- Software
- Ports

## Hardware

Ross Video recommends the following minimum computer hardware configuration to run the Ross Cloud Gateway software:

- **CPU** — Intel® i5 or i7
- **RAM** — 4 to 8GB
- **Hard Drive** — Minimum 2 GB free
- **LAN** — 100 MB/s

## Software

Ross Video recommends the following minimum computer software configuration to run the Ross Cloud Gateway software:

- Microsoft® Windows® 7 64-bit English only with latest patches or better, or
- Microsoft® Windows® 2008 64-bit English only with latest patches or better

## Ports

As part of the Ross Cloud Gateway software installation process, the installer automatically creates the required firewall exceptions locally for the ports that the Ross Cloud Gateway uses to communicate with the Inception cloud service.

- ★ If an external firewall separates your Ross Cloud Gateway from your Inception Cloud Service, you may need to update the port exceptions on your external firewall to enable communication with the Inception Cloud Service.

The following table lists the ports on the Ross Cloud Gateway computer that the Ross Cloud Gateway uses to communicate with your Inception Cloud Service and internal MOS devices:

**Table 2.1 Ross Cloud Gateway Ports**

Port	Type	Description
80 443	HTTP/HTTPS	The Ross Cloud Gateway requires HTTP/HTTPS ports to be open between Ross Cloud Gateway Client computers and the Ross Cloud Gateway computer.
10540 10541 10542	MOS	The Ross Cloud Gateway requires MOS ports to be open between MOS devices and the Ross Cloud Gateway computer.

# Software Installation

This chapter provides instructions for installing Ross Cloud Gateway software on a Ross Cloud Gateway computer for the first time or after a system re-image.

This chapter discusses the following topics:

- Before a Software Install
- Installing Ross Cloud Gateway Database Software
- Installing Ross Cloud Gateway Software
- Setting a Custom Password for the Database Superuser

## Before a Software Install

Before you install Ross Cloud Gateway software on a Ross Cloud Gateway computer, perform the following tasks:

- Have a qualified Ross Video technician perform any required maintenance or repairs on the Ross Cloud Gateway computer.
- Exit all other Windows® programs currently running on the Ross Cloud Gateway computer.
- Temporarily disable antivirus software running on the Ross Cloud Gateway computer. Some heuristic-based intrusion detection systems prevent the installation of Ross Cloud Gateway software. Re-enable antivirus software after installing Ross Cloud Gateway software.

Contact a Ross Video sales representative for information about Inception Commissioning, Training, and Update services.

### For More Information on...

- Ross Video Technical Support phone numbers, refer to the section “**Contacting Technical Support**” on page 1–3.

## Installing Ross Cloud Gateway Database Software

Ross Cloud Gateway uses the MariaDB database to store and manage application data. Only the initial installation or recovery installations of Ross Cloud Gateway Server software on a computer require the installation of the MariaDB database software.

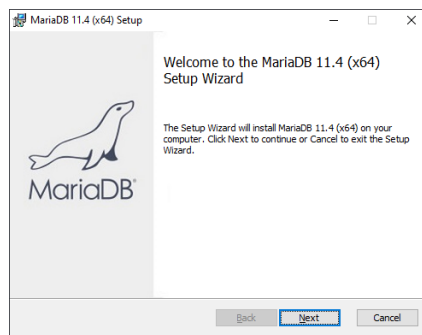
- ★ You must install and configure MariaDB database software on the Ross Cloud Gateway Server computer before installing Ross Cloud Gateway Server software on the computer.

Upgrading Ross Cloud Gateway Server software to a new version does not require a re-installation of the MariaDB database software.

### To install MariaDB database software for an initial install of Ross Cloud Gateway software

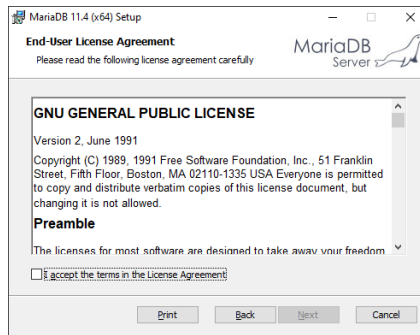
1. On the Ross Cloud Gateway Server computer, exit all currently running Windows® applications.
2. Locate the MariaDB database software installer, **mariadb-11.4.4-winx64.msi**, that you obtained from Ross Video Technical Support.
3. Double-click the **mariadb-11.4.4-winx64.msi** icon.

The **Setup** wizard opens.



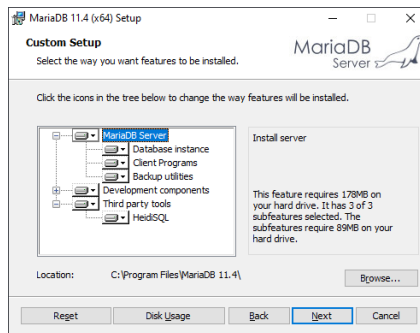
4. Click **Next**.

The **End-User License Agreement** screen opens.



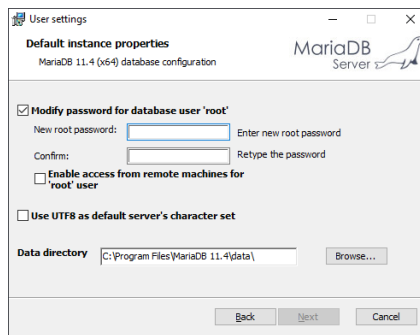
5. Read the **GNU GENERAL PUBLIC LICENSE**.
6. Select the **I accept the terms of the license agreement** check box.
7. Click **Next**.

The **Custom Setup** screen opens.



8. Click **Next**.

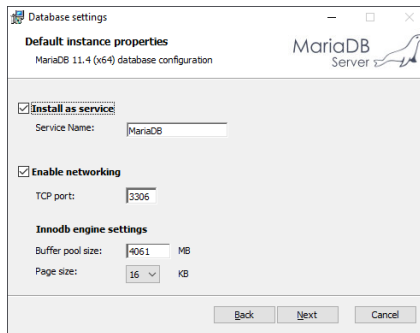
The **Default instance properties** screen opens.



9. Select the **Modify password for database user 'root'** check box.
10. In the **Password** box, enter a password that meets the password security requirements set by your organization.  
Record the entered password to replace the password `mariaadb` with your password when installing, reinstalling, or upgrading Ross Cloud Gateway Server software.
11. In the **Confirm** box, enter the same password as entered in the **Password** box.

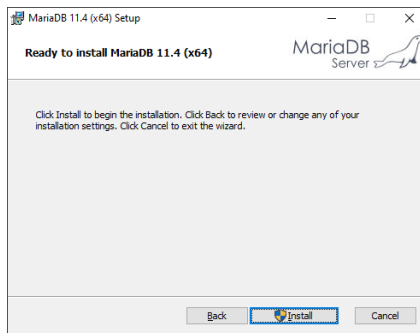
12. Record the **root** user **password** in a safe place.
13. Select the **Enable access from remote machines for 'root' user** check box.
14. Click **Next**.

The second **Default instance properties** screen opens.



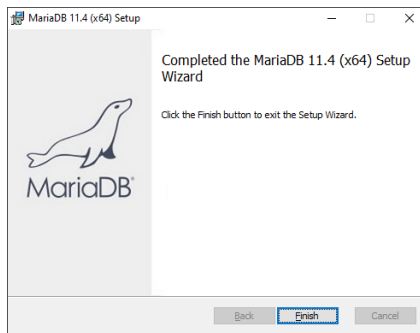
15. Click **Next**.

The **Ready to Install** screen opens.

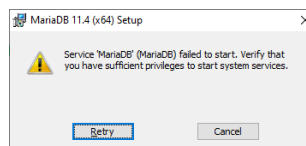


16. Click **Install**.

The **Installing MariaDB 11.4 (x64)** screen opens. A progress bar displays the installation status. After the installer finishes installing the required files, the **Completed the MariaDB 11.4 (x64) Setup Wizard** screen opens.



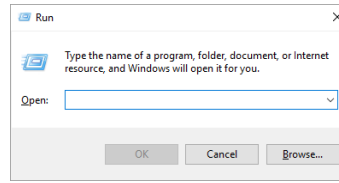
When the **Setup** wizard cannot start the **MariaDB** service, it displays the following alert:



Follow these steps to continue the MariaDB installation:

- a. From the Windows Desktop, press **Windows Key R**.

The **Run** dialog box opens.

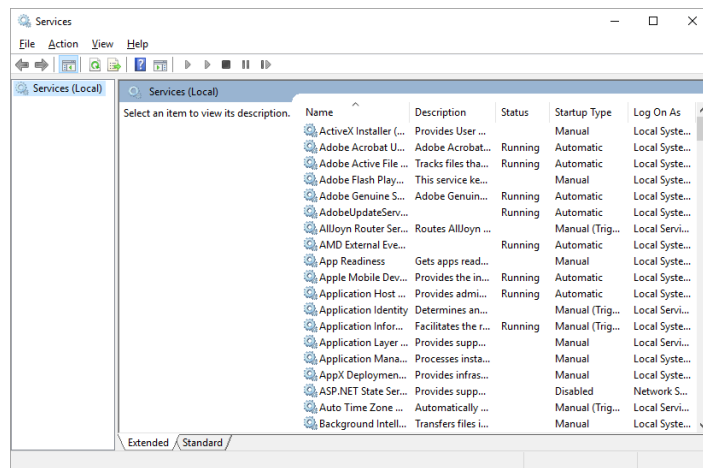


- b. In the **Open** box, type the following application name:

```
services.msc
```

- c. Click **OK**.

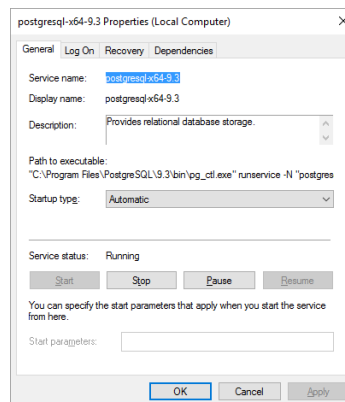
The **Services** window opens.



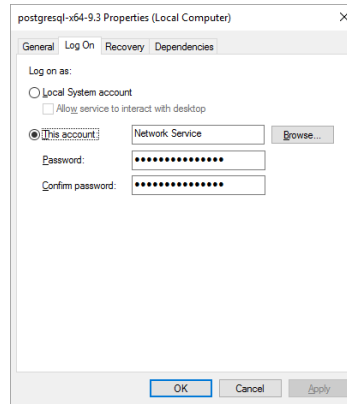
- d. In the **Services** list, locate the **MariaDB** service.

- e. Right-click the **MariaDB** service and select **Properties** from the shortcut menu.

The **MariaDB** dialog box opens.



- f. Click the **Log On** tab.  
The **Log On** tab opens.



- g. Select the **Local System Account** option.
- h. Click **OK**.  
The **MariaDB** dialog box closes.
- i. In the **Services** window, click Restart for the **MariaDB** service.
- j. Use the **File** menu to select **Exit**.  
The **Services** window closes.
- k. In the open **alert**, click **Retry**.

17. Click **Finish**.

The **Setup** wizard closes.

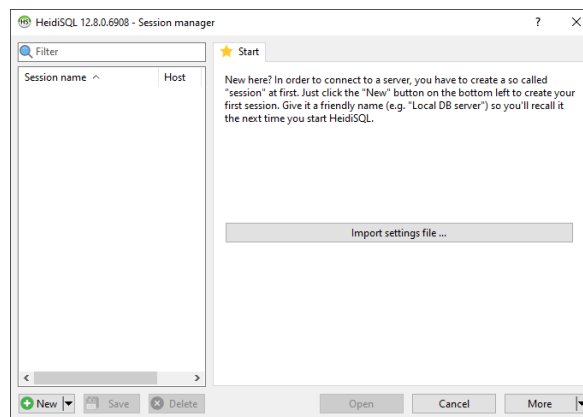
## Ross Cloud Gateway Database

You must create a MariaDB database named “cloudgateway” before you install Ross Cloud Gateway Server software.

### To create the database for Ross Cloud Gateway

1. From the Windows Desktop, use the **Windows** menu to select **All Programs > MariaDB 11.4 (x64) > HeidiSQL**.

The **HeidiSQL Session Manager** window opens.



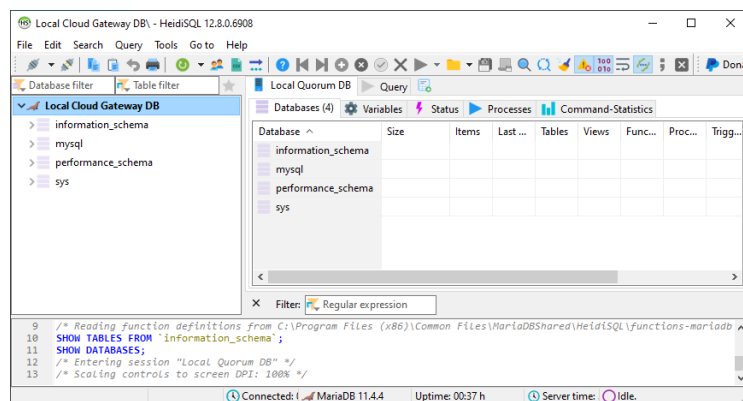
The first time you open HeidiSQL, you must create a session to connect to the MariaDB Server. Complete the following steps to create a MariaDB Server session:

- a. In the **Session name** column, right-click the **Unnamed** session name and select **Rename** from the shortcut menu.
- b. Enter a name that describes the session, for example: `Local Cloud Gateway DB`.
- c. In the **Password** box of the **Settings** tab, enter the **password** that was set in step 10 of the “**To install MariaDB database software for an initial install of Ross Cloud Gateway software**” on page 3–2.
- d. Click **Save**.

The Session Manager saves the defined session.

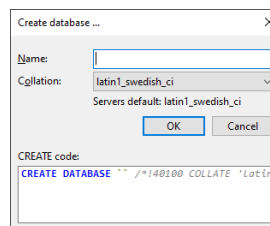
2. In the **Session name** column, select the session to connect to the MariaDB Server.
3. Click **Open**.

The HeidiSQL Session Manager window closes, and the Session window opens.



4. In the **Object Browser** tree view, right-click the **session name** and select **Create new > Database** from the shortcut menu.

The **Create database** dialog box opens.



5. In the **Name** box, enter the following name:

`cloudgateway`

6. Click **OK**.

The **Create database** dialog box closes, and HeidiSQL adds the **cloudgateway** database to the **Object Browser** tree view.

7. In the **Session** window, use the **File** menu to select **Exit**.

The **Session** window closes.

# Installing Ross Cloud Gateway Software

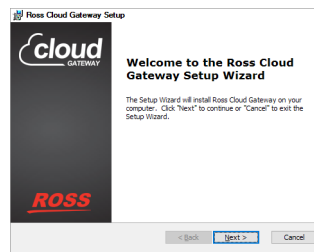
After installing and configuring the MariaDB database software on the Ross Cloud Gateway computer, you can install the Ross Cloud Gateway software.

## To install Ross Cloud Gateway software

1. On the Ross Cloud Gateway computer, exit all currently running Windows® applications.
2. Temporarily disable antivirus software running on the Ross Cloud Gateway computer.  
Some heuristic-based intrusion detection systems prevent the installation of Inception software.
3. Insert the Inception software DVD into the DVD-ROM drive.
4. On the Desktop, open **My Computer**.
5. In the **My Computer** explorer window, open the **DVD-ROM Drive**.
6. Double-click **CloudGateway-6.2.x.xx-xxxx.msi**.

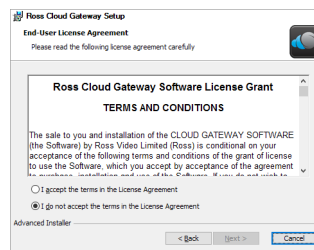
If a **Security Warning** message displays, click **Run**.

The **Ross Cloud Gateway Setup** wizard opens.



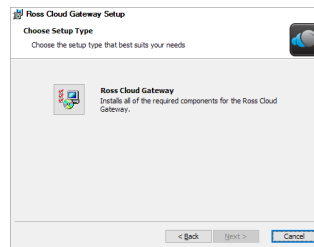
7. Click **Next**.

The **End-User License Agreement** screen opens.



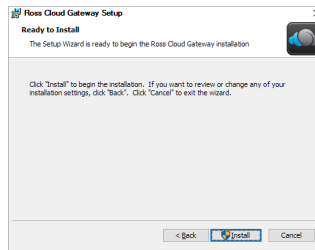
8. Read the **Ross Cloud Gateway Software License Grant**.
9. Select the **I accept the terms of the license agreement** option.
10. Click **Next**.

The **Choose Setup Type** screen opens.



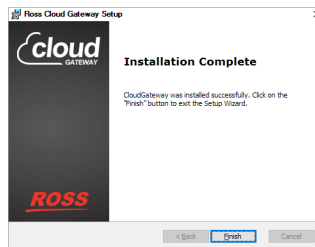
11. Click the **Ross Cloud Gateway** icon.

The **Ready to Install** screen opens.



12. Click **Install**.

After installation of the Ross Cloud Gateway is complete, the **Installation Complete** screen opens.



13. Click **Finish**.

The **Ross Inception Setup** wizard closes and adds the **Ross Cloud Gateway** icon to the Desktop. The Ross Cloud Gateway starts automatically after the installation of the Ross Cloud Gateway software.

14. Re-enable antivirus software.

## Setting a Custom Password for the Database Superuser

During the installation of the MariaDB database, you must set the password for the database superuser and service account named `root`. If the password set for `root` is not the standard password of `root`, the installer must configure Cloud Gateway software to use the custom `root` password.


### To set a custom root password

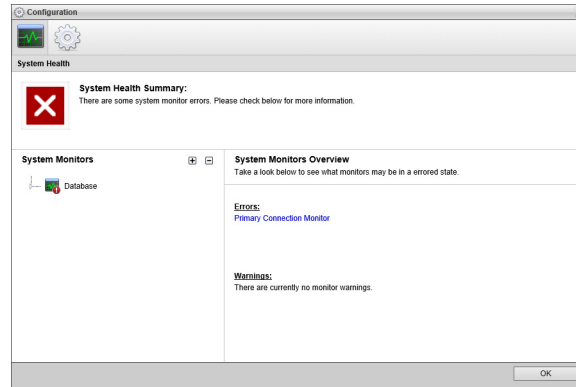
1. Use one of the following methods to open the **Ross Cloud Gateway** web page:
  - On the Desktop, double-click the **Ross Cloud Gateway** icon.
  - Use the **Start** menu to select **All Programs > Ross Cloud Gateway > Ross Cloud Gateway**.


The **Cloud Gateway Login** screen opens. If the **Cloud Gateway Login** screen does not open, please contact Ross Video Technical Support.

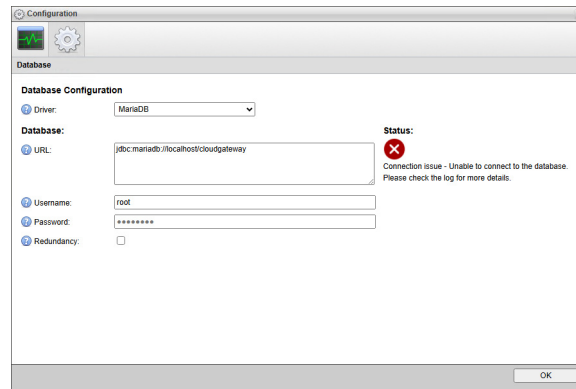
2. At the **Cloud Gateway Login** screen, enter the following user name and password in the provided boxes:
  - **Username** — maintenance
  - **Password** — maintenance
3. Click **Login**.

You are logged into the Ross Cloud Gateway Server.

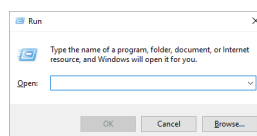
- In the **Tools** section of the Inception toolbar, click the  **Configuration** icon.  
The **System Monitor** panel of the **Configuration** window opens.



- On the **Configuration** window toolbar, click the  **System** icon.  
The **System** panel opens.



- In the **Password** box of the **Database** tab, enter the custom password set for the database superuser named **root**.
- Click **OK**.  
An **Alert** dialog box opens.
- In the **Alert** dialog box, click **OK**.  
The **Alert** and **Configuration** dialog boxes close.
- On the Ross Cloud Gateway toolbar, click the **Logout** icon.  
A **Message** dialog box opens.
- In the **Message** dialog box, click **OK** to log out of Inception.
- Close the web browser.
- From the Windows Desktop, press **Windows Key+R**.  
The **Run** dialog box opens.

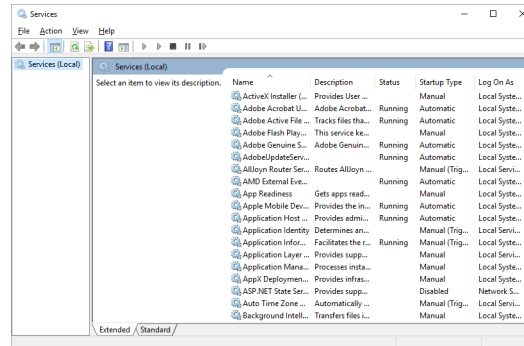


13. In the **Open** box, type the following application name:

`services.msc`

14. Click **OK**.

The **Services** window opens.



15. In the **Services** list, locate and select the **Ross Cloud Gateway** service.

16. Click **Restart** for the **Ross Cloud Gateway** service.

17. Use the **File** menu to select **Exit**.

The **Services** dialog box closes.



# MOS Device Configuration

Inception uses the Media Object Server (MOS) protocol to connect the MOS devices that you use in your studio with your Inception Cloud Service. To connect your studio MOS devices with your Inception Cloud Service you need to add MOS devices to your Inception Cloud Service and your Ross Cloud Gateway.

This chapter discusses the following topics:

- Record the NCS ID of Your Inception Cloud Service
- Add MOS Devices to Your Inception Cloud Service
- Create the “Cloud” User Account
- Create the “Ross Inception Cloud” MOS Device
- Add Local MOS Devices to Your Ross Cloud Gateway
- Check Your MOS Configuration

# Record the NCS ID of Your Inception Cloud Service

Before you can start adding MOS devices to your Inception Cloud Service and Ross Cloud Gateway, you need to record the NCS ID set for your Inception Cloud Service.

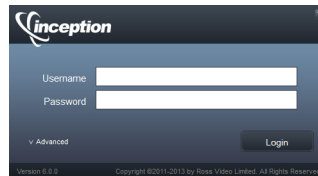
## To record the NCS ID for your Inception Cloud Service

1. Use a web browser to open the Inception Cloud Service web page provided to you. Inception Cloud Service URLs use the following format:

`https://<Customer Name>.inception.cloud`

2. Inception supports the following web browsers:
  - Microsoft Internet Explorer® version 9 or greater
  - Microsoft Edge version 12 or greater
  - Mozilla Firefox® version 3.6 or greater
  - Google Chrome™ browser version 17.x or higher
  - Apple Safari® version 5.1.x or greater

The **Login** panel opens.




3. At the **Inception Login** screen, enter the **Username** and **Password** provided by Ross Video to log into your Inception Cloud Service as an administrator:

4. Click **Login**.

Inception opens.

5. On the main toolbar, click the  **Configuration** icon.

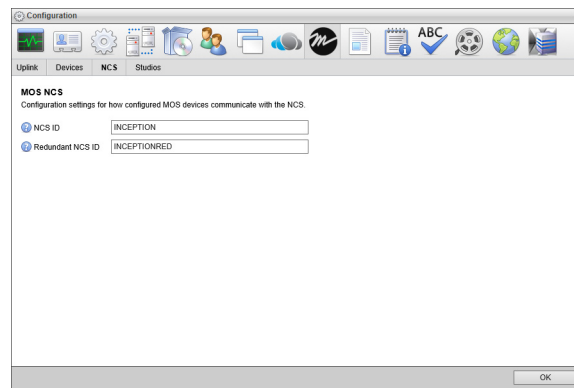
The **Configuration** window opens.

6. On the **Configuration** window toolbar, click the  **MOS** icon.

The **MOS** panel opens.

7. Click the **NCS** tab.

The **NCS** tab opens.




8. Record NCS ID displayed in the **NCS ID** box.
9. Click **OK** to close the **Configuration** window.

## Add MOS Devices to Your Inception Cloud Service

For each MOS device that you use in your studio you must add a MOS device to your Inception Cloud Service. When you use Inception as a NCS, Inception uses MOS to enable journalists to see, use, and control MOS devices inside of a Broadcast story. Journalists use a plugin associated with a MOS device to insert and control the device in a Broadcast story.

### To add a MOS device to your Inception Cloud Service

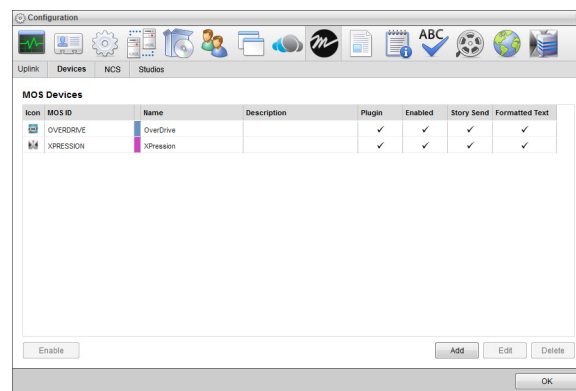
1. Log in to your Inception Cloud Server as an administrator.
2. As an administrator on your Inception Cloud Server, click the  **Configuration** icon in the main toolbar.  
The **Configuration** window opens.

3. On the **Configuration** window toolbar, click the  **MOS** icon.

The **MOS** panel opens.

4. Click the **Devices** tab.

The **Devices** tab opens.



5. Click **Add**.

The **Create MOS Device** page opens and displays the **Device Settings** section for the new MOS device.

6. Use the **Device** list to select the MOS device. If your MOS device is not included in the **Device** list, select **Uncertified Device**.

The **Device Settings** section updates with setting values for the selected MOS device.

7. In the **MOS ID** box, enter the MOS ID of the MOS device.
8. In the **MOS ID Mask** box, enter a pattern of characters, divider periods “.”, and the \* wild card to match the MOS ID of one or more MOS devices of the same type in different locations. The \* wild card matches zero or more characters in a MOS ID. Leave this box blank for devices that do not support MOS redirection.

★ You must include at least one divider period “.” in your MOS ID Mask to make it a valid mask.

Profile 6 of the MOS Protocol recommends using the following naming convention for MOS IDs for MOS redirection:

```
<family>.<machine>.<location>.<enterprise>.mos
```

MOS redirection example,

MOS Device 1	MOS Device 2
<ul style="list-style-type: none"><li>• <b>MOS ID:</b> Ross.CG.Ottawa.CBC.mos</li><li>• <b>MOS ID Mask:</b> Ross.CG.*.CBC.mos</li></ul>	<ul style="list-style-type: none"><li>• <b>MOS ID:</b> Ross.CMS.Ottawa.CBC.mos</li><li>• <b>MOS ID Mask:</b> none</li></ul>
<ul style="list-style-type: none"><li>• The <b>Device 1</b> MOS plugin opens for MOS objects with the MOS ID Ross.CG.Ott.CBC.mos</li><li>• The <b>Device 1</b> MOS plugin opens for MOS objects with the MOS ID Ross.CG.Van.CBC.mos</li><li>• The <b>Device 2</b> MOS plugin opens for MOS objects with the MOS ID Ross.CMS.Ott.CBC.mos</li><li>• A MOS plugin does not open for MOS objects with the MOS ID Ross.CMS.Van.CBC.mos</li></ul>	

9. In the **Host** box, enter the hostname or IP address of the MOS device.
10. Use the **MOS Version** list to select the version of the MOS protocol used by the MOS device.
11. In the **Name** box, enter a name for the MOS device.
12. In the **Description**, enter a description for the MOS device.
13. Select the **Enable** check box to enable the MOS device.

You can create any number of MOS devices in Inception, but the number of channels that you can enable for MOS devices at one time is limited by the terms of your Inception license. Clear this check box to disable the MOS device and release a channel.

14. Click **Next**.

The next page opens and displays the **MOS Plugin** section for the new MOS device.

15. If you selected **Other Device** from the **Device** list, use the **Plugin** list to select the type of plugin used by your MOS device.
16. When your selected MOS device uses an **ActiveX Plugin**, do the following:
  - a. If you selected **Other Device** from the **Device** list, enter the Class ID of the ActiveX plugin used by your MOS device in the **Class ID** box.
  - b. In the **Parameters** box, enter the parameter settings for the ActiveX plugin.
  - c. Select the **Use Proxy** check box to open the ActiveX plugin in the Inception Story Editor panel. Clear this check box to open the ActiveX plugin in a web browser window.
17. When your selected MOS device uses a **Web Plugin**, do the following:
  - In the **URL** box, enter the URL with which to access the MOS device web plugin.
  - Select the **Use Single Sign-On** check box to enable users with matching logins on Inception and MOS device systems to automatically log in to the MOS device web plugin.

18. Click **Next**.

The next page opens and displays the **Appearance** and the **MOS Settings** sections for the new MOS device.

19. In the **Appearance** section, use the **Icon** list to select an icon to identify the MOS device.

If the icons in the list are not appropriate for your MOS device, do the following:

- a. Use the **Icon** list to select **Upload an Icon**.

Inception displays a **Browse** button.

- b. Click **Browse**.

The **File Upload** dialog box opens.

- c. Use the **File Upload** dialog box to select the image file to use as the icon for your MOS Device.
- d. Click **Open**.

Inception adds the image contained in the selected image file to the **Icon** list as the **Uploaded Icon** option, and automatically selects the uploaded image as the icon for your MOS device. You can only upload one image to the **Icon** list at a time. Uploading another image to the **Icon** list replaces the current uploaded image with the new image.

- 20. Click the **Background** color square to use a color picker to select the background color that Inception uses to display the MOS device in a Broadcast story.

As you click in the color picker, the box to the right of the color square displays the HTML color code of the selected color. You can also enter an HTML color code in the box to the right of the color square. As you enter an HTML color code, the color square displays the color of the entered code.

- 21. Click the **Foreground** color square to use a color picker to select the text color that Inception uses to display the MOS device in a Broadcast story.

As you click in the color picker, the box to the right of the color square displays the HTML color code of the selected color. You can also enter an HTML color code in the box to the right of the color square. As you enter an HTML color code, the color square displays the color of the entered code.

- 22. In the **MOS Settings** section, select the **Enable Story Send** check box to send story text and MOS items in a Broadcast story to the MOS device.

- 23. Select the **Send Formatted Text** check box to include HTML markup with story text sent to the MOS device.

For MOS devices that do not use HTML formatting, clear this check box to not send HTML markup with the story text.

- 24. Select the **Enable Object Browsing** check box to use the **MOS Objects** panel to add MOS objects from the MOS device to a Broadcast story.

To make the **MOS Objects** panel available in Inception, you must select this option for at least one MOS device.

- 25. Select the **Synchronize Objects** check box to set the delay parameter for the mosReqAll message that Inception sends to a MOS device to request a list of MOS objects from the device. For information about the mosReqAll message, refer to the section “**3.2.1 mosReqAll - Request All Object Data from MOS**” in the MOS Protocol.

Inception displays the **Synchronization Interval** box below the **Synchronize Objects** check box.

- 26. In the **Synchronization Interval** box, enter the amount of time for the delay parameter in the mosReqAll message that Inception sends to a MOS device to request a list of MOS objects from the device. The time unit for this setting depends on the MOS device.

This box is only available after selecting the **Synchronize Objects** check box.

- 27. Select the **Enable Placeholders** check box to enable users to add placeholders to Broadcast stories for MOS objects that do not yet exist on the MOS device.

Inception exchanges the placeholder with the requested MOS object when the MOS object is created on the MOS device.

28. Select the **Require Item Status** check box for MOS devices that send RO Element Status messages to display the status of the MOS device in the **MOS Status** and **MOS Device** columns of the table in the **Running Order** panel.

Clear this check box for MOS devices that do not send RO Element Status messages to stop the display of the default **Not Ready** status in the **MOS Status** and **MOS Device** columns in the **Running Order** panel.

29. Select the **Enable Timing Control** to allow the MOS device to take the next or previous story in a running order on air during running order playout.

30. Click **Save**.

Inception adds the new MOS device to the **MOS Devices** list.


#### For More Information on...

- about managing MOS devices, refer to your *Inception Configuration Guide*.

## Create the “Cloud” User Account

The “Cloud” user on your Inception Cloud Service links to your Ross Cloud Gateway to enable the Inception Cloud Service to access the MOS devices in your studio.

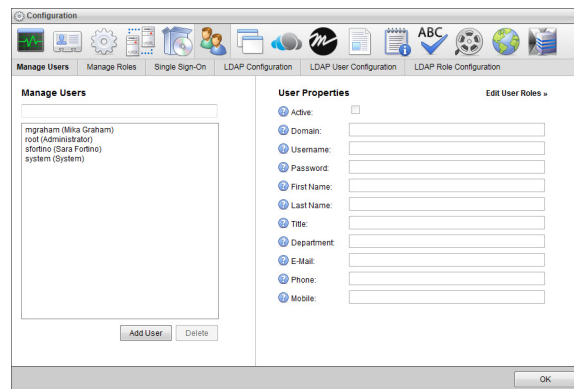
#### To create the “Cloud” user account

1. As an administrator on your Inception Cloud Server, click the  **Users** icon on the **Configuration** window toolbar.

The **Users** panel opens.

2. Click the **Manage Users** tab.

The **Manage Users** tab opens.



3. In the **Manage Users** section, click **Add User**.

Inception automatically saves property values set for a new user.

4. In the **User Properties** section, select the **Active** check box to make the user operational.

Clear this check box to deactivate a user. Inception retains information associated with an inactive user account but does not allow you to use the account to log in to your Inception Cloud Service.

5. In the **Username** box, enter a name for the “Cloud” user.

Usernames are case sensitive.

6. In the **Password** box, enter a password of at least five characters for the user. All user accounts must have a password.

Passwords are case sensitive.

7. Click **Edit User Roles and API Access**.

The **User Roles** list opens.

8. Select the **Enable API** check box to enable the user to make API requests.

The **API Key** field displays the API key that Inception automatically assigned to the user.

9. Record the API key displayed in the **API Key** field.

10. Click **OK**.

The **Configuration** window closes.

## Create the “Ross Inception Cloud” MOS Device

The “Ross Inception Cloud” MOS device on your Ross Cloud Gateway that works with your Inception Cloud Service “Cloud” user to connect the MOS devices in your studio with your Inception NCS running in the cloud.

### To create the “Ross Inception Cloud” MOS device on your Ross Cloud Gateway

1. Use one of the following methods to open the **Ross Cloud Gateway** web page:

- On the Desktop, double-click the **Ross Cloud Gateway** icon.
- Use the **Start** menu to select **All Programs > Ross Cloud Gateway > Ross Cloud Gateway**.


The **Cloud Gateway Login** screen opens. If the **Cloud Gateway Login** screen does not open, please contact Ross Video Technical Support.

2. At the **Cloud Gateway Login** screen, enter the following user name and password in the provided boxes:


- **Username** — root
- **Password** — password

3. Click **Login**.

You are logged into the Ross Cloud Gateway.

4. In the **Tools** section of the Ross Cloud Gateway toolbar, click the  **Configuration** icon.

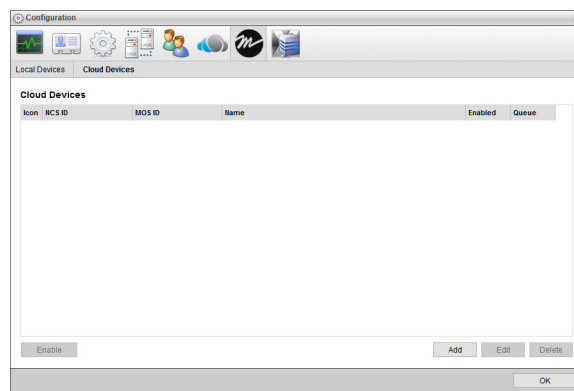
The **Configuration** window opens.

5. On the **Configuration** window toolbar, click the  **MOS** icon.

The **MOS** panel opens.

6. Click the **Cloud Devices** tab.

The **Cloud Devices** tab opens.



7. Click **Add**.

The **Create Cloud Device** page opens and displays the **Cloud Settings** section for the new MOS device.

8. Use the **Device** list to select **Ross Inception Cloud**.
9. In the **NCS ID** box, enter the NCS ID of your Inception Cloud Service.  
You recorded the NCS ID of your Inception Cloud Service in step 8 in the procedure “**To record the NCS ID for your Inception Cloud Service**” on page 4–2.
10. In the **Host** box, enter the host name of your Inception Cloud Service. The host name of an Inception Cloud Service uses the following format:  
`<Customer Name>.inception.cloud`
11. In the **Name** box, enter a name for your “Ross Inception Cloud” MOS device.
12. In the **API Key** box, enter the API Key of the “Cloud” user you created on your Inception Cloud Service for authentication.  
You recorded the API Key of the “Cloud” user in step 9 in the procedure “**To create the “Cloud” user account**” on page 4–6.
13. Click **Save**.  
Ross Cloud Gateway adds the “Ross Inception Cloud” MOS device to the **Cloud Devices** list.

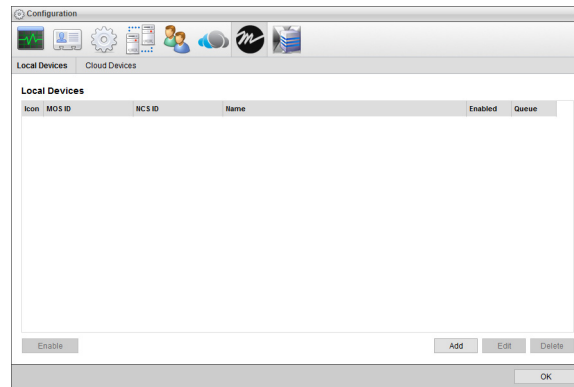
## Add Local MOS Devices to Your Ross Cloud Gateway

For each MOS device that you added to your Inception Cloud Service you must add a matching local MOS device to your Ross Cloud Gateway.

### To add a local MOS device to your Ross Cloud Gateway

1. In the **MOS** panel, click the **Local Devices** tab.

The **Local Devices** tab opens.



2. Click **Add**.  
The **Create Local Device** page opens and displays the **Device Settings** section for the new local MOS device.
3. Use the **Device** list to select the MOS device. If your MOS device is not included in the **Device** list, select **Uncertified Device**.  
When you select **Uncertified Device** from the **Device** list, the **Type** list displays below the **Device** list. Use the **Type** list to select the type of uncertified device to add as a local MOS device.
4. In the **MOS ID** box, enter the MOS ID of the local MOS device.  
When adding a newsroom as local MOS device, the **MOS ID** box changes to the **NCS ID** box. In the **MOS ID** box, enter the NCS ID of your newsroom computer system.
5. In the **Host** box, enter the host name or IP address of your local MOS device.
6. In the **Name** box, enter a name for the local MOS device.

7. To allow additional connections to the local MOS device, complete the following steps:
  - a. Click **Add** to the right of the **Inbound Hosts** box.

An **Alert** opens.
  - b. In the **Alert**, enter the hostname or IP address of a host to connect to the local MOS device.
  - c. Click **OK**.


The **Alert** closes and the entered hostname or IP address displays in the **Inbound Hosts** box.
  - d. Repeat this procedure to add additional host connections.
8. Click **Save**.

Inception adds the new local MOS device to the **Local Devices** list.
9. Click **OK** to close the Configuration window.
10. On your MOS device enter the following information:
  - **NRCS ID** — enter the NRCS ID of your Inception Cloud Service.
  - **NRCS Host Server** — enter the host name or IP address of your Ross Cloud Gateway.
11. Repeat this procedure for each MOS device that you added to your Inception Cloud Service.

## Check Your MOS Configuration


With all your connections and MOS devices correctly configured, your local MOS devices can communicate with your Inception Cloud Service through your Ross Cloud Gateway. You can check your configuration by creating a running order on your Inception Cloud Service.

### To check your MOS configuration



1. On your Inception Cloud Service, create a Running Order with Broadcast stories that contain MOS objects for the MOS devices in your studio.
2. In the **Running Order** panel, click or tap the  **Settings** icon.

The **Edit Running Order** dialog box opens.
3. Click the **MOS Devices** tab.

The **MOS Devices** tab opens.
4. In the **MOS Device Monitors** list, select the check boxes to the right of the MOS devices you want to monitor the playout of your running order. Clear the check box to the right of a MOS device to stop the device from monitoring playout of your running order.
5. Click **OK**.

The selected MOS devices are ready to monitor the running order when you play it out.
6. In the **Running Order** panel, click or tap the  **Monitor** icon.

An **Alert** opens.
7. Click **OK**.

MOS device monitoring starts for the selected devices, and the  **Monitor** icon changes to  **Unmonitor**.

Now you are ready to go!

## Troubleshooting

- When running order sends large amounts of MOS information, it may take a minute or two to show up on the device. MOS messages start to flow after the **Monitor** icon in the **Running Order** panel turns green, indicating that the running order is successfully monitored.

To check progress, open the **MOS Devices** tab in the **Devices** panel of the **Configuration** window and check for MOS messages in the **Queue** for your MOS device.

- When the number of MOS messages in Queue of a MOS device is decreasing you may just have to wait a short time while the MOS messages go out to the MOS device.
- When the number of MOS messages in Queue of a MOS device does not decrease after a few minutes and or the **Monitor** icon in the **Running Order** panel is yellow, communication was not correctly established, and you may need to check your MOS device configuration.

# Cloud Configuration

Before you can connect to your Ross Cloud Gateway Server, you must configure cloud settings and services for your server.

This chapter discusses the following topics:

- Configure Cloud Settings and Services

## Configure Cloud Settings and Services

The Cloud Gateway panel in the Configuration window contains of the settings for cloud configuration and cloud services.

### To configure cloud settings and services

1. Use one of the following methods to open the **Ross Cloud Gateway** web page:

- On the Desktop, double-click the **Ross Cloud Gateway** icon.
- Use the **Start** menu to select **All Programs > Ross Cloud Gateway > Ross Cloud Gateway**.


The **Cloud Gateway Login** screen opens. If the **Cloud Gateway Login** screen does not open, please contact Ross Video Technical Support.

2. At the **Cloud Gateway Login** screen, enter the following user name and password in the provided boxes:


- **Username** — root
- **Password** — password

3. Click **Login**.

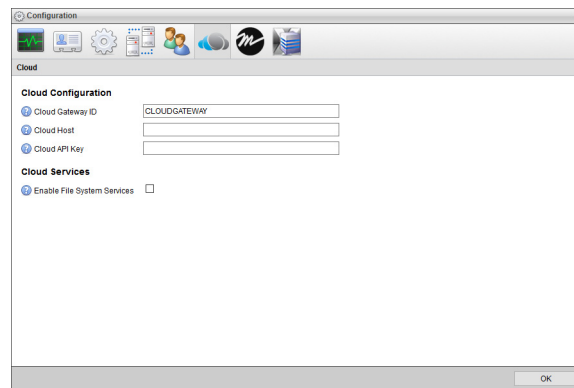
You are logged into the Ross Cloud Gateway.

4. In the **Tools** section of the Ross Cloud Gateway toolbar, click the  **Configuration** icon.

The **Configuration** window opens.

5. On the **Configuration** window toolbar, click the  **Cloud Gateway** icon.

The **Cloud** panel opens.



6. In the **Cloud Configuration** section, enter a unique identifier for the Ross Cloud Gateway Server in the **Cloud Gateway ID** box.

7. Enter in the **Cloud Host** box the hostname of the **Inception Cloud Service** with which to connect the Ross Cloud Gateway Server.

8. In the **Cloud API Key** box, enter the API Key of the “Cloud” user you created on your Inception Cloud Service for authentication.

You recorded the API Key of the “Cloud” user in step 9 in the procedure “**To create the “Cloud” user account**” on page 4–6.

9. In the **Cloud Services** section, select the **Enable File System Services** check box to enable the **Inception Cloud Service** entered in the **Cloud Host** box to access file systems configured on the Ross Cloud Gateway Server.

10. Click **OK**.

# File System Management

Inception uses file systems to store the media files contained in Inception media sources. You can define file systems to store media files on a local disk or a network accessible file share. After you define a file system, you can use the Media Sources tab in Inception or Streamline to associate a file system with a media source.

## **For More Information on...**

- associating a file system with a media source, refer to the *Inception Configuration Guide* or the *Streamline Configuration Guide*.

This chapter discusses the following topics:

- Add a File System
- Edit a File System
- Delete a File System

## Add a File System

When you add a file system, you name the file system and select the location to store media source media files.

### To add a file system

1. Use one of the following methods to open the **Ross Cloud Gateway** web page:

- On the Desktop, double-click the **Ross Cloud Gateway** icon.
- Use the **Start** menu to select **All Programs > Ross Cloud Gateway > Ross Cloud Gateway**.


The **Cloud Gateway Login** screen opens. If the **Cloud Gateway Login** screen does not open, please contact Ross Video Technical Support.

2. At the **Cloud Gateway Login** screen, enter the following user name and password in the provided boxes:


- **Username** — root
- **Password** — password

3. Click **Login**.

You are logged into the Ross Cloud Gateway.

4. On the main toolbar, click the  **Configuration** icon.

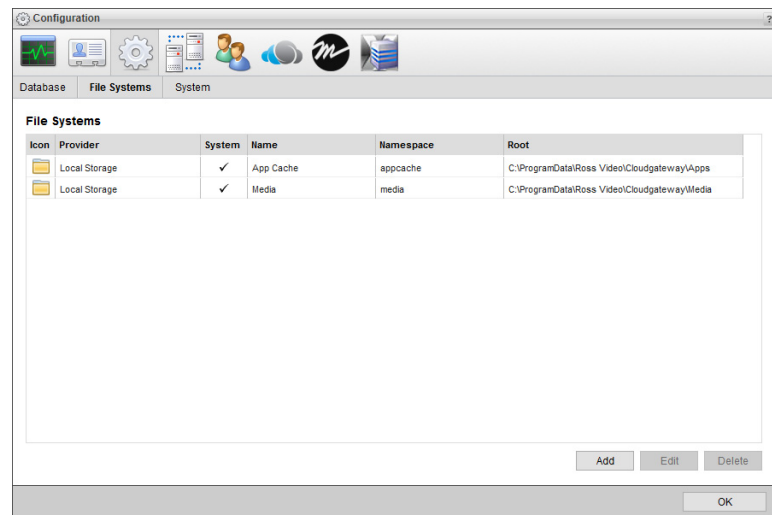
The **Configuration** window opens.

5. On the **Configuration** window toolbar, click the  **System** icon.

The **System** panel opens.

6. Click the **File Systems** tab.

The **File Systems** tab opens.



7. Click **Add**.

The **Create File System** settings open.

8. Use the **Provider** list to select the type of file system to add:

- **FTP** — a directory on an FTP server.
- **Grass Valley Stratus** — use Grass Valley Stratus Media Asset Management as a file system.
- **Local Storage** — a directory on your Cloud Gateway Server local disk or a network accessible file share.

9. Click **Next**.

The **Create File System** settings open for the selected **Provider**.

10. Use the steps for the selected **Provider** to define the file system.

#### **FTP**

- a. In the **Namespace** box, enter the name that Ross Cloud Gateway uses to access the file system.  
Once you create a file system, you cannot change the **Namespace** set for the file system.
- b. In the **Name** box, enter a name for the file system.
- c. In the **Host** box, enter in this box the hostname or IP address of the FTP server.
- d. In the **Port** box, enter in this box the port number that the FTP server uses to communicate with your Ross Cloud Gateway Server.
- e. In the **Username** box, enter in this box the username for the FTP account that Ross Cloud Gateway uses to access the FTP server.
- f. In the **Password** box, enter in this box the password for the FTP account.
- g. In the **Root** box, enter in this box the path to the directory on the FTP server to open upon initial connection.
- h. Select the **Enable Direct Access** check box to allow external devices to directly access files on this file system via a network share. When you select this option, you must also create a public network share that maps to the file system root directory.

#### **Grass Valley Stratus**

- a. In the **Name** box, enter a name for the file system.
- b. In the **Namespace** box, enter the name that Ross Cloud Gateway uses to access the file system.  
Once you create a file system, you cannot change the **Namespace** set for the file system.
- c. In the **Host** box, enter in this box the hostname or IP address of your Grass Valley Stratus system.
- d. In the **Username** box, enter in this box the username for the Grass Valley Stratus account that Ross Cloud Gateway uses to access your Grass Valley Stratus system.
- e. In the **Password** box, enter in this box the password for the Grass Valley Stratus account.
- f. In the **Root** box, enter in this box the path to the directory on your Grass Valley Stratus system to open upon initial connection.
- g. Select the **Preserve File References** check box to preserve original references to files in the MAM, even when files move. For example: when an asset moves to a new location in the MAM, Ross Cloud Gateway maintains the file reference in the new location as not to break the link.
- h. Select the **Enable MOS Object Source** check box to enable the file system to be configured as a source for MOS objects.

#### **Local Storage**

- a. In the **Name** box, enter a name for the file system.
- b. In the **Namespace** box, enter the name that Ross Cloud Gateway uses to access the file system.  
Once you create a file system, you cannot change the **Namespace** set for the file system.
- c. In the **Root** box, enter the directory path for the file system root directory on your Ross Cloud Gateway Server local disk or a network accessible file share.
- d. Select the **Preserve File References** check box to preserve original references to files in the MAM, even when files move. For example: when an asset moves to a new location in the MAM, Ross Cloud Gateway maintains the file reference in the new location as not to break the link.

11. Click **Create**.

Ross Cloud Gateway adds the new file system to the **File Systems** list.


### For More Information on...

- media sources, refer to the *Inception Configuration Guide* or the *Streamline Configuration Guide*
- how to edit file systems, refer to the section “**Edit a File System**” on page 6–4
- how to delete file systems, refer to the section “**Delete a File System**” on page 6–4

## Edit a File System

★ You cannot edit the Namespace of an existing file system.

### To edit a file system

1. On the **Configuration** window toolbar, click the  **System** icon.  
The **System** panel opens.
2. Click the **File Systems** tab.  
The **File Systems** tab opens, listing all the available file systems.
3. From the **File Systems** list, select the file system to edit.
4. Click **Edit**.  
The **Create File System** settings open.
5. Use the **Provider** list to select a file system type for the selected file system:
6. Click **Next**.  
The **Edit File System** settings open for the selected **Provider**.
7. Edit the file system settings as required.
8. Click **Save**.


### For More Information on...

- how to create file systems, refer to the section “**Add a File System**” on page 6–2
- how to delete file systems, refer to the section “**Delete a File System**” on page 6–4

## Delete a File System

Deleting a file system disconnects it from associated media sources but does not delete the media files contained in the file system root directory.

### To delete a file system

1. On the **Configuration** window toolbar, click the  **System** icon.  
The **System** panel opens.
2. Click the **File Systems** tab.  
The **File Systems** tab opens, listing all the available file systems.
3. From the **File Systems** list, select the file system to delete.
4. Click **Delete**.  
A confirmation dialog box opens.
5. Click **OK**.  
Ross Cloud Gateway deletes the selected file system.

**For More Information on...**

- how to create file systems, refer to the section “**Add a File System**” on page 6–2
- how to edit file systems, refer to the section “**Edit a File System**” on page 6–4



# Configuring DataLinq™ Server Connections

DataLinq Servers aggregate external data from XML files, RSS feeds, SMS servers, text files, or ODBC data sources and formats the output. Creating a connection to a DataLinq Server enables Inception users access DataLinq Server output. An Inception Cloud Service can only connect to DataLinq Servers on a Ross Cloud Gateway.

This chapter discusses the following topics:

- Add a DataLinq Server
- Enable or Disable a DataLinq Server
- Manage DataLinq Servers

## Add a DataLinq Server

The DataLinq Server software runs on Ross XPression systems or on other computer systems to gather data from external sources. Before you add a DataLinq Server connection to your Ross Cloud Gateway, you will need the hostname or IP address of the DataLinq Server computer and the port number that it uses to output data.

### To add a new DataLinq Server to a Ross Cloud Gateway

1. Use one of the following methods to open the **Ross Cloud Gateway** web page:

- On the Desktop, double-click the **Ross Cloud Gateway** icon.
- Use the **Start** menu to select **All Programs > Ross Cloud Gateway > Ross Cloud Gateway**.


The **Cloud Gateway Login** screen opens. If the **Cloud Gateway Login** screen does not open, please contact Ross Video Technical Support.

2. At the **Cloud Gateway Login** screen, enter the following user name and password in the provided boxes:


- **Username** — root
- **Password** — password

3. Click **Login**.

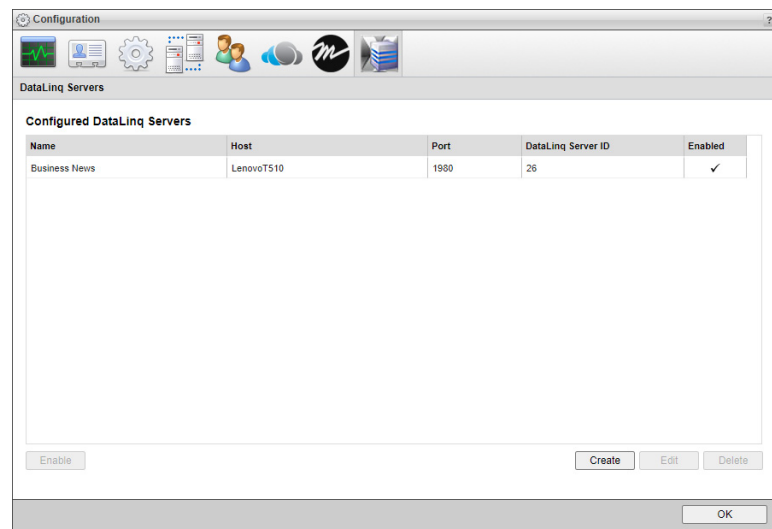
You are logged into the Ross Cloud Gateway.

4. On the main toolbar, click the  **Configuration** icon.

The **Configuration** window opens.

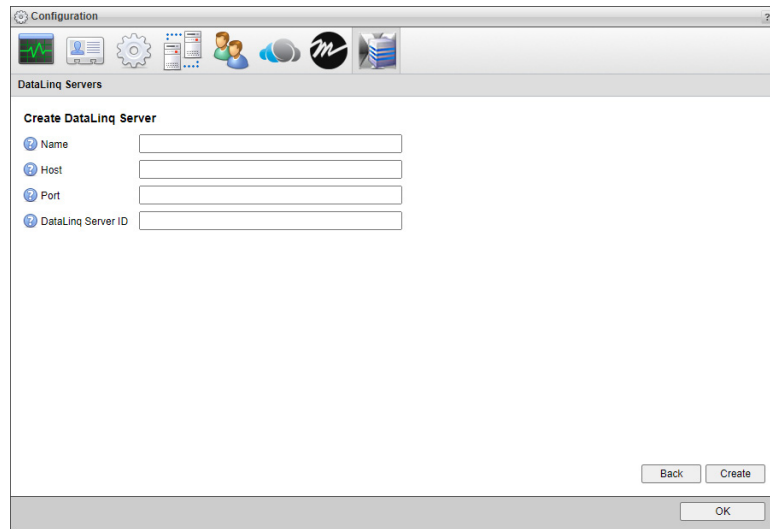
5. On the **Configuration** window toolbar, click the  **DataLinq** icon.

The **DataLinq Servers** tab opens.



6. Click **Create**.

The **Create DataLinq Server** page opens.




7. In the **Name** box, enter a name for the DataLinq Server.
8. In the **Host** box, enter the hostname or IP address of the DataLinq Server.
9. In the **Port** box, enter the port number that the DataLinq Server uses to communicate with your Ross Cloud Gateway Server.
10. In the **DataLinq Server ID** box, enter a unique identifier for the DataLinq Server.  
Inception Cloud Services will use the set **DataLinq Server ID** to connect to this DataLinq Server.
11. Click **Save**.

The Ross Cloud Gateway adds the new DataLinq Server to the **Configured DataLinq Servers** list.

## Enable or Disable a DataLinq Server


The Ross Cloud Gateway automatically enables all new DataLinq Servers that you add, and makes them available to users. When you do not want users to access information from a DataLinq Server, you can disable the server to make it unavailable to users.

### To disable a DataLinq Server

1. On the **Configuration** window toolbar, click the  **DataLinq** icon.  
The **DataLinq Servers** tab opens.
2. In the **Configured DataLinq Servers** list, select the DataLinq Server to disable.
3. Click **Disable**.

The Ross Cloud Gateway removes the check mark from the **Enabled** column of selected DataLinq Server.

### To enable a DataLinq Server

1. On the **Configuration** window toolbar, click the  **DataLinq** icon.  
The **DataLinq Servers** tab opens.
2. In the **Configured DataLinq Servers** list, select the disabled DataLinq Server to enable.
3. Click **Enable**.

The Ross Cloud Gateway adds a check mark to the **Enabled** column of selected DataLinq Server.


## Manage DataLinq Servers

You can manage configured DataLinq Servers by either editing server settings or deleting the server from your Ross Cloud Gateway.

### Edit a DataLinq Server

You can edit the name, host, and port of configured DataLinq Servers.


#### To edit a DataLinq Server

1. On the **Configuration** window toolbar, click the  **DataLinq** icon.  
The **DataLinq Servers** tab opens.
2. In the **Configured DataLinq Servers** list, select the **DataLinq Server** to edit.
3. Click **Edit**.  
The **Edit DataLinq Server** page opens.
4. Edit settings on the **Edit DataLinq Server** page as required.
5. After completing the required DataLinq Server setting edits, click **Save**.

### Delete a DataLinq Server

When you no longer require to access to data from a DataLinq Server, you can delete the DataLinq Server.

#### To delete a DataLinq Server

1. On the **Configuration** window toolbar, click the  **DataLinq** icon.  
The **DataLinq Servers** tab opens.
2. In the **Configured DataLinq Servers** list, select the **DataLinq Server** to delete.
3. Click **Delete**.  
A confirmation message opens, asking whether you want to delete the selected DataLinq Server. To keep a DataLinq Server, click **Cancel**.
4. In the confirmation message, click **OK**.  
The Ross Cloud Gateway deletes the selected DataLinq Server from the **Configured DataLinq Servers** list.
5. Click **OK** to close the **Configuration** window.