



Sony Camera Control Panel User Guide

Version 1.0.3

Thank you for choosing Ross

You've made a great choice. We expect you will be very happy with your purchase of Ross Technology.

Our mission is to:

1. Provide a Superior Customer Experience
 - offer the best product quality and support
2. Make Cool Practical Technology
 - develop great products that customers love

Ross has become well known for the Ross Video Code of Ethics. It guides our interactions and empowers our employees. I hope you enjoy reading it below.

If anything at all with your Ross experience does not live up to your expectations be sure to reach out to us at solutions@rossvideo.com.



David Ross
CEO, Ross Video
dross@rossvideo.com

Ross Video Code of Ethics

Any company is the sum total of the people that make things happen. At Ross, our employees are a special group. Our employees truly care about doing a great job and delivering a high quality customer experience every day. This code of ethics hangs on the wall of all Ross Video locations to guide our behavior:

1. We will always act in our customers' best interest.
2. We will do our best to understand our customers' requirements.
3. We will not ship crap.
4. We will be great to work with.
5. We will do something extra for our customers, as an apology, when something big goes wrong and it's our fault.
6. We will keep our promises.
7. We will treat the competition with respect.
8. We will cooperate with and help other friendly companies.
9. We will go above and beyond in times of crisis. *If there's no one to authorize the required action in times of company or customer crisis - do what you know in your heart is right. (You may rent helicopters if necessary.)*

Sony Camera Control Panel User Guide

- Ross Part Number: **4501DR-001-1.0**
- Release Date: December 8, 2014.
- Software Issue: **1.0.3**

The information contained in this Guide is subject to change without notice or obligation.

Copyright

© 2014 Ross Video Limited. Ross® and any related marks are trademarks or registered trademarks of Ross Video Limited. All other trademarks are the property of their respective companies. PATENTS ISSUED and PENDING. All rights reserved. No part of this publication may be reproduced, stored in a retrieval system, or transmitted in any form or by any means, mechanical, photocopying, recording, or otherwise, without the prior written permission of Ross Video. While every precaution has been taken in the preparation of this document, Ross Video assumes no responsibility for errors or omissions. Neither is any liability assumed for damages resulting from the use of the information contained herein.

Patents

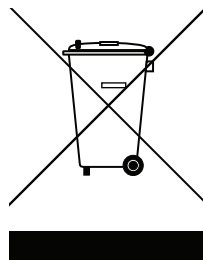
Ross Video products are protected by patent numbers US 7,034,886; US 7,508,455; US 7,602,446; US 7,802,802 B2; US 7,834,886; US 7,914,332; US 8,307,284; US 8,407,374 B2; US 8,499,019 B2; US 8,519,949 B2; US 8,743,292 B2; GB 2,419,119 B; GB 2,447,380 B. Other patents pending.

Environmental Information

The equipment that you purchased required the extraction and use of natural resources for its production. It may contain hazardous substances that could impact health and the environment.

To avoid the potential release of those substances into the environment and to diminish the need for the extraction of natural resources, Ross Video encourages you to use the appropriate take-back systems. These systems will reuse or recycle most of the materials from your end-of-life equipment in an environmentally friendly and health conscious manner.

The crossed-out wheeled bin symbol invites you to use these systems.



If you need more information on the collection, reuse, and recycling systems, please contact your local or regional waste administration.

You can also contact Ross Video for more information on the environmental performances of our products.

Company Address



Ross Video Limited

8 John Street
Iroquois, Ontario
Canada, K0E 1K0

Ross Video Incorporated

P.O. Box 880
Ogdensburg, New York
USA 13669-0880

General Business Office: (+1) 613 • 652 • 4886

Fax: (+1) 613 • 652 • 4425

Technical Support: (+1) 613 • 652 • 4886

After Hours Emergency: (+1) 613 • 349 • 0006

E-mail (Technical Support): techsupport@rossvideo.com

E-mail (General Information): solutions@rossvideo.com

Website: <http://www.rossvideo.com>

Contents

Introduction	1
Overview	1-1
Documentation Conventions	1-1
Interface Elements	1-1
Touch-Screen Support	1-1
User Entered Text	1-1
Referenced Guides	1-1
Menu Sequences	1-1
Important Instructions	1-1
Contacting Technical Support	1-2
The Sony Control Panel	2
Installing the Camera Control Panel Files	2-1
Launching the Camera Control Panel	2-1
Configuring Cameras	2-2
Controlling Cameras	2-2
User Interface Reference	2-4
Camera Configuration Window	2-4
Camera Control Window	2-7

Introduction

This chapter contains the following sections:

- “**Overview**” on page 1–1
- “**Documentation Conventions**” on page 1–1
- “**Contacting Technical Support**” on page 1–2

Overview

This guide describes how to use the Sony camera control panel to configure and control selected Sony robotic cameras.

Documentation Conventions

Special text formats are used in this guide to identify parts of the user interface, text that a user must enter, or a sequence of menus and submenus that must be followed to reach a particular command.

Interface Elements

Bold text is used to identify a user interface element such as a dialog box, menu item, or button. For example:

In the **Media Manager Client**, tap **Channel 1** in the **Channels** section.

Touch-Screen Support

This guide assumes you are using a touch-screen. The guide includes instructions to tap user interface elements. If you are using a mouse instead of a touch screen, click the mouse instead of tapping.

User Entered Text

Courier text is used to identify text that a user must enter. For example:

In the **File Name** box, enter `Channel01.property`.

Referenced Guides

Italic text is used to identify the titles of referenced guides, manuals, or documents. For example:

DashBoard Server and User Rights Management User's Guide

Menu Sequences

Menu arrows are used in procedures to identify a sequence of menu items that you must follow. For example, if a step reads “**Server > Save As,**” you would tap the **Server** menu and then tap **Save As**.

Important Instructions

Star icons are used to identify important instructions or features. For example:

- ★ Contact your I.T. Department if you experience communication issues with DashBoard and are running anti-virus software.

Contacting Technical Support

At Ross Video, we take pride in the quality of our products, but if problems occur, help is as close as the nearest telephone.

Our 24-hour Hot Line service ensures you have access to technical expertise around the clock. After-sales service and technical support is provided directly by Ross Video personnel. During business hours (Eastern Time), technical support personnel are available by telephone. After hours and on weekends, a direct emergency technical support phone line is available. If the technical support person who is on call does not answer this line immediately, a voice message can be left and the call will be returned shortly. This team of highly trained staff is available to react to any problem and to do whatever is necessary to ensure customer satisfaction.

- **Technical Support:** (+1) 613-652-4886
- **After Hours Emergency:** (+1) 613-349-0006
- **E-mail:** techsupport@rossvideo.com
- **Website:** <http://www.rossvideo.com>

The Sony Control Panel

The Sony control panel is a DashBoard panel that enables you to configure and control up to ten Sony robotic cameras. You can control cameras manually, store and recall shots, and adjust shading controls.

This document describes the Sony camera control panel and how to use it. The following topics are included:

- “**Installing the Camera Control Panel Files**” on page 2–1
- “**Launching the Camera Control Panel**” on page 2–1
- “**Configuring Cameras**” on page 2–2
- “**Controlling Cameras**” on page 2–2
- “**User Interface Reference**” on page 2–4

Installing the Camera Control Panel Files

The camera control panel is a DashBoard panel. DashBoard must be installed to run the camera control panel. DashBoard is available as a free download from www.rossvideo.com.

To install the camera control panel:

1. Ensure that DashBoard is installed.
2. Open the camera control panel zip file and then extract the **Sony** folder into the **C:** directory.

Launching the Camera Control Panel

Add the camera control panel to the DashBoard File Navigator, to make it readily available from DashBoard.

To add the camera control panel to DashBoard File Navigator:

1. Start DashBoard.
2. From the **Views** menu, tap **File Navigator**.
3. On the **File Navigator** tab, tap the green + symbol.
The **Browse for Folder** dialog appears.
4. Navigate to the **Sony BRC-900** folder located in **Computer > OS (C)**, and then tap **OK**.
5. In the **File Navigator** tree, expand the **Sony BRC-900** folder to show the **SonyCamera.grid** file.
6. To open the camera control panel anytime, double-tap the **SonyCamera.grid** file.

The camera control panel will always be available from the DashBoard File Navigator.

Configuring Cameras

This section describes how to configure cameras.

For more detailed information about specific configuration settings, see “**Camera Configuration Window**” on page 2–4.

To configure a camera:

1. In the camera control panel, tap the **Config** button.
2. On the **Cameras** tab, specify names and IP addresses for the cameras.
3. On the **Preset Names** tab, name the presets (shots) for each camera.

Tip: Within the **Preset Names** tab there is a tab for each camera.

Controlling Cameras

This section summarizes how to manually control cameras, and how to store and recall shots.

For more detailed information about specific controls, see “**Camera Control Window**” on page 2–7.

Tip: This section describes how to use the camera control panel to move cameras. If your system includes a control console (joystick), you can use the joystick to move cameras and use the camera control panel to store and recall shots.

To control a camera:

1. In the camera control panel, tap the **Controls** button.
2. Tap a camera button to control that camera.

Tip: The ten camera buttons are in a row along the top of the window.

3. If you want to move the camera, tap the **PTZ Controls** button, and then adjust the following as required:
 - **Pan and Tilt** — Tap the **Positioner** button to choose between **PAN / TILT** sliders or the pan/tilt positioner, and then move the camera.
 - **Zoom** — Tap and drag the **ZOOM** slider handle to adjust the zoom.
 - **Focus** — Tap and drag the **FOCUS** slider handle to adjust the focus.

Note: You cannot adjust the focus if **Auto Focus** is **ON**. Unfortunately, the Auto Focus status may be shown incorrectly because Sony cameras cannot communicate their focus status to DashBoard panels. Before you adjust the focus, tap the **Auto Focus** button at least once until the button says **Auto Focus OFF**.
 - **Iris** — Tap and drag the **IRIS** slider handle to adjust the iris.

Note: You cannot adjust the iris if **Auto Iris** is **ON**. Unfortunately, the Auto Iris status and iris value may be shown incorrectly because Sony cameras cannot communicate their iris status to DashBoard panels. Before you adjust the iris, tap the **Auto Iris** button at least once until the button says **Auto Iris OFF**.
4. If you want to adjust camera shading and other selected controls, tap the **Controls** button, then tap the **Shading Controls** button, and then adjust the following as required:
 - **Exposure** — Select an exposure mode:
 - › **Full Auto** enables automatic exposure.
 - › **Manual** enables you to manually set the **Shutter Speed** and **Gain**.
 - › **Shutter Priority** enables you to manually set the **Shutter Speed**, but not the **Gain**.
 - › **Iris Priority** enables the iris to determine exposure.
 - **Shutter Speed** — Select a shutter speed.

Tip: Shutter Speed is available only if **Exposure** is set to **Manual** or **Shutter Priority**.
 - **Gain** — Specify a gain value (-3, or 0 to 30).

Tip: Gain is available only if **Exposure** is set to **Manual**.

- **White Balance** — Select a white balance option:
 - › **Auto** enables automatic white balance.
 - › **Indoor** sets white balance levels for typical indoor shooting conditions.
 - › **Outdoor** sets white balance levels for typical outdoor shooting conditions.
 - › **One Push** enables you to perform a white balance operation on demand, using the **One Push** button.
 - › **Manual** enables manual white balance.
- **One Push WB** — Performs a white balance operation if **White Balance** is set to **Auto** or to **One Push**.

Note: When you store a shot, shading controls are saved as part of the shot.

5. If you want to turn the camera **ON** or **OFF**, tap the **Power** button until it shows the desired state (**Power ON** or **Power OFF**).
6. Tap the **Store/Recall Shots** button.
7. If you want to store a shot, select a camera, set the camera position and shading controls as required, tap the **Store/Recall Shots** button, and tap the **Store Shot** button, and then tap a **Shot** button to save the shot.

Tip: If you want to store a shot higher than 100, use the Shot Selection keypad to specify the shot number, instead of tapping a **Shot** button.
8. If you want to recall a shot, select a camera, tap the **Store/Recall Shots** button, and tap the **Recall Shot** button, and then tap a **Shot** button to recall that shot.
9. Continue creating and storing shots until all required shots exist for all cameras in your system.

User Interface Reference

This section describes the controls available in the Sony camera control panel.

The camera control panel consists of two interfaces:

- **Camera Configuration (Config) Window** — Enables you to configure camera settings such as camera names, IP addresses, and preset (shot) names. For more information, see “**Camera Configuration Window**” on page 2–4.
- **Camera Control (Controls) Window** — Enables you to operate cameras. You can move cameras, store and recall shots, and adjust shading controls. For more information, see “**Camera Control Window**” on page 2–7.

Camera Configuration Window

The camera configuration window enables you to configure camera settings such as camera names, IP addresses, and preset (shot) names.

To access the camera configuration window:

- Tap the **Config** button.

The **Config** window includes the following tabs:

- “**Cameras Tab**” on page 2–4
- “**Preset Names Tab**” on page 2–6

Cameras Tab

Figure 2.1 shows the **Cameras** tab.



Figure 2.1 Cameras Tab

The **Cameras** tab includes the following settings and buttons:

Setting or Button	Description
Camera Number	The number of the camera being controlled. This is not editable. Each row in the table represents one camera.
Camera Name	Specify a meaningful name for the camera.
Camera IP Address	Specify the IP address of the camera. Every camera must have a unique IP address.
Camera Port	Shows the computer port over which the cameras communicate. The camera port is not configurable.
Send Shot Names	Tap this button to send the names of presets (shots) to other inter-connected DashBoard panels, such as a Legislative Control System (LCS) panel. Sending the preset names enables the other panel(s) to display them. Tip: Preset names are defined on the Preset Names tab.
Reset Camera Sequence Numbers	This button resets addressing numbers on the Sony cameras, to ensure that the LCS panel has control of the cameras. The numbers can become mismatched between the camera and the LCS panel if another system takes control of one or more cameras.

Preset Names Tab

Figure 2.2 shows the **Preset Names** tab.

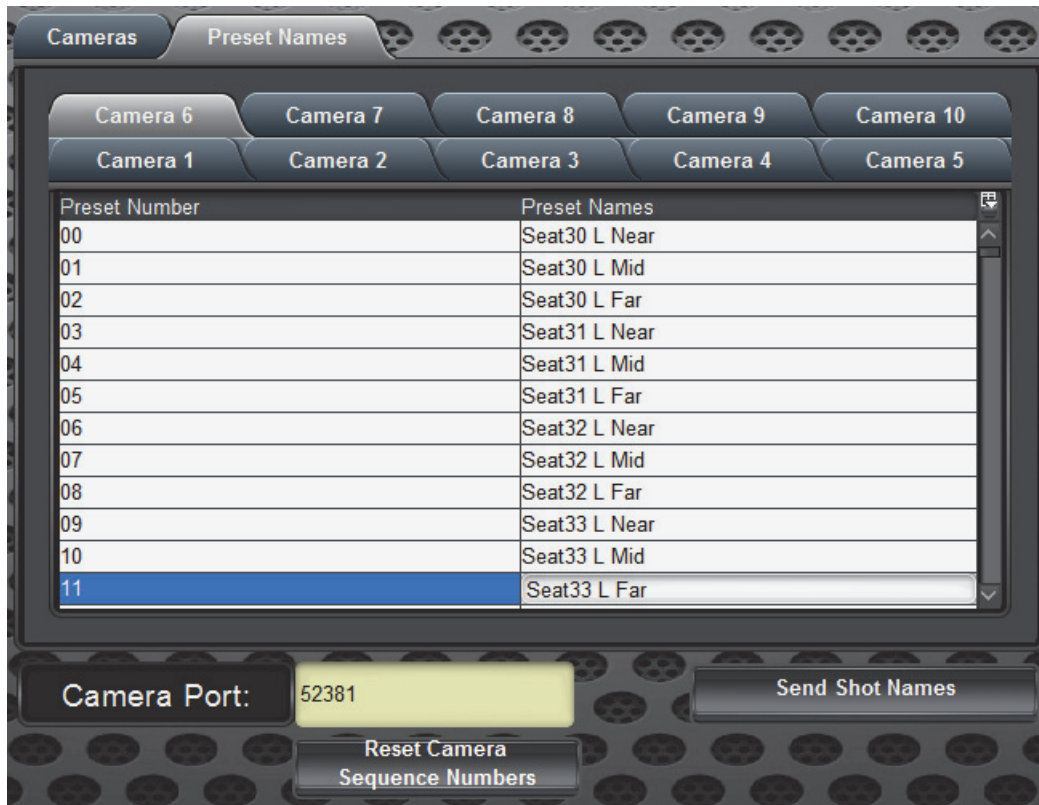


Figure 2.2 Preset Names Tab

The **Preset Names** tab includes the following settings and buttons:

Setting or Button	Description
Camera tabs	Each Camera tab corresponds to a camera in the system. Each camera has a separate list of presets. Tap a tab to set preset names for shots on a different camera.
Preset Names	Specify a meaningful name for the preset (also known as a shot). Examples of typical shot names include, “sitting”, “standing”, “close”, “far”, “tight”, and “wide”.
Camera Port	Shows the computer port over which the cameras communicate. The camera port is not configurable.
Send Shot Names	Tap this button to send the names of presets (shots) to other inter-connected DashBoard panels, such as a Legislative Control System (LCS) panel. Sending the preset names enables the other panel(s) to display them.
Reset Camera Sequence Numbers	This button resets addressing numbers on the Sony cameras, to ensure that the LCS panel has control of the cameras. The numbers can become mismatched between the camera and the LCS panel if another system takes control of one or more cameras.

Camera Control Window

The camera control window enables you to operate cameras. You can move cameras, store and recall shots, and adjust shading controls.

To access the camera control interface:

- Tap the **Controls** button.

The **Controls** interface includes the following windows:

- “**Store/Recall Shots Window**” on page 2–7
- “**PTZ Controls Window**” on page 2–8
- “**Shading Controls Window**” on page 2–11

Store/Recall Shots Window

The **Store/Recall Shots** window enables you to store camera positions as shots for future recall. It also enables you to recall those shots. The **Store/Recall Shots** window is used as an operator interface for controlling cameras during a presentation.

To access the Store/Recall Shots window:

- From the camera control interface, tap the **Store/Recall Shots** button.

Figure 2.3 shows the **Store/Recall Shots** window.

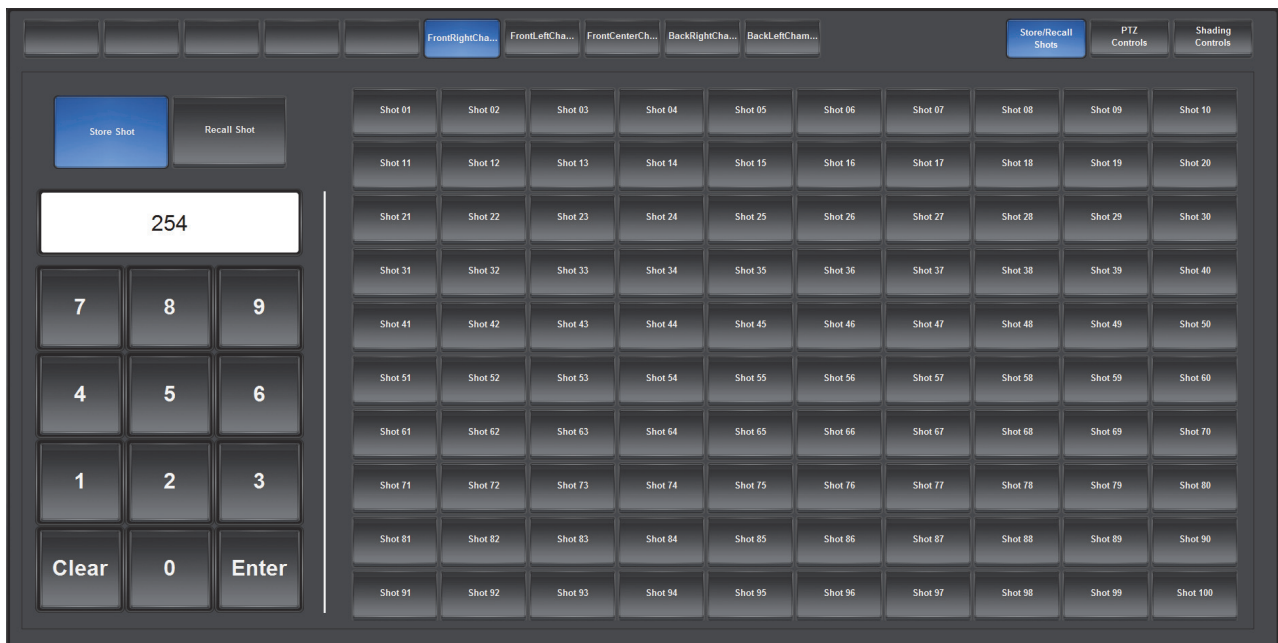


Figure 2.3 Store/Recall Shots Window

The **Store/Recall Shots** window includes the following settings and buttons:

Setting or Button	Description
Camera buttons	The row of ten buttons across the top of the Store/Recall Shots window includes one button per camera. Tap a button to select the camera to which you want to store shots, or from which you want to recall them.
Store Shot button	Tap the button to switch to Store Shot mode. In Store Shot mode, you can save the current camera position as a shot for future recall.

Setting or Button	Description
Recall Shot button	<p>Tap the button to switch to Recall Shot mode.</p> <p>In Recall Shot mode, you can recall saved shots for the current camera.</p> <p>Recall Shot mode is used for camera operation.</p>
Shot Selection keypad	<p>Type a shot number and then press the Enter button on the keypad to store or recall a shot, depending on the current mode.</p> <p>Alternatively, you can type a number in the box above the keypad and then press the Enter button on the keypad.</p> <p>Tip: The Shot buttons can also be used to select a shot for storage or recall. There are 100 Shot buttons, numbered 01 to 100. If you want to store or recall a shot higher than 100, use the Shot Selection keypad.</p>
Shot buttons	<p>Tap a Shot button to store or recall a shot, depending on the current mode.</p> <p>Shot buttons are used for camera operation.</p> <p>Tip: Be aware of the current mode (Store Shot or Recall Shot) before you tap a Shot button. If you are in Recall Shot mode and tap a Shot button, the current camera position is stored as that shot.</p> <p>Tip: Sony cameras can store up to 16 shots. The camera control panel also uses virtual shots, enabling you to store up to 1000 shots in total. The camera control panel has 100 Shot buttons, numbered 01 to 100. If you want to store or recall a shot higher than 100, use the Shot Selection keypad.</p> <p>Tip: Shots 01 to 16 are stored on the Sony cameras. The camera control panel stores only shots 17 to 999. If you want all your shots to be saved in data files, use only shots above 16.</p>

PTZ Controls Window

The **PTZ Controls** window enables you to manually adjust the position of the currently-selected camera. You can move cameras during a presentation, or move them into position to store a shot.

To access the PTZ Controls window:

- From the camera control interface, tap the **PTZ Controls** button.

Figure 2.4 shows the **PTZ Controls** window.

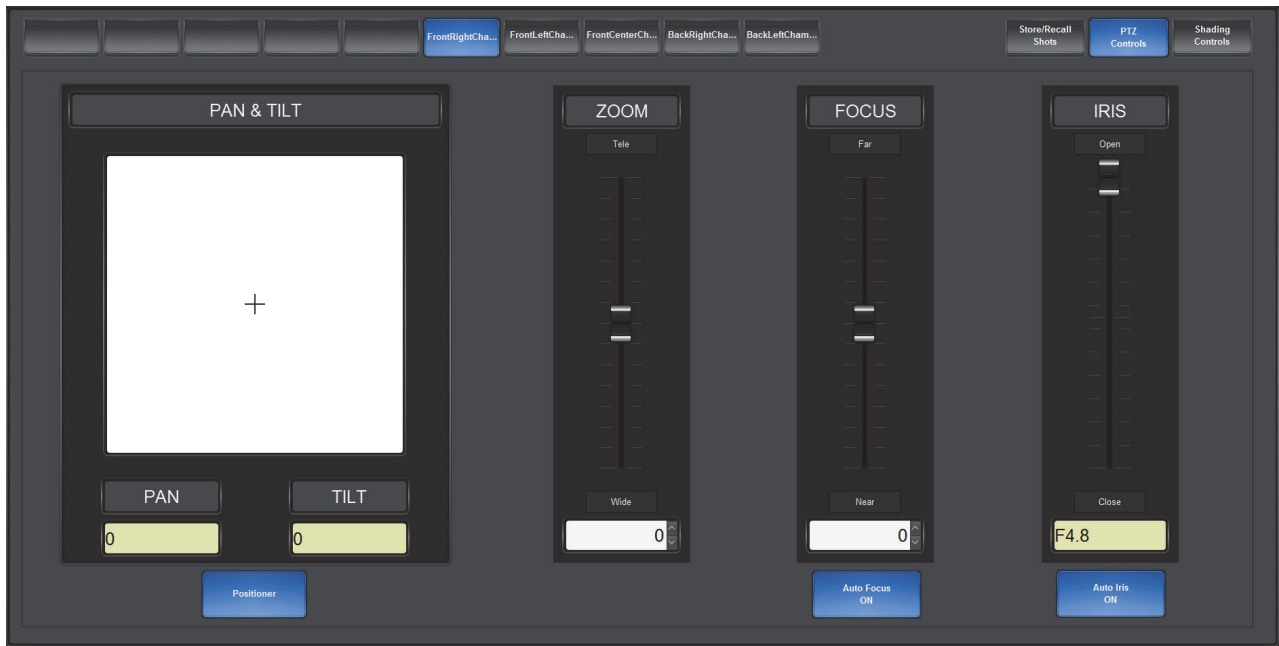


Figure 2.4 PTZ Controls Window (showing Pan/Tilt positioner)

The **PTZ Controls** window includes the following settings and buttons:

Setting or Button	Description
Camera buttons	The row of ten buttons across the top of the PTZ Controls window includes one button per camera. Tap a button to select which camera you want to move.
Positioner button	Switches between interfaces for adjusting pan and tilt positions: <ul style="list-style-type: none"> • PAN and TILT sliders — enable you to adjust pan and tilt separately. • Pan/Tilt Positioner — enables you to adjust pan and tilt simultaneously.

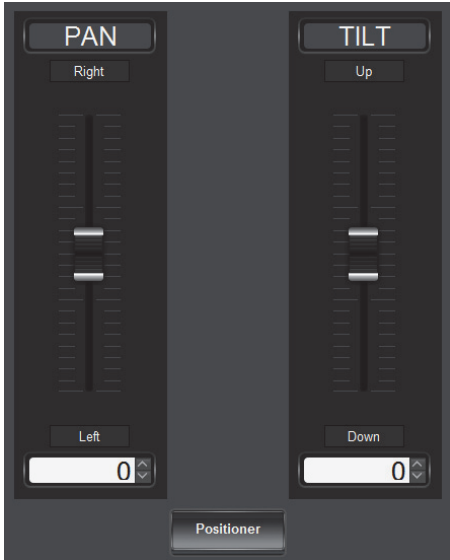
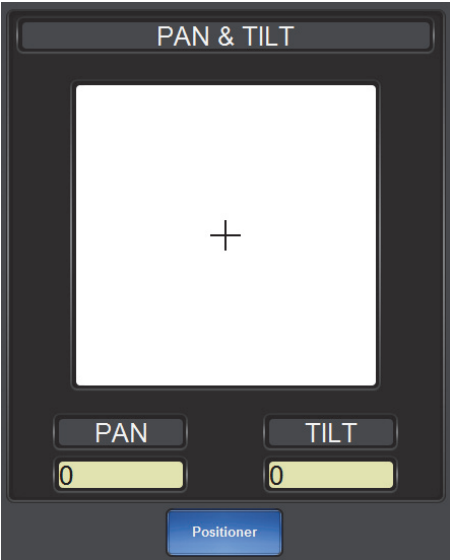



Figure 2.5 Pan/Tilt Sliders (left) and Pan/Tilt Positioner (Right)

Setting or Button	Description
PAN and TILT sliders	<p>Tap and drag the PAN or TILT slider handles to pan or tilt the camera.</p> <p>Alternatively, you can type a value in the box below the slider, or use the up/down arrows beside the box to select a value.</p> <p>The value range is -24 to 24. Higher pan values pan right. Higher tilt values tilt upwards.</p> <p>Pan and tilt slider values are relative, not absolute. When you release the slider, the value shown returns to zero.</p>
Pan/Tilt Positioner	<p>Tap and drag the cross-hairs within the white box until the camera is in the desired pan/tilt position.</p>
ZOOM slider	<p>Tap and drag the ZOOM slider handle up or down to zoom the lens.</p> <p>Alternatively, you can type a value in the box below the slider, or use the up/down arrows beside the box to select a value.</p> <p>The value range is -7 to 7. Higher values are towards telephoto, and lower values are towards wide.</p> <p>Zoom slider values are relative, not absolute. When you release the slider, the value shown returns to zero.</p>
Auto Focus button	<p>Tap to switch between automatic focus and manual focus control.</p> <p>When Auto Focus is OFF, you can adjust focus using the FOCUS slider.</p> <p>Note: The Auto Focus status may be shown incorrectly because Sony cameras cannot communicate their focus status to DashBoard panels. Whenever you want to adjust the focus or know the Auto Focus state of a camera, tap the Auto Focus button at least once, until the desired state is shown.</p>
FOCUS slider	<p>Tap and drag the FOCUS slider handle up or down to focus the lens manually.</p> <p>Alternatively, you can type a value in the box below the slider, or use the up/down arrows beside the box to select a value.</p> <p>The value range is -7 to 7. Higher values are towards far focus, and lower values are towards near focus.</p> <p>Focus slider values are relative, not absolute. When you release the slider, the value shown returns to zero.</p> <p>Note: You cannot adjust the focus if Auto Focus is ON. Unfortunately, the Auto Focus status may be shown incorrectly because Sony cameras cannot communicate their focus status to DashBoard panels. Before you adjust the focus, tap the Auto Focus button at least once until the button says Auto Focus OFF.</p>
Auto Iris button	<p>Tap to switch between automatic and manual iris control.</p> <p>When Auto Iris is OFF, you can adjust the iris using the IRIS slider.</p> <p>Note: The Auto Iris status may be shown incorrectly because Sony cameras cannot communicate their iris status to DashBoard panels. Whenever you want to adjust the iris or know the Auto Iris state of a camera, tap the Auto Iris button at least once, until the desired state is shown.</p>
Iris slider	<p>If you want to adjust the iris, tap and drag the IRIS slider handle up or down.</p> <p>Iris slider values are absolute. When you release the slider, the value you set remains.</p> <p>Note: You cannot adjust the iris if Auto Iris is ON. Unfortunately, the Auto Iris status and iris value may be shown incorrectly because Sony cameras cannot communicate their iris status to DashBoard panels. Before you adjust the iris, tap the Auto Iris button at least once until the button says Auto Iris OFF.</p>

Shading Controls Window

The **Shading Controls** window enables you to adjust selected camera controls, including shading and shutter speed. Shading settings remain until changed again. They are saved as part of the shots.

Note: For more information about the effect of these camera controls, refer to the documentation that came with your camera system.

To access the Shading Controls window:

- From the camera control interface, tap the **Shading Controls** button.

Figure 2.6 shows the **Shading Controls** window.

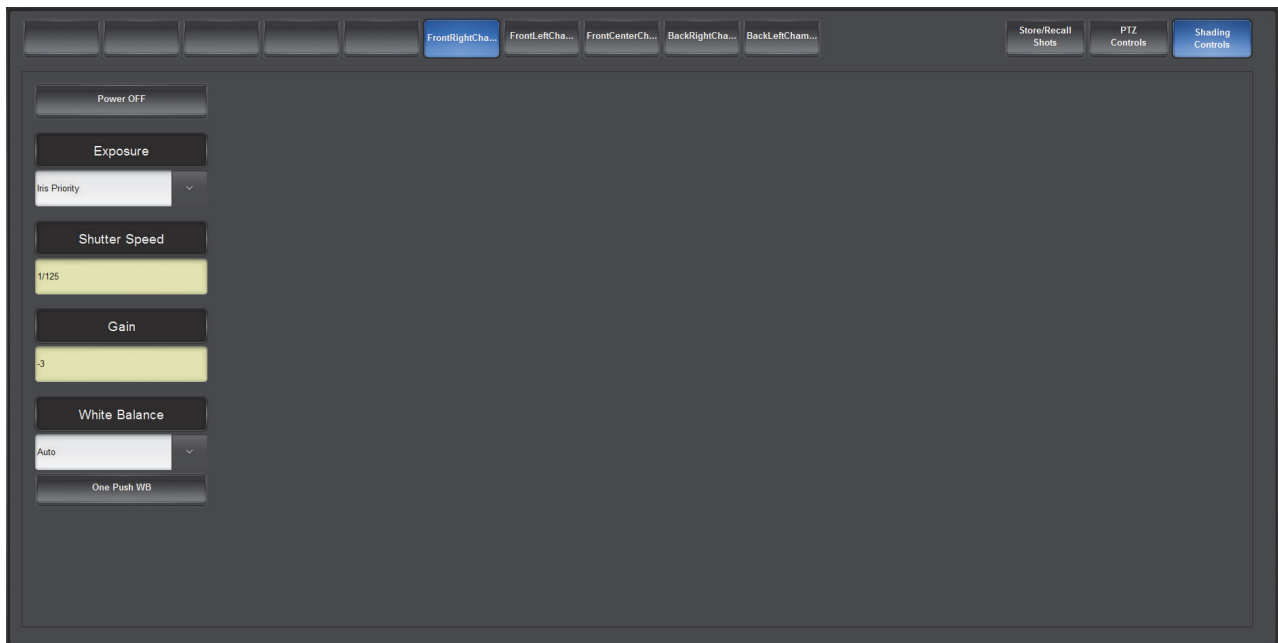


Figure 2.6 Shading Controls Window

The **Shading Controls** tab includes the following settings and buttons:

Setting or Button	Description
Camera buttons	The row of ten buttons across the top of the Shading Controls window includes one button per camera. Tap a button to select which camera you want to adjust.
Power button	Turns the camera ON or OFF . The Power button shows the current state.
Exposure	Select an exposure mode: <ul style="list-style-type: none"> • Full Auto enables automatic exposure. • Manual enables you to manually set the Shutter Speed and Gain. • Shutter Priority enables you to manually set the Shutter Speed, but not the Gain. • Iris Priority enables the iris to determine exposure. •
Shutter Speed	Select a shutter speed. Tip: Shutter Speed is available only if Exposure is set to Manual or Shutter Priority .
Gain	Specify a gain value (-3, or 0 to 30). Tip: Gain is available only if Exposure is set to Manual .

Setting or Button	Description
White Balance	<p>White Balance — Select a white balance option:</p> <ul style="list-style-type: none"> • Auto enables automatic white balance. • Indoor sets white balance levels for typical indoor shooting conditions. • Outdoor sets white balance levels for typical outdoor shooting conditions. • One Push enables you to perform a white balance operation on demand, using the One Push button. • Manual enables manual white balance.
One Push WB	Performs a white balance operation if White Balance is set to Auto or to One Push .