

PostgreSQL Automatic Backups

You can automatically backup the Inception PostgreSQL database using a combination of a backup script, a PostgreSQL user, and a scheduled task.

Backup Script

The backup script that you create for you Inception Server contains the commands to backup the Inception PostgreSQL database.

To create a PostgreSQL backup script for your Inception Server

1. Log in to the **Inception Server** computer as **Inception**.
2. Open the `C:\Program Files\PostgreSQL\9.3` folder.
3. Use a text editor to create a file named `pgbackup-<dest>.bat`, where `<dest>` identifies the backup destination. For example: `loc` to identify local backups and `net` to identify backups destined for a network share.
4. Add the following lines to the file:

```
@echo off
set PGPASSWORD=pgBackup
set BACKUP_FILE=postgresdb.backup
"C:\Program Files\PostgreSQL\9.3\bin\pg_dump" -I -h localhost -p 5432 -U pgbackup -F c
-b -v -f <path>\%BACKUP_FILE% <db>
```

The variables contained in the PostgreSQL database backup command (`pg_dump`) are as follows:

- `PGPASSWORD` — to change the password for the `pgbackup` PostgreSQL user, modify the password `pgBackup` in the line `set PGPASSWORD=pgBackup` as required.
 - `BACKUP_FILE` — to change the name of the backup file, modify the backup up filename `postgresdb.backup` in the line `set BACKUP_FILE=postgresdb.backup` as required.
 - `<path>` — this variable gets replaced by the location to store the backups and the name of the backup. The backup storage location can be a local destination (for example: `E:\backups`) or a network location (for example: `\\Storage\backups`).
 - `<db>` — this variable gets replaced by the name of the database to back up.
5. Save the file.

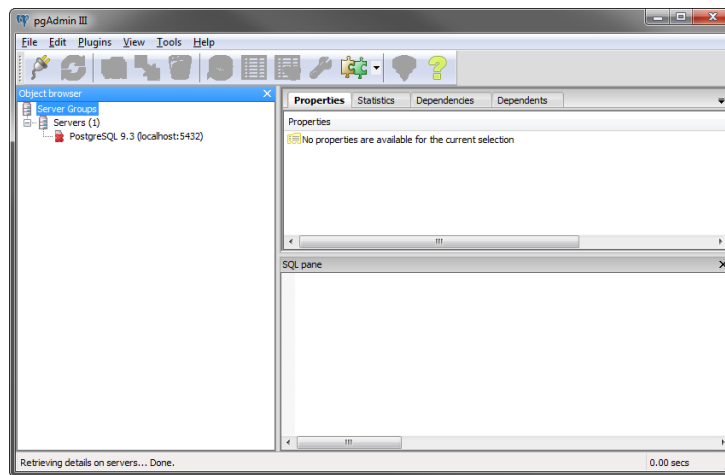
Backup User

The automatic backup procedure requires a PostgreSQL user named `pgbackup` to create a backup of the Inception PostgreSQL database.

To create the `pgbackup` PostgreSQL user to backup the Inception database

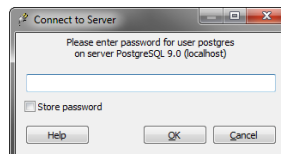
1. From the Windows Desktop, use the **Start** menu to select **All Programs > PostgreSQL 9.3 > pgAdmin III**.

The **pgAdmin III** window opens.



2. In the **Object Browser** tree view, right-click the **PostgreSQL 9.3 (localhost:5432)** server and select **Connect** from the shortcut menu.

The **Connect to Server** dialog box opens.



3. In the **Password** box, type the following password:

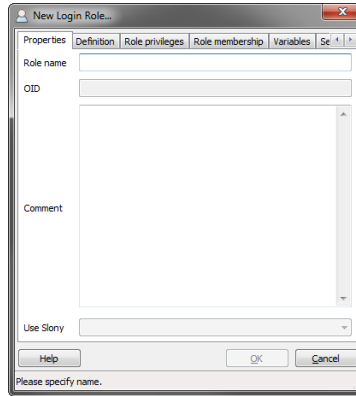
`postgres`

If the password of `postgres` did not meet the password security requirements set by your organization, enter the custom password set during installation of the Inception Server software on the Inception computer.

4. Click **OK**.

5. Right-click the **PostgreSQL 9.3 (localhost:5432)** server and select **New Object > New Login Role** from the shortcut menu.

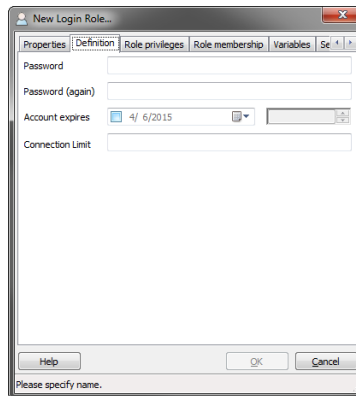
The **New Login Role** dialog box opens.



6. In the **Role name** box, enter `pgbackup`.

7. Click the **Definition** tab.

The **Definition** tab opens.

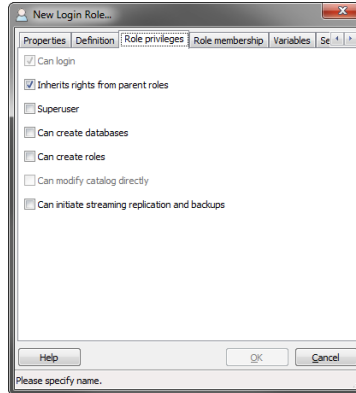


8. In the **Password** box, enter `pgBackup`.

9. In the **Password (again)** box, enter `pgBackup`.

10. Click the **Role privileges** tab.

The **Role privileges** tab opens.



11. In the **Role privileges** tab, select the following options

- **Inherits rights from parent roles**
- **Superuser**
- **Can initiate streaming replication and backups**

12. Click **OK**.

The **New Login Role** dialog box closes.

13. In the **pgAdmin III** window, use the **File** menu to select **Exit**.

The **pgAdmin III** window closes.

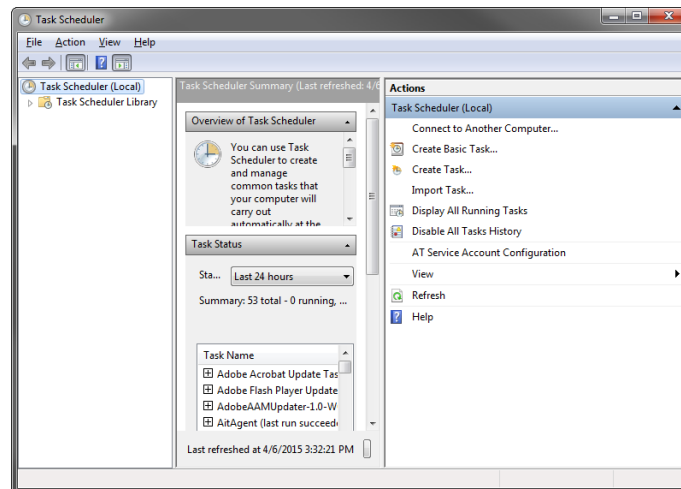
Scheduled Task

The scheduled task set the time and frequency to backup the Inception PostgreSQL database.

To create a scheduled task to backup the Inception PostgreSQL database

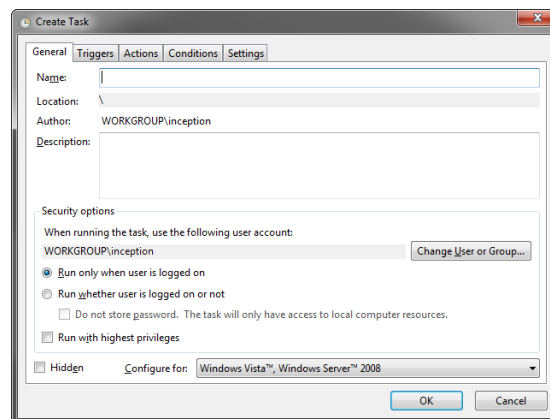
1. From the Windows Desktop, use the **Start** menu to select **All Programs > Accessories > System Tools > Task Scheduler**.

The **Task Scheduler** window opens.



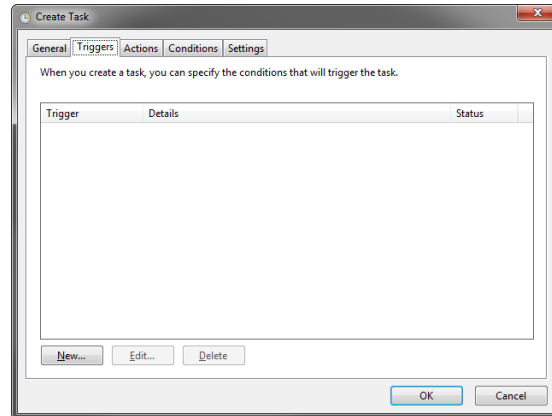
2. Use the **Actions** menu to select **Create Task**.

The **Create Task** dialog box opens.

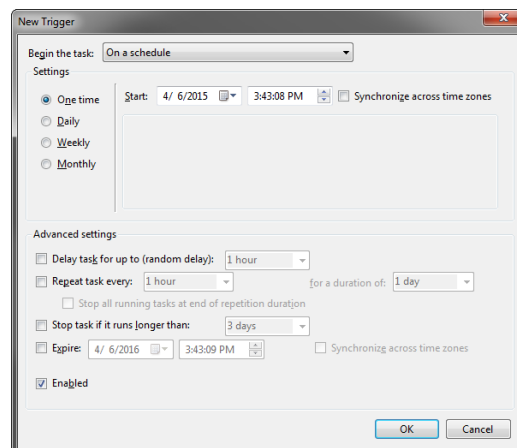


3. In the **Name** box, enter `Inception Backup`.
4. In the **Security options** section, select the **Run whether user is logged on or not** option.

5. Click the **Triggers** tab.
The **Triggers** tab opens.



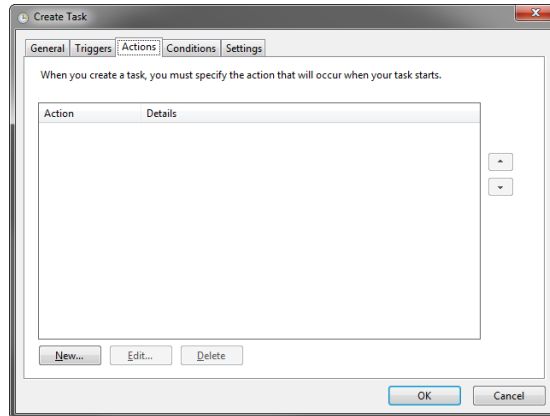
6. Click **New**.
The **New Triggers** dialog box opens.



7. In the **Settings** section, select the **Daily** option.
8. Use the **Start** boxes to set the date and time for the first automatic backup of the Inception PostgreSQL database.
9. In the **Recur every** box, enter the number of days for the recurrence interval.
10. Click **OK**.
The **New Trigger** dialog box closes.

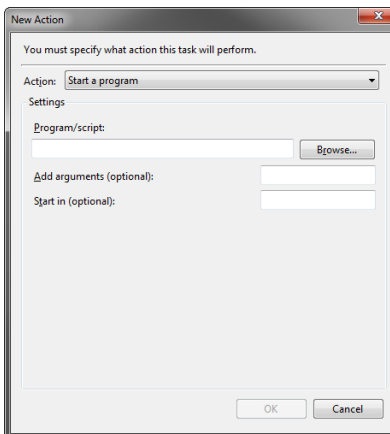
11. In the **Create Task** window, click the **Actions** tab.

The **Actions** tab opens.



12. Click **New**.

The **New Action** dialog box opens.



13. Use the **Action** list to select **Start a program**.

14. In the **Program/script** box, enter the following command:

```
C:\Windows\System32\cmd.exe
```

15. In the **Add arguments (optional)** box, enter the follow argument:

```
/c "C:\Program Files\PostgreSQL\9.3\pgbackup-<dest>.bat"
```

Where <dest> identifies the backup destination.

16. Click **OK**.

The **New Action** dialog box closes.

17. In the **Create Task** window, click **OK** to create the Inception Backup task.

18. If you want to confirm that the Inception Backup task is running, do the following:
 - a. In the **Task Scheduler** tree view, select the **Task Scheduler Library** node.
 - b. In the table to the right, locate the **Inception Backup** task.
 - c. Right-click the **Inception Backup** task and select **Run** from the shortcut menu.
19. In the **Task Scheduler** window, use the **File** menu to select **Exit**.

The **Task Scheduler** window closes.

Contacting Technical Support

Technical Support is staffed by a team of experienced specialists ready to assist you with any question or technical issue.

Ross Video has technical support specialists strategically located around the globe to ensure a prompt response to technical inquiries. Our primary technical support center is located in Ottawa, Ontario, Canada. In addition, we have offices in The United Kingdom (London), Australia (Sydney), and Singapore with satellite locations in New York City, The Netherlands, and China. As we expand our presence globally, we are constantly evaluating other key locations to have a local technical support specialist in order to better service our customers.

North America

Our North America center located in Ottawa, Ontario, Canada and is open Monday to Friday 8:30 a.m. to 6:00 p.m. EST, with 24/7/365 on-call service after hours.

Our telephone number is: +1-613-686-1557

Toll free within North America: +1 833-859-0499

EMEA

Our EMEA center is located in Buckinghamshire, England, United Kingdom and is open Monday to Friday 8:30 a.m. to 5:00 p.m. GMT. After hours support is provided by our North America location.

International toll free: +800 3540 3545

Australia

Our Sydney, Australia office is located in Alexandria, NSW.

Our local support telephone number is: 1300 007 677

If the local support specialist is not available, your call will be transferred automatically to our North America center.

Online

E-mail: techsupport@rossvideo.com

Website: use the link <https://support.rossvideo.com/> to open a support request.

Copyright

© 2012 - 2024 Ross Video Limited. Ross® and any related marks are trademarks or registered trademarks of Ross Video Limited. All other trademarks are the property of their respective companies. PATENTS ISSUED and PENDING. All rights reserved. No part of this publication may be reproduced, stored in a retrieval system, or transmitted in any form or by any means, mechanical, photocopying, recording or otherwise, without the prior written permission of Ross Video. While every precaution has been taken in the preparation of this document, Ross Video assumes no responsibility for errors or omissions. Neither is any liability assumed for damages resulting from the use of the information contained herein.