

## Creating a New Caprica VM in Hyper-V

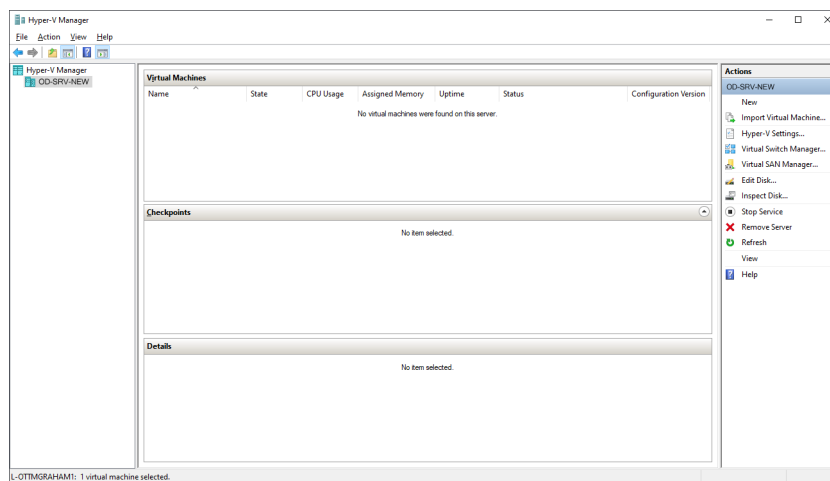
The Caprica Server in an OverDrive system runs as a virtual machine on the OverDrive Server computer. When commissioning a new OverDrive Server computer, you must create a virtual machine in Hyper-V for the Caprica Server.

### Create a New Caprica VM

The Hyper-V New Virtual Machine Wizard uses the supplied Hyper-V image file to create a new Caprica VM.

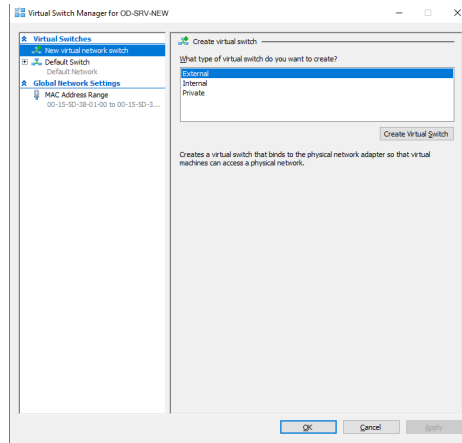
#### To create a new Caprica VM

1. Log in to the OverDrive Server computer that hosts your Caprica Server in Hyper-V as an `administrator`.
2. Use the following folder path to open the `Hyper-V` folder that contains the Caprica VM Hyper-V image file:  
`\\server\test\system archives\OverDrive`
3. From the open `Hyper-V` folder, download the `Caprica VM` folder to the following folder on the OverDrive Server computer:  
`C:\archive\`
4. Use the `View` menu to open the `Hyper-V` window.  
 The `Hyper-V` window opens.

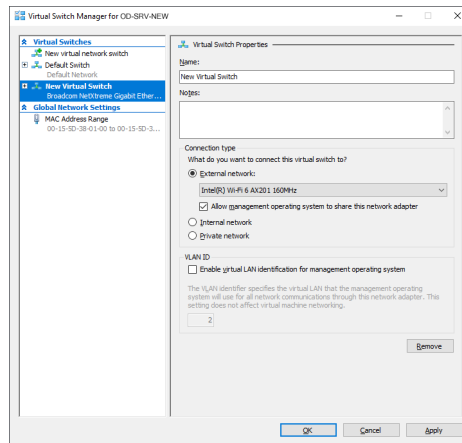


5. In the `Hyper-V` panel, select `Hyper-V`.

The **YlwxdoVz lfk P dqdjh** dialog box opens.



6. In the tree view, select **Q hz ylwxdogh wz run vz lfk**.  
The **Fuhdwh ylwxdovz lfk** panel opens.
7. In the **Z kdww|sh riy lwxdovz lfk gr |rx z dqwr fuhdwhB** section, select **H{whugdo**
8. Click **Fuhdwh YlwxdoVz lfk**.  
The **YlwxdoVz lfk Surshwhlv** panel opens for the new virtual switch.



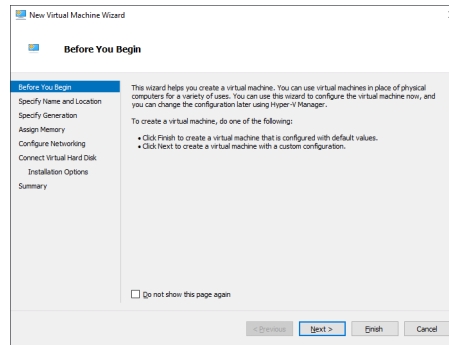
9. In the **Q dp h** box, enter **VMSwitch**.
10. Clear the **Dærz p dqdjh p hqwrshudwlqj v|vwhp wr vkduh wklv qhwz run dgdshu** check box.
11. Click **R.N**.  
The **Dssq| Q h wz runlqj Fkdqjhv alert** dialog box opens.

12. In the `Dssq Q hwz runlqj Fkdqjhv` alert, click `\hv`.

The `Dssq Q hwz runlqj Fkdqjhv` alert and the `YlwxdoVz lwfk P dqdjhu` dialog box close.

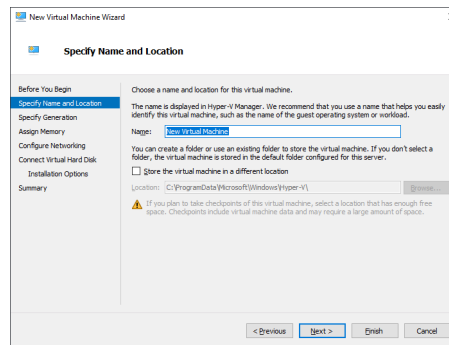
13. In the `Dfwlrqv` panel, select `Q hz A YlwxdoP dfk lqh`.

The `Q hz YlwxdoP dfk lqh Z l}duq` opens displaying the `Ehiruh \rx Ehjlq` screen.



14. Click `Q h{w`.

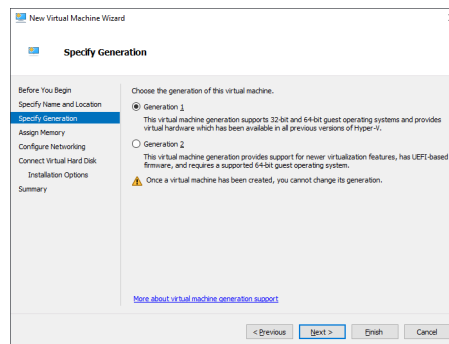
The `Vshfli| Q dp h dqg Orfdwlrq` screen opens.



15. In the `Q dp h` box, enter `CapricaVM8`.

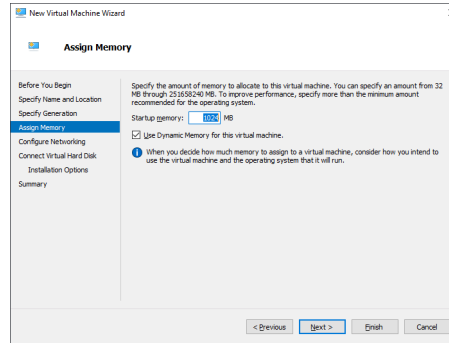
16. Click `Q h{w`.

The `Vshfli| Jhghudwlrq` screen opens.

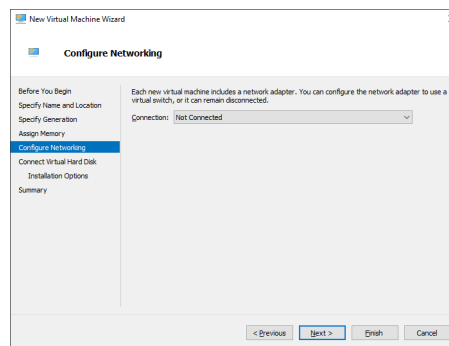


17. Select the `Jhghudwlrq 4` option.

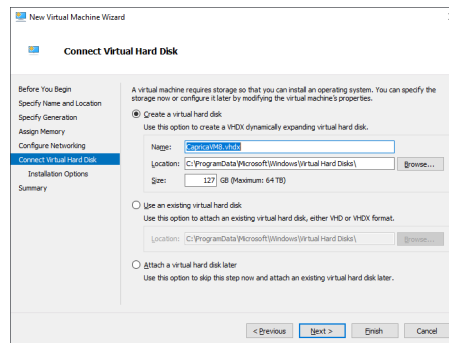
- Click **Q h {w**.  
The **Dw ljq P hp ru |** screen opens.



- In the **Vw d u x s p hp ru |** box, enter 8192.
- Click **Q h {w**.  
The **Fr q i l j x u h Q h w z r u n l q j** screen opens.

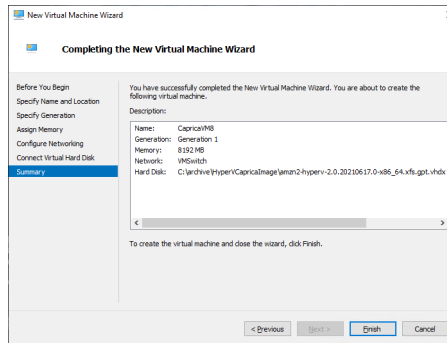


- Use the **Fr q q h f w l r q** list to select **Y P V z l w f k**.
- Click **Q h {w**.  
The **Fr q q h f w Y l w x d o k d u g G l n** screen opens.



- Select the **X v h d q h { l w l q j y l w x d o k d u g g l n** option.
- Click **E u r z v h** to the right of the **O r f d w l r q** box.  
The **R s h q** dialog box opens.

25. Navigate to the `F:\dufk\yh_K |shuYFdsulfd\p djh` folder.
26. Open the `dp }q5&k |shuy&B15354394 :B0{ ;9b971{ ivTjswlykg {` file.
27. Click `Q h{w`.  
The `Frp sdw\qj Q hz Y lwxdoP dfk lqh Z l}dug` screen opens.



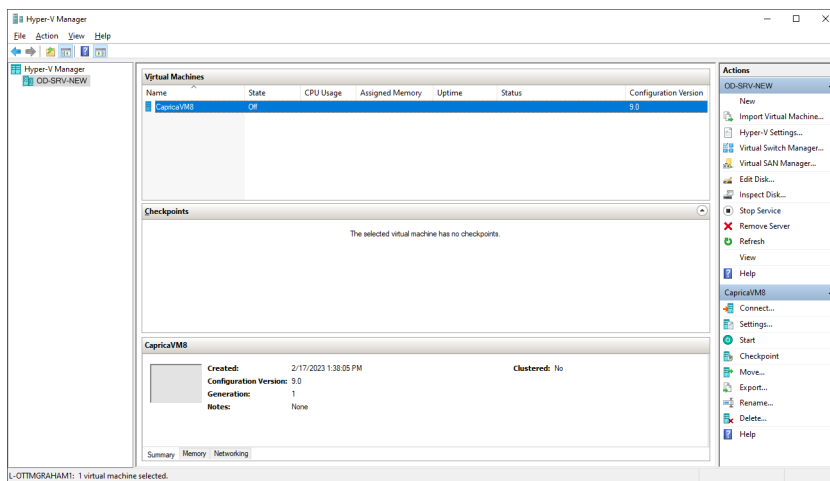
28. Click `I lq lvk`.  
The `Q hz Y lwxdoP dfk lqh Z l}dug` closes and the `K |shuOY P dqdjhu` displays the new `Fdsulfd ;YP` virtual machine in the `Y lwxdoP dfk lqh hv` section.

## Configure a New Caprica VM

After creating the Caprica VM, you must configure it to work with in your OverDrive system.

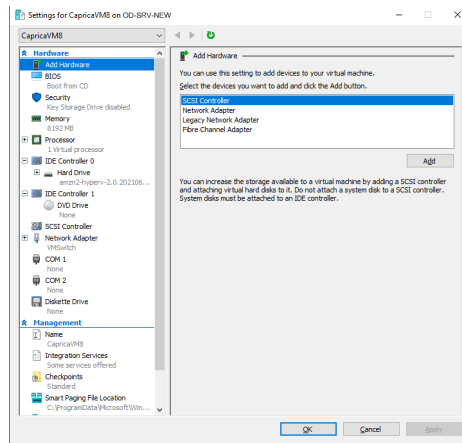
### To configure a new Caprica VM

1. In the `Y lwxdoP dfk lqh hv` section of the `K |shuOY P dqdjhu`, select `FdsulfdYP ;`.

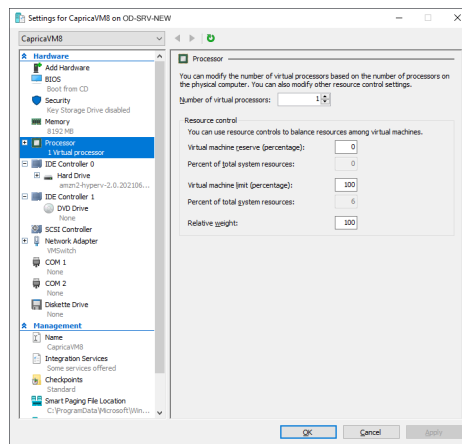


2. In the `FdsulfdYP ;` section of the `D fwlrqv` panel, select `Vhww\qj v`.

The **Hardware** dialog box opens.

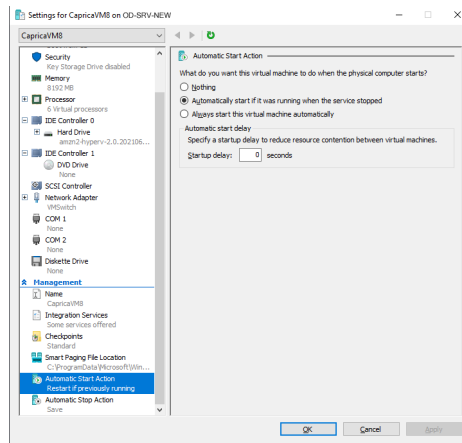


- In the **Hardware** section of the tree view, select **Processor**. The **Processor** panel opens.

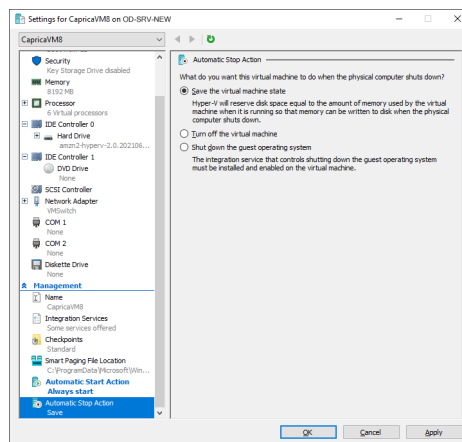


- In the **Number of virtual processors** box, enter 6.
- Click **OK**.
- In the **Processor** section of the tree view, select **Disk**.

The **Automatic Start Action** panel opens.

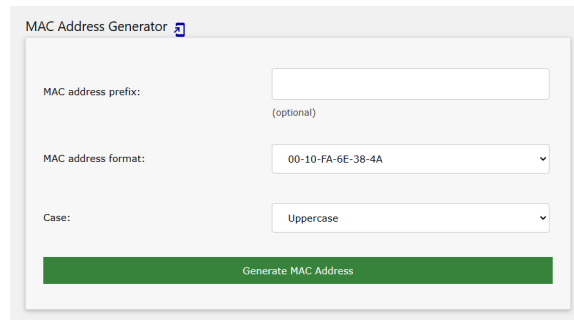


7. Select the **Always start this virtual machine automatically** option.
8. In the **Management** section of the tree view, click **Automatic Start Action**. The **Automatic Start Action** panel opens.

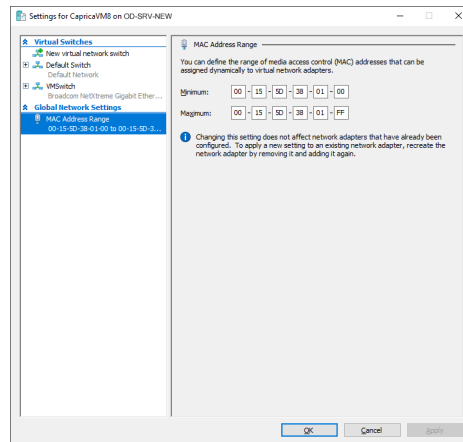


9. Select the **Shutdown the guest operation system** option.
10. Click **OK**.  
The **Save VM Configuration** dialog box closes and the **Save VM Configuration** saves the CapricaVM8 VM configuration.
11. Use the following URL to open the **miniwebtool** web site in a web browser:  
<https://miniwebtool.com/mac-address-generator/>

The pop-up window opens in a web browser.



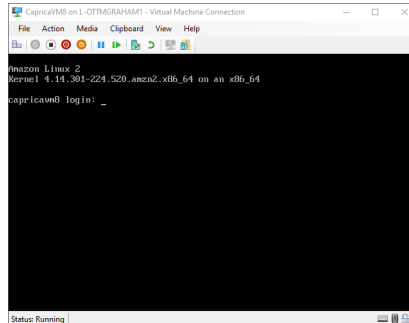
12. In the pop-up window, enter 00:15:5D.
13. Click the OK button.
14. Record the MAC address displayed in the MAC address field.
15. In the Network panel, click the Network Settings dialog box.  
The Network Settings dialog box opens.
16. In the tree view, select the Network Settings panel.  
The Network Settings panel opens.



17. In the pop-up boxes, enter the MAC address you recorded in step 47. For example:  
00 - 15 - 5D - 25 - 65 - B0
18. In the pop-up boxes, enter the MAC address you recorded in step 47 with the last two letters replaced with FF. For example:  
00 - 15 - 5D - 25 - 65 - FF
19. Click **OK**.  
The Network Settings dialog box closes and the OK button saves the set MAC address range.
20. In the Network Settings section of the OK button, right-click the VM8; and use the shortcut menu to select Start.  
The CapricaVM8 VM starts.

21. Right-click `File` ; and use the shortcut menu to select `Run`.

When your CapricaVM8 VM is properly configure, the `File` ; window opens displaying the `login` prompt.



## Contacting Technical Support

Technical Support is staffed by a team of experienced specialists ready to assist you with any question or technical issue.

Ross Video has technical support specialists strategically located around the globe to ensure a prompt response to technical inquiries. Our primary technical support center is located in Ottawa, Ontario, Canada. In addition, we have offices in The United Kingdom (London), Australia (Sydney), and Singapore with satellite locations in New York City, The Netherlands, and China. As we expand our presence globally, we are constantly evaluating other key locations to have a local technical support specialist in order to better service our customers.

### North America

Our North America center located in Ottawa, Ontario, Canada and is open Monday to Friday 8:30 a.m. to 6:00 p.m. EST, with 24/7/365 on-call service after hours.

Our telephone number is: +1-613-686-1557

Toll free within North America: +1 844-652-0645

### EMEA

Our EMEA center is open Monday to Friday 8:30 a.m. to 5:00 p.m. GMT. After hours support is provided by our North America location.

Our telephone number is: +44 (0)1189502446

International toll free: +800 3540 3545

If the local support specialist is not available, your call will be transferred automatically to our North America center.

### Australia

Our Sydney, Australia office is located in Alexandria, NSW.

Our local support telephone number is: 1300 007 677

If the local support specialist is not available, your call will be transferred automatically to our North America center.

### Online

E-mail: [whfkvxssru@capricavm8.com](mailto:whfkvxssru@capricavm8.com)

Website: open a support request using the link <https://www.rossvideo.com/support> to open a support request.

## Copyright

© 2014 - 2025 Ross Video Limited. Ross®, MLE®, OverDrive®, GlobalView®, RundownControl™, DirectControl™, DirectAudio™, DirectAUXaudio™, DirectCamera™, DirectServer™, QuickTurn™, RapidRestore™, SideShot™, SideSlide™, SideStick™, OverDrive Gateway™, LiveLink™, and any related marks are trademarks or registered trademarks of Ross Video Limited. All other trademarks are the property of their respective companies. PATENTS ISSUED and PENDING. All rights reserved. No part of this publication may be reproduced, stored in a retrieval system, or transmitted in any form or by any means, mechanical, photocopying, recording or otherwise, without the prior written permission of Ross Video. While every precaution has been taken in the preparation of this document, Ross Video assumes no responsibility for errors or omissions. Neither is any liability assumed for damages resulting from the use of the information contained herein.