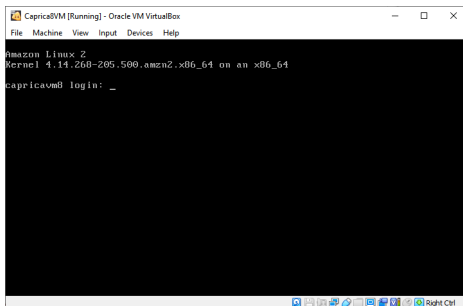


Caprica Server Static IP Address - Customer Supplied Virtual Machine

Ross Video makes Open Virtualization Appliance (.ova) files available to their customers so they can run Caprica Servers using their own virtualization software. After you start your Caprica virtual machine, you must configure a static IP address for the virtual machine.

To configure a static IP address for your Caprica virtual machine

1. Download the `Fdsulf;YP lryd` file from Ross Video Technical Support.
2. Follow the directions for your virtualization software to import the `Fdsulf;YP lryd` file and create a Caprica8VM virtual machine.
3. Start your `Fdsulf;YP` virtual machine. The login prompt displays:



4. Use the following credentials to log in to your Caprica Server as the caprica user:
 - `αjlg:caprica`
 - `Sdvz rug:<your_assword>`
 The first time you log in to your Caprica Server you must change the caprica user password.
5. At the following prompt, enter password:


```
(current) UNIX password: <your_password>
```
6. At the following prompt, enter a new password for the caprica user that satisfies the password policy of your organization:


```
New password: <your_new_password>
```
7. At the following prompt, enter the same password as you entered at the `Qhz sdvz rug` prompt:


```
Retype new password: <your_new_password>
```

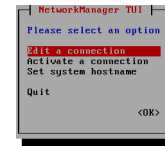
 The command prompt displays.
8. Record the new password you set for the caprica user.
9. At the command prompt, enter the following command:


```
sudo nmtui
```

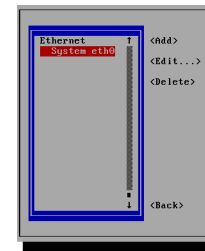
10. At the following prompt, enter the caprica user password:


```
[sudo] password for caprica:
```

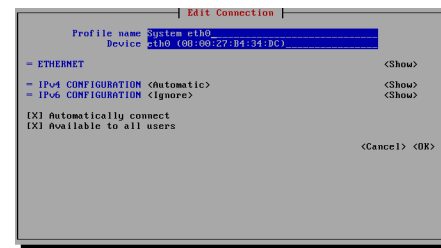
 The `Qhwz runP dqdjhuWXLdialog` box opens with the `Hglwd Frqqhfwlrq` option selected.



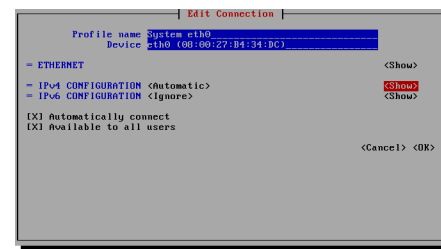
11. Press `Hqwhu`. The `Frqqhfwlrq` dialog box opens with only available Ethernet connection selected.



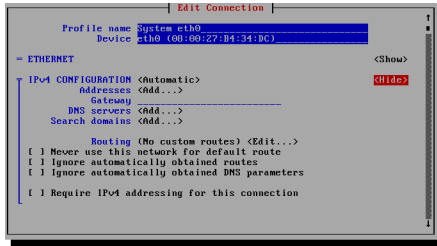
12. Use the `Uljkwarrow` key to select `?HglwllIA`.
13. Press `Hqwhu`. The `HglwFrqqhfwlrq` dialog box opens.



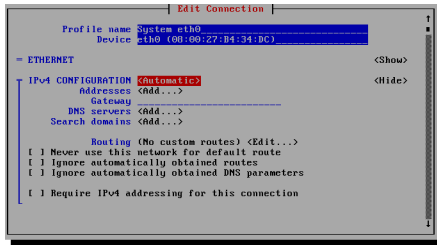
14. Use the `Grz q` arrow key to select `?Vkrz A` to the right of the `ISy7 FR Q ILJXUDWIR Q` section.



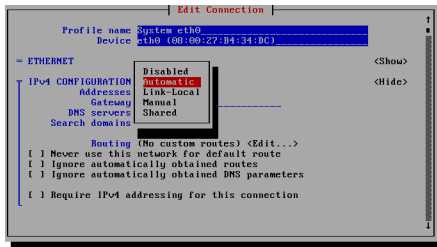
- Press `Hqwhu`.
The `ISy7 FR Q ILJ XUDWIR Q` section opens.



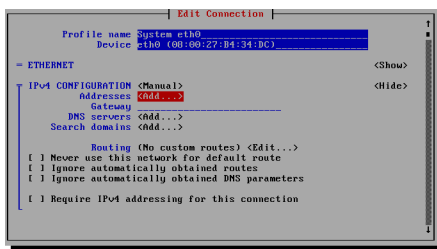
- Use the `Ohw` arrow key to select `?Dxwrp dwlfA` to the right of the `ISy7 FR Q ILJ XUDWIR Q` option.



- Press `Hqwhu`.
The `ISy7 FR Q ILJ XUDWIR Q` option list opens.



- Use the `Grz q` arrow key to select `P dqxd`
- Press `Hqwhu`.
The `ISy7 FR Q ILJ XUDWIR Q` option changes to `P dqxd` and the list closes.
- Use the `Grz q` arrow key to select `?DggllA` to the right of the `Dgguhvvhv` option.



- Press `Hqwhu`.
The `Dgguhvvhv` box opens.

- In the `Dgguhvvhv` box, enter the IP address and CIDR Netmask to set for your Caprica Server. For example:
`192.0.2.0/24`
- Use the `Grz q` arrow key to select the `Jdwhz d|` box.
- In the `Jdwhz d|` box, enter the IP address of the default gateway used by your Caprica Server.
- Use the `Grz q` arrow key to select `?RNA` at the bottom of the `HglwFrqqhfwrq` dialog box.
- Press `Hqwhu`.
The `HglwFrqqhfwrq` dialog box closes and the `Frqqhfwrq` dialog box opens.
- Use the `Uljkw` arrow key to select `?EdfnA` at the bottom of the `Frqqhfwrq` dialog box.
- Press `Hqwhu`.
The `Frqqhfwrq` dialog box closes and the `Qhwz runP dqdjhuWXL` dialog box opens.
- Use the `Grz q` arrow key to select `TxlwA` at the bottom of the `Qhwz runP dqdjhuWXL` dialog box.
- Press `Hqwhu`.
The `Qhwz runP dqdjhuWXL` dialog box closes and the UNIX command prompt displays.
- Reboot your Caprica Server by entering the following command at the command prompt:
`reboot`
- To verify that the correct IP address was set for your Caprica Server, complete the following steps:
 - Use the following credentials to log in to your Caprica Server as the `caprica` user:
 - `αrjlq: caprica`
 - `Sdvz rug: <your_password>`
 - At the command prompt, enter the following command:
 - `ip addr`
 - Verify that the output displayed by the `ip addr` command contains the IP address you set for your Caprica Server.

Compatibility

Automation	Version
Caprica Server	8.2

