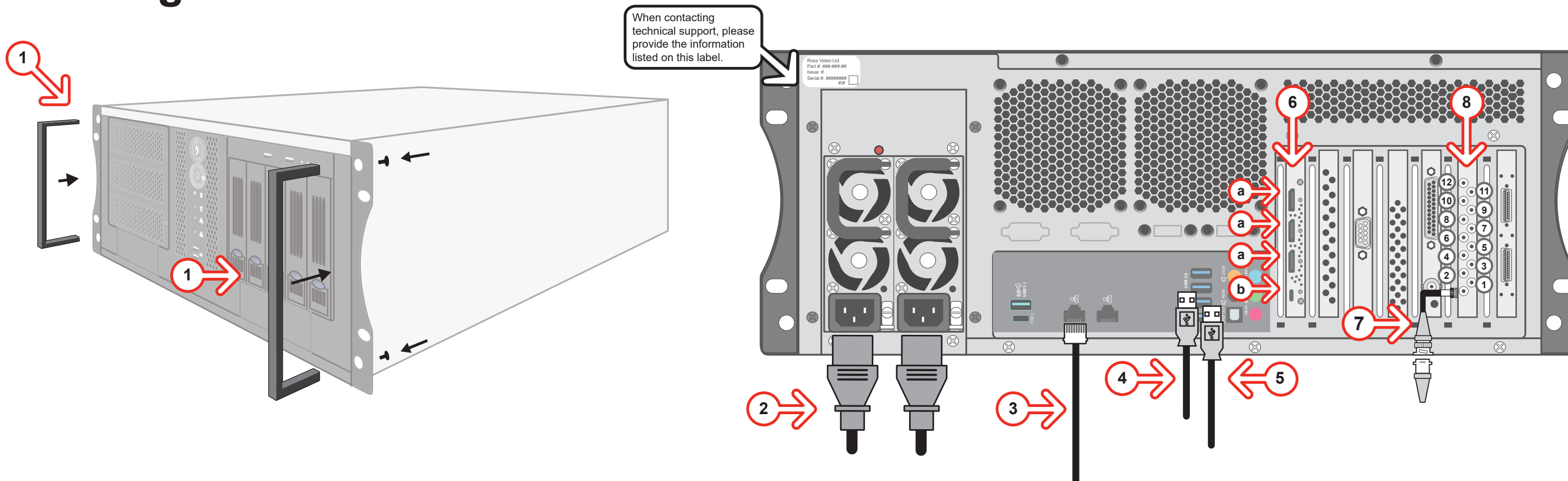


Getting Started

⚠ CAUTION: Before you set up and operate this product, see the "Important Safety Instructions" in your Manual.



- 1 Attach the handles to the front rack-mount tabs by aligning the handle with the round holes and fastening from the rear with the supplied screws.
Use the supplied Rack Mount Kit to mount the XPression system in a 19" EIA equipment rack.
For information on installing the XPression chassis in a rack, see the provided document Installing the Chassis in a Rack.
- 2 Connect power cords from the AC on the XPression system to the mains power.
XPression system power supplies are auto-sensing and can use either 110 VAC or 220 VAC.
- 3 Plug an Ethernet cable from your Local Area Network into one of the **Ethernet** ports.
XPression systems can run standalone or accept a connection to a production network. The network connection is also used for the Smart GPI / RossTalk feature.

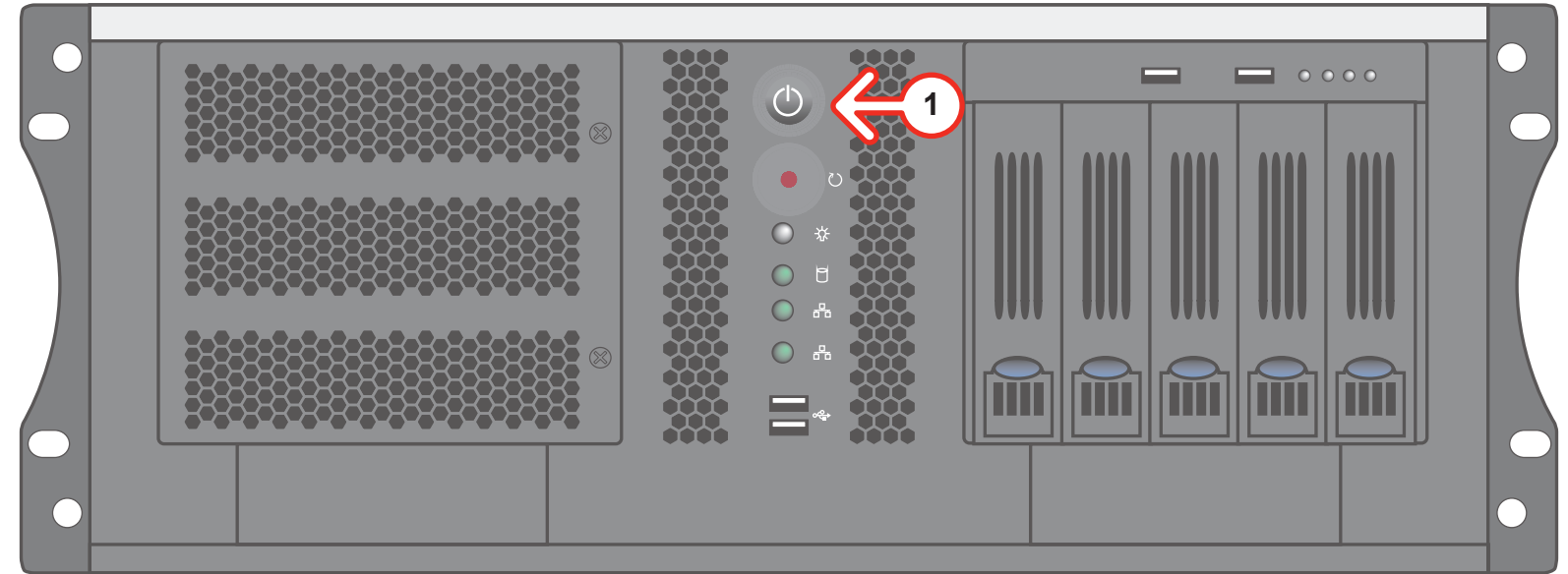
- 4 Plug the supplied Keyboard into a **USB** port.
- 5 Plug the supplied Mouse into a **USB** port.
- 6 Connect a monitor (customer supplied) to any of the three display ports (a).
A monitor may also be connected to the USB-C port (b). When using display ports, ensure the correct display port to DVI adapters are used (DVI-D or DVI-I).
KVM extenders (customer supplied) are required when the XPression system monitor, keyboard, and mouse are located remotely from the rack room.
- 7 Connect your house reference Genlock signal to the **REF** HD-BNC connector.
XPression systems accept analog blackburst or tri-level sync as reference inputs.
Tri-level sync is recommended for HD installations.

- 8 Connect the HD-BNC end of the pigtail cables to the HD-BNC connectors and attach the SDI cables to the BNC end of the pigtails according to their required destination (see the *XPression User Guide* or Help file for information about configuring the key and fill for the HD-BNC connectors).
See page 2 for configuration instructions.
Not all HD-BNC connectors will be active depending on the XPression software edition. Keep any unused pigtail and SDI cables in a safe place for future use.
If your facility requires analog outputs, additional outboard digital to analog conversion equipment is available from Ross Video.
Inputs/outputs can be configured in Hardware Setup as described in the XPression User Guide or Help file.

Getting Started continued

To launch XPression:

- 1 Press the **Power** button on the front of the XPression system.
Ross Video recommends shutting down XPression systems from the Windows operating system.
- 2 Click the XPression user account icon to log onto the system.
- 3 Launch XPression from the **Start** menu.



To configure the DSX LE4 /8:

- 1 From the folder that contains the **mvConnectorConfig.exe**, open the **Command Prompt**.
The default installation folder is C:\Program Files\Matrox DSX.utils\drivers in Windows.
- 2 Configure the inputs and outputs as follows:
mvConnectorConfig.exe -XinYout
Where:
X is the number of inputs
Y is the number of outputs
For example, to configure the inputs/outputs for 2 inputs/6 outputs, type "mvConnectorConfig.exe -2in6out."
- 3 Press **ENTER**.
- 4 Reboot your system to update the card with the new I/O configuration.
Follow the onscreen instructions to reboot your system.
The new configuration will be applied after the reboot.

HD-BNC	Default (2 in, 6 out)	8 out	UHD Mode* (8 Out)	4 in, 4 out	1 in, 7 out	3 in, 5 out	5 in, 3 out	6 in, 2 out	7 in, 1 out
1	In 1	--	--	In 1	In 1	In 1	In 1	In 1	In 1
2	Out 1 Fill	Out 1 Fill	Fill 1	Out 1 Fill	Out 1 Fill	Out 1 Fill	Out 1 Fill	Out 1 Fill	Out 1 Fill
3	In 2	--	--	In 2	--	In 2	In 2	In 2	In 2
4	Out 2 Fill	Out 2 Fill	Fill 2	Out 2 Fill	Out 2 Fill	Out 2 Fill	Out 2 Fill	--	--
5	--	--	--	In 3 (In 1 Key)	--	In 3	In 3 (In 1 Key)	In 3 (In 1 Key)	In 3 (In 1 Key)
6	Out 1 Key	Out 1 Key	Key 1	Out 1 Key	Out 2 Key	Out 1 Key	Out 1 Key	Out 1 Key	Out 1 Key
7	--	--	--	In 4 (In 2 Key)	--	--	In 4 (In 2 Key)	In 4 (In 2 Key)	In 4 (In 2 Key)
8	Out 2 Key	Out 2 Key	Key 2	Out 2 Key	Out 2 Key	Out 2 Key	--	--	--
9	Out 3 Fill	Out 3 Fill	Fill 3	--	Out 3 Fill	Out 3 Fill	In 5	In 5	In 5
10	--	Out 4 Fill	Fill 4	--	Out 4 Fill	--	--	--	In 6
11	Out 3 Key	Out 3 Key	Key 3	--	Out 3 Key	--	--	In 6 (In 5 Key)	In 7 (In 5 Key)
12	--	Out 4 Key	Key 4	--	--	--	--	--	--

Hardware bypass relays are present between 1 & 2, 3 & 4, 5 & 6, and 7 & 8.
*Flex editions only

For information on...

- operating XPression, see the *Trackless Studio User Guide* available in the C:\Archive folder
- maintenance of the XPression system, see the *XPression Maintenance Guide* in the C:\Archive folder
- other XPression features and functions, see the documents available in the C:\Archive folder

?

Need Help?

Technical Support:
1-844-652-0645 (North America)
+800 1005 0100 (International)
Email: techsupport@rossvideo.com