

XPression

XPression Prime Maintenance Guide

Version 02

Thank You for Choosing Ross

You've made a great choice. We expect you will be very happy with your purchase of Ross Technology. Our mission is to:

1. Provide a Superior Customer Experience
 - offer the best product quality and support
2. Make Cool Practical Technology
 - develop great products that customers love

Ross has become well known for the Ross Video Code of Ethics. It guides our interactions and empowers our employees. I hope you enjoy reading it below.

If anything at all with your Ross experience does not live up to your expectations be sure to reach out to us at solutions@rossvideo.com.



David Ross
CEO, Ross Video
dross@rossvideo.com

Ross Video Code of Ethics

Any company is the sum total of the people that make things happen. At Ross, our employees are a special group. Our employees truly care about doing a great job and delivering a high quality customer experience every day. This code of ethics hangs on the wall of all Ross Video locations to guide our behavior:

1. We will always act in our customers' best interest.
2. We will do our best to understand our customers' requirements.
3. We will not ship crap.
4. We will be great to work with.
5. We will do something extra for our customers, as an apology, when something big goes wrong and it's our fault.
6. We will keep our promises.
7. We will treat the competition with respect.
8. We will cooperate with and help other friendly companies.
9. We will go above and beyond in times of crisis. *If there's no one to authorize the required action in times of company or customer crisis - do what you know in your heart is right. (You may rent helicopters if necessary.)*

XPression Prime · Maintenance Guide

- Ross Part Number: **3505DR-006-02**
- Release Date: July 25, 2016.

The information contained in this Guide is subject to change without notice or obligation.

Copyright

©2016 Ross Video Limited, Ross®, and any related marks are trademarks or registered trademarks of Ross Video Limited. All other trademarks are the property of their respective companies. PATENTS ISSUED and PENDING. All rights reserved. No part of this publication may be reproduced, stored in a retrieval system, or transmitted in any form or by any means, mechanical, photocopying, recording or otherwise, without the prior written permission of Ross Video. While every precaution has been taken in the preparation of this document, Ross Video assumes no responsibility for errors or omissions. Neither is any liability assumed for damages resulting from the use of the information contained herein..

Patents

Patent numbers US 7,034,886; US 7,508,455; US 7,602,446; US 7,802,802 B2; US 7,834,886; US 7,914,332; US 8,307,284; US 8,407,374 B2; US 8,499,019 B2; US 8,519,949 B2; US 8,743,292 B2; GB 2,419,119 B; GB 2,447,380 B; and other patents pending.

Notice

The material in this manual is furnished for informational use only. It is subject to change without notice and should not be construed as commitment by Ross Video Limited. Ross Video Limited assumes no responsibility or liability for errors or inaccuracies that may appear in this manual.

Important Regulatory and Safety Notices to Service Personnel

Before using this product and any associated equipment, refer to the "Important Safety Instructions" listed below so as to avoid personal injury and to prevent product damage.

Products may require specific equipment, and /or installation procedures be carried out to satisfy certain regulatory compliance requirements. Notices have been included in this publication to call attention to these specific requirements.

Symbol Meanings



Protective Earth — This symbol identifies a Protective Earth (PE) terminal, which is provided for connection of the supply system's protective earth (green or green/yellow) conductor.



The exclamation point within an equilateral triangle is intended to alert the user to the presence of important operating and maintenance (servicing) instructions in the literature accompanying the product. Failure to heed this information may present a risk of damage or injury to persons or equipment.



Warning — The symbol with the word "**Warning**" within the equipment manual indicates a potentially hazardous situation, which if not avoided, could result in death or serious injury



Caution — The symbol with the word "**Caution**" within the equipment manual indicates a potentially hazardous situation, which if not avoided, may result in minor or moderate injury. It may also be used to alert against unsafe practices.



Notice — The symbol with the word "**Notice**" within the equipment manual indicates a situation, which if not avoided, may result in major or minor equipment damage or a situation, which could place the equipment in a non-compliant operating state.



Warning Hazardous Voltage — The lightning flash with arrowhead symbol within an equilateral triangle is intended to alert the user to the presence of uninsulated "dangerous voltage" within the product's enclosure that may be of sufficient magnitude to constitute a risk of shock to persons.



ESD Susceptibility — This symbol is used to alert the user that an electrical or electronic device or assembly is susceptible to damage from an ESD event.

Important Safety Instructions

- 1) Read these instructions.
- 2) Follow all instructions and heed all warnings.
- 3) Refer all servicing to qualified service personnel.
- 4) The equipment's AC appliance inlets are the means to disconnect the product from the AC Mains and must remain readily operable for this purpose.
- 5) Parts of the equipment's power supplies can still present a safety hazard even when the product is in the "OFF" state. To avoid the risk of electrical shock and to completely disconnect the apparatus from the AC Mains, remove all power supply cords from the product's AC appliance inlets prior to servicing.
- 6) If the product nameplate indicates that the chassis is "Rack Mounted", it is to be rack mounted only. To ensure safe operation and maintain long-term system reliability, proper installation requires that the front and back area of the chassis remain clear of obstructions so as not to restrict airflow.
- 7) The Optical Disk Drive within this product is a "Laser - Class 1 product".



Warning

8) No operator access to internal parts in this product. The power supply outputs are considered an Energy Hazard (>240VA). To avoid the risk of contact with the Energy Hazard and to completely de-energize the apparatus, remove all power supply cords from the product's AC appliance inlet(s) prior to servicing.



Warning

9) Indoor Use: To reduce the risk of fire or electric shock, do not expose this apparatus to rain or moisture.



Warning

10) This product includes an "Ethernet Port" which allows this product to be connected to a local area network (LAN). Only connect to networks that remain inside the building. Do not connect to networks that go outside the building.



Caution

11) This apparatus contains a Lithium battery, which if replaced incorrectly, or with an incorrect type, may cause an explosion. Replace only with the same type recommended by the manufacturer. Dispose of used batteries according to the manufacturer's instruction by qualified service personnel.

Use of Hazardous Substances in Electrical and Electronic Products (China RoHS)

Ross Video Limited has reviewed all components and processes for compliance to:

"Management Methods for the Restriction of the Use of Hazardous Substances in Electrical and Electronic Products" also known as China RoHS.

The "Environmentally Friendly Use Period" (EFUP) and Hazardous Substance Tables have been established for all products.

The Hazardous substances tables are available on our website at:

<http://www.rossvideo.com/about-ross/company-profile/greenpractices/china-rohs.html>

电器电子产品中有毒物质的使用

Ross Video Limited 按照以下的标准对所有组件和流程进行了审查:

“ 电器电子产品有害物质限制使用管理办法 ” 也被称为中国 RoHS。

所有产品都具有 “ 环保使用期限 ” (EFUP) 和有害物质表。目前, 我们正在更新我们所有的产品手册。

有害物质表在我们的网站:

<http://www.rossvideo.com/about-ross/company-profile/greenpractices/china-rohs.html>

EMC Notices

US

FCC Part 15

This equipment has been tested and found to comply with the limits for a class A Digital device, pursuant to part 15 of the FCC Rules. These limits are designed to provide reasonable protection against harmful interference when the equipment is operated in a Commercial environment. This equipment generates, uses, and can radiate radio frequency energy and, if not installed and used in accordance with the instruction manual, may cause harmful interference to radio communications. Operation of this equipment in a residential area is likely to cause harmful interference in which case the user will be required to correct the interference at his own expense.



Notice Changes or modifications to this equipment not expressly approved by Ross Video Ltd. could void the user's authority to operate this equipment.

CANADA

This Class "A" digital apparatus complies with Canadian **ICES-003**.

Cet appareil numérique de la classe "A" est conforme a la norme **NMB-003** du Canada.

EUROPE

This equipment is in compliance with the essential requirements and other relevant provisions of **CE Directive 93/68/EEC**.

AUSTRALIA

This equipment has been tested to **AS/NZS CISPR22:2009** and found to comply with the limits for a Class A Digital device.

INTERNATIONAL

This equipment has been tested to **CISPR 22:2009** and found to comply with the limits for a Class A Digital device.



Notice This is a Class A product. In domestic environments, this product may cause radio interference, in which case the user may have to take adequate measures.

Warranty and Repair Policy

Ross Video Limited (Ross) warrants its XPression systems to be free from defects under normal use and service for the following time periods from the date of shipment:

- **XPression Server** — 12 months
- **XPression Software Upgrades** — 12 months free of charge
- **System hard drives** — 54 months

If an item becomes defective within the warranty period Ross will repair or replace the defective item, as determined solely by Ross.

Warranty repairs will be conducted at Ross, with all shipping FOB Ross dock. If repairs are conducted at the customer site, reasonable out-of-pocket charges will apply. At the discretion of Ross, and on a temporary loan basis, plug in circuit boards or other replacement parts may be supplied free of charge while defective items undergo repair. Return packing, shipping, and special handling costs are the responsibility of the customer.

This warranty is void if products are subjected to misuse, neglect, accident, improper installation or application, or unauthorized modification.

In no event shall Ross Video Limited be liable for direct, indirect, special, incidental, or consequential damages (including loss of profit). Implied warranties, including that of merchantability and fitness for a particular purpose, are expressly limited to the duration of this warranty.

This warranty is TRANSFERABLE to subsequent owners, subject to Ross' notification of change of ownership.

Extended Warranty

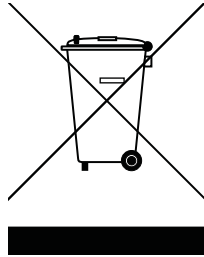
For customers that require a longer warranty period, Ross offers an extended warranty plan to extend the standard warranty period by one year increments. For more information about an extended warranty for your XPression system, contact your regional sales manager.

Environmental Information

The equipment that you purchased required the extraction and use of natural resources for its production. It may contain hazardous substances that could impact health and the environment.

To avoid the potential release of those substances into the environment and to diminish the need for the extraction of natural resources, Ross Video encourages you to use the appropriate take-back systems. These systems will reuse or recycle most of the materials from your end-of-life equipment in an environmentally friendly and health conscious manner.

The crossed-out wheeled bin symbol invites you to use these systems.



If you need more information on the collection, reuse, and recycling systems, please contact your local or regional waste administration.

You can also contact Ross Video for more information on the environmental performances of our products.

Company Address

Ross Video Limited

8 John Street
Iroquois, Ontario
Canada, K0E 1K0

Ross Video Incorporated

P.O. Box 880
Ogdensburg, New York
USA 13669-0880

General Business Office: (+1) 613 • 652 • 4886

Fax: (+1) 613 • 652 • 4425

Technical Support: (+1) 613 • 652 • 4886

After Hours Emergency: (+1) 613 • 349 • 0006

E-mail for Technical Support: techsupport@rossvideo.com

E-mail for General Information: solutions@rossvideo.com

Website: <http://www.rossvideo.com>

Contents

Introduction 1

- About This Guide 1-1
- Documentation Conventions 1-1
- Getting Help 1-1

Hardware Installation 2

- Hardware Overview 2-1
- Hardware Installation 2-5

Maintenance 3

- Front Door Filter Maintenance 3-1
- Removing and Re-Installing the Top Panel 3-5
- Replacing a System Drive 3-7
- Replacing Cooling Fans 3-12
- Accessing the USB Security Dongle 3-17
- Replacing the Power Supply 3-18

Appendix A: Pinouts A

- RS232 A-1

Introduction

Thank you for choosing a Ross Video XPression system.

Ross Video designed the XPression product line with the needs of live production in mind. XPression is an easy to use, yet powerful, 3D graphics and character generator. There are a range of XPression systems tailored to suit a variety of needs.

We appreciate your business and sincerely hope that you have a great experience with your new XPression system. As always, if there is anything that we at Ross Video can do to assist you, please do not hesitate to contact us.

About This Guide

This guide covers the installation and maintenance of the XPression Prime system. Refer to this guide and the accompanying Getting Started guide when your first install or need to reconfigure your system.

If, at any time, you have a question pertaining to the operation of the XPression Prime system, please contact Ross Video at the numbers listed in the section “**Contacting Technical Support**” on page 1–2. Our technical staff are always available for consultation, training, or service.

Documentation Conventions

Special text formats are used in this guide to identify parts of the user interface, text that a user must type, or a sequence of menus and submenus that must be followed to reach a particular command.

Bold text	Bold text is used to identify a user interface element such as a dialog box, menu item, or button. For example: In the IBP SD 4:2:0 Compression Options dialog box, select the ZigZag Scan option, and click OK .
Courier text	Courier text is used to identify text that a user must type. For example: At the prompt, type <code>c:\windows\system32</code> .
<i>Italic text</i>	Italic text is used to identify the titles of referenced guides, manuals, or documents. For example: For more information, refer to the section “ Input Channel Configuration ” on page 4–16 in the <i>XPression Installation and Configuration Guide</i> .
>	Menu arrows are used in procedures to identify a sequence of menu items that you must follow. For example, if a step reads “ Server > Save As ,” you would click the Server menu and then click Save As .

Getting Help

The XPression system Online Help system is accessed by selecting **Help Topics** from the **Help** menu. Alternatively, press the **F1** key while working with the XPression software.

The Online Help system contains navigation tabs to aid in locating information contained in the Online Help topics.

Contacting Technical Support

At Ross Video, we take pride in the quality of our products, but if problems occur, help is as close as the nearest telephone.

Our 24-hour Hot Line service ensures you have access to technical expertise around the clock. After-sales service and technical support is provided directly by Ross Video personnel. During business hours (eastern time), technical support personnel are available by telephone any time. After hours and on weekends, a direct emergency technical support phone line is available. If the technical support person who is on call does not answer this line immediately, a voice message can be left and the call will be returned shortly. This team of highly trained staff is available to react to any problem and to do whatever is necessary to ensure customer satisfaction.

- **Technical Support:** (+1) 613-652-4886
- **After Hours Emergency:** (+1) 613-349-0006
- **E-mail:** techsupport@rossvideo.com
- **Website:** <http://www.rossvideo.com>

Hardware Installation

This chapter provides a brief overview of and installation instructions for the XPression Prime system hardware.

Hardware Overview

This section provides a brief overview of the XPression Prime system hardware.

Front View of the System

The following diagram displays the front of the XPression Prime system (**Figure 2.1**) with the front door removed. Descriptions of individual components are contained in the legend below the diagram.

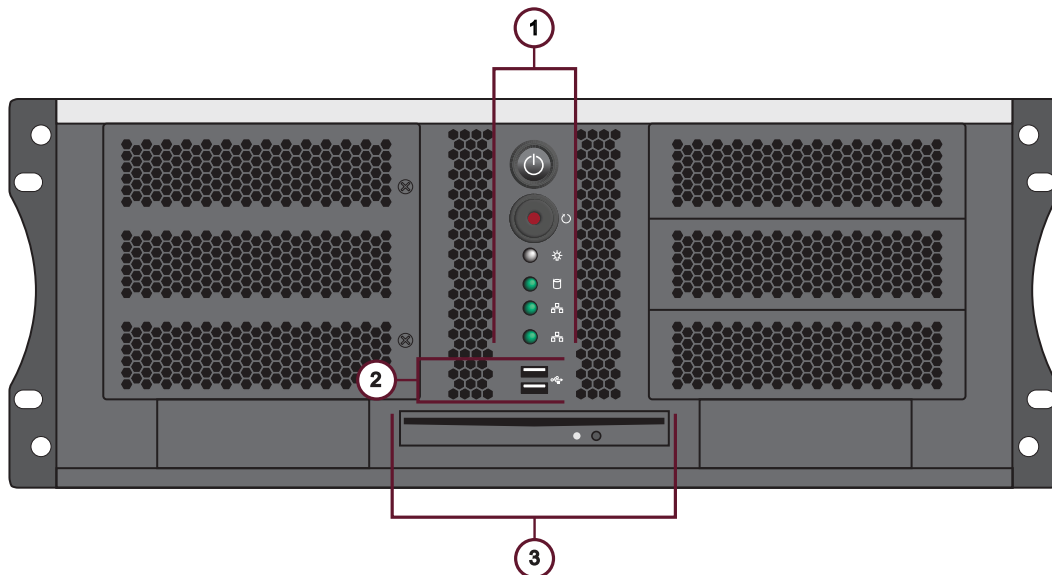


Figure 2.1 Front View of XPression Prime System

1. Power LED Area

This area includes the XPression Prime system Power button and LEDs for system components. Refer to the section, “**Power LED Area**” on page 2–2 for further information.

2. USB Ports

These ports can be used to transfer media to and from USB drives.

3. DVD-RW Drive

This drive can be used to transfer media onto drives, or create copies of existing media on CD or DVD for use elsewhere in a production environment. CD or DVD burning software must be installed on the XPression system before media can be saved to CD or DVD.

Power LED Area

The Power LED area is located on the front of the XPression Prime system, in the middle top of the chassis. This area contains the Power button for the XPression Prime system, as well as activity LEDs for system components. Refer to the section “**Front View of the System**” on page 2–1 to locate the Power LED Area on the front of the XPression Prime system.

The following diagram (**Figure 2.2**) displays the Power LED Area of the XPression Prime system. Descriptions of individual components are contained in the legend below the diagram.

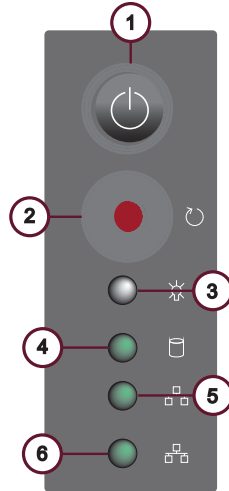


Figure 2.2 Power LED Area

1. Power Button

Press this button to begin the boot procedure. Press and hold the button for five seconds to power down the system after a hardware or software failure.

2. Reset Button

Press this button to reset the system after a hardware or software failure. Pressing this button also reboots the system.

3. Power Active Indicator LED

This LED is active when the system is powered on.

4. Hard Disk Activity LED

This LED activates when there is read/write activity on any system hard disk.

5. Network 1 Activity LED

This LED is not active.

6. Network 2 Activity LED

This LED is not active.

XPression Prime Rear Input/Output Connections

The following diagram (**Figure 2.3**) displays the Input/Output portion of the XPression Prime system. Descriptions of individual components are contained in the legend below the diagram.

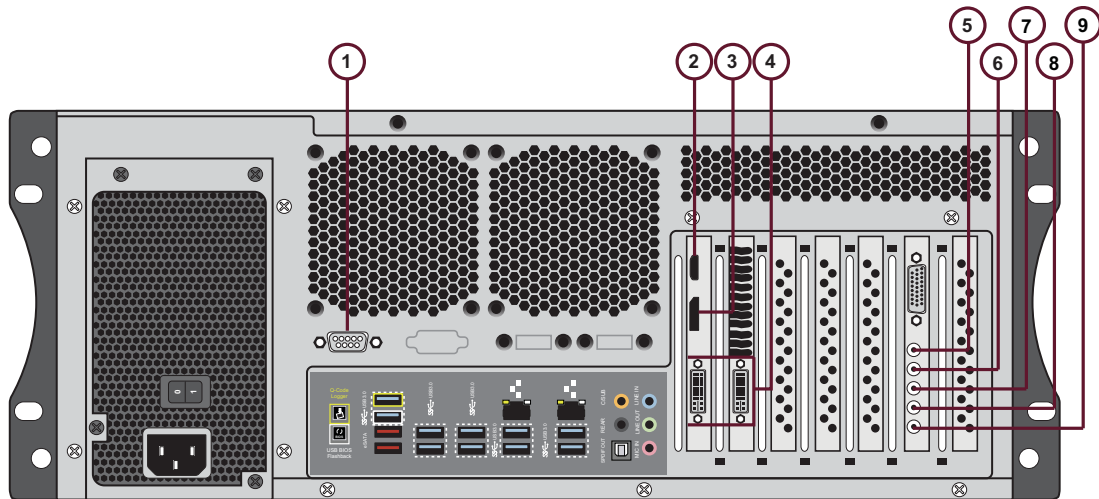


Figure 2.3 XPression Prime Rear Input/Output Connections

1. RS232 Port

Provides GPI and CII command functionality.

2. HDMI Port

Provides output for an HDMI monitor.

3. Display Port

Provides output for a computer monitor.

4. DVI Ports

One DVI-I port and one DVI-D port provide outputs for computer monitors. Digital monitors are recommended, however, analog monitors are supported via VGA-DVI adapters.

5. 3G Input 1

Currently not supported.

6. 3G Input 2

Provides background for when the XPression Prime system is using internal keying and also used for capturing a still image.

7. 3G Fill Out

Provides video fill in external key mode. In internal key mode, it provides the composite key over the input background source.

8. 3G Key Out

Provides key or alpha channel output when in external key mode. Provides no output in internal key mode.

9. Reference In

Provides video reference input connection.

Rear Peripheral Connections

The following diagram (**Figure 2.4**) displays the peripheral connections under the Input/Output connections. Descriptions of individual components are contained in the legend below the diagram.

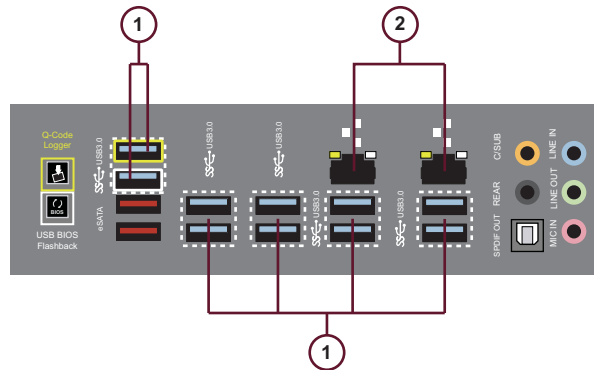


Figure 2.4 Rear Peripheral Connections

1. USB 3.0 Ports

Use these ports to connect peripheral devices such as a keyboard or mouse to the system. These ports can also be used to transfer media to and from USB drives.

The ports support a maximum of 5 Gbit/s.

★ Use of USB 3.0 certified cable and devices are required for USB 3.0 super-speed data rates.

2. GigE Ethernet Ports

Use this port to connect the XPression system to an internal network. These ports can be used for high-speed file transfer between the XPression system and other computers on the internal network.

Power Supplies

The XPression Prime system has a single power supply, located at the rear of the system on the left-hand side.

The diagram (**Figure 2.5**) displays the parts of the power supply for the XPression Prime system. Descriptions of individual components are contained in the legend below the diagram.

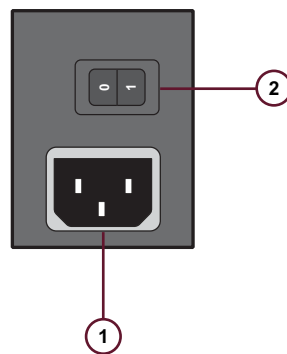


Figure 2.5 XPression Prime system Power Supply Unit

1. A/C Power Cord Connection

Connect the female end of the power cord to this connector, and the male end to a power circuit.

2. Power ON/OFF Switch

Turn the XPression Prime system power supply on or off.

Hardware Installation

The following sections provide installation instructions for the XPression Prime system hardware.

Unpacking the Unit

Unpack the XPression Prime system from the received shipping container(s), and check the contents against the packing list to ensure all items are included. If any items are missing or damaged, contact your sales representative or Ross Video for assistance.

Installation Requirements

Note the following installation requirements:

- **Elevated Operating Ambient** — If installed in a closed or multi-rack assembly, the operating ambient temperature of the rack environment may be greater than the room ambient. Therefore, consideration should be given to installing the equipment in an environment compatible with the maximum ambient temperature (T_{ma}).
- **Reduced Air Flow** — Installation of the equipment in a rack or as a desktop/tower should be such that the amount of air flow required for safe operation of the equipment is not compromised.
- **Mechanical Loading** — Mounting of the equipment in the rack should be such that a hazardous condition is not achieved due to uneven mechanical loading.
- **Circuit Overloading** — Consideration should be given to the connection of the equipment to the supply circuit and the effect that overloading of the circuits might have on overcurrent protection and supply wiring. Appropriate consideration of equipment nameplate rating should be used when addressing this concern.
- **Reliable Earthing** — Reliable earthing of rack and desktop/tower mounted equipment should be maintained. Particular attention should be given to supply connections other than direct connections to the branch circuit (e.g. use of power strips).

Installing the System in an Equipment Rack

The XPression Prime system can be rack mounted in a 16.9 inch wide equipment rack using a rack mount kit (not supplied).

★ Contact Ross Video to order the rack mount kit for an XPression Prime system.

- **Rack** — 16.9 inch (43.0 cm) wide equipment rack
- **Rack Units** — 4 RU
- **Height** — 6.5 inches (17.6 cm)
- **Depth** — 21.5 inches, including rear BNCs (54.6 cm)

The slide rails must be installed onto the XPression Prime system before it can be mounted in an equipment rack.

★ Failure to install the XPression Prime system into an equipment rack using the rack mount kit available from Ross Video will void the XPression Prime system warranty.

Installation Instructions

Note the following installation instructions:

1. This equipment has an operating temperature range of 0° C to 35° C. The ambient temperature in the rack shall not exceed this temperature range.
2. A minimum clearance of 0.25" on each side of the equipment must be maintained after installation in the rack.
3. Take care not to compromise the stability of the rack by installing this equipment.

Setting Up the System as a Desktop

The XPression Prime system can be used as a desktop.

Installation Instructions

1. Place XPression Prime system horizontally on a level and stable surface.

Setting Up the System as a Tower

The XPression Prime system can be set up as a tower using the supplied pedestal feet.

Installation Instructions

1. Turn the four pedestal feet outwards to the sides of the XPression Prime system so that there are two deployed pedestal feet on each side of the system.
2. Stand the XPression Prime system on a level and stable surface.

Attaching the Cables

To attach the cables to the XPression Prime system:

1. On the back of the XPression Prime system, connect the supplied line cords to the power supply, then plug the line cord into a grounded outlet.

The power supply is auto-sensing and can accept line voltages from 100 through 240VAC.

2. Plug the supplied USB keyboard into one of the **USB** ports on the back of the XPression Prime system.
3. Plug the supplied USB mouse into one of the **USB** ports.
4. Connect a monitor, customer supplied, to the **DVI 1** port.

An additional monitor can be connected to the **DVI 2** port to provide additional space for virtual preview channels, custom applications, web page capture, and more.

5. Plug an Ethernet cable from the internal network into one of the **GigE Ethernet** ports.

XPression Prime systems can run standalone or accept a network connection if required to connect to a production network. XPression Prime systems also use this TCP/IP network connection to support the Smart GPI Feature.

6. Connect the GenLock signal cable to the **REF IN** BNC connector on the breakout cable. This connection is required to lock the XPression Prime system to the video timing of the facility. The XPression Prime system supports the following types of GenLock signal:

- **Analog BlackBurst** — a composite color video signal comprised of sync, color burst, and black video. Also called “color black”, “house sync” or “house black”. Typically used as the house reference synchronization signal.
- **Tri-Level Sync** — a three-level pulse synchronization signal used in high definition systems.

To transmit the GenLock signal from the XPression Prime system, connect a GenLock signal cable to the **REF OUT** BNC connector.

7. On the breakout cable, connect the audio output cables to the **AES/EBU** BNCs. After the XPression Prime system is up and running, audio outputs can be assigned to each video channel.

The XPression Prime system provides AES3id 75 ohm BNC outputs. If AES3 110 ohm connections are required, optional GearLite adaptors are available from Ross Video. For facilities requiring analog outputs, additional outboard analog to digital conversion equipment is also available from Ross Video.

8. Connect your Video Input cables to the **VIDEO IN** BNC connectors.

The XPression Prime system provides either SDI or SDI / HD-SDI inputs. For facilities requiring analog inputs, additional outboard analog to digital conversion equipment is also available from Ross Video.

9. Connect Channel 1 Fill & Key output cables from **SDI Fill Out** and **SDI Key Out** outputs to their required destination (production switcher, master control switcher, or keyer for example).

The XPression Prime system provides either SDI or SDI / HD-SDI outputs. For facilities requiring analog outputs, additional outboard analog to digital conversion equipment is also available from Ross Video.

Powering Up the System

To power up the system:

1. Press the **Power** button to begin the boot procedure.
If the system does not boot, ensure that the power ON/OFF switch on the power supply is turned on.
2. Close the front door to protect the XPression Prime system from dust.

Powering Down the System

Whenever the XPression Prime system needs to be powered down, use the following procedure:

To power down the system:

1. Log on to the XPression Prime system using the following user name with no password:
 - **User name:** xpression
2. From the **Start Menu**, select **Shut Down**.
The **Shut Down Windows** dialog box opens.
3. Select **Shut down** from the list.
4. Click **OK**.

Maintenance

This chapter provides information on maintaining the XPression Prime system.



Caution — *Danger of Explosion if the system lithium battery is incorrectly replaced. Replace **only** with the same or equivalent type of battery recommended by the manufacturer. Dispose of used batteries according to the manufacturer's instructions by a qualified service person.*

Front Door Filter Maintenance

The front door on the XPression Prime system comes equipped with two mesh filters to protect the inside of the XPression system from dust and debris.

Ross Video recommends that the following filter maintenance be performed:

- Periodically check the filter for dust and debris buildup and clean the filter.
- Replace the filter if it is damaged or worn.

Cleaning the Front Door Filters

The mesh filter can be cleaned with a soft brush, cloth, or vacuum as needed. If the filter requires a more thorough cleaning, it can be removed from the door and washed with a mild soap and water solution.

★ The filter must be completely dry before it is reinstalled in the door.

Removing the Front Door Filters

To remove the filters from the front door of the XPression Prime system:

1. Open the front door of the XPression Prime system.



2. Lift the filters from the door.



The filters can now be thoroughly cleaned.

Re-installing the Front Door Filters

To re-install the filters in the front door of the XPression Prime system:

3. Insert the filters into the inside of the open front door.



4. Snap the nubs on the sides of the filters into the grooves on the inside of the front door.

Removing the Front Fan Filter

To remove the filter from the front fan of the XPression Prime system:

1. Open the front door of the XPression Prime system.



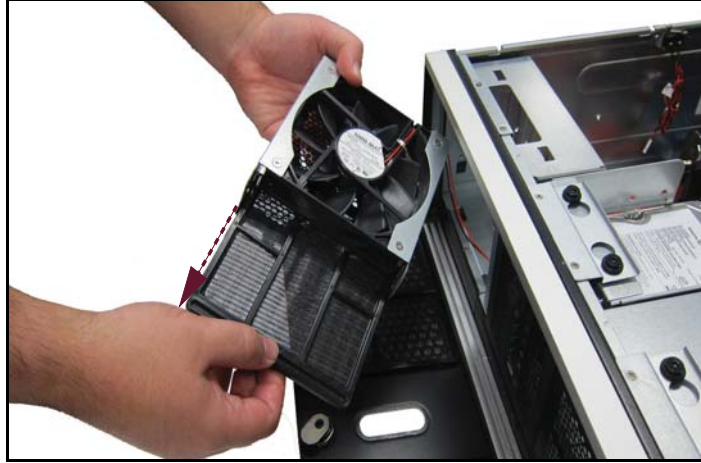
2. Unscrew the two thumb screws on the front fan cage.



3. Remove the front fan cage from the XPression Prime system.



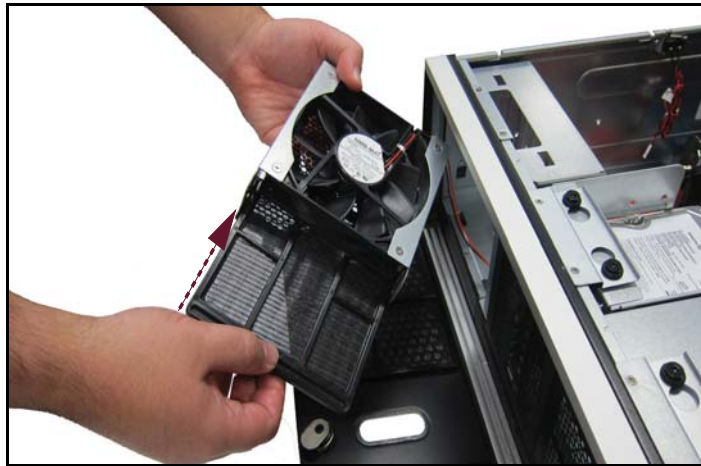
4. Remove the filter from the front fan cage.



Re-installing the Front Fan Filter

To re-install the filter from the front fan of the XPression Prime system:

1. Insert the filter into the front fan cage.



2. Insert the front fan cage into the front of the XPression Prime system.



3. Tighten the two thumb screws to fasten the front fan cage to the XPression Prime system.



4. Close the front door of the XPression Prime system.

Removing and Re-Installing the Top Panel

The top panel of the XPression Prime system can be removed to gain access to internal components such as fans, cards, and the USB security dongle.



Caution — *Do not operate the XPression system with the top panel removed.*

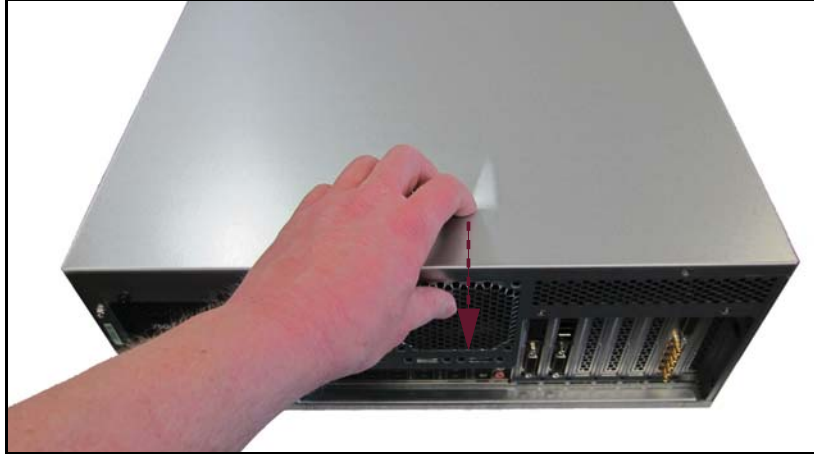
To remove the top panel of the XPression Prime system:

1. Shutdown the XPression Prime system, remove all cabling, and place the system on a flat, non-slip surface.
2. Remove the two thumbscrews at the back of the XPression system.



Set the two thumbscrews aside, as they will be needed to replace the top panel.

3. Gently pull the top panel back towards the rear of the unit, creating a gap between the top panels of the unit.



4. Lift the top panel off the chassis.

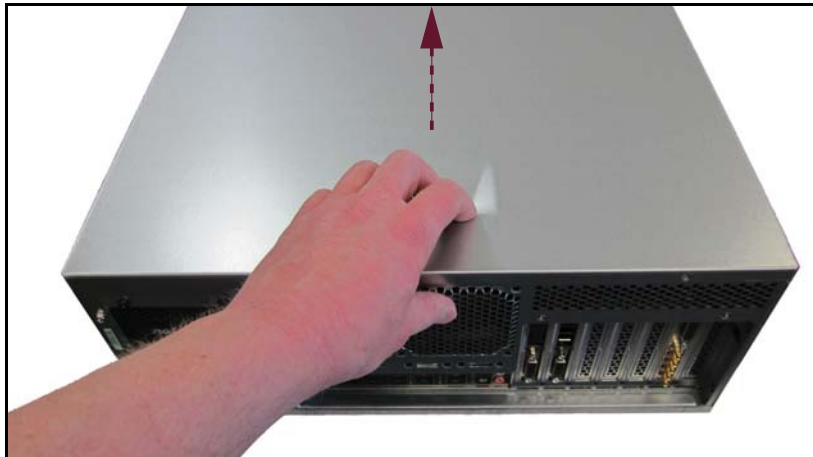


To re-install the top panel

1. Place the top panel onto the top of the XPression Prime system as follows:
 - Face the sides of the top panel down around the sides of the system.
 - Line up the four nubs on the inside of the sides of the top panel with the L-shaped grooves on the sides of the system.



2. Gently slide the top panel into place, until a clicking noise is heard and the top panel is flush to the front top of the XPression Prime system.



3. Insert and tighten the two thumbscrews into the back of the XPression system.



Replacing a System Drive

The XPression Prime system drives that are located inside the chassis can be replaced.

- ★ XPression Prime drives are not hot-swappable. The system must be shut down before replacing a drive.



Protective Earth — *Static discharge can cause serious damage to sensitive devices. Avoid handling any hard drive in high static environments such as carpeted areas and when synthetic fiber clothing is worn. Touch the chassis to dissipate static charge before removing hard drives from the system, and exercise proper grounding precautions when working around the XPression system.*

Removing a System Drive

To remove a system drive from the XPression Prime system:

1. Make sure the XPression Prime system is shut down.
2. Remove the top panel from the XPression Prime system. Refer to the section “**Removing and Re-Installing the Top Panel**” on page 3–5 for instructions.

3. Disconnect the power wires from the drives.

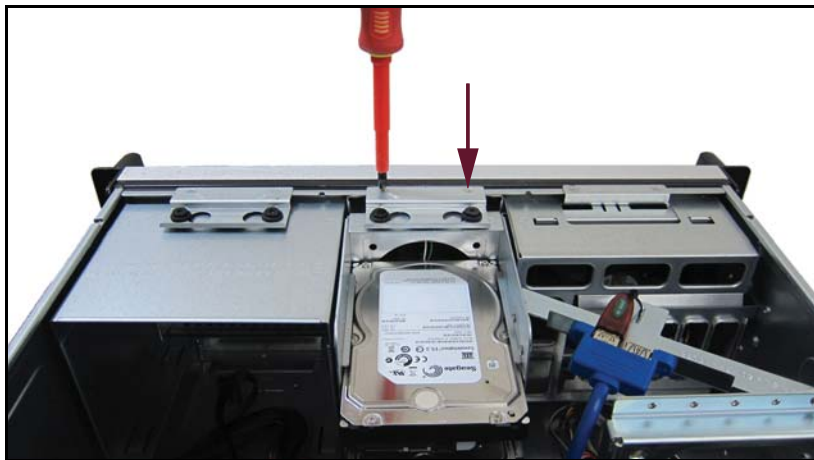


4. Disconnect the XPression Prime system from the drives.

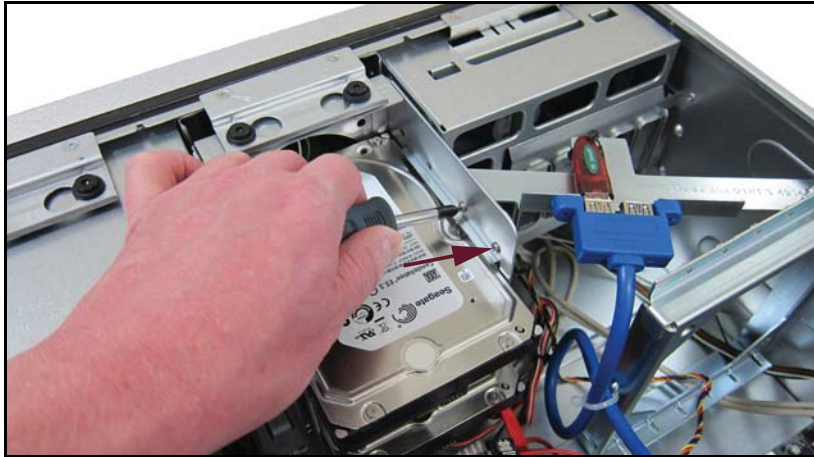


5. Using a Phillips head screwdriver, remove the two screws located on the top of the drive cage at the front of the XPression Prime system.

Do not remove the black screws and grommets located on the drive cage.



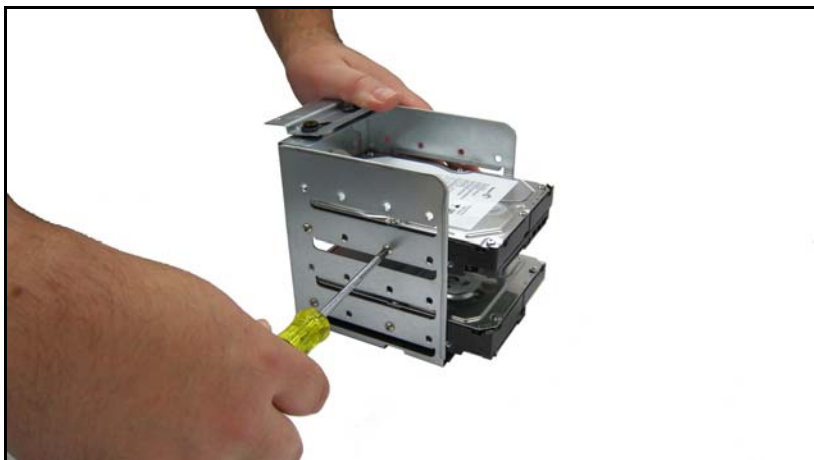
- Using a Phillips head screwdriver, remove the screws located on the side of the drive cage that are attached to the USB bracket.



- Gently lift the drive cage from the XPression Prime system.



- Using a Phillips head screwdriver, remove the screws from the drive cage. There are four screws in total per drive.



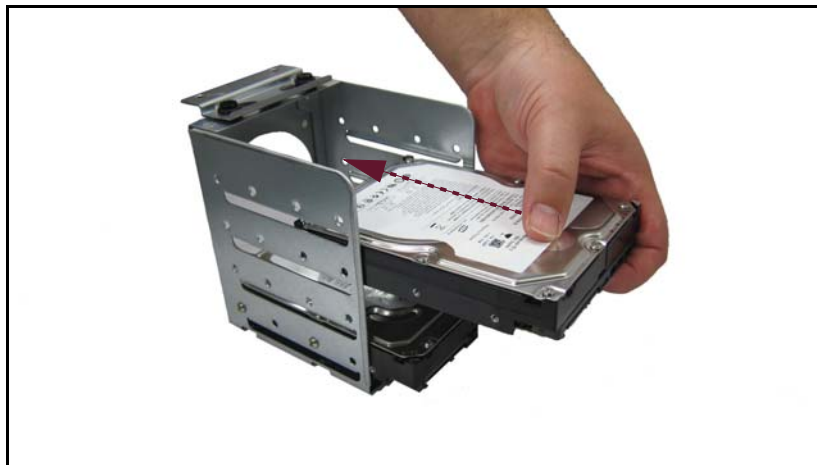
9. Remove the drive from the drive cage.



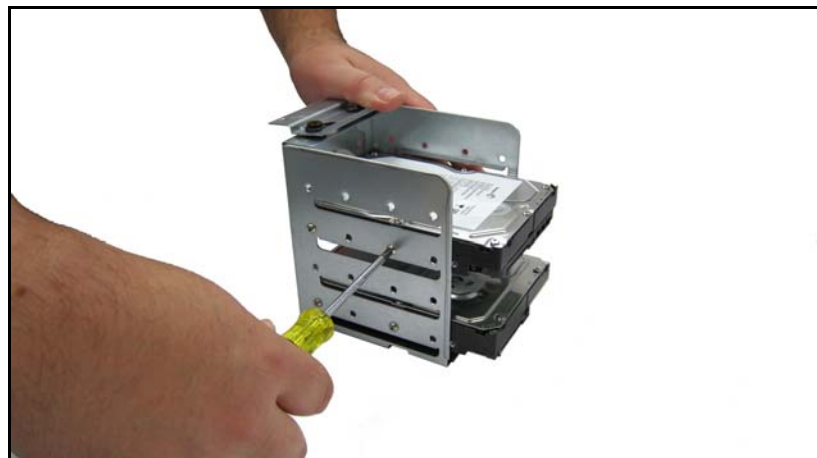
Replacing a System Drive

To replace a system drive:

1. Insert the new drive into the drive cage with the with label facing upwards and the connectors at the open end of the cage.



2. Insert and tighten the Phillips head screws in the screw holes. There are four screws in total: two on each side of the drive cage.

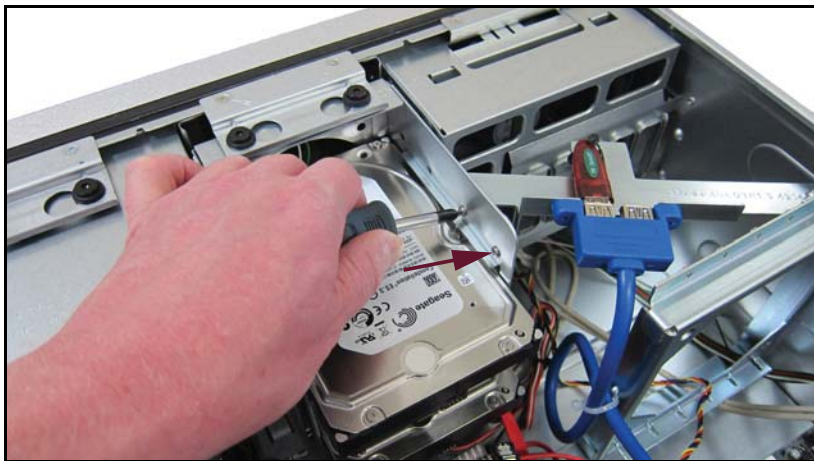


The drive cage is now ready to be re-inserted into the XPression Prime system.

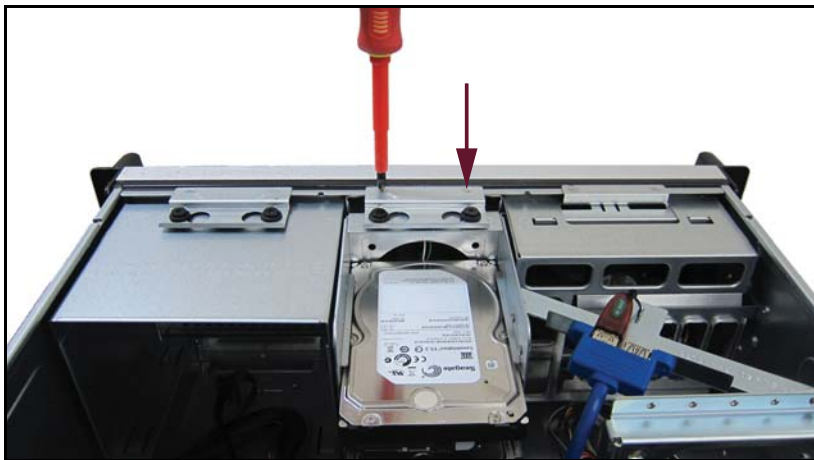
3. Insert the drive cage into the XPression Prime system.



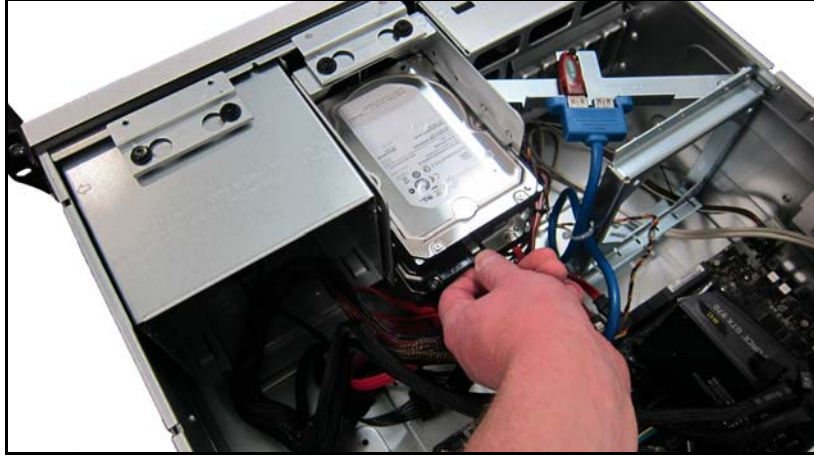
4. Using a Phillips head screwdriver, insert the screw on the side of the drive cage to attach it to the USB bracket.



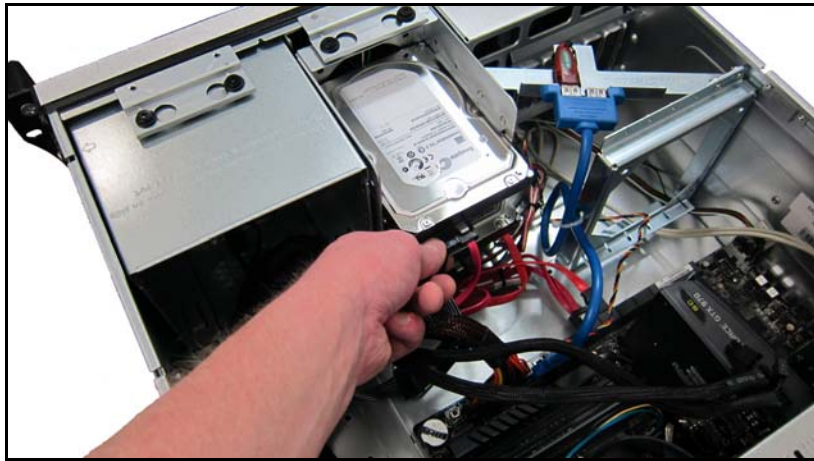
5. Using a Phillips head screwdriver, insert the two screws on the top of the drive cage at the front of the XPression Prime system.



6. Connect the XPression Prime system to the drives.



7. Connect the power wires to the drives.



8. Re-install the top panel on the XPression Prime system. Refer to the section “Removing and Re-Installing the Top Panel” on page 3–5 for instructions.

Replacing Cooling Fans

The XPression Prime system has four cooling fans. The front chassis fan and inside chassis fan can be replaced if they fail.

There are two fans on the CPU cooler. To replace the CPU cooler fans, please contact Ross Video Technical Support for assistance.

- ★ The XPression system must be shut down when replacing the cooling fans.



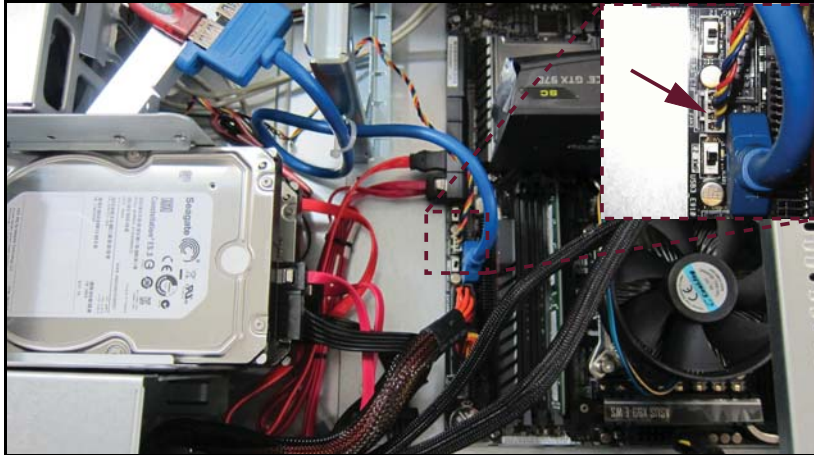
Protective Earth — *Static discharge can cause serious damage to sensitive devices. Avoid handling any hard drive in high static environments such as carpeted areas and when synthetic fiber clothing is worn. Touch the chassis to dissipate static charge before removing hard drives from the system, and exercise proper grounding precautions when working around the XPression system.*

If a fan fails, the fan failure alarm will trigger. Refer to the section “Power LED Area” on page 2–2 for further information on XPression Prime system hardware alarms.

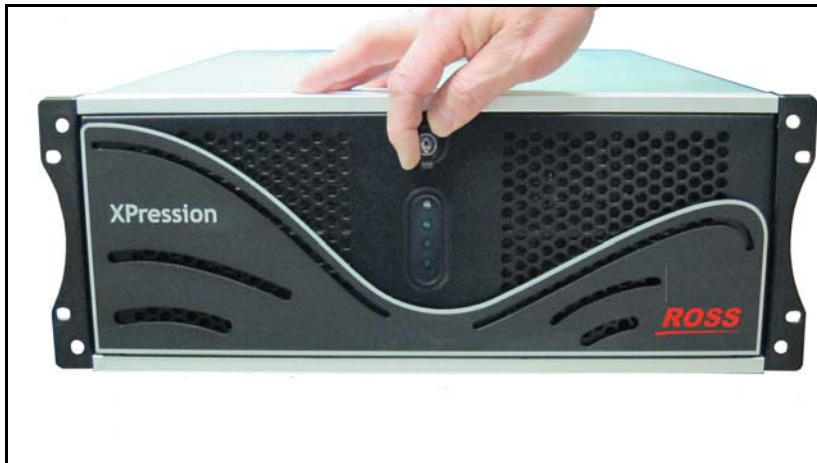
Replacing the Front Chassis Fan

To remove the front chassis fan:

1. Make sure the XPression Prime system is shut down.
2. Remove the top panel from the XPression Prime system. Refer to the section “**Removing and Re-Installing the Top Panel**” on page 3–5 for instructions.
3. Disconnect the front chassis fan power supply wire.



4. Open the front door of the XPression Prime system.



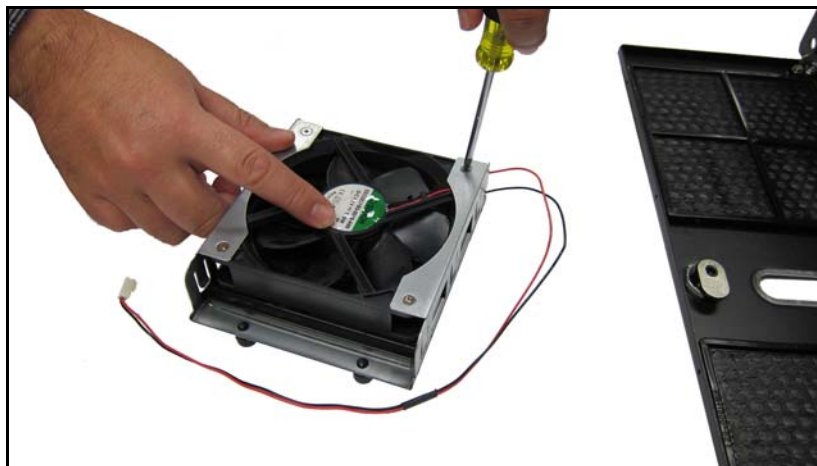
5. Unscrew the two thumb screws on the front fan cage.



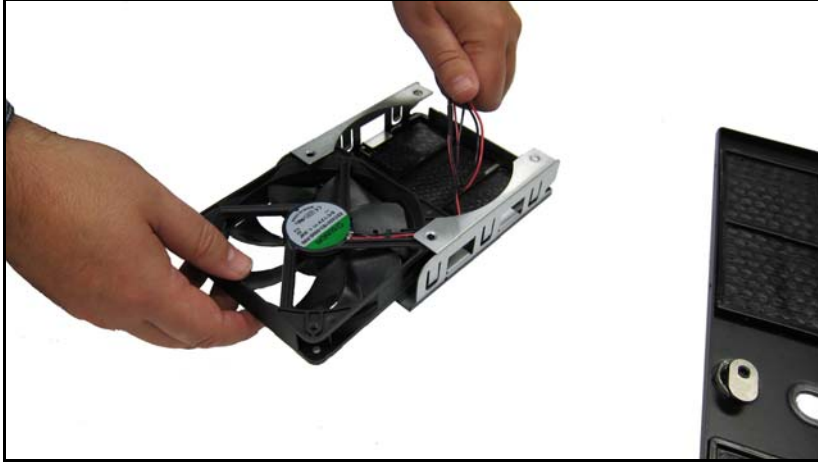
6. Remove the front fan cage from the XPression Prime system.



7. Using a Phillips head screwdriver, remove the screws from the fan cage. There are four screws in total.

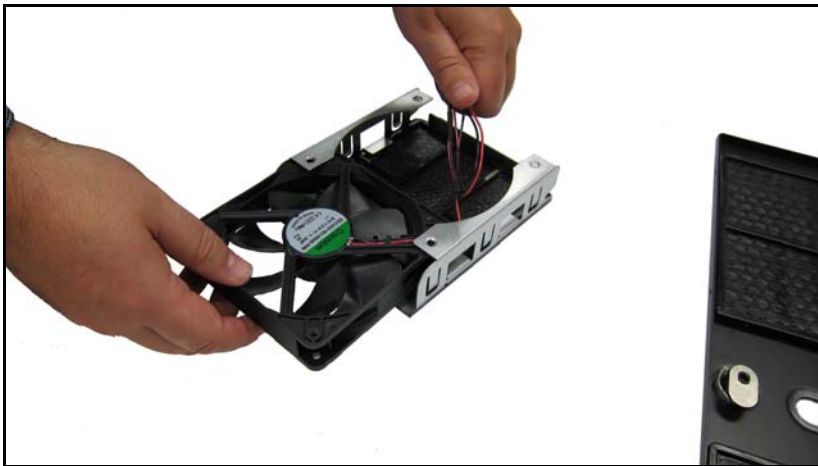


8. Remove the fan from the fan cage.

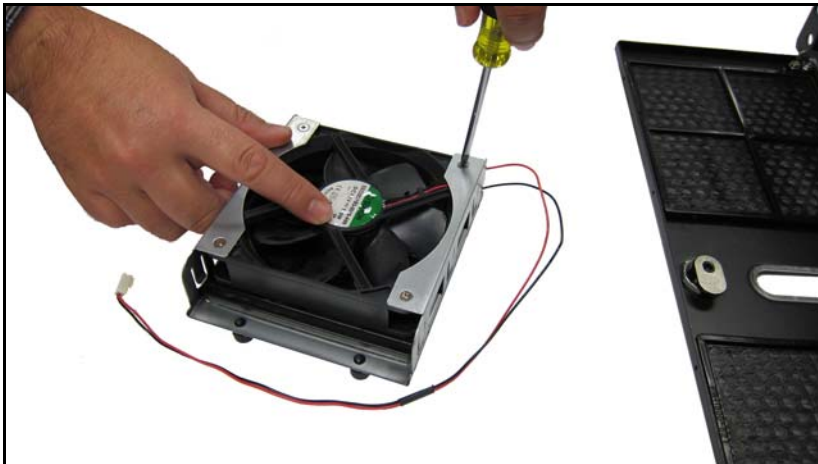


To install the front chassis fan:

1. Insert the new fan into the fan cage.



2. Insert and tighten the Phillips head screws in the screw holes. There are four screws in total.



3. Insert the front fan cage in the XPression Prime system with the fan wire inside the XPression Prime chassis.



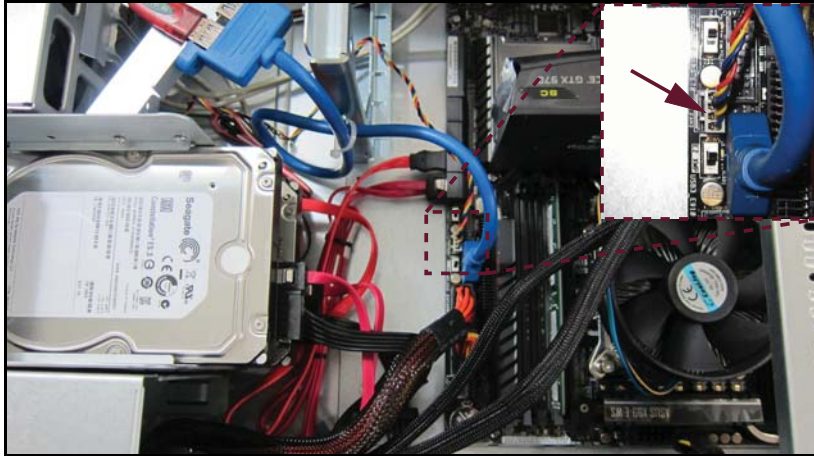
4. Tighten the two thumb screws on the front fan cage.



5. Close the front door of the XPression Prime system.



6. Connect the front chassis fan power supply wire.



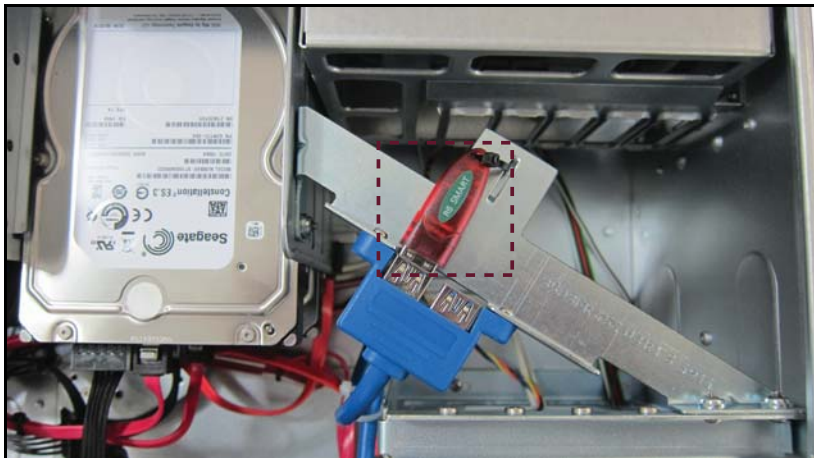
7. Replace the top panel. Refer to the section “**Removing and Re-Installing the Top Panel**” on page 3–5 for instructions.

Accessing the USB Security Dongle

You may be required to remove or replace the USB security dongle if instructed to do so by Ross Video Technical Support.

To access the USB security dongle:

1. Remove the top panel from the XPression Prime system. Refer to the section “**Removing and Re-Installing the Top Panel**” on page 3–5 for instructions.
2. The USB security dongle is located inside the chassis behind the front chassis fan. The security dongle connects to the XPression Prime system via a USB interface. Remove and replace the security dongle as instructed by Ross Video Technical Support.



Use the additional USB interface to install an additional dongle if necessary.

3. Replace the top panel. Refer to the section “**Removing and Re-Installing the Top Panel**” on page 3–5 for instructions.

Replacing the Power Supply

The XPression Prime system has one power supply, located at the rear of the system on the left-hand side.



Protective Earth — *Static discharge can cause serious damage to sensitive devices. Touch the chassis to dissipate static charge before removing power supplies from the system, and exercise proper grounding precautions when working around the XPression system.*

Keep the following safety information in mind while removing the power supply from the XPression Prime system:

- Always ground yourself before touching electronic equipment.
- When removing the power supply unit, always support the unit with two hands to help prevent dropping it.



Warning Hazardous Voltages — *Disconnect the power supply from AC mains before servicing.*

Hazardous voltages remain within the power supply for a short period of time after removal from the system. The power supply cover is intended to protect the user from access to these areas, and should not be removed. Ross Video power supplies are intended to be factory serviced by qualified Ross Video service personnel only. Service or any component replacement is not advised.

Removing the Power Supply

To remove the power supply from the XPression Prime system:

1. Make sure the XPression Prime system is shut down.
2. At the back of the XPression Prime system, turn off the power switch located on the power supply.
3. Disconnect the power cord from the power supply.
4. Remove the top panel from the XPression Prime system. Refer to the section “**Removing and Re-Installing the Top Panel**” on page 3–5 for instructions.
5. Unscrew the retaining bar screw.

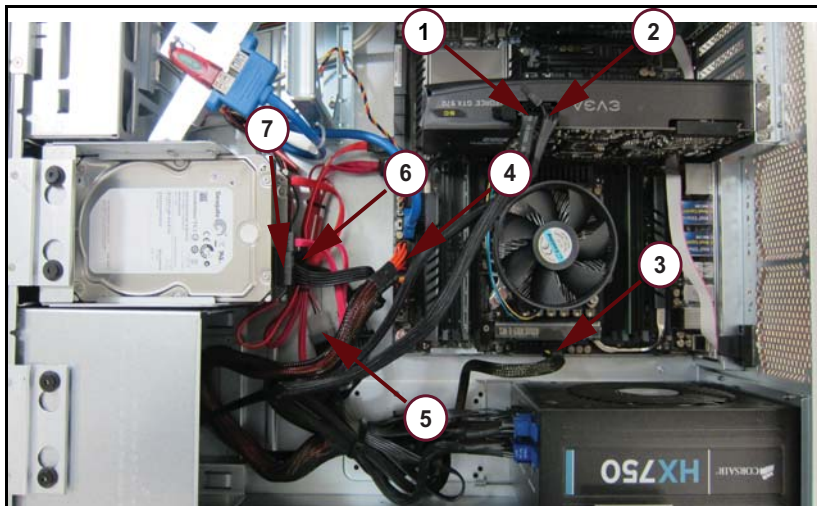


6. Remove the retaining bar.



7. Disconnect the power supply cables from the XPression Prime system. There are seven cables in total to disconnect:

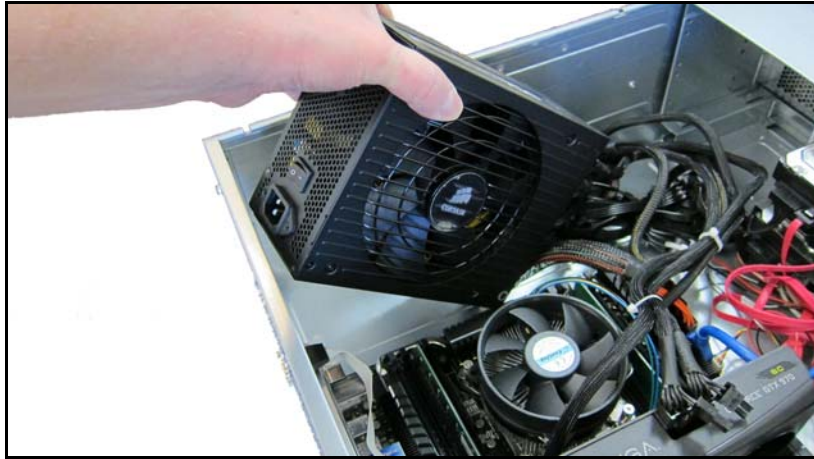
- two from the GPU (1, 2)
- two from the motherboard (3, 4)
- one from the DVD drive (5)
- two from the system drives (6, 7)



8. Unscrew the four screws that fasten the power supply to the XPression Prime chassis.



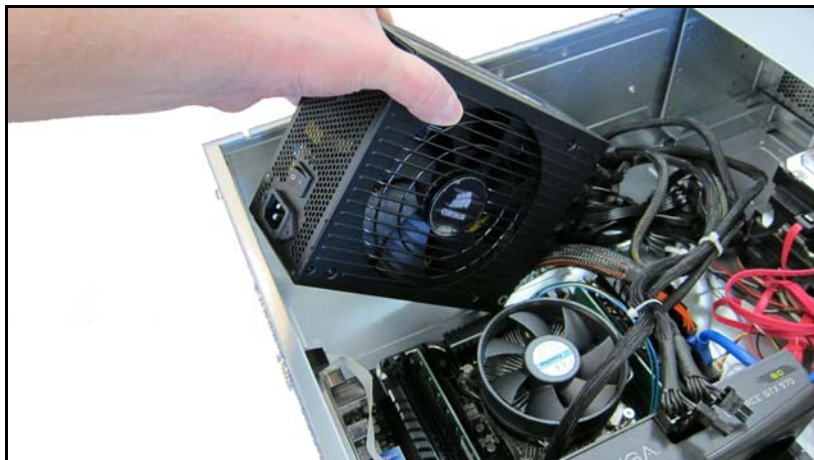
9. Gently remove the power supply from the XPression Prime chassis.



Installing a Power Supply

To install a new power supply in the XPression Prime system:

1. Gently insert the power supply in the XPression Prime chassis.

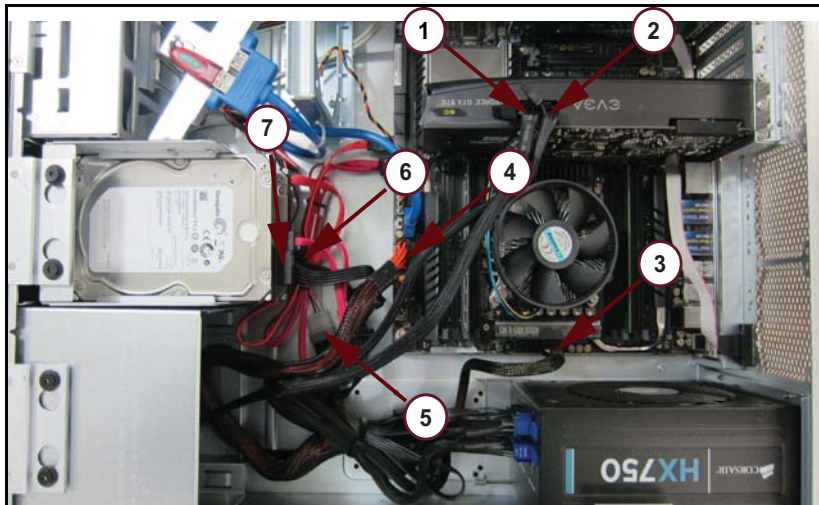


2. Insert and tighten the four screws to fasten the power supply to the XPression Prime chassis.



3. Connect the power supply cables to the XPression Prime system. There are seven cables in total to connect:

- two to the GPU (1, 2)
- two to the motherboard (3, 4)
- one to the DVD drive (5)
- two to the system drives (6, 7)



4. Attach the retaining bar.



5. Insert and tighten the retaining bar screw.



6. Re-install the top panel on the XPression Prime system. Refer to the section “**Removing and Re-Installing the Top Panel**” on page 3–5 for instructions.
7. Connect the power cord to the power supply.
8. At the back of the XPression Prime system, turn on the power switch located on the power supply.

Appendix A: Pinouts

This appendix provides information on the RS232 port pinouts.

RS232

XPression offers two GPI options:

- **GPI 1:** Data Set Ready pin 6 and pin 7
- **GPI 2:** Clear to Send pin 8 and pin 7

The RS232 port can also be used for CII using the XPression CII Gateway option.



Figure A.1 RS232 — Male

Table A.1 RS232 Pinouts

Pin #	Signal
1	Data Carrier Detect
2	Received Data
3	Transmitted Data
4	Data Terminal Ready
5	Signal Ground

Pin	Signal
6	Data Set Ready
7	Request to Send
8	Clear to Send
9	Ring Indicator

- ★ When creating an RS232 GPI trigger, create a device that short-circuits either pin 8-7 or 6-7 on the nine pin female connector. No additional power can be added to the circuit or it will damage the RS232 port.

Notes:

Notes:

Notes:

Contact Us

Contact our friendly and professional support representatives for the following:

- Name and address of your local dealer
- Product information and pricing
- Technical support
- Upcoming trade show information

Technical Support

Telephone: +1 613 • 652 • 4886
After Hours Emergency: +1 613 • 349 • 0006
Email: techsupport@rossvideo.com

General Information

Telephone: +1 613 • 652 • 4886
Fax: +1 613 • 652 • 4425
Email: solutions@rossvideo.com
Website: <http://www.rossvideo.com>

Visit Us

Visit our website for:

- Company information and news
- Related products and full product lines
- Online catalog
- Testimonials