

## Configuring Autocue™ Q-Series Newsroom and XPression

This app note describes how to configure Q-Series to interface with XPression.

### System Requirements

- XPression Gateway version 5.5.2722 or higher
- XPression ActiveX plugin version 5.5.2722 or higher
- Q-Series version 1.5 build 2081 or higher:
  - Q-Series must be licensed to enable Ross XPression plugin support
  - Q-Series requires a MOS Export server dedicated to communicating with XPression and no other MOS devices
- As needed: XPression Offline Engine, XPression Playout Engines, XPression Remote Sequencer, etc.
- Q-Series might have other requirements. Users should contact Autocue for full specifications.

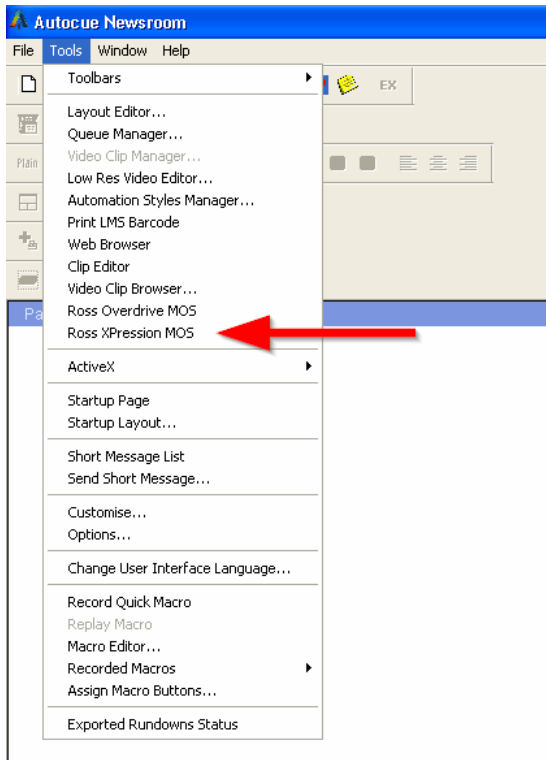
### Configuring Q-Series

Before installing XPression ActiveX plugin, ensure that Autocue Newsroom is fully configured and functional.

#### To configure Autocue Newsroom:

1. Install the XPression ActiveX plugin onto all Autocue Newsroom client machines that require the ability to add or modify XPression graphics in Autocue Newsroom rundowns.
2. Restart the Autocue Newsroom client.

3. In the **Tools** menu of Autocue Newsroom, ensure that the **Ross XPression MOS** menu item is present.



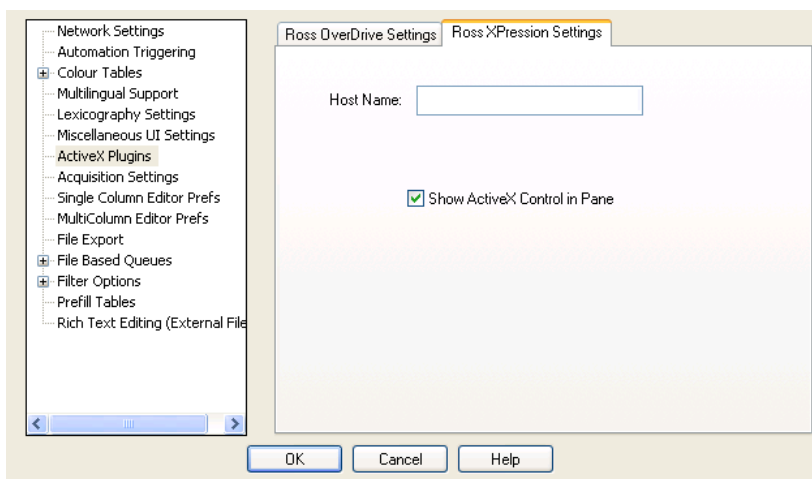
★ If **Ross XPression MOS** is not present in the **Tools** menu, the Autocue Newsroom software might not be licensed to support the XPression ActiveX plugin. Please contact Autocue for assistance.

4. Select **Tools > Options**.

The **System Options** window opens.

5. In the **System Options** window list, select **ActiveX Plugin**.

6. Select the **Ross XPression Settings** tab.



7. In the **Host Name** field, enter the MOS ID of the XPression Gateway.
8. Select the **Show ActiveX Control in Pane** checkbox.
9. Select **OK**.

The **System Options** window closes.

## Configuring the Q-Series MOS Export Server

★ Configuring the Autocue MOS Export server should be done with the assistance of Autocue.

The configuration of the Autocue MOS Export server can be done using the **Q-Series Services** application found in the Windows® Control Panel; however, it might also require configuration steps to be performed using the Windows Regedit tool. Failure to correctly configure the server may result in a corruption of your Autocue Q-Series platform, and therefore, should only be performed with the assistance of Autocue.

A copy of the registry settings is provided here for informational purposes only.

```
[HKEY_LOCAL_MACHINE\SOFTWARE\Autocue\WinCue Mos Export Server]
"Export Path"="C:\\MosExportData"
"Server Name"="MOSExport"
"NCS Port"=dword:0000292d
"NCS ID"="QA-QNEWS-SVR"
"NCS Address"="QA-QNEWS-SVR"
"Allow Status Updates"=dword:00000000
"Check Rundown Level Generic MOS Events"=dword:00000000
"Require Clip IDs"=dword:00000000
"Retry Resolve Clip ID Times"=dword:0000000a
"Retry Resolve Clip ID Sleep (Ms)"=dword:000001f4
"Ignore Old Placeholders"=dword:00000000
"Do Quantel QPlay Lock Checks"=dword:00000000
"Check Rundown Level VC Fields"=dword:00000000
"Check Rundown Level VC Fields Thread"=dword:00000000
"Check Rundown Level VC Fields Thread Sleep"=dword:00001388
"Check Story Level Events"=dword:00000001
"Check Story Level VC Events"=dword:00000000
"Check Story Level MOS Events"=dword:00000001
"New StoryID For roStoryReplace"=dword:00000000
"Send StoryItem In StoryBody"=dword:00000001
"Send Stories"=dword:00000001
"Startup Queue Export Check"=dword:00000000
"Client Count"=dword:00000001
"Obey Prompt Initiated Export"=dword:00000000
"Obey Start Continuous Export"=dword:00000001
"New Style Writes"=dword:00000001
"MOS Version ID"=dword:00000000
"SIAM Alerts"=dword:00000000
```

```
[HKEY_LOCAL_MACHINE\SOFTWARE\Autocue\WinCue Mos Export Server\Client 0]
"Client Name"="XPRESS"
"Description"=""
"MOS ID"="PV.CG.XPNQA2"
"MOS Port"=dword:0000292c
"MOS Address"="172.16.7.62"
"Timeout ms"=dword:00002710
"Use Story MOS"=dword:00000000
"Send Heartbeats"=dword:00000000
"Heartbeat Timeout"=dword:0000001e
"Dual Sockets"=dword:00000000
"Create Empty Runorders"=dword:00000000
"MOS Version ID"=dword:00000000
"New Style Writes"=dword:00000001
"Command Read Timeout ms"=dword:00000064
"Require MOS Msg Reply"=dword:00000001
```

```
[HKEY_LOCAL_MACHINE\SYSTEM\CurrentControlSet\Services\WCMOSSRV\Parameters\]
"Use Globally Unique Story IDs"=dword:00000001
```

## Operational Note

The **Add To Story** button in the XPression plugin does not directly add an item to a story in Q-Series.

Q-Series allows multiple stories to be open at the same time. As such, the plugin is unable to know to which story you are attempting to add the graphic. Therefore, the **Add To Story** button will place the graphic onto the Windows clipboard, which can then be pasted into any open story by clicking within the story and pressing **Ctrl+V**.

Alternatively, you can drag the graphic from the XPression plugin and drop it into any open story in Q-Series.